

**WELL NAME:** Calvert # 3-14  
**COMPANY:** Downing-Nelson Oil Co. Inc  
**LOCATION:** Sec. 14 Twp. 13S Rge. 20W  
Ellis County Kansas  
**DATE:** 1/09/97

TRILOBITE TESTING L.L.C.

OPERATOR : Downing-Nelson Oil Co  
 WELL NAME: Calvert #3-14  
 LOCATION : 14-13S-20W Ellis KS  
 INTERVAL : 3784.00 To 3864.00 ft

DATE 1/7/97

KB 0.00 ft TICKET NO: 9758 DST #1  
 GR 0.00 ft FORMATION: Conglomerate  
 TD 3876.00 ft TEST TYPE: CONV. / STRADDLE

RECORDER DATA

Mins	Field	1	2	3	4	TIME DATA-----
PF 30 Rec.	13754	13754	7437			PF Fr. 0945 to 10:1 hr
SI 30 Range(Psi )	4000.0	4000.0	4200.0	0.0	0.0	IS Fr. 10:1 to 10:4 hr
SF 15 Clock(hrs)	12hr	12hr	12hr			SF Fr. 10:4 to 11:0 hr
FS 0 Depth(ft )	3788.0	3788.0	3873.0	0.0	0.0	FS Fr. to hr

	Field	1	2	3	4	
A. Init Hydro	1966.0	1911.0	0.0	0.0	0.0	T STARTED 08:0 hr
B. First Flow	39.0	54.0	0.0	0.0	0.0	T ON BOTM 09:4 hr
B1. Final Flow	39.0	31.0	0.0	0.0	0.0	T OPEN 09:4 hr
C. In Shut-in	354.0	346.0	0.0	0.0	0.0	T PULLED 11:0 hr
D. Init Flow	39.0	47.0	0.0	0.0	0.0	T OUT 11:3 hr
E. Final Flow	39.0	37.0	0.0	0.0	0.0	
F. Fl Shut-in	0.0	0.0	0.0	0.0	0.0	TOOL DATA-----
G. Final Hydro	1916.0	1845.0	0.0	0.0	0.0	Tool Wt. 1000.00 lbs
Inside/Outside	0	0				Wt Set On Packer 30000.00 lbs
						Wt Pulled Loose 50000.00 lbs
						Initial Str Wt 45000.00 lbs
						Unseated Str Wt 45000.00 lbs
						Bot Choke 0.75 in
						Hole Size 7.88 in
						D Col. ID 2.25 in
						D. Pipe ID 3.80 in
						D.C. Length 30.00 ft
						D.P. Length 3765.00 ft

RECOVERY

Tot Fluid 20.00 ft of 20.00 ft in DC and 0.00 ft in DP  
 20.00 ft of Drilling Mud 100% mud  
 0.00 ft of  
 0.00 ft of  
 0.00 ft of  
 0.00 ft of  
 0.00 ft of  
 0.00 ft of  
 0.00 ft of

SALINITY 0.00 P.P.M. A.P.I. Gravity 0.00

BLOW DESCRIPTION

Initial Flow:  
 Weak blow, building to 1 inch

Initial Shut In:

Final Flow:  
 No blow, flushed tool, no help

Final Shut In:

SAMPLES:

SENT TO:

MUD DATA-----

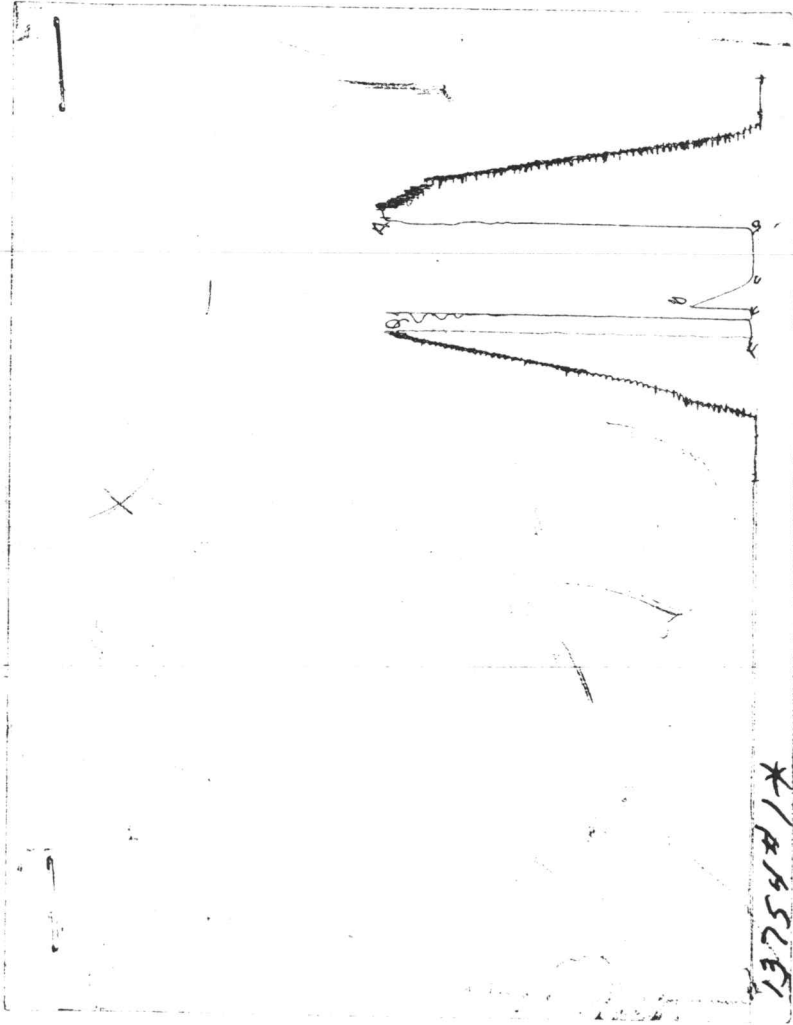
Mud Type Chemical  
 Weight 9.30 lb/c  
 Vis. 58.00 S/L  
 W.L. 9.10 in3  
 F.C. 0.00 in  
 Mud Drop

Amt. of fill 0.00 ft  
 Btm. H. Temp. 114.00 F  
 Hole Condition  
 % Porosity 0.00  
 Packer Size 6.75 in  
 No. of Packers 0  
 Cushion Amt. 3.00

Cushion Type  
 Reversed Out  
 Tool Chased  
 Tester Dan Bangle  
 Co. Rep. Ron Nelson  
 Contr. Discovery  
 Rig # 2  
 Unit #  
 Pump T.

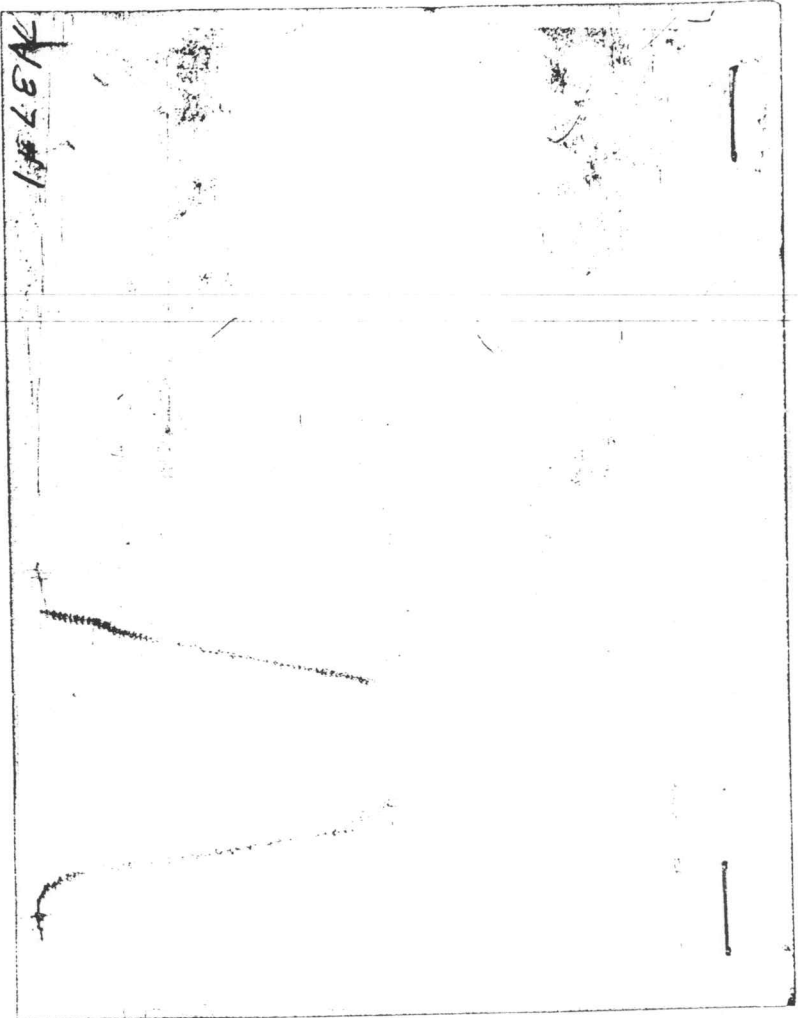
Test Successful: Y

CHART PAGE



This is a photocopy of the actual AK-1 recorder chart

CHART PAGE



This is a photocopy of the actual AK-1 recorder chart

TRILOBITE TESTING L.L.C.

OPERATOR : Downing-Nelson Oil Co  
 WELL NAME: Calvert # 3-14  
 LOCATION : 14-13S-20W Ellis KS  
 INTERVAL : 3660.00 To 3683.00 ft

DATE 1/7/97  
 KB 0.00 ft  
 GR 0.00 ft  
 TD 3876.00 ft

TICKET NO: 9759  
 FORMATION: Lansing KC "K"  
 TEST TYPE: CONV. / STRADDLE

DST #2

RECORDER DATA

Mins	Field	1	2	3	4	TIME DATA-----
PF 45 Rec.	13754	13754	7437			PF Fr. 14:1 to 14:5 hr
SI 45 Range(Psi )	4000.0	4000.0	4200.0	0.0	0.0	IS Fr. 14:5 to 15:4 hr
SF 30 Clock(hrs)	12hr	12hr	12hr			SF Fr. 15:4 to 16:1 hr
FS 30 Depth(ft )	3663.0	3663.0	3873.0	0.0	0.0	FS Fr. 16:1 to 16:4 hr

	Field	1	2	3	4	
A. Init Hydro	1886.0	1870.0	0.0	0.0	0.0	T STARTED 11:3 hr
B. First Flow	19.0	29.0	0.0	0.0	0.0	T ON BOTM 14:0 hr
B1. Final Flow	39.0	38.0	0.0	0.0	0.0	T OPEN 14:1 hr
C. In Shut-in	857.0	847.0	0.0	0.0	0.0	T PULLED 16:4 hr
D. Init Flow	59.0	67.0	0.0	0.0	0.0	T OUT 18:1 hr
E. Final Flow	68.0	60.0	0.0	0.0	0.0	
F. Fl Shut-in	818.0	811.0	0.0	0.0	0.0	
G. Final Hydro	1816.0	1764.0	0.0	0.0	0.0	
Inside/Outside	0	0				

TOOL DATA-----

Tool Wt. 1000.00 lbs  
 Wt Set On Packer 30000.00 lbs  
 Wt Pulled Loose 50000.00 lbs  
 Initial Str Wt 45000.00 lbs  
 Unseated Str Wt 46000.00 lbs  
 Bot Choke 0.75 in  
 Hole Size 7.88 in  
 D Col. ID 2.25 in  
 D. Pipe ID 3.80 in  
 D.C. Length 30.00 ft  
 D.P. Length 3825.00 ft

RECOVERY

Tot Fluid 135.00 ft of 30.00 ft in DC and 105.00 ft in DP  
 135.00 ft of Muddy Water  
 0.00 ft of  
 0.00 ft of  
 0.00 ft of  
 0.00 ft of  
 0.00 ft of  
 0.00 ft of  
 0.00 ft of  
 SALINITY 0.00 P.P.M. A.P.I. Gravity 0.00

MUD DATA-----

Mud Type Chemical  
 Weight 9.30 lb/c  
 Vis. 58.00 S/L  
 W.L. 9.10 in3  
 F.C. 0.00 in  
 Mud Drop

BLOW DESCRIPTION

Initial Flow:  
 Weak blow, building to 8 1/2"

Initial Shut In:

Final Flow:  
 Weak blow, building to 2 1/2"

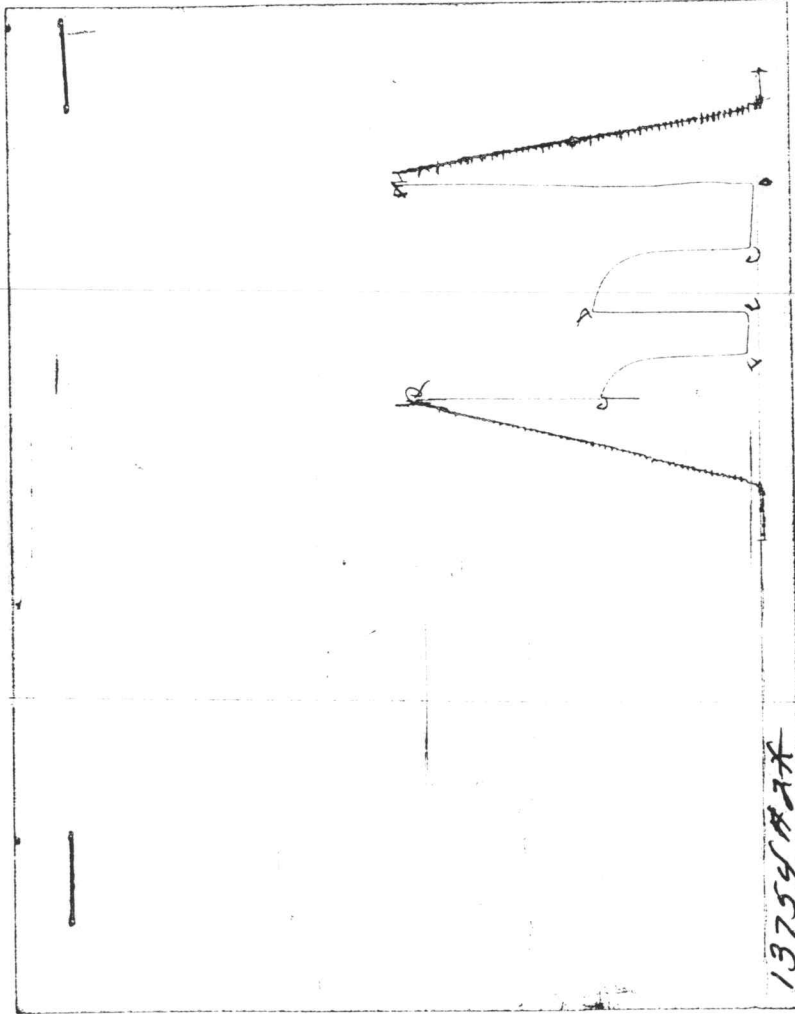
Final Shut In:

Amt. of fill 0.00 ft  
 Btm. H. Temp. 111.00 F  
 Hole Condition  
 % Porosity 0.00  
 Packer Size 6.75 in  
 No. of Packers 3  
 Cushion Amt. 0.00  
 Cushion Type  
 Reversed Out  
 Tool Chased  
 Tester Dan Bangle  
 Co. Rep. Ron Nelson  
 Contr. Discovery  
 Rig # 2  
 Unit #  
 Pump T.

SAMPLES:  
 SENT TO:

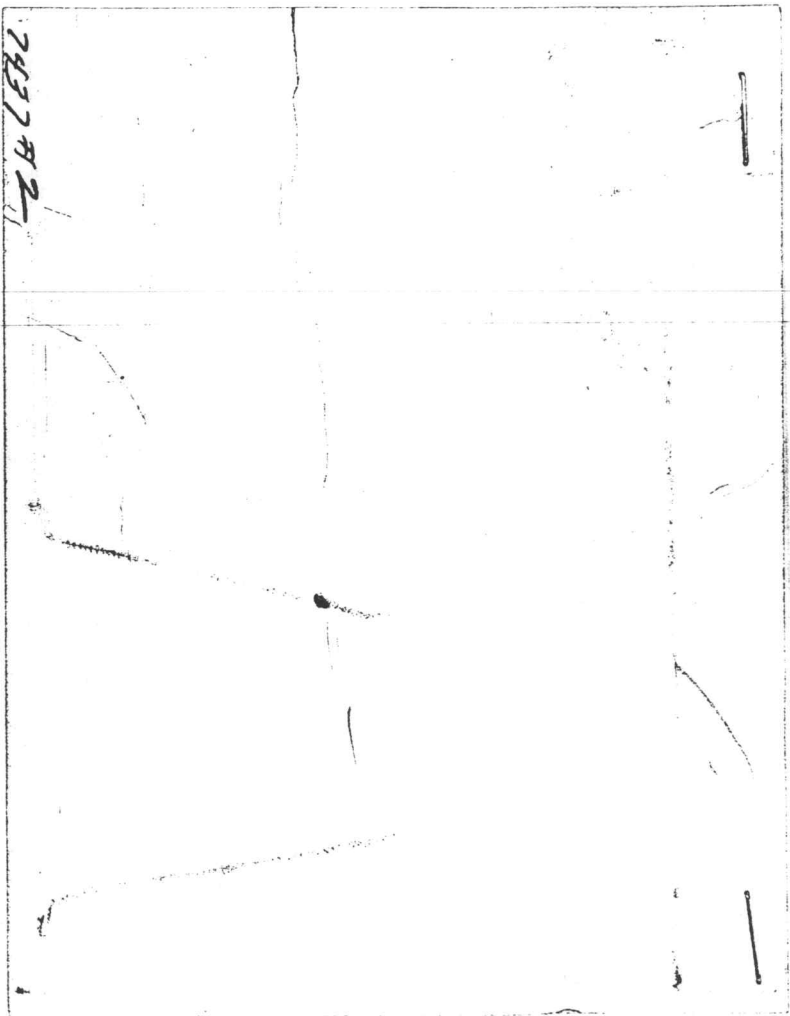
Test Successful: Y

CHART PAGE



This is a photocopy of the actual AK-1 recorder chart

CHART PAGE



This is a photocopy of the actual AK-1 recorder chart

TRILOBITE TESTING L.L.C.

OPERATOR : Downing-Nelson Oil Co  
 WELL NAME: Calvert #3-14  
 LOCATION : 14-13S-20W Ellis KS  
 INTERVAL : 3494.00 To 3528.00 ft

DATE 1/7/97  
 KB 0.00 ft  
 GR 0.00 ft  
 TD 3876.00 ft

TICKET NO: 9760  
 FORMATION: Lansing KC "C"  
 TEST TYPE: CONV. / STRADDLE

DST #3

RECORDER DATA

Mins	Field	1	2	3	4	TIME DATA-----
PF 30 Rec.	13754	13754	7437			PF Fr. 20:2 to 20:5 hr
SI 30 Range(Psi )	4000.0	4000.0	4200.0	0.0	0.0	IS Fr. 20:5 to 21:2 hr
SF 30 Clock(hrs)	12hr	12hr	12hr			SF Fr. 21:2 to 21:5 hr
FS 30 Depth(ft )	3499.0	3499.0	3873.0	0.0	0.0	FS Fr. 21:5 to 22:2 hr

	Field	1	2	3	4	
A. Init Hydro	1826.0	1824.0	0.0	0.0	0.0	T STARTED 18:5 hr
B. First Flow	78.0	78.0	0.0	0.0	0.0	T ON BOTM 20:2 hr
Bl. Final Flow	196.0	186.0	0.0	0.0	0.0	T OPEN 20:2 hr
C. In Shut-in	837.0	834.0	0.0	0.0	0.0	T PULLED 22:2 hr
D. Init Flow	216.0	215.0	0.0	0.0	0.0	T OUT 24:3 hr
E. Final Flow	265.0	269.0	0.0	0.0	0.0	
F. Fl Shut-in	837.0	840.0	0.0	0.0	0.0	
G. Final Hydro	1756.0	1763.0	0.0	0.0	0.0	TOOL DATA-----
Inside/Outside	0	0				Tool Wt. 1000.00 lbs
						Wt Set On Packer 30000.00 lbs
						Wt Pulled Loose 55000.00 lbs
						Initial Str Wt 45000.00 lbs
						Unseated Str Wt 48000.00 lbs
						Bot Choke 0.75 in
						Hole Size 7.88 in
						D Col. ID 2.25 in
						D. Pipe ID 3.80 in
						D.C. Length 0.00 ft
						D.P. Length 3818.00 ft

RECOVERY

Tot Fluid 603.00 ft of 30.00 ft in DC and 573.00 ft in DP  
 60373.00 ft of Oil Cut Gassy Mud  
 0.00 ft of  
 0.00 ft of  
 0.00 ft of  
 0.00 ft of  
 0.00 ft of  
 0.00 ft of  
 0.00 ft of  
 SALINITY 0.00 P.P.M. A.P.I. Gravity 0.00

BLOW DESCRIPTION

Initial Flow:  
 Strong blow, bottom of bucket in 4 min

Initial Shut In:

Final Flow:  
 Strong blow, bottom of bucket in 8 min

Final Shut In:

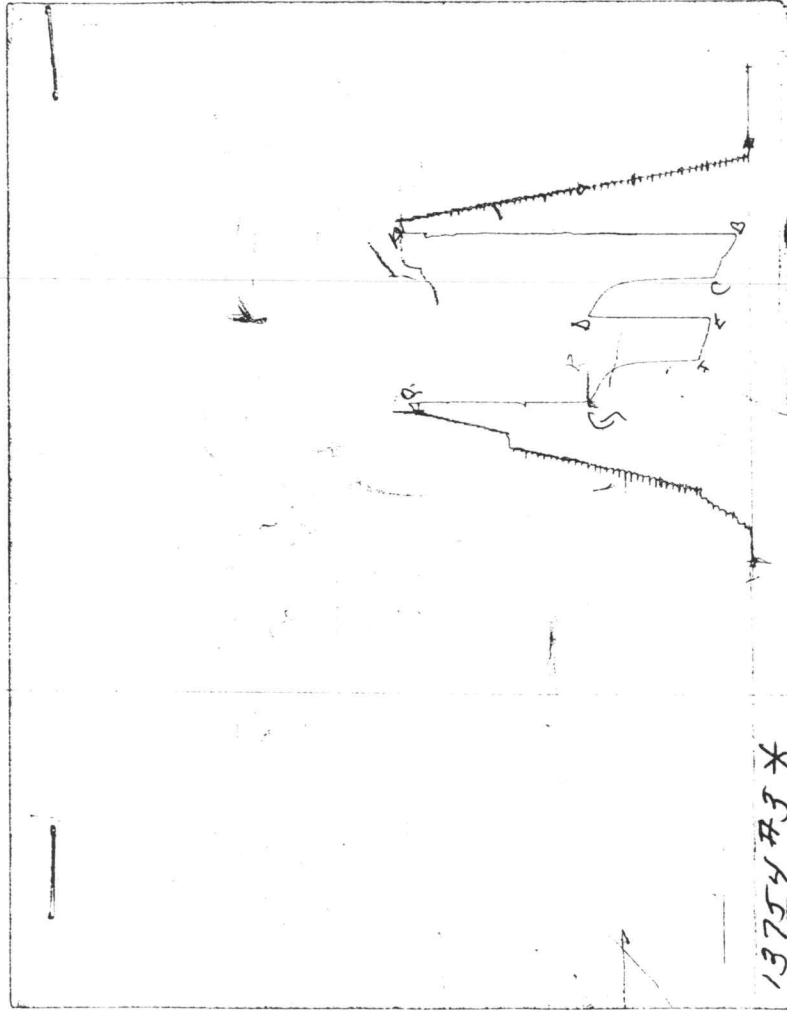
SAMPLES:  
 SENT TO:

MUD DATA-----

Mud Type	Chemical
Weight	9.30 lb/c
Vis.	58.00 S/L
W.L.	9.10 in3
F.C.	0.00 in
Mud Drop	
Amt. of fill	0.00 ft
Btm. H. Temp.	116.00 F
Hole Condition	
% Porosity	0.00
Packer Size	6.75 in
No. of Packers	3
Cushion Amt.	0.00
Cushion Type	
Reversed Out	
Tool Chased	
Tester	Dan Bangle
Co. Rep.	Ron Nelson
Contr.	Discovery
Rig #	2
Unit #	
Pump T.	

Test Successful: Y

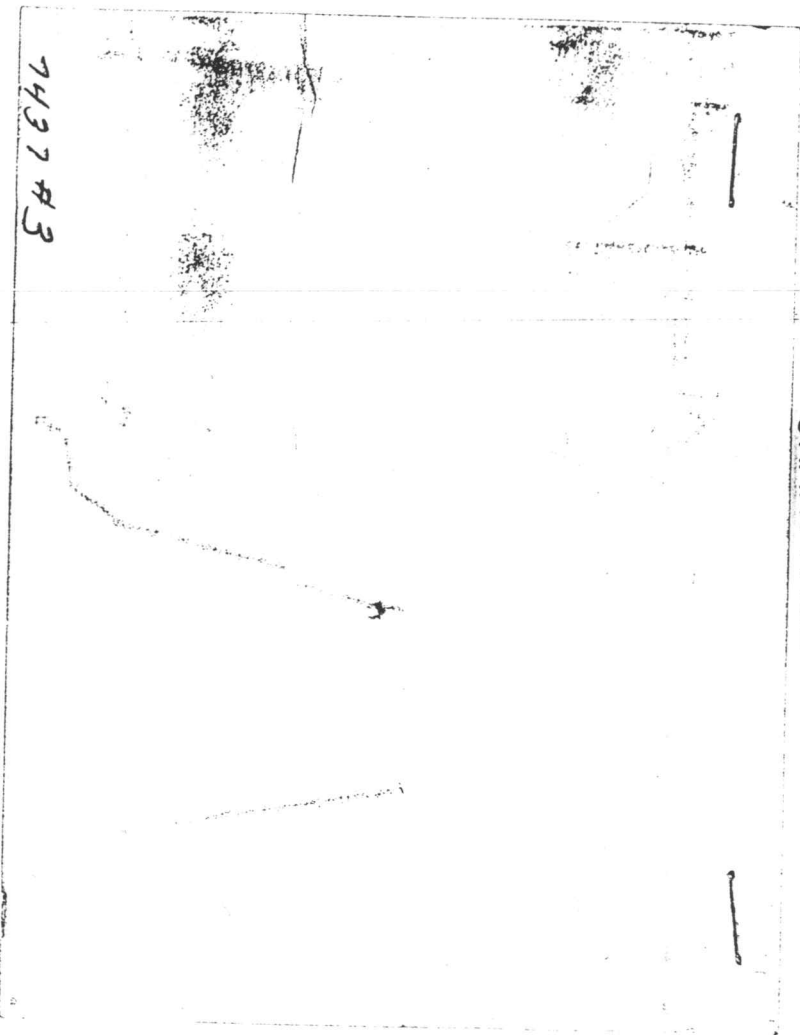
CHART PAGE



This is a photocopy of the actual AK-1 recorder chart

11

CHART PAGE



This is a photocopy of the actual AK-1 recorder chart