

DRILL STEM TEST REPORT

Prepared For: **Ritchie Exploration**

8100 East 22nd N #700
Wichita Kansas 67278

ATTN: Max Lovely

Mendenhall 7c #1

7-13s-28w-Gove

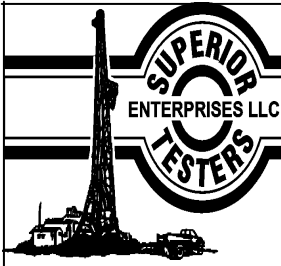
Start Date: 2014.03.31 @ 02:59:00

End Date: 2014.03.31 @ 09:29:00

Job Ticket #: 18306 DST #: 1

Superior Testers Enterprises LLC
PO Box 138 Great Bend KS 67530
1-800-792-6902

Printed: 2014.03.31 @ 10:45:23



DRILL STEM TEST REPORT

Ritchie Exploration

7-13s-28w-Gove

8100 East 22nd N #700
Wichita Kansas 67278

Mendenhall 7c #1

Job Ticket: 18306

DST#: 1

ATTN: Max Lovely

Test Start: 2014.03.31 @ 02:59:00

GENERAL INFORMATION:

Formation: **Lansing E-F**

Deviated: No Whipstock: ft (KB)

Time Tool Opened: 05:03:30

Time Test Ended: 09:29:00

Test Type: Conventional Bottom Hole (Initial)

Tester: Dustin Ellis

Unit No: 3315-Scott City-80

Interval: 3950.00 ft (KB) To 3987.00 ft (KB) (TVD)

Reference Elevations: 2716.00 ft (KB)

Total Depth: 3987.00 ft (KB) (TVD)

2712.00 ft (CF)

Hole Diameter: 7.88 inches Hole Condition: Fair

KB to GR/CF: 4.00 ft

Serial #: 6838

Press@RunDepth: 329.62 psig @ ft (KB)

Capacity: 5000.00 psig

Start Date: 2014.03.31

End Date:

2014.03.31

Last Calib.:

2014.03.31

Start Time: 02:59:00

End Time:

09:29:00

Time On Btm:

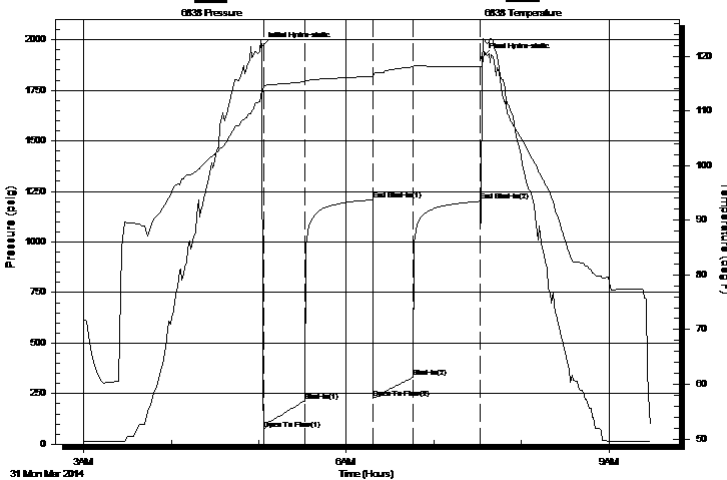
2014.03.31 @ 05:02:00

Time Off Btm:

2014.03.31 @ 07:33:00

TEST COMMENT: 1st Open 30 minutes Strong building blow built to the bottom of a 5 gallon bucket of water in 11 minutes .
1st Shut in 45 minutes No blow back.
2nd Open 30 minutes Strong building blow built to the bottom of a 5 gallon bucket of water in 12 minutes.
2nd Shut in 45 minutes No blow back

Pressure vs. Time



PRESSURE SUMMARY

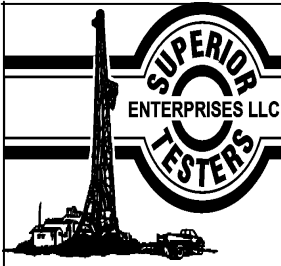
Time (Min.)	Pressure (psig)	Temp (deg F)	Annotation
0	1964.41	113.99	Initial Hydro-static
2	73.46	114.55	Open To Flow (1)
30	213.14	115.31	Shut-In(1)
76	1208.47	116.31	End Shut-In(1)
77	225.89	116.17	Open To Flow (2)
104	329.62	118.03	Shut-In(2)
150	1201.17	118.11	End Shut-In(2)
151	1910.64	118.28	Final Hydro-static

Recovery

Length (ft)	Description	Volume (bbl)
427.00	Water 100%	4.88
122.00	Mud 100%	1.71
0.00	Chlorides 39,000 .2 ohms@56degrees	0.00

Gas Rates

Choke (inches)	Pressure (psig)	Gas Rate (Mcf/d)



DRILL STEM TEST REPORT

Ritchie Exploration
 8100 East 22nd N #700
 Wichita Kansas 67278
 ATTN: Max Lovely

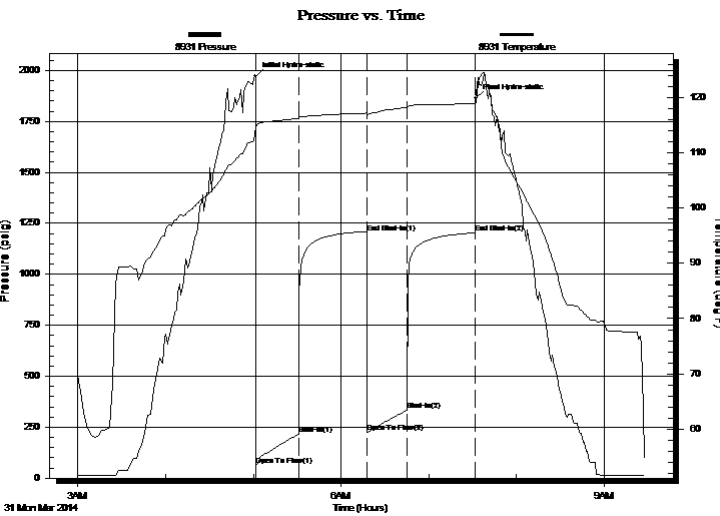
7-13s-28w-Gove
Mendenhall 7c #1
 Job Ticket: 18306 **DST#: 1**
 Test Start: 2014.03.31 @ 02:59:00

GENERAL INFORMATION:

Formation: **Lansing E-F**
 Deviated: No Whipstock: ft (KB)
 Time Tool Opened: 05:03:30
 Time Test Ended: 09:29:00
 Interval: **3950.00 ft (KB) To 3987.00 ft (KB) (TVD)**
 Total Depth: 3987.00 ft (KB) (TVD)
 Hole Diameter: 7.88 inches Hole Condition: Fair
 Test Type: Conventional Bottom Hole (Initial)
 Tester: Dustin Ellis
 Unit No: 3315-Scott City-80
 Reference Elevations: 2716.00 ft (KB)
 2712.00 ft (CF)
 KB to GR/CF: 4.00 ft

Serial #: 8931 Outside
 Press@RunDepth: 1203.63 psig @ 3982.00 ft (KB) Capacity: 5000.00 psig
 Start Date: 2014.03.31 End Date: 2014.03.31 Last Calib.: 2014.03.31
 Start Time: 02:59:00 End Time: 09:28:00 Time On Btm: 2014.03.31 @ 05:01:30
 Time Off Btm: 2014.03.31 @ 07:32:00

TEST COMMENT: 1st Open 30 minutes Strong building blow built to the bottom of a 5 gallon bucket of water in 11 minutes .
 1st Shut in 45 minutes No blow back.
 2nd Open 30 minutes Strong building blow built to the bottom of a 5 gallon bucket of water in 12 minutes.
 2nd Shut in 45 minutes No blow back



PRESSURE SUMMARY

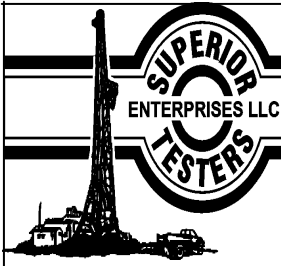
Time (Min.)	Pressure (psig)	Temp (deg F)	Annotation
0	1971.28	114.66	Initial Hydro-static
1	62.72	114.27	Open To Flow (1)
30	217.35	116.16	Shut-In(1)
76	1200.88	117.14	End Shut-In(1)
77	224.27	116.89	Open To Flow (2)
104	332.12	118.17	Shut-In(2)
150	1203.63	118.80	End Shut-In(2)
151	1864.11	119.16	Final Hydro-static

Recovery

Length (ft)	Description	Volume (bbl)
427.00	Water 100%	4.88
122.00	Mud 100%	1.71
0.00	Chlorides 39,000 .2 ohms@56degrees	0.00

Gas Rates

	Choke (inches)	Pressure (psig)	Gas Rate (Mcf/d)



DRILL STEM TEST REPORT

TOOL DIAGRAM

Ritchie Exploration

7-13s-28w-Gove

8100 East 22nd N #700
Wichita Kansas 67278

Mendenhall 7c #1

Job Ticket: 18306

DST#: 1

ATTN: Max Lovely

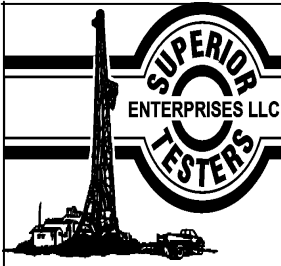
Test Start: 2014.03.31 @ 02:59:00

Tool Information

Drill Pipe:	Length: 3808.00 ft	Diameter: 3.80 inches	Volume: 53.42 bbl	Tool Weight: 2000.00 lb
Heavy Wt. Pipe:	Length: 0.00 ft	Diameter: 0.00 inches	Volume: 0.00 bbl	Weight set on Packer: 20000.00 lb
Drill Collar:	Length: 122.14 ft	Diameter: 2.25 inches	Volume: 0.60 bbl	Weight to Pull Loose: 83000.00 lb
			<u>Total Volume: 54.02 bbl</u>	Tool Chased 0.00 ft
Drill Pipe Above KB:	8.14 ft			String Weight: Initial 58000.00 lb
Depth to Top Packer:	3950.00 ft			Final 59000.00 lb
Depth to Bottom Packer:	ft			
Interval between Packers:	37.00 ft			
Tool Length:	65.00 ft			
Number of Packers:	2	Diameter: 6.75 inches		

Tool Comments:

Tool Description	Length (ft)	Serial No.	Position	Depth (ft)	Accum. Lengths
Shut In Tool	5.00			3927.00	
Hydraulic tool	5.00			3932.00	
Jars	6.00			3938.00	
Safety Joint	2.00			3940.00	
Top Packer	5.00			3945.00	
Packer	5.00			3950.00	28.00 Bottom Of Top Packer
Perforations	32.00			3982.00	
Recorder	0.00	3983	Inside	3982.00	
Recorder	0.00	8931	Outside	3982.00	
Bull Plug	5.00			3987.00	37.00 Anchor Tool
Total Tool Length:	65.00				



DRILL STEM TEST REPORT

FLUID SUMMARY

Ritchie Exploration

7-13s-28w-Gove

8100 East 22nd N #700
Wichita Kansas 67278

Mendenhall 7c #1

Job Ticket: 18306

DST#: 1

ATTN: Max Lovely

Test Start: 2014.03.31 @ 02:59:00

Mud and Cushion Information

Mud Type: Gel Chem

Cushion Type:

Oil API:

deg API

Mud Weight: 9.00 lb/gal

Cushion Length:

ft

Water Salinity:

ppm

Viscosity: 55.00 sec/qt

Cushion Volume:

bbbl

Water Loss: 7.20 in³

Gas Cushion Type:

Resistivity: ohm.m

Gas Cushion Pressure:

psig

Salinity: 1400.00 ppm

Filter Cake: 1.00 inches

Recovery Information

Recovery Table

Length ft	Description	Volume bbl
427.00	Water 100%	4.877
122.00	Mud 100%	1.711
0.00	Chlorides 39,000 .2 ohms@56degrees	0.000

Total Length: 549.00 ft

Total Volume: 6.588 bbl

Num Fluid Samples: 0

Num Gas Bombs: 0

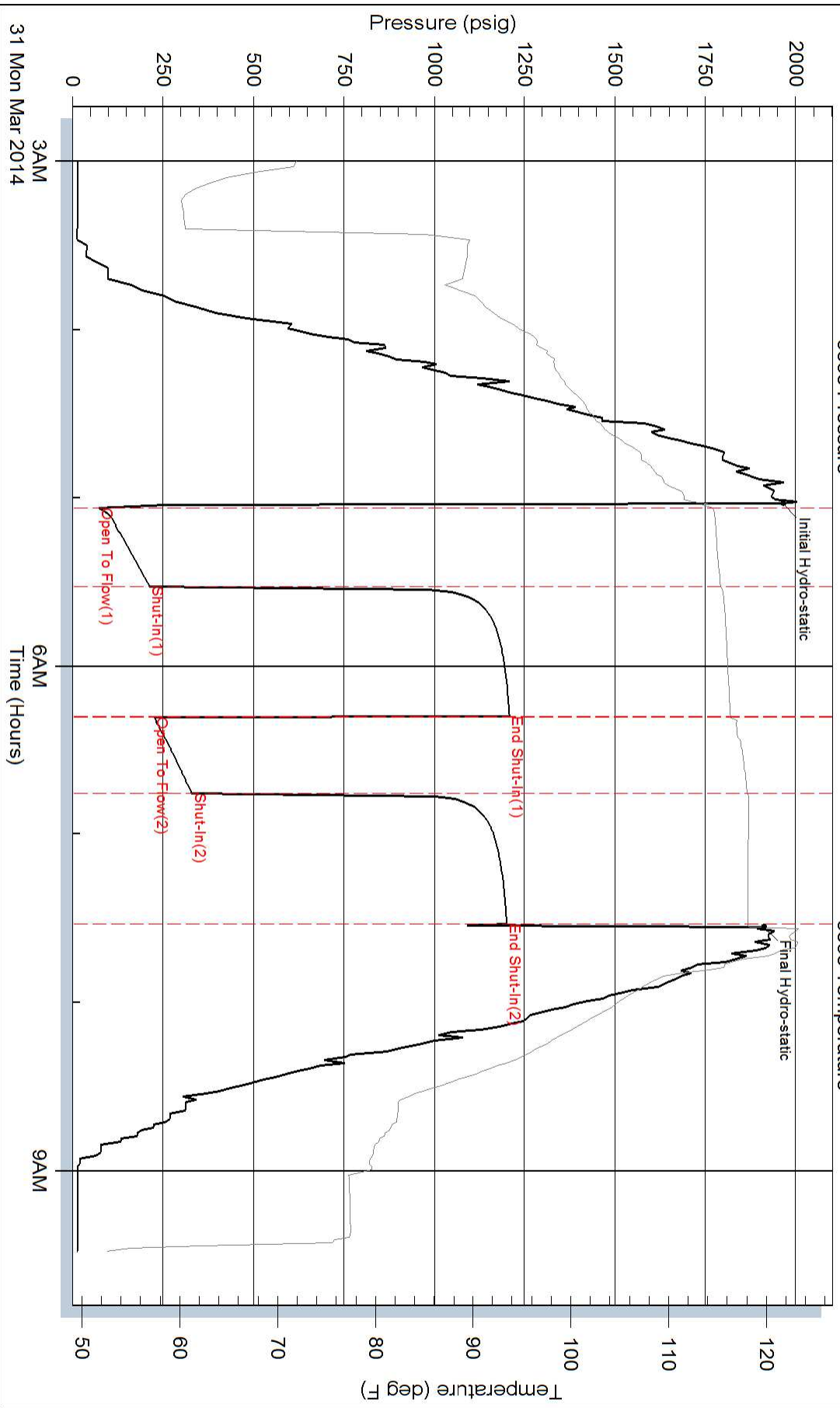
Serial #:

Laboratory Name:

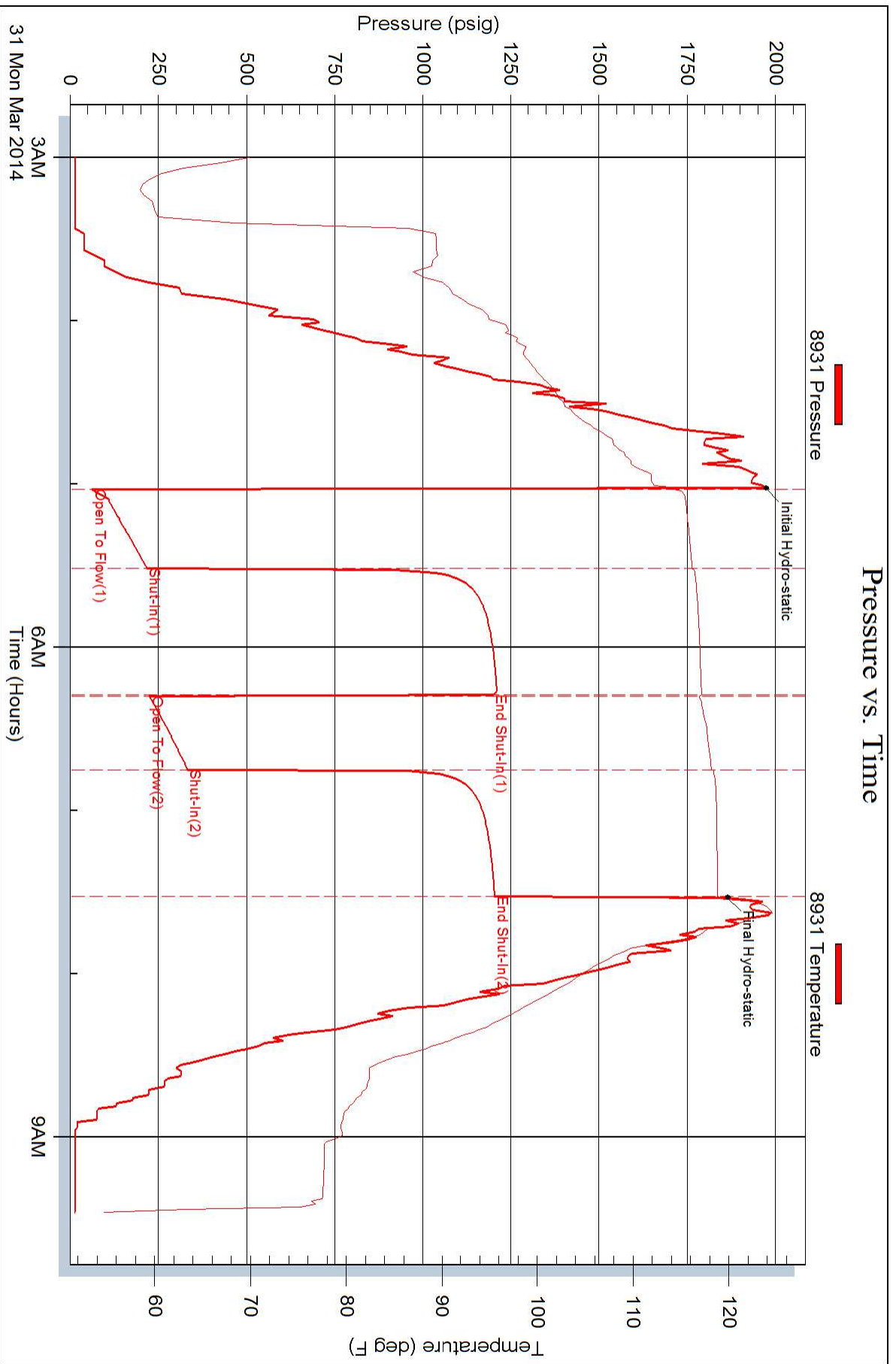
Laboratory Location:

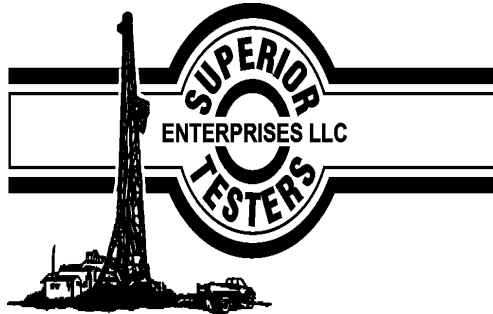
Recovery Comments:

Pressure vs. Time



Pressure vs. Time





DRILL STEM TEST REPORT

Prepared For: **Ritchie Exploration**

8100 East 22nd N #700
Wichita Kansas 67278

ATTN: Max Lovely

Mendenhall 7c #1

7-13s-28w-Gove

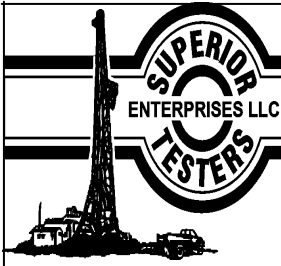
Start Date: 2014.03.31 @ 11:02:00

End Date: 2014.03.31 @ 17:01:00

Job Ticket #: 18307 DST #: 2

Superior Testers Enterprises LLC
PO Box 138 Great Bend KS 67530
1-800-792-6902

Printed: 2014.04.01 @ 06:17:47



DRILL STEM TEST REPORT

TOOL DIAGRAM

Ritchie Exploration

7-13s-28w-Gove

8100 East 22nd N #700
Wichita Kansas 67278

Mendenhall 7c #1

Job Ticket: 18307

DST#: 2

ATTN: Max Lovely

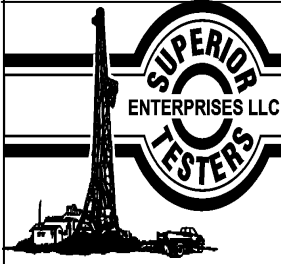
Test Start: 2014.03.31 @ 11:02:00

Tool Information

Drill Pipe:	Length: 3869.00 ft	Diameter: 3.80 inches	Volume: 54.27 bbl	Tool Weight:	2000.00 lb
Heavy Wt. Pipe:	Length: 0.00 ft	Diameter: 0.00 inches	Volume: 0.00 bbl	Weight set on Packer:	20000.00 lb
Drill Collar:	Length: 122.14 ft	Diameter: 2.25 inches	Volume: 0.60 bbl	Weight to Pull Loose:	62000.00 lb
			<u>Total Volume: 54.87 bbl</u>	Tool Chased	ft
Drill Pipe Above KB:	5.14 ft			String Weight: Initial	58000.00 lb
Depth to Top Packer:	4014.00 ft			Final	58000.00 lb
Depth to Bottom Packer:	ft				
Interval between Packers:	64.98 ft				
Tool Length:	92.98 ft				
Number of Packers:	2	Diameter:	6.75 inches		
Tool Comments:					

Tool Description	Length (ft)	Serial No.	Position	Depth (ft)	Accum. Lengths
Shut In Tool	5.00			3991.00	
Hydraulic tool	5.00			3996.00	
Jars	6.00			4002.00	
Safety Joint	2.00			4004.00	
Top Packer	5.00			4009.00	
Packer	5.00			4014.00	28.00 Bottom Of Top Packer
Anchor	7.00			4021.00	
Change Over Sub	0.00			4021.00	
Drill Pipe	31.98			4052.98	
Change Over Sub	0.00			4052.98	
Anchor	21.00			4073.98	
Recorder	0.00	6838	Inside	4073.98	
Recorder	0.00	8931	Outside	4073.98	
Bull Plug	5.00			4078.98	64.98 Anchor Tool

Total Tool Length: 92.98



DRILL STEM TEST REPORT

FLUID SUMMARY

Ritchie Exploration

7-13s-28w-Gove

8100 East 22nd N #700
Wichita Kansas 67278

Mendenhall 7c #1

Job Ticket: 18307

DST#: 2

ATTN: Max Lovely

Test Start: 2014.03.31 @ 11:02:00

Mud and Cushion Information

Mud Type: Gel Chem

Cushion Type:

Oil API:

deg API

Mud Weight: 9.00 lb/gal

Cushion Length:

ft

Water Salinity:

ppm

Viscosity: 53.00 sec/qt

Cushion Volume:

bbf

Water Loss: 8.80 in³

Gas Cushion Type:

Resistivity: ohm.m

Gas Cushion Pressure:

psig

Salinity: 2200.00 ppm

Filter Cake: 1.00 inches

Recovery Information

Recovery Table

Length ft	Description	Volume bbf
7.00	Mud 100%	0.034

Total Length: 7.00 ft Total Volume: 0.034 bbf

Num Fluid Samples: 0

Num Gas Bombs: 0

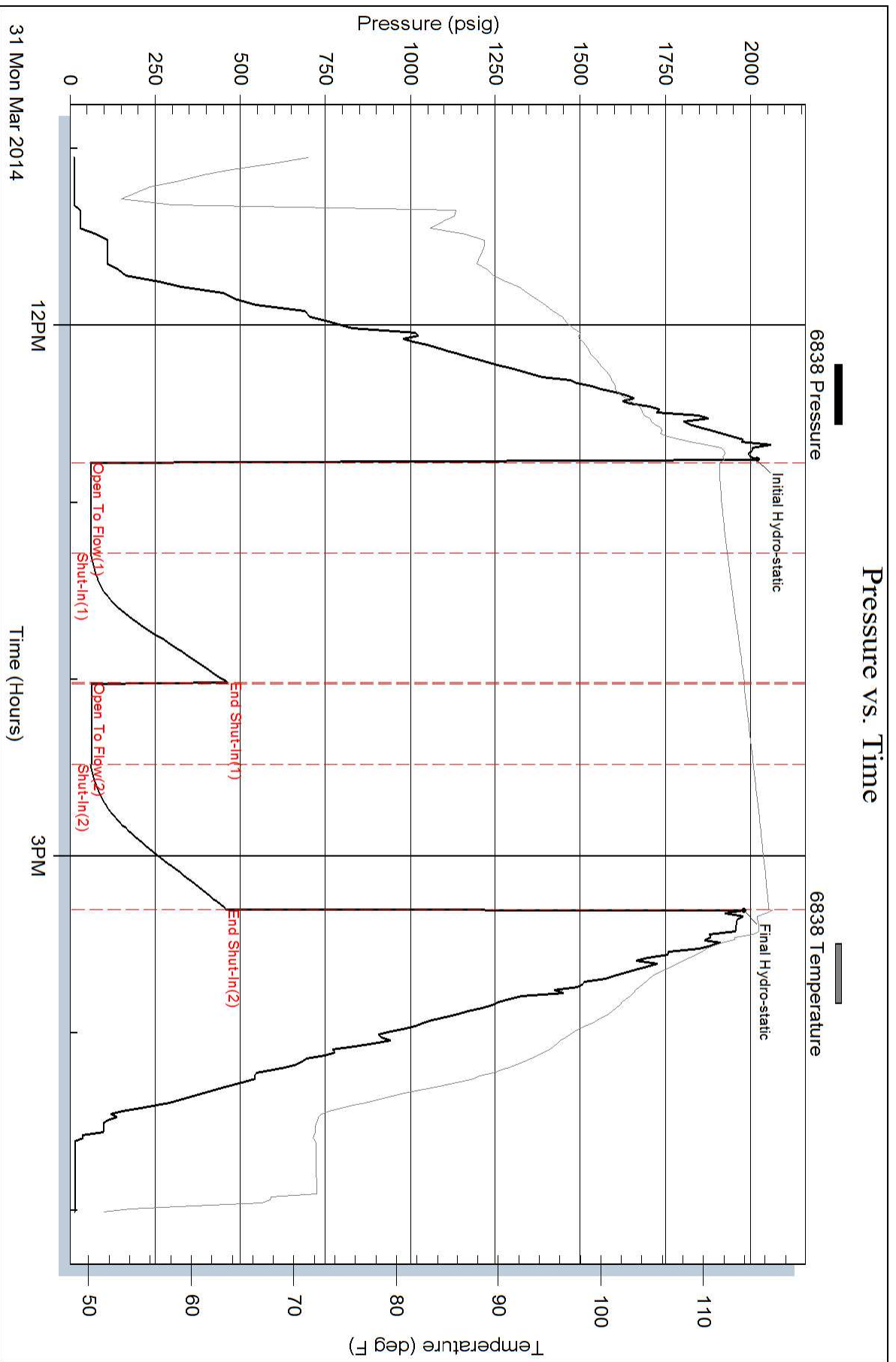
Serial #:

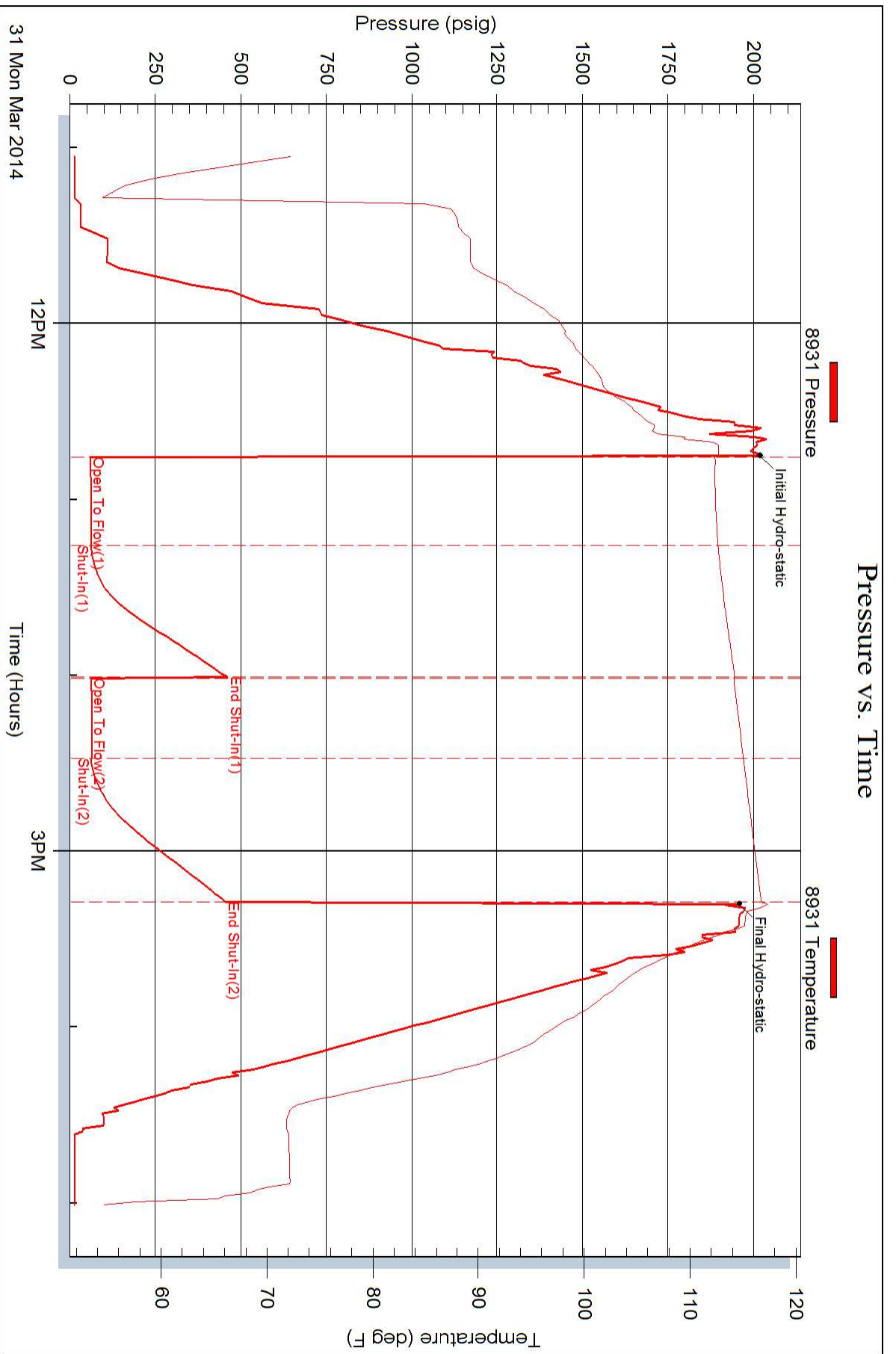
Laboratory Name:

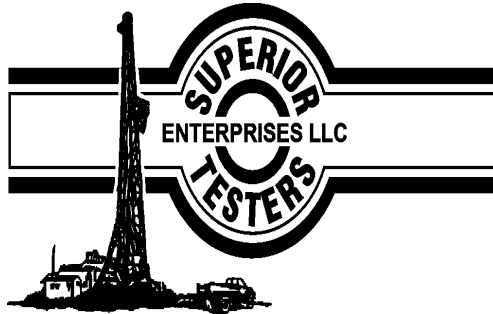
Laboratory Location:

Recovery Comments:

Pressure vs. Time







DRILL STEM TEST REPORT

Prepared For: **Ritchie Exploration**

8100 East 22nd N #700
Wichita Kansas 67278

ATTN: Max Lovely

Mendenhall 7c #1

7-13s-28w-Gove

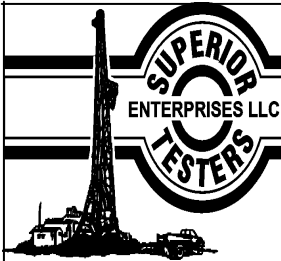
Start Date: 2014.04.01 @ 01:05:00

End Date: 2014.04.01 @ 06:24:00

Job Ticket #: 18308 DST #: 3

Superior Testers Enterprises LLC
PO Box 138 Great Bend KS 67530
1-800-792-6902

Printed: 2014.04.01 @ 19:36:08



DRILL STEM TEST REPORT

Ritchie Exploration

7-13s-28w-Gove

8100 East 22nd N #700
Wichita Kansas 67278

Mendenhall 7c #1

Job Ticket: 18308

DST#: 3

ATTN: Max Lovely

Test Start: 2014.04.01 @ 01:05:00

GENERAL INFORMATION:

Formation: **Lansing J**

Deviated: No Whipstock: ft (KB)

Time Tool Opened: 02:36:30

Time Test Ended: 06:24:00

Test Type: Conventional Bottom Hole (Initial)

Tester: Dustin Ellis

Unit No: 3315-Scott City-80

Interval: **4076.00 ft (KB) To 4104.00 ft (KB) (TVD)**

Reference Elevations: 2716.00 ft (KB)

Total Depth: 4104.00 ft (KB) (TVD)

2712.00 ft (CF)

Hole Diameter: 7.88 inches Hole Condition: Fair

KB to GR/CF: 4.00 ft

Serial #: **6838** Inside

Press@RunDepth: 51.37 psig @ 4099.00 ft (KB)

Capacity: 5000.00 psig

Start Date: 2014.04.01

End Date:

2014.04.01

Last Calib.:

2014.04.01

Start Time: 01:05:00

End Time:

06:24:00

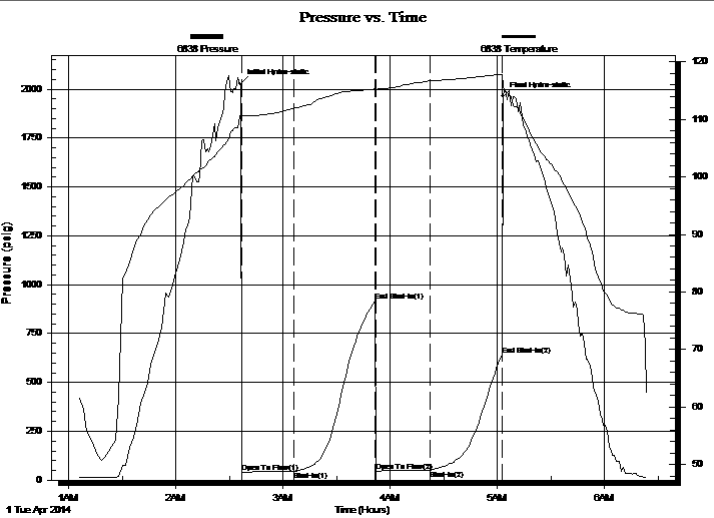
Time On Btm:

2014.04.01 @ 02:36:00

Time Off Btm:

2014.04.01 @ 05:03:00

TEST COMMENT: 1st Open 30 minutes Weak blow built to 1 inch into a 5 gallon bucket of water.
1st Shut in 45 minutes No blow back.
2nd Open 30 minutes Dead flushed tool after 7 minutes very weak surface blow died off.
2nd Shut in 45 minutes No blow back.



PRESSURE SUMMARY

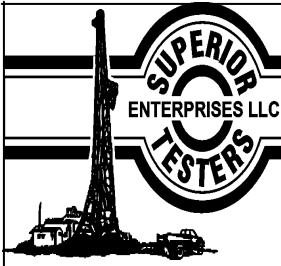
Time (Min.)	Pressure (psig)	Temp (deg F)	Annotation
0	2027.20	110.75	Initial Hydro-static
1	40.97	110.59	Open To Flow (1)
30	44.50	111.92	Shut-In(1)
76	916.89	115.28	End Shut-In(1)
76	46.80	115.08	Open To Flow (2)
106	51.37	116.69	Shut-In(2)
147	639.28	117.81	End Shut-In(2)
147	1962.53	116.01	Final Hydro-static

Recovery

Length (ft)	Description	Volume (bbl)
10.00	Oil spotted mud 100% Mud	0.05

Gas Rates

Choke (inches)	Pressure (psig)	Gas Rate (Mcf/d)



DRILL STEM TEST REPORT

TOOL DIAGRAM

Ritchie Exploration

7-13s-28w-Gove

8100 East 22nd N #700
Wichita Kansas 67278

Mendenhall 7c #1

Job Ticket: 18308

DST#: 3

ATTN: Max Lovely

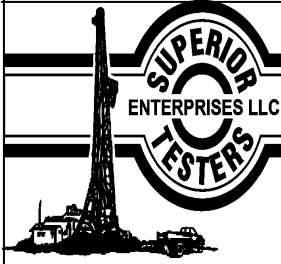
Test Start: 2014.04.01 @ 01:05:00

Tool Information

Drill Pipe:	Length: 3930.00 ft	Diameter: 3.80 inches	Volume: 55.13 bbl	Tool Weight: 2000.00 lb
Heavy Wt. Pipe:	Length: 0.00 ft	Diameter: 0.00 inches	Volume: 0.00 bbl	Weight set on Packer: 20000.00 lb
Drill Collar:	Length: 122.14 ft	Diameter: 2.25 inches	Volume: 0.60 bbl	Weight to Pull Loose: 63000.00 lb
			Total Volume: 55.73 bbl	Tool Chased 0.00 ft
Drill Pipe Above KB:	4.14 ft			String Weight: Initial 58000.00 lb
Depth to Top Packer:	4076.00 ft			Final 58000.00 lb
Depth to Bottom Packer:	ft			
Interval between Packers:	28.00 ft			
Tool Length:	56.00 ft			
Number of Packers:	2	Diameter: 6.75 inches		

Tool Comments:

Tool Description	Length (ft)	Serial No.	Position	Depth (ft)	Accum. Lengths
Shut In Tool	5.00			4053.00	
Hydraulic tool	5.00			4058.00	
Jars	6.00			4064.00	
Safety Joint	2.00			4066.00	
Top Packer	5.00			4071.00	
Packer	5.00			4076.00	28.00 Bottom Of Top Packer
Perforations	23.00			4099.00	
Recorder	0.00	6838	Inside	4099.00	
Recorder	0.00	8931	Outside	4099.00	
Bull Plug	5.00			4104.00	28.00 Anchor Tool
Total Tool Length:	56.00				



DRILL STEM TEST REPORT

FLUID SUMMARY

Ritchie Exploration

7-13s-28w-Gove

8100 East 22nd N #700
Wichita Kansas 67278

Mendenhall 7c #1

Job Ticket: 18308

DST#: 3

ATTN: Max Lovely

Test Start: 2014.04.01 @ 01:05:00

Mud and Cushion Information

Mud Type: Gel Chem

Mud Weight: 9.00 lb/gal

Viscosity: 57.00 sec/qt

Water Loss: 7.00 in³

Resistivity: ohm.m

Salinity: 2200.00 ppm

Filter Cake: 1.00 inches

Cushion Type:

Cushion Length: ft

Cushion Volume: bbl

Gas Cushion Type:

Gas Cushion Pressure: psig

Oil API:

Water Salinity: ppm

deg API

Recovery Information

Recovery Table

Length ft	Description	Volume bbl
10.00	Oil spotted mud 100% Mud	0.049

Total Length: 10.00 ft Total Volume: 0.049 bbl

Num Fluid Samples: 0

Num Gas Bombs: 0

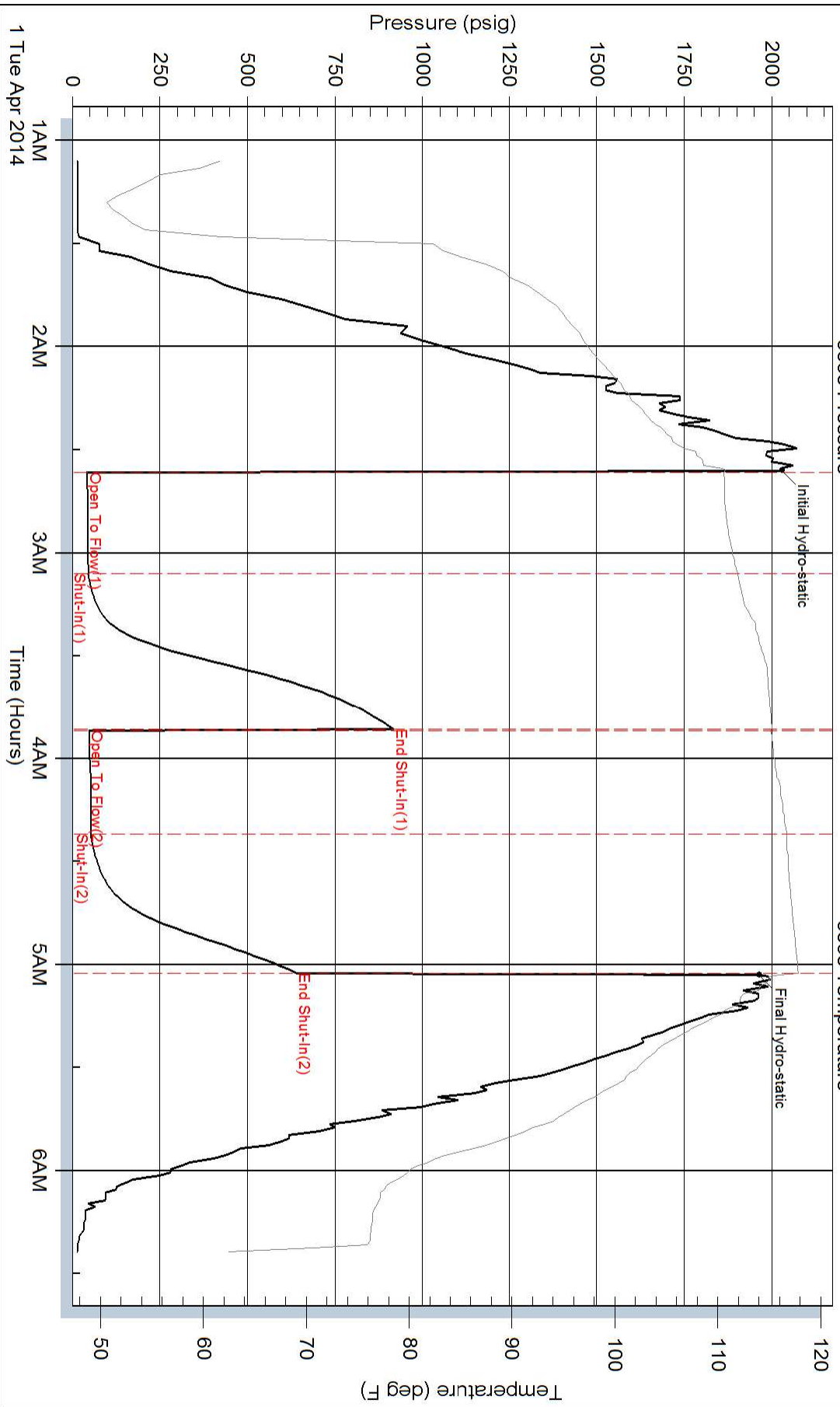
Serial #:

Laboratory Name:

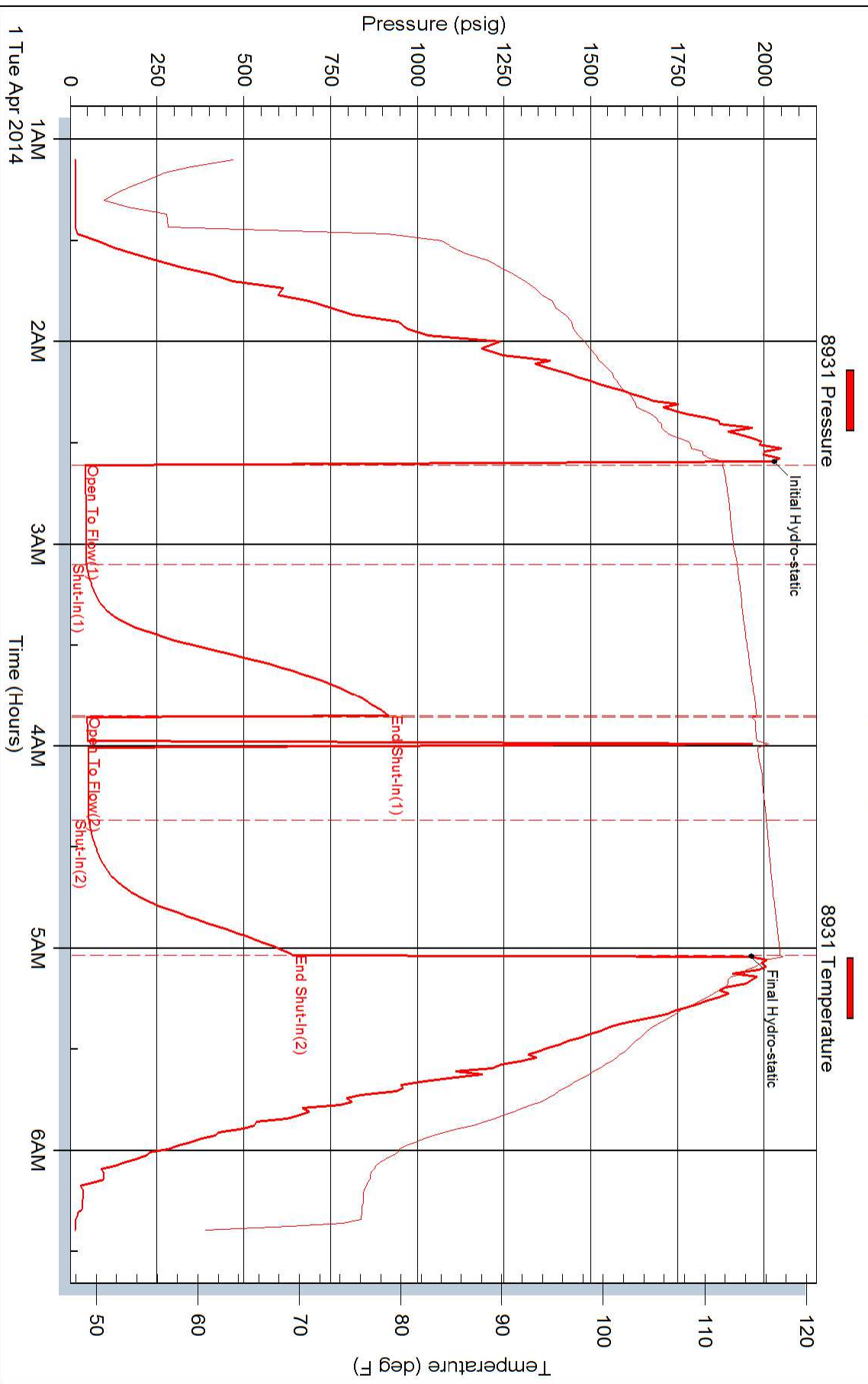
Laboratory Location:

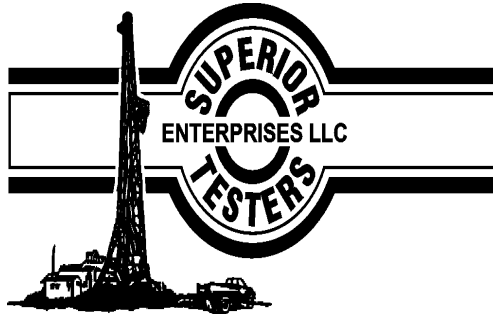
Recovery Comments:

Pressure vs. Time



Pressure vs. Time





DRILL STEM TEST REPORT

Prepared For: **Ritchie Exploration**

8100 East 22nd N #700
Wichita Kansas 67278

ATTN: Max Lovely

Mendenhall 7c #1

7-13s-28w-Gove

Start Date: 2014.04.02 @ 04:48:00

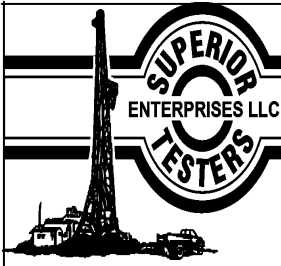
End Date: 2014.04.02 @ 10:39:00

Job Ticket #: 18309 DST #: 4

Superior Testers Enterprises LLC
PO Box 138 Great Bend KS 67530
1-800-792-6902

Printed: 2014.04.02 @ 11:58:30

Ritchie Exploration
7-13s-28w-Gove
Mendenhall 7c #1
DST # 4
Lansing K-L
2014.04.02



DRILL STEM TEST REPORT

Ritchie Exploration
 8100 East 22nd N #700
 Wichita Kansas 67278
 ATTN: Max Lovely

7-13s-28w-Gove
Mendenhall 7c #1
 Job Ticket: 18309 **DST#: 4**
 Test Start: 2014.04.02 @ 04:48:00

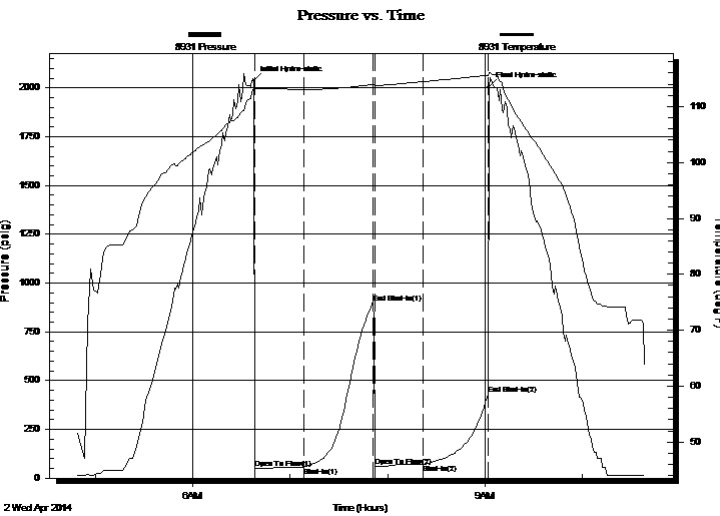
GENERAL INFORMATION:

Formation: **Lansing K-L**
 Deviated: No Whipstock: ft (KB)
 Time Tool Opened: 06:38:00
 Time Test Ended: 10:39:00
 Interval: **4098.00 ft (KB) To 4142.00 ft (KB) (TVD)**
 Total Depth: 4142.00 ft (KB) (TVD)
 Hole Diameter: 7.88 inches Hole Condition: Fair
 Test Type: Conventional Bottom Hole (Initial)
 Tester: Dustin Ellis
 Unit No: 3315-Scott City-80
 Reference Elevations: 2716.00 ft (KB)
 2712.00 ft (CF)
 KB to GR/CF: 4.00 ft

Serial #: 8931

Press@RunDepth: 70.37 psig @ ft (KB) Capacity: 5000.00 psig
 Start Date: 2014.04.02 End Date: 2014.04.02 Last Calib.: 2014.04.02
 Start Time: 04:48:00 End Time: 10:39:00 Time On Btm: 2014.04.02 @ 06:37:30
 Time Off Btm: 2014.04.02 @ 09:02:30

TEST COMMENT: 1st Open 30 minutes Weak building blow built to 1 1/4 inches into a 5 gallon bucket of water.
 1st Shut in 45 minutes No blow back.
 2nd Open 30 minutes Dead -flushed tool no help.
 2nd Shut in 45 minutes No blow back



PRESSURE SUMMARY

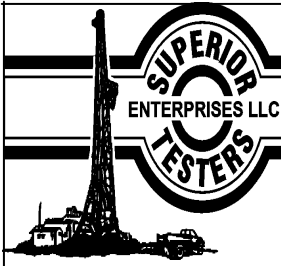
Time (Min.)	Pressure (psig)	Temp (deg F)	Annotation
0	2039.00	113.45	Initial Hydro-static
1	48.79	113.12	Open To Flow (1)
31	56.87	113.04	Shut-In(1)
74	900.34	113.92	End Shut-In(1)
75	60.50	113.74	Open To Flow (2)
105	70.37	114.45	Shut-In(2)
145	428.27	115.63	End Shut-In(2)
145	2004.99	116.11	Final Hydro-static

Recovery

Length (ft)	Description	Volume (bbl)
8.00	Very lightly oil spotted mud 100%	0.04

Gas Rates

Choke (inches)	Pressure (psig)	Gas Rate (Mcf/d)



DRILL STEM TEST REPORT

Ritchie Exploration
 8100 East 22nd N #700
 Wichita Kansas 67278
 ATTN: Max Lovely

7-13s-28w-Gove
Mendenhall 7c #1
 Job Ticket: 18309 **DST#: 4**
 Test Start: 2014.04.02 @ 04:48:00

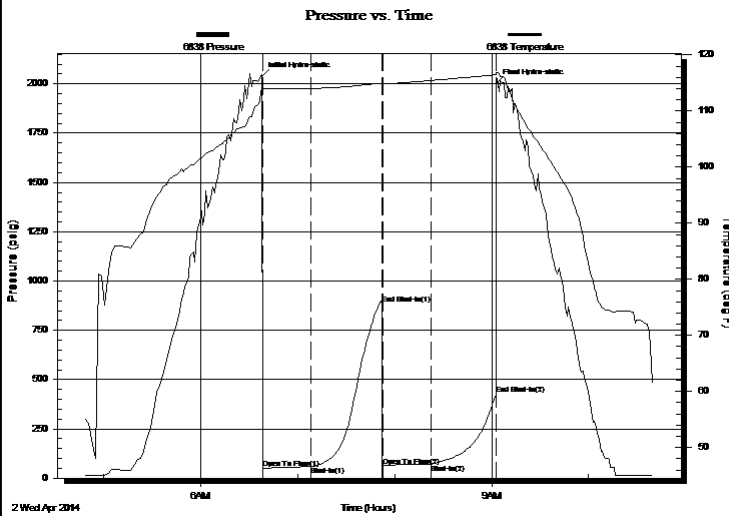
GENERAL INFORMATION:

Formation: **Lansing K-L**
 Deviated: No Whipstock: ft (KB)
 Time Tool Opened: 06:38:00
 Time Test Ended: 10:39:00
 Interval: **4098.00 ft (KB) To 4142.00 ft (KB) (TVD)**
 Total Depth: 4142.00 ft (KB) (TVD)
 Hole Diameter: 7.88 inches Hole Condition: Fair
 Test Type: Conventional Bottom Hole (Initial)
 Tester: Dustin Ellis
 Unit No: 3315-Scott City-80
 Reference Elevations: 2716.00 ft (KB)
 2712.00 ft (CF)
 KB to GR/CF: 4.00 ft

Serial #: 6838

Press@RunDepth: 426.85 psig @ ft (KB) Capacity: 5000.00 psig
 Start Date: 2014.04.02 End Date: 2014.04.02 Last Calib.: 2014.04.02
 Start Time: 04:48:00 End Time: 10:39:30 Time On Btm: 2014.04.02 @ 06:38:00
 Time Off Btm: 2014.04.02 @ 09:03:00

TEST COMMENT: 1st Open 30 minutes Weak building blow built to 1 1/4 inches into a 5 gallon bucket of water.
 1st Shut in 45 minutes No blow back.
 2nd Open 30 minutes Dead -flushed tool no help.
 2nd Shut in 45 minutes No blow back



PRESSURE SUMMARY

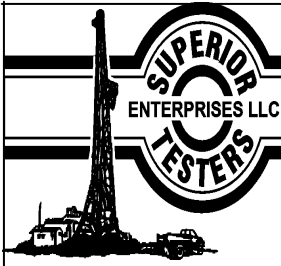
Time (Min.)	Pressure (psig)	Temp (deg F)	Annotation
0	2039.36	113.80	Initial Hydro-static
1	50.22	113.80	Open To Flow (1)
31	58.39	114.01	Shut-In(1)
74	882.43	114.98	End Shut-In(1)
75	62.26	114.86	Open To Flow (2)
105	71.72	115.46	Shut-In(2)
145	426.85	116.48	End Shut-In(2)
145	1999.97	116.80	Final Hydro-static

Recovery

Length (ft)	Description	Volume (bbl)
8.00	Very lightly oil spotted mud 100%	0.04

Gas Rates

	Choke (inches)	Pressure (psig)	Gas Rate (Mcf/d)



DRILL STEM TEST REPORT

TOOL DIAGRAM

Ritchie Exploration

7-13s-28w-Gove

8100 East 22nd N #700
Wichita Kansas 67278

Mendenhall 7c #1

Job Ticket: 18309

DST#: 4

ATTN: Max Lovely

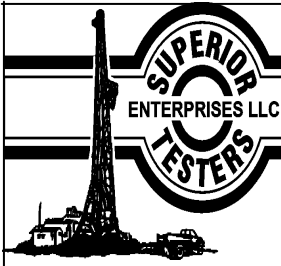
Test Start: 2014.04.02 @ 04:48:00

Tool Information

Drill Pipe:	Length: 3956.00 ft	Diameter: 3.80 inches	Volume: 55.49 bbl	Tool Weight: 2000.00 lb
Heavy Wt. Pipe:	Length: 0.00 ft	Diameter: 0.00 inches	Volume: 0.00 bbl	Weight set on Packer: 20000.00 lb
Drill Collar:	Length: 122.14 ft	Diameter: 2.25 inches	Volume: 0.60 bbl	Weight to Pull Loose: 82000.00 lb
			<u>Total Volume: 56.09 bbl</u>	Tool Chased 0.00 ft
Drill Pipe Above KB:	8.14 ft			String Weight: Initial 59000.00 lb
Depth to Top Packer:	4098.00 ft			Final 59000.00 lb
Depth to Bottom Packer:	ft			
Interval between Packers:	44.00 ft			
Tool Length:	72.00 ft			
Number of Packers:	2	Diameter: 6.75 inches		

Tool Comments:

Tool Description	Length (ft)	Serial No.	Position	Depth (ft)	Accum. Lengths
Shut In Tool	5.00			4075.00	
Hydraulic tool	5.00			4080.00	
Jars	6.00			4086.00	
Safety Joint	2.00			4088.00	
Top Packer	5.00			4093.00	
Packer	5.00			4098.00	28.00 Bottom Of Top Packer
Perforations	39.00			4137.00	
Recorder	0.00	6838	Inside	4137.00	
Recorder	0.00	8931	Outside	4137.00	
Bull Plug	5.00			4142.00	44.00 Anchor Tool
Total Tool Length:	72.00				



DRILL STEM TEST REPORT

FLUID SUMMARY

Ritchie Exploration

7-13s-28w-Gove

8100 East 22nd N #700
Wichita Kansas 67278

Mendenhall 7c #1

Job Ticket: 18309

DST#: 4

ATTN: Max Lovely

Test Start: 2014.04.02 @ 04:48:00

Mud and Cushion Information

Mud Type: Gel Chem

Cushion Type:

Oil API:

deg API

Mud Weight: 9.00 lb/gal

Cushion Length:

ft

Water Salinity:

ppm

Viscosity: 57.00 sec/qt

Cushion Volume:

bbl

Water Loss: 7.00 in³

Gas Cushion Type:

Resistivity: ohm.m

Gas Cushion Pressure:

psig

Salinity: 2200.00 ppm

Filter Cake: 1.00 inches

Recovery Information

Recovery Table

Length ft	Description	Volume bbl
8.00	Very lightly oil spotted mud 100%	0.039

Total Length: 8.00 ft Total Volume: 0.039 bbl

Num Fluid Samples: 0

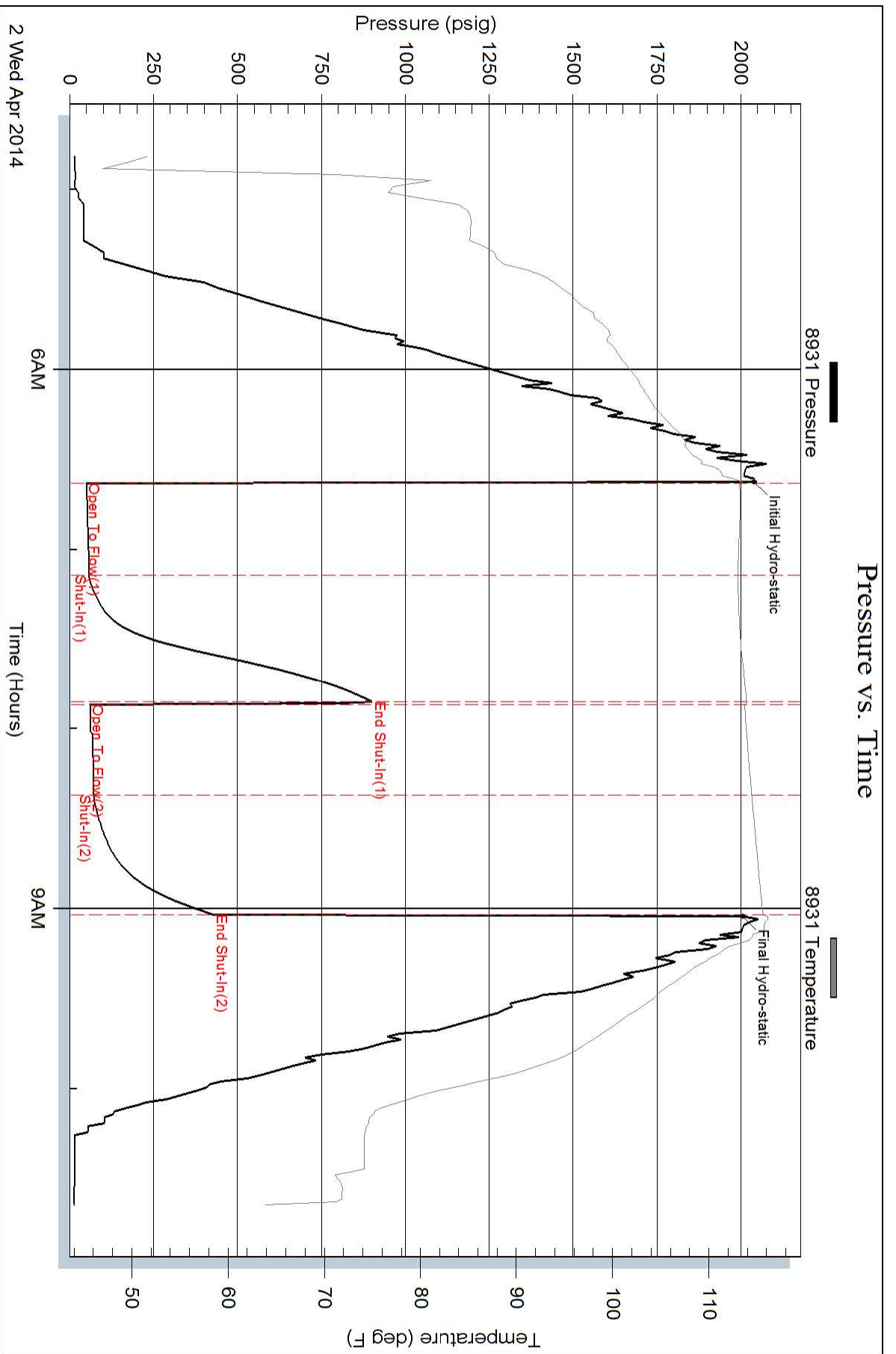
Num Gas Bombs: 0

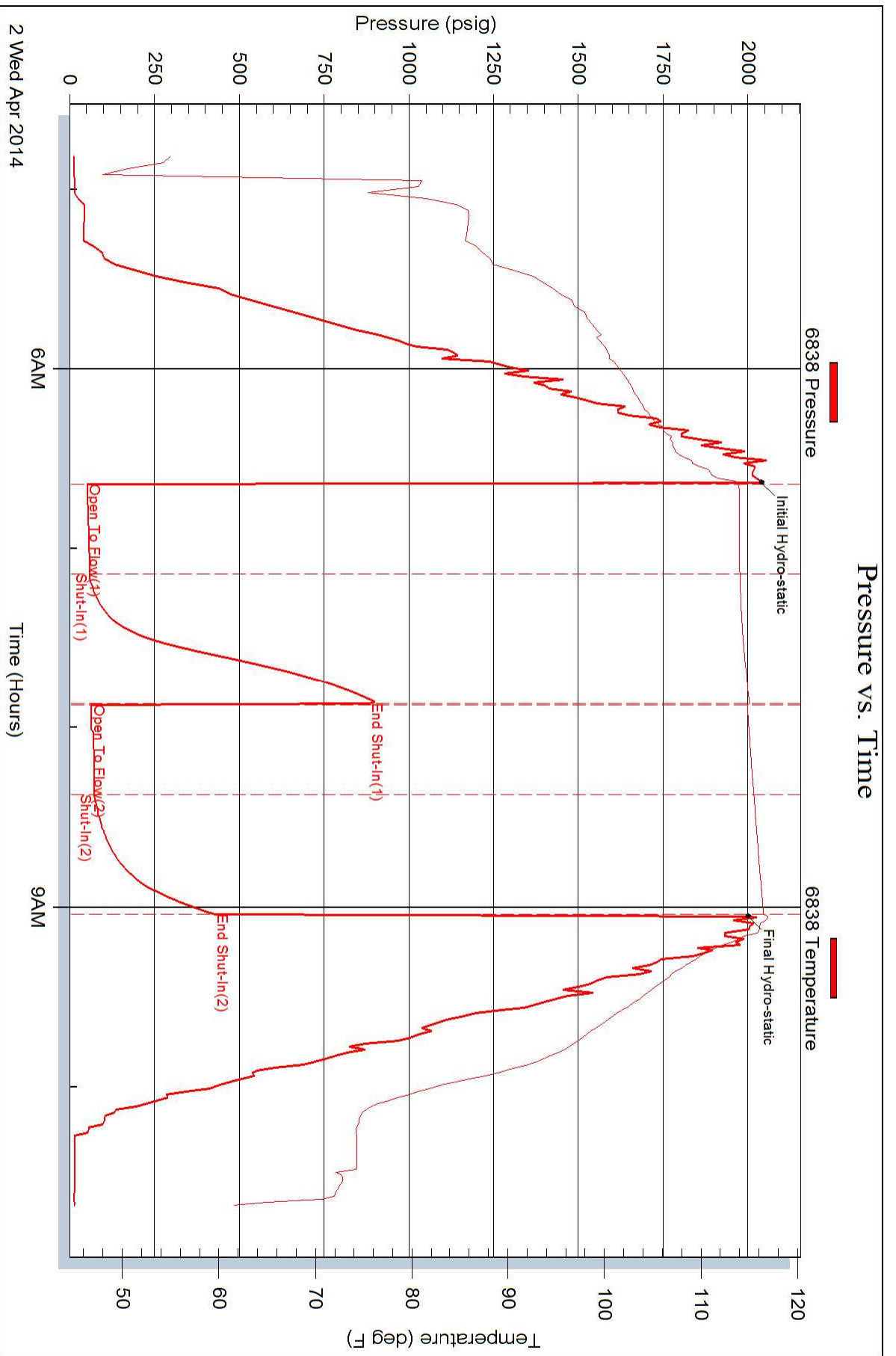
Serial #:

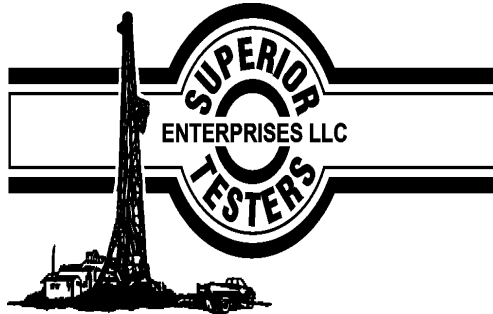
Laboratory Name:

Laboratory Location:

Recovery Comments:







DRILL STEM TEST REPORT

Prepared For: **Ritchie Exploration**

8100 East 22nd N #700
Wichita Kansas 67278

ATTN: Max Lovely

Mendenhall 7c #1

7-13s-28w-Gove

Start Date: 2014.04.03 @ 02:15:00

End Date: 2014.04.03 @ 09:32:30

Job Ticket #: 18310 DST #: 5

Superior Testers Enterprises LLC
PO Box 138 Great Bend KS 67530
1-800-792-6902

Printed: 2014.04.03 @ 11:24:12

Ritchie Exploration

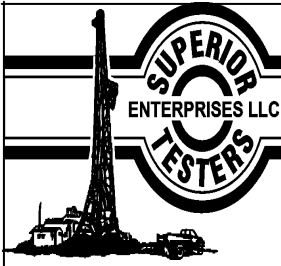
7-13s-28w-Gove

Mendenhall 7c #1

DST # 5

Pleasanton/ Marmaton

2014.04.03



DRILL STEM TEST REPORT

Ritchie Exploration
 8100 East 22nd N #700
 Wichita Kansas 67278
 ATTN: Max Lovely

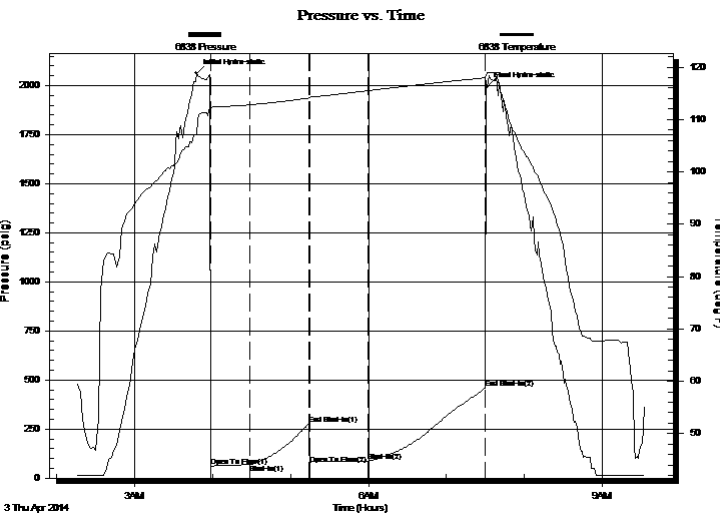
7-13s-28w-Gove
Mendenhall 7c #1
 Job Ticket: 18310 **DST#: 5**
 Test Start: 2014.04.03 @ 02:15:00

GENERAL INFORMATION:

Formation: **Pleasanton/ Marmaton**
 Deviated: No Whipstock: ft (KB)
 Time Tool Opened: 03:58:30
 Time Test Ended: 09:32:30
 Interval: **4147.00 ft (KB) To 4203.00 ft (KB) (TVD)**
 Total Depth: 4203.00 ft (KB) (TVD)
 Hole Diameter: 7.88 inches Hole Condition: Poor
 Test Type: Conventional Bottom Hole (Initial)
 Tester: Shane Konzem
 Unit No: 3315/80/Scott City
 Reference Elevations: 2716.00 ft (KB)
 2712.00 ft (CF)
 KB to GR/CF: 4.00 ft

Serial #: 6838 Inside
 Press@RunDepth: 87.48 psig @ 4197.92 ft (KB) Capacity: 5000.00 psig
 Start Date: 2014.04.03 End Date: 2014.04.03 Last Calib.: 2014.04.03
 Start Time: 02:15:00 End Time: 09:32:30 Time On Btm: 2014.04.03 @ 03:47:30
 Time Off Btm: 2014.04.03 @ 07:31:30

TEST COMMENT: 1st Open/ 30 Minutes. Weak blow built to 3 inches into bucket of water.
 1st Shut In/ 45 Minutes. No blow back.
 2nd Open/ 45 Minutes. Weak blow built to 3 inches into bucket of water.
 2nd Shut In/ 90 Minutes. No blow back.



PRESSURE SUMMARY

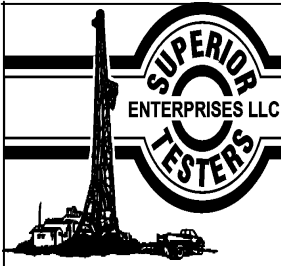
Time (Min.)	Pressure (psig)	Temp (deg F)	Annotation
0	2063.12	107.23	Initial Hydro-static
11	58.26	112.30	Open To Flow (1)
41	69.20	112.81	Shut-In(1)
87	275.53	114.09	End Shut-In(1)
87	70.85	114.08	Open To Flow (2)
132	87.48	115.51	Shut-In(2)
223	458.45	117.98	End Shut-In(2)
224	1994.37	118.88	Final Hydro-static

Recovery

Length (ft)	Description	Volume (bbl)
32.00	10% oil cut 90% mud	0.16
63.00	5% oil cut 95% mud	0.31

Gas Rates

Choke (inches)	Pressure (psig)	Gas Rate (Mcf/d)



DRILL STEM TEST REPORT

Ritchie Exploration
 8100 East 22nd N #700
 Wichita Kansas 67278
 ATTN: Max Lovely

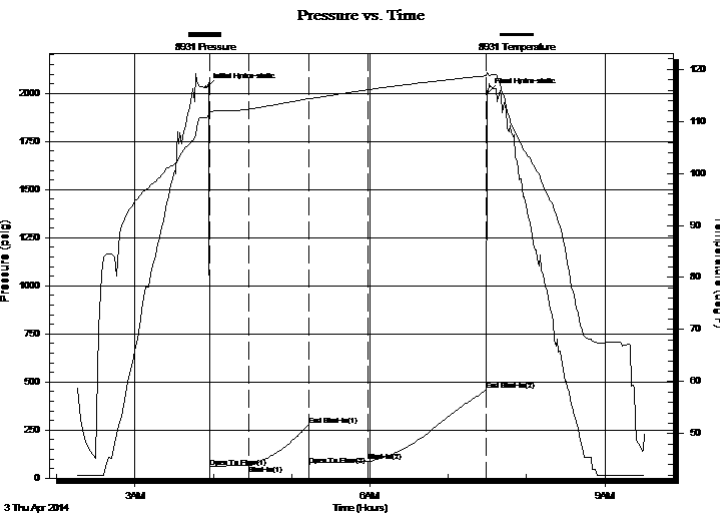
7-13s-28w-Gove
Mendenhall 7c #1
 Job Ticket: 18310 **DST#: 5**
 Test Start: 2014.04.03 @ 02:15:00

GENERAL INFORMATION:

Formation: **Pleasanton/ Marmaton**
 Deviated: No Whipstock: ft (KB) Test Type: Conventional Bottom Hole (Initial)
 Time Tool Opened: 03:58:30 Tester: Shane Konzem
 Time Test Ended: 09:32:30 Unit No: 3315/80/Scott City
 Interval: **4147.00 ft (KB) To 4203.00 ft (KB) (TVD)** Reference Elevations: 2716.00 ft (KB)
 Total Depth: 4203.00 ft (KB) (TVD) 2712.00 ft (CF)
 Hole Diameter: 7.88 inches Hole Condition: Poor KB to GR/CF: 4.00 ft

Serial #: 8931 Outside
 Press@RunDepth: 458.10 psig @ 4197.92 ft (KB) Capacity: 5000.00 psig
 Start Date: 2014.04.03 End Date: 2014.04.03 Last Calib.: 2014.04.03
 Start Time: 02:15:00 End Time: 09:31:00 Time On Btm: 2014.04.03 @ 03:54:30
 Time Off Btm: 2014.04.03 @ 07:30:30

TEST COMMENT: 1st Open/ 30 Minutes. Weak blow built to 3 inches into bucket of water.
 1st Shut In/ 45 Minutes. No blow back.
 2nd Open/ 45 Minutes. Weak blow built to 3 inches into bucket of water.
 2nd Shut In/ 90 Minutes. No blow back.



PRESSURE SUMMARY

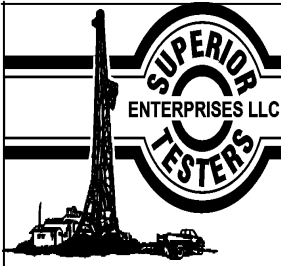
Time (Min.)	Pressure (psig)	Temp (deg F)	Annotation
0	2031.08	110.77	Initial Hydro-static
3	56.57	111.69	Open To Flow (1)
33	67.72	112.37	Shut-In(1)
79	277.16	114.38	End Shut-In(1)
79	68.80	114.34	Open To Flow (2)
124	86.33	116.09	Shut-In(2)
215	458.10	118.77	End Shut-In(2)
216	2005.01	119.14	Final Hydro-static

Recovery

Length (ft)	Description	Volume (bbl)
32.00	10% oil cut 90% mud	0.16
63.00	5% oil cut 95% mud	0.31

Gas Rates

Choke (inches)	Pressure (psig)	Gas Rate (Mcf/d)



DRILL STEM TEST REPORT

TOOL DIAGRAM

Ritchie Exploration

7-13s-28w-Gove

8100 East 22nd N #700
Wichita Kansas 67278

Mendenhall 7c #1

Job Ticket: 18310

DST#: 5

ATTN: Max Lovely

Test Start: 2014.04.03 @ 02:15:00

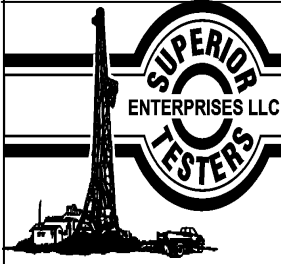
Tool Information

Drill Pipe:	Length: 4016.00 ft	Diameter: 3.80 inches	Volume: 56.33 bbl	Tool Weight: 2000.00 lb
Heavy Wt. Pipe:	Length: 0.00 ft	Diameter: 0.00 inches	Volume: 0.00 bbl	Weight set on Packer: 20000.00 lb
Drill Collar:	Length: 122.14 ft	Diameter: 2.25 inches	Volume: 0.60 bbl	Weight to Pull Loose: 80000.00 lb
			Total Volume: 56.93 bbl	Tool Chased 0.00 ft
Drill Pipe Above KB:	19.14 ft			String Weight: Initial 50000.00 lb
Depth to Top Packer:	4147.00 ft			Final 52000.00 lb
Depth to Bottom Packer:	ft			
Interval between Packers:	55.92 ft			
Tool Length:	83.92 ft			
Number of Packers:	2	Diameter: 6.75 inches		

Tool Comments:

Tool Description	Length (ft)	Serial No.	Position	Depth (ft)	Accum. Lengths
Shut In Tool	5.00			4124.00	
Hydraulic tool	5.00			4129.00	
Jars	6.00			4135.00	
Safety Joint	2.00			4137.00	
Top Packer	5.00			4142.00	
Packer	5.00			4147.00	28.00 Bottom Of Top Packer
Anchor	5.00			4152.00	
Change Over Sub	0.75			4152.75	
Drill Pipe	31.42			4184.17	
Change Over Sub	0.75			4184.92	
Anchor	13.00			4197.92	
Recorder	0.00	6838	Inside	4197.92	
Recorder	0.00	8931	Outside	4197.92	
Bull Plug	5.00			4202.92	55.92 Anchor Tool

Total Tool Length: 83.92



DRILL STEM TEST REPORT

FLUID SUMMARY

Ritchie Exploration

7-13s-28w-Gove

8100 East 22nd N #700
Wichita Kansas 67278

Mendenhall 7c #1

Job Ticket: 18310

DST#: 5

ATTN: Max Lovely

Test Start: 2014.04.03 @ 02:15:00

Mud and Cushion Information

Mud Type: Gel Chem

Mud Weight: 9.00 lb/gal

Viscosity: 58.00 sec/qt

Water Loss: 6.40 in³

Resistivity: ohm.m

Salinity: 1700.00 ppm

Filter Cake: 1.00 inches

Cushion Type:

Cushion Length: ft

Cushion Volume: bbl

Gas Cushion Type:

Gas Cushion Pressure: psig

Oil API:

Water Salinity: deg API

ppm

Recovery Information

Recovery Table

Length ft	Description	Volume bbl
32.00	10% oil cut 90% mud	0.157
63.00	5% oil cut 95% mud	0.310

Total Length: 95.00 ft Total Volume: 0.467 bbl

Num Fluid Samples: 0

Num Gas Bombs: 0

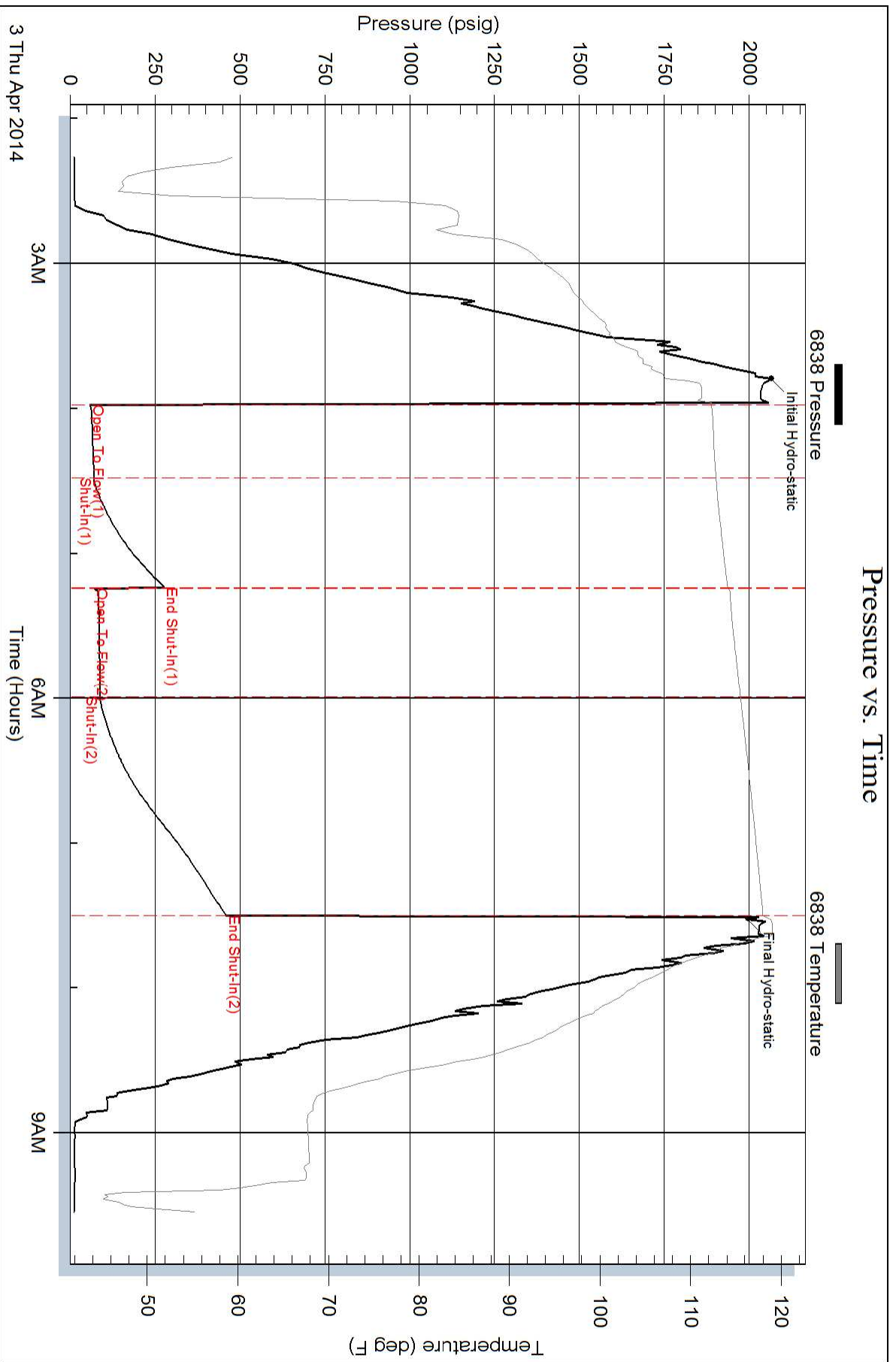
Serial #:

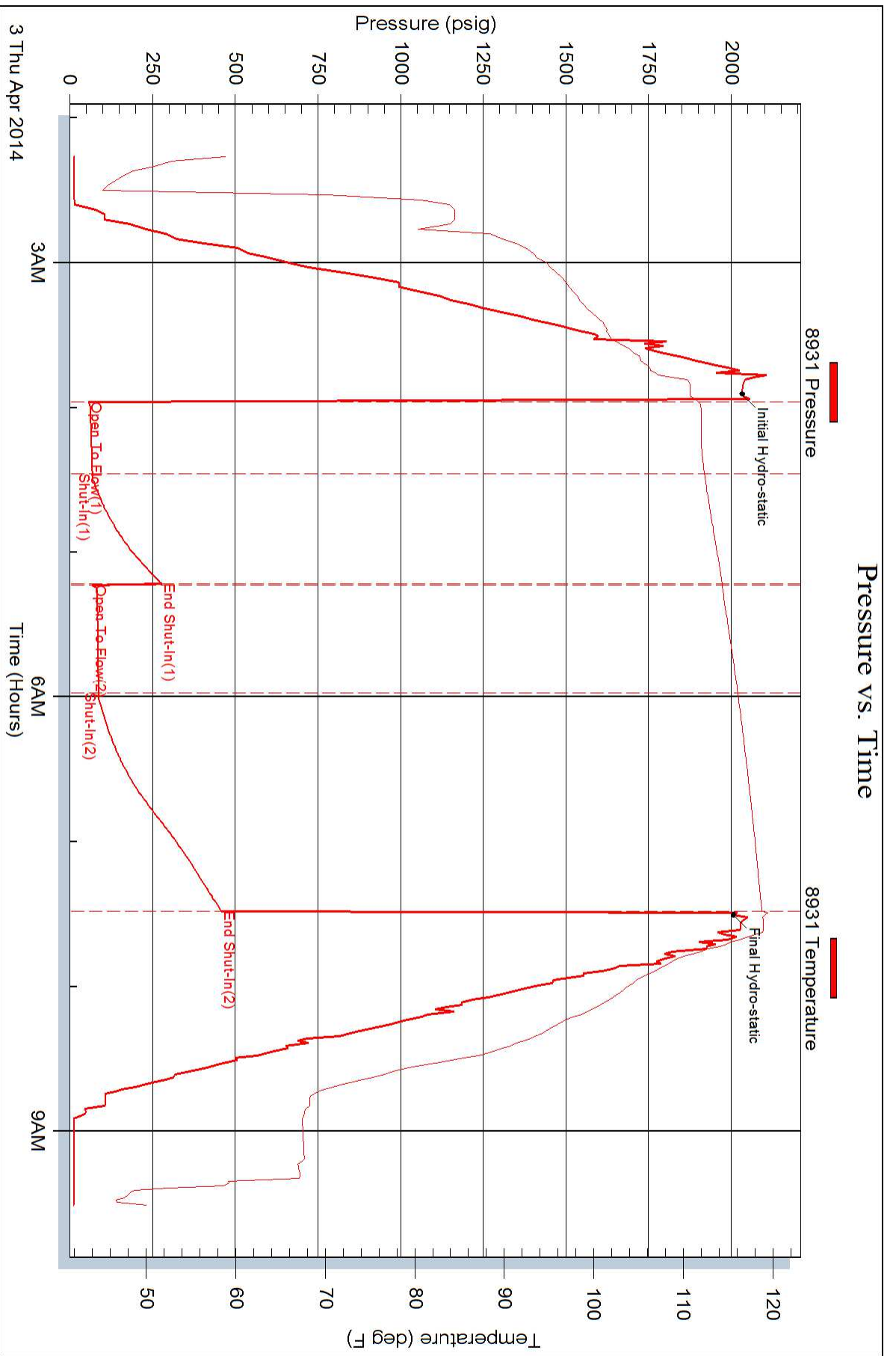
Laboratory Name:

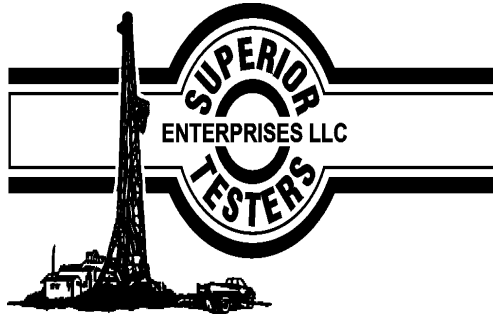
Laboratory Location:

Recovery Comments:

Pressure vs. Time







DRILL STEM TEST REPORT

Prepared For: **Ritchie Exploration**

8100 East 22nd N #700
Wichita Kansas 67278

ATTN: Max Lovely

Mendenhall 7c #1

7-13s-28w-Gove

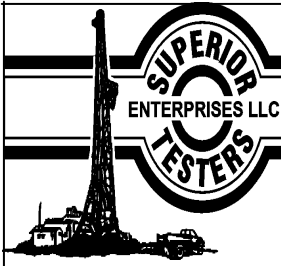
Start Date: 2014.04.04 @ 15:05:00

End Date: 2014.04.04 @ 21:56:30

Job Ticket #: 18311 DST #: 6

Superior Testers Enterprises LLC
PO Box 138 Great Bend KS 67530
1-800-792-6902

Printed: 2014.04.04 @ 23:25:19



DRILL STEM TEST REPORT

TOOL DIAGRAM

Ritchie Exploration

7-13s-28w-Gove

8100 East 22nd N #700
Wichita Kansas 67278

Mendenhall 7c #1

Job Ticket: 18311

DST#: 6

ATTN: Max Lovely

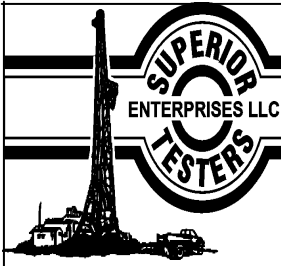
Test Start: 2014.04.04 @ 15:05:00

Tool Information

Drill Pipe:	Length: 4157.00 ft	Diameter: 3.80 inches	Volume: 58.31 bbl	Tool Weight: 2000.00 lb
Heavy Wt. Pipe:	Length: 0.00 ft	Diameter: 0.00 inches	Volume: 0.00 bbl	Weight set on Packer: 20000.00 lb
Drill Collar:	Length: 122.14 ft	Diameter: 2.25 inches	Volume: 0.60 bbl	Weight to Pull Loose: 86000.00 lb
			<u>Total Volume: 58.91 bbl</u>	Tool Chased 0.00 ft
Drill Pipe Above KB:	7.14 ft			String Weight: Initial 62000.00 lb
Depth to Top Packer:	4300.00 ft			Final 62000.00 lb
Depth to Bottom Packer:	ft			
Interval between Packers:	120.01 ft			
Tool Length:	148.01 ft			
Number of Packers:	2	Diameter: 6.75 inches		
Tool Comments:				

Tool Description	Length (ft)	Serial No.	Position	Depth (ft)	Accum. Lengths
Shut In Tool	5.00			4277.00	
Hydraulic tool	5.00			4282.00	
Jars	6.00			4288.00	
Safety Joint	2.00			4290.00	
Top Packer	5.00			4295.00	
Packer	5.00			4300.00	28.00 Bottom Of Top Packer
Anchor	5.00			4305.00	
Change Over Sub	0.75			4305.75	
Drill Pipe	94.51			4400.26	
Change Over Sub	0.75			4401.01	
Anchor	14.00			4415.01	
Recorder	0.00	6838	Inside	4415.01	
Recorder	0.00	8931	Outside	4415.01	
Bull Plug	5.00			4420.01	120.01 Anchor Tool

Total Tool Length: 148.01



DRILL STEM TEST REPORT

FLUID SUMMARY

Ritchie Exploration

7-13s-28w-Gove

8100 East 22nd N #700
Wichita Kansas 67278

Mendenhall 7c #1

Job Ticket: 18311

DST#: 6

ATTN: Max Lovely

Test Start: 2014.04.04 @ 15:05:00

Mud and Cushion Information

Mud Type: Gel Chem

Mud Weight: 9.00 lb/gal

Viscosity: 56.00 sec/qt

Water Loss: 6.40 in³

Resistivity: ohm.m

Salinity: 1800.00 ppm

Filter Cake: 1.00 inches

Cushion Type:

Cushion Length: ft

Cushion Volume: bbl

Gas Cushion Type:

Gas Cushion Pressure: psig

Oil API:

Water Salinity: deg API

ppm

Recovery Information

Recovery Table

Length ft	Description	Volume bbl
315.00	100% mud, trace of oil	3.306
126.00	30% mud, 70% water	1.767
0.00	chloride recov 26000	0.000
0.00	resist recov. .22 at 40 degrees	0.000

Total Length: 441.00 ft

Total Volume: 5.073 bbl

Num Fluid Samples: 0

Num Gas Bombs: 0

Serial #:

Laboratory Name:

Laboratory Location:

Recovery Comments:

Serial #: 6838

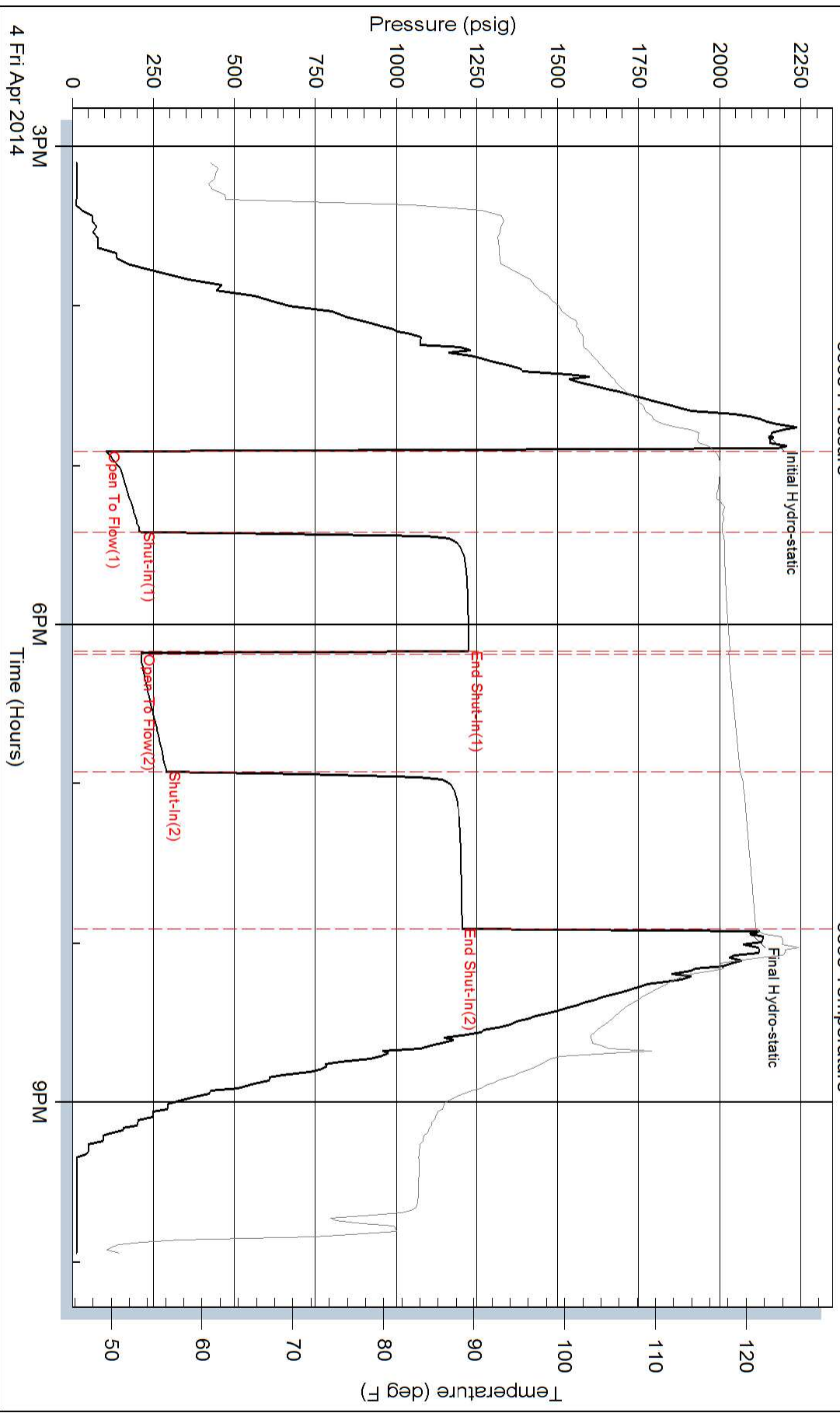
Inside

Ritchie Exploration

Mendenhall 7c #1

DST Test Number: 6

Pressure vs. Time

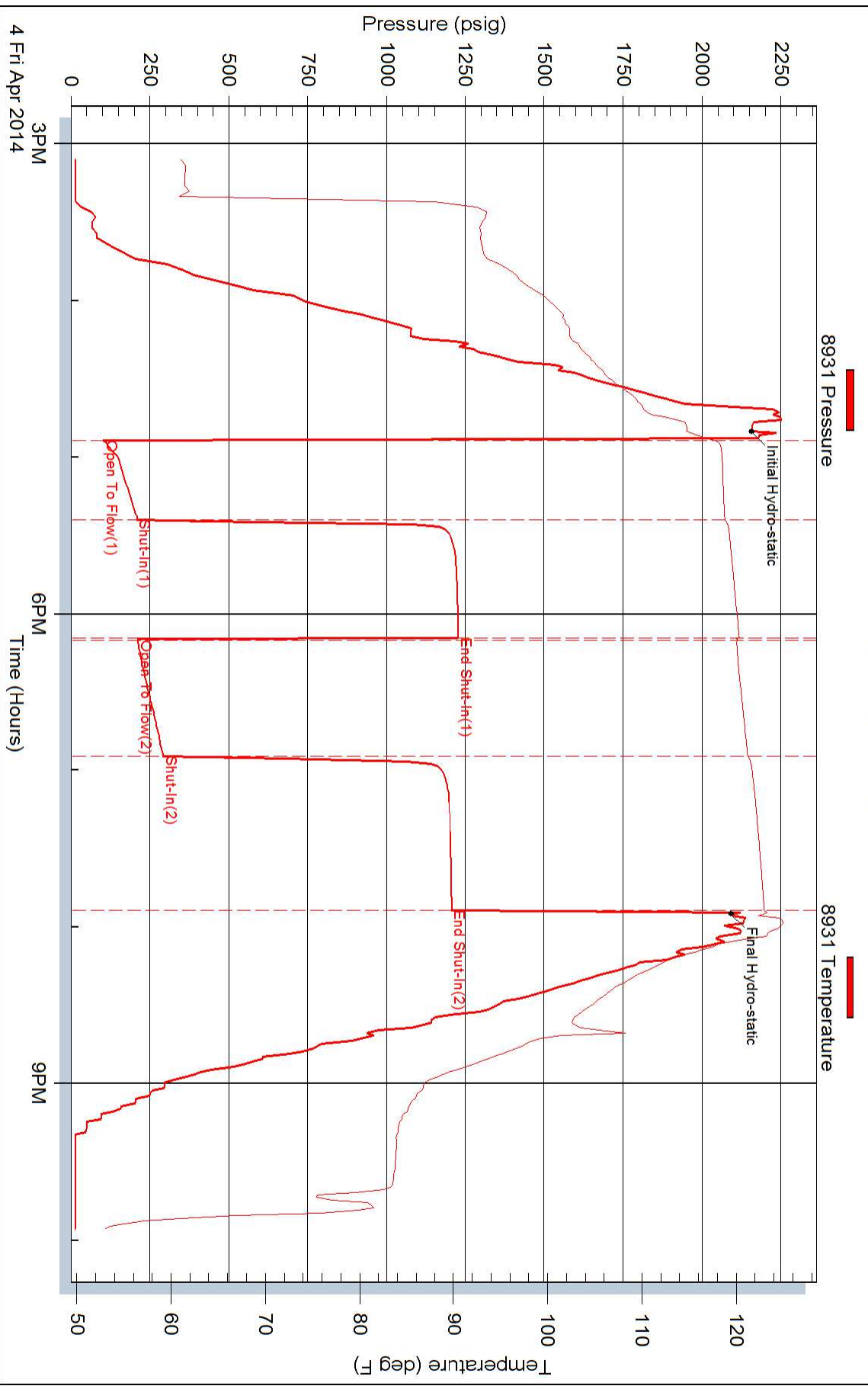


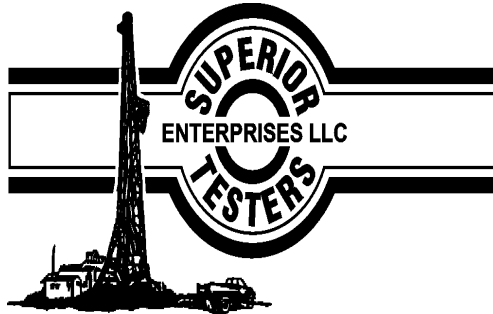
Superior Testers Enterprises LLC

Ref. No: 18311

Printed: 2014.04.04 @ 23:25:19

Pressure vs. Time





DRILL STEM TEST REPORT

Prepared For: **Ritchie Exploration**

8100 East 22nd N #700
Wichita Kansas 67278

ATTN: Max Lovely

Mendenhall 7c #1

7-13s-28w-Gove

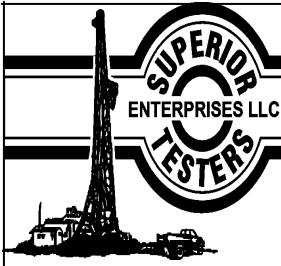
Start Date: 2014.04.05 @ 09:05:00

End Date: 2014.04.05 @ 17:51:00

Job Ticket #: 18312 DST #: 7

Superior Testers Enterprises LLC
PO Box 138 Great Bend KS 67530
1-800-792-6902

Printed: 2014.04.05 @ 19:14:00



DRILL STEM TEST REPORT

Ritchie Exploration
 8100 East 22nd N #700
 Wichita Kansas 67278
 ATTN: Max Lovely

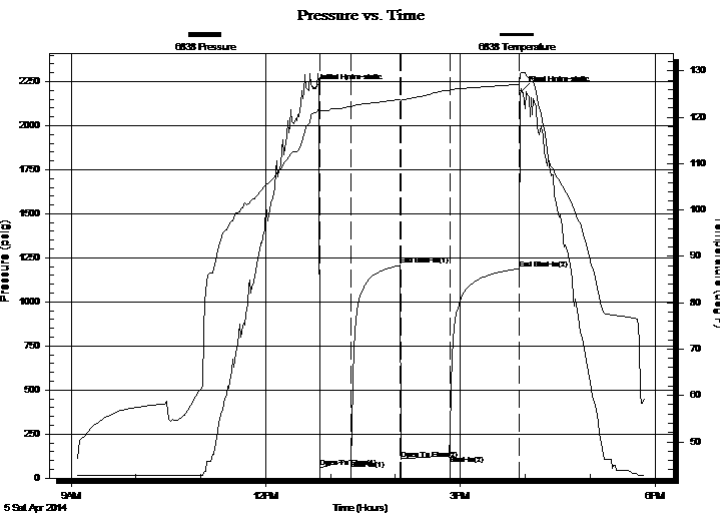
7-13s-28w-Gove
Mendenhall 7c #1
 Job Ticket: 18312 **DST#: 7**
 Test Start: 2014.04.05 @ 09:05:00

GENERAL INFORMATION:

Formation: **Mississippian**
 Deviated: No Whipstock: ft (KB)
 Time Tool Opened: 12:50:30
 Time Test Ended: 17:51:00
 Test Type: Conventional Bottom Hole (Initial)
 Tester: Shane Konzem
 Unit No: 3315/80/Scott City
 Interval: **4440.00 ft (KB) To 4488.00 ft (KB) (TVD)**
 Reference Elevations: 2716.00 ft (KB)
 Total Depth: 4488.00 ft (KB) (TVD) 2712.00 ft (CF)
 Hole Diameter: 7.88 inches Hole Condition: Poor KB to GR/CF: 4.00 ft

Serial #: 6838 Inside
 Press@RunDepth: 127.62 psig @ 4483.00 ft (KB) Capacity: 5000.00 psig
 Start Date: 2014.04.05 End Date: 2014.04.05 Last Calib.: 2014.04.05
 Start Time: 09:05:00 End Time: 17:51:00 Time On Btm: 2014.04.05 @ 12:44:30
 Time Off Btm: 2014.04.05 @ 15:57:00

TEST COMMENT: 1st Open/ 30 Minutes. Weak blow built to 3 inches into 5 gallon bucket of water.
 1st Shut In/ 45 Minutes. No blow back
 2nd Open/ 45 Minutes. Weak blow built to 3 inches into water.
 2nd Shut In/ 60 Minutes. No blow back.



PRESSURE SUMMARY

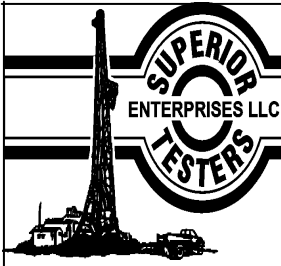
Time (Min.)	Pressure (psig)	Temp (deg F)	Annotation
0	2210.53	120.94	Initial Hydro-static
6	58.74	121.51	Open To Flow (1)
34	100.10	122.36	Shut-In(1)
81	1207.42	123.89	End Shut-In(1)
81	108.90	123.72	Open To Flow (2)
126	127.62	125.83	Shut-In(2)
191	1188.81	127.12	End Shut-In(2)
193	2198.35	129.57	Final Hydro-static

Recovery

Length (ft)	Description	Volume (bbl)
132.00	100% mud with trace of oil	0.74

Gas Rates

Choke (inches)	Pressure (psig)	Gas Rate (Mcf/d)



DRILL STEM TEST REPORT

Ritchie Exploration
 8100 East 22nd N #700
 Wichita Kansas 67278
 ATTN: Max Lovely

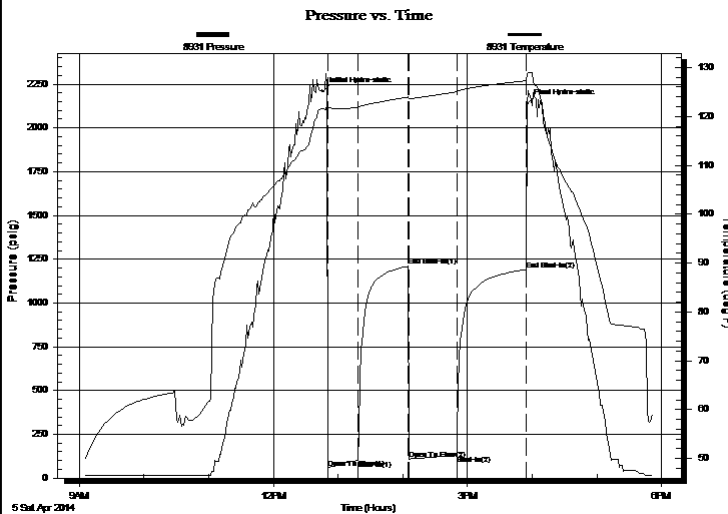
7-13s-28w-Gove
Mendenhall 7c #1
 Job Ticket: 18312 **DST#: 7**
 Test Start: 2014.04.05 @ 09:05:00

GENERAL INFORMATION:

Formation: **Mississippian**
 Deviated: No Whipstock: ft (KB)
 Time Tool Opened: 12:50:30
 Time Test Ended: 17:51:00
 Interval: **4440.00 ft (KB) To 4488.00 ft (KB) (TVD)**
 Total Depth: 4488.00 ft (KB) (TVD)
 Hole Diameter: 7.88 inches Hole Condition: Poor
 Test Type: Conventional Bottom Hole (Initial)
 Tester: Shane Konzem
 Unit No: 3315/80/Scott City
 Reference Elevations: 2716.00 ft (KB)
 2712.00 ft (CF)
 KB to GR/CF: 4.00 ft

Serial #: 8931 Outside
 Press@RunDepth: 1191.10 psig @ 4483.00 ft (KB) Capacity: 5000.00 psig
 Start Date: 2014.04.05 End Date: 2014.04.05 Last Calib.: 2014.04.05
 Start Time: 09:05:00 End Time: 17:51:30 Time On Btm: 2014.04.05 @ 12:45:30
 Time Off Btm: 2014.04.05 @ 15:55:30

TEST COMMENT: 1st Open/ 30 Minutes. Weak blow built to 3 inches into 5 gallon bucket of water.
 1st Shut In/ 45 Minutes. No blow back
 2nd Open/ 45 Minutes. Weak blow built to 3 inches into water.
 2nd Shut In/ 60 Minutes. No blow back.



PRESSURE SUMMARY

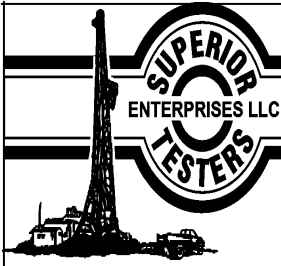
Time (Min.)	Pressure (psig)	Temp (deg F)	Annotation
0	2209.01	121.54	Initial Hydro-static
5	58.45	121.80	Open To Flow (1)
33	101.92	121.85	Shut-In(1)
80	1209.31	123.96	End Shut-In(1)
80	108.00	123.68	Open To Flow (2)
125	129.04	125.03	Shut-In(2)
189	1191.10	127.31	End Shut-In(2)
190	2136.04	128.50	Final Hydro-static

Recovery

Length (ft)	Description	Volume (bbl)
132.00	100% mud with trace of oil	0.74

Gas Rates

Choke (inches)	Pressure (psig)	Gas Rate (Mcf/d)



DRILL STEM TEST REPORT

TOOL DIAGRAM

Ritchie Exploration

7-13s-28w-Gove

8100 East 22nd N #700
Wichita Kansas 67278

Mendenhall 7c #1

Job Ticket: 18312

DST#: 7

ATTN: Max Lovely

Test Start: 2014.04.05 @ 09:05:00

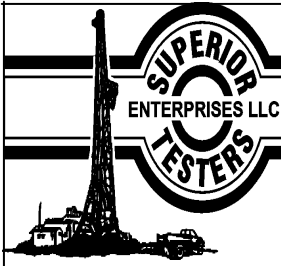
Tool Information

Drill Pipe:	Length: 4315.00 ft	Diameter: 3.80 inches	Volume: 60.53 bbl	Tool Weight: 2000.00 lb
Heavy Wt. Pipe:	Length: 0.00 ft	Diameter: 0.00 inches	Volume: 0.00 bbl	Weight set on Packer: 20000.00 lb
Drill Collar:	Length: 122.00 ft	Diameter: 2.25 inches	Volume: 0.60 bbl	Weight to Pull Loose: 64000.00 lb
			<u>Total Volume: 61.13 bbl</u>	Tool Chased 0.00 ft
Drill Pipe Above KB:	25.00 ft			String Weight: Initial 58000.00 lb
Depth to Top Packer:	4440.00 ft			Final 59000.00 lb
Depth to Bottom Packer:	ft			
Interval between Packers:	48.00 ft			
Tool Length:	76.00 ft			
Number of Packers:	2	Diameter: 6.75 inches		

Tool Comments:

Tool Description	Length (ft)	Serial No.	Position	Depth (ft)	Accum. Lengths
------------------	-------------	------------	----------	------------	----------------

Shut In Tool	5.00			4417.00	
Hydraulic tool	5.00			4422.00	
Jars	6.00			4428.00	
Safety Joint	2.00			4430.00	
Top Packer	5.00			4435.00	
Packer	5.00			4440.00	28.00 Bottom Of Top Packer
Perforations	43.00			4483.00	
Recorder	0.00	6838	Inside	4483.00	
Recorder	0.00	8931	Outside	4483.00	
Bull Plug	5.00			4488.00	48.00 Anchor Tool
Total Tool Length:	76.00				



DRILL STEM TEST REPORT

FLUID SUMMARY

Ritchie Exploration

7-13s-28w-Gove

8100 East 22nd N #700
Wichita Kansas 67278

Mendenhall 7c #1

Job Ticket: 18312

DST#: 7

ATTN: Max Lovely

Test Start: 2014.04.05 @ 09:05:00

Mud and Cushion Information

Mud Type: Gel Chem

Cushion Type:

Oil API:

deg API

Mud Weight: 9.00 lb/gal

Cushion Length:

ft

Water Salinity:

ppm

Viscosity: 53.00 sec/qt

Cushion Volume:

bbbl

Water Loss: 7.20 in³

Gas Cushion Type:

Resistivity: ohm.m

Gas Cushion Pressure:

psig

Salinity: 3000.00 ppm

Filter Cake: 1.00 inches

Recovery Information

Recovery Table

Length ft	Description	Volume bbl
132.00	100% mud with trace of oil	0.740

Total Length: 132.00 ft Total Volume: 0.740 bbl

Num Fluid Samples: 0

Num Gas Bombs: 0

Serial #:

Laboratory Name:

Laboratory Location:

Recovery Comments:

Serial #: 6838

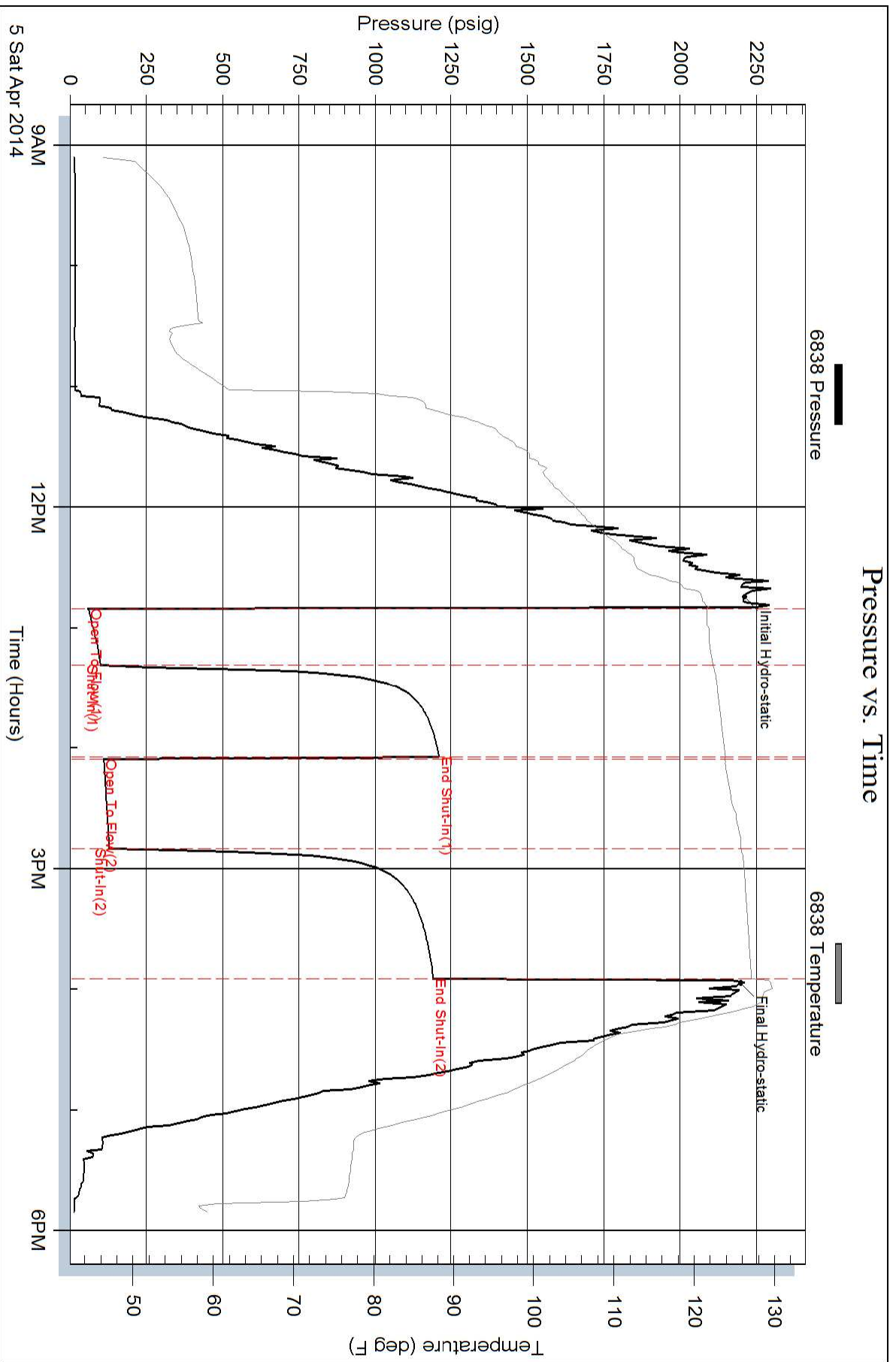
Inside

Ritchie Exploration

Mendenhall 7c #1

DST Test Number: 7

Pressure vs. Time

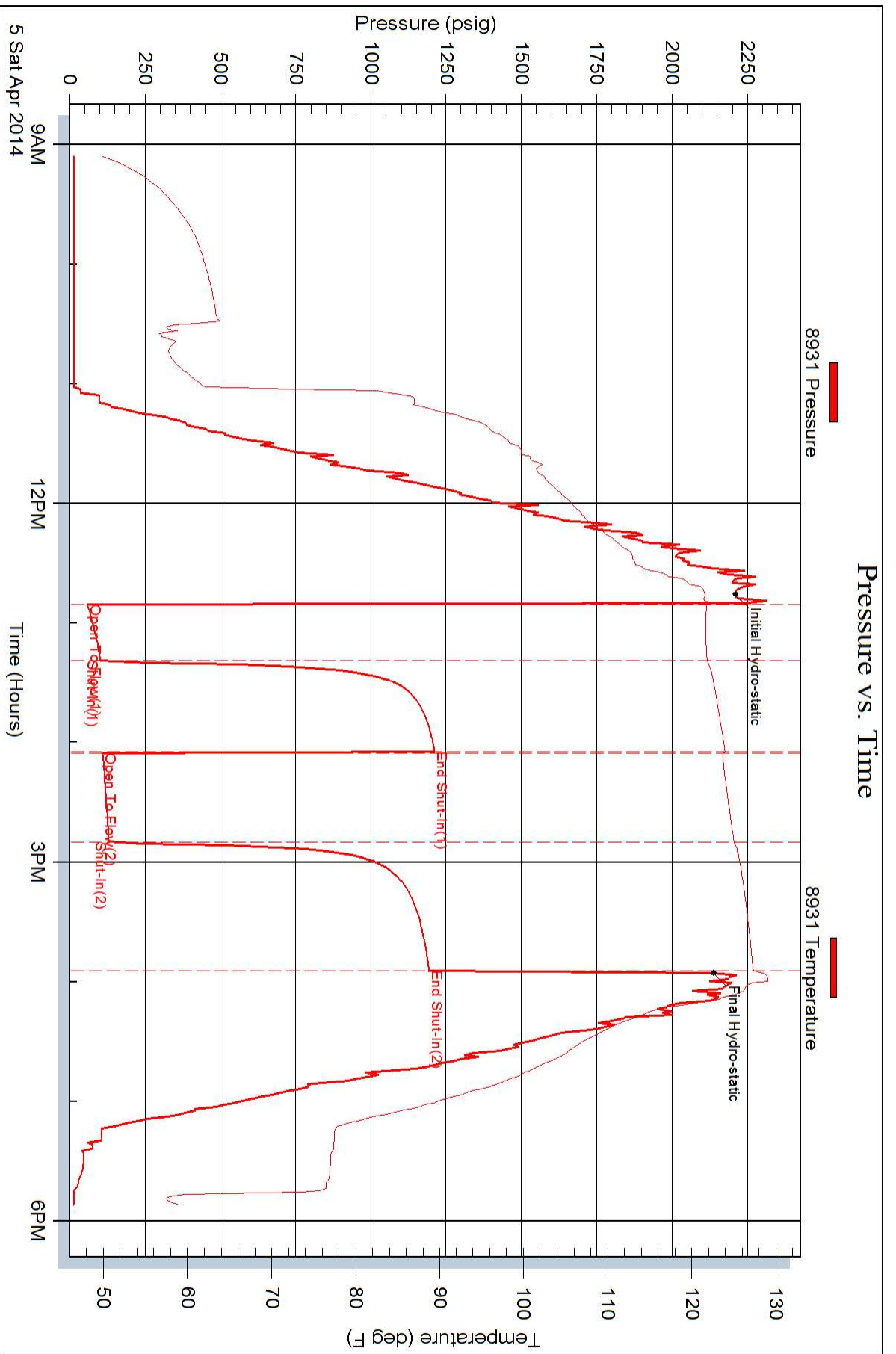


Serial #: 8931

Outside Ritchie Exploration

Mendenhall 7c #1

DST Test Number: 7



Superior Testers Enterprises LLC

Ref. No: 18312

Printed: 2014.04.05 @ 19:14:01