

15-063-00118

36-135-29w

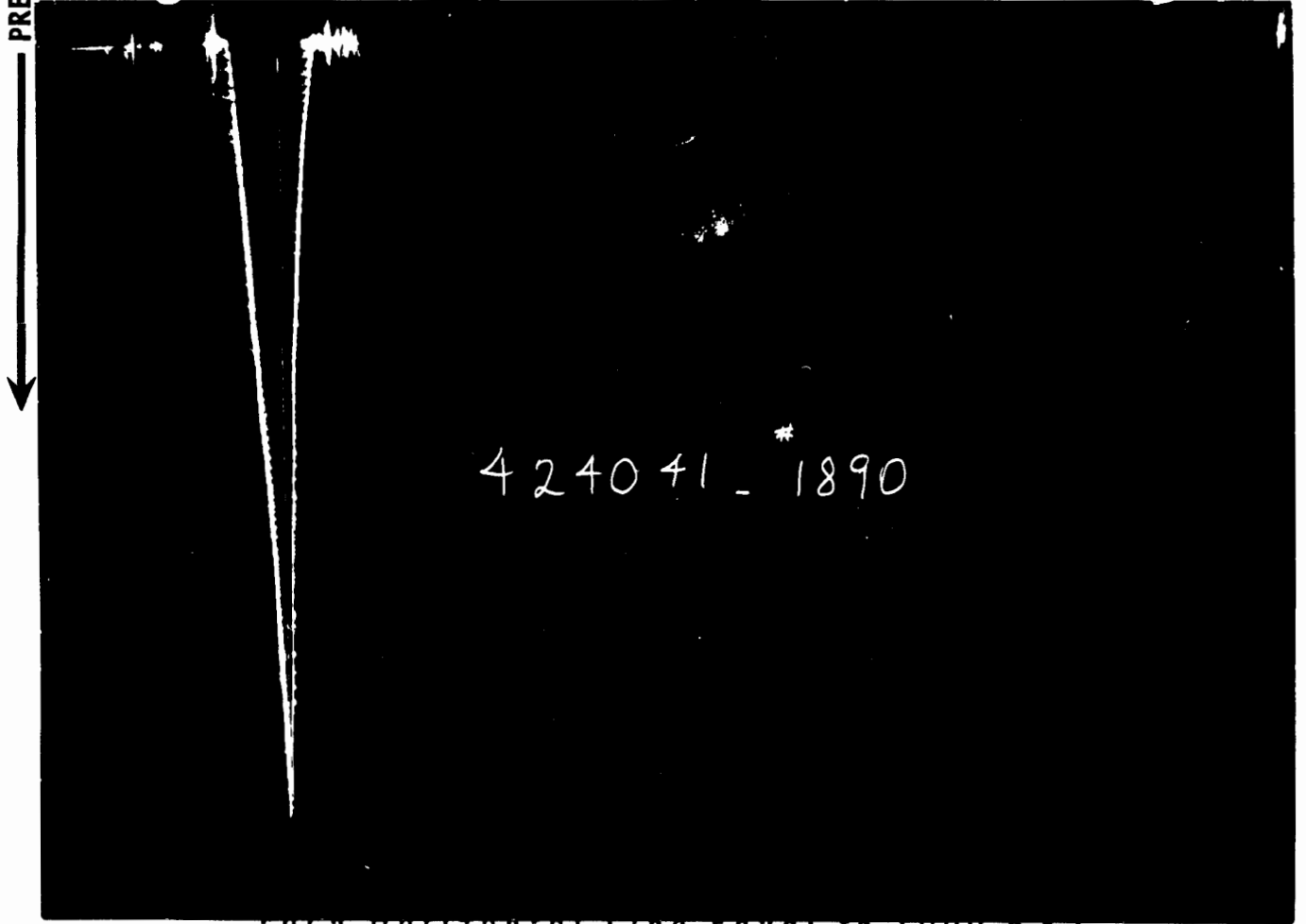
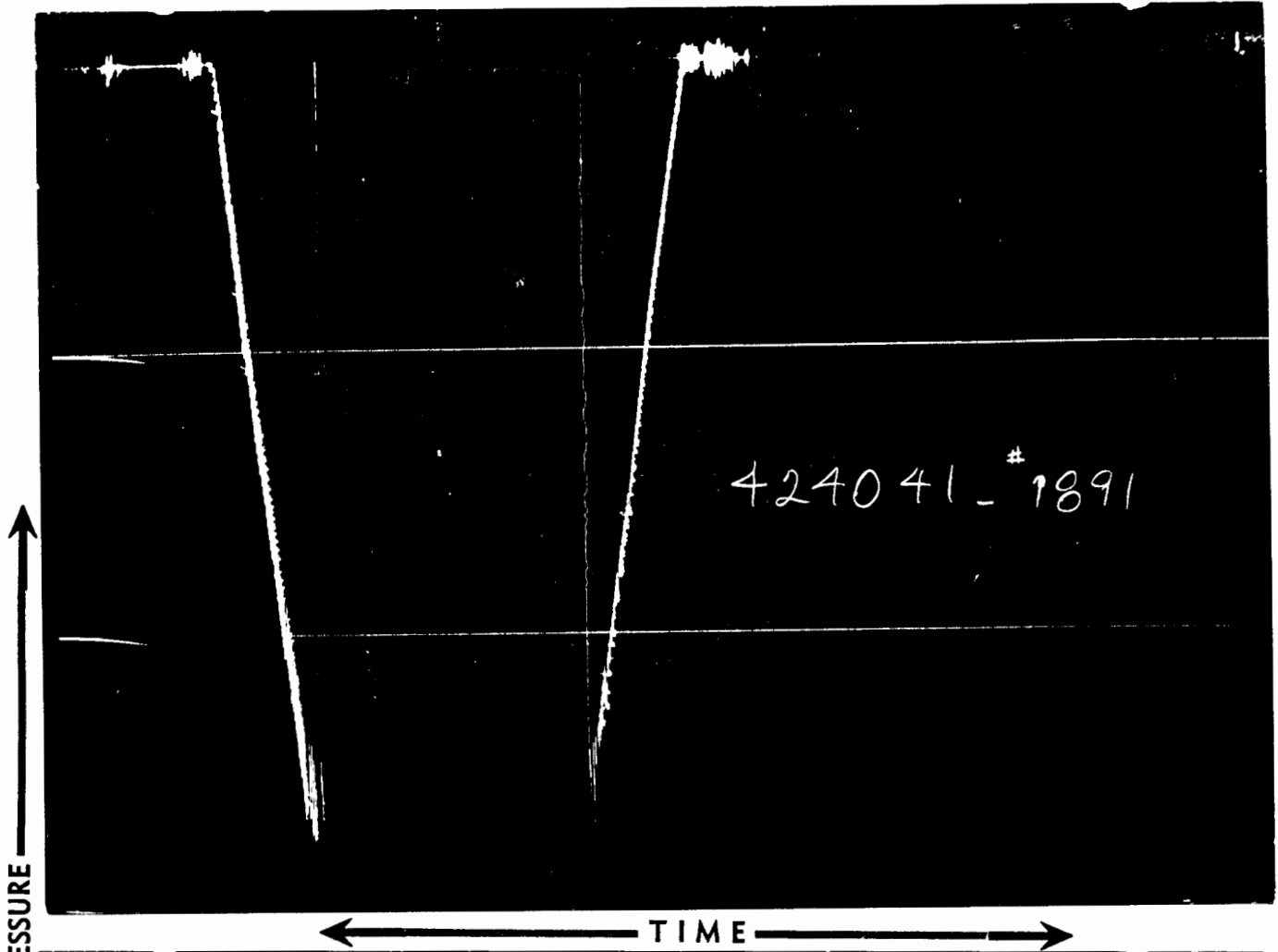
Flow Time	1st Min. 30	2nd Min. 103	Date	10-3-64	Ticket Number	424041
Closed In Pres. Time	1st Min. 30	2nd Min. 30	Kind of Job	OPEN HOLE	Halliburton District	HAYS
Pressure Readings	Field	Office Corrected	Tester	GROVER	Witness	CORNELL
Depth Top Gauge	4385' Ft.	NO Blanked Off	Drilling Contractor	LEBEN DRILLING, INCORPORATED		BM
BT. P.R.D. No.	1891	12 Hour Clock	Elevation	2788'	Top Packer	4378'
Initial Hydro Mud Pressure	2611	2557	Total Depth	4433'	Bottom Packer	4382'
Initial Closed in Pres.	86	77	Interval Tested	4382' - 4433'	Formation Tested	FORT SCOTT
Initial Flow Pres.	10	1 21 2 32	Casing or Hole Size	7 7/8"	Casing Perfs. Top	-
Final Flow Pres.	34	1 23 2 28	Surface Choke	1 1/4"	Bottom Choke	3/4"
Final Closed in Pres.	60	49	Size & Kind Drill Pipe	4 1/2" F.H.	Drill Collars Above Tester	-
Final Hydro Mud Pressure	2540	2516	Mud Weight	10.3	Mud Viscosity	46
Depth Cen. Gauge			Temperature	109 °F Est. °F Actual	Anchor Size ID	3.84" X 51'
BT. P.R.D. No.			Depths Mea. From	DERRICK FLOOR	Depth of Tester Valve	- Ft.
Initial Hydro Mud Pres.			Cushion	NONE	Depth Back Pres. Valve	- Ft.
Initial Closed in Pres.			Recovered	30' Feet of drilling mud with spots of oil		
Initial Flow Pres.		1	Recovered	Feet of		
Final Flow Pres.		2	Recovered	Feet of		
Final Closed in Pres.		1	Recovered	Feet of		
Final Hydro Mud Pres.		2	Recovered	Feet of		
Depth Bot. Gauge	4430' Ft.	YES Blanked Off	Oil A.P.I. Gravity		Water Spec. Gravity	
BT. P.R.D. No.	1890	12 Hour Clock	Gas Gravity		Surface Pressure	psi
Initial Hydro Mud Pres.	CLOCK STOPPED.		Tool Opened	6:30 PM A.M. P.M.	Tool Closed	9:15 PM A.M. P.M.
Initial Closed in Pres.	NO READINGS ARE		Remarks	Tool opened for a 30 minute first flow.		
Initial Flow Pres.	AVAILABLE.	1		Rotated tool for a 30 minute initial closed in pressure. Tool reopened with a weak blow for 25		
Final Flow Pres.		2		minutes and dead. Took a 30 minute final closed		
Final Closed in Pres.				in pressure. No special reading adaptable.		
Final Hydro Mud Pres.						

Legal Location Sec. - Twp. - Rng. C-SW-SW-36-13-29  
 Lease Name HOCKERSMITH  
 Well No. 1  
 Test No. 1  
 Field Area WILDGAT  
 County GOVE  
 Lease Owner/Company Name DUNIAP AND CORNELL  
 State KANSAS  
 Owner's District GOVE, KANSAS

FORMATION TEST DATA

5-c

\* Potentiometric Surface Reference to Rotary Table When Elevation Not Given, Fresh Water Corrected to 100° F.



Each horizontal line equal to 1000 p.s.i.