



**TRILOBITE
TESTING, INC.**

DRILL STEM TEST REPORT

Ritchie Exploration
P.O Box 783188
Wichita, Ks 67278
ATTN: Max Lovely

22-13s-31w Gove
#1 Selenke-Huelsman
Job Ticket: 48317 **DST#: 1**
Test Start: 2012.06.25 @ 15:48:00

GENERAL INFORMATION:

Formation: **Lansing "I, J"**
 Deviated: No Whipstock: ft (KB)
 Test Type: Conventional Bottom Hole (Initial)
 Time Tool Opened: 18:34:30
 Tester: Sam Esparza
 Time Test Ended: 23:28:15
 Unit No: 46
 Interval: **4198.00 ft (KB) To 4251.00 ft (KB) (TVD)**
 Reference Elevations: 2946.00 ft (KB)
 Total Depth: 4251.00 ft (KB) (TVD)
 2936.00 ft (CF)
 Hole Diameter: 7.88 inches
 Hole Condition: KB to GR/CF: 10.00 ft

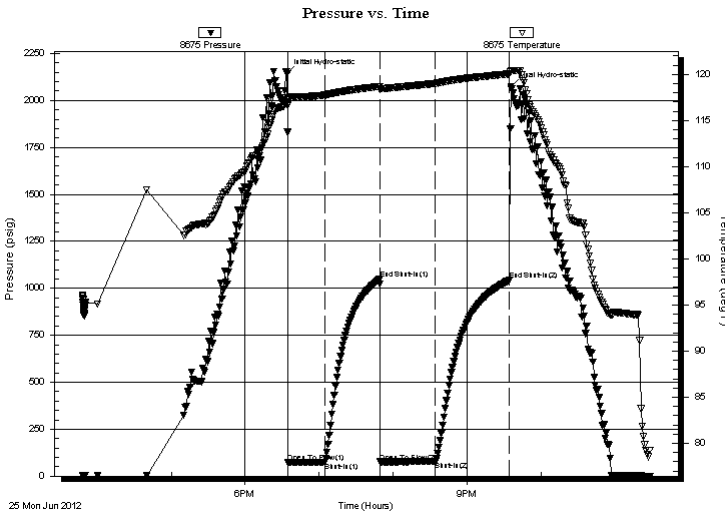
Serial #: 8675

Inside

Press @ Run Depth: 77.07 psig @ 4199.00 ft (KB) Capacity: 8000.00 psig
 Start Date: 2012.06.25 End Date: 2012.06.25 Last Calib.: 2012.06.25
 Start Time: 15:48:01 End Time: 23:28:15 Time On Btm: 2012.06.25 @ 18:34:00
 Time Off Btm: 2012.06.25 @ 21:36:00

TEST COMMENT: IF:4" Blow Died back to 3 1/4".
 IS: No return.
 FF: No blow.
 FS: No return.

PRESSURE SUMMARY



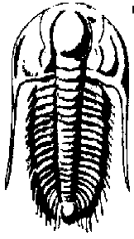
Time (Min.)	Pressure (psig)	Temp (deg F)	Annotation
0	2142.87	116.92	Initial Hydro-static
1	71.86	116.58	Open To Flow (1)
31	72.81	117.74	Shut-In(1)
75	1048.61	118.71	End Shut-In(1)
76	75.85	118.34	Open To Flow (2)
121	77.07	119.01	Shut-In(2)
181	1042.58	120.05	End Shut-In(2)
182	2074.06	120.41	Final Hydro-static

Recovery

Length (ft)	Description	Volume (bbl)
90.00	OSM 100m	0.44
10.00	OCM 5o 95m	0.05

Gas Rates

Choke (inches)	Pressure (psig)	Gas Rate (Mcf/d)



**TRILOBITE
TESTING, INC.**

DRILL STEM TEST REPORT

FLUID SUMMARY

Ritchie Exploration

22-13s-31w Gove

P.O Box 783188
Wichita, Ks 67278

#1 Selenke-Huelsman

Job Ticket: 48317

DST#: 1

ATTN: Max Lovely

Test Start: 2012.06.25 @ 15:48:00

Mud and Cushion Information

Mud Type: Gel Chem

Cushion Type:

Oil API:

deg API

Mud Weight: 9.00 lb/gal

Cushion Length:

ft

Water Salinity:

ppm

Viscosity: 58.00 sec/qt

Cushion Volume:

bbbl

Water Loss: 6.40 in³

Gas Cushion Type:

Resistivity: 0.00 ohm.m

Gas Cushion Pressure:

psig

Salinity: 2500.00 ppm

Filter Cake: 1.00 inches

Recovery Information

Recovery Table

Length ft	Description	Volume bbl
90.00	OSM 100m	0.443
10.00	OCM 5o 95m	0.049

Total Length: 100.00 ft

Total Volume: 0.492 bbl

Num Fluid Samples: 0

Num Gas Bombs: 0

Serial #:

Laboratory Name:

Laboratory Location:

Recovery Comments:

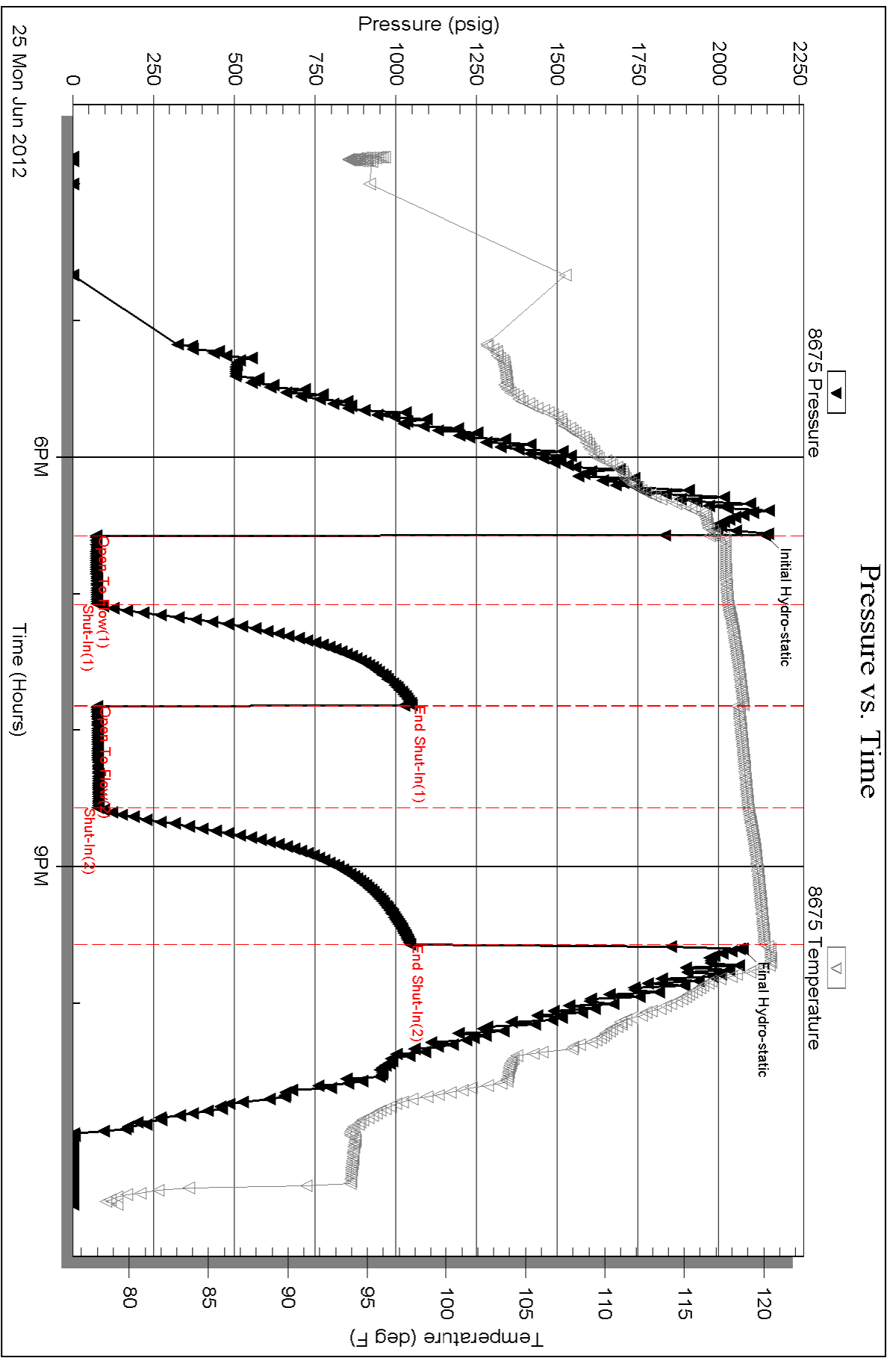
Serial #: 8675

Inside

Richie Exploration

#1 Selenke-Huelsman

DST Test Number: 1

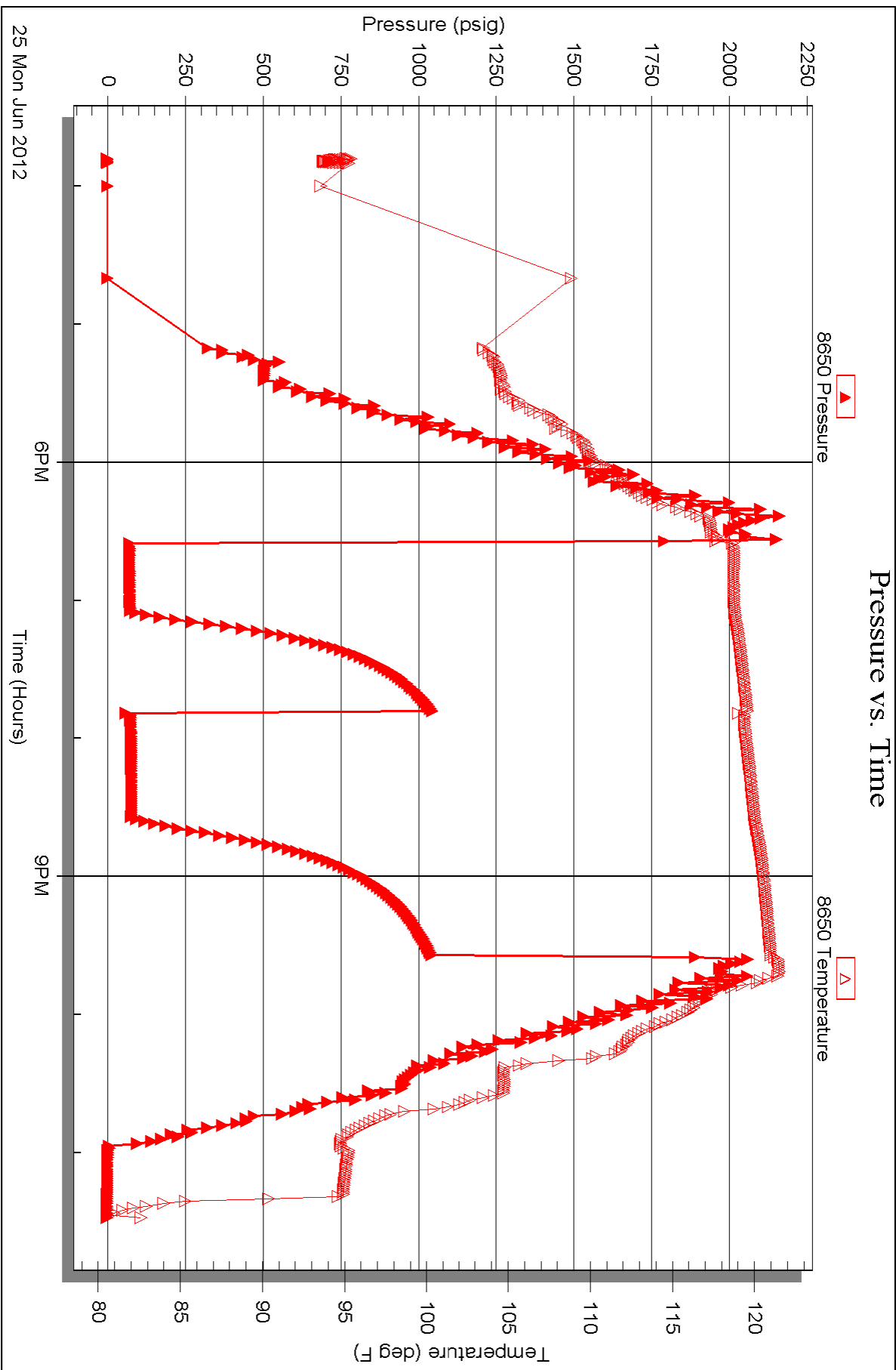


Serial #: 8650

Outside Ritchie Exploration

#1 Selenke-Huelsman

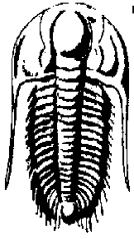
DST Test Number: 1



Triobite Testing, Inc

Ref. No: 48317

Printed: 2012.06.26 @ 07:15:22



**TRILOBITE
TESTING, INC.**

DRILL STEM TEST REPORT

FLUID SUMMARY

Ritchie Exploration

22-13s-31w Gove

P.O Box 783188
Wichita, Ks 67278

#1 Selenke-Huelsman

Job Ticket: 48318

DST#: 2

ATTN: Max Lovely

Test Start: 2012.06.26 @ 08:46:00

Mud and Cushion Information

Mud Type: Gel Chem

Cushion Type:

Oil API:

deg API

Mud Weight: 9.00 lb/gal

Cushion Length:

ft

Water Salinity:

ppm

Viscosity: 71.00 sec/qt

Cushion Volume:

bbbl

Water Loss: 7.60 in³

Gas Cushion Type:

Resistivity: 0.00 ohm.m

Gas Cushion Pressure:

psig

Salinity: 3300.00 ppm

Filter Cake: 2.00 inches

Recovery Information

Recovery Table

Length ft	Description	Volume bbl
5.00	M 100m with oil spots	0.025

Total Length: 5.00 ft Total Volume: 0.025 bbl

Num Fluid Samples: 0

Num Gas Bombs: 0

Serial #:

Laboratory Name:

Laboratory Location:

Recovery Comments:

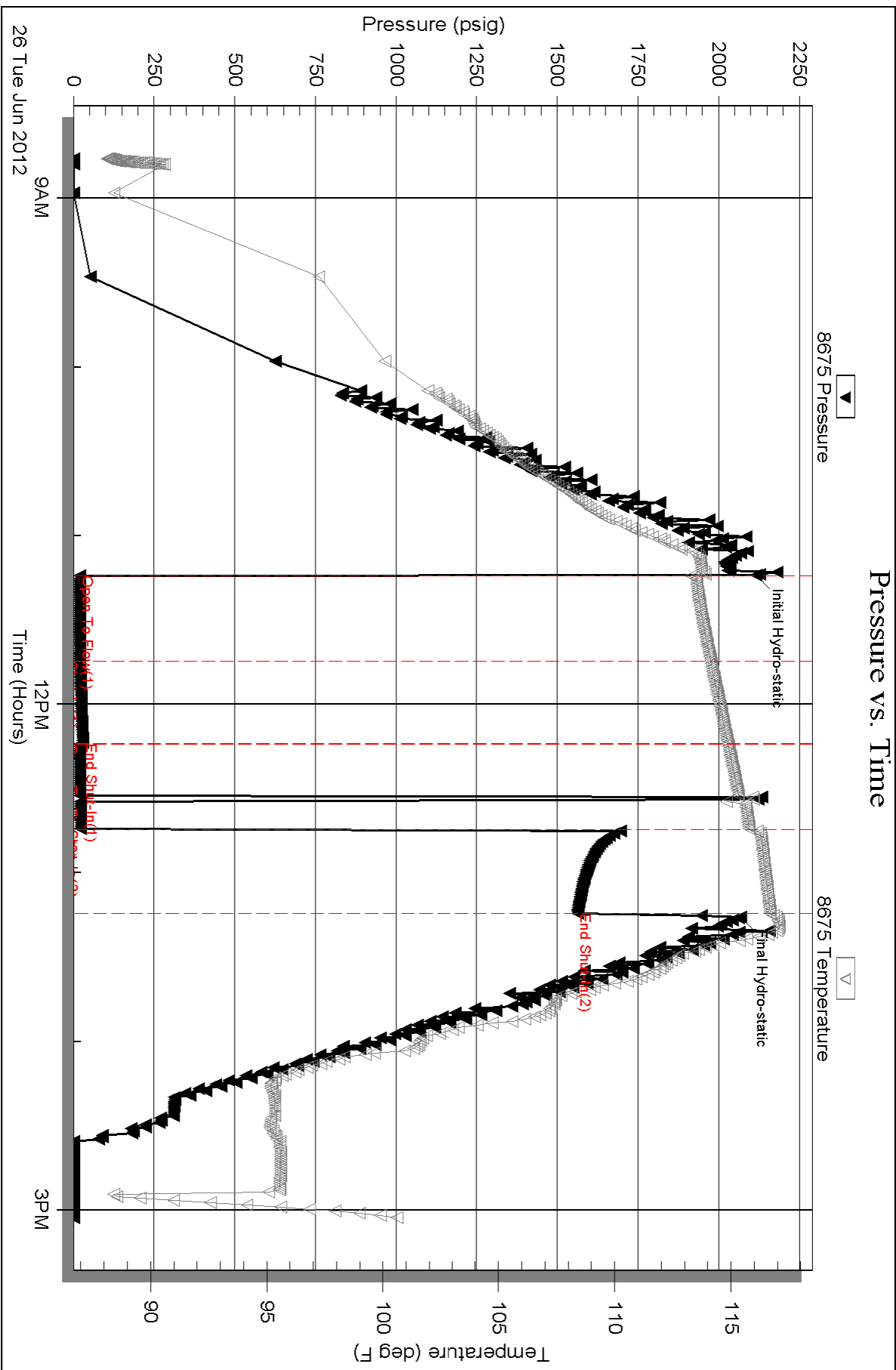
Serial #: 8675

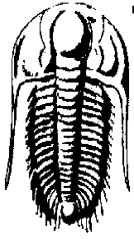
Inside

Ritchie Exploration

#1 Selenke-Huisman

DST Test Number: 2





**TRILOBITE
TESTING, INC.**

DRILL STEM TEST REPORT

Ritchie Exploration
P.O Box 783188
Wichita, Ks 67278
ATTN: Max Lovely

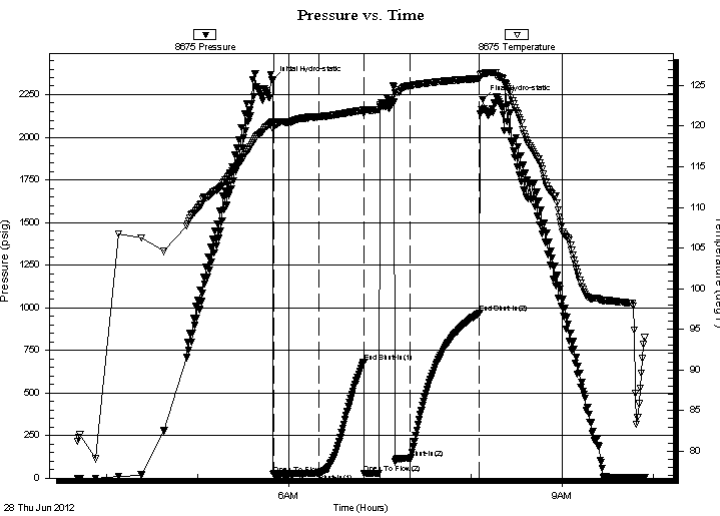
22-13s-31w Gove
#1 Selenke-Huelsman
Job Ticket: 48319 **DST#: 3**
Test Start: 2012.06.28 @ 03:41:00

GENERAL INFORMATION:

Formation: **Johnson**
Deviated: No Whipstock: ft (KB)
Time Tool Opened: 05:50:00
Time Test Ended: 09:55:00
Interval: **4562.00 ft (KB) To 4607.00 ft (KB) (TVD)**
Total Depth: 4607.00 ft (KB) (TVD)
Hole Diameter: 7.88 inches Hole Condition:
Test Type: Conventional Bottom Hole (Reset)
Tester: Sam Esparza
Unit No: 46
Reference Elevations: 2946.00 ft (KB)
2936.00 ft (CF)
KB to GR/CF: 10.00 ft

Serial #: 8675 Inside
Press @ Run Depth: 117.04 psig @ 4563.00 ft (KB) Capacity: 8000.00 psig
Start Date: 2012.06.28 End Date: 2012.06.28 Last Calib.: 2012.06.28
Start Time: 03:41:15 End Time: 09:55:00 Time On Btm: 2012.06.28 @ 05:49:45
Time Off Btm: 2012.06.28 @ 08:08:00

TEST COMMENT: IF: Weak blow.
IS: No return.
FF: 5" Blow died back to 4 1/2".
FS: No return.



PRESSURE SUMMARY

Time (Min.)	Pressure (psig)	Temp (deg F)	Annotation
0	2334.72	120.49	Initial Hydro-static
1	23.94	119.69	Open To Flow (1)
31	26.07	121.13	Shut-In(1)
60	679.82	121.95	End Shut-In(1)
60	28.22	121.55	Open To Flow (2)
91	117.04	124.96	Shut-In(2)
136	966.84	125.84	End Shut-In(2)
139	2219.92	126.47	Final Hydro-static

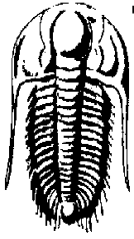
Recovery

Length (ft)	Description	Volume (bbl)
185.00	M 100m	0.91

* Recovery from multiple tests

Gas Rates

Choke (inches)	Pressure (psig)	Gas Rate (Mcf/d)



**TRILOBITE
TESTING, INC.**

DRILL STEM TEST REPORT

FLUID SUMMARY

Ritchie Exploration

22-13s-31w Gove

P.O Box 783188
Wichita, Ks 67278

#1 Selenke-Huelsman

Job Ticket: 48319

DST#: 3

ATTN: Max Lovely

Test Start: 2012.06.28 @ 03:41:00

Mud and Cushion Information

Mud Type: Gel Chem

Cushion Type:

Oil API:

deg API

Mud Weight: 9.00 lb/gal

Cushion Length:

ft

Water Salinity:

ppm

Viscosity: 57.00 sec/qt

Cushion Volume:

bbbl

Water Loss: 8.79 in³

Gas Cushion Type:

Resistivity: 0.00 ohm.m

Gas Cushion Pressure:

psig

Salinity: 3500.00 ppm

Filter Cake: 1.00 inches

Recovery Information

Recovery Table

Length ft	Description	Volume bbl
185.00	M 100m	0.910

Total Length: 185.00 ft Total Volume: 0.910 bbl

Num Fluid Samples: 0

Num Gas Bombs: 0

Serial #:

Laboratory Name:

Laboratory Location:

Recovery Comments:

Serial #: 8675

Inside

Ritchie Exploration

#1 Selenke-Huelsman

DST Test Number: 3

