



POST OFFICE BOX 169
GREAT BEND, KANSAS 67530

DRILL-STEM TEST DATA

Well Name	KISNER #1	Test No.	ONE
Well Number	ONE	Zone Tested	LANSING
Company	AMERICAN DRILLING CO.	Date	JULY 6, 1971
Comp. Rep.	H. E. SCHWERDTFEGER	Tester	V. WILLIAMS #014
Contractor	H-30 DRILLING CO.	Ticket No.	7353
Location	32-13-20 ELLIS COUNTY	Elevation	2343 KB

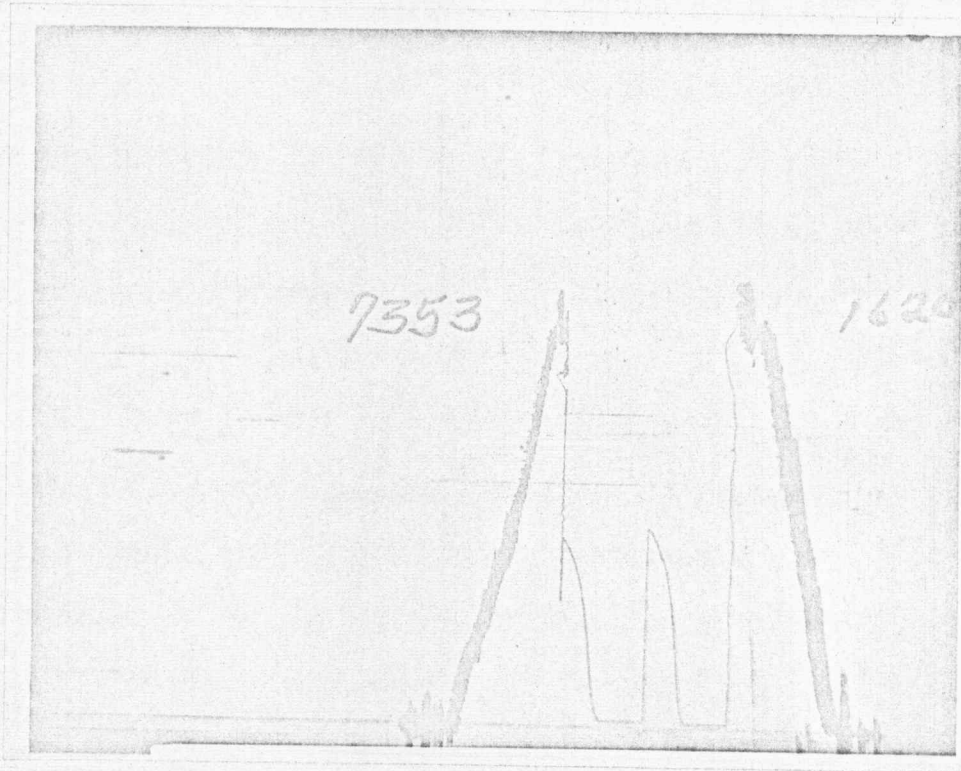
Recorder No.	1620	Clock Range	12 hr	Recorder No.	1055	Clock Range	12 hr
Depth	3654	Depth	3657	Initial Hydro Mud Press.	1996	Initial Hydro Mud Press.	2029
Initial Shut-in Press.	953	Initial Shut-in Press.	978	Initial Flow Press.	21	Initial Flow Press.	52
Final Flow Press.	27	Final Flow Press.	57	Final Shut-in Press.	899	Final Shut-in Press.	927
Final Hydro Mud Press.	1972	Final Hydro Mud Press.	1999	Temperature	104	Tool Open Before I: S. I.	30 Mins.
Mud Weight	10.1	Viscosity	48	Initial Shut-in	30	Mins.	
Fluid Loss		Flow Period	30	Mins.			
Interval Tested	3612 to 3659	Final Shut-in	30	Mins.			
Top Packer Depth	3607	Surface Choke Size	1"				
Bottom Packer Depth	3612	Bottom Choke Size	5/8"				
Total Depth	3659	Main Hole Size	7 7/8				
Drill Pipe Size	4 1/2 FH	Wt.		Rubber Size	6 3/4		
Drill Collar I. D.		Ft. Run					
Recovery—Total Feet	15						
Recovered	15	Feet Of	DRILLING MUD WITH FEW SPOTS OIL IN TOOL				
Recovered		Feet Of					
Recovered		Feet Of					
Recovered		Feet Of					

Remarks

VERY WEAK BLOW FOR FOUR MINUTES

ALL PRESSURES CORRECTED

DRILL STEM TEST NO. 1



TOP RECORDER



BOTTOM RECORDER



POST OFFICE BOX 169

GREAT BEND, KANSAS 67530

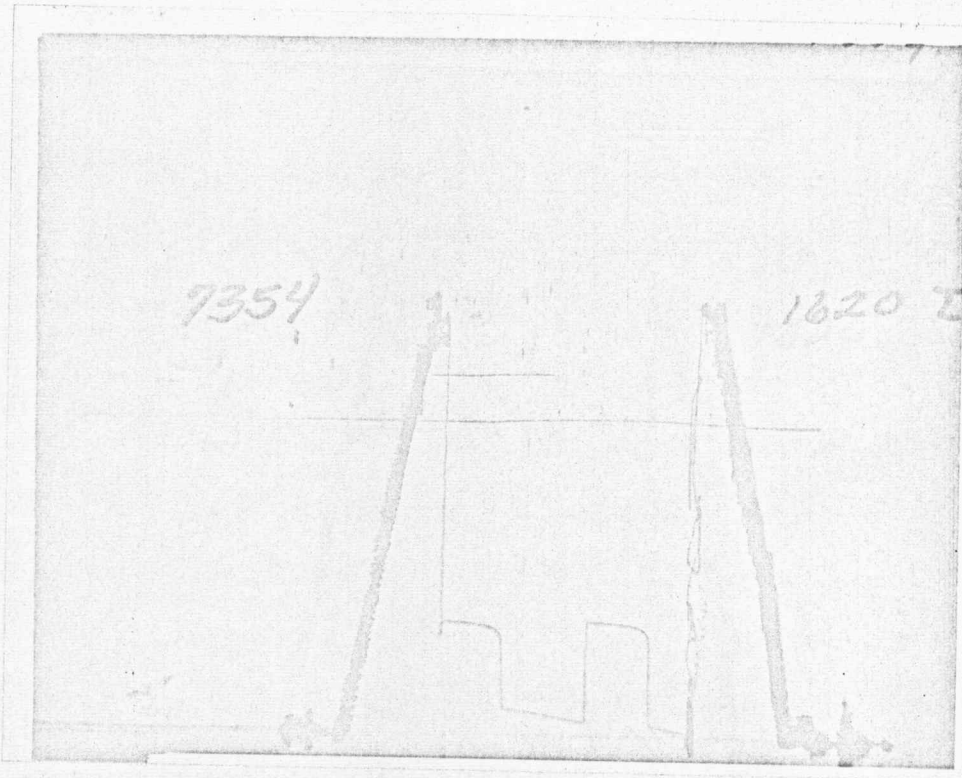
DRILL-STEM TEST DATA

Well Name	KISNER #1	Test No.	TWO
Well Number	ONE	Zone Tested	LANSING/K.C.
Company	AMERICAN DRILLING CO.	Date	JULY 7, 1971
Comp. Rep.	H.E. SCHWERDTFEGER	Tester	V. WILLIAMS #012
Contractor	H-30 DRILLING CO.	Ticket No.	7354
Location	32-13-20 ELLIS COUNTY	Elevation	2343 KB

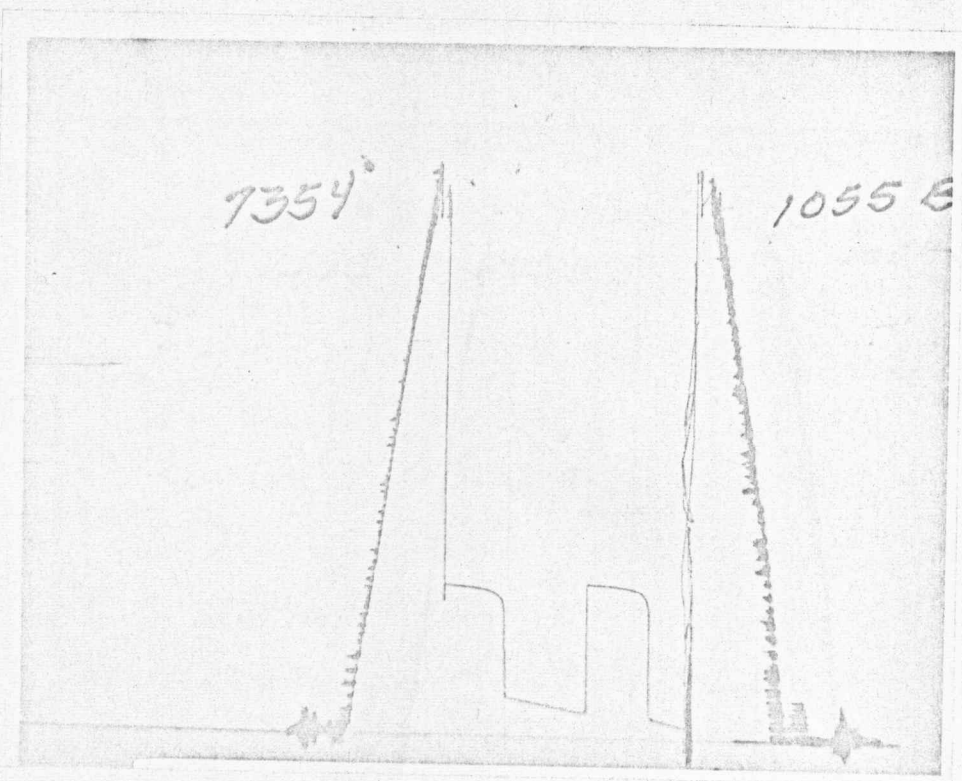
Recorder No. 1620	Clock Range 12 hr	Recorder No. 1055	Clock Range 12 hr
Depth 3674		Depth 3677	
Initial Hydro Mud Press. 2038		Initial Hydro Mud Press. 2053	
Initial Shut-in Press. 538		Initial Shut-in Press. 559	
Initial Flow Press. 15-46		Initial Flow Press. 45-76	
Final Flow Press. 60-115		Final Flow Press. 92-142	
Final Shut-in Press. 527		Final Shut-in Press. 549	
Final Hydro Mud Press. 1978		Final Hydro Mud Press. 2023	
Temperature 106		Tool Open Before I: S. I. 30	Mins.
Mud Weight 10.1	Viscosity 48	Initial Shut-in 45	Mins.
Fluid Loss		Flow Period 60	Mins.
Interval Tested 3654 to 3680		Final Shut-in 45	Mins.
Top Packer Depth 3649		Surface Choke Size 1"	
Bottom Packer Depth 3654		Bottom Choke Size 5/8"	
Total Depth 3680		Main Hole Size 7 7/8	
Drill Pipe Size 4 1/2FH	Wt.	Rubber Size 6 3/4	
Drill Collar I. D.	Ft. Run		
Recovery—Total Feet 200			
Recovered 200	Feet Of MUDDY WATER		
Recovered	Feet Of		
Recovered	Feet Of		
Recovered	Feet Of		

Remarks
 WEAK BLOW THRU-OUT TEST (3" OF WATER)
 all PRESSURES CORRECTED

DRILL STEM TEST NO. 2



TOP RECORDER



BOTTOM RECORDER