

6-13s-33w

ORIGINAL

Computer inventoried

DRILL-STEM TEST DATA

15-109-20589

Well Name:

RUBY DIRKS #4

Company :

JOHN O FARMER INC

Location - Sec:

6

Twp: 13S

Rge: 33W

County:

LOGAN

State: KS

Date:

06/28/95

NW NW SW SE

KCC

MAR 01 1996

TRILOBITE TESTING L.L.C.

OPERATOR : JOHN O FARMER INC

DATE 06/24/95

WELL NAME: RUBY DIRKS #4

KB 3011.00 ft

TICKET NO: 8117

DST #1

LOCATION : 6-13S-33W, LOGAN COUNTY

GR 3006.00 ft

FORMATION: TORONTO

INTERVAL : 3877.00 To 3910.00 ft

TD 3910.00 ft

TEST TYPE: CONVENTIONAL

RECORDER DATA

Mins	Field	1	2	3	4	TIME DATA-----
PF 30 Rec.	AK-1	AK-1	AK-1			PF Fr. 30 to hr
SI 30 Range(Psi)	4500.0	4500.0	4500.0	0.0	0.0	IS Fr. 30 to hr
SF 30 Clock(hrs)	21048	21048	7452			SF Fr. 30 to hr
FS 30 Depth(ft)	3900.0	3900.0	3905.0	0.0	0.0	FS Fr. 30 to hr

	Field	1	2	3	4	
A. Init Hydro	1892.0	1897.0	0.0	0.0	0.0	T STARTED hr
B. First Flow	201.0	206.0	0.0	0.0	0.0	T ON BOTM hr
B1. Final Flow	560.0	556.0	0.0	0.0	0.0	T OPEN 1147 hr
C. In Shut-in	1130.0	1129.0	0.0	0.0	0.0	T PULLED 1347 hr
D. Init Flow	649.0	649.0	0.0	0.0	0.0	T OUT hr
E. Final Flow	816.0	817.0	0.0	0.0	0.0	
F. Fl Shut-in	1130.0	1129.0	0.0	0.0	0.0	TOOL DATA-----
G. Final Hydro	1847.0	1852.0	0.0	0.0	0.0	Tool Wt. 0.00 lbs
Inside/Outside	I	O	O			Wt Set On Packer 0.00 lbs
						Wt Pulled Loose 0.00 lbs
						Initial Str Wt 0.00 lbs
						Unseated Str Wt 0.00 lbs
						Bot Choke 0.75 in
						Hole Size 7.88 in
						D Col. ID 0.00 in
						D. Pipe ID 3.80 in
						D.C. Length 0.00 ft
						D.P. Length 0.00 ft
						H.W. I.D 2.70 in
						H.W. Length 506.00 ft

RECOVERY

Tot Fluid 1610.00 ft of 0.00 ft in DC and 1610.00 ft in DP
 190.00 ft of MUD CUT WATERY OIL - 5% OIL, 47% H2O, 48% MUD
 120.00 ft of MUDDY WATER, TRACE OF OIL - 3% OIL, 82% H2O,
 0.00 ft of 15% MUD
 120.00 ft of WATERY MUD, TRACE OF OIL - 3% OIL, 92% H2O,
 0.00 ft of 5% MUD
 1180.00 ft of SALT WATER, TRACE OF OIL - 100% H2O
 0.00 ft of

RW .2 @ 66 F

SALINITY 37500.00 P.P.M. A.P.I. Gravity 0.00

MUD DATA-----

Mud Type	CHEMICAL
Weight	8.90 lb/cf
Vis.	49.00 S/L
W.L.	11.20 in3
F.C.	0.00 in
Mud Drop	

BLOW DESCRIPTION

INITIAL BLOW -
 BOTTOM OF BUCKET IN 4 MIN, BLEW BOTTOM
 OF BUCKET THROUGHOUT

INITIAL SHUTIN -

bled off blow, NO RETURN BLOW

FINAL BLOW -

BOTTOM OF BUCKET IN 4 MIN, BLEW BOTTOM
 OF BUCKET THROUGHOUT

FINAL SHUTIN -

bled off blow, NO RETURN BLOW

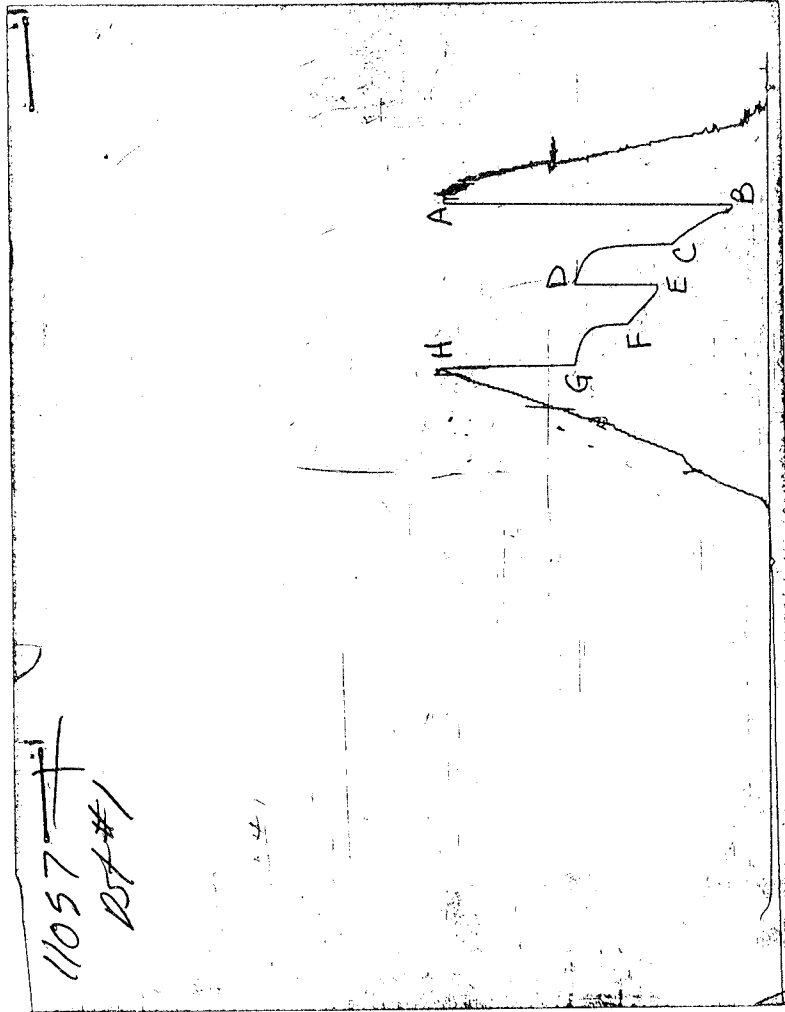
SAMPLES:

SENT TO:

Amt. of fill	0.00 ft
Btm. H. Temp.	114.00 F
Hole Condition	
% Porosity	0.00
Packer Size	6.75 in
No. of Packers	2
Cushion Amt.	0.00
Cushion Type	
Reversed Out	
Tool Chased	
Tester	SHANE MCBRIDE
Co. Rep.	JOHN O FARMER IV
Contr.	ABERCROMBIE
Rig #	8
Unit #	
Pump T.	

Test Successful: Y

CHART PAGE



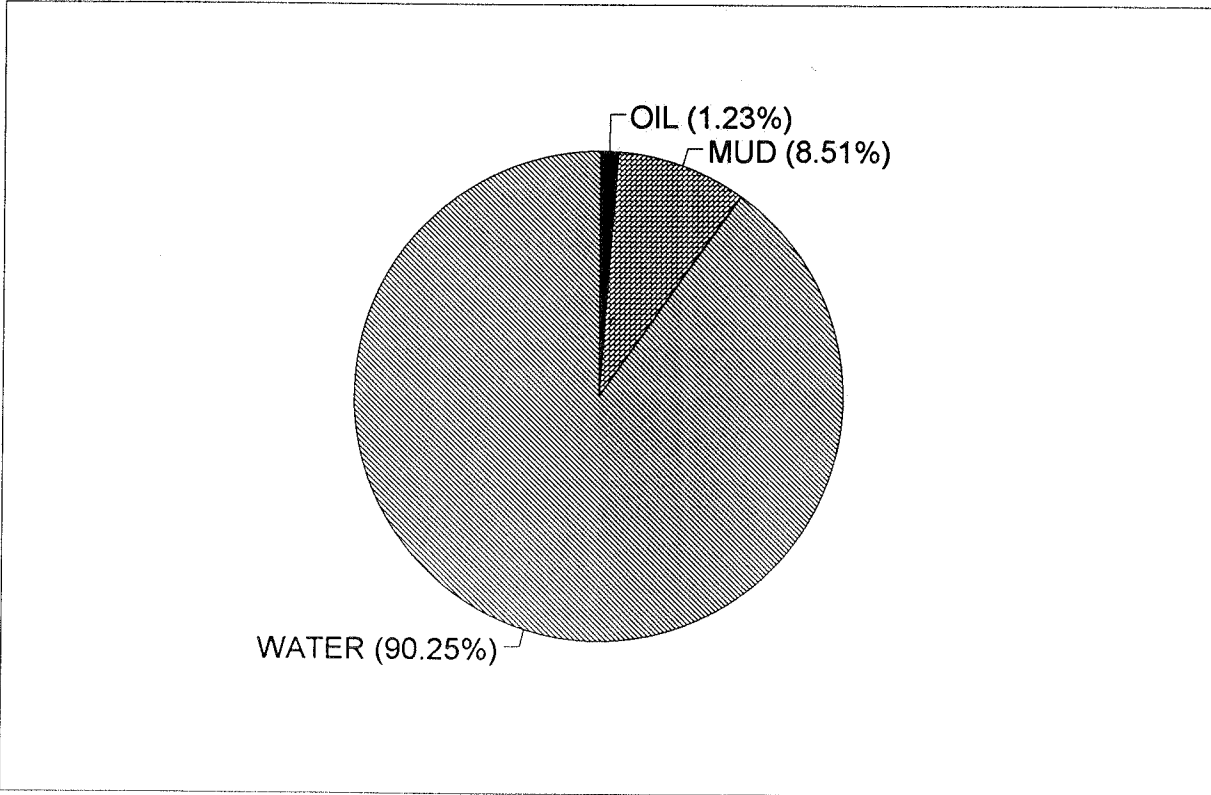
This is an actual photograph of an AK1 recorder chart

CALCULATED RECOVERY ANALYSIS

DST # 1

TICKET # 8117

SAMPLE #	TOTAL FEET	GAS		OIL		WATER		MUD		
		%	FEET	%	FEET	%	FEET	%	FEET	
DRILL PIPE	1	190	0	5	9.5	47	89.3	48	91.2	
	2	120	0	3	3.6	82	98.4	15	18	
	3	120	0	3	3.6	92	110.4	5	6	
	4	674	0		0	100	674		0	
	5		0		0		0		0	
	6		0		0		0		0	
WEIGHT PIPE	1	506	0		0	100	506		0	
	2		0		0		0		0	
	3		0		0		0		0	
	4		0		0		0		0	
DRL COLLAR	1		0		0		0		0	
	2		0		0		0		0	
	3		0		0		0		0	
	4		0		0		0		0	
	5		0		0		0		0	
TOTAL		1610	0	0	1.037267	16.7	91.80745	1478.1	7.15528	115.2
HRS OPE BBL/DAY										
BBL OIL=	0.237474	*	1.00	5.699376						
BBL WATER=	17.36526	*		416.7663						
BBL MUD=	1.638144									
BBL GAS =	0									



TRILOBITE TESTING L.L.C.

OPERATOR : JOHN O FARMER INC

DATE 06/25/95

WELL NAME: RUBY DIRKS #4

KB 3011.00 ft

TICKET NO: 8118

DST #2

LOCATION : 6-13S-33W, LOGAN COUNTY

GR 3006.00 ft

FORMATION: LANSING "A"

INTERVAL : 3917.00 To 3942.00 ft

TD 3942.00 ft

TEST TYPE: CONVENTIONAL

RECORDER DATA

Mins	Field	1	2	3	4	TIME DATA-----
PF 45 Rec.	AK-1	AK-1	AK-1			PF Fr. 45 to hr
SI 45 Range(Psi)	4500.0	4500.0	4500.0	0.0	0.0	IS Fr. 45 to hr
SF 45 Clock(hrs)	21048	21048	7452			SF Fr. 45 to hr
FS 60 Depth(ft)	3939.0	3939.0	3918.0	0.0	0.0	FS Fr. to 1 hr

	Field	1	2	3	4	
A. Init Hydro	1914.0	1909.0	0.0	0.0	0.0	T STARTED hr
B. First Flow	33.0	27.0	0.0	0.0	0.0	T ON BOTM hr
B1. Final Flow	33.0	27.0	0.0	0.0	0.0	T OPEN 0147 hr
C. In Shut-in	1163.0	1157.0	0.0	0.0	0.0	T PULLED 0502 hr
D. Init Flow	44.0	43.0	0.0	0.0	0.0	T OUT hr
E. Final Flow	44.0	43.0	0.0	0.0	0.0	
F. Fl Shut-in	1169.0	1155.0	0.0	0.0	0.0	TOOL DATA-----
G. Final Hydro	1881.0	1843.0	0.0	0.0	0.0	Tool Wt. 0.00 lbs
Inside/Outside	0	0	I			Wt Set On Packer 0.00 lbs
						Wt Pulled Loose 0.00 lbs
						Initial Str Wt 0.00 lbs
						Unseated Str Wt 0.00 lbs
						Bot Choke 0.75 in
						Hole Size 7.88 in
						D Col. ID 0.00 in
						D. Pipe ID 3.80 in
						D.C. Length 0.00 ft
						D.P. Length 0.00 ft
						H.W. I.D 2.70 in
						H.W. Length 506.00 ft

RECOVERY

Tot Fluid 61.00 ft of 0.00 ft in DC and 61.00 ft in DP
 1.00 ft of FREE OIL - 100% OIL
 60.00 ft of MUDDY WATER - 35% WATER, 65% MUD
 0.00 ft of
 0.00 ft of
 0.00 ft of
 0.00 ft of
 0.00 ft of

RW .52 @ 53 F

SALINITY 19000.00 P.P.M. A.P.I. Gravity 0.00

BLOW DESCRIPTION

INITIAL BLOW -
 SURFACE BLOW BUILT TO 1"

INITIAL SHUTIN -
 BLED OFF BLOW, NO BLOW

FINAL BLOW -
 SURFACE BLOW TO OPEN TOOL, BLOW DIED,
 BLOW RETURNED 35 MIN INTO OPEN - VERY
 WEAK SURFACE BLOW

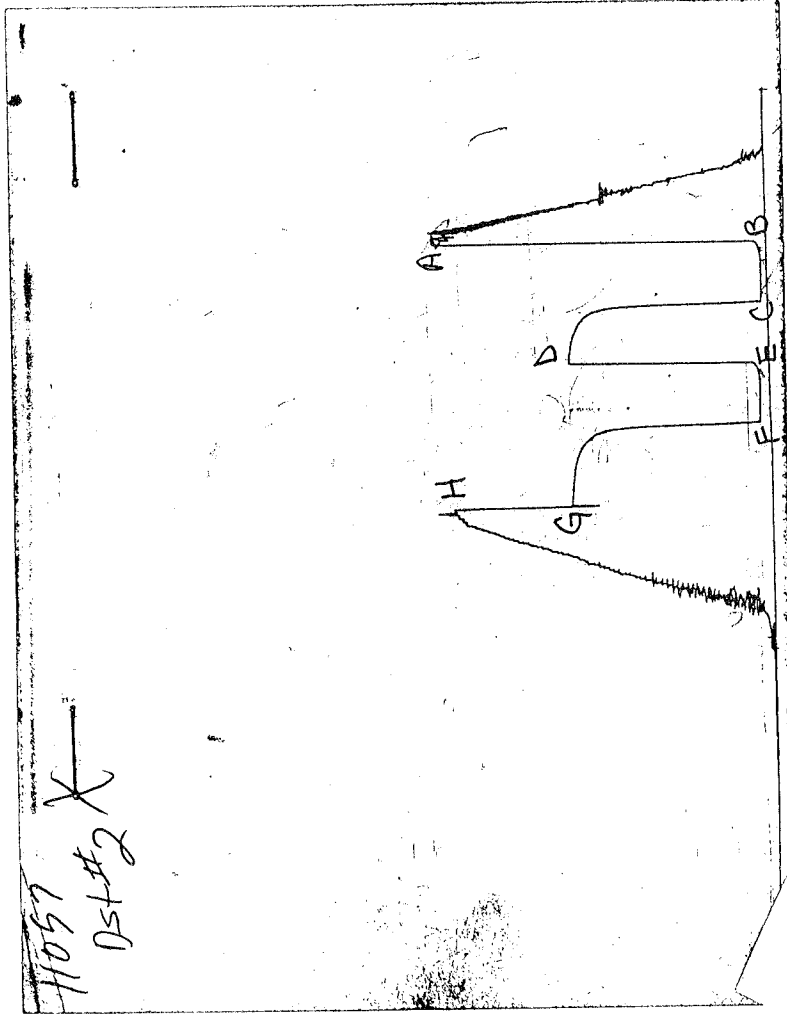
FINAL SHUTIN -
 BLED OFF BLOW, NO RETURN BLOW

SAMPLES:
 SENT TO:

MUD DATA-----	CHEMICAL
Mud Type	
Weight	9.30 lb/c
Vis.	50.00 S/L
W.L.	8.80 in3
F.C.	0.00 in
Mud Drop	
Amt. of fill	0.00 ft
Btm. H. Temp.	114.00 F
Hole Condition	
% Porosity	0.00
Packer Size	6.75 in
No. of Packers	2
Cushion Amt.	0.00
Cushion Type	
Reversed Out	
Tool Chased	
Tester	SHANE MCBRIDE
Co. Rep.	JOHN O FARMER IV
Contr.	ABERCROMBIE
Rig #	8
Unit #	
Pump T.	

Test Successful: Y

CHART PAGE



This is an actual photograph of an AK1 recorder chart

CALCULATED RECOVERY ANALYSIS WEIGHT PIPE

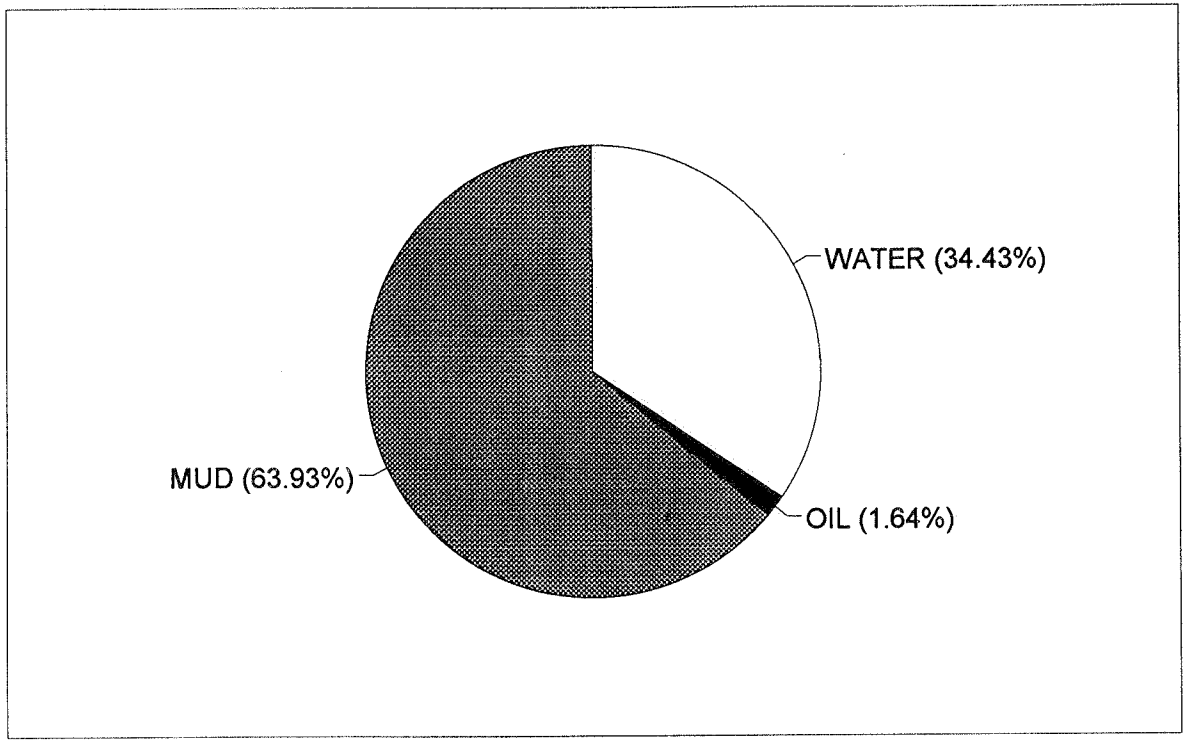
DST # 2

TICKET # 8118

SAMPLE #	TOTAL FEET	GAS		OIL		WATER		MUD	
		%	FEET	%	FEET	%	FEET	%	FEET
1	1		0	100	1		0		0
2	60		0		0	35	21	65	39
3			0		0		0		0
4			0		0		0		0
5			0		0		0		0
TOTAL	61	0	0	1.639344	1	34.42623	21	63.93443	39

HRS OPE BBL/DAY

BBL OIL=	0.007	*	1.50	0.112
BBL WAT	0.147	*		2.352
BBL MUD	0.273			
BBL GAS	0			



TRILOBITE TESTING L.L.C.

OPERATOR : JOHN O FARMER INC

DATE 06/25/95

WELL NAME: RUBY DIRKS #4

KB 3011.00 ft

TICKET NO: 8119

DST #3

LOCATION : 6-13S-33W, LOGAN COUNTY

GR 3006.00 ft

FORMATION: LANSING "B"

INTERVAL : 3945.00 To 3975.00 ft

TD 3975.00 ft

TEST TYPE: CONVENTIONAL

RECORDER DATA

Mins		Field	1	2	3	4	TIME DATA-----
PF 45	Rec.	AK-1	AK-1	AK-1			PF Fr. 45 to hr
SI 45	Range(Psi)	4500.0	4500.0	4500.0	0.0	0.0	IS Fr. 45 to hr
SF 60	Clock(hrs)	21048	21048	7452			SF Fr. to 1 hr
FS 60	Depth(ft)	3966.0	3966.0	3970.0	0.0	0.0	FS Fr. to 1 hr

	Field	1	2	3	4	
A. Init Hydro	1959.0	1960.0	0.0	0.0	0.0	T STARTED hr
B. First Flow	56.0	64.0	0.0	0.0	0.0	T ON BOTM hr
B1. Final Flow	145.0	149.0	0.0	0.0	0.0	T OPEN 1503 hr
C. In Shut-in	1174.0	1184.0	0.0	0.0	0.0	T PULLED 1833 hr
D. Init Flow	179.0	196.0	0.0	0.0	0.0	T OUT hr
E. Final Flow	269.0	286.0	0.0	0.0	0.0	
F. Fl Shut-in	1152.0	1161.0	0.0	0.0	0.0	TOOL DATA-----
G. Final Hydro	1914.0	1932.0	0.0	0.0	0.0	Tool Wt. 0.00 lbs
Inside/Outside	I	I	O			Wt Set On Packer 0.00 lbs
						Wt Pulled Loose 0.00 lbs
						Initial Str Wt 0.00 lbs
						Unseated Str Wt 0.00 lbs
						Bot Choke 0.75 in
						Hole Size 7.88 in
						D Col. ID 0.00 in
						D. Pipe ID 3.80 in
						D.C. Length 0.00 ft
						D.P. Length 0.00 ft
						H.W. I.D 2.70 in
						H.W. Length 506.00 ft

RECOVERY

Tot Fluid 650.00 ft of 0.00 ft in DC and 650.00 ft in DP
 150.00 ft of WATERY MUD - 50% WATER, 50% MUD
 250.00 ft of MUDDY WATER - 90% WATER, 10% MUD
 250.00 ft of SALT WATER W/ TRACE OF MUD - 100% WATER
 0.00 ft of
 0.00 ft of
 0.00 ft of
 0.00 ft of

RW .14 @ 80 F

SALINITY 55000.00 P.P.M. A.P.I. Gravity 0.00

BLOW DESCRIPTION

INITIAL BLOW -
 SURFACE BLOW BUILT TO BOTTOM OF BUCKET
 IN 41 MIN

INITIAL SHUTIN -
 BLED OFF BLOW, NO RETURN BLOW

FINAL BLOW -
 SURFACE BLOW BUILT TO BOTTOM OF BUCKET
 IN 42 MIN

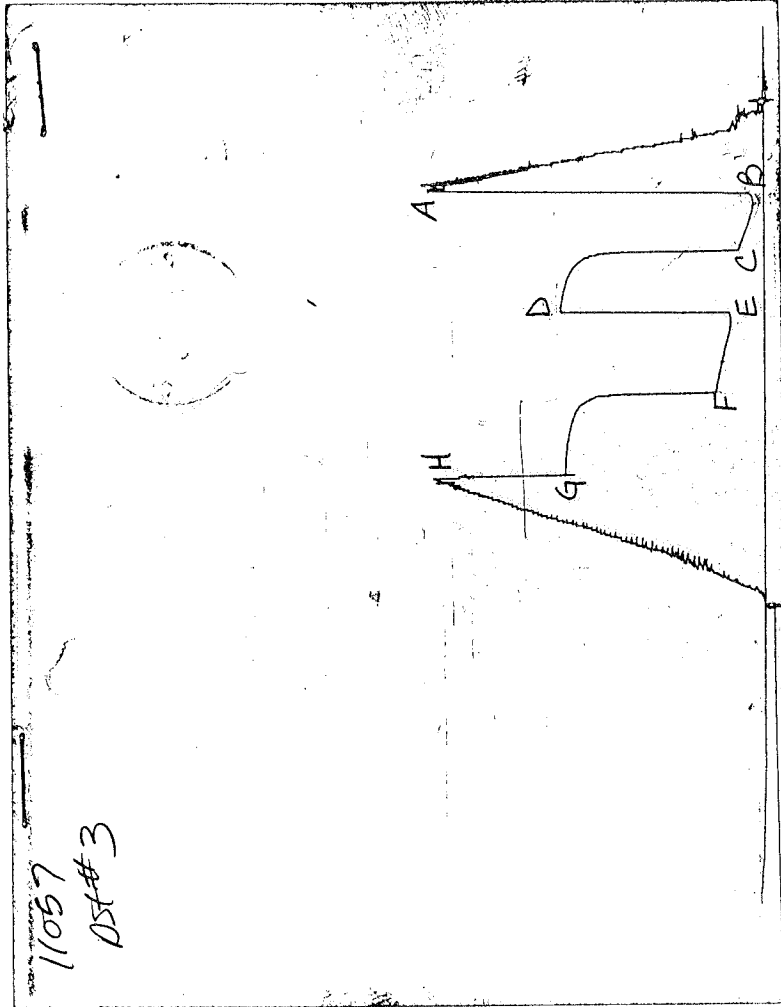
FINAL SHUTIN -
 NO RETURN BLOW

SAMPLES:
 SENT TO:

MUD DATA-----	CHEMICAL
Mud Type	
Weight	9.30 lb/c
Vis.	53.00 S/L
W.L.	8.40 in3
F.C.	0.00 in
Mud Drop	
Amt. of fill	0.00 ft
Btm. H. Temp.	116.00 F
Hole Condition	
% Porosity	0.00
Packer Size	6.75 in
No. of Packers	2
Cushion Amt.	0.00
Cushion Type	
Reversed Out	
Tool Chased	
Tester	SHANE MCBRIDE
Co. Rep.	JOHN O FARMER IV
Contr.	ABERCROMBIE
Rig #	8
Unit #	
Pump T.	

Test Successful: Y

CHART PAGE



This is an actual photograph of an AK1 recorder chart

TRILOBITE TESTING L.L.C.

OPERATOR : JOHN O FARMER INC
 WELL NAME: RUBY DIRKS #4
 LOCATION : 6-13S-33W, LOGAN COUNTY
 INTERVAL : 3974.00 To 4014.00 ft

DATE 06/26/95
 KB 3011.00 ft
 GR 3006.00 ft
 TD 4014.00 ft

TICKET NO: 8120
 FORMATION: LANSING D & E
 TEST TYPE: CONVENTIONAL

DST #4

RECORDER DATA

Mins	Field	1	2	3	4	TIME DATA-----
PF 30	Rec.	AK-1	AK-1	AK-1		PF Fr. 30 to hr
SI 30	Range(Psi)	4500.0	4500.0	4500.0	0.0	0.0 IS Fr. 30 to hr
SF 30	Clock(hrs)	21048	21048	7452		SF Fr. 30 to hr
FS 30	Depth(ft)	4005.0	4005.0	4009.0	0.0	0.0 FS Fr. 30 to hr

	Field	1	2	3	4	
A. Init Hydro	1970.0	1970.0	0.0	0.0	0.0	T STARTED hr
B. First Flow	22.0	34.0	0.0	0.0	0.0	T ON BOTM hr
B1. Final Flow	22.0	34.0	0.0	0.0	0.0	T OPEN 0601 hr
C. In Shut-in	526.0	527.0	0.0	0.0	0.0	T PULLED 0801 hr
D. Init Flow	22.0	35.0	0.0	0.0	0.0	T OUT hr
E. Final Flow	22.0	35.0	0.0	0.0	0.0	
F. Fl Shut-in	280.0	286.0	0.0	0.0	0.0	TOOL DATA-----
G. Final Hydro	1948.0	1950.0	0.0	0.0	0.0	Tool Wt. 0.00 lbs
Inside/Outside	I	I	O			Wt Set On Packer 0.00 lbs
						Wt Pulled Loose 0.00 lbs
						Initial Str Wt 0.00 lbs
						Unseated Str Wt 0.00 lbs
						Bot Choke 0.75 in
						Hole Size 7.88 in
						D Col. ID 0.00 in
						D. Pipe ID 3.80 in
						D.C. Length 0.00 ft
						D.P. Length 0.00 ft
						H.W. I.D 2.70 in
						H.W. Length 506.00 ft

RECOVERY

Tot Fluid 17.00 ft of 0.00 ft in DC and 17.00 ft in DP
 2.00 ft of FREE OIL - 100% OIL
 5.00 ft of MUD CUT OIL - 85% OIL, 15% MUD
 10.00 ft of OIL CUT MUD - 20% OIL, 80% MUD
 0.00 ft of
 0.00 ft of
 0.00 ft of
 0.00 ft of

RW .98 @ 70 F

SALINITY 6150.00 P.P.M. A.P.I. Gravity 0.00

BLOW DESCRIPTION

INITIAL BLOW -
 SURFACE BLOW BUILT TO 1/2"

INITIAL SHUTIN -

NO RETURN BLOW

FINAL BLOW -

BUBBLE TO OPEN TOOL, NO BLOW

FINAL SHUTIN -

NO RETURN BLOW

SAMPLES:

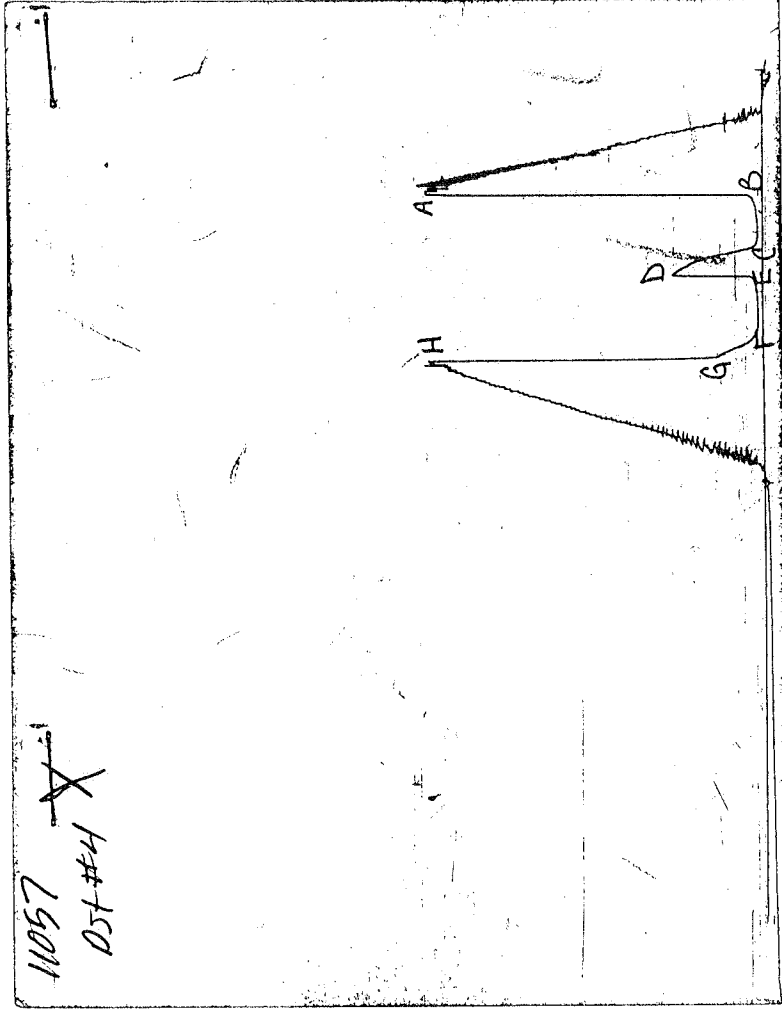
SENT TO:

MUD DATA-----

Mud Type	CHEMICAL
Weight	9.30 lb/c
Vis.	53.00 S/L
W.L.	8.40 in3
F.C.	0.00 in
Mud Drop	
Amt. of fill	0.00 ft
Btm. H. Temp.	114.00 F
Hole Condition	
% Porosity	0.00
Packer Size	6.75 in
No. of Packers	2
Cushion Amt.	0.00
Cushion Type	
Reversed Out	
Tool Chased	
Tester	SHANE MCBRIDE
Co. Rep.	JOHN O FARMER IV
Contr.	ABERCROMBIE
Rig #	8
Unit #	
Pump T.	

Test Successful: Y

CHART PAGE



This is an actual photograph of an AK1 recorder chart

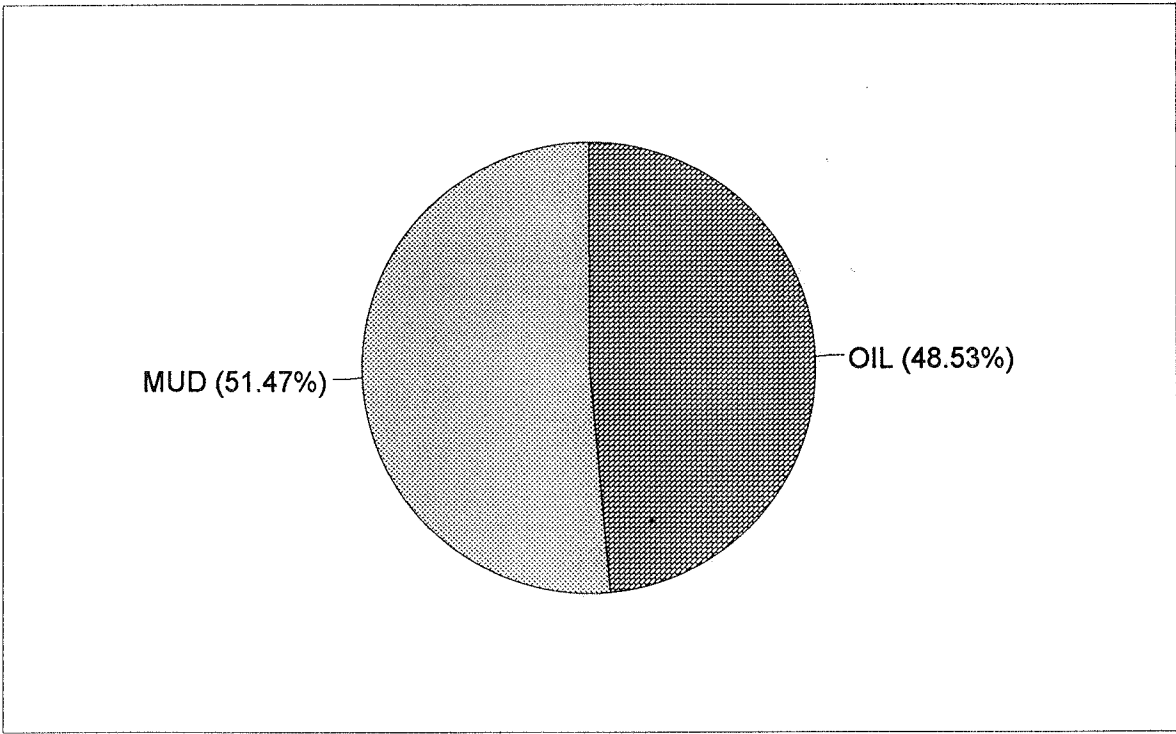
CALCULATED RECOVERY ANALYSIS WEIGHT PIPE

DST # 4

TICKET # 8120

SAMPLE #	TOTAL FEET	GAS		OIL		WATER		MUD	
		%	FEET	%	FEET	%	FEET	%	FEET
1	2		0	100	2		0		0
2	5		0	85	4.25		0	15	0.75
3	10		0	20	2		0	80	8
4			0		0		0		0
5			0		0		0		0
TOTAL	17	0	0	48.52941	8.25	0	0	51.47059	8.75

			HRS OPE BBL/DAY	
BBL OIL=	0.05775	*	1.00	1.386
BBL WAT	0	*		0
BBL MUD	0.06125			
BBL GAS	0			



TRILOBITE TESTING L.L.C.

OPERATOR : JOHN O FARMER INC

DATE 06/27/95

WELL NAME: RUBY DIRKS #4

KB 3011.00 ft

TICKET NO: 8121

DST #5

LOCATION : 6-13S-33W, LOGAN COUNTY

GR 3006.00 ft

FORMATION: LANSING H, I, J

INTERVAL : 4078.00 To 4179.00 ft

TD 4179.00 ft

TEST TYPE: CONVENTIONAL

RECORDER DATA

Mins		Field	1	2	3	4	TIME DATA-----
PF 30	Rec.	AK-1	AK-1	AK-1			PF Fr. 30 to hr
SI 30	Range(Psi)	4500.0	4500.0	4500.0	0.0	0.0	IS Fr. 30 to hr
SF 30	Clock(hrs)	21048	21048	7452			SF Fr. 30 to hr
FS 30	Depth(ft)	4079.0	4079.0	4176.0	0.0	0.0	FS Fr. 30 to hr

	Field	1	2	3	4	
A. Init Hydro	2015.0	2014.0	0.0	0.0	0.0	T STARTED hr
B. First Flow	11.0	14.0	0.0	0.0	0.0	T ON BOTM hr
B1. Final Flow	11.0	14.0	0.0	0.0	0.0	T OPEN 0303 hr
C. In Shut-in	1107.0	1108.0	0.0	0.0	0.0	T PULLED 0503 hr
D. Init Flow	22.0	36.0	0.0	0.0	0.0	T OUT hr
E. Final Flow	22.0	36.0	0.0	0.0	0.0	
F. Fl Shut-in	1040.0	1053.0	0.0	0.0	0.0	TOOL DATA-----
G. Final Hydro	1993.0	2009.0	0.0	0.0	0.0	Tool Wt. 0.00 lbs
Inside/Outside	I	I	O			Wt Set On Packer 0.00 lbs

RECOVERY

Tot Fluid 70.00 ft of 0.00 ft in DC and 70.00 ft in DP
 70.00 ft of WATERY MUD - 32% WATER, 68% MUD
 0.00 ft of
 0.00 ft of
 0.00 ft of
 0.00 ft of
 0.00 ft of
 0.00 ft of

Unseated Str Wt 0.00 lbs
 Bot Choke 0.75 in
 Hole Size 7.88 in
 D Col. ID 0.00 in
 D. Pipe ID 3.80 in
 D.C. Length 0.00 ft
 D.P. Length 0.00 ft
 H.W. I.D 2.70 in
 H.W. Length 506.00 ft

RW .29 @ 70 F

SALINITY 24000.00 P.P.M. A.P.I. Gravity 0.00

MUD DATA-----

BLOW DESCRIPTION

INITIAL BLOW -
 SURFACE BLOW BUILT TO 3/4"

INITIAL SHUTIN -
 NO RETURN BLOW

FINAL BLOW -
 BUBBLE TO OPEN TOOL, NO BLOW, BLOW IN
 15 MIN BUILT TO 1/4"

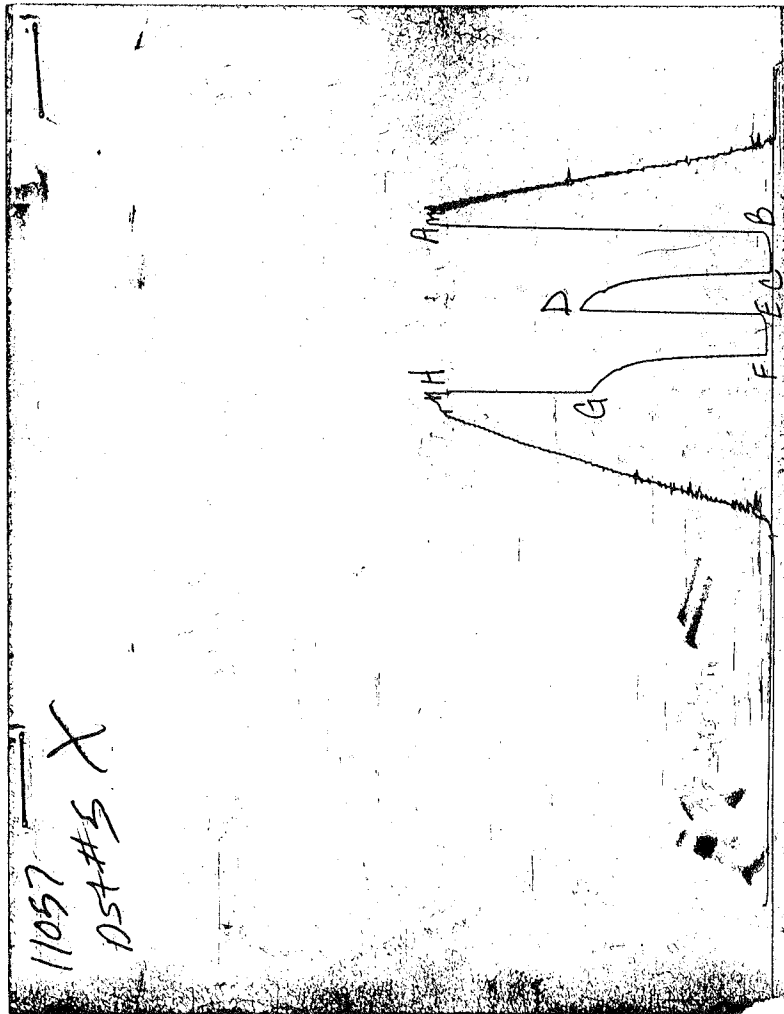
FINAL SHUTIN -
 NO RETURN BLOW

SAMPLES:
 SENT TO:

Mud Type CHEMICAL
 Weight 9.10 lb/c
 Vis. 48.00 S/L
 W.L. 8.80 in3
 F.C. 0.00 in
 Mud Drop
 Amt. of fill 0.00 ft
 Btm. H. Temp. 115.00 F
 Hole Condition
 % Porosity 0.00
 Packer Size 6.75 in
 No. of Packers 2
 Cushion Amt. 0.00
 Cushion Type
 Reversed Out
 Tool Chased
 Tester SHANE MCBRIDE
 Co. Rep. JOHN O FARMER IV
 Contr. ABERCROMBIE
 Rig # 8
 Unit #
 Pump T.

Test Successful: Y

CHART PAGE



This is an actual photograph of an AK1 recorder chart

TRILOBITE TESTING L.L.C.

OPERATOR : JOHN O FARMER INC DATE 06/28/95
 WELL NAME: RUBY DIRKS #4 KB 3011.00 ft TICKET NO: 8122 DST #6
 LOCATION : 6-13S-33W, LOGAN COUNTY GR 3006.00 ft FORMATION: JOHNSON
 INTERVAL : 4476.00 To 4520.00 ft TD 4520.00 ft TEST TYPE: CONVENTIONAL

RECORDER DATA

Mins	Field	1	2	3	4	TIME DATA-----
PF 45 Rec.	AK-1	AK-1	AK-1			PF Fr. 45 to hr
SI 45 Range(Psi)	4500.0	4500.0	4500.0	0.0	0.0	IS Fr. 45 to hr
SF 45 Clock(hrs)	21048	21048	7452			SF Fr. 45 to hr
FS 45 Depth(ft)	4477.0	4477.0	4517.0	0.0	0.0	FS Fr. 45 to hr

	Field	1	2	3	4	
A. Init Hydro	2298.0	2296.0	0.0	0.0	0.0	T STARTED hr
B. First Flow	56.0	61.0	0.0	0.0	0.0	T ON BOTM hr
Bl. Final Flow	78.0	80.0	0.0	0.0	0.0	T OPEN 0855 hr
C. In Shut-in	257.0	257.0	0.0	0.0	0.0	T PULLED 1155 hr
D. Init Flow	112.0	108.0	0.0	0.0	0.0	T OUT hr
E. Final Flow	123.0	121.0	0.0	0.0	0.0	
F. Fl Shut-in	257.0	258.0	0.0	0.0	0.0	TOOL DATA-----
G. Final Hydro	2276.0	2266.0	0.0	0.0	0.0	Tool Wt. 0.00 lbs
Inside/Outside	I	I	O			Wt Set On Packer 0.00 lbs
						Wt Pulled Loose 0.00 lbs
						Initial Str Wt 0.00 lbs
						Unseated Str Wt 0.00 lbs
						Bot Choke 0.75 in
						Hole Size 7.88 in
						D Col. ID 0.00 in
						D. Pipe ID 3.80 in
						D.C. Length 0.00 ft
						D.P. Length 0.00 ft
						H.W. I.D 2.70 in
						H.W. Length 506.00 ft

RECOVERY

Tot Fluid 313.00 ft of 0.00 ft in DC and 313.00 ft in DP
 2448.00 ft of GAS IN PIPE
 3.00 ft of FREE OIL - 100% OIL
 10.00 ft of CLEAN GASSY OIL - 30% GAS, 70% OIL
 300.00 ft of SLIGHTLY GASSY HEAVY OIL CUT MUD - 8% GAS,
 0.00 ft of 35% OIL, 57% MUD
 0.00 ft of
 0.00 ft of
 0.00 ft of

RW .99 @ 70 F

SALINITY 6150.00 P.P.M. A.P.I. Gravity 31.00

BLOW DESCRIPTION

INITIAL BLOW -
 BOTTOM OF BUCKET IN 6 MIN

INITIAL SHUTIN -
 BLED OFF BLOW, NO RETURN BLOW

FINAL BLOW -
 BOTTOM OF BUCKET IN 3 MIN

FINAL SHUTIN -
 BLED OFF BLOW, RETURN BLOW IN 10 MIN,
 BLOW DIED 10 MIN

SAMPLES:
 SENT TO:

MUD DATA-----

Mud Type	CHEMICAL
Weight	9.20 lb/c
Vis.	47.00 S/L
W.L.	10.40 in3
F.C.	0.00 in
Mud Drop	
Amt. of fill	0.00 ft
Btm. H. Temp.	123.00 F
Hole Condition	
% Porosity	0.00
Packer Size	6.75 in
No. of Packers	2
Cushion Amt.	0.00
Cushion Type	
Reversed Out	
Tool Chased	
Tester	SHANE MCBRIDE
Co. Rep.	JOHN O FARMER IV
Contr.	ABERCROMBIE
Rig #	8
Unit #	
Pump T.	

Test Successful: Y

COMPUTER OIL EVALUATION BY TRILOBITE TESTING, L.L.C.

JOHN O FARMER INC

RUBY DIRKS #4

DST 6

6 13S 33W

LOGAN KS

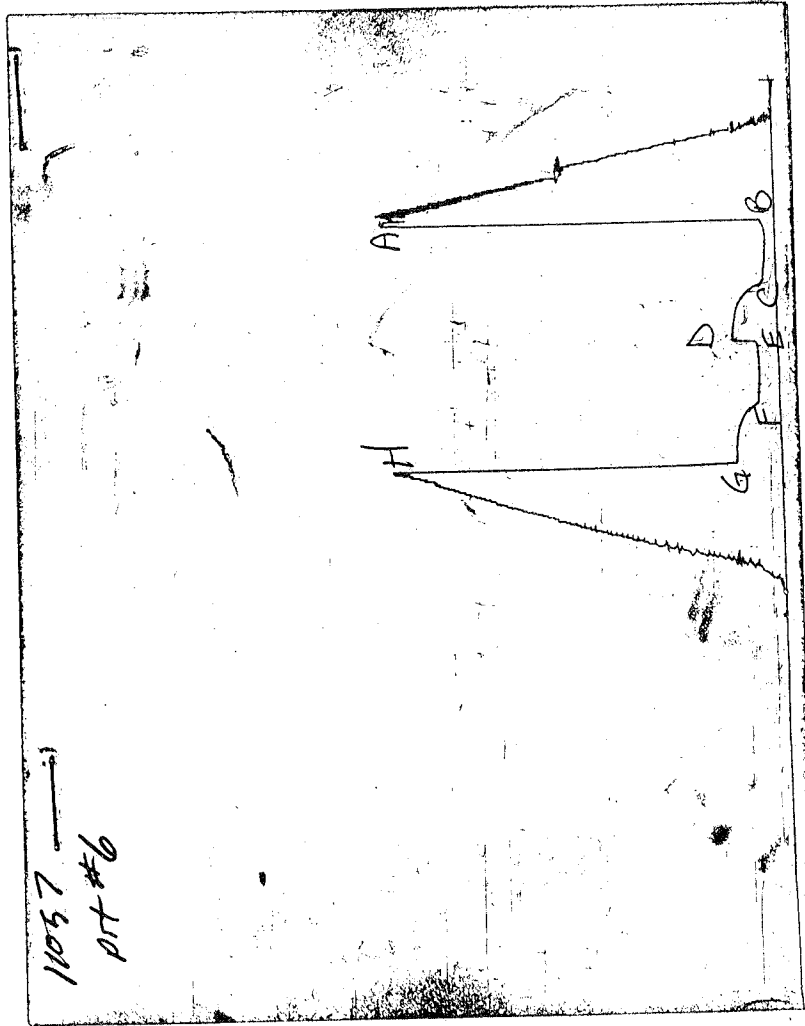
ELEVATION: 3006 KB EST. PAY 3 FT
DATUM: -1472 ZONE TESTED: JOHNSON
TEST INTERVAL: 4476-4520 TIME INTERVALS: 45-45-45-45
RECORDER DEPTH: 4477 VISCOSITY: 7.78 CP
BOTTOM HOLE TEMP: 123 HOLE SIZE: 7.875 IN

CUBIC FEET OF GAS IN PIPE: 188
TOTAL FEET OF RECOVERY: 313.00 CORRECTED PIPE FILLUP: 326.260
TOTAL BARRELS OF RECOVERY: 2.19 CORR. BARRELS OF RECOVERY: 2.191 BBL
BARRELS IN DRILL PIPE: 0.00 API GRAVITY: 31
BARRELS IN WEIGHT PIPE: 2.19 FLUID GRADIENT: 0.377
BARRELS IN DRILL COLLARS: 0.00
GAS OIL RATIO: 85.61 CU.FT/BBL
BUBBLE POINT PRESSURE: 293
UNCORRECTED INITIAL PRODUCTION: 35.06 BBL
INITIAL PRODUCTION CORRECTED TO FINAL FLOW PRESSURE: 35.06 BBL/DAY
INITIAL PRODUCTION CORRECTED TO PSEUDO STEADY FLOW STATE: 13.988

INITIAL SLOPE 171.41 PSI/CYCLE FINAL SLOPE 77.11 PSI/CYCLE
INITIAL P* 294.76 PSI FINAL P* 293.22 PSI

TRANSMISSIBILITY 73.92 (MD.-FT./CP.)
PERMEABILITY 191.66 (MD.)
INDICATED FLOW CAPACITY 574.98 (MD.FT)
PRODUCTIVITY INDEX 0.08 (BBL/DAY/PSI)
DAMAGE RATIO 0.40
RADIUS OF INVESTIGATION 131.34 (FT.)
POTENTIOMETRIC SURFACE -791.03 (FT.)
DRAWDOWN FACTOR 0.522 (%)

CHART PAGE



This is an actual photograph of an AK1 recorder chart

INITIAL FLOW

DST # 6
RECORDER 11057

		<>
<u>TIME(MIN)</u>	<u>PRESSURE</u>	<u>PRESSURE</u>
0	60.5	60.5
3	60.5	0.0
6	60.5	0.0
9	60.5	0.0
12	60.5	0.0
15	60.5	0.0
18	60.5	0.0
21	60.5	0.0
24	62.8	2.2
27	65.0	2.2
30	67.3	2.2
33	69.5	2.2
36	74.0	4.5
39	74.0	0.0
42	78.5	4.5
45	79.6	1.1

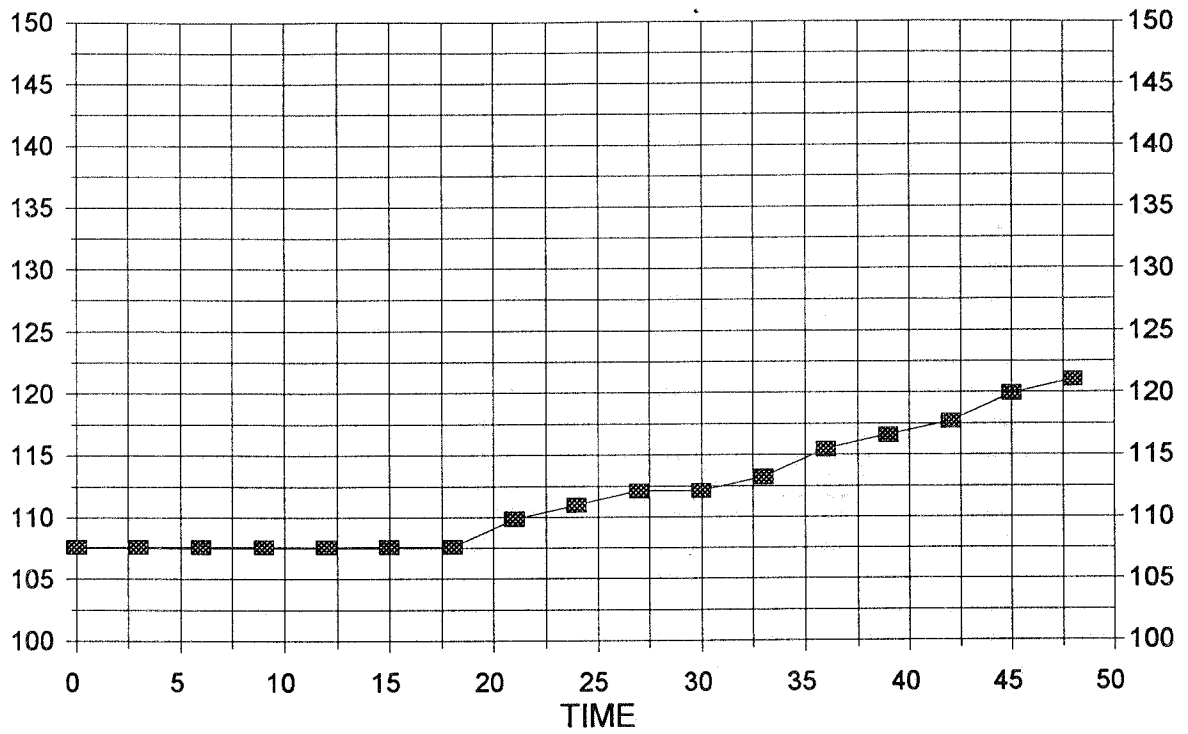
FINAL FLOW

DST # 6
RECORDER 11057

		<>
<u>TIME(MIN)</u>	<u>PRESSURE</u>	<u>PRESSURE</u>
0	107.6	107.6
3	107.6	0.0
6	107.6	0.0
9	107.6	0.0
12	107.6	0.0
15	107.6	0.0
18	107.6	0.0
21	109.9	2.2
24	111.0	1.1
27	112.1	1.1
30	112.1	0.0
33	113.2	1.1
36	115.5	2.2
39	116.6	1.1
42	117.7	1.1
45	120.0	2.2
48	121.1	1.1

DELTA T DELTA P

FINAL FLOW / DST #6



INITIAL PRODUCTION CORRECTED TO PSEUDO STEADY FLOW STATE: 13.98757

INITIAL SHUT-IN

RUBY DIRKS #4

DST # 6

INITIAL FLOW TIME 45

SLOPE

171.4

PSI/CYCLE

P*

294.76

PSI

	<u>TIME(MIN)</u>	<u>Pws (psi)</u>	<u>Log Horn T</u>	<u><> PRESSURE</u>	<u>Horn T</u>
	3	87.4	1.041	87.4	16
	6	103.1	0.778	15.7	9
	9	153.6	0.637	50.4	6
	12	179.4	0.544	25.8	5
	15	199.6	0.477	20.2	4
	18	210.8	0.426	11.2	4
Q	21	228.7	0.385	17.9	3
	24	235.4	0.352	6.7	3
	27	241.0	0.325	5.6	3
	30	246.6	0.301	5.6	3
	33	248.9	0.281	2.2	2
	36	252.2	0.263	3.4	2
	39	254.5	0.248	2.2	2
	42	255.6	0.234	1.1	2
X	45	256.7	0.222	1.1	2

FINAL SHUT-IN

RUBY DIRKS #4

DST # 6

TOTAL FLOW TIME 90

SLOPE

77.1

PSI/CYCLE

P*

293.22

PSI

	<u>TIME(MIN)</u>	<u>Pws (psi)</u>	<u>Log Horn T</u>	<u><> PRESSURE</u>	<u>Horn T</u>
	3	127.8	1.491	127.8	31
	6	155.8	1.204	28.0	16
	9	181.6	1.041	25.8	11
	12	201.8	0.929	20.2	9
	15	216.4	0.845	14.6	7
	18	227.6	0.778	11.2	6
	21	233.2	0.723	5.6	5
Q	24	241.0	0.677	7.8	5
	27	245.5	0.637	4.5	4
	30	248.9	0.602	3.4	4
	33	250.0	0.571	1.1	4
	36	251.1	0.544	1.1	4
	39	253.4	0.520	2.2	3
	42	253.4	0.497	0.0	3
	45	255.6	0.477	2.2	3
X	48	257.9	0.459	2.2	3

CALCULATED RECOVERY ANALYSIS WEIGHT PIPE

DST # 6

TICKET # 8122

SAMPLE #	TOTAL FEET	GAS		OIL		WATER		MUD	
		%	FEET	%	FEET	%	FEET	%	FEET
1	3		0	100	3		0		0
2	10	30	3	70	7		0		0
3	300	8	24	35	105		0	57	171
4			0		0		0		0
5			0		0		0		0
TOTAL	313	8.626198	27	36.74121	115	0	0	54.63259	171

HRS OPE BBL/DAY

BBL OIL=	0.805	*	1.50	12.88
BBL WATER	0	*		0
BBL MUD=	1.197			
BBL GAS=	0.189			

