

15-107-2-0150

State Geological Survey
WICHITA BRANCH
KANSAS DRILLERS LOG

IMPORTANT
Kans. Geo. Survey request
samples on this well.

S. 2 T. 13 R. 33 E W

Loc. C NE NE

County Logan

API No. 15 — 109 — 20,132
County Number

Operator

Beren Corp.

Address

970 Fourth Fin Ctr Wichita, Kansas 67202

Well No.

#1

Lease Name

Voth

Footage Location

feet from (N) (S) line

feet from (E) (W) line

Principal Contractor

Abercrombie Drilling, Inc.

Geologist

Robert Lewellyn

Spud Date

June 30, 1979

Total Depth

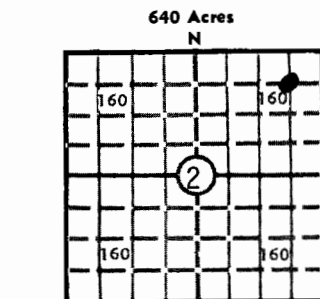
4750

P.B.T.D.

Date Completed

July 11, 1979

Oil Purchaser



Locate well correctly

Elev.: Gr. 3049

DF KB 3054

CASING RECORD

Report of all strings set — surface, intermediate, production, etc.

Purpose of string	Size hole drilled	Size casing set (in O.D.)	Weight lbs/ft.	Setting depth	Type cement	Sacks	Type and percent additives
Surface	12 1/4"	8-5/8"	24#	371'	60-40 pozmix	250	2% gel, 3% C.C.

LINER RECORD

PERFORATION RECORD

Top, ft.	Bottom, ft.	Sacks cement	Shots per ft.	Size & type	Depth interval

Size	Setting depth	Packer set at			

ACID, FRACTURE, SHOT, CEMENT SQUEEZE RECORD

Amount and kind of material used	Depth interval treated

INITIAL PRODUCTION

Date of first production	Producing method (flowing, pumping, gas lift, etc.)				
RATE OF PRODUCTION PER 24 HOURS	Oil	Gas	Water	Gas-oil ratio	
	bbls.	MCF	bbls.	CFPB	
Disposition of gas (vented, used on lease or sold)			Producing interval (s)		

INSTRUCTIONS: As provided in KCC Rule 82-2-125, within 90 days after completion of a well, one completed copy of this Drillers Log shall be transmitted to the State Geological Survey of Kansas, 4150 Monroe Street, Wichita, Kansas 67209. Copies of this form are available from the Conservation Division, State Corporation Commission, 3830 So. Meridian (P.O. Box 17027), Wichita, Kansas 66217. Phone AC 316-522-2206. If confidential custody is desired, please note Rule 82-2-125. Drillers Logs will be on an open file in the Oil and Gas Division, State Geological Survey of Kansas, Lawrence, Kansas 66044.

Operator Beren Corporation		DESIGNATE TYPE OF COMP.: OIL, GAS, DRY HOLE, SWDW, ETC.:
Well No. 1	Lease Name VOTH	Dry Hole
S <u>2</u> T <u>13</u> S R <u>33</u> ^E _W		


WELL LOG

Show all important zones of porosity and contents thereof; cored intervals, and all drill-stem tests, including depth interval tested, cushion used, time tool open, flowing and shut-in pressures, and recoveries.

SHOW GEOLOGICAL MARKERS, LOGS RUN, OR OTHER DESCRIPTIVE INFORMATION.

FORMATION DESCRIPTION, CONTENTS, ETC.	TOP	BOTTOM	NAME	DEPTH
Surface soil	0	42		
Clay, sand and shale	42	372		
Shale and sand	372	1380		
Shale with sand	1380	1832		
Shale and sand	1832	2292		
Lime and shale	2292	2550		
Anhydrite	2550	2572		
Shale and sand	2572	2790		
Shale	2790	3052		
Lime and shale	3052	3320		
Shale and lime	3320	3600		
Lime and shale	3600	3908		
Lime with shale	3908	3965		
Lime	3965	4750		
Rotary Total Depth	4750			

USE ADDITIONAL SHEETS, IF NECESSARY, TO COMPLETE WELL RECORD.

Date Received	<div style="text-align: center;">  Signature Don Beauchamp - Geologist Title July 17, 1979 Date </div>
---------------	---

2-13-33W

Beren Corporation
Abercrombie Drilling, Inc.
VOTH #1
C NE NE, Section 2-13S-33W
Logan County, Kansas
June 30, 1979
July 11, 1979

Surface soil
Clay, sand and shale
Shale and sand
Shale with sand
Shale and sand
Lime and shale
Anhydrite
Shale and sand
Shale
Lime and shale
Shale and lime
Lime and shale
Lime with shale
Lime
Rotary Total Depth

T.D. 4750'. Set 1st plug at 1350' with 70 sacks, 2nd plug at 360' with 20 sacks, 3rd plug at 40' solid brdige with 10 sacks, rathole with 3 sacks. Cemented with 50/50 posmix, 6% gel. Plug was down at 11:00 a.m., July 11, 1979.

Anhydrite	2550'
B/Anhydrite	2572'

[illegible]

Jack L. Partridge, Assistant Secretary-Treasurer of Abercrombie Drilling, Inc., does hereby state that the above and foregoing is a true and correct copy of the log of the VOTH #1, C NE NE, Section 2-13S-33W, Logan County, Kansas.