

15-104-20092

State Geological Survey  
WICHITA BRANCH  
KANSAS DRILLERS LOG

S. 29 T. 13S R. 35 <sup>XK</sup> W  
Loc. NW SE  
County Logan

API No. 15 \_\_\_\_\_  
County \_\_\_\_\_ Number \_\_\_\_\_

Operator  
Abercrombie Drilling, Inc.

Address  
801 Union Center, Wichita, Kansas 67202

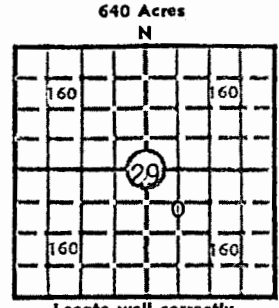
Well No. 1 Lease Name REPSHIRE

Footage Location  
feet from (N) (S) line \_\_\_\_\_ feet from (E) (W) line \_\_\_\_\_

Principal Contractor Abercrombie Drilling, Inc. Geologist Orlin Phelps

Spud Date September 25, 1977 Total Depth 4575 P.B.T.D. \_\_\_\_\_

Date Completed October 4, 1977 Oil Purchaser NONE



Elev.: Gr. 2961'  
DF 2964' KB 2966'

CASING RECORD

Report of all strings set— surface, intermediate, production, etc.

Purpose of string	Size hole drilled	Size casing set (in O.D.)	Weight lbs/ft.	Setting depth	Type cement	Sacks	Type and percent additives
Surface	12 1/4"	8-5/8"	28#	252.92'	Common	200	2% gel 3% CaCl

LINER RECORD

PERFORATION RECORD

Top, ft.	Bottom, ft.	Sacks cement	Shots per ft.	Size & type	Depth interval

TUBING RECORD

Size	Setting depth	Packer set at

ACID, FRACTURE, SHOT, CEMENT SQUEEZE RECORD

Amount and kind of material used	Depth interval treated

INITIAL PRODUCTION

Date of first production \_\_\_\_\_ Producing method (flowing, pumping, gas lift, etc.) \_\_\_\_\_

RATE OF PRODUCTION PER 24 HOURS	Oil	Gas	Water	Gas-oil ratio
	bbls.	MCF	bbls.	CFPB

Disposition of gas (vented, used on lease or sold) \_\_\_\_\_ Producing interval(s) \_\_\_\_\_

INSTRUCTIONS: As provided in KCC Rule 82-2-125, within 90 days after completion of a well, one completed copy of this Drillers Log shall be transmitted to the State Geological Survey of Kansas, 4150 Monroe Street, Wichita, Kansas 67209. Copies of this form are available from the Conservation Division, State Corporation Commission, 3830 So. Meridian (P.O. Box 17027), Wichita, Kansas 66217. Phone AC 316-522-2206. If confidential custody is desired, please note Rule 82-2-125. Drillers Logs will be on open file in the Oil and Gas Division, State Geological Survey of Kansas, Lawrence, Kansas 66044.

Operator **Abercrombie Drilling, Inc.** DESIGNATE TYPE OF COMP.: OIL, GAS, DRY HOLE, SWDW, ETC.: **Dry Hole**

Well No. **1** Lease Name **REPSHIRE**

S 29 T 13S R 35 W R

**WELL LOG**

Show all important zones of porosity and contents thereof; cored intervals, and all drill-stem tests, including depth interval tested, cushion used, time tool open, flowing and shut-in pressures, and recoveries.

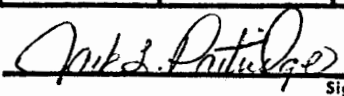
SHOW GEOLOGICAL MARKERS, LOGS RUN, OR OTHER DESCRIPTIVE INFORMATION.

FORMATION DESCRIPTION, CONTENTS, ETC.	TOP	BOTTOM	NAME	DEPTH
Sand & shale	0	2351	SAMPLE TOPS:	
Anhydrite	2351	2378		
Shale & shells	2378	2518	Anhydrite	2351 (+615)
Shale & sand	2518	2934	B/Anhydrite	2378 (+588)
Shale	2934	3422	Heebner	3753 (-787)
Shale & Lime	3422	3905	Toronto	3779 (-813)
Lime	3905	4438	Lansing	3801 (-835)
Lime & sand	4438	4515	B/KC	4157 (-1191)
Lime	4515	4575	Pawnee	4269 (-1303)
Rotary Total Depth		4575	Fort Scott	4325 (-1359)
			Cher. Shale	4355 (-1389)
			Miss.	4545 (-1579)
			ELECTRIC LOG TOPS:	
			Anhydrite	2354 (+612)
			B/Anhydrite	2375 (+591)
			Heebner	3759 (-793)
			Toronto	3780 (-814)
			Lansing	3807 (-841)
			B/KC	4160 (-1194)
			Fort Scott	4327 (-1361)
			Cherokee	4357 (-1391)
			Miss	4544 (-1578)
			ELTD	4576 (-1610)
			RTD	4575 (-1609)

DST #1: (4318-4356) 30", 30", 30", 30".  
 Weak blow - 15". Recovered 20' mud.  
 IFP 42-42, IBHP 42, FFP 42-42, RBHP 42. Temp. 118  
 DST #2: (4354-4387) 30", 60", 90", 60". Weak blow.  
 Recovered 120' oil specked muddy water. IFP 34-34  
 IBHP 1204, FFP 51-59  
 FBHP 1048 Temp 119

USE ADDITIONAL SHEETS, IF NECESSARY, TO COMPLETE WELL RECORD.

Date Received \_\_\_\_\_

  
 Signature  
 Jack L. Partridge, Ass't. Secretary-Treasurer  
 Title  
 October 11, 1977  
 Date