

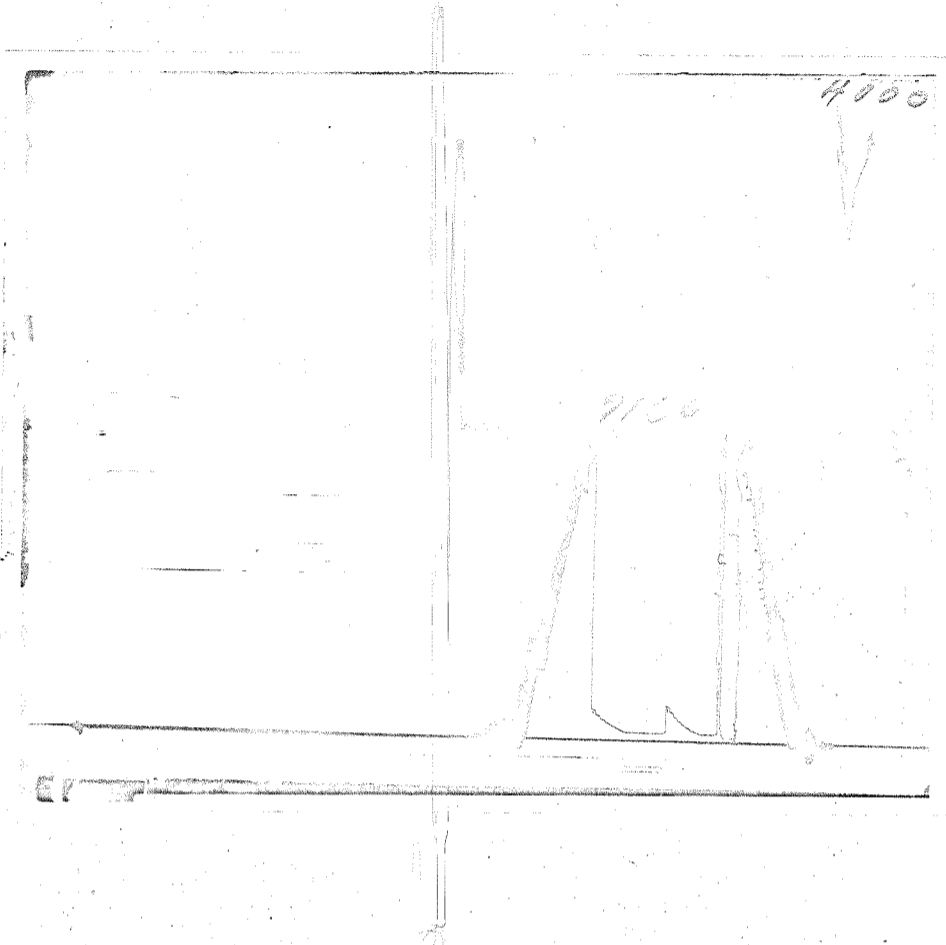


OIL WELL CEMENTING INC.

Date 7/24/70

DRILL STEM TEST RECOVERY REPORT

Ticket No. 7160



Company Will P. Ash Contractor American Drlg. Co.

Well No. 6 Lease H. Kratky County Ellsworth Sec. 20 Twp 14 Rng 10

Test No. 1 Size Hole 7 7/8 Packer Size 6 3/4 Drill Pipe Size 4 1/2 F.H.

Interval Tested From 2814 To 2845 Depth of Well 2845 Size Choke 5/8

Fluid Recovered In _____ Temp. 90 Elev. _____

Initial Hyd. 1657 P.S.I. Final Hyd. _____ P.S.I.

First Initial Flow Pressure _____ P.S.I. Opened Tool 9:50 A.M. ~~PM~~

First Final Flow Pressure 48 P.S.I. First Flow Pres. 30 Min.

Initial Closed-in Pressure _____ P.S.I. Initial Closed-in Pres. 30 Min.

Second Initial Flow Pressure _____ P.S.I. Second Flow Pres. 30 Min.

Second Final Flow Pressure 50 P.S.I. Final Closed-in Pres. 30 Min.

Final Closed-in Pressure 180 P.S.I.

Blow Very Weak For 30 Mins. Fair To Very Weak On Final Blow

Recovery 100' Gas In Pipe 80' Oil % Gas Cut Mud With Free Oil

Remarks _____

Approved By Foley Tester Bowman

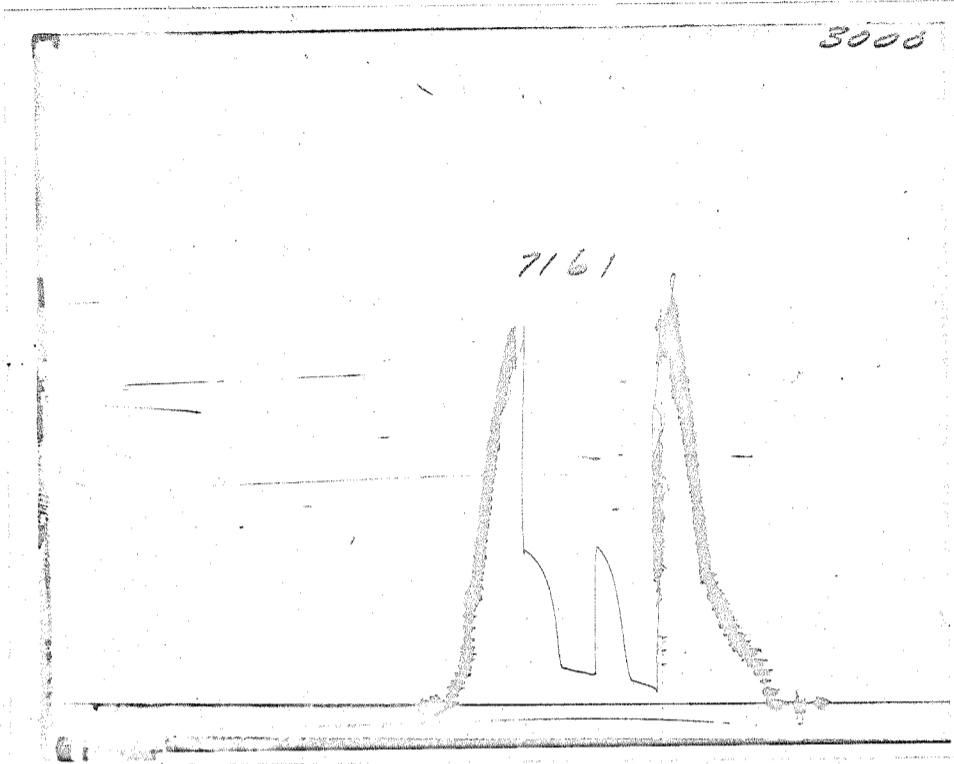


OIL WELL CEMENTING INC.

Date 7/25/70

DRILL STEM TEST RECOVERY REPORT

Ticket No. 7161



Company Will P. Ash Contractor American Drlg. Co.

Well No. 6 Lease H. Kratky County Ellsworth Sec. 20 Twp 14 Rng 10

Test No. 2 Size Hole 7 7/8 Packer Size 6 3/4 Drill Pipe Size 4 3/8 F.H.

Interval Tested From 2876 To 2895 Depth of Well 2895 Size Choke 5/8

Fluid Recovered In _____ Temp. 94 Elev. _____

Initial Hyd. 1644 P.S.I. Final Hyd. _____ P.S.I.

First Initial Flow Pressure 96 P.S.I. Opened Tool 5:12 A.M. ~~5:12~~

First Final Flow Pressure _____ P.S.I. First Flow Pres. 30 Min.

Initial Closed-in Pressure 667 P.S.I. Initial Closed-in Pres. 30 Min.

Second Initial Flow Pressure _____ P.S.I. Second Flow Pres. 30 Min.

Second Final Flow Pressure 148 P.S.I. Final Closed-in Pres. 30 Min.

Final Closed-in Pressure 660 P.S.I.

Blow Weak Thru-out Test

Recovery 60' Oil % Gas Cut Watery Mud 120' Heavy Oil % Gas Cut Very Watery Mud

180' Oil % Gas Cut Muddy Water

Remarks _____

Approved By Foley Tester Bowman