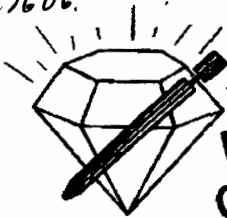


15-167-23606



KCC
FEB 22 2010
CONFIDENTIAL

DIAMOND TESTING

P.O. Box 157

HOISINGTON, KANSAS 67544

(820) 653-7550 • (800) 542-7313

1-145-12w
ON 11:00:00 1/17/10

OFF 18:00 1/17/10
RECEIVED
KANSAS CORPORATION COMMISSION

FEB 24 2010

Company BUFFALO RESOURCES LLC Lease & Well No. HEFFEL 1-1 CONSERVATION DIVISION
Contractor DUKE DRILLING RIG#8 Charge to BUFFALO RESOURCES LLC WICHITA, KS
Elevation 1780 K.B Formation LKC Effective Pay _____ Ft. Ticket No. D675
Date 1/17/10 Sec. 1 Twp. 14 S Range 12 W County RUSSELL State KANSAS
Test Approved By DAVE BARKER Diamond Representative JOHN C. RIEDL

Formation Test No. 1 Interval Tested from 2894 ft. to 2915 ft. Total Depth 2915 ft.
Packer Depth 2889 ft. Size 6 3/4 in. Packer Depth _____ ft. Size _____ in.
Packer Depth 2894 ft. Size 6 3/4 in. Packer Depth _____ ft. Size _____ in.

Depth of Selective Zone Set _____
Top Recorder Depth (Inside) 2897 ft. Recorder Number 30046 Cap. 6000 P.S.I.
Bottom Recorder Depth (Outside) 2912 ft. Recorder Number 11017 Cap. 4000 P.S.I.
Below Straddle Recorder Depth _____ ft. Recorder Number _____ Cap. _____ P.S.I.

Mud Type CHEMICAL Viscosity 45 Drill Collar Length 0 ft. I.D. 2 1/4 in.
Weight 9.1 Water Loss 9.2 cc. Weight Pipe Length 0 ft. I.D. 2 7/8 in.
Chlorides 5,800 P.P.M. Drill Pipe Length 2868 ft. I.D. 3 1/2 in.
Jars: Make BOWEN Serial Number #2 Test Tool Length 26 ft. Tool Size 3 1/2-IF in.
Did Well Flow? NO Reversed Out NO Anchor Length 21 ft. Size 4 1/2-FH in.
Main Hole Size 7 7/8 Tool Joint Size 4 1/2 in. Surface Choke Size 1 in. Bottom Choke Size 5/8 in.

Blow: 1st Open: STRONG 1 1/2 MINUTES FAIR BB 5"
2nd Open: STRONG (B.O.B 1 MIN. GAS TO SURFACE 40 MIN) STRONG BB 12"

Recovered 120 ft. of CGO (20% GAS 80% OIL) 41 GRAVITY @ 60 DEGREES
Recovered 30 ft. of SLMCGO (5% MUD 35% GAS 60% OIL)

Recovered _____ ft. of _____	Price Job
Recovered _____ ft. of _____	Other Charges
Recovered _____ ft. of _____	Insurance
Remarks: <u>TOTAL FLUID REC: 150' (150' IN DRILL PIPE)</u> <u>GAS GUAGES 1,680 CF/D ; SAMPLE TAKEN; GAS BURNED</u>	Total

Time Set Packer(s) 12:30 P.M A.M. P.M. Time Started Off Bottom 4:15 P.M A.M. P.M. Maximum Temperature 96 DEGREES
Initial Hydrostatic Pressure (A) 1405 P.S.I.
Initial Flow Period Minutes 30 (B) 45 P.S.I. to (C) 57 P.S.I.
Initial Closed In Period Minutes 60 (D) 972 P.S.I.
Final Flow Period Minutes 45 (E) 59 P.S.I. to (F) 88 P.S.I.
Final Closed In Period Minutes 90 (G) 955 P.S.I.
Final Hydrostatic Pressure (H) 1373 P.S.I.

Diamond Testing shall not be liable for damages of any kind to the property or personnel of the one for whom a test is made or for any loss suffered or sustained, directly or indirectly, through the use of its equipment, or its statement or opinion concerning the result of any test. Tools lost or damaged in the hole shall be paid for at cost by the party for whom the test is made.

1-145-12w

FEB 24 2010

CONSERVATION DIVISION
WICHITA, KS

GENERAL INFORMATION

Client Information:

Company: BUFFAL RESOURCES LLC
Contact: DEAN PATTERSON
Phone: Fax: e-mail:

Site Information:

Contact: DAVE BARKER
Phone: Fax: e-mail:

Well Information:

Name: HEFFEL 1-1
Operator: BUFFALO RESOURCES LLC
Location-Downhole:
Location-Surface: S1/14S/12W RUSSELL

KCC
FEB 27 2010
CONFIDENTIAL

Test Information:

Company: DIAMOND TESTING
Representative: JOHN RIEDL
Supervisor: DAVID BARKER
Test Type: Job Number: D675
Test Unit:
Start Date: 2010/01/17 Start Time: 11:00:00
End Date: 2110/01/17 End Time: 18:10:00
Report Date: 2010/01/17 Prepared By: JOHN RIEDL
Qualified By: DAVID BARKER

Remarks:

RECOVERY: 120' CLEAN GASSY OIL
30' SLIGHTLY MUD CUT GASSY OIL
GAS TO SURFACE DURING TEST

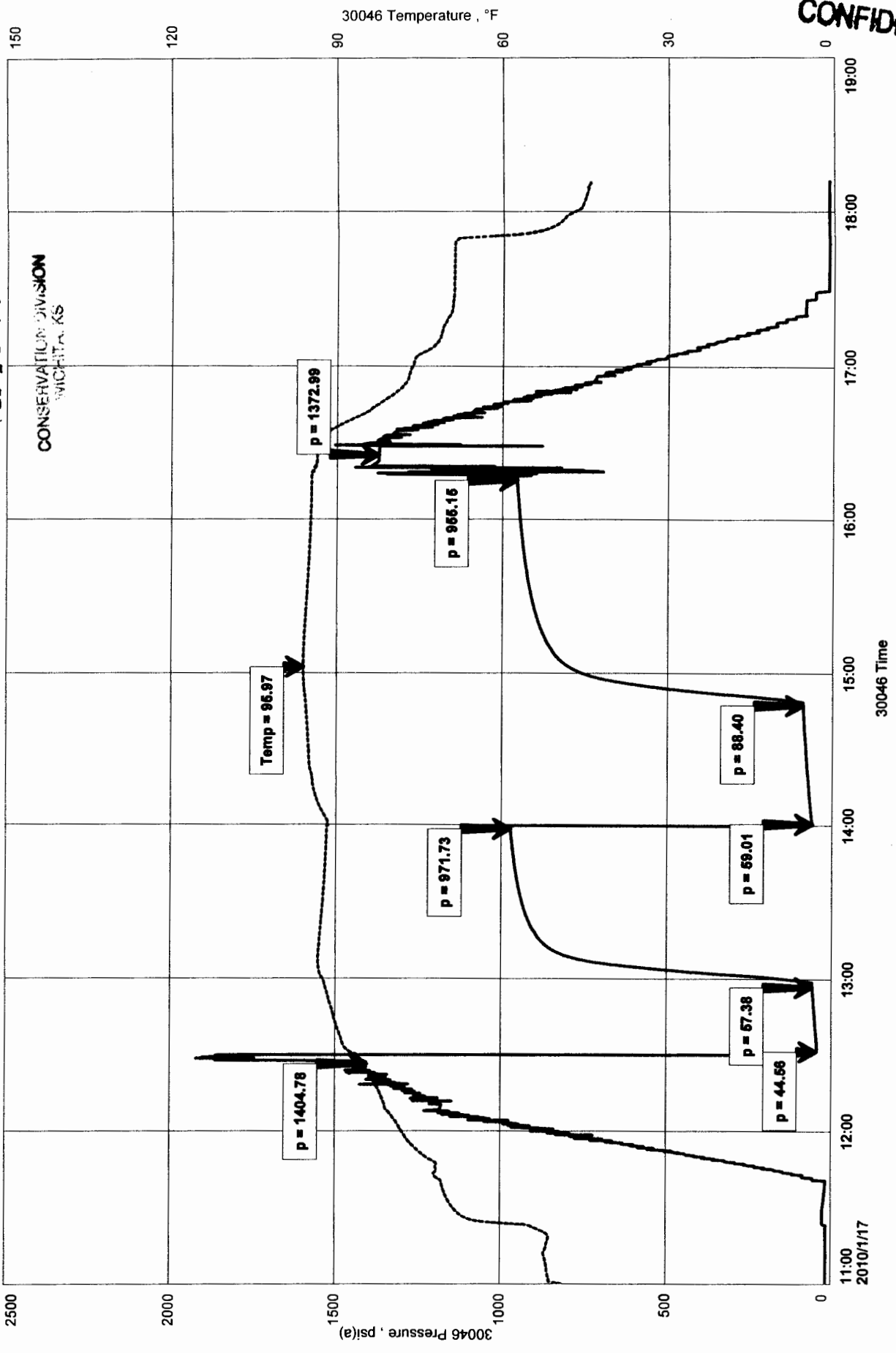
HEFFEL 1-1
Formation: LKC
Job Number: D675

RECEIVED
KANSAS CORPORATION COMMISSION

FEB 24 2010

HEFFEL 1-1

BUFFAL RESOURCES LLC
Start Test Date: 2010/01/17
Final Test Date: 2010/01/17





DIAMOND TESTING
P.O. Box 157
HOISINGTON, KANSAS 67544
(620) 653-7550 • (800) 542-7313
DRILL-STEM TEST TICKET
FILE:stcheffel1-1dst2

ON 00:01:00 1/18/10
OFF06:10 1/18/10 **KCC**
FEB 22 2010
CONFIDENTIAL

Company BUFFALO RESOURCES LLC Lease & Well No. HEFFEL 1-1
Contractor DUKE DRILLING RIG#8 Charge to BUFFALO RESOURCES LLC
Elevation 1780 K.B Formation LKC Effective Pay _____ Ft. Ticket No. D676
Date 1/18/10 Sec. 1 Twp. 14 S Range 12 W County RUSSELL State KANSAS
Test Approved By DAVE BARKER Diamond Representative JOHN C. RIEDL

Formation Test No. 2 Interval Tested from 2920 ft. to 2942 ft. Total Depth 2942 ft.
Packer Depth 2915 ft. Size 6 3/4 in. Packer Depth _____ ft. Size _____ in.
Packer Depth 2920 ft. Size 6 3/4 in. Packer Depth _____ ft. Size _____ in.
Depth of Selective Zone Set _____

Top Recorder Depth (Inside) 2923 ft. Recorder Number 30046 Cap. 6000 P.S.I.
Bottom Recorder Depth (Outside) 2939 ft. Recorder Number 11017 Cap. 4000 P.S.I.
Below Straddle Recorder Depth _____ ft. Recorder Number _____ Cap. _____ P.S.I.

Mud Type CHEMICAL Viscosity 48 Drill Collar Length 0 ft. I.D. 2 1/4 in.
Weight 9.1 Water Loss 9.2 cc. Weight Pipe Length 0 ft. I.D. 2 7/8 in.
Chlorides 6,000 P.P.M. Drill Pipe Length 2894 ft. I.D. 3 1/2 in.
Jars: Make BOWEN Serial Number #2 Test Tool Length 26 ft. Tool Size 3 1/2-1F in.
Did Well Flow? NO Reversed Out NO Anchor Length 22 ft. Size 4 1/2-FH in.
Main Hole Size 7 7/8 Tool Joint Size 4 1/2 in. Surface Choke Size 1 in. Bottom Choke Size 5/8 in.

Blow: 1st Open: STRONG(B.O.B 11 MINUTES) NO BB
2nd Open: STRONG (B.O.B 4 MIN.) WEAK BB

Recovered 450 ft. of GAS IN PIPE
Recovered 70 ft. of SLWCGOM (4%WATER 20%OIL 35%GAS 41%MUD) CHLORIDES 8,000Ppm
Recovered _____ ft. of _____
Recovered _____ ft. of _____

Recovered _____ ft. of _____	RECEIVED KANSAS CORPORATION COMMISSION	Price Job
Recovered _____ ft. of _____	FEB 24 2010	Other Charges
Remarks: <u>TOTAL FLUID REC:70' (70' IN DRILL PIPE)</u>	CONSERVATION DIVISION WICHITA, KS	Insurance
_____	_____	Total

Time Set Packer(s) 1:00 A.M A.M. P.M. Time Started Off Bottom 4:00A.M A.M. P.M. Maximum Temperature 92
Initial Hydrostatic Pressure (A) 1400 P.S.I.
Initial Flow Period Minutes 30 (B) 31 P.S.I. to (C) 42 P.S.I.
Initial Closed In Period Minutes 60 (D) 963 P.S.I.
Final Flow Period Minutes 30 (E) 46 P.S.I. to (F) 57 P.S.I.
Final Closed In Period Minutes 60 (G) 961 P.S.I.
Final Hydrostatic Pressure (H) 1356 P.S.I.

Diamond Testing shall not be liable for damages of any kind to the property or personnel of the one for whom a test is made or for any loss suffered or sustained, directly or indirectly, through the use of its equipment, or its statement or opinion concerning the result of any test. Tools lost or damaged in the hole shall be paid for at cost by the party for whom the test is made.

KCC
FEB 22 2010
CONFIDENTIAL

GENERAL INFORMATION

Client Information:

Company: BUFFALO RESOURCES LLC

Contact: DARON PATTERSON

Phone: Fax: e-mail:

RECEIVED
KANSAS CORPORATION COMMISSION

FEB 24 2010

CONSERVATION DIVISION
WICHITA, KS

Site Information:

Contact: DAVID BARKER

Phone: Fax: e-mail:

Well Information:

Name: HEFFEL 1-1

Operator: BUFFALO RESOURCES LLC

Location-Downhole:

Location-Surface: S1/14S/12W RUSSELL

Test Information:

Company: DIAMOND TESTING

Representative: JOHN RIEDL

Supervisor: DAVID BARKER

Test Type: Job Number: D676

Test Unit:

Start Date: 2010/01/18 Start Time: 00:01:00

End Date: 2010/01/18 End Time: 06:10:00

Report Date: 2010/01/18 Prepared By: JOHN RIEDL

Qualified By: DAVID BARKER

Remarks:

RECOVERY: 450' GAS IN PIPE
70' SLIGHTLY WATER CUT OILY GASSY MUD

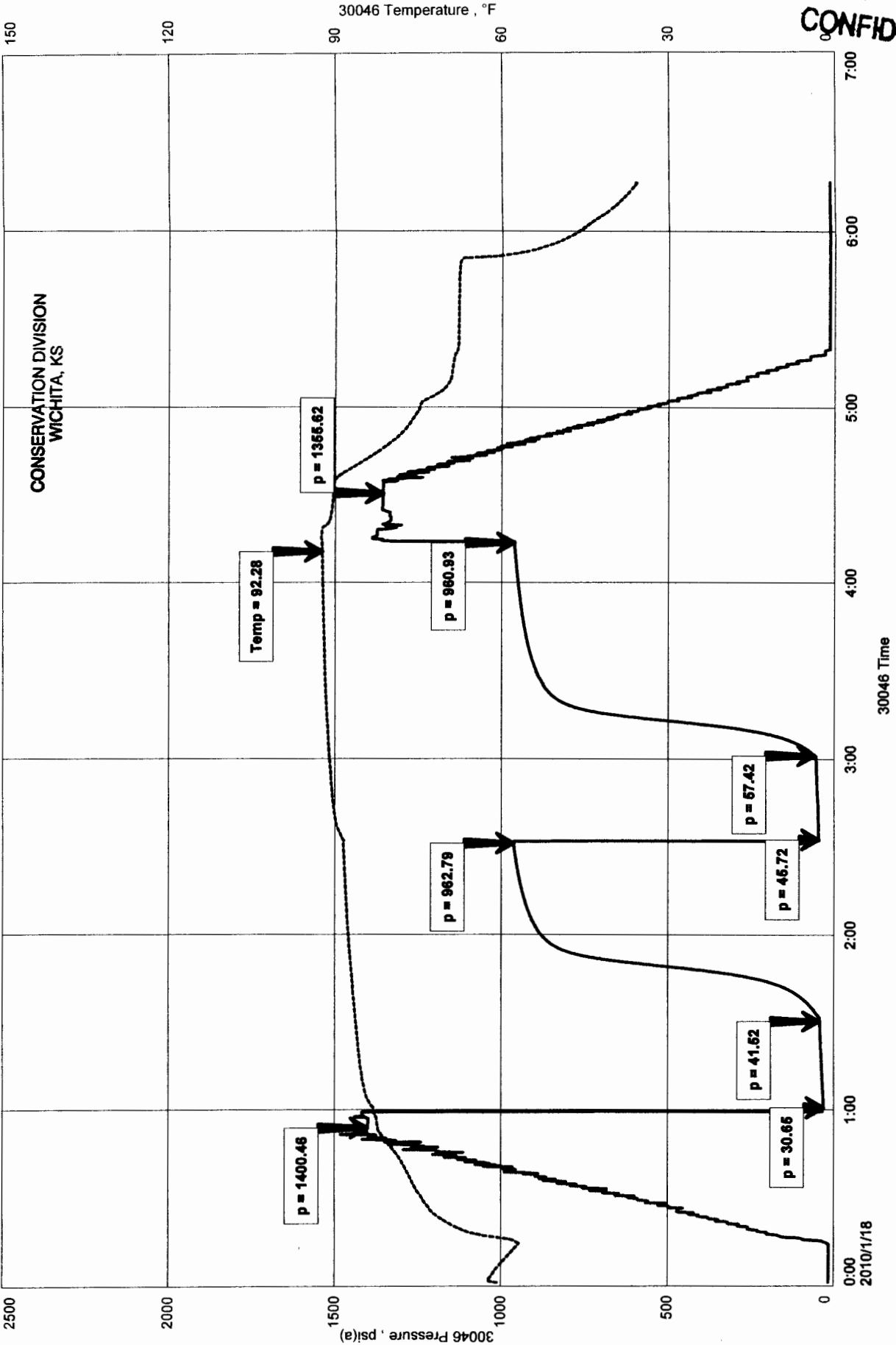
BUFFALO RESOURCES LLC
Start Test Date: 2010/01/18
Final Test Date: 2010/01/18

HEFFLER 1-1

RECEIVED
KANSAS CORPORATION COMMISSION

FEB 24 2010

HEFFEL 1-1
Formation: LKC
Job Number: D676



CONSERVATION DIVISION
WICHITA, KS

KCC
FEB 22 2010
CONFIDENTIAL



DIAMOND TESTING
 P.O. Box 157
 HOISINGTON, KANSAS 67544
 (620) 653-7550 • (800) 542-7313

ON 12:48:00 1/18/10

OFF 19:50:00 1/18/10

DRILL-STEM TEST TICKET
 FILE:stcheffel1-1dst3

KCC
FEB 22 2010
CONFIDENTIAL

Company BUFFALO RESOURCES LLC Lease & Well No. HEFFEL 1-1
 Contractor DUKE DRILLING RIG#8 Charge to BUFFALO RESOURCES LLC
 Elevation 1780 K.B Formation LKC Effective Pay _____ Ft. Ticket No. D677
 Date 1/18/10 Sec. 1 Twp. 14 S Range 12 W County RUSSELL State KANSAS
 Test Approved By DAVE BARKER Diamond Representative JOHN C. RIEDL

Formation Test No. 3 Interval Tested from 2954 ft. to 2993 ft. Total Depth 2993 ft.
 Packer Depth 2949 ft. Size 6 3/4 in. Packer Depth _____ ft. Size _____ in.
 Packer Depth 2954 ft. Size 6 3/4 in. Packer Depth _____ ft. Size _____ in.

Depth of Selective Zone Set _____
 Top Recorder Depth (Inside) 2957 ft. Recorder Number 30046 Cap. 6000 P.S.I.
 Bottom Recorder Depth (Outside) 2990 ft. Recorder Number 11017 Cap. 4000 P.S.I.
 Below Straddle Recorder Depth _____ ft. Recorder Number _____ Cap. _____ P.S.I.

Mud Type CHEMICAL Viscosity 45 Drill Collar Length 0 ft. I.D. 2 1/4 in.
 Weight 8.9 Water Loss 9.2 cc. Weight Pipe Length 0 ft. I.D. 2 7/8 in.
 Chlorides 5,800 P.P.M. Drill Pipe Length 2928 ft. I.D. 3 1/2 in.
 Jars: Make BOWEN Serial Number #2 Test Tool Length 26 ft. Tool Size 3 1/2-1F in.
 Did Well Flow? NO Reversed Out NO Anchor Length 39 ft. Size 4 1/2-FH in.
 Main Hole Size 7 7/8 Tool Joint Size 4 1/2 in. Surface Choke Size 1 in. Bottom Choke Size 5/8 in.

Blow: 1st Open: STRONG(B.O.B 7 MINUTES) NO BB
 2nd Open: STRONG (B.O.B 7 MIN.) NO BB

Recovered 650 ft. of SLMCW (3%MUD 97%WATER) 85,000Ppm CHLORIDES

Recovered _____ ft. of _____ RECEIVED
 KANSAS CORPORATION COMMISSION

Recovered _____ ft. of _____	FEB 24 2010 CONSERVATION DIVISION WICHITA, KS	Price Job
Recovered _____ ft. of _____		Other Charges
Remarks: <u>TOTAL FLUID REC:650' (650 ' IN DRILL PIPE)</u>		Insurance
_____		Total

Time Set Packer(s) 2:00 P.M A.M. P.M. Time Started Off Bottom 5:45 P.M A.M. P.M. Maximum Temperature 100
 Initial Hydrostatic Pressure (A) 1419 P.S.I.
 Initial Flow Period Minutes 30 (B) 36 P.S.I. to (C) 175 P.S.I.
 Initial Closed In Period Minutes 60 (D) 937 P.S.I.
 Final Flow Period Minutes 45 (E) 181 P.S.I. to (F) 362 P.S.I.
 Final Closed In Period Minutes 90 (G) 931 P.S.I.
 Final Hydrostatic Pressure (H) 1375 P.S.I.

Diamond Testing shall not be liable for damages of any kind to the property or personnel of the one for whom a test is made or for any loss suffered or sustained, directly or indirectly, through the use of its equipment, or its statement or opinion concerning the result of any test. Tools lost or damaged in the hole shall be paid for at cost by the party for whom the test is made.

FEB 24 2010

CONSERVATION DIVISION
WICHITA, KS

GENERAL INFORMATION

KCC
FEB 22 2010
CONFIDENTIAL

Client Information:

Company: BUFFALO RESOURCES LLC
Contact: DARON PATTERSON
Phone: Fax: e-mail:

Site Information:

Contact: DAVID BARKER
Phone: Fax: e-mail:

Well Information:

Name: HEFFEL 1-1
Operator: BUFFALO RESOURCES LLC
Location-Downhole:
Location-Surface: S1/14S/12W RUSSELL

Test Information:

Company: DIAMOND TESTING
Representative: JOHN RIEDL
Supervisor: DAVID BARKER
Test Type: Job Number: D677
Test Unit:
Start Date: 2010/01/18 Start Time: 12:40:00
End Date: 2010/01/18 End Time: 19:50:00
Report Date: 2010/01/18 Prepared By: JOHN RIEDL
Qualified By: DAVID BARKER

Remarks:

RECOVERY: 650/ WATER

BUFFALO RESOURCES LLC
Start Test Date: 2010/01/18
Final Test Date: 2010/01/18

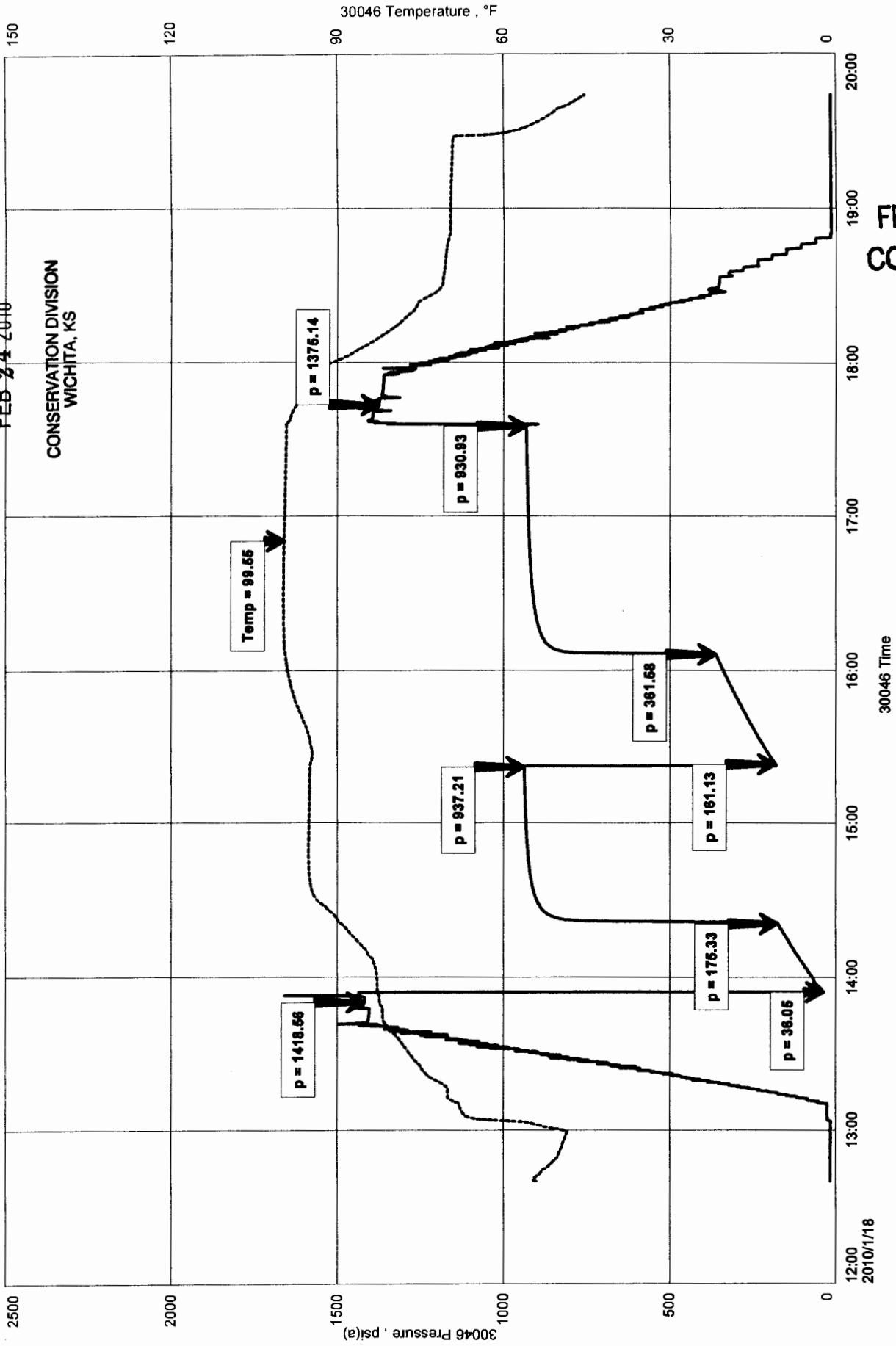
HEFFEL 1-1

RECEIVED
KANSAS CORPORATION COMMISSION

FEB 24 2010

CONSERVATION DIVISION
WICHITA, KS

HEFFEL 1-1
Formation: LKC
Job Number: D677



KCC
FEB 27 2010
CONFIDENTIAL