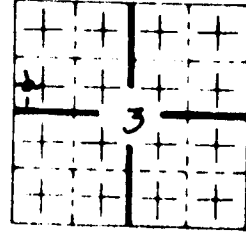


77-11

DRILLING TIME
AND
SAMPLE LOG

28-55-01

COMPANY TREX Co Oil
 WELL (LEASE) Witt
 FIELD Russell #1
 LOCATION 10/2 SW NW
 SEC. 3 TWP 14 RNG 14W
 COUNTY Russell STATE Ks.



GENERAL WELL DATA

OPER TREX Co Oil
 CONTR Empress Rig #
 COMM Nov 23, 1985
 COMP Nov 31, 1985
 ELECT SURVEY None

CASING RECORD
 SURFACE 846'
 PRODUCTION
 TD DRLG. 3300
 TD LOG

PRODUCTION

ELEVATIONS

MEASUREMENTS ARE ALL FROM KB

KB 1839 DF GL 1834

FORMATION TOPS AND STRUCTURAL POSITION

FORMATIONS	SAMPLE TOP	ELEC LOG TOP	SUB SEA DATUM	A	B	C
TOP	-860					
L56	-1147					
Ar6	-1415					
TD	-1461					

1985
 Survey
 BRANCH

REFERENCE WELLS

- A. _____
- B. _____
- C. _____

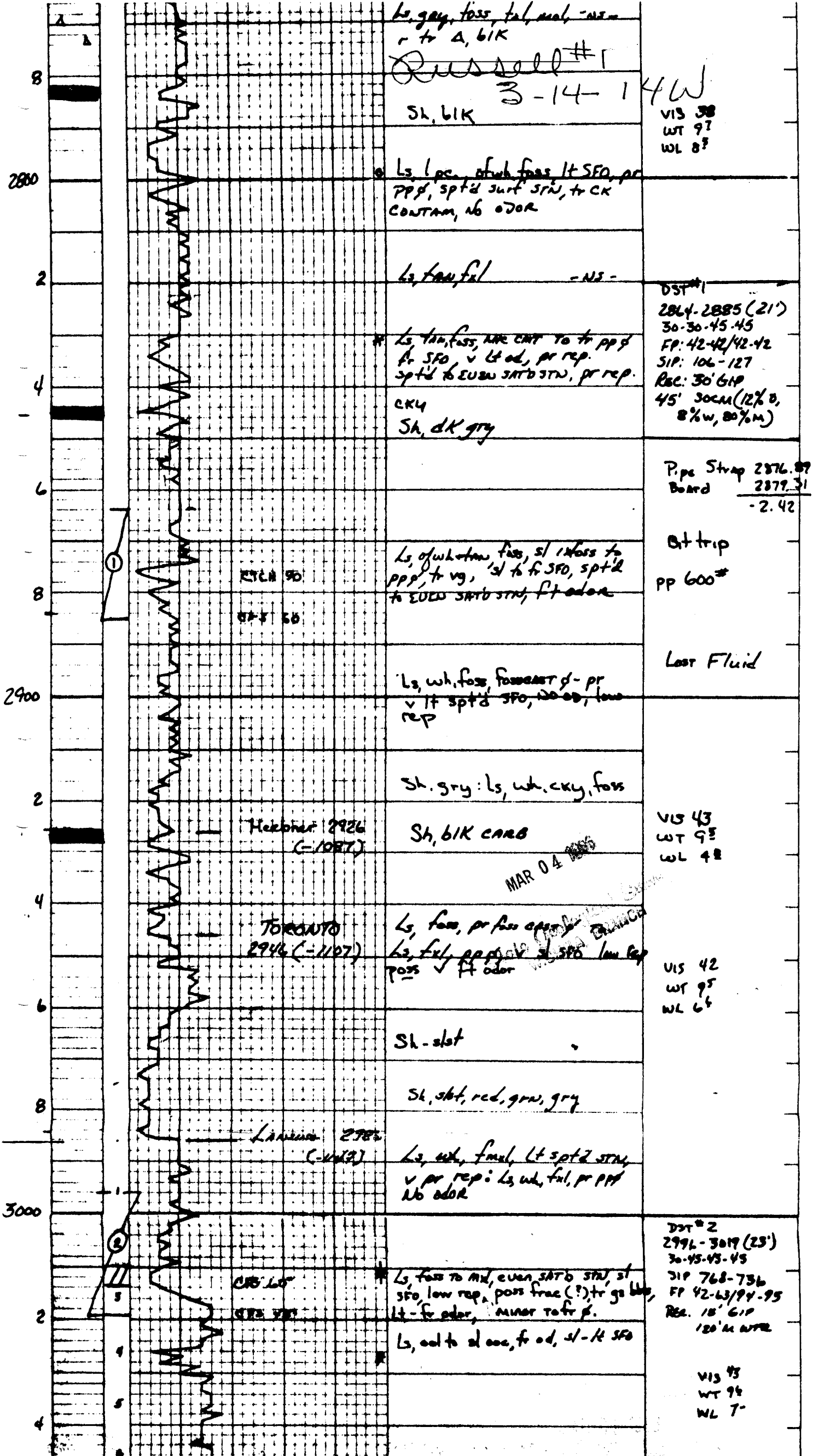
SAMPLES SAVED FROM 2500 FEET TO TD FEET

DRILLING TIME KEPT FROM 2600 FEET TO TD FEET

SAMPLES EXAMINED FROM 2300 FEET TO TD FEET

GEOLOGICAL SUPERVISION FROM 2600 FEET TO 3300 FEET

GEOLOGIST MICHAEL W. BAIR, MWR 222



Ls, gray, foss, ful, mal, -ms
 r to A, bIK
 Russell #1
 3-14-14W
 Sh, bIK

VIS 38
 WT 97
 WL 83

Ls, lpc, mlt foss, lt SFO, pr
 pp, spt'd surf str, tr ck
 CONTAM, no odor

Ls, tan, ful -NS-

DST #1
 2864-2885 (21')
 30-30-45-45
 FP: 42-42/42-42
 SIP: 106-127
 Rec: 30' GIP
 45' 30cm (12% O,
 8% W, 80% M)

Ls tan, foss, mlt crst to fr pp
 fr SFO v lt od, pr rep.
 spt'd to EUBW SATB STR, pr rep.

cky
 Sh, dk gry

Pipe Strap 2876.87
 Board 2879.31
 -2.42

Ls, of whatever foss, sl infoss to
 pp, tr vg, sl to fr SFO, spt'd
 to EUBW SATB STR, fr odor

Out trip
 PP 600#

Ls, wh, foss, forward p- pr
 v lt spt'd SFO, no od, low
 rep

Lost Fluid

Sh. gry: ls, wh, cky, foss

Sh, bIK carb

VIS 43
 WT 95
 WL 48

MAR 04 1955

Ls, foss, pr foss apert
 Ls, ful, pp, sl SFO low rep
 poss v fr odor

VIS 42
 WT 95
 WL 65

Sh. slot

Sh, slot, red, grn, gry

Ls, wh, ful, lt spt'd str,
 v pr rep: Ls, wh, ful, pr pp
 No odor

DST #2
 2994-3019 (25')
 30-45-45-45
 SIP 768-736
 FP 42-63/94-95
 Rec: 18' GIP
 120' M WFL

Ls, foss to ml, even SATB STR, sl
 SFO, low rep, poss frac (?) tr ga blk,
 lt-fr odor, minor to fr p.

Ls, od to sl acc, fr od, sl-lt SFO

VIS 43
 WT 94
 WL 7-

V15 93
WT 96
WL 7-

Russell #1

3-14-14W

Ls, wh, dse, d'cky

3-14-14W

Ls, tan, ful

L Russell

Ls, ooc, s/sfo, ooc, p'

Ls, poss spt'd surf str
v ft od

Ls, cky, mal-acc. ~~mal-acc~~
SFO. Sh, blk

A/A

Sh, blk, gry

Sh, gry: Ls, wh, ful
fr tan A

* Ls, wh, ool to ful, fr mal p, pr
1st p 15 ft rx, v of sfo, spt'd surf str
1 pc w/ 10% dolo xls, No odor
to pass v ft odor.

Ls, wh, dse, fr ck, v s/sfo
spt'd surf str, low rep.
No odor

Ls, A/A, poss v ft od

Ls, wh, lt spt'd surf str
pr p'd, poss v ft odor
low rep.

Ls, ful, fass, lt sfo

Dol, tan, mal, fr od, lt
SFO, r SATO str, low rep
MST w/ pr p'

MAR 04 1906
State Geological Survey
MICHIGAN BRANCH

#3 3236-3254
30-30-30-30
42-106/133-170
1067-1067

220' w/g ment oil
180' oil spt'd wtr
55% oil 35% w 10% r
4% oil 98% wtr

#4 1800' SW

3100

2

4

6

8

-3200

2

4

50

6

8

3300

A-6

CES
CES
CES

1800' SW