

JOHN O. FARMER, INC.

P.O. Box 352

Distribution:

Presley Petroleum
Terry Marple
Gerald Furseth Revocable Trust
W.C. Talbott
Robert Schmidt
Nancy Talbott
Pinnacle Resources
Grand Prairie
Aven Weaverling

Russell, KS 67665
(785) 483-3144

Dietz #1

2,290' FNL & 400' FWL (SW Russell 3D)
Sec. 18-14S-14W
Russell County, Kansas
1,876 'G.L.
1,884 'K.B.

Drilling Contractor:

Discovery Drilling - Rig #2
Cell. 785-635-1412
Toolpusher - Dave Dreiling
Geologist - Tony Richardson
Cell (785) 737-7258
Home (785) 662-3272

API #15-167-23,418-0000

TIGHT HOLE - DO NOT RELEASE INFORMATION

3/16/2007

Move in Rig up, will spud 3/17

3/17/2007

Spud 12 1/4" @ 3 pm, drill 492', ran 10 Joints of new 23#- 8 5/8" (480') set @ 490', cemented by Quality w/ 225 sx Common, 2% gel 3% CC; cement did circulate. Completed @ 12:00 AM

3/18/2007

492', waiting on cement

3/19/2007

1,950', drilling

3/20/2007

2,782', drilling

DST #1- 3,060-3,086' (Lansing B)

30" - 30" - 60" - 60"

IF: BOB in 5 min, surface blow back on shut in
FF: BOB in 9 min, surface blow back on shut in

REC: 390' Gas in Pipe

30' HO&GCMW (15%G, 20%W, 30%O, 35%M)
60' O&GCMW (10%O, 15%G, 20%M 55%W)
60' GCMW

180' Water (Chl. 36,000)

330' Total Fluid Recovery

FP: 29-83, 93-183#
SIP: 561-557#
HP: 1,475-1,456#
BHT: 102'

3/21/2007

3,104', circulate for samples

DST #2- 3,086-3,104' (Lansing C)

30" - 30" - 45" - 45"

IF: BOB in 6 min, surface blow back on shut in
FF: BOB immediately, surface blow back on shut in

REC: 1,255' Gas in Pipe

45' Muddy Gassy Oil (10%M, 35%G, 55%O)

FP: 16-22#, 18-32#
SIP: 650-653#
HP: 1,507-1,458#
BHT: 97'

DST #3- 3,116-3,160' (Lansing E-G)

30" - 30" - 30" - 30"

IF: BOB immediately, 2" blow back on shut in

FF: BOB in 2 min, Gas to surface in 20 min, 3" blow back on shut in

REC: 3,160' Gas in Pipe

124' Muddy Gassy Oil (10%M, 35%G, 55%O)
310' Clean Oil (40' API)
124' GMCWO (5%M, 15%W, 35%G, 45%O)
62' SO&GCW (2%O, 10%G, 88%W)
250' Salt Water (Chl. 30,000)

870' Total Fluid Recovery

FP: 121-263, 275-375#
SIP: 538-535#
HP: 1,530-1,476#
BHT: 102' F

3/22/2007

3,245', drilling

DST #4- 3,204-3,284' (Lansing I-K)

30" - 30" - 30" - 30"

IF: weak blow building to 1"

FF: surface blow

REC: 45' SOCM (2% O, 98% M)

FP: 27-38#, 43-48#
SIP: 736-701#
HP: 1,547-1,531#
BHT: 97'

continued on next page

John O. Farmer, Inc. Dumler B #1 W/2 W/2 SW 1,872 KB		Estim. from 3D Seismic	JOHN O. FARMER, INC. Dietz #1 1884			
			Sample		E-Log	
Anhydrite			917	967	918	966
Topoka	2,754 -882		2,765	-881	2765	-881
Heebner	2,983 -1111		2,994	-1110	2992	-1108
Toronto	3,001 -1129		3,011	-1127	3310	-1426
Lansing	3,042 -1170	-1165	3,049	-1165	3049	-1165
Stark Sh	3,244 -1372		3266	-1382	3254	-1370
B/KC	3,283 -1411		3296	-1412	3296	-1412
Gor Sd						
Arbuckle			3309	-1425	3310	-1426
RTD			3370	-1486		
LTD	3,299 -1427				3370	-1486



Dual Compensated Porosity Log

TAL LOG (785) 625-3858

No.	Company	John O. Farmer, Inc.	
	Well	Dietz #1	
	Field	Gorham	
	County	Russell	State

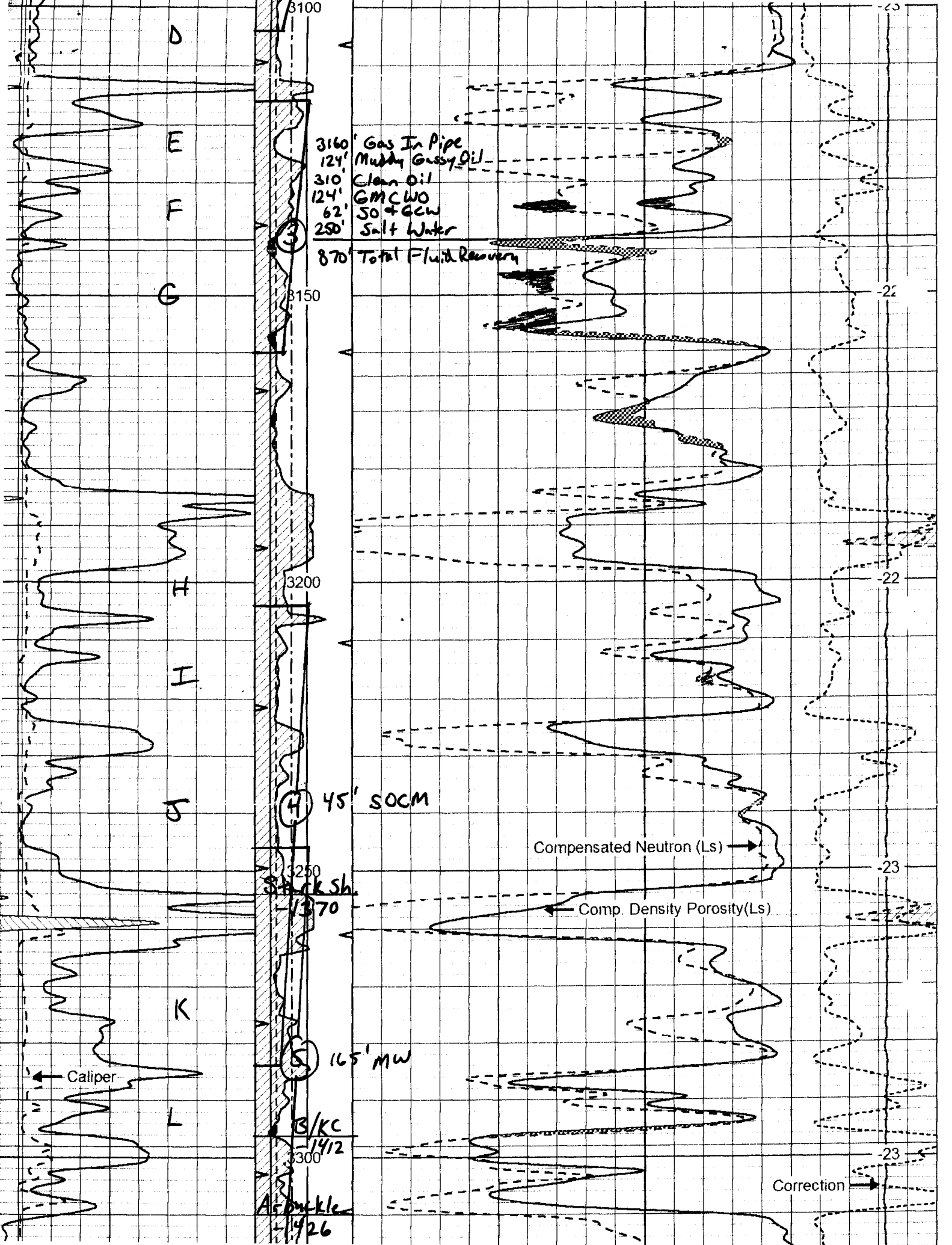
(Handwritten initials: JOF)

Location	2290' FNL & 400' FWL	Other Services DIE MEL
Sec: 18	Twp: 14S	Rge: 14W

ment Datum	Ground Level	Elevation 1876	Elevation
asured From	Kelly Bushing	8 Ft. Above Perm. Datum	K.B. 1884
Measured From	Kelly Bushing		D.F. G.L. 1876

	3/23/2007	
umber	One	
.og	CNL / CDL	
Driller	3370	
Logger	3370	
1 Logged Interval	3368	
ogged Interval	2700	
Fluid In Hole	Chemical	
inity, PPM CL	9,000	
nsity	9.0	
rel	Full	
Rec. Temp. F	112	
ting Rig Time	5 Hours	
ment -- Location	10 Hays	
ded By	C. McLaughlin	
ssed By	Terry Richardson	

Borehole Record			Casing Record			
Bit	From	To	Size	Wgt.	From	To
12.25	0	490	8.625	23#	0	490
7.875	490	TD				



CTBP @ 3175

Muncie Ck

3200

H

I

J

45' SOCM

④

3250
Stack Sh.

-1370

100% Water

K

Hasbuckney

⑤ 165' MW

B/KC

-1412

3300

L

Arbuckle

-1426

3350

FR GR

FR MEL

-22

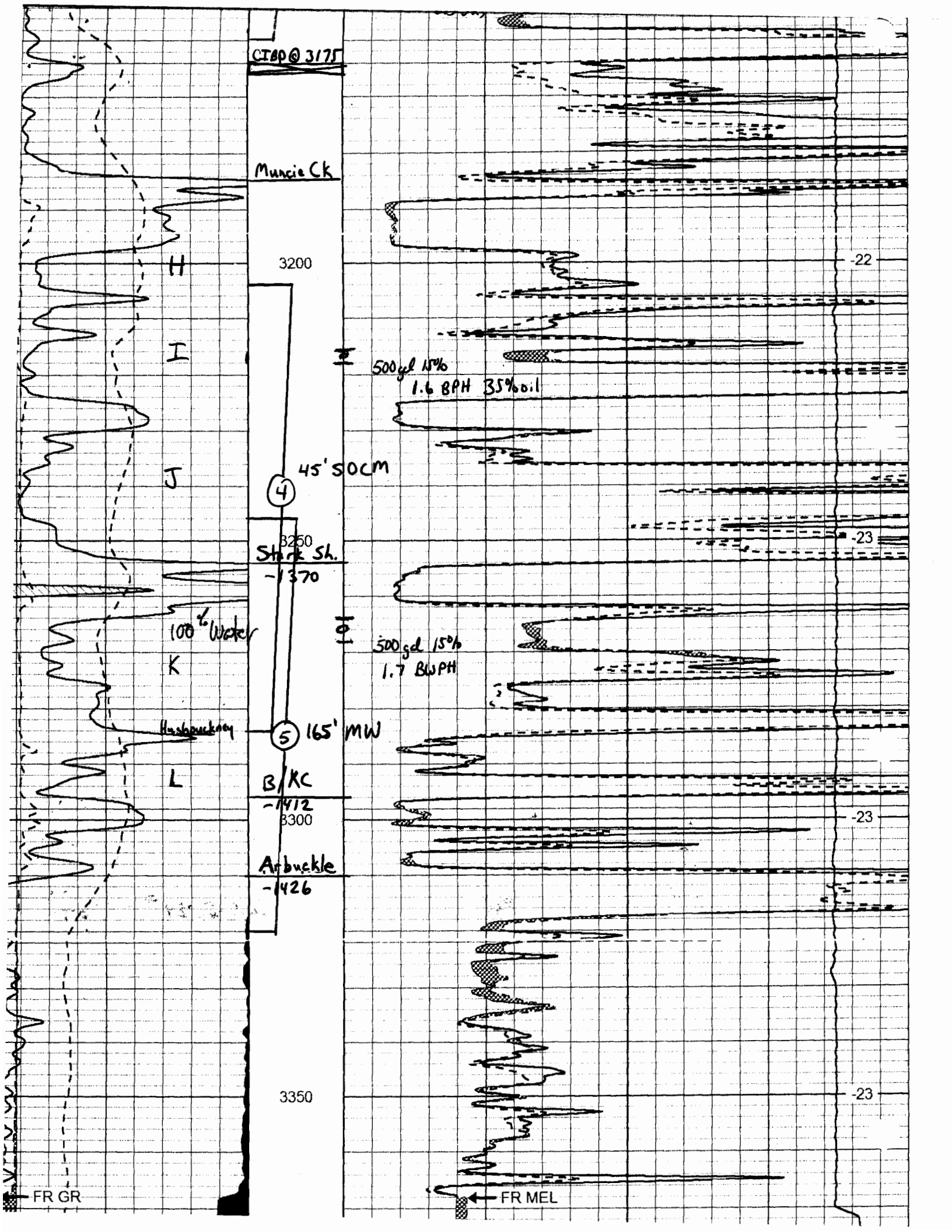
-23

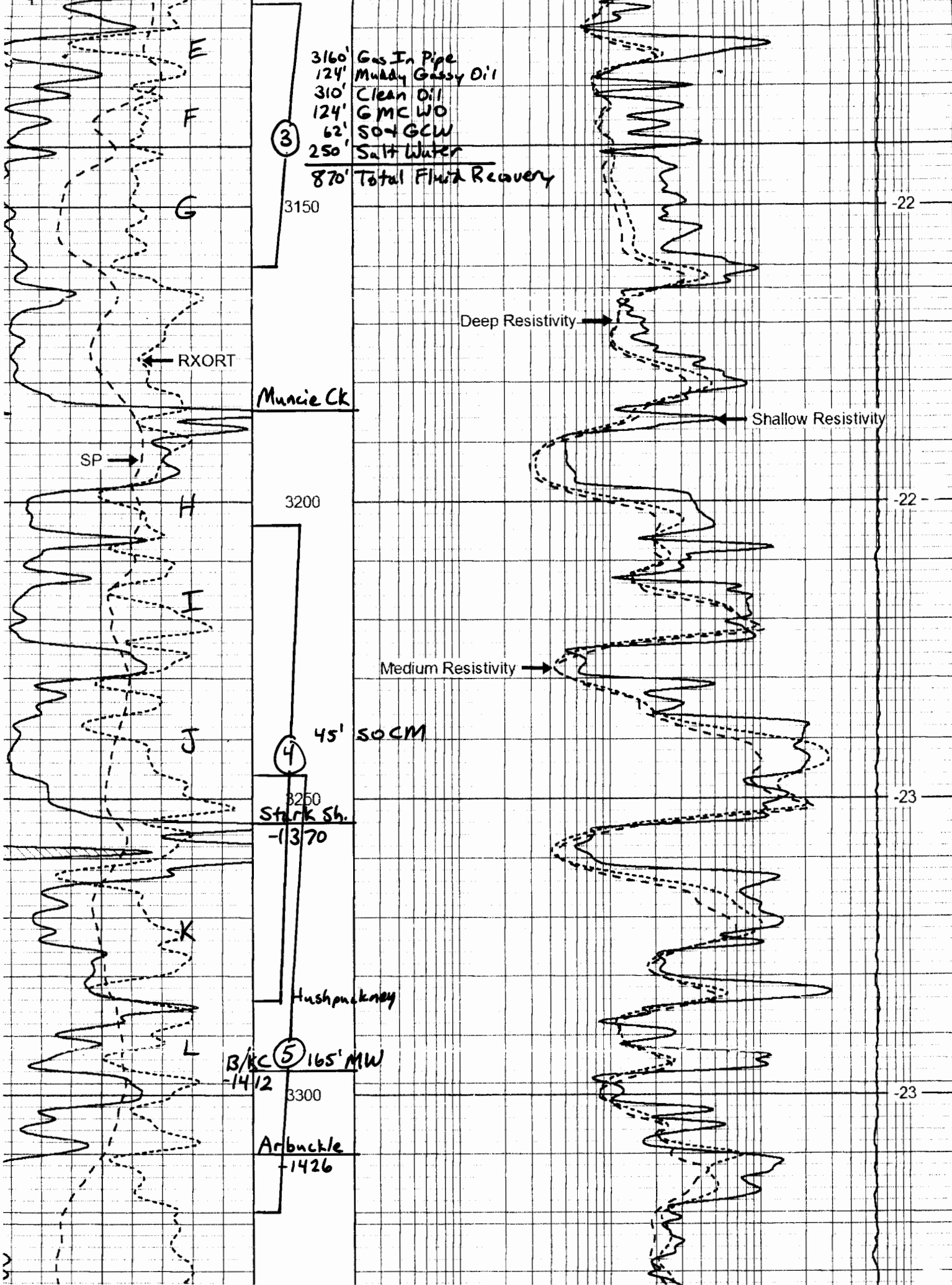
-23

-23

500 gal 15%
1.6 BPH 35% oil

500 gal 15%
1.7 BPH





3160' Gas In Pipe
 124' Muddy Gassy Oil
 310' Clean Oil
 124' G MC WO
 62' SO4 GCW
 250' Salt Water
 870' Total Fluid Recovery

③

3150

-22-

Deep Resistivity →

← RXORT

Muncie Ck

← Shallow Resistivity

SP →

3200

-22-

Medium Resistivity →

J

45' SO4 CM

④

3250

-23-

Stark Sh.

-1370

K

Hushpuckney

B/KC ⑤ 165' MW

-1412

3300

-23-

Arbuckle

-1426