

Company **DaMar Resources, Inc.**
 Address **234 W. 11th, Ste. A, Box 70**
 CSZ **Hays, KS 67601**
 Attn. **Jim Musgrove**

Lease Name **Huser**
 Lease # **1**
 Legal Desc **NE-SE-NW-SW**
 Section **16**
 Township **14S**
 County **Ellis**
 Drilling Cont **L.D. Drilling, Inc. Rig #1**

Job Ticket **2060**
 Range **16W**
 State **KS**

KCS

Comments

15051-25829-0000

GENERAL INFORMATION

Test # 1
 Tester **Tim Venters**
 Test Type **Conventional Bottom Hole Successful Test**
 # of Packers **2.0** Packer Size **6 3/4**

Mud Type **Gel Chem**
 Mud Weight **8.7** Viscosity **50.0**
 Filtrate **10.5** Chlorides **3000**

Drill Collar Len **0**
 Wght Pipe Len **0**

Formation **Toronto/ Lansing "A"**
 Interval Top **3096.0** Bottom **3166.0**
 Anchor Len Below **70.0** Between **0**
 Total Depth **3166.0**

Blow Type **Weak surface blow at the start of the initial flow period, building to 2 inches.**
Weak surface blow at the start of the final flow period, buiding to 15 inches.
Times: 5, 45, 60, 90.

Chokes **3/4**
 Top Recorder # **W1119**
 Mid Recorder #
 Bott Recorder # **13565**

Mileage **112**
 Standby Time **0**
 Extra Equipmnt
 Time on Site **9:35 AM**
 Tool Picked Up **10:45 AM**
 Tool Layed Dwn **5:25 PM**

Elevation **1898.00** Kelley Bushings **1902.00**

Start Date/Time **9/29/2008 10:06 AM**
 End Date/Time **9/29/2008 5:36 PM**

Hole Size **7 7/8**

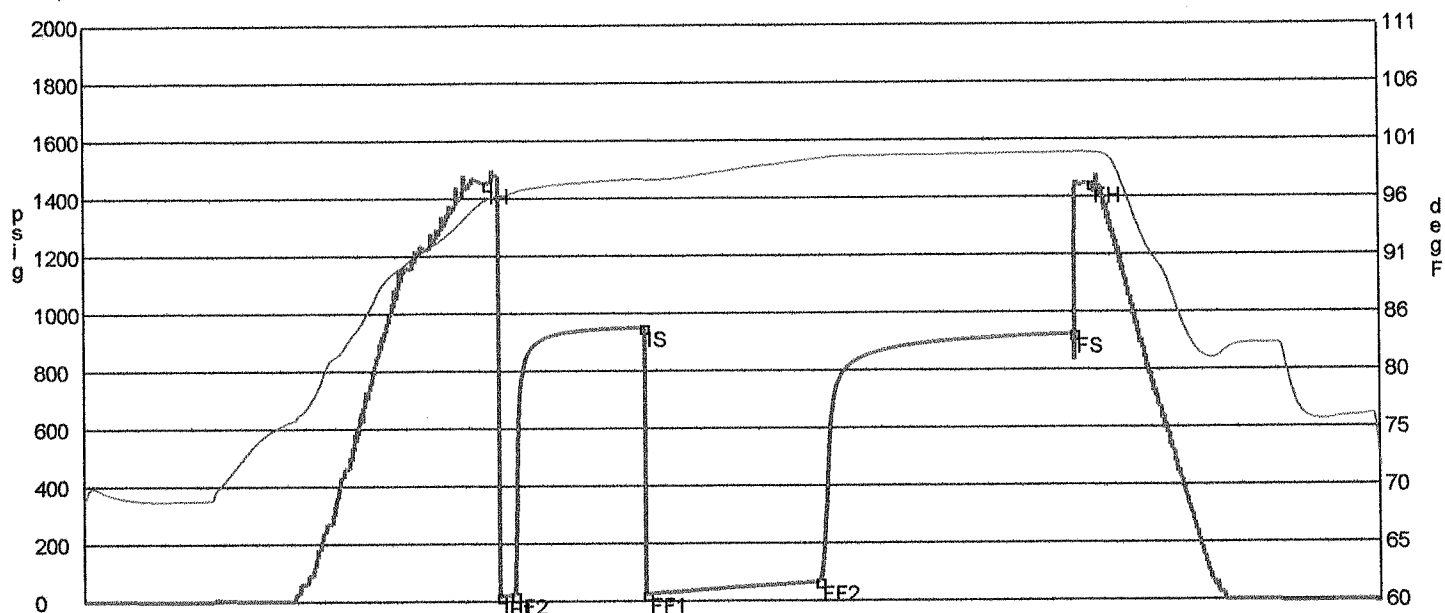
Approved By

16-14s-16w

RECOVERY

Feet	Description	Gas	Oil	Water	Mud
45	Heavy mud cut water	0% 0ft	0% 0ft	70% 31.5ft	30% 13.5ft
65	Slight mud cut water	0% 0ft	0% 0ft	95% 61.8ft	5% 3.2ft

DST Fluids **61000**



	Date	Time	Pressure	Temp	
IH	9/29/2008 12:25:00 PM	2.316667	1448.59	95.565	Initial Hydro-static
IF1	9/29/2008 12:29:15 PM	2.3875	16.296	95.876	Initial Flow (1)
IF2	9/29/2008 12:34:15 PM	2.470833	21.972	96.196	Initial Flow (2)
IS	9/29/2008 1:19:00 PM	3.216667	950.707	97.448	Initial Shut-In
FF1	9/29/2008 1:19:30 PM	3.225	23.909	97.379	Final Flow (1)
FF2	9/29/2008 2:19:30 PM	4.225	64.73	99.167	Final Flow (2)
FS	9/29/2008 3:49:15 PM	5.720833	922.702	99.637	Final Shut-In
FH	9/29/2008 3:55:30 PM	5.825	1444.334	99.622	Final Hydro-static

GAS FLOWS

Min Into IFP Min Into FFP Gas Flows Pressure Choke

Company **DaMar Resources, Inc.**
 Address **234 W. 11th, Ste. A, Box 70**
 CSZ **Hays, KS 67601**
 Attn. **Jim Musgrove**

Lease Name **Huser**
 Lease # **1**
 Legal Desc **NE-SE-NW-SW** Job Ticket **2060**
 Section **16** Range **16W**
 Township **14S**
 County **Ellis** State **KS**
 Drilling Cont **L.D. Drilling, Inc. Rig #1**

Comments

GENERAL INFORMATION

Test # **2** Test Date **9/30/2008**
 Tester **Tim Venters**
 Test Type **Conventional Bottom Hole Successful Test**

of Packers **2.0** Packer Size **6 3/4**

Mud Type **Gel Chem**
 Mud Weight **8.7** Viscosity **50.0**
 Filtrate **10.5** Chlorides **3000**

Drill Collar Len **0**
 Wght Pipe Len **0**

Formation **Lansing "B-C"**
 Interval Top **3164.0** Bottom **3210.0**
 Anchor Len Below **46.0** Between **0**
 Total Depth **3210.0**

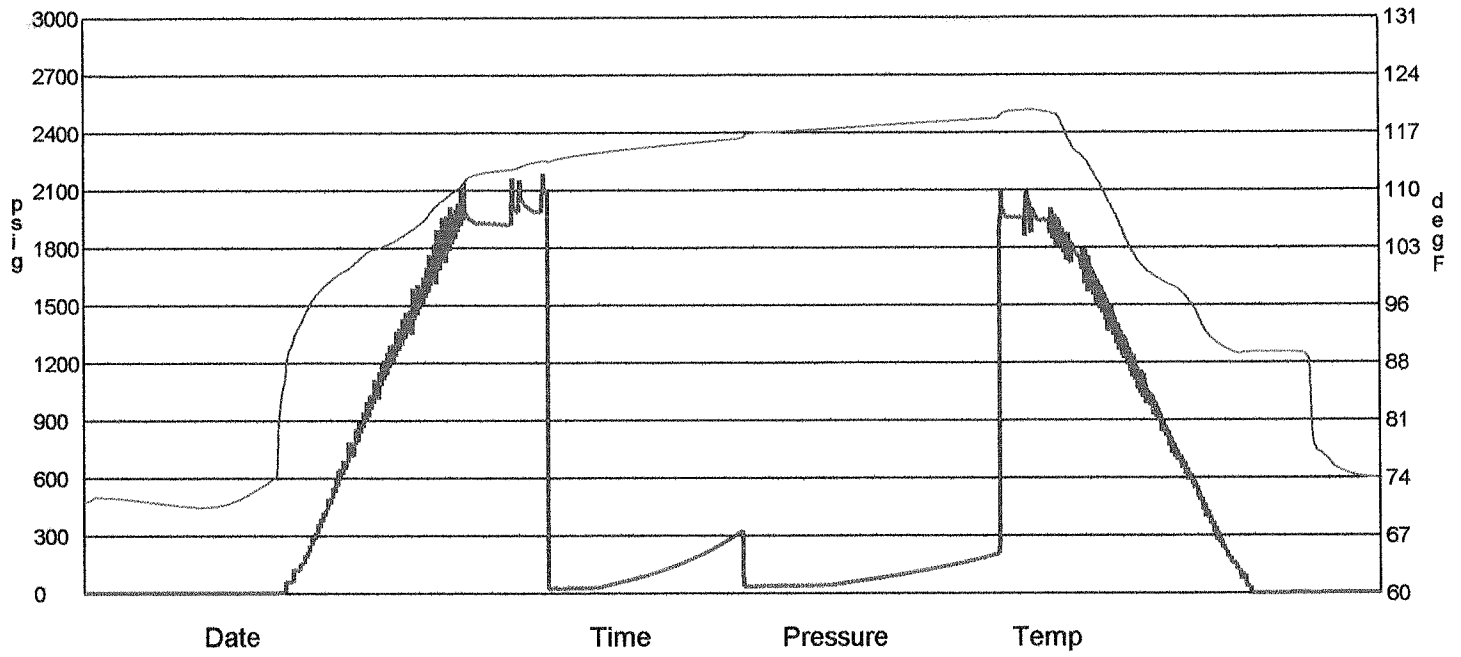
Blow Type **Weak surface blow at the start of the initial flow period, building to 1 1/2 inches. Very weak surface blow back lasting about 5 minutes. Fairly strong blow at the start of the final flow period, building, reaching the bottom of the bucket 32 1/2 minutes. Times: 5, 45, 60, 96.**

Chokes **3/4** Hole Size **7 7/8**
 Top Recorder # **W1119**
 Mid Recorder #
 Bott Recorder # **13565**
 Mileage **36** Approved By
 Standby Time **0**
 Extra Equipmnt
 Time on Site **12:20 AM**
 Tool Picked Up **1:00 AM**
 Tool Layed Dwn **2:12 AM**
 Elevation **1898.00** Kelley Bushings **1902.00**
 Start Date/Time **8/22/2008 1:25 AM**
 End Date/Time **8/22/2008 8:53 AM**

RECOVERY

Feet	Description	Gas	Oil	Water	Mud
165	Gas in Pipe	100% 165ft	0% 0ft	0% 0ft	0% 0ft
25	Oil cut mud	0% 0ft	17% 4.2ft	0% 0ft	83% 20.8ft

DST Fluids **0**



GAS FLOWS

Min Into IFP Min Into FFP Gas Flows Pressure Choke

Company **DaMar Resources, Inc.**
 Address **234 W. 11th, Ste. A, Box 70**
 CSZ **Hays, KS 67601**
 Attn. **Jim Musgrove**

Lease Name **Huser**
 Lease # **1**
 Legal Desc **NE-SE-NW-SW** Job Ticket **2060**
 Section **16** Range **16W**
 Township **14S**
 County **Ellis** State **KS**
 Drilling Cont **L.D. Drilling, Inc. Rig #1**

Comments

GENERAL INFORMATION

Test # **3** Test Date **9/30/2008**
 Tester **Tim Venters**
 Test Type **Conventional Bottom Hole Successful Test**

of Packers **2.0** Packer Size **6 3/4**

Mud Type **Gel Chem**
 Mud Weight **8.9** Viscosity **42.0**
 Filtrate **12.8** Chlorides **8000**

Drill Collar Len **0**
 Wght Pipe Len **0**

Formation **Lansing "E,F,G"**
 Interval Top **3208.0** Bottom **3240.0**
 Anchor Len Below **32.0** Between **0**
 Total Depth **3240.0**

Blow Type **Strong blow throughout the initial flow period, building to 16 inches. Strong b throughout the final flow period, building, reaching the bottom of the bucket in 6 minutes. I had my 2 inch flow valve open 1/4 inch, and still blew off bottom. Weak surface blow back at the start of the final shut-in period, building to 3 inches. Times: 5, 60, 60, 90. Oil Gravity: 32**

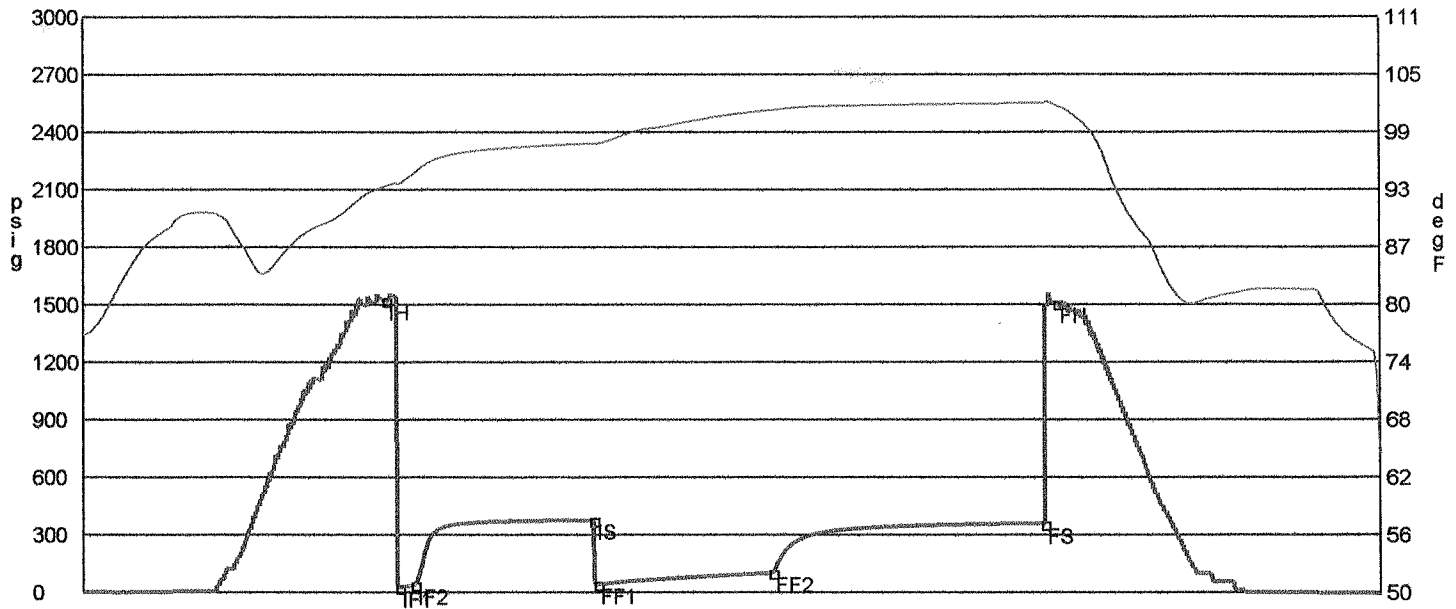
Chokes **3/4** Hole Size **7 7/8**
 Top Recorder # **W1119**
 Mid Recorder #
 Bott Recorder # **13565**
 Mileage **36** Approved By
 Standby Time **0**
 Extra Equipmnt
 Time on Site **2:40 PM**
 Tool Picked Up **3:35 PM**
 Tool Layed Dwn **10:05 PM**
 Elevation **1898.00** Kelley Bushings **1902.00**

Start Date/Time **9/30/2008 3:07 PM**
 End Date/Time **9/30/2008 10:21 PM**

RECOVERY

Feet	Description	Gas	Oil	Water	Mud
430	Gas in Pipe	100% 430ft	0% 0ft	0% 0ft	0% 0ft
35	Clean oil	0% 0ft	100% 35ft	0% 0ft	0% 0ft
30	Oil cut mud	0% 0ft	13% 3.9ft	0% 0ft	87% 26.1ft
65	Oil & water cut mud	0% 0ft	13% 8.4ft	23% 15ft	64% 41.6ft
60	Very slight (trace) oil, mud cut water	0% 0ft	trace	85% 51ft	15% 9ft

DST Fluids **72000**



	Date	Time	Pressure	Temp	
IH	9/30/2008 4:47:00 PM	1.666667	1521.096	93.086	Initial Hydro-static
IF1	9/30/2008 4:51:15 PM	1.7375	24.753	93.299	Initial Flow (1)
IF2	9/30/2008 4:56:30 PM	1.825	36.917	94.401	Initial Flow (2)
IS	9/30/2008 5:56:00 PM	2.816667	376.413	97.632	Initial Shut-In
FF1	9/30/2008 5:57:15 PM	2.8375	41.013	97.615	Final Flow (1)
FF2	9/30/2008 6:56:15 PM	3.820833	100.639	101.146	Final Flow (2)
FS	9/30/2008 8:27:30 PM	5.341667	353.633	101.85	Final Shut-In
FH	9/30/2008 8:31:45 PM	5.4125	1503.664	101.624	Final Hydro-static

GAS FLOWS

Min Into IFP Min Into FFP Gas Flows Pressure Choke

Company **DaMar Resources, Inc.**
 Address **234 W. 11th, Ste. A, Box 70**
 CSZ **Hays, KS 67601**
 Attn. **Jim Musgrove**

Lease Name **Huser**
 Lease # **1**
 Legal Desc **NE-SE-NW-SW** Job Ticket **2060**
 Section **16** Range **16W**
 Township **14S**
 County **Ellis** State **KS**
 Drilling Cont **L.D. Drilling, Inc. Rig #1**

Comments

GENERAL INFORMATION

Test # **4** Test Date **10/1/2008**
 Tester **Tim Venters**
 Test Type **Conventional Bottom Hole**
Successful Test
 # of Packers **2.0** Packer Size **6 3/4**
 Mud Type **Gel Chem**
 Mud Weight **9.2** Viscosity **45.0**
 Filtrate **10.4** Chlorides **8000**

Chokes **3/4** Hole Size **7 7/8**
 Top Recorder # **W1119**
 Mid Recorder #
 Bott Recorder # **13565**
 Mileage **36** Approved By
 Standby Time **0**
 Extra Equipmnt
 Time on Site **11:15 AM**
 Tool Picked Up **12:15 PM**
 Tool Layed Dwn **6:15 PM**
 Elevation **1898.00** Kelley Bushings **1902.00**

Drill Collar Len **0**
 Wght Pipe Len **0**

Formation **Lansing "H-I-J-K"**
 Interval Top **3271.0** Bottom **3370.0**
 Anchor Len Below **99.0** Between **0**
 Total Depth **3370.0**

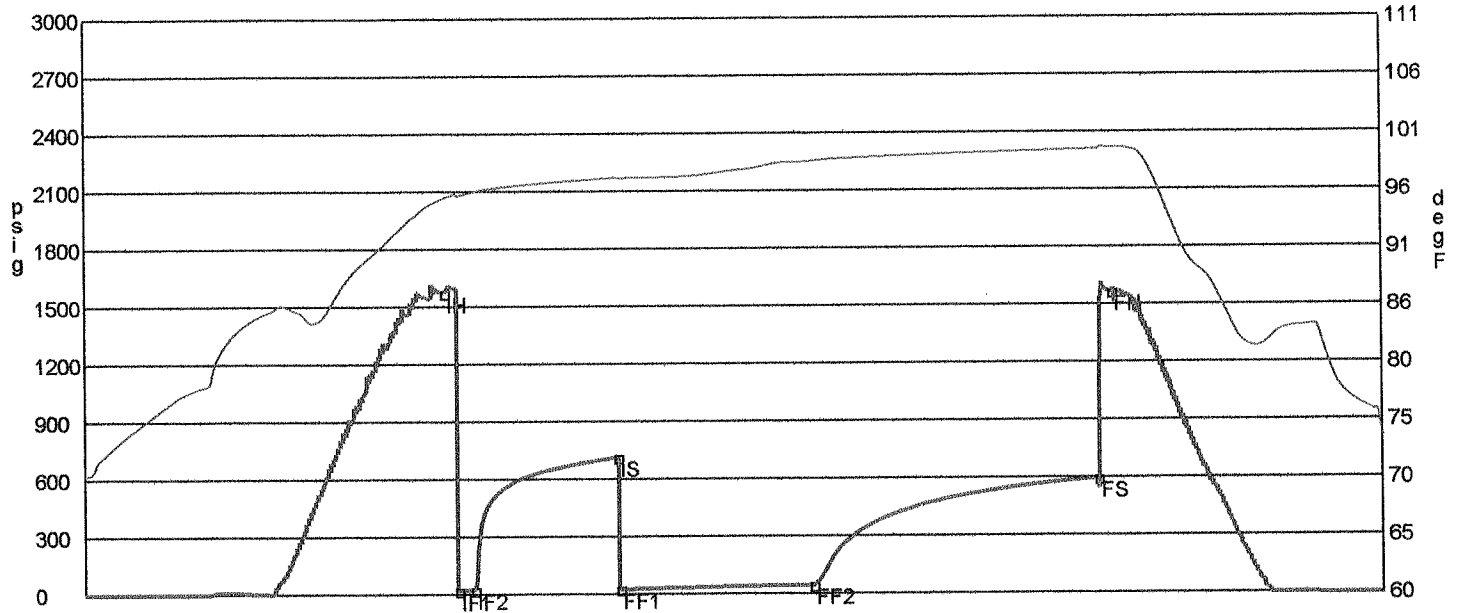
Start Date/Time **10/1/2008 11:42 AM**
 End Date/Time **10/1/2008 6:26 PM**

Blow Type **Weak surface blow at the start of the initial flow period, bulding to 1 1/2 inch es. Very weak surface blow at the start of the final flow period, building to 5 1/2 inches. Times: 5, 45, 60, 90.**

RECOVERY

Feet	Description	Gas	Oil	Water	Mud
60	Very slight (trace) oil cut mud	0% 0ft	trace	0% 0ft	100%60ft

DST Fluids **0**



	Date	Time	Pressure	Temp	
IH	10/1/2008 1:32:15 PM	1.8375	1571.051	95.103	Initial Hydro-static
IF1	10/1/2008 1:36:30 PM	1.908333	17.84	95.379	Initial Flow (1)
IF2	10/1/2008 1:41:30 PM	1.991667	22.2	95.642	Initial Flow (2)
IS	10/1/2008 2:26:15 PM	2.7375	711.929	96.923	Initial Shut-In
FF1	10/1/2008 2:26:45 PM	2.745833	23.849	96.866	Final Flow (1)
FF2	10/1/2008 3:26:45 PM	3.745833	42.699	98.312	Final Flow (2)
FS	10/1/2008 4:56:30 PM	5.241667	594.567	99.297	Final Shut-In
FH	10/1/2008 5:00:45 PM	5.3125	1564.647	99.43	Final Hydro-static

GAS FLOWS

Min Into IFP Min Into FFP Gas Flows Pressure Choke

Company **DaMar Resources, Inc.**
 Address **234 W. 11th, Ste A, Box 70**
 CSZ **Hays, KS 67601**
 Attn. **Jim Musgrove**

Lease Name **Huser**
 Lease # **1**
 Legal Desc **NE-SE-NW-SW** Job Ticket **2060**
 Section **16** Range **16W**
 Township **14S**
 County **Ellis** State **KS**
 Drilling Cont **L.D. Drilling, Inc. #1**

Comments

GENERAL INFORMATION

Test # **5** Test Date **10/2/2008**
 Tester **Tim Venters**
 Test Type **Straddle**
Successful Test
 # of Packers **3.0** Packer Size **6 3/4**

Mud Type **Gel Chem**
 Mud Weight **9.3** Viscosity **46.0**
 Filtrate **10.0** Chlorides **10000**

Drill Collar Len **0**
 Wght Pipe Len **0**

Formation **Arbuckle**
 Interval Top **3407.0** Bottom **3454.0**
 Anchor Len Below **47.0** Between **44.0**
 Total Depth **3500.0**

Blow Type **Strong blow throughout the intial flow period, reaching the bottom of the bucket in 2 minutes. Very weak surface blow back during the initial shut-in period, l asting about 10 minutes. Strong blow throughout the final flow period, reaching the bottom of the bucket in 1 1/2 minutes. Times: 5, 47, 60, 90.**

Chokes **3/4** Hole Size **7 7/8**
 Top Recorder # **W1119**
 Mid Recorder # **13310**
 Bott Recorder # **13565**

Mileage **36** Approved By
 Standby Time **0**
 Extra Equipmnt **Extra Packer & Cir. Pin**
 Time on Site **12:30 PM**
 Tool Picked Up **2:15 PM**
 Tool Layed Dwn **9:25 PM**

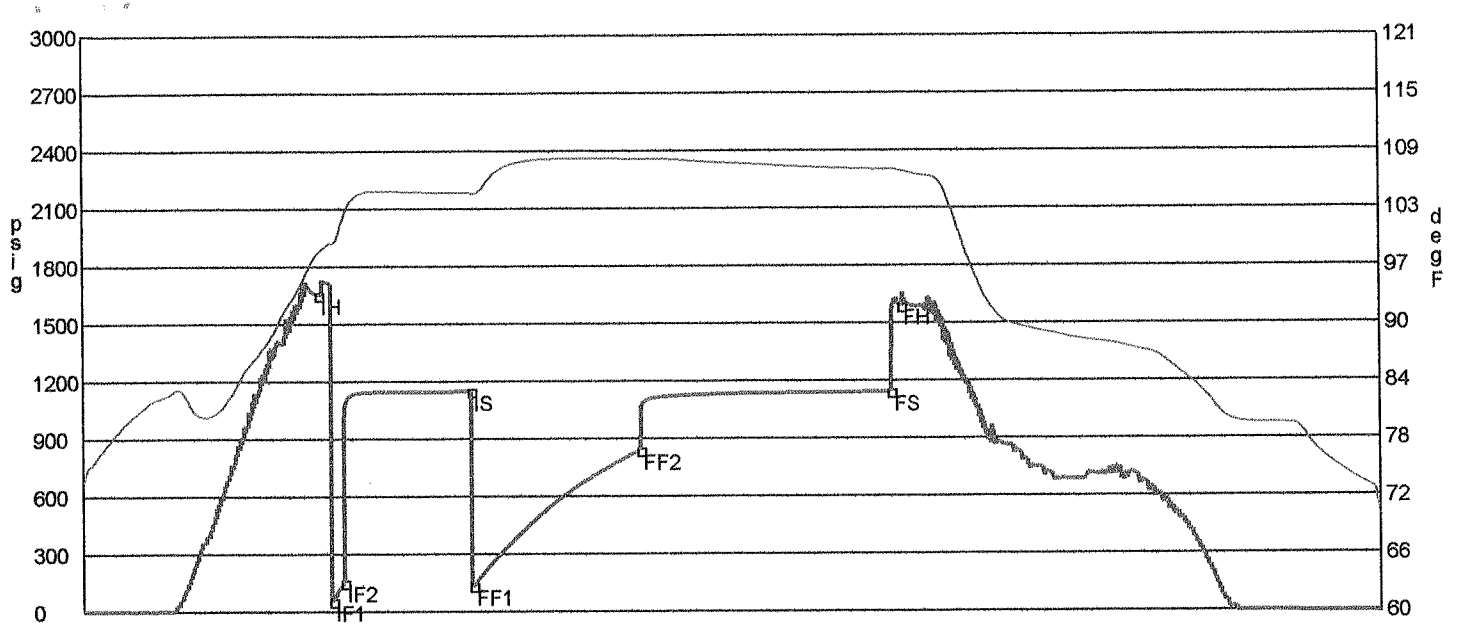
Elevation **1898.00** Kelley Bushings **1902.00**

Start Date/Time **10/2/2008 1:46 PM**
 End Date/Time **10/2/2008 9:33 PM**

RECOVERY

Feet	Description	Gas	Oil	Water	Mud
35	Very slight (trace) oil, slight water cut mud	0% 0ft	trace	3% 1ft	97% 34ft
250	Very slight water cut mud	0% 0ft	0% 0ft	5% 12.5ft	95% 237.5ft
60	Water cut mud	0% 0ft	0% 0ft	23% 13.8ft	77% 46.2ft
65	Very heavy mud cut water	0% 0ft	0% 0ft	53% 34.4ft	47% 30.6ft
1360	Slight mud cut water	0% 0ft	0% 0ft	96% 1305.6ft	4% 54.4ft
65	Mud cut water	0% 0ft	0% 0ft	77% 50.1ft	23% 15ft
60	Slight water cut mud	0% 0ft	0% 0ft	7% 4.2ft	93% 55.8ft

DST Fluids **0**



	Date	Time	Pressure	Temp	
IH	10/2/2008 3:09:00 PM	1.383333	1652.663	97.993	Initial Hydro-static
IF1	10/2/2008 3:14:00 PM	1.466667	54.619	99.051	Initial Flow (1)
IF2	10/2/2008 3:18:00 PM	1.533333	152.096	101.55	Initial Flow (2)
IS	10/2/2008 4:04:15 PM	2.304167	1146.833	104.452	Initial Shut-In
FF1	10/2/2008 4:04:45 PM	2.3125	133.237	104.332	Final Flow (1)
FF2	10/2/2008 5:05:15 PM	3.320833	838.066	107.948	Final Flow (2)
FS	10/2/2008 6:35:00 PM	4.816667	1140.633	106.768	Final Shut-In
FH	10/2/2008 6:38:30 PM	4.875	1589.262	106.654	Final Hydro-static

GAS FLOWS

Min Into IFP Min Into FFP Gas Flows Pressure Choke