

**TRILOBITE  
TESTING, INC.**

## DRILL STEM TEST REPORT

Prepared For: **Oil Producers Inc of Kansas**

1710 Waterfront Parkway  
Wichita KS 67206

ATTN: John Wier

**8 14S 17W Ellis KS**

**#4 'T' Lang**

Start Date: 2006.10.18 @ 19:50:42

End Date: 2006.10.19 @ 03:48:36

Job Ticket #: 25901                      DST #: 1

Trilobite Testing, Inc

PO Box 362 Hays, KS 67601

ph: 785-625-4778 fax: 785-625-5620



**TRILOBITE  
TESTING, INC**

## DRILL STEM TEST REPORT

Oil Producers Inc of Kansas

**#4 'T' Lang**

1710 Waterfront Parkway  
Wichita KS 67206

**8 14S 17W Ellis KS**

Job Ticket: 25901

**DST#: 1**

ATTN: John Wier

Test Start: 2006.10.18 @ 19:50:42

### GENERAL INFORMATION:

Formation: **Arbuckle**

Deviated: No Whipstock: ft (KB)

Time Tool Opened: 21:56:07

Time Test Ended: 03:48:36

Test Type: Conventional Bottom Hole

Tester: Paul Simpson

Unit No: 29

Interval: **3503.00 ft (KB) To 3560.00 ft (KB) (TVD)**

Total Depth: 3560.00 ft (KB) (TVD)

Hole Diameter: 7.88 inches Hole Condition: Good

Reference Elevations: 2010.00 ft (KB)

2005.00 ft (CF)

KB to GR/CF: 5.00 ft

**Serial #: 6753** Inside

Press@RunDepth: 234.24 psig @ 3505.01 ft (KB)

Start Date: 2006.10.18

End Date:

2006.10.19

Capacity: 7000.00 psig

Last Calib.: 2006.03.19

Start Time: 19:50:42

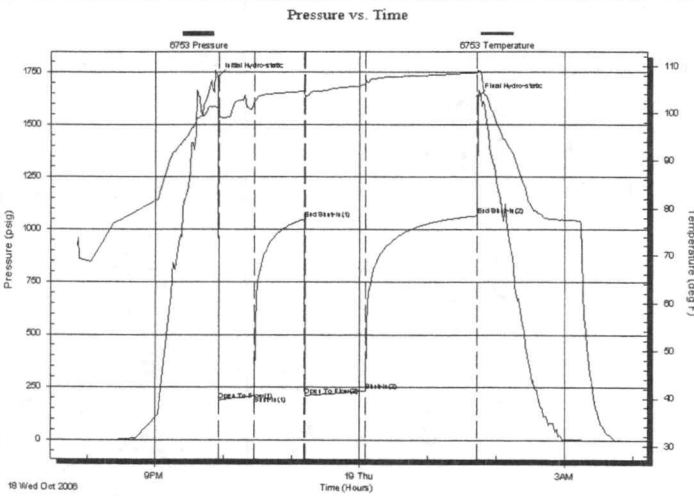
End Time:

03:48:36

Time On Btm: 2006.10.18 @ 21:55:37

Time Off Btm: 2006.10.19 @ 01:43:37

TEST COMMENT: IF Surface blow building to 4.5 "  
FF Surface blow building to 4 "



### PRESSURE SUMMARY

Time (Min.)	Pressure (psig)	Temp (deg F)	Annotation
0	1727.30	101.16	Initial Hydro-static
1	185.34	99.01	Open To Flow (1)
32	208.37	102.63	Shut-In (1)
76	1050.00	104.65	End Shut-In (1)
77	210.38	103.39	Open To Flow (2)
130	234.24	106.26	Shut-In (2)
228	1067.56	108.52	End Shut-In (2)
228	1632.97	108.96	Final Hydro-static

### Recovery

Length (ft)	Description	Volume (bbl)
350.00	MCO 50%O 50%M	2.64
130.00	HOCM 30%O 70%M	1.82
30.00	Mud w/Oil specks	0.42

### Gas Rates

	Choke (inches)	Pressure (psig)	Gas Rate (Mcf/d)



**TRILOBITE  
TESTING, INC**

## DRILL STEM TEST REPORT

**TOOL DIAGRAM**

Oil Producers Inc of Kansas

**#4 'T' Lang**

1710 Waterfront Parkway  
Wichita KS 67206

**8 14S 17W Ellis KS**

Job Ticket: 25901

**DST#: 1**

ATTN: John Wier

Test Start: 2006.10.18 @ 19:50:42

### Tool Information

Drill Pipe:	Length: 3238.00 ft	Diameter: 3.80 inches	Volume: 45.42 bbl	Tool Weight:	2500.00 lb
Heavy Wt. Pipe:	Length: 0.00 ft	Diameter: 2.70 inches	Volume: 0.00 bbl	Weight set on Packer:	20000.00 lb
Drill Collar:	Length: 249.00 ft	Diameter: 2.25 inches	Volume: 1.22 bbl	Weight to Pull Loose:	54000.00 lb
			<u>Total Volume: 46.64 bbl</u>	Tool Chased	ft
Drill Pipe Above KB:	5.00 ft			String Weight: Initial	52000.00 lb
Depth to Top Packer:	3503.00 ft			Final	52000.00 lb
Depth to Bottom Packer:	ft				
Interval between Packers:	57.02 ft				
Tool Length:	78.02 ft				
Number of Packers:	2	Diameter: 6.75 inches			
Tool Comments:					

Tool Description	Length (ft)	Serial No.	Position	Depth (ft)	Accum. Lengths
Change Over Sub	1.00			3483.00	
Shut In Tool	5.00			3488.00	
Hydraulic tool	5.00			3493.00	
Packer	5.00			3498.00	21.00 Bottom Of Top Packer
Packer	5.00			3503.00	
Stubb	1.00			3504.00	
Perforations	1.00			3505.00	
Recorder	0.01	6753	Inside	3505.01	
Perforations	20.00			3525.01	
Change Over Sub	1.00			3526.01	
Recorder	0.01	13534	Outside	3526.02	
Drill Pipe	30.00			3556.02	
Change Over Sub	1.00			3557.02	
Bullnose	3.00			3560.02	57.02 Bottom Packers & Anchor

**Total Tool Length: 78.02**



**TRILOBITE  
TESTING, INC**

## DRILL STEM TEST REPORT

**FLUID SUMMARY**

Oil Producers Inc of Kansas

**#4 'T' Lang**

1710 Waterfront Parkway  
Wichita KS 67206

**8 14S 17W Ellis KS**

Job Ticket: 25901

**DST#: 1**

ATTN: John Wier

Test Start: 2006.10.18 @ 19:50:42

### Mud and Cushion Information

Mud Type: Gel Chem

Cushion Type:

Oil API:

deg API

Mud Weight: 9.00 lb/gal

Cushion Length:

ft

Water Salinity:

ppm

Viscosity: 46.00 sec/qt

Cushion Volume:

bbbl

Water Loss: 9.58 in<sup>3</sup>

Gas Cushion Type:

Resistivity: ohm.m

Gas Cushion Pressure:

psig

Salinity: ppm

Filter Cake: inches

### Recovery Information

Recovery Table

Length ft	Description	Volume bbl
350.00	MCO 50%O 50%M	2.641
130.00	HOCM 30%O 70%M	1.824
30.00	Mud w/Oil specks	0.421

Total Length: 510.00 ft      Total Volume: 4.886 bbl

Num Fluid Samples: 0

Num Gas Bombs: 0

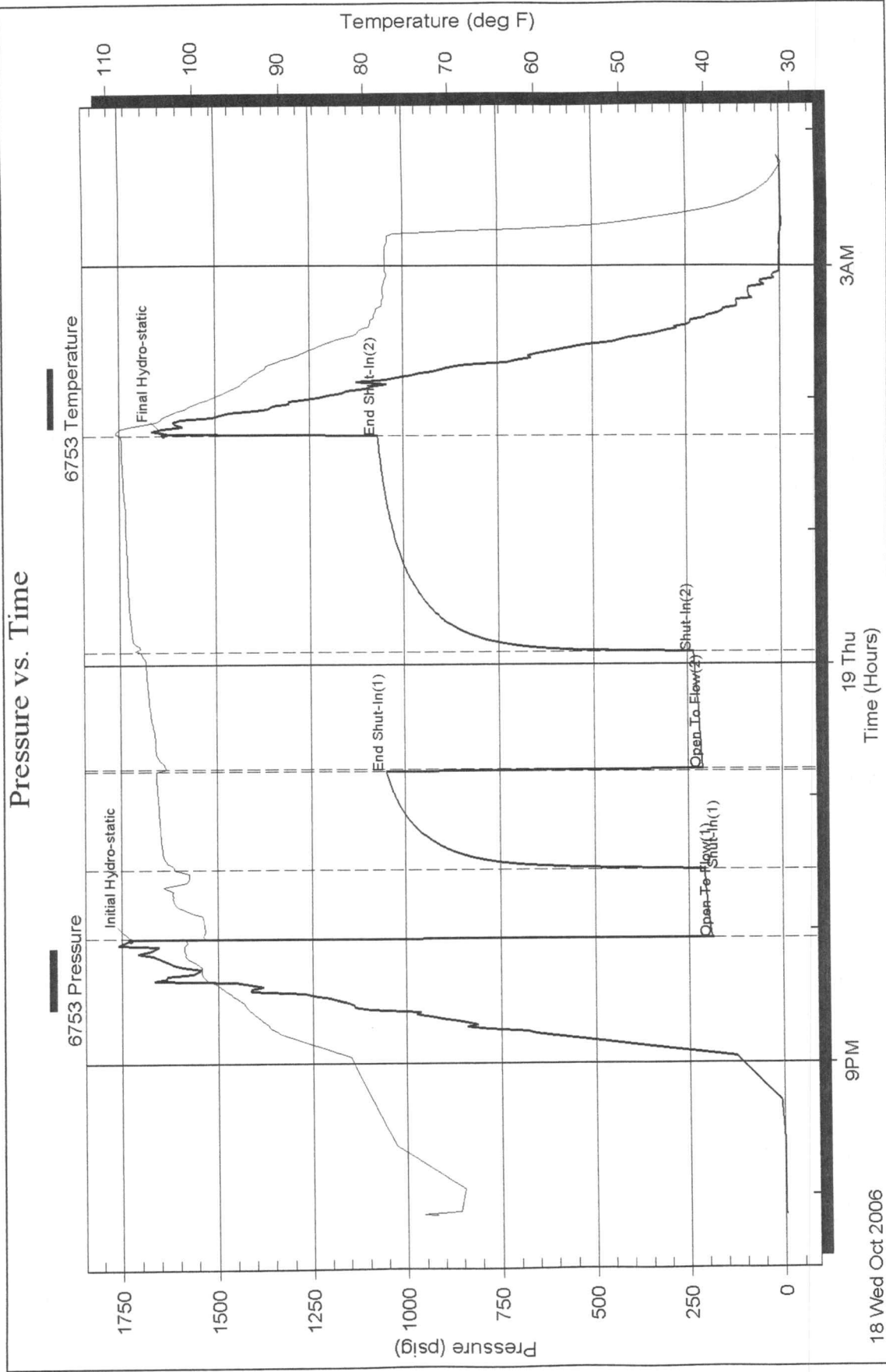
Serial #:

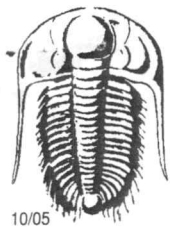
Laboratory Name:

Laboratory Location:

Recovery Comments:

### Pressure vs. Time





# TRILOBITE TESTING INC.

P.O. Box 362 • Hays, Kansas 67601

25901

9399

## Test Ticket

Well Name & No. #4 'T' Lang Test No. 1 Date 10/18/06  
 Company Oil Producers Int'l Kansas Zone Tested Arbuckle  
 Address 1710 Waterfront Parkway Wichita, KS 67206 Elevation 2010 KB 2005 GL  
 Co. Rep / Geo. Jon Christensen Rig Mallard  
 Location: Sec. 8 Twp. 14s Rge. 17w Co. 611B State Ks  
 Comment: \_\_\_\_\_ Release date / time: \_\_\_\_\_

Interval Tested 3503 - 3560 Initial Str Wt./Lbs. 42500 Unseated Str Wt/Lbs. 52,000  
 Anchor Length 57 Wt. Set Lbs. 20,000 Wt. Pulled Loose/Lbs. 54,000  
 Top Packer Depth 3498 Tool Weight 2500  
 Bottom Packer Depth 3503 Hole Size 7 7/8" Rubber Size 6 3/4"  
 Total Depth \_\_\_\_\_ Wt. Pipe Run \_\_\_\_\_ Drill Collar Run 249  
 Mud Wt. 9.2 LCM \_\_\_\_\_ Vis. 46 WL 916 Drill Pipe Size 4 1/2" H Ft. Run 3238  
 Blow Description DF - surface blow building to 4 1/2"  
FF - surface blow building to 4"

Recovery - Total Feet 510 GIP \_\_\_\_\_ Ft. in DC 249 Ft. in DP 261  
 Rec. 350 Feet of MCO %gas 50 %oil \_\_\_\_\_ %water 50 %mud \_\_\_\_\_  
 Rec. 130 Feet of HOCM %gas 30 %oil \_\_\_\_\_ %water 70 %mud \_\_\_\_\_  
 Rec. 30 Feet of mud w oil speck %gas \_\_\_\_\_ %oil \_\_\_\_\_ %water \_\_\_\_\_ %mud \_\_\_\_\_  
 Rec. \_\_\_\_\_ Feet of \_\_\_\_\_ %gas \_\_\_\_\_ %oil \_\_\_\_\_ %water \_\_\_\_\_ %mud \_\_\_\_\_  
 Rec. \_\_\_\_\_ Feet of \_\_\_\_\_ %gas \_\_\_\_\_ %oil \_\_\_\_\_ %water \_\_\_\_\_ %mud \_\_\_\_\_  
 BHT 108 °F Gravity \_\_\_\_\_ °API D @ \_\_\_\_\_ °F Corrected Gravity \_\_\_\_\_ °API  
 RW \_\_\_\_\_ @ \_\_\_\_\_ °F Chlorides \_\_\_\_\_ ppm Recovery \_\_\_\_\_ Chlorides \_\_\_\_\_ ppm System

	AK-1	Alpine	Recorder No.	Test
(A) Initial Hydrostatic Mud		<u>172</u> PSI	<u>6753</u>	<u>1100</u>
(B) First Initial Flow Pressure		<u>185</u> PSI	(depth) <u>3505</u>	Jars _____
(C) First Final Flow Pressure		<u>208</u> PSI	Recorder No. <u>13534</u>	Safety Jt. _____
(D) Initial Shut-In Pressure		<u>1050</u> PSI	(depth) <u>3526</u>	Circ Sub _____
(E) Second Initial Flow Pressure		<u>210</u> PSI	Recorder No. _____	Sampler _____
(F) Second Final Flow Pressure		<u>234</u> PSI	(depth) _____	Straddle _____
(G) Final Shut-In Pressure		<u>1067</u> PSI	<b>Initial Opening</b> <u>30</u>	Ext. Packer _____
(Q) Final Hydrostatic Mud		<u>1632</u> PSI	Initial Shut-In <u>45</u>	Shale Packer _____
			Final Flow <u>60</u>	Ruined Packer _____
			Final Shut-In <u>90</u>	Mileage <u>6 RT 750</u>
			<b>T-On Location</b> <u>1845</u>	Sub Total: _____
			T-Started <u>1950</u>	Std. By _____
			T-Open <u>2154</u>	Acc. Chg: <u>\$1107.50</u>
			T-Pulled <u>0739</u>	Other: _____
			T-Out <u>0348</u>	Total: _____

TRILOBITE TESTING INC. SHALL NOT BE LIABLE FOR DAMAGED OF ANY KIND OF THE PROPERTY OR PERSONNEL OF THE ONE FOR WHOM A TEST IS MADE, OR FOR ANY LOSS SUFFERED OR SUSTAINED, DIRECTLY OR INDIRECTLY, THROUGH THE USE OF ITS EQUIPMENT, OR ITS STATEMENTS OR OPINION CONCERNING THE RESULTS OF ANY TEST. TOOLS LOST OR DAMAGED IN THE HOLE SHALL BE PAID FOR AT COST BY THE PARTY FOR WHOM THE TEST IS MADE.

Approved By [Signature]  
 Our Representative Paul Simpson

**CHART PAGE**

This is a photocopy of the actual AK-1 recorder chart.

