

**TRILOBITE
TESTING, INC**

DRILL STEM TEST REPORT

FLUID SUMMARY

Berexco
PO Box 20380
Wichita, Ks
67208
ATTN: Bryan Bynog

Christina A6
10-14-17/Ellis
Job Ticket: 39531 **DST#: 1**
Test Start: 2010.08.01 @ 00:28:26

Mud and Cushion Information

Mud Type: Gel Chem	Cushion Type:	Oil API: 30 deg API
Mud Weight: 9.00 lb/gal	Cushion Length: ft	Water Salinity: 28000 ppm
Viscosity: 52.00 sec/qt	Cushion Volume: bbl	
Water Loss: 9.07 in ³	Gas Cushion Type:	
Resistivity: ohm.m	Gas Cushion Pressure: psig	
Salinity: 6000.00 ppm		
Filter Cake: inches		

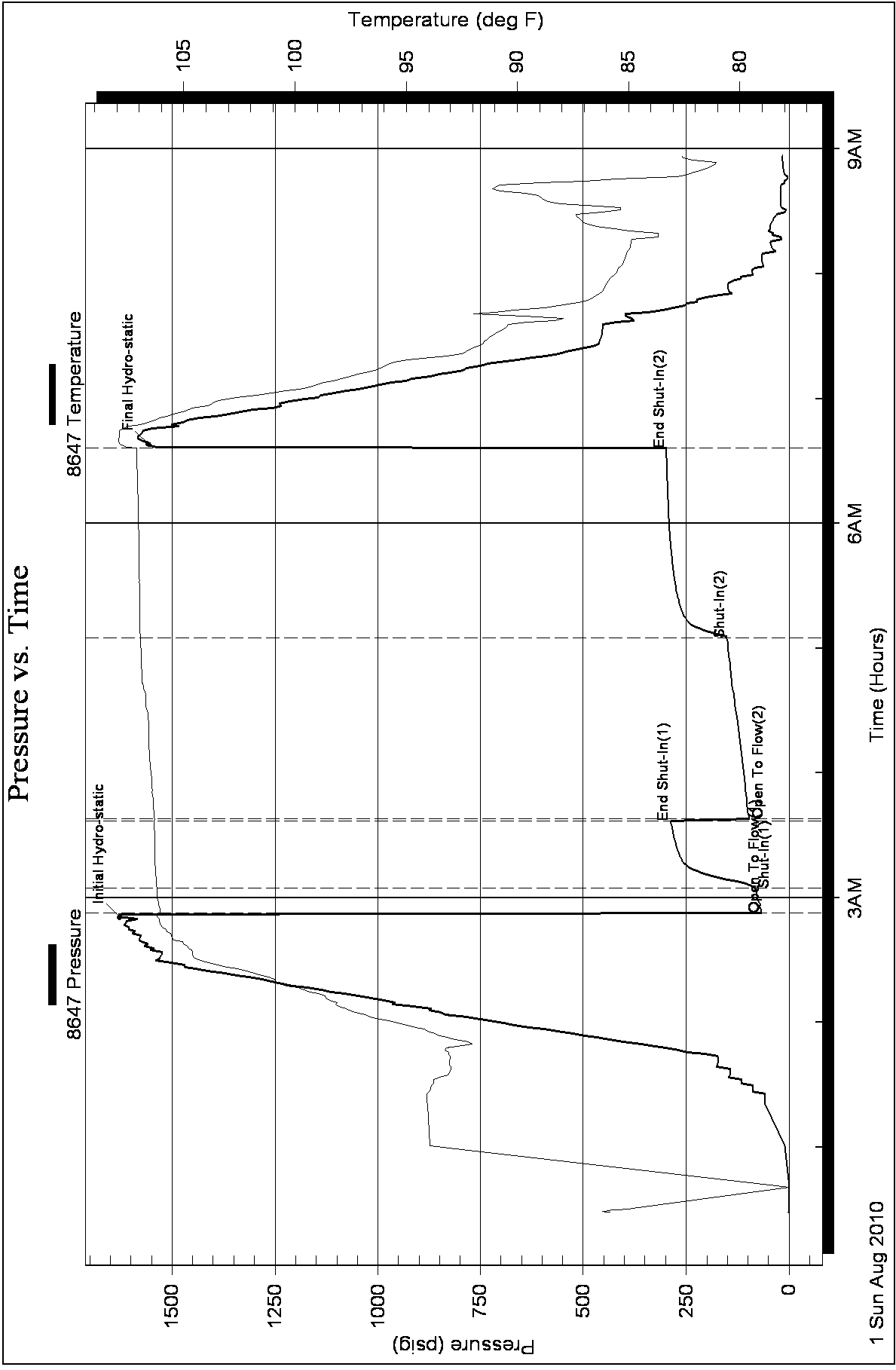
Recovery Information

Recovery Table

Length ft	Description	Volume bbl
125.00	SGOCWM 15%G, 5%O, 25%W, 55%M	0.615
125.00	GOCM 30%G, 30%O, 40%M	0.615
30.00	FREE OIL 95%O, 5%M	0.148
0.00	1830 GIP	0.000

Total Length: 280.00 ft Total Volume: 1.378 bbl
 Num Fluid Samples: 0 Num Gas Bombs: 0 Serial #:
 Laboratory Name: Laboratory Location:
 Recovery Comments:

Pressure vs. Time





TRILOBITE TESTING, INC.

DRILL STEM TEST REPORT

Berexco
 PO Box 20380
 Wichita, Ks
 67208
 ATTN: Bryan Bynog

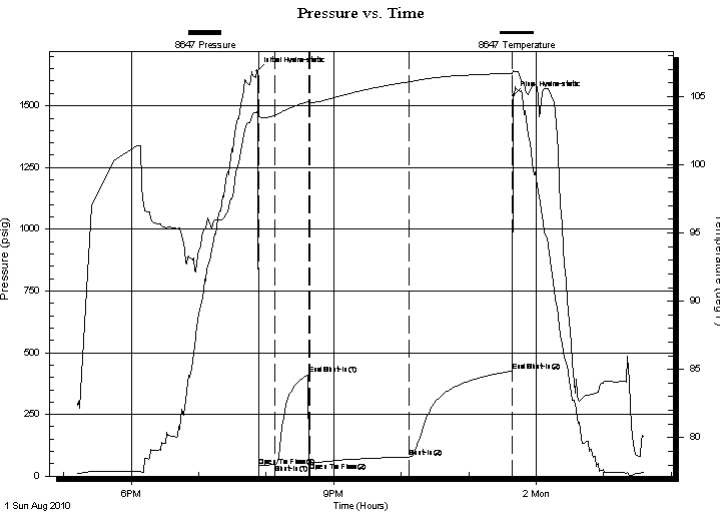
Christina A6
10-14-17/Ellis
 Job Ticket: 39532 **DST#: 2**
 Test Start: 2010.08.01 @ 17:12:27

GENERAL INFORMATION:

Formation: **LKC "E-G"**
 Deviated: No Whipstock: ft (KB)
 Time Tool Opened: 19:53:22
 Time Test Ended: 01:36:51
Interval: 3340.00 ft (KB) To 3380.00 ft (KB) (TVD)
 Total Depth: 3380.00 ft (KB) (TVD)
 Hole Diameter: 7.88 inches Hole Condition:
 Test Type: Conventional Bottom Hole
 Tester: Brian Fairbank
 Unit No: 41
 Reference Elevations: 2021.00 ft (KB)
 2010.00 ft (CF)
 KB to GR/CF: 11.00 ft

Serial #: 8647 Inside
 Press @ Run Depth: 77.75 psig @ 3343.00 ft (KB) Capacity: 8000.00 psig
 Start Date: 2010.08.01 End Date: 2010.08.02 Last Calib.: 2010.08.02
 Start Time: 17:12:27 End Time: 01:36:51 Time On Btm: 2010.08.01 @ 19:51:52
 Time Off Btm: 2010.08.01 @ 23:39:51

TEST COMMENT: IFP - weak blow throughout 1/4" - 3"
 ISI - no blow back
 FFP - BOB 53 min.
 FSI - 1/4" blow back - died 17 min.



PRESSURE SUMMARY

Time (Min.)	Pressure (psig)	Temp (deg F)	Annotation
0	1639.80	103.85	Initial Hydro-static
2	40.34	103.53	Open To Flow (1)
16	47.15	103.62	Shut-In(1)
46	412.10	104.62	End Shut-In(1)
47	55.24	104.52	Open To Flow (2)
135	77.75	106.06	Shut-In(2)
227	425.47	106.70	End Shut-In(2)
228	1541.42	106.83	Final Hydro-static

Recovery

Length (ft)	Description	Volume (bbl)
60.00	MW 50%W, 50%M	0.30
35.00	SGO & WCM 15%G, 5%O, 10%W, 70%M	0.17
5.00	FREE OIL 95%O, 5%M	0.02
0.00	175' GIP	0.00

Gas Rates

	Choke (inches)	Pressure (psig)	Gas Rate (Mcf/d)



**TRILOBITE
TESTING, INC.**

DRILL STEM TEST REPORT

FLUID SUMMARY

Berexco
PO Box 20380
Wichita, Ks
67208
ATTN: Bryan Bynog

Christina A6
10-14-17/Ellis
Job Ticket: 39532 **DST#: 2**
Test Start: 2010.08.01 @ 17:12:27

Mud and Cushion Information

Mud Type: Gel Chem	Cushion Type:	Oil API: 33 deg API
Mud Weight: 9.00 lb/gal	Cushion Length: ft	Water Salinity: 36000 ppm
Viscosity: 46.00 sec/qt	Cushion Volume: bbl	
Water Loss: 9.17 in ³	Gas Cushion Type:	
Resistivity: ohm.m	Gas Cushion Pressure: psig	
Salinity: 7200.00 ppm		
Filter Cake: inches		

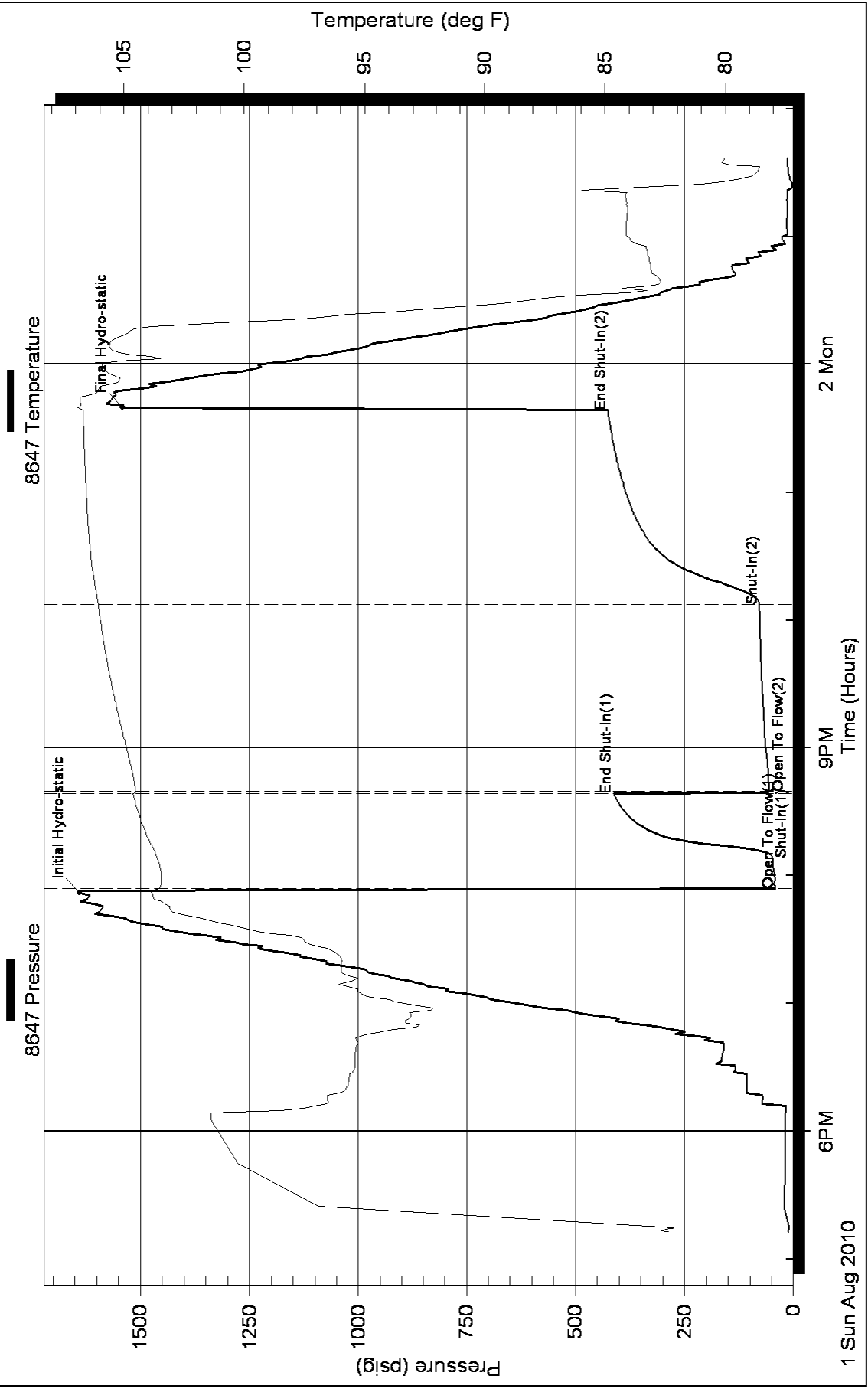
Recovery Information

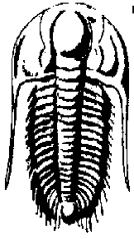
Recovery Table

Length ft	Description	Volume bbl
60.00	MW 50%W, 50%M	0.295
35.00	SGO & WCM 15%G, 5%O, 10%W, 70%M	0.172
5.00	FREE OIL 95%O, 5%M	0.025
0.00	175' GIP	0.000

Total Length: 100.00 ft Total Volume: 0.492 bbl
Num Fluid Samples: 0 Num Gas Bombs: 0 Serial #:
Laboratory Name: Laboratory Location:
Recovery Comments:

Pressure vs. Time





**TRILOBITE
TESTING, INC.**

DRILL STEM TEST REPORT

Berexco
PO Box 20380
Wichita, Ks
67208
ATTN: Bryan Bynog

Christina A6
10-14-17/Ellis
Job Ticket: 39533 **DST#: 3**
Test Start: 2010.08.02 @ 11:47:28

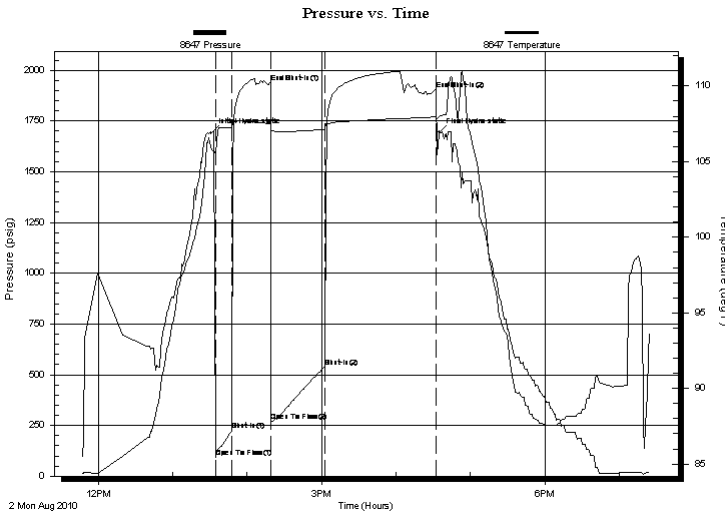
GENERAL INFORMATION:

Formation: **LKC "I-J"**
Deviated: No Whipstock: ft (KB) Test Type: Conventional Bottom Hole
Time Tool Opened: 13:34:23 Tester: Brian Fairbank
Time Test Ended: 19:24:52 Unit No: 41
Interval: 3427.00 ft (KB) To 3477.00 ft (KB) (TVD) Reference Elevations: 2021.00 ft (KB)
Total Depth: 3477.00 ft (KB) (TVD) 2010.00 ft (CF)
Hole Diameter: 7.88 inches Hole Condition: KB to GR/CF: 11.00 ft

Serial #: 8647 Inside
Press @ Run Depth: 539.73 psig @ 3432.00 ft (KB) Capacity: 8000.00 psig
Start Date: 2010.08.02 End Date: 2010.08.02 Last Calib.: 2010.08.02
Start Time: 11:47:28 End Time: 19:24:52 Time On Btm: 2010.08.02 @ 13:31:23
Time Off Btm: 2010.08.02 @ 16:34:52

TEST COMMENT: IFP - BOB 2 1/2 min.
ISI - no blow back
FFP - BOB 4 min.
FSI - BOB 75 min.

PRESSURE SUMMARY



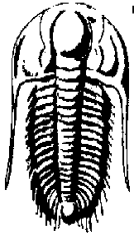
Time (Min.)	Pressure (psig)	Temp (deg F)	Annotation
0	1691.40	105.77	Initial Hydro-static
3	93.64	105.55	Open To Flow (1)
17	224.06	107.22	Shut-In(1)
48	1940.33	107.53	End Shut-In(1)
48	268.91	107.01	Open To Flow (2)
92	539.73	107.14	Shut-In(2)
181	1903.57	107.96	End Shut-In(2)
184	1692.79	108.00	Final Hydro-static

Recovery

Length (ft)	Description	Volume (bbl)
560.00	GMW 10%G, 85%W, 5%M	3.24
250.00	SGM & OCW 10%G, 10%O, 75%W, 5%M	1.85
400.00	GM & OCW 35%G, 25%O, 30%W, 10%M	2.96
0.00	435' GIP	0.00

Gas Rates

Choke (inches)	Pressure (psig)	Gas Rate (Mcf/d)



**TRILOBITE
TESTING, INC.**

DRILL STEM TEST REPORT

FLUID SUMMARY

Berexco
PO Box 20380
Wichita, Ks
67208
ATTN: Bryan Bynog

Christina A6
10-14-17/Ellis
Job Ticket: 39533 **DST#: 3**
Test Start: 2010.08.02 @ 11:47:28

Mud and Cushion Information

Mud Type: Gel Chem	Cushion Type:	Oil API:	deg API
Mud Weight: 9.00 lb/gal	Cushion Length: ft	Water Salinity:	30000 ppm
Viscosity: 52.00 sec/qt	Cushion Volume: bbl		
Water Loss: 9.96 in ³	Gas Cushion Type:		
Resistivity: ohm.m	Gas Cushion Pressure: psig		
Salinity: 9000.00 ppm			
Filter Cake: inches			

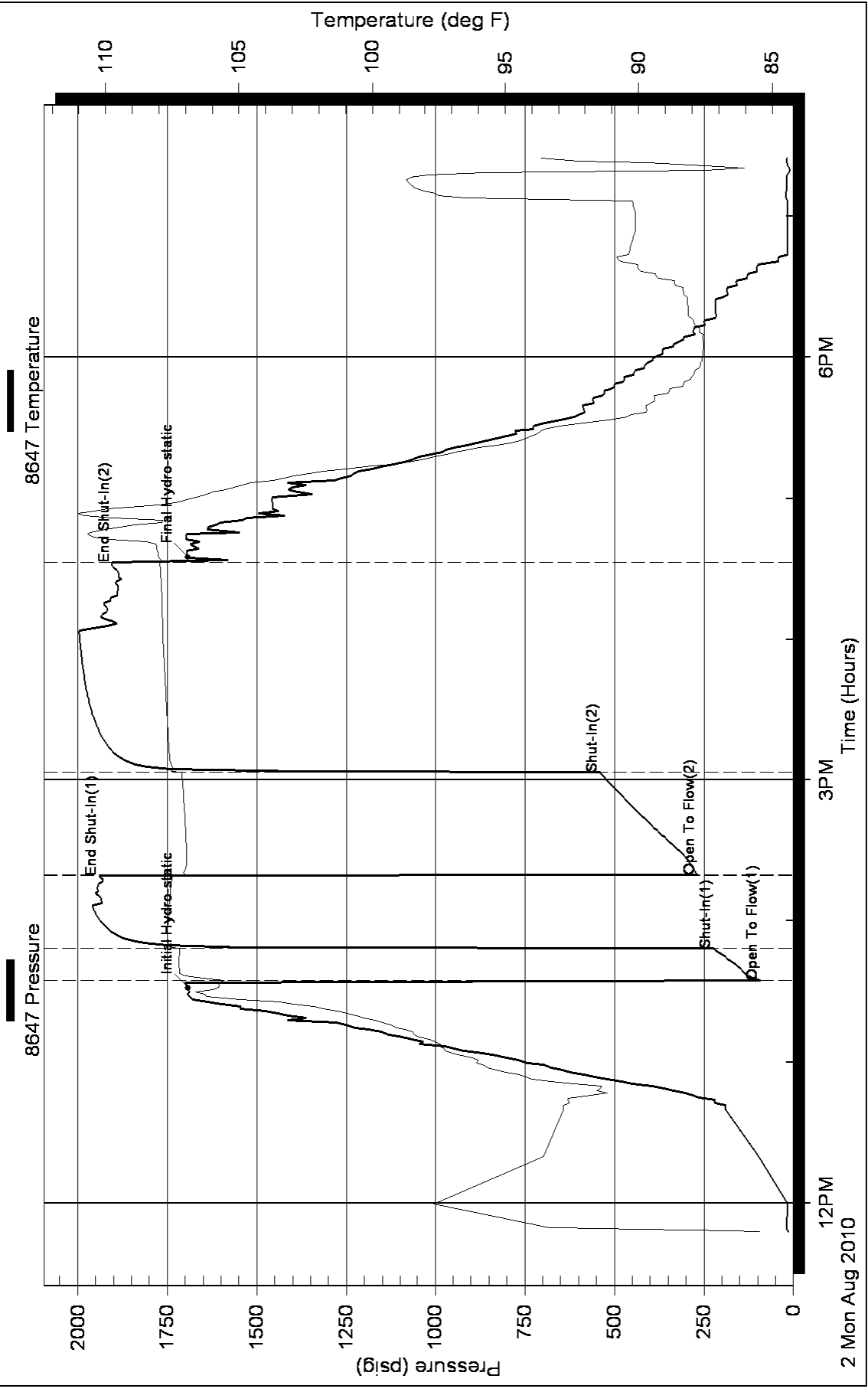
Recovery Information

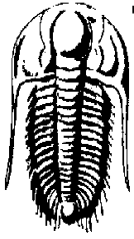
Recovery Table

Length ft	Description	Volume bbl
560.00	GMW 10%G, 85%W, 5%M	3.240
250.00	SGM & OCW 10%G, 10%O, 75%W, 5%M	1.850
400.00	GM & OCW 35%G, 25%O, 30%W, 10%M	2.960
0.00	435' GIP	0.000

Total Length: 1210.00 ft Total Volume: 8.050 bbl
Num Fluid Samples: 0 Num Gas Bombs: 0 Serial #:
Laboratory Name: Laboratory Location:
Recovery Comments:

Pressure vs. Time





TRILOBITE TESTING, INC.

DRILL STEM TEST REPORT

Berexco
 PO Box 20380
 Wichita, Ks
 67208
 ATTN: Bryan Bynog

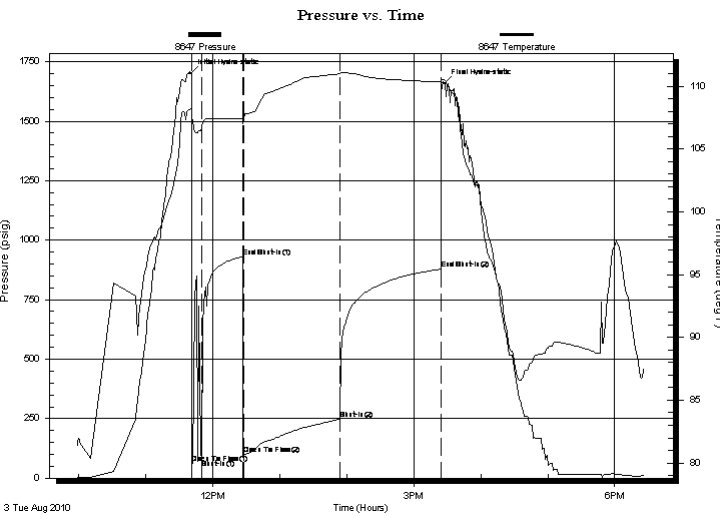
Christina A6
10-14-17/Ellis
 Job Ticket: 39534 **DST#: 4**
 Test Start: 2010.08.03 @ 09:58:49

GENERAL INFORMATION:

Formation: **Arbuckle**
 Deviated: No Whipstock: ft (KB)
 Time Tool Opened: 11:41:14
 Time Test Ended: 18:27:13
 Interval: **3533.00 ft (KB) To 3568.00 ft (KB) (TVD)**
 Total Depth: 3568.00 ft (KB) (TVD)
 Hole Diameter: 7.88 inches Hole Condition:
 Test Type: Conventional Bottom Hole
 Tester: Brian Fairbank
 Unit No: 41
 Reference Elevations: 2021.00 ft (KB)
 2010.00 ft (CF)
 KB to GR/CF: 11.00 ft

Serial #: 8647 Inside
 Press @ Run Depth: 249.71 psig @ 3540.00 ft (KB) Capacity: 8000.00 psig
 Start Date: 2010.08.03 End Date: 2010.08.03 Last Calib.: 2010.08.03
 Start Time: 09:58:49 End Time: 18:27:13 Time On Btm: 2010.08.03 @ 11:39:44
 Time Off Btm: 2010.08.03 @ 15:26:43

TEST COMMENT: IFP - weak to good blow 1" - 6"
 ISI - no blow back
 FFP - BOB 17 min.
 FSI - no blow back



PRESSURE SUMMARY

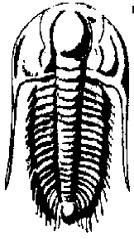
Time (Min.)	Pressure (psig)	Temp (deg F)	Annotation
0	1701.13	108.20	Initial Hydro-static
2	61.76	107.50	Open To Flow (1)
10	77.30	106.72	Shut-In(1)
47	930.83	107.45	End Shut-In(1)
48	101.93	107.30	Open To Flow (2)
134	249.71	111.01	Shut-In(2)
225	878.51	110.36	End Shut-In(2)
227	1658.12	110.52	Final Hydro-static

Recovery

Length (ft)	Description	Volume (bbl)
250.00	GM & OW 30%G, 10%O, 55%W, 5%M	1.23
215.00	GO & MW 5%G, 10%O, 50%W, 35%M	1.31
75.00	SGOCMW 10%G, 5%O, 45%W, 40%M	0.55
2.00	MWO 80%O, 10%W, 10%M	0.01

Gas Rates

Choke (inches)	Pressure (psig)	Gas Rate (Mcf/d)



**TRILOBITE
TESTING, INC.**

DRILL STEM TEST REPORT

FLUID SUMMARY

Berexco
PO Box 20380
Wichita, Ks
67208
ATTN: Bryan Bynog

Christina A6
10-14-17/Ellis
Job Ticket: 39534 **DST#: 4**
Test Start: 2010.08.03 @ 09:58:49

Mud and Cushion Information

Mud Type: Gel Chem	Cushion Type:	Oil API:	deg API
Mud Weight: 8.00 lb/gal	Cushion Length: ft	Water Salinity:	30000 ppm
Viscosity: 59.00 sec/qt	Cushion Volume: bbl		
Water Loss: 8.76 in ³	Gas Cushion Type:		
Resistivity: ohm.m	Gas Cushion Pressure: psig		
Salinity: 6200.00 ppm			
Filter Cake: inches			

Recovery Information

Recovery Table

Length ft	Description	Volume bbl
250.00	GM & OW 30%G, 10%O, 55%W, 5%M	1.229
215.00	GO & MW 5%G, 10%O, 50%W, 35%M	1.308
75.00	SGOCMW 10%G, 5%O, 45%W, 40%M	0.555
2.00	MWO 80%O, 10%W, 10%M	0.015

Total Length: 542.00 ft Total Volume: 3.107 bbl
 Num Fluid Samples: 0 Num Gas Bombs: 0 Serial #:
 Laboratory Name: Laboratory Location:
 Recovery Comments:

Pressure vs. Time

