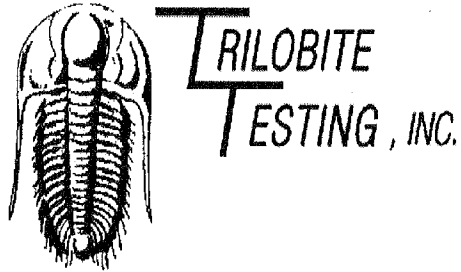


15-051-25501

30-14s-20w

KCC
MAY 2 2 2006
CONFIDENTIAL



KCC
MAY
CONFIDENTIAL

DRILL STEM TEST REPORT

Prepared For: **IA Operating Inc**

900 N Tyler Rd #14
Wichita Ks 67212

ATTN: Hal Porter

30-14-20-Ellis-Ks

Addie # 30-1

Start Date: 2006.03.12 @ 11:45:31

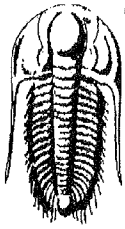
End Date: 2006.03.12 @ 18:52:46

Job Ticket #: 24757 DST #: 1

RECEIVED
MAY 23 2006
KCC WICHITA

Trilobite Testing, Inc
PO Box 362 Hays, KS 67601
ph: 785-625-4778 fax: 785-625-5620

IA Operating Inc
Addie # 30-1
30-14-20-Ellis-Ks
DST # 1
C
LKC
2006.03.12



**TRILOBITE
TESTING, INC.**

DRILL STEM TEST REPORT

IA Operating Inc
900 N Tyler Rd #14
Wichita Ks 67212
ATTN: Hal Porter

Addie # 30-1
30-14-20-Ellis-Ks
Job Ticket: 24757 **DST#: 1**
Test Start: 2006.03.12 @ 11:45:31

GENERAL INFORMATION:

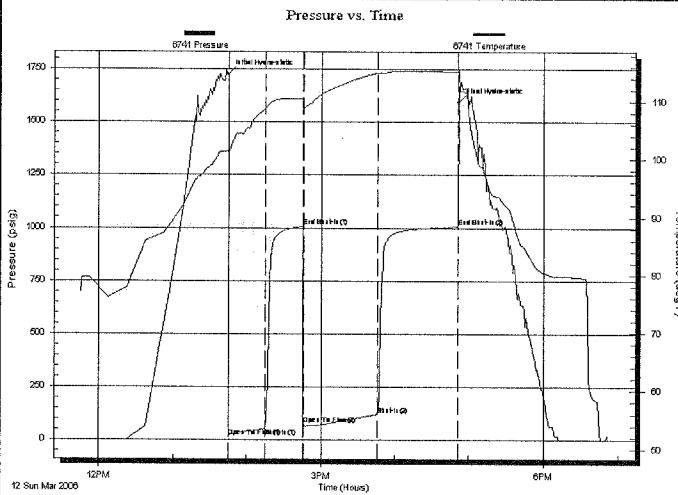
Formation: **C LKC**
 Deviated: **No Whipstock:** ft (KB)
 Time Tool Opened: 13:45:16
 Time Test Ended: 18:52:46
 Test Type: **Conventional Bottom Hole**
 Tester: **Dan Bangle**
 Unit No: **21**
 Interval: **3523.00 ft (KB) To 3555.00 ft (KB) (TVD)**
 Total Depth: **3555.00 ft (KB) (TVD)**
 Hole Diameter: **7.88 inches** Hole Condition: **Good**
 Reference Elevations: **2191.00 ft (KB)**
2186.00 ft (CF)
 KB to GR/CF: **5.00 ft**

Serial #: 6741

Inside

Press@RunDepth: 120.11 psig @ 3524.00 ft (KB) Capacity: 7000.00 psig
 Start Date: 2006.03.12 End Date: 2006.03.12 Last Calib.: 2006.03.12
 Start Time: 11:45:33 End Time: 18:52:46 Time On Btm: 2006.03.12 @ 13:45:01
 Time Off Btm: 2006.03.12 @ 16:52:01

TEST COMMENT: IF-Strong B-B in 10 min
 IS-Weak building to 1 1/4"
 FF-Strong B-B in 10 min
 FS-Weak building to 2"



PRESSURE SUMMARY

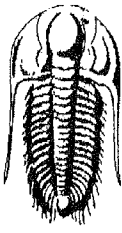
Time (Min.)	Pressure (psig)	Temp (deg F)	Annotation
0	1726.57	101.62	Initial Hydro-static
1	14.87	101.23	Open To Flow (1)
30	52.51	108.68	Shut-In(1)
60	1007.15	110.49	End Shut-In(1)
61	74.47	109.90	Open To Flow (2)
121	120.11	114.99	Shut-In(2)
187	1005.15	115.11	End Shut-In(2)
187	1595.59	115.49	Final Hydro-static

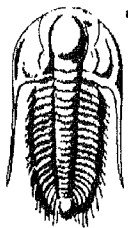
Recovery

Length (ft)	Description	Volume (bbl)
62.00	Wtr Rw .09 @ 85 = 70000ppm	0.60
124.00	CO	1.74
75.00	HMCO 80%o 20%m	1.05

Gas Rates

Choke (inches)	Pressure (psig)	Gas Rate (Mcf/d)

TRILOBITE TESTING, INC.		DRILL STEM TEST REPORT			TOOL DIAGRAM	
		IA Operating Inc			Addie # 30-1	
		900 N Tyler Rd #14 Wichita Ks 67212			30-14-20-Ellis-Ks	
		ATTN: Hal Porter			Job Ticket: 24757 DST#: 1	
					Test Start: 2006.03.12 @ 11:45:31	
Tool Information						
Drill Pipe:	Length: 3476.00 ft	Diameter: 3.80 inches	Volume: 48.76 bbl	Tool Weight:	2000.00 lb	
Heavy Wt. Pipe:	Length: 0.00 ft	Diameter: 0.00 inches	Volume: 0.00 bbl	Weight set on Packer:	25000.00 lb	
Drill Collar:	Length: 30.00 ft	Diameter: 2.25 inches	Volume: 0.15 bbl	Weight to Pull Loose:	50000.00 lb	
			<u>Total Volume: 48.91 bbl</u>	Tool Chased	0.00 ft	
Drill Pipe Above KB:	4.00 ft			String Weight: Initial	42000.00 lb	
Depth to Top Packer:	3523.00 ft			Final	43000.00 lb	
Depth to Bottom Packer:	ft					
Interval between Packers:	32.00 ft					
Tool Length:	53.00 ft					
Number of Packers:	2	Diameter: 6.75 inches				
Tool Comments:						
Tool Description						
	Length (ft)	Serial No.	Position	Depth (ft)	Accum. Lengths	
Change Over Sub	1.00			3503.00		
Shut In Tool	5.00			3508.00		
Hydraulic tool	5.00			3513.00		
Packer	5.00			3518.00	21.00	Bottom Of Top Packer
Packer	5.00			3523.00		
Stubb	1.00			3524.00		
Recorder	0.00	6741	Inside	3524.00		
Perforations	28.00			3552.00		
Recorder	0.00	13254	Outside	3552.00		
Bullnose	3.00			3555.00	32.00	Bottom Packers & Anchor
Total Tool Length:	53.00					



**TRILOBITE
TESTING, INC.**

DRILL STEM TEST REPORT

FLUID SUMMARY

IA Operating Inc
900 N Tyler Rd #14
Wichita Ks 67212

ATTN: Hal Porter

Addie # 30-1
30-14-20-Ellis-Ks
Job Ticket: 24757 **DST#: 1**
Test Start: 2006.03.12 @ 11:45:31

Mud and Cushion Information

Mud Type: Gel Chem	Cushion Type:	Oil API: 38 deg API
Mud Weight: 9.00 lb/gal	Cushion Length: ft	Water Salinity: 70000 ppm
Viscosity: 58.00 sec/qt	Cushion Volume: bbl	
Water Loss: 8.79 in ³	Gas Cushion Type:	
Resistivity: ohm.m	Gas Cushion Pressure: psig	
Salinity: 5500.00 ppm		
Filter Cake: inches		

Recovery Information

Recovery Table

Length ft	Description	Volume bbl
62.00	Wtr Rw .09 @ 85 = 70000ppm	0.596
124.00	CO	1.739
75.00	HMCO 80%o 20%m	1.052

Total Length: 261.00 ft Total Volume: 3.387 bbl
Num Fluid Samples: 0 Num Gas Bombs: 0 Serial #:
Laboratory Name: Laboratory Location:
Recovery Comments:

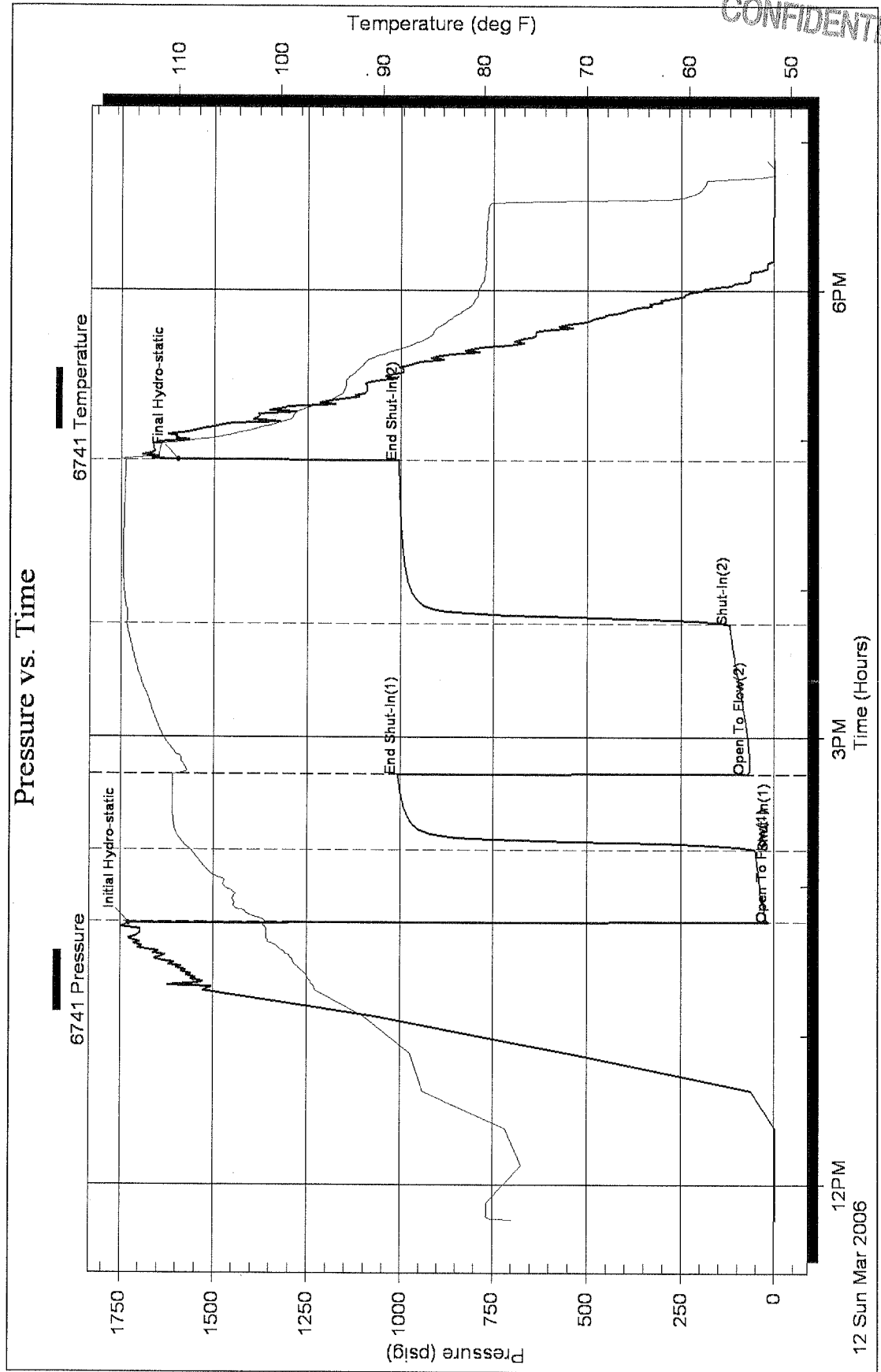
Serial #: 6741

Inside

IA Operating Inc

30-14-20-Ellis-Ks

DST Test Number: 1



KCC
MAY 22 2006
CONFIDENTIAL