

<b>FLUID SAMPLE DATA</b>		Date	11-4-76	Ticket Number	135386
Sampler Pressure _____ P.S.I.G. at Surface	Kind of Job	OPEN HOLE	Halliburton District	HAYS	
Recovery: Cu. Ft. Gas _____	Tester	MR. GARRISON	Witness	MR. KRAMCHAK	
cc. Oil _____	Drilling Contractor	R AND W DRILLING COMPANY	BC S		
cc. Water _____	<b>EQUIPMENT &amp; HOLE DATA</b>				
cc. Mud _____	Formation Tested	Lansing Kansas City			
Tot. Liquid cc. _____	Elevation	2256'	KB	Ft.	
Gravity _____ ° API @ _____ ° F.	Net Productive Interval	Ft.			
Gas/Oil Ratio _____ cu. ft./bbl.	All Depths Measured From	Kelly Bushing			
RESISTIVITY _____ CHLORIDE CONTENT _____	Total Depth	3931' Ft.			
Recovery Water _____ @ _____ ° F. _____ ppm	Main Hole/Casing Size	7 7/8"			
Recovery Mud _____ @ _____ ° F. _____ ppm	Drill Collar Length	210'	I.D.	2.764" WP	
Recovery Mud Filtrate _____ @ _____ ° F. _____ ppm	Drill Pipe Length	3381'	I.D.	3.826"	
Mud Pit Sample _____ @ _____ ° F. _____ ppm	Packer Depth(s)	3618' - 3624' Ft.			
Mud Pit Sample Filtrate _____ @ _____ ° F. _____ ppm	Depth Tester Valve	3601' Ft.			
Mud Weight 9.1 vis 48 sec					

TYPE	AMOUNT	Depth Back Pres. Valve	Surface Choke	Bottom Choke
Cushion		Ft.	1/4"	3/4"
Recovered	3130 Feet of	Muddy salt water		
Recovered	Feet of			
Recovered	Feet of			
Recovered	Feet of			
Recovered	Feet of			
Remarks	SEE PRODUCTION TEST DATA SHEET.			

County				
TREGO				
TEMPERATURE	Gauge No. 536	Gauge No. 392	Gauge No.	TIME
	Depth: 3606' Ft.	Depth: 3927' Ft.	Depth: _____ Ft.	
	12 Hour Clock	12 Hour Clock	Hour Clock	Tool _____ A.M.
Est. _____ ° F.	Blanked Off -	Blanked Off -	Blanked Off	Opened 0215 P.M.
3925'				Opened _____ A.M.
Actual 124 ° F.	Pressures	Pressures	Pressures	Bypass 0815 P.M.

		Field		Office		Reported Minutes	Computed Minutes
		Field	Office	Field	Office		
First Period	Initial Hydrostatic		1806	1975	1966		
	Flow Initial		288	501	515		
	Flow Final		1227	1390	1397	60	61
	Closed in		1287	1439	1441	60	61
Second Period	Flow Initial		1240	1390	1392		
	Flow Final		1290	1447	1443	120	119
	Closed in		1294	1447	1447	120	123
	Flow Initial						
Third Period	Flow Final						
	Closed in						
	Final Hydrostatic		1743	1894	1896		

Legal Location Sec. - Twp. - Rng. 13 - 14 - 25  
 Lease Name ROSE-PARK  
 Well No. 1-13  
 Test No. 1  
 Tested Interval 3624' - 3931'  
 Field Area WILDCAT  
 County TREGO  
 State KANSAS  
 Lease Owner/Company Name GULF OIL CORPORATION


Casing perms. \_\_\_\_\_ Bottom choke \_\_\_\_\_ Surf. temp \_\_\_\_\_ °F Ticket No. 135386  
 Gas gravity \_\_\_\_\_ Oil gravity \_\_\_\_\_ GOR \_\_\_\_\_  
 Spec. gravity \_\_\_\_\_ Chlorides \_\_\_\_\_ ppm Res. \_\_\_\_\_ @ \_\_\_\_\_ °F

INDICATE TYPE AND SIZE OF GAS MEASURING DEVICE USED \_\_\_\_\_

Date Time	a.m. p.m.	Choke Size	Surface Pressure psi	Gas Rate MCF	Liquid Rate BPD	Remarks
1730						Called out, ready
1845						On location, rig circulating hole.
						Tried to get mud in shape for test
2030						Rig pulled drill pipe
2330						Picked up and made up tool
0045						Tool through table
0055						Rig started drill pipe
0205						Tool on bottom
0215						Hydrospring opened with a strong blow throughout
0315						Closed tool
0415						Opened tool with a strong blow that decreased to fair blow in 45 minutes
0615						Closed tool
0815						Tool off bottom
0900						Hit fluid 14½ stands out of hole and reversed out
1100						Tool back through table
1230						Broke down tool and read charts
1230						Job complete

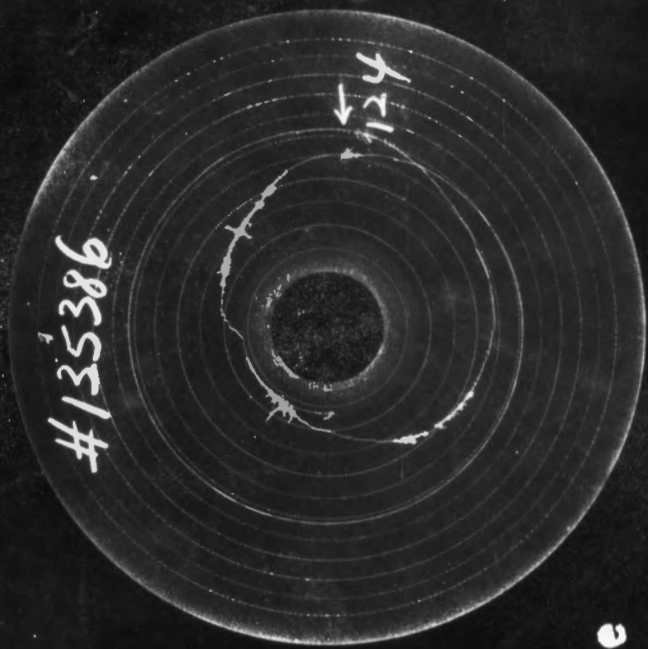
Gauge No. 536		Depth 3606'		Clock No. 11657		Ticket No. 135386	
First Flow Period		Second Flow Period		Third Flow Period		Third Closed In Pressure	
Time Defl. .000"	PSIG Temp. Corr.	Time Defl. .000"	PSIG Temp. Corr.	Time Defl. .000"	PSIG Temp. Corr.	Time Defl. .000"	PSIG Temp. Corr.
Closed In Pressure		Closed In Pressure		Closed In Pressure		Closed In Pressure	
Log $t + \frac{\theta}{\theta}$	PSIG Temp. Corr.	Log $t + \frac{\theta}{\theta}$	PSIG Temp. Corr.	Log $t + \frac{\theta}{\theta}$	PSIG Temp. Corr.	Log $t + \frac{\theta}{\theta}$	PSIG Temp. Corr.
0	.0000 288	.0000	1227	.0000	1240	.0000	1290
1	.0747 766*	.0203	1272	.1288	1274***	.8380	1294
2	.1425 979	.0405	1275	.2645	1284		
3	.2104 1107	.0608	1277	.4001	1286		
4	.2783 1151	.0810	1277	.5357	1288		
5	.3461 1185	.1013	1279	.6714	1289		
6	.4140 1227	.1216	1280	.8070	1290		
7		.1418	1281				
8		.1621	1281				
9		.1824	1282				
10		.2026	1282				
11		.2431	1284				
12		.2837	1285				
13		.3242	1285				
14		.3647	1286				
15		.4120	1287				
Gauge No. 392		Depth 3927'		Clock No. 11647		12 hour	
0	.0000 515	.0000	1397	.0000	1392	.0000	1443
1	.0738 971*	.0198	1426	.1269	1428***	.8220	1447
2	.1408 1210	.0396	1428	.2605	1436		
3	.2079 1326	.0595	1431	.3942	1439		
4	.2749 1382	.0793	1432	.5278	1441		
5	.3420 1396	.0991	1432	.6614	1442		
6	.4090 1397	.1189	1433	.7950	1443		
7		.1387	1434				
8		.1586	1435				
9		.1784	1435				
10		.1982	1436				
11		.2378	1436				
12		.2775	1437				
13		.3171	1438				
14		.3568	1439				
15		.4030	1441				
Reading Interval 10				20		Minutes	
REMARKS: *Interval = 11 minutes **First 10 intervals = 3 minutes each; next 4 intervals = 6 minutes each; last interval = 7 minutes ***Interval = 19 minutes							

5

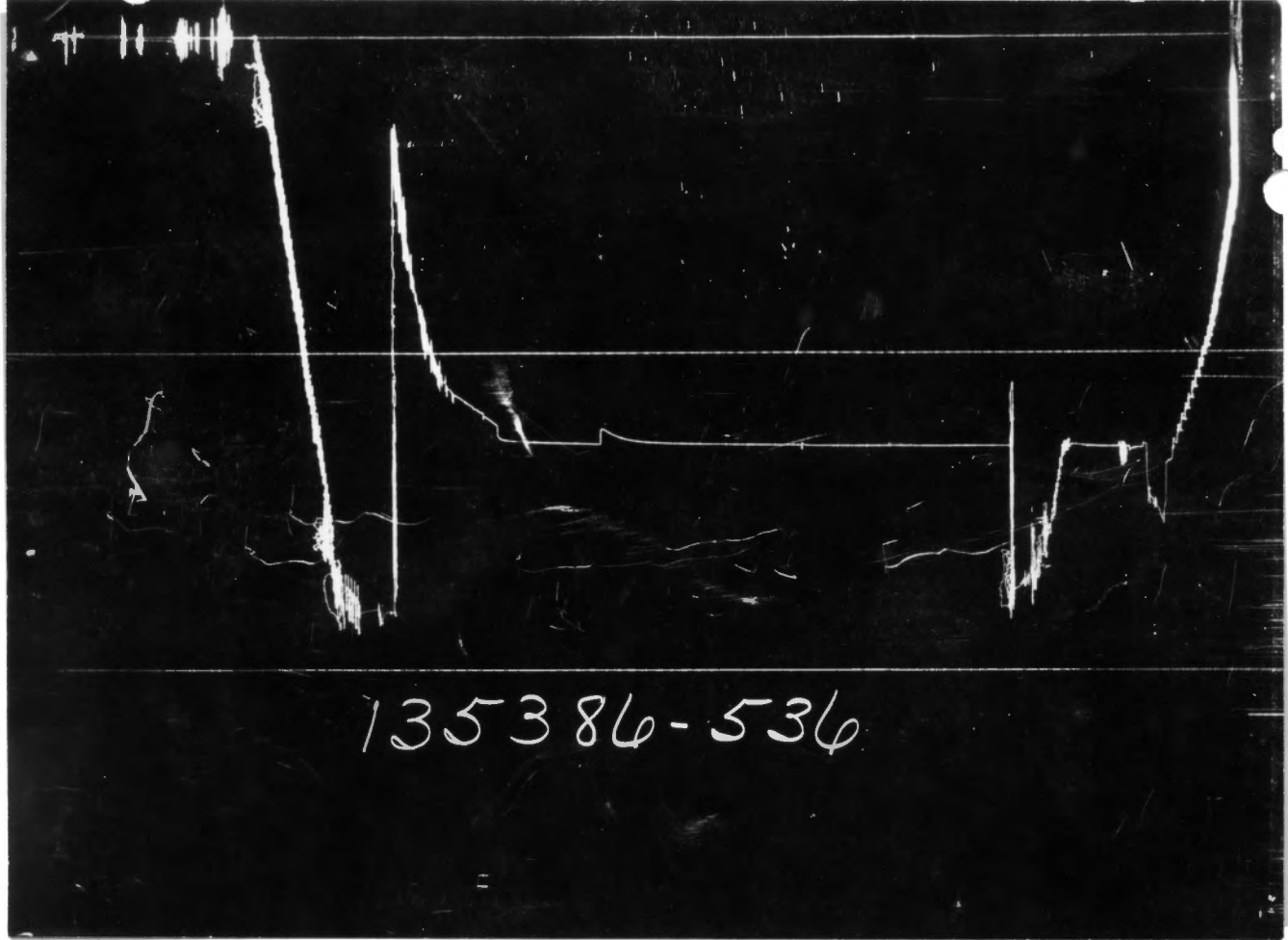


	O. D.	I. D.	LENGTH	DEPTH
Drill Pipe or Tubing .....	6"	3"	1'	3536'
Reversing Sub .....				
Water Cushion Valve .....				
Drill Pipe .....	4.5"	3.826"	3381'	
Drill Collars .....	4.5" WP	2.764"	210'	
Hondling Sub & Choke Assembly .....				
Dual CIP Valve .....	5"	.87"	6.05'	3596'
Dual CIP Sampler .....				
Hydro-Spring Tester .....	5"	.75"	5'	3601'
Multiple CIP Sampler .....				
Extension Joint .....				
AP Running Case .....	5"	3.75"	4'	3606'
Hydraulic Jar .....	5"	1.75"	5'	
VR Safety Joint .....	5"	1"	2.85'	
Pressure Equalizing Crossover .....				
Packer Assembly .....	6.75"	1.53"	5.85'	3618'
Distributor .....				
Packer Assembly .....	6.75"	1.53"	5.85'	3624'
Flush Joint Anchor .....	5"	3.84"	22'	
Pressure Equalizing Tube .....				
Blanked-Off B.T. Running Case .....				
Drill Collars & Cross overs .....	6"	2.25"	265'	
Anchor Pipe Safety Joint .....				
Packer Assembly .....				
Distributor .....				
Packer Assembly .....				
Anchor Pipe Safety Joint .....				
Side Wall Anchor .....				
Drill Collars .....				
Flush Joint Anchor .....	5"	3.84"	12'	
Temp. Case .....	5"	3.75"	1.50'	3925'
Blanked-Off B.T. Running Case .....	5"	2.75"	4'	3927'
Total Depth .....				3931'

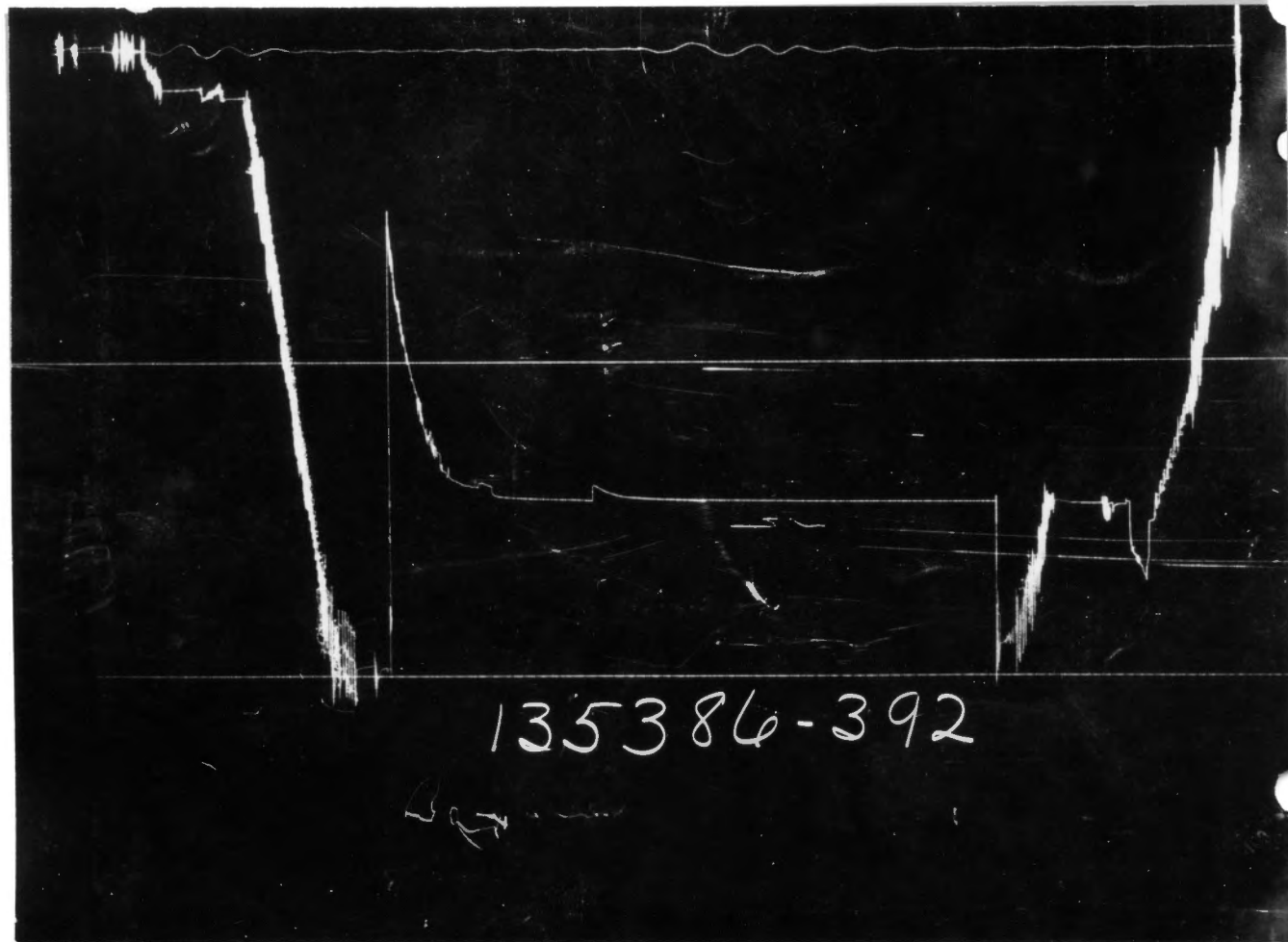
TEMPERATURE  
RECORDER  
CHART



10° each circle



135386-536



135386-392

Each Horizontal Line Equal to 1000 p.s.i.

Legal Location  
Sec. - Twp. - Rng.

NW NE 13-14S-25 W

1-13

2

Field Area  
WILDCAT

4110 - 4156'  
Tested Interval

County

TREGO

State  
KANSAS

Lease Owner/Company Name  
GULF OIL CORPORATION

PARKE  
Lease Name

1-13

2

4110 - 4156'  
Tested Interval

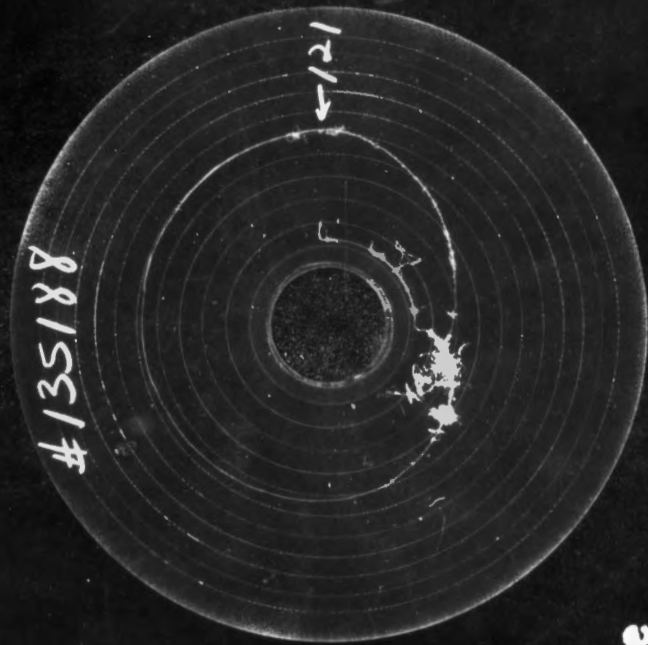
Lease Owner/Company Name  
GULF OIL CORPORATION

FLUID SAMPLE DATA				Date	11-5-76	Ticket Number	135188
Sampler Pressure _____ P.S.I.G. at Surface				Kind of Job	OPEN HOLE	Halliburton District	HAYS
Recovery: Cu. Ft. Gas _____				Tester	G. PALMBERG	Witness	V. PAYNE
cc. Oil _____				Drilling Contractor	RAINS & WILLIAMSON DRILLING COMPANY		
cc. Water _____				EQUIPMENT & HOLE DATA SM			
cc. Mud _____				Formation Tested	Fort Scott		
Tot. Liquid cc. _____				Elevation	2266'	Kelly bushing	Ft.
Gravity _____ ° API @ _____ ° F.	RESISTIVITY			Net Productive Interval	3'		Ft.
Gas/Oil Ratio _____ cu. ft./bbl.	CHLORIDE CONTENT			All Depths Measured From	Kelly bushing		
Recovery Water _____ @ _____ ° F. _____ ppm				Total Depth	4156'		Ft.
Recovery Mud _____ @ _____ ° F. _____ ppm				Main Hole/Casing Size	7 7/8"		
Recovery Mud Filtrate _____ @ _____ ° F. _____ ppm				Drill Collar Length	116 - 213' WP I.D. 2.25 - 2.764"		
Mud Pit Sample _____ @ _____ ° F. _____ ppm				Drill Pipe Length	2750' I.D. 3.826"		
Mud Pit Sample Filtrate _____ @ _____ ° F. _____ ppm				Packer Depth(s)	4104-4110' Ft.		
Mud Weight 9.5 vis 55 sec x cp				Depth Tester Valve	4093' Ft.		
Cushion	TYPE	AMOUNT	Depth Back Pres. Valve	Surface Choke	1/4"	Bottom Choke	3/4"
Recovered	10	Feet of	rotary mud with a few specks of oil				
Recovered		Feet of					
Recovered		Feet of					
Recovered		Feet of					
Recovered		Feet of					
Remarks SEE PRODUCTION TEST DATA SHEET							
TEMPERATURE	Gauge No. 536	Gauge No. 392	Gauge No.	TIME			
	Depth: 4112 Ft.	Depth: 4152 Ft.	Depth: _____ Ft.				
	12 Hour Clock	12 Hour Clock	Hour Clock				
Est. °F.	Blanked Off NO		Blanked Off YES	Blanked Off		Tool	A.M.
4151						Opened	1420 P.M.
Actual 121 °F.						Opened	A.M.
	Pressures		Pressures	Pressures		Bypass	1735 P.M.
	Field	Office	Field	Office	Field	Office	Reported
Initial Hydrostatic		2084	2146	2109			Minutes
First Period	Flow Initial	20	41	43			Minutes
	Flow Final	21	49	43			30
	Closed in	578	607	599			60
Second Period	Flow Initial	36	49	51			Minutes
	Flow Final	28	58	45			45
	Closed in	143	131	165			60
Third Period	Flow Initial						Minutes
	Flow Final						Minutes
	Closed in						Minutes
Final Hydrostatic		2071	2130	2094			Minutes



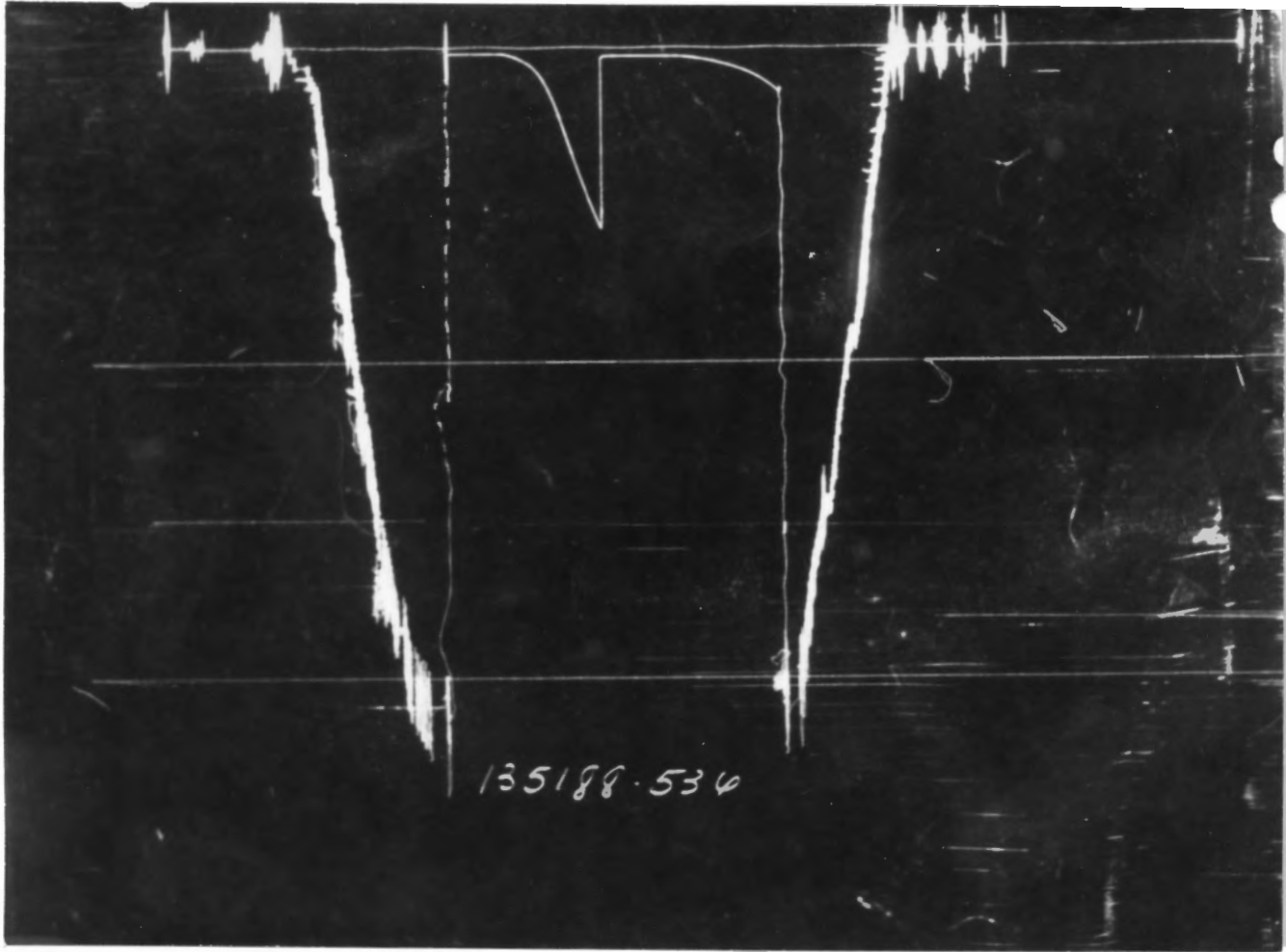
	O. D.	I. D.	LENGTH	DEPTH
Drill Pipe or Tubing .....	5.75"	2.75"	1'	
Reversing Sub .....				
Water-Custrian-Valve Weight Pipe ..	4½"	2.764"	213'	
Drill Pipe .....	4½"	3.826"	2750'	
Drill Collars .....	6"	2.25"	116'	
Handling Sub & Choke Assembly .....				
Dual CIP Valve .....	5"	.87"	5'	4088'
Dual CIP Sampler .....				
Hydro-Spring Tester .....	5"	.75"	5'	4093'
Multiple CIP Sampler .....				
Extension Joint .....				
AP Running Case .....				
Hydraulic Jar .....	5"	1.75"	5'	
VR Safety Joint .....	5"	1"	3'	
Pressure Equalizing Crossover .....				
Packer Assembly .....	6.75"	1.53"	6'	4104'
Distributor .....				
Packer Assembly .....	6.75"	1.53"	6'	4110'
Flush Joint Anchor .....				
Pressure Equalizing Tube .....				
Blanked-Off B.T. Running Case .....	5"	3.06"	4'	4112'
Drill Collars .....				
Anchor Pipe Safety Joint .....				
Packer Assembly .....				
Distributor .....				
Packer Assembly .....				
Anchor Pipe Safety Joint .....				
Side Wall Anchor .....				
Drill Collars .....				
Flush Joint Anchor .....	5"	3.84"	38'	
Blanked-Off B.T. Running Case .....	5"	2.44"	4'	4152'
Total Depth .....				4156'

TEMPERATURE  
RECORDER  
CHART

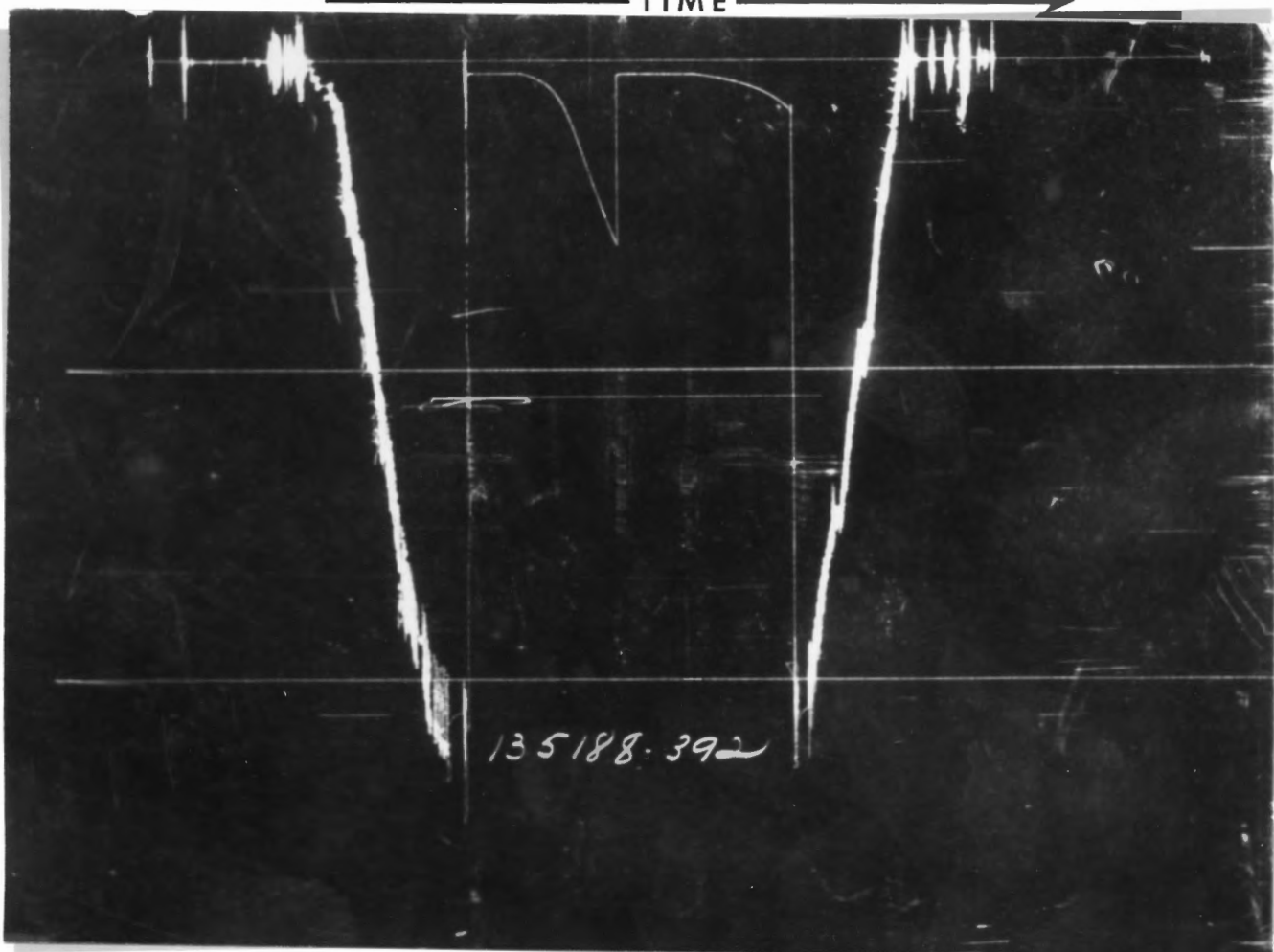


10° each circle

PRESSURE



TIME



Each Horizontal Line Equal to 1000 p.s.i.

<b>FLUID SAMPLE DATA</b>				Date <b>11-6-76</b>		Ticket Number <b>135189</b>	
Sampler Pressure _____ P.S.I.G. at Surface				Kind of Job <b>OPEN HOLE</b>		Halliburton District <b>HAYS</b>	
Recovery: Cu. Ft. Gas _____ cc. Oil _____ cc. Water _____ cc. Mud _____ Tot. Liquid cc. _____				Tester <b>MR. PALMBERG</b>		Witness <b>MR. PAYNE</b>	
Gravity _____ ° API @ _____ ° F.				Drilling Contract <b>RAINS &amp; WILLIAMSON</b> <b>IC S</b>			
Gas/Oil Ratio _____ cu. ft./bbl.				<b>EQUIPMENT &amp; HOLE DATA</b>			
RESISTIVITY _____ CHLORIDE CONTENT _____				Formation Tested <b>Mississippi</b>			
Recovery Water @ _____ ° F. _____ ppm				Elevation <b>2266'</b> KB Ft.			
Recovery Mud @ _____ ° F. _____ ppm				Net Productive Interval <b>8'</b> Ft.			
Recovery Mud Filtrate @ _____ ° F. _____ ppm				All Depths Measured From <b>Kelly Bushing</b>			
Mud Pit Sample @ _____ ° F. _____ ppm				Total Depth <b>4260'</b> Ft.			
Mud Pit Sample Filtrate @ _____ ° F. _____ ppm				Main Hole/Casing Size <b>7 7/8"</b>			
Mud Weight <b>9.6</b> vis <b>50</b> sec				Drill Collar Length <b>138'-213'</b> FW I.D. <b>2.25"-2.764"</b> FW			
				Drill Pipe Length <b>3852'</b> I.D. <b>3.826"</b>			
				Packer Depth(s) <b>4180' - 4186'</b> Ft.			
				Depth Tester Valve <b>4169'</b> Ft.			
Cushion		TYPE	AMOUNT	Depth Back Pres. Valve	Surface Choke	Bottom Choke	
			-	Ft.	<b>1/4"</b>	<b>3/4"</b>	
Recovered		<b>960</b>	Feet of	Formation water			
Recovered			Feet of				
Recovered			Feet of				
Recovered			Feet of				
Recovered			Feet of				
Remarks <b>SEE PRODUCTION TEST DATA SHEET.</b>							
TEMPERATURE		Gauge No. <b>536</b>	Gauge No. <b>392</b>	Gauge No.	TIME		
		Depth: <b>4188'</b> Ft.	Depth: <b>4256'</b> Ft.	Depth:			
		<b>12</b> Hour Clock	<b>12</b> Hour Clock	Hour Clock	Tool <b>11:10</b> A.M.		
Est. ° F.		Blanked Off <b>NO</b>	Blanked Off <b>YES</b>	Blanked Off	Opened <b>14:40</b> P.M.		
<b>4254' @</b>		Pressures		Pressures		Bypass <b>14:40</b> P.M.	
Actual <b>138'</b>		Pressures		Pressures		Bypass <b>14:40</b> P.M.	
		Field	Office	Field	Office	Field	Office
Initial Hydrostatic		-	<b>2086</b>	<b>2195</b>	<b>2121</b>	Reported	Computed
Flow Initial		-	<b>29</b>	<b>41</b>	<b>67</b>	Minutes	Minutes
Flow Final		-	<b>201</b>	<b>246</b>	<b>237</b>	<b>30</b>	<b>30</b>
Closed in		-	<b>1264</b>	<b>1292</b>	<b>1296</b>	<b>60</b>	<b>59</b>
Flow Initial		-	<b>227</b>	<b>246</b>	<b>250</b>		
Flow Final		-	<b>411</b>	<b>435</b>	<b>443</b>	<b>60</b>	<b>60</b>
Closed in		-	<b>1236</b>	<b>1270</b>	<b>1269</b>	<b>60</b>	<b>61</b>
Flow Initial		-					
Flow Final		-					
Closed in		-					
Final Hydrostatic		-	<b>2083</b>	<b>2170</b>	<b>2116</b>		

Legal Location Sec. - Twp. - Rng. **13 - 14S - 25W**  
 Lease Name **PARKE**  
 Well No. **1-13**  
 Test No. **3**  
 Tested Interval **4186' - 4260'**  
 County **TREGO**  
 State **KANSAS**  
 Field Area **WILDCAT**  
 Meq. From Tester Valve  
 Lease Owner/Company Name **GULF ENERGY & MINERAL CORPORATION**



Gauge No. 536		Depth 4188'		Clock No. 11657		12 hour		Ticket No. 135189			
First Flow Period		First Closed In Pressure		Second Flow Period		Second Closed In Pressure		Third Flow Period		Third Closed In Pressure	
Time Defl. .000"	PSIG Temp. Corr.	Time Defl. .000"	PSIG Temp. Corr.	Time Defl. .000"	PSIG Temp. Corr.	Time Defl. .000"	PSIG Temp. Corr.	Time Defl. .000"	PSIG Temp. Corr.	Time Defl. .000"	PSIG Temp. Corr.
$\text{Log } \frac{t + \theta}{\theta}$		$\text{Log } \frac{t + \theta}{\theta}$		$\text{Log } \frac{t + \theta}{\theta}$		$\text{Log } \frac{t + \theta}{\theta}$		$\text{Log } \frac{t + \theta}{\theta}$		$\text{Log } \frac{t + \theta}{\theta}$	
0	.000	29	.000	201	.000	227	.000	411			
1	.0338	76	.0207	1046*	.0692	252	.0339	1066**			
2	.0676	106	.0484	1121	.1384	290	.0611	1111			
3	.1014	133	.0760	1158	.2076	324	.0882	1138			
4	.1352	159	.1037	1181	.2768	356	.1154	1156			
5	.1690	182	.1313	1198	.3460	384	.1425	1172			
6	.2030	201	.1590	1212	.4150	411	.1697	1182			
7			.1867	1223			.1968	1192			
8			.2143	1231			.2240	1201			
9			.2420	1239			.2511	1208			
10			.2696	1246			.2783	1214			
11			.2973	1251			.3054	1220			
12			.3250	1256			.3326	1224			
13			.3526	1259			.3597	1228			
14			.3803	1263			.3868	1233			
15			.4080	1264			.4140	1236			
Gauge No. 392											
Depth 4256'											
Clock No. 11647											
12 hour											
0	.000	67	.000	237	.000	250	.000	443			
1	.034	113	.0204	1068*	.0673	287	.0336	1097**			
2	.068	144	.0477	1152	.1346	322	.0605	1142			
3	.102	170	.0749	1190	.2019	356	.0874	1169			
4	.136	195	.1022	1215	.2692	388	.1142	1187			
5	.170	219	.1294	1233	.3365	415	.1411	1203			
6	.204	237	.1567	1246	.4040	443	.1680	1214			
7			.1839	1257			.1949	1224			
8			.2112	1265			.2218	1233			
9			.2384	1272			.2486	1239			
10			.2657	1278			.2755	1246			
11			.2929	1283			.3024	1252			
12			.3202	1287			.3293	1257			
13			.3474	1291			.3562	1261			
14			.3747	1294			.3830	1265			
15			.4020	1296			.4100	1269			
Reading Interval 5											
4											
10											
4											
Minutes											

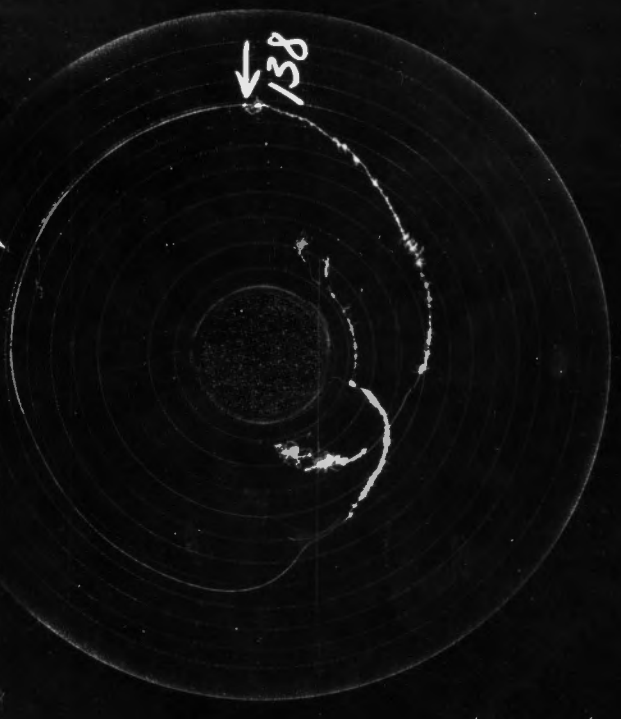
REMARKS: \*First interval equal to 3 minutes \*\*First interval equal to 5 minutes

(25)

	O. D.	I. D.	LENGTH	DEPTH
Drill Pipe or Tubing				
Reversing Sub	5.75"	2.75"	1'	
Water Cushion Valve				
Drill Pipe	4 1/2"	3.826"	3852'	
Drill Collars	6.0"	2.25"	138'	
Handling Sub & Choke Assembly	4 1/2"	2.764"	213' FLEX	WEIGHT
Dual CIP Valve	5.0"	.87"	5'	4165'
Dual CIP Sampler				
Hydro-Spring Tester	5.0"	.75"	5'	4169'
Multiple CIP Sampler				
Extension Joint				
AP Running Case				
Hydraulic Jar	5.0"	1.75"	5'	
VR Safety Joint	5.0"	1.0"	3'	
Pressure Equalizing Crossover				
Packer Assembly	6.75"		6'	4180'
Distributor				
Packer Assembly	6.75"	1.53"	6'	4186'
Flush Joint Anchor				
Pressure Equalizing Tube				
Blanked-Off B.T. Running Case	5.0"	1.53"	4'	4188'
Drill Collars				
Anchor Pipe Safety Joint				
Packer Assembly				
Distributor				
Packer Assembly				
Anchor Pipe Safety Joint				
Side Wall Anchor				
Drill Collars	6.0"	2.25"	29'	
Flush Joint Anchor	5.0"	3.84"	37'	
Blanked-Off B.T. Running Case	5.0"	2.44"	4'	4256'
Total Depth				4260'

TEMPERATURE  
RECORDER  
CHART

#135109



10° each circle

↑

PRESSURE

TIME →

135189-536

135189-392

Each Horizontal Line Equal to 1000 p.s.i.