

State Geological Survey
BRANCH

KANSAS DRILLERS LOG

S. 24 T. 14 R. 29 **(E W)**

API No. 15 — 063 — 20429 ✓
County Number

Loc. NE SE SW

County Gove

Operator
Beren Corporation

Address
970 Fourth Financial Center, Wichita, Kansas 67202

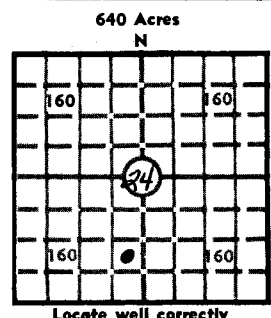
Well No. 1 Lease Name **PURCELLE**

Footage Location
feet from (N) (S) line feet from (E) (W) line

Principal Contractor **Pioneer Drilling** Geologist **Bob Gebhart**

Spud Date **November 16, 1979** Total Depth **4425** P.B.T.D.

Date Completed **December 3, 1979** Oil Purchaser



Elev.: Gr. _____

DF _____ KB 2630

CASING RECORD

Report of all strings set — surface, intermediate, production, etc.

Purpose of string	Size hole drilled	Size casing set (in O.D.)	Weight lbs/ft.	Setting depth	Type cement	Sacks	Type and percent additives
Surface		8-5/8	28#	334	60-40 pozmix	200	2% gel, 3% CC
Production		5½	14#	4164			

LINER RECORD

PERFORATION RECORD

Top, ft.	Bottom, ft.	Sacks cement	Shots per ft.	Size & type	Depth interval

Size	Setting depth	Packer set at

ACID, FRACTURE, SHOT, CEMENT SQUEEZE RECORD

Amount and kind of material used	Depth interval treated

INITIAL PRODUCTION

Date of first production		Producing method (flowing, pumping, gas lift, etc.)			
RATE OF PRODUCTION PER 24 HOURS	Oil bbls.	Gas MCF	Water bbls.	Gas-oil ratio CFPB	
Disposition of gas (vented, used on lease or sold)			Producing interval (s)		

INSTRUCTIONS: As provided in KCC Rule 82-2-125, within 90 days after completion of a well, one completed copy of this Drillers Log shall be transmitted to the State Geological Survey of Kansas, 4150 Monroe Street, Wichita, Kansas 67209. Copies of this form are available from the Conservation Division, State Corporation Commission, 3830 So. Meridian (P.O. Box 17027), Wichita, Kansas 66217. Phone AC 316-522-2206. If confidential custody is desired, please note Rule 82-2-125. Drillers Logs will be on open file in the Oil and Gas Division, State Geological Survey of Kansas, Lawrence, Kansas 66044.

Operator Beren Corporation		DESIGNATE TYPE OF COMP.: OIL, GAS, DRY HOLE, SWDW, ETC.:
Well No. 1	Lease Name PURCELLE	Oil
S 24 T 14 R 29 E W		

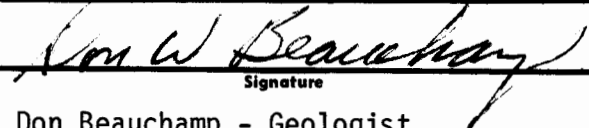
WELL LOG

Show all important zones of porosity and contents thereof; cored intervals, and all drill-stem tests, including depth interval tested, cushion used, time tool open, flowing and shut-in pressures, and recoveries.

SHOW GEOLOGICAL MARKERS, LOGS RUN, OR OTHER DESCRIPTIVE INFORMATION.

FORMATION DESCRIPTION, CONTENTS, ETC.	TOP	BOTTOM	NAME	DEPTH
Surface sand and shale	0	343		
Sand and shale	343	1240		
Shale and sand	1240	1834		
Shale	1834	2042		
Shale	2042	2042		
Shale	2042	2055		
Anhydrite	2055	2090		
Shale	2090	2200		
	2200	2395		
Shale and lime	2395	2514		
Shale	2514	2750		
Shale and lime	2750	2907		
Shale and lime	2907	3077		
Shale	3077	3225		
	3225	3410		
Shale and lime	3410	3583		
Shale and lime	3583	3695		
Shale and lime	3695	3729		
Shale and lime	3729	3790		
Shale and lime	3790	3817		
Shale and lime	3817	3878		
Shale and lime	3878	3960		
Shale and lime	3960	3974		
Shale and lime	3974	4020		
Shale and lime	4020	4020		
	4020	4038		
Shale and lime	4038	4070		
Shale and lime	4070	4070		
Shale and lime	4070	4096		
Shale and lime	4096	4142		
Lime and shale	4142	4160		
Lime and shale	4160	4230		
Lime and shale	4230	4300		
Lime and shale	4300	4340		
	4340	4425		
RTD	4425			

USE ADDITIONAL SHEETS, IF NECESSARY, TO COMPLETE WELL RECORD.

Date Received	 Signature
	Don Beauchamp - Geologist Title
	April 1, 1980 Date

Copy

WELL LOG

OPERATOR: Beren Corporation

WELL NAME: Purcella #1 LOCATION: NE SE SW 24-14S-29W

COUNTY: Gove STATE: Kansas

WELL COMMENCED: November 16, 1979 WELL COMPLETED: December 3, 1979

ELEVATION: 2630' K.B. TOTAL DEPTH: 4425'

PRODUCTION: Oil RIG NO: #2

CASING - 8-5/8": 333.65' of 28# cemented with 200 sxs 60-40 poz 2% gel 3% cc
5-1/2": 4164' of 14#

ALL MEASUREMENTS TAKEN FROM THE TOP OF ROTARY BUSHING:

FROM	TO	FORMATION	DEVIATION FROM VERTICAL	REMARKS:
0'	343'	surface sand and shale	343' - 1 1/2 degrees	
343'	1240'	sand and shale		
1240'	1834'	shale and sand		
1834'	2042'	shale		
2042'	2042'	shale		
2042'	2055'	shale		
2055'	2090'	Anhydrite		
2090'	2200'	shale		
2200'	2395'		2395' - 3/4 degree	
2395'	2514'	shale and lime		
2514'	2750'	shale		
2750'	2907'	shale and lime		
2907'	3077'	shale and lime		
3077'	3225'	shale		
3225'	3410'			
3410'	3583'	shale and lime		
3583'	3695'	shale and lime	3790' - 3/4 degree	
3695'	3729'	shale and lime		
3729'	3790'	shale and lime		
3790'	3817'	shale and lime	4096' 4142'	shale and lime
3817'	3878'	shale and lime	4142' 4142'	lime and shale
3878'	3960'	shale and lime	4142' 4160'	
3960'	3974'	shale and lime	4160' 4230'	lime and shale
3974'	4020'	shale and lime	4230' 4300'	lime and shale
4020'	4020'	shale and lime	4300' 4340'	lime and shale
4020'	4038'		4340' 4425'	
4038'	4070'	shale and lime	4425' RTD	
4070'	4070'	shale and lime		
4070'	4096'	shale and lime		

STATE OF KANSAS

RECEIVED
COMMISSIONER
DEC 11 1979