

P2

IMPORTANT
Kans. Geo. Survey request
samples on this well.

State Geological Survey
WICHITA, BRANCH

KANSAS
WELL COMPLETION REPORT AND
DRILLER'S LOG

S. 24 T. 14 R29W E
Loc. SW NE SW
County Gove

API No. 15 _____
County _____ Number _____

Operator
Beren Corporation

Address
970 Fourth Financial Center, Wichita, Kansas 67202

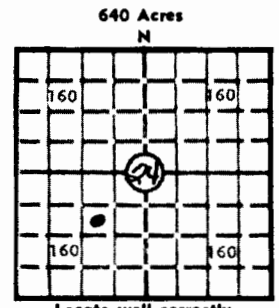
Well No. 2 Lease Name PURCELLE

Footage Location
feet from (N) (S) line _____ feet from (E) (W) line _____

Principal Contractor Pioneer Drilling Geologist _____

Spud Date 9-5-80 Date Completed 9-16-80 Total Depth 4400 P.B.T.D. _____

Directional Deviation _____ Oil and/or Gas Purchaser _____



Elev.: Gr. 2630
DF _____ KB 2635

CASING RECORD

Report of all strings set — surface, intermediate, production, etc.

Purpose of string	Size hole drilled	Size casing set (in O.D.)	Weight lbs/ft.	Setting depth	Type cement	Sacks	Type and percent additives
Surface		8-5/8	24#	337	60-40 poz	250	2% gel, 3% CC

LINER RECORD

PERFORATION RECORD

Top, ft.	Bottom, ft.	Sacks cement	Shots per ft.	Size & type	Depth interval

Size	Setting depth	Packer set at

ACID, FRACTURE, SHOT, CEMENT SQUEEZE RECORD

Amount and kind of material used	Depth interval treated

INITIAL PRODUCTION

Date of first production _____	Producing method (flowing, pumping, gas lift, etc.) _____
RATE OF PRODUCTION PER 24 HOURS	Oil _____ Gas _____ Water _____ Gas-oil ratio _____
Disposition of gas (vented, used on lease or sold) _____	Producing interval (s) _____

INSTRUCTIONS: As provided in KCC Rule 82-2-125, within 90 days after completion of a well, one completed copy of this Drillers Log shall be transmitted to the State Geological Survey of Kansas, 4150 Monroe Street, Wichita, Kansas 67209. Copies of this form are available from the Conservation Division, State Corporation Commission, 245 No. Water, Wichita, Kansas 67202. Phone AC 316-522-2206. If confidential custody is desired, please note Rule 82-2-125. Drillers Logs will be on open file in the Oil and Gas Division, State Geological Survey of Kansas, Lawrence, Kansas 66044.

Operator Beren Corporation		DESIGNATE TYPE OF COMP.: OIL, GAS, DRY HOLE, SWDW, ETC.:
Well No. 2	Lease Name PURCELLE	Dry hole
S <u>24</u> T <u>14</u> R <u>29</u> W <u>E</u> W		

WELL LOG

Show all important zones of porosity and contents thereof; cored intervals, and all drill-stem tests, including depth interval tested, cushion used, time tool open, flowing and shut-in pressures, and recoveries.

SHOW GEOLOGICAL MARKERS, LOGS RUN,
OR OTHER DESCRIPTIVE INFORMATION.

FORMATION DESCRIPTION, CONTENTS, ETC.	TOP	BOTTOM	NAME	DEPTH
Sand	0	345		
Sand and shale	345	1072		
Shale and sand	1072	2059		
Anhydrite	2059	2112		
Shale and sand	2112	2158		
Sand and shale	2158	2426		
Shale	2426	2787		
Shale and lime	2787	4400		
RTD	4400			

USE ADDITIONAL SHEETS, IF NECESSARY, TO COMPLETE WELL RECORD.

Date Received	<i>Don Beauchamp</i>
	Signature
	Don Beauchamp - Geologist
	Title
	October 1, 1980
	Date

PI

24-14-29W

State Geological Survey
WICHITA DIVISION

WELL LOG

OPERATOR: Beren Corporation

WELL NAME: Purcelle #2 LOCATION: SW NE SW 24-14S-29W

COUNTY: Gove STATE: Kansas

WELL COMMENCED: September 5, 1980 WELL COMPLETED: September 16, 1980

ELEVATION: 2630' G.R. TOTAL DEPTH: 4400'

PRODUCTION: D & A RIG NO: #2

CASING - 8-5/8": 336.89' of new 24# cemented with 250 sxs 60/40 poz 2% gel
3% cc
5-1/2":

ALL MEASUREMENTS TAKEN FROM THE TOP OF ROTARY BUSHING:

FROM	TO	FORMATION	DEVIATION FROM VERTICAL	REMARKS:
0'	35'	sand		
35'	345'	sand	345' - 0 degrees	
345'	1072'	sand and shale	1424' - 1 degree	
1072'	1646'	shale and sand	2426' - 1 1/2 degrees	
1646'	2059'	shale and sand	3980' - 1 degree	
2059'	2112'	anhydrite		
2112'	2158'	shale and sand		
2158'	2426'	sand and shale		
2426'	2562'	shale		
2562'	2787'	shale		
2787'	3015'	shale and lime		
3015'	3180'	shale and lime		
3180'	3347'	shale and lime		
3347'	3512'	shale and lime		
3512'	3689'	shale and lime		
3689'	3750'	shale and lime		
3750'	3806'	shale and lime		
3806'	3952'	shale and lime		
3952'	3980'	shale and lime		
3980'	3980'	shale and lime	4277'	4346' shale and lime
3980'	4002'	shale and lime	4346'	4400' shale and lime
4002'	4030'	shale and lime	4400'	RTD
4030'	4035'	shale and lime		
4035'	4058'	shale and lime		
4058'	4070'	shale and lime		
4070'	4119'	shale and lime		
4119'	4175'	shale and lime		
4175'	4277'	shale and lime		

RECEIVED
STATE CORPORATION COMMISSION
SEP 30 1980
CONSERVATION DIVISION
Wichita, Kansas

STATE OF KANSAS
COUNTY OF

The undersigned hereby certifies that to the best of his knowledge and belief the foregoing is a true and correct copy of the original well log as filed with the State Corporation Commission.