

15-003-2,769-00-00

DIAMOND TESTING

P.O. Box 157

HOISINGTON, KANSAS 67544

(620) 653-7550 • (800) 542-7313

STC 30046.D013

31-143-29w

Company L. D. Drilling, Inc. Lease & Well No. Lundgren Trust "A" No. 2
 Elevation 2621 KB Formation Lansing/Kansas City "H"- "J" Effective Pay -- Ft. Ticket No. T013
 Date 4-10-09 Sec. 31 Twp. 14S Range 29W County Gove State Kansas
 Test Approved By Kim B. Shoemaker Diamond Representative Tim Venters
 Formation Test No. 1 Interval Tested from 3,823 ft. to 3,905 ft. Total Depth 3,905 ft.
 Packer Depth 3,818 ft. Size 6 3/4 in. Packer Depth -- ft. Size -- in.
 Packer Depth 3,823 ft. Size 6 3/4 in. Packer Depth -- ft. Size -- in.
 Depth of Selective Zone Set ft.

Top Recorder Depth (Inside) 3,824 ft. Recorder Number 30046 Cap. 5,000 psi
 Bottom Recorder Depth (Outside) 3,908 ft. Recorder Number 13386 Cap. 5,750 psi
 Below Straddle Recorder Depth ft. Recorder Number Cap. psi
 Drilling Contractor Royal Drilling, Inc. - Rig 1 Drill Collar Length -- ft. I.D. -- in.
 Mud Type Chemical Viscosity 55 Weight Pipe Length -- ft. I.D. -- in.
 Weight 9.0 Water Loss 7.2 cc. Drill Pipe Length 3,803 ft. I.D. 3 1/2 in.
 Chlorides 1,200 P.P.M. Test Tool Length 20 ft. Tool Size 3 1/2 - IF in.
 Jars: Make Sterling Serial Number Not Run Anchor Length 20' perf. w/62' drill pipe Size 4 1/2 - FH in.
 Did Well Flow? No Reversed Out No Surface Choke Size 1 in. Bottom Choke Size 5/8 in.
 Main Hole Size 7 7/8 in. Tool Joint Size 4 1/2 - XH in.

Blow: 1st Open: Weak, surface blow, building to 8 ins. No blow back during shut-in.
 2nd Open: Weak, surface blow, building. Off bottom of bucket in 34 mins. No blow back during shut-in.

Recovered 170 ft. of gas in pipe
 Recovered 15 ft. of heavy oil cut mud = .213450 bbls. (Grind out: 31%-oil; 69%-mud)
 Recovered 65 ft. of oil & gas cut mud = .924950 bbls. (Grind out: 23%-oil; 14%-gas; 63%-mud)
 Recovered 60 ft. of slightly gas cut oily mud = .853800 bbls. (Grind out: 6%-gas; 19%-oil; 75%-mud)
 Recovered 140 ft. of TOTAL FLUID = 1.992200 bbls.
 Remarks Tool Sample Grind Out: 23%-oil; 77%-mud

Time Set Packer(s) 11:25 ~~AM~~ P.M. Time Started Off Bottom 2:25 A.M. ~~PM~~ Maximum Temperature 122°
 Initial Hydrostatic Pressure (A) 1833 P.S.I.
 Initial Flow Period Minutes 30 (B) 16 P.S.I. to (C) 60 P.S.I.
 Initial Closed In Period Minutes 45 (D) 1101 P.S.I.
 Final Flow Period Minutes 45 (E) 48 P.S.I. to (F) 75 P.S.I.
 Final Closed In Period Minutes 60 (G) 1082 P.S.I.
 Final Hydrostatic Pressure (H) 1825 P.S.I.

Diamond Testing

Page 2 of 8 Pages

General information Report

General Information

Company Name L. D. DRILLING, INC.

Contact	L. D. DAVIS	Job Number	T012
Well Name	LUNDGREN "A" #2	Representative	TIM VENTERS
Unique Well ID	DST #1 LKC "H/J" 3823-3905	Well Operator	L.D. DRILLING, INC.
Surface Location	31-14S-29W GOVE CO.	Report Date	2009/04/11
Well License Number		Prepared By	TIM VENTERS
Field	LUNDGREN		
Well Type	Vertical		

Test Type	Drill Stem Test	Start Test Time	20:35:00
Formation	DST #1 LKC "H/J" 3823-3905	Final Test Time	03:34:00
Well Fluid Type	01 Oil		
Start Test Date	2009/04/10		
Final Test Date	2009/04/11		
Gauge Name	30046		
Gauge Serial Number			

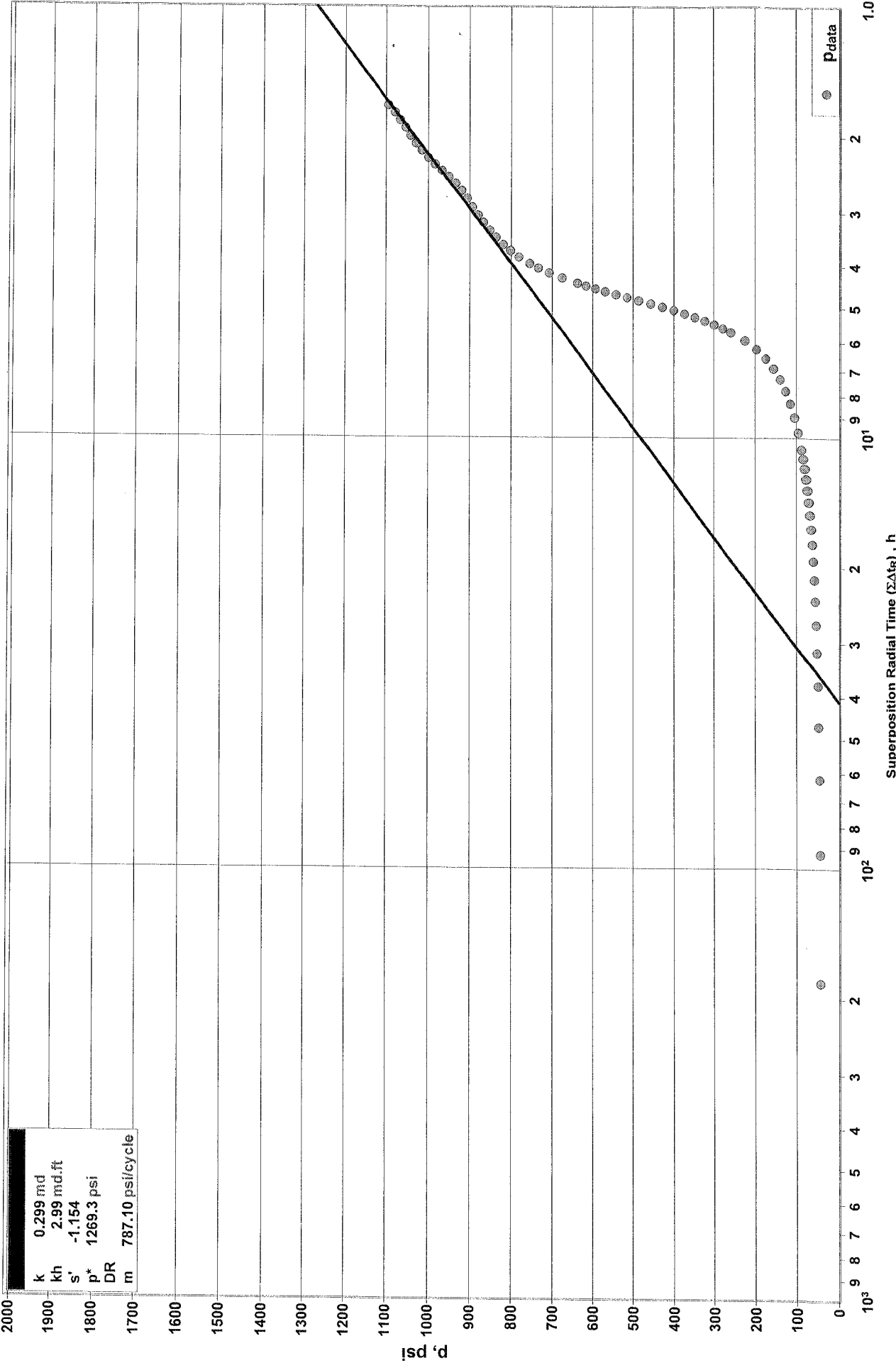
Test Results

RECOVERED: 170' GAS IN PIPE	100% GAS		
15' HEAVY OIL CUT MUD	31% OIL	69% MUD	
65' OIL & GAS CUT MUD	23% OIL	63% MUD	
60' OIL, SLIGHT GAS CUT MUD	19% OIL	6% GAS	75% MUD

TOOL SAMPLE: 23% OIL 77% MUD

INITIAL SHUT-IN HORNER PLOT

L.D. DRILLING, INC
LUNDGREN TRUST "A" #2
DST #1 LKC 'H-J' 3,328' - 3,905



Oil Well Test - Buildup Radial Flow Analysis

L.D. DRILLING, INC
LUNDGREN TRUST "A" #2

DST #1 LKC 'H-J' 3,328' - 3,905

Analysis Results

Total Sandface Rate ($q_t B_t$)	7.196 bbl/d	Apparent Skin (s')	-1.154
Semilog Slope (m)	787.10	Skin - Damage	-1.154
Gas Permeability (k_g)	md	Skin - Inclination	
Oil Permeability (k_o)	0.299 md	Skin - Partial Penetration	
Water Permeability (k_w)	md	Pressure Drop Due to Skin (Δp_s)	psi
Flow Capacity (kh)	2.990 md.ft	Damage Ratio (DR)	
Total Mobility (k/μ_t)	0.15 md/cp	Flow Efficiency (FE)	
Total Transmissivity (kh/μ_t)	1.49 md.ft/cp		

Reservoir Parameters

Net Pay (h)	10.000 ft
Total Porosity (ϕ_t)	10.00%
Water Saturation (S_w)	20.00%
Oil Saturation (S_o)	80.00%
Gas Saturation (S_g)	0.00%
Wellbore Radius (r_w)	0.30 ft
Formation Temperature (T)	120.0°F
Formation Compressibility (c_f)	4.862e-6 psi ⁻¹
Total Compressibility (c_t)	1.369e-5 psi ⁻¹

Pressures

Initial Pressure (p_i)	1991.18 psi
Extrapolated Pressure (p^*)	1269.31 psi
Final Flowing Pressure (p_{wfo})	45.58 psi

Production and Times

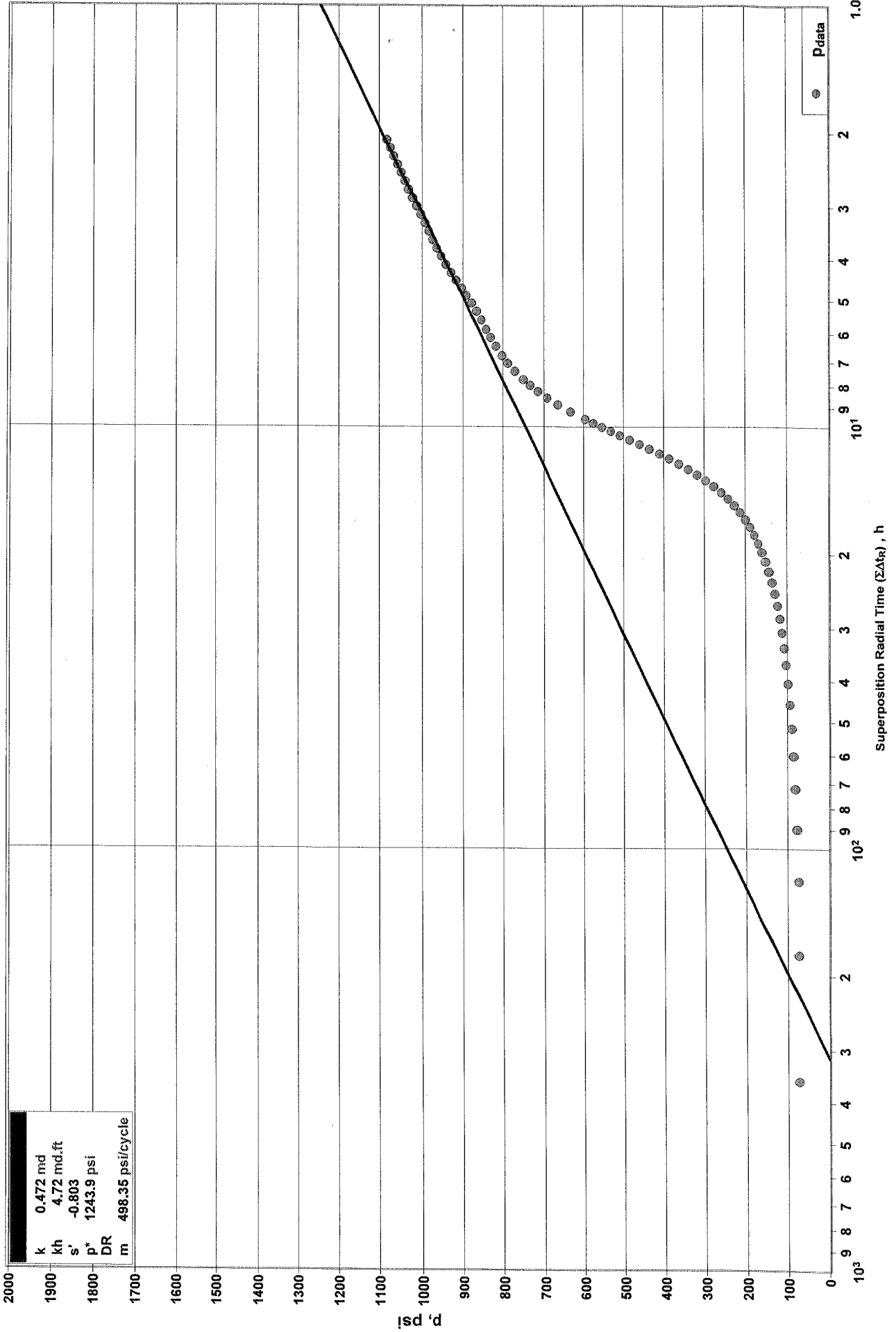
Corrected Flow Time (t_c)	0.5083 hr
Cumulative Oil Production	0.128 bbl
Final Oil Rate	6.000 bbl/d

Fluid Properties

Oil Compressibility (c_o)	1.02930e-5 psi ⁻¹
Oil Formation Volume Factor (B_o)	1.199
Oil Viscosity (μ_o)	2.011 cp
Solution Gas Ratio (R_s)	361 scf/bbl
Oil Gravity (γ_o)	30.00° API
Gas Gravity (G)	0.650
PVT Reference Pressure (pp_{VT})	1991.18 psi

FINAL SHUT IN HORNER PLOT

L.D. DRILLING, INC
LUNDGREN TRUST "A" #2
DST #1 LKC 'H-J' 3,328' - 3,905



Oil Well Test - Buildup Radial Flow Analysis

L.D. DRILLING, INC
LUNDGREN TRUST "A" #2

DST #1 LKC 'H-J' 3,328' - 3,905

Analysis Results

Total Sandface Rate ($q_t B_t$)	7.196 bbl/d	Apparent Skin (s')	-0.803
Semilog Slope (m)	498.35	Skin - Damage	-0.803
Gas Permeability (k_g)	md	Skin - Inclination	
Oil Permeability (k_o)	0.472 md	Skin - Partial Penetration	
Water Permeability (k_w)	md	Pressure Drop Due to Skin (Δp_s)	psi
Flow Capacity (kh)	4.723 md.ft	Damage Ratio (DR)	
Total Mobility (k/μ_t)	0.23 md/cp	Flow Efficiency (FE)	
Total Transmissivity (kh/μ_t)	2.35 md.ft/cp		

Reservoir Parameters

Net Pay (h)	10.000 ft
Total Porosity (ϕ_t)	10.00%
Water Saturation (S_w)	20.00%
Oil Saturation (S_o)	80.00%
Gas Saturation (S_g)	0.00%
Wellbore Radius (r_w)	0.30 ft
Formation Temperature (T)	120.0°F
Formation Compressibility (c_f)	4.862e-6 psi ⁻¹
Total Compressibility (c_t)	1.369e-5 psi ⁻¹

Pressures

Initial Pressure (p_i)	1991.18 psi
Extrapolated Pressure (p^*)	1243.92 psi
Final Flowing Pressure (p_{wfo})	74.69 psi

Production and Times

Corrected Flow Time (t_c)	1.2444 hr
Cumulative Oil Production	0.312 bbl
Final Oil Rate	6.000 bbl/d

Fluid Properties

Oil Compressibility (c_o)	1.02930e-5 psi ⁻¹
Oil Formation Volume Factor (B_o)	1.199
Oil Viscosity (μ_o)	2.011 cp
Solution Gas Ratio (R_s)	361 scf/bbl
Oil Gravity (γ_o)	30.00° API
Gas Gravity (G)	0.650
PVT Reference Pressure (pp_{VT})	1991.18 psi

L.D. DRILLING, INC.

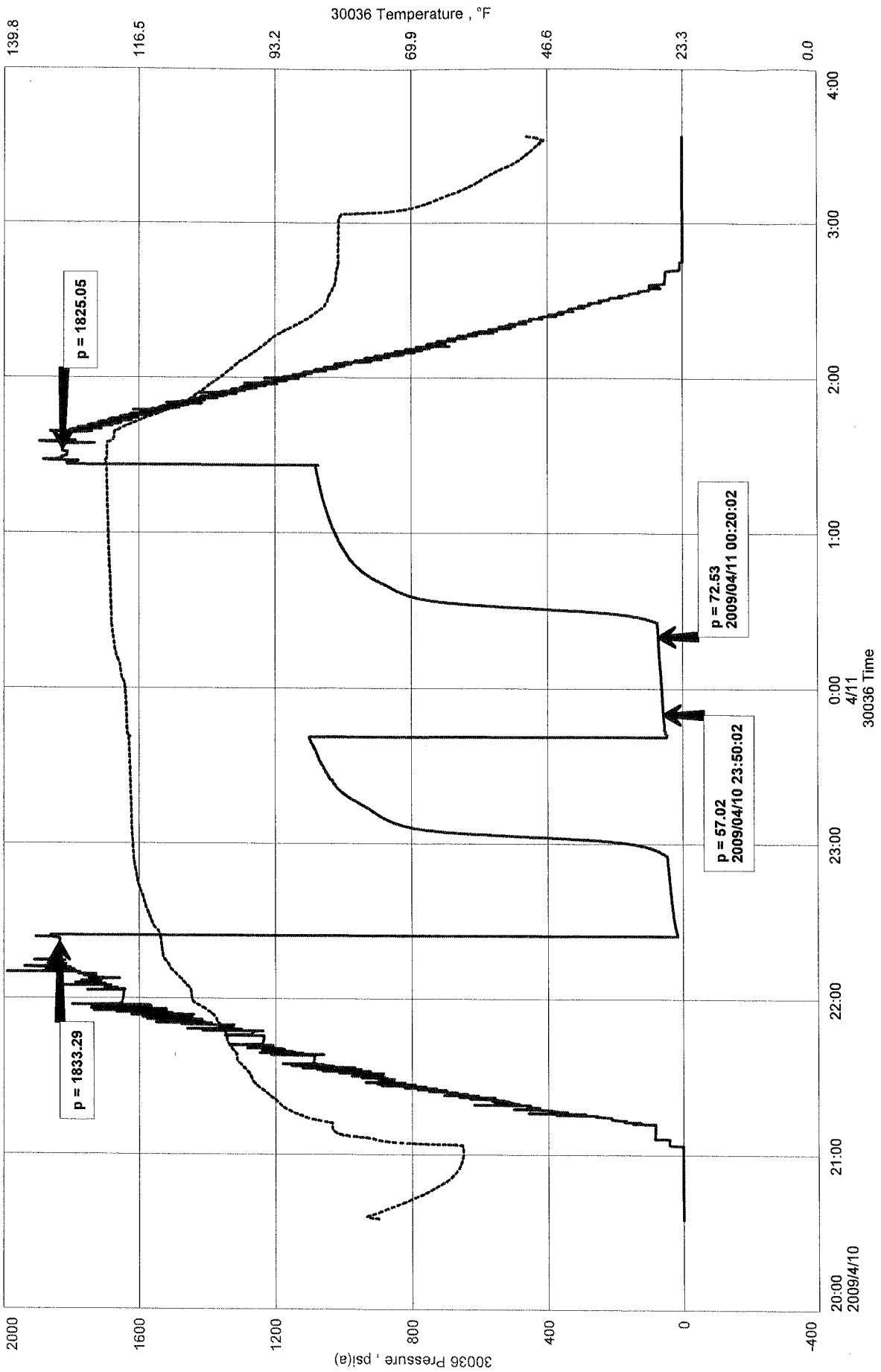
DESCRIPTION	SECOND READING	FIRST READING	PRESSURE CHANGE	PIPE SIZE-ID	FLUID GRADIENT	TIME CHANGE	TOTAL TIME	DAILY PROD.	AVERAGE ESTIMATED %OIL PRODUCTION
FINAL FLOW	73	57	16	0.0142	0.3593	30	1440	30	0.2
									6

LUNDRGEN TRUST "A" #1 DST #1 ESTIMATED PRODUCTION

LUNDGREN TRUST "A" #2
Formation: DST #1 LKC "H-J" 3,823' - 3,905'
Pool: WILDCAT

L.D. DRILLING, INC.
DST #1 LKC "H-J" 3,823' - 3,905'
Start Test Date: 2009/04/10
Final Test Date: 2009/04/11

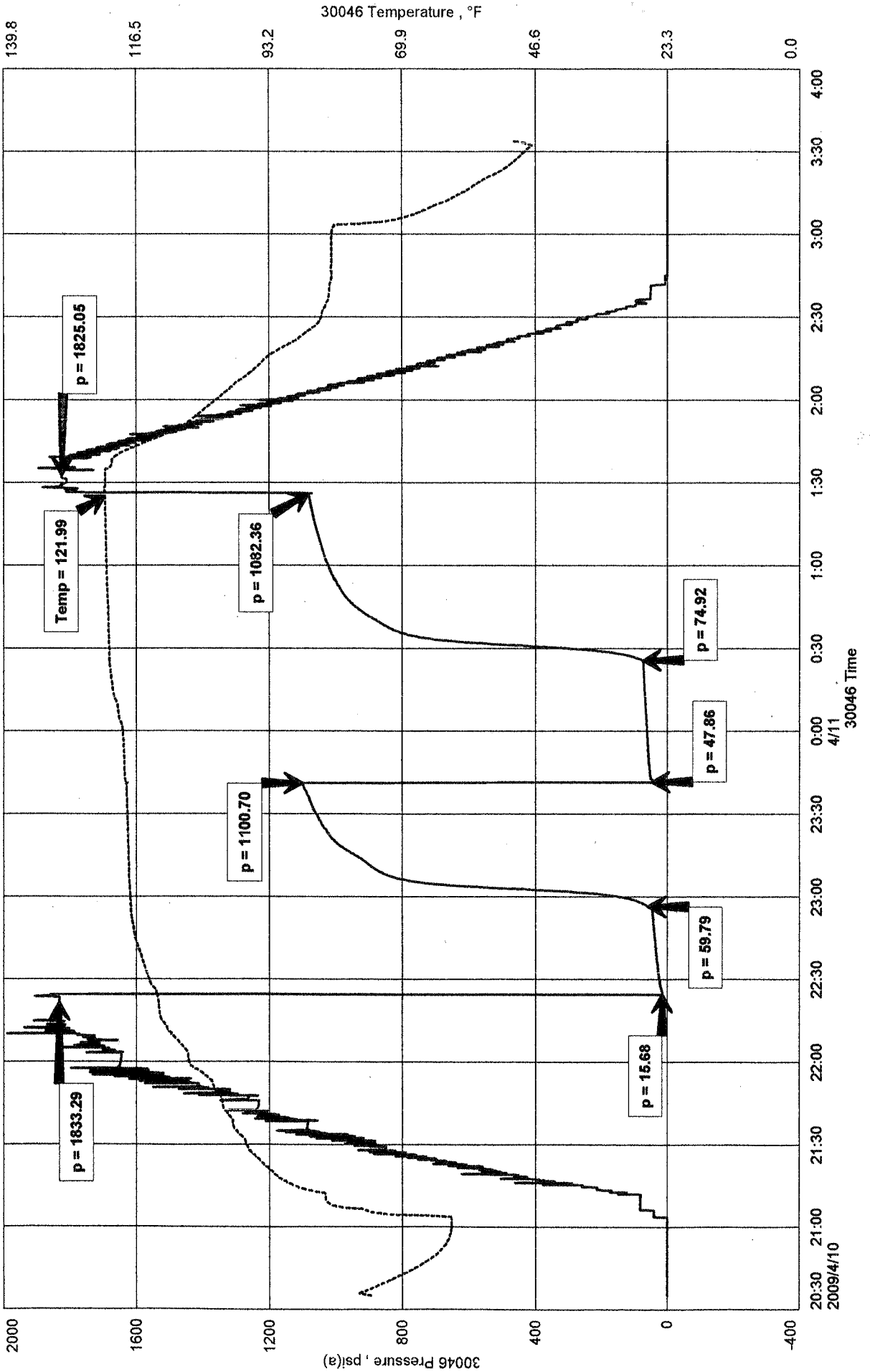
ESTIMATED PRODUCTION TIMES



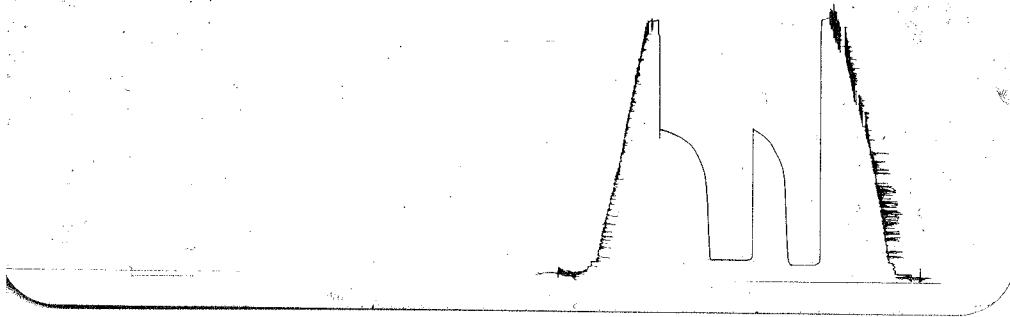
LUNDGREN "A" #2
 Formation: DST #1 LKC "H/J" 3823-3905
 Pool: LUNDGREN
 Job Number: T012

L. D. DRILLING, INC.
 DST #1 LKC "H/J" 3823-3905
 Start Test Date: 2009/04/10
 Final Test Date: 2009/04/11

LUNDGREN "A" #2

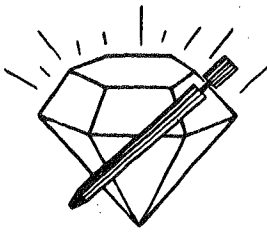


DST #1
 3823-3905
 Outside
 LOC. 3908



This is an actual photograph of recorder chart.

POINT	PRESSURE		
	Field Reading	Elec. Office Reading	
(A) Initial Hydrostatic Mud	1833	1833	PSI
(B) First Initial Flow Pressure.....	16	16	PSI
(C) First Final Flow Pressure	60	60	PSI
(D) Initial Closed-in Pressure	1101	1101	PSI
(E) Second Initial Flow Pressure	48	48	PSI
(F) Second Final Flow Pressure.....	75	75	PSI
(G) Final Closed-in Pressure.....	1082	1082	PSI
(H) Final Hydrostatic Mud	1825	1825	PSI



DIAMOND TESTING
P.O. Box 157
HOISINGTON, KANSAS 67544
(620) 653-7550 • (800) 542-7313
STC 30046.D014

Company L. D. Drilling, Inc. Lease & Well No. Lundgren Trust "A" No. 2
Elevation 2621 KB Formation Lansing/Kansas City "k" Effective Pay -- Ft. Ticket No. T014
Date 4-11-09 Sec. 31 Twp. 14S Range 29W County Gove State Kansas
Test Approved By Kim B. Shoemaker Diamond Representative Tim Venters

Formation Test No. 2 Interval Tested from 3,911 ft. to 3,940 ft. Total Depth 3,940 ft.
Packer Depth 3,906 ft. Size 6 3/4 in. Packer Depth -- ft. Size -- in.
Packer Depth 3,911 ft. Size 6 3/4 in. Packer Depth -- ft. Size -- in.
Depth of Selective Zone Set ft.

Top Recorder Depth (Inside) 3,912 ft. Recorder Number 30046 Cap. 5,000 psi
Bottom Recorder Depth (Outside) 3,937 ft. Recorder Number 13386 Cap. 5,750 psi
Below Straddle Recorder Depth ft. Recorder Number Cap. psi

Drilling Contractor Royal Drilling, Inc. - Rig 1 Drill Collar Length -- ft. I.D. -- in.
Mud Type Chemical Viscosity 49 Weight Pipe Length -- ft. I.D. -- in.
Weight 9.1 Water Loss 7.2 cc. Drill Pipe Length 3,891 ft. I.D. 3 1/2 in.
Chlorides 1,600 P.P.M. Test Tool Length 20 ft. Tool Size 3 1/2 - IF in.
Jars: Make Sterling Serial Number Not Run Anchor Length 29 ft. Size 4 1/2 - FH in.
Did Well Flow? No Reversed Out No Surface Choke Size 1 in. Bottom Choke Size 5/8 in.
Main Hole Size 7 7/8 in. Tool Joint Size 4 1/2 - XH in.

Blow: 1st Open: Weak surface blow, building to 6 ins. Weak surface blow back during shut-in.
2nd Open: Weak surface blow, building to 7 1/2 ins. Weak surface blow back during shut-in.

Recovered 5 ft. of clean oil = .071150 bbls. (Grind out: 100%-oil)
Recovered 5 ft. of oily & very heavily water cut mud = .071150 bbls. (Grind out: 19%-oil; 39%-water; 42%-mud)
Recovered 125 ft. of slightly oily & very heavily mud cut water = 1.778750 bbls. (Grind out: 3%-oil; 52%-water; 45%-mud)
Recovered 135 ft. of TOTAL FLUID = 1.921050 bbls.
Recovered ft. of
Remarks Tool Sample Grind Out: 3%-oil; 86%-water; 11%-mud

Time Set Packer(s) 1:17 ~~AM~~ P.M. Time Started Off Bottom 4:17 ~~AM~~ P.M. Maximum Temperature 129°
Initial Hydrostatic Pressure (A) 1869 P.S.I.
Initial Flow Period Minutes 30 (B) 14 P.S.I. to (C) 59 P.S.I.
Initial Closed In Period Minutes 45 (D) 849 P.S.I.
Final Flow Period Minutes 45 (E) 45 P.S.I. to (F) 73 P.S.I.
Final Closed In Period Minutes 60 (G) 845 P.S.I.
Final Hydrostatic Pressure (H) 1841 P.S.I.

Diamond Testing

General information Report

General Information

Company Name L.D. DRILLING, INC.

Contact	L.D. DAVIS	Job Number	T013
Well Name	LUNDGREN TRUST "A" #2	Representative	TIM VENTERS
Unique Well ID	DST #2 LKC "K" 3911-3940	Well Operator	L.D. DRILLING, INC.
Surface Location	31-14S-29W GOVE CO.	Report Date	2009/04/11
Well License Number		Prepared By	TIM VENTERS
Field	LUNDGREN		
Well Type	Vertical		

Test Type	Drill Stem Test	Start Test Time	11:17:00
Formation	DST #2 LKC "K" 3911-3940	Final Test Time	18:03:00
Well Fluid Type	01 Oil		
Start Test Date	2009/04/11		
Final Test Date	2009/04/11		
Gauge Name	30046		
Gauge Serial Number			

Test Results

RECOVERED: 5' CLEAN OIL
5' OIL, VERY HEAVY WATER CUT MUD
125' SLIGHT OIL, VERY HEAVY MUD CUT WATER

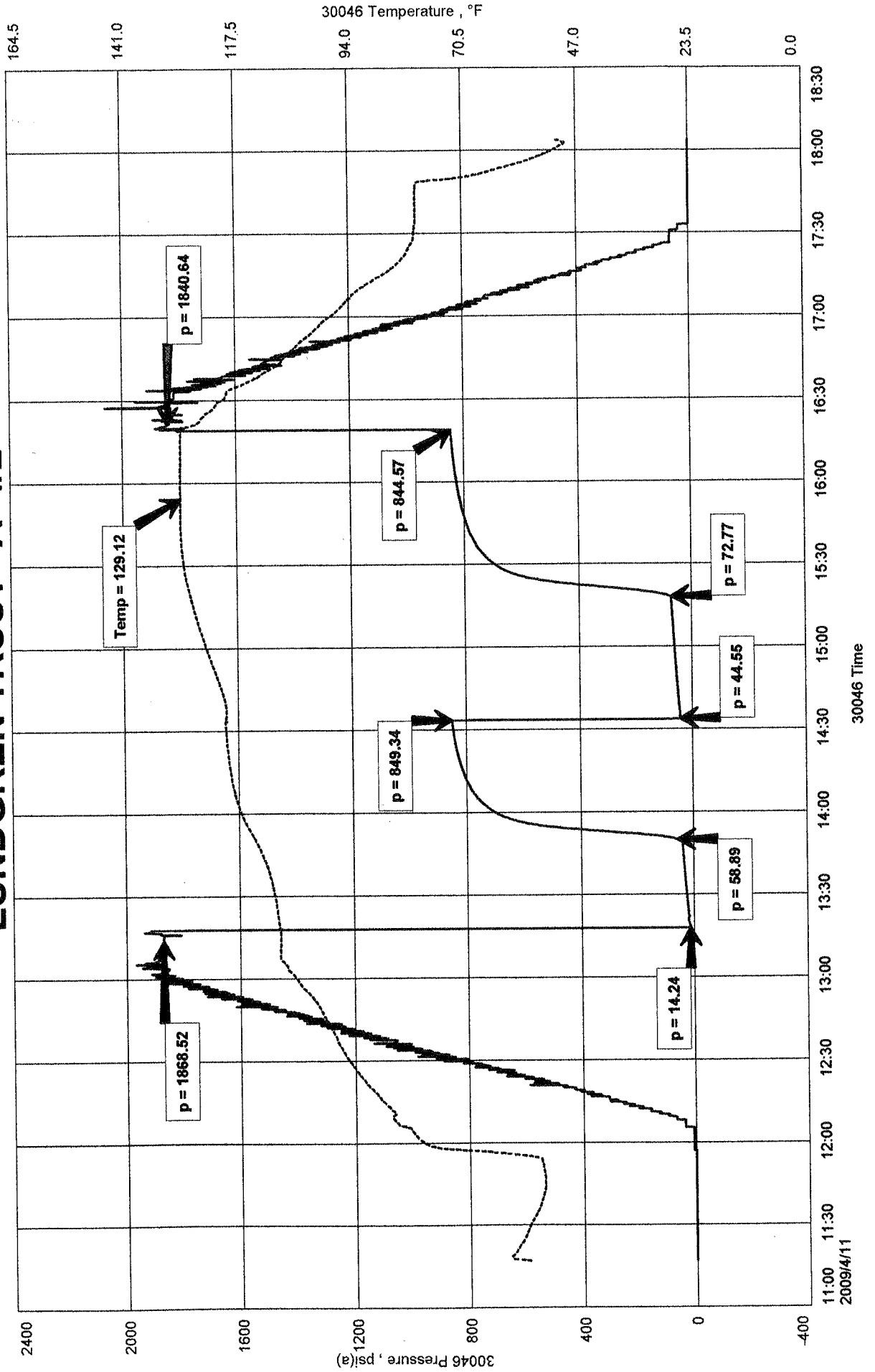
100% OIL	
19% OIL	39% WATER
3% OIL	52% WATER

TOOL SAMPLE: 3% OIL 86% WATER 11% MUD

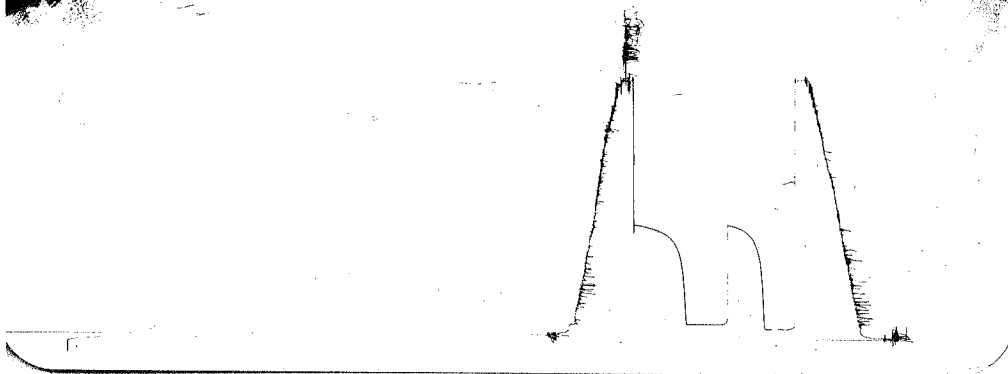
LUNDGREN TRUST "A" #2
 Formation: DST #2 LKC "K" 3911-3940
 Pool: LUNDGREN
 Job Number: T013

L.D. DRILLING, INC.
 DST #2 LKC "K" 3911-3940
 Start Test Date: 2009/04/11
 Final Test Date: 2009/04/11

LUNDGREN TRUST "A" #2

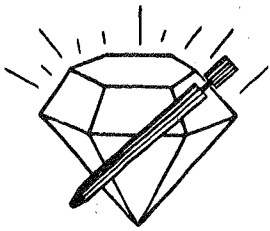


DST #2
 3911-3940
 Outside
 LOC. 3937



This is an actual photograph of recorder chart.

POINT	PRESSURE		Elec. Office Reading	PSI
	Field Reading			
(A) Initial Hydrostatic Mud	1869	1869		PSI
(B) First Initial Flow Pressure.....	14	14		PSI
(C) First Final Flow Pressure	59	59		PSI
(D) Initial Closed-in Pressure	849	849		PSI
(E) Second Initial Flow Pressure	45	45		PSI
(F) Second Final Flow Pressure.....	73	73		PSI
(G) Final Closed-in Pressure.....	845	845		PSI
(H) Final Hydrostatic Mud	1841	1841		PSI



DIAMOND TESTING
P.O. Box 157
HOISINGTON, KANSAS 67544
(620) 653-7550 • (800) 542-7313
STC 30046.D015

Company L. D. Drilling, Inc. Lease & Well No. Lundgren Trust "A" No. 2
Elevation 2621 KB Formation Marmaton/Pawnee Effective Pay -- Ft. Ticket No. T015
Date 4-12-09 Sec. 31 Twp. 14S Range 29W County Gove State Kansas

Test Approved By Kim B. Shoemaker Diamond Representative Tim Venters

Formation Test No. 3 Interval Tested from 3,980 ft. to 4,125 ft. Total Depth 4,125 ft.
Packer Depth 3,975 ft. Size 6 3/4 in. Packer Depth -- ft. Size -- in.
Packer Depth 3,980 ft. Size 6 3/4 in. Packer Depth -- ft. Size -- in.
Depth of Selective Zone Set ft.

Top Recorder Depth (Inside) 3,981 ft. Recorder Number 30046 Cap. 5,000 psi
Bottom Recorder Depth (Outside) 4,122 ft. Recorder Number 13386 Cap. 5,750 psi
Below Straddle Recorder Depth ft. Recorder Number Cap. psi

Drilling Contractor Royal Drilling, Inc. - Rig 1 Drill Collar Length -- ft. I.D. -- in.
Mud Type Chemical Viscosity 52 Weight Pipe Length -- ft. I.D. -- in.
Weight 9.2 Water Loss 8.0 cc. Drill Pipe Length 3,953 ft. I.D. 3 1/2 in.
Chlorides 1,200 P.P.M. Test Tool Length 27 ft. Tool Size 3 1/2 - IF in.
Jars: Make Sterling Serial Number 3 Anchor Length 22' perf. w/123' drill pipe Size 4 1/2 - FH in.
Did Well Flow? No Reversed Out No Surface Choke Size 1 in. Bottom Choke Size 5/8 in.
Main Hole Size 7 7/8 in. Tool Joint Size 4 1/2 - XH in.

Blow: 1st Open: Weak surface blow, building to 5 ins. No blow back during shut-in.
2nd Open: 1 in. blow, building to 8 ins. No blow back during shut-in.

Recovered 70 ft. of slightly oil cut mud = .996100 bbls. (Grind out: 7%-oil; 93%-mud)
Recovered ft. of
Recovered ft. of
Recovered ft. of
Recovered ft. of

Remarks Tool Sample Grind Out: 5%-oil; 95%-mud

Time Set Packer(s) 4:19 ^{AM.}P.M. Time Started Off Bottom 7:24 ^{AM.}P.M. Maximum Temperature 121°
Initial Hydrostatic Pressure (A) 1927 P.S.I.
Initial Flow Period Minutes 30 (B) 19 P.S.I. to (C) 30 P.S.I.
Initial Closed In Period Minutes 45 (D) 870 P.S.I.
Final Flow Period Minutes 45 (E) 25 P.S.I. to (F) 46 P.S.I.
Final Closed In Period Minutes 65 (G) 849 P.S.I.
Final Hydrostatic Pressure (H) 1910 P.S.I.

Diamond Testing

Page 2 of 2 Pages
General information Report

General Information

Company Name L.D. DRILLING, INC.

Contact	L.D. DAVIS	Job Number	T014
Well Name	LUNDGREN TRUST "A" #2	Representative	TIM VENTERS
Unique Well ID	DST #3 MAR./PAWN. 3980-4125	Well Operator	L.D. DRILLING, INC.
Surface Location	31-14S-29W GOVE CO.	Report Date	2009/04/12
Well License Number		Prepared By	TIM VENTERS
Field	LUNDGREN		
Well Type	Vertical		

Test Type	Drill Stem Test	Start Test Time	13:52:00
Formation	DST#3 MARMATON/PAWNEE 3980-4125	Final Test Time	21:07:00
Well Fluid Type	01 Oil		
Start Test Date	2009/04/12		
Final Test Date	2009/04/12		
Gauge Name	30046		
Gauge Serial Number			

Test Results

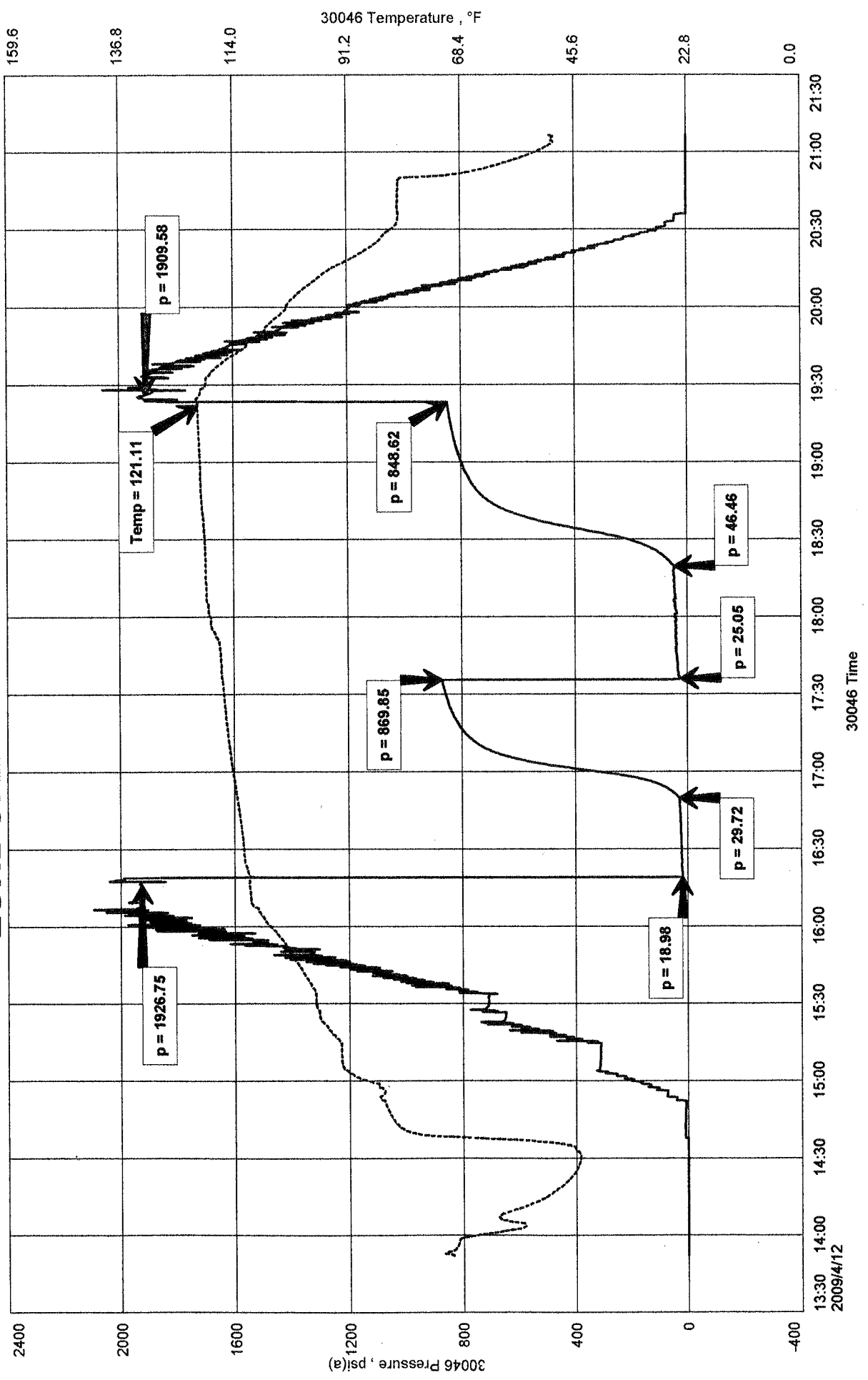
RECOVERED: 70' SLIGHT OIL CUT MUD 7% OIL 93% MUD

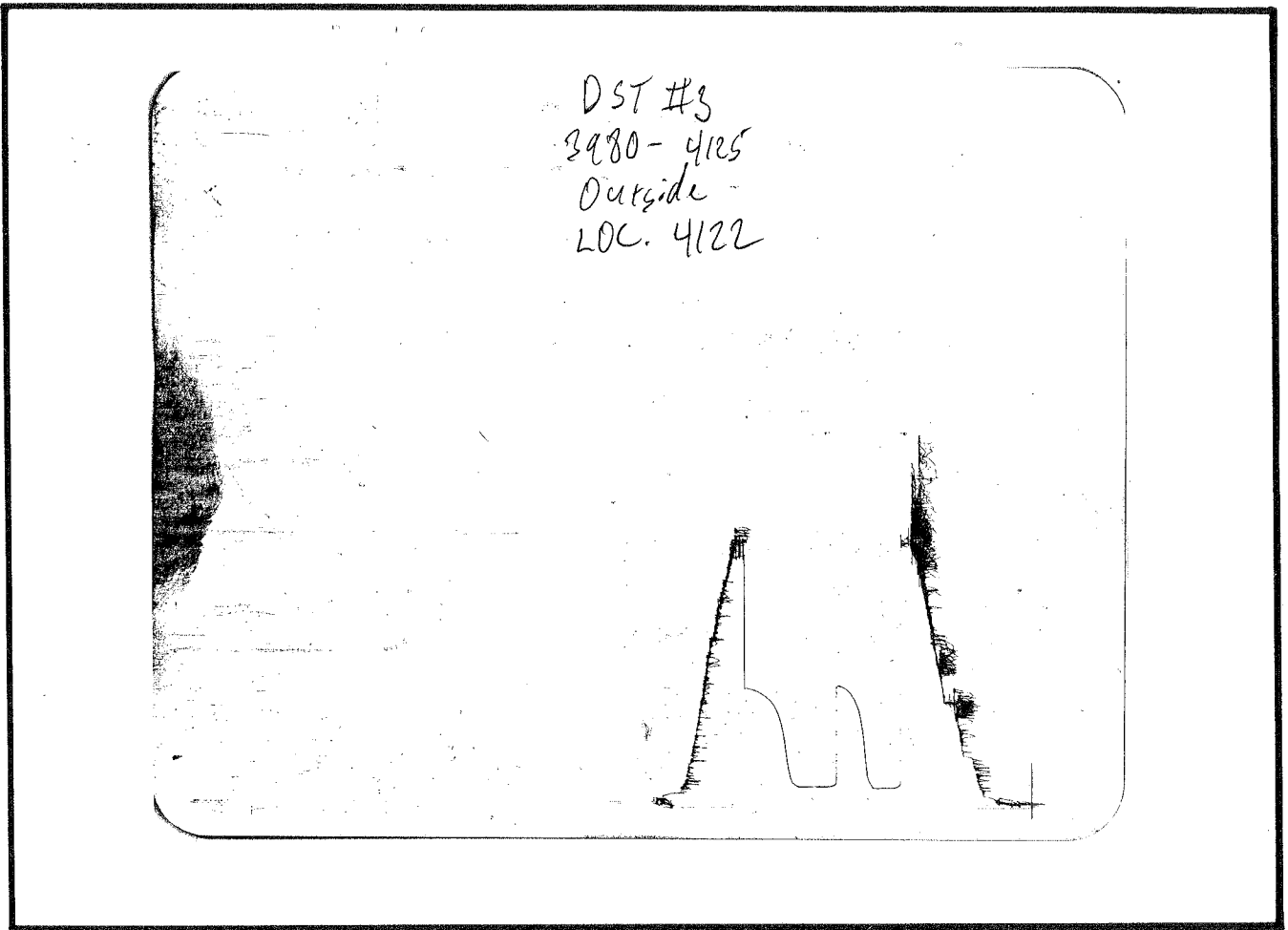
TOOL SAMPLE: 5%OIL 95% MUD

LUNDGREN TRUST "A" #2
 Formation: DST#3 MARMATON/PAWNEE 3980-4125
 Pool: LUNDGREN
 Job Number: T014

L.D. DRILLING, INC.
 DST #3 MAR/PAWN. 3980-4125
 Start Test Date: 2009/04/12
 Final Test Date: 2009/04/12

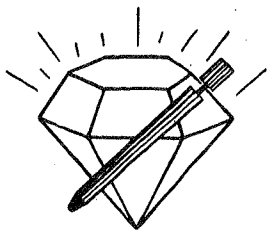
LUNDGREN TRUST "A" #2





This is an actual photograph of recorder chart.

POINT	PRESSURE		Elec. Office Reading	PSI
	Field Reading			
(A) Initial Hydrostatic Mud	1927	1927		PSI
(B) First Initial Flow Pressure.....	19	19		PSI
(C) First Final Flow Pressure	30	30		PSI
(D) Initial Closed-in Pressure	870	870		PSI
(E) Second Initial Flow Pressure	25	25		PSI
(F) Second Final Flow Pressure.....	46	46		PSI
(G) Final Closed-in Pressure.....	849	849		PSI
(H) Final Hydrostatic Mud.....	1910	1910		PSI



DIAMOND TESTING

P.O. Box 157

HOISINGTON, KANSAS 67544

(620) 653-7550 • (800) 542-7313

STC 30046.D016

Company L. D. Drilling, Inc. Lease & Well No. Lundgren Trust "A" No. 2

Elevation 2621 KB Formation Myrick Station/Fort Scott Effective Pay -- Ft. Ticket No. T016

Date 4-13-09 Sec. 31 Twp. 14S Range 29W County Gove State Kansas

Test Approved By Kim B. Shoemaker Diamond Representative Tim Venters

Formation Test No. 4 Interval Tested from 4,129 ft. to 4,195 ft. Total Depth 4,195 ft.

Packer Depth 4,124 ft. Size 6 3/4 in. Packer Depth -- ft. Size -- in.

Packer Depth 4,129 ft. Size 6 3/4 in. Packer Depth -- ft. Size -- in.

Depth of Selective Zone Set ft.

Top Recorder Depth (Inside) 4,130 ft. Recorder Number 30046 Cap. 5,000 psi

Bottom Recorder Depth (Outside) 4,192 ft. Recorder Number 13386 Cap. 5,750 psi

Below Straddle Recorder Depth ft. Recorder Number Cap. psi

Drilling Contractor Royal Drilling, Inc. - Rig 1 Drill Collar Length -- ft. I.D. -- in.

Mud Type Chemical Viscosity 49 Weight Pipe Length -- ft. I.D. -- in.

Weight 9.4 Water Loss 9.6 cc. Drill Pipe Length 4,102 ft. I.D. 3 1/2 in.

Chlorides 2,000 P.P.M. Test Tool Length 27 ft. Tool Size 3 1/2 - IF in.

Jars: Make Sterling Serial Number 3 Anchor Length 35' perf. w/ 31' drill pipe Size 4 1/2 - FH in.

Did Well Flow? No Reversed Out No Surface Choke Size 1 in. Bottom Choke Size 5/8 in.

Main Hole Size 7 7/8 in. Tool Joint Size 4 1/2 - XH in.

Blow: 1st Open: 1/2 in. blow, building. Off bottom of bucket in 25 mins. Weak surface blow back during shut-in.
2nd Open: 1 in. blow, building. Off bottom of bucket in 23 mins. 1 in. blow back during shut-in.

Recovered 265 ft. of gas in pipe

25 ft of clean oil = .355750 bbls. (Grind out: 100%-oil) Gravity: 37 @ 60°

Recovered 20 ft. of slightly oil cut mud = .284600 bbls. (Grind out: 11%-oil; 89%-mud)

Recovered 65 ft. of oily gassy water cut mud = .924950 bbls. (Grind out: 18%-oil; 17%-gas; 19%-water; 46%-mud)

Recovered 60 ft. of slightly oily & gassy heavily cut mud = .853800 bbls. (Grind out: 25%-oil; 22%-gas; 24%-water;

Chlorides: 86,000 Ppm 29%-mud)

Recovered 170 ft. of TOTAL FLUID = 2.419100 bbls.

Remarks Tool Sample Grind Out: 25%-oil; 22%-gas; 24%-water; 29%-mud

Time Set Packer(s) 10:05 A.M. Time Started Off Bottom 1:05 P.M. Maximum Temperature 134°

Initial Hydrostatic Pressure (A) 2011 P.S.I.

Initial Flow Period Minutes 30 (B) 23 P.S.I. to (C) 56 P.S.I.

Initial Closed In Period Minutes 45 (D) 908 P.S.I.

Final Flow Period Minutes 45 (E) 62 P.S.I. to (F) 93 P.S.I.

Final Closed In Period Minutes 60 (G) 655 P.S.I.

Final Hydrostatic Pressure (H) 1981 P.S.I.

Diamond Testing

Page 2 of 2 Pages
General information Report

General Information

Company Name L.D. DRILLING, INC.

Contact	L.D. DAVIS	Job Number	T015
Well Name	LUNDGREN "A" #2 DST #4	Representative	TIM VENTERS
Unique Well ID	DST #4 MYRICK STATION/FT. SCOTT 4129-4195	Well Operator	L.D. DRILLING, INC.
Surface Location	31-14S-29W GOVE CO.	Report Date	2009/04/13
Well License Number		Prepared By	TIM VENTERS
Field	LUNDGREN		
Well Type	Vertical		

Test Type	Drill Stem Test		
Formation	DST #4 MYRICK STATION/ FT. SCOTT 4129-4195	Start Test Time	08:02:00
Well Fluid Type	01 Oil	Final Test Time	15:16:00
Start Test Date	2009/04/13		
Final Test Date	2009/04/13		
Gauge Name	30046		
Gauge Serial Number			

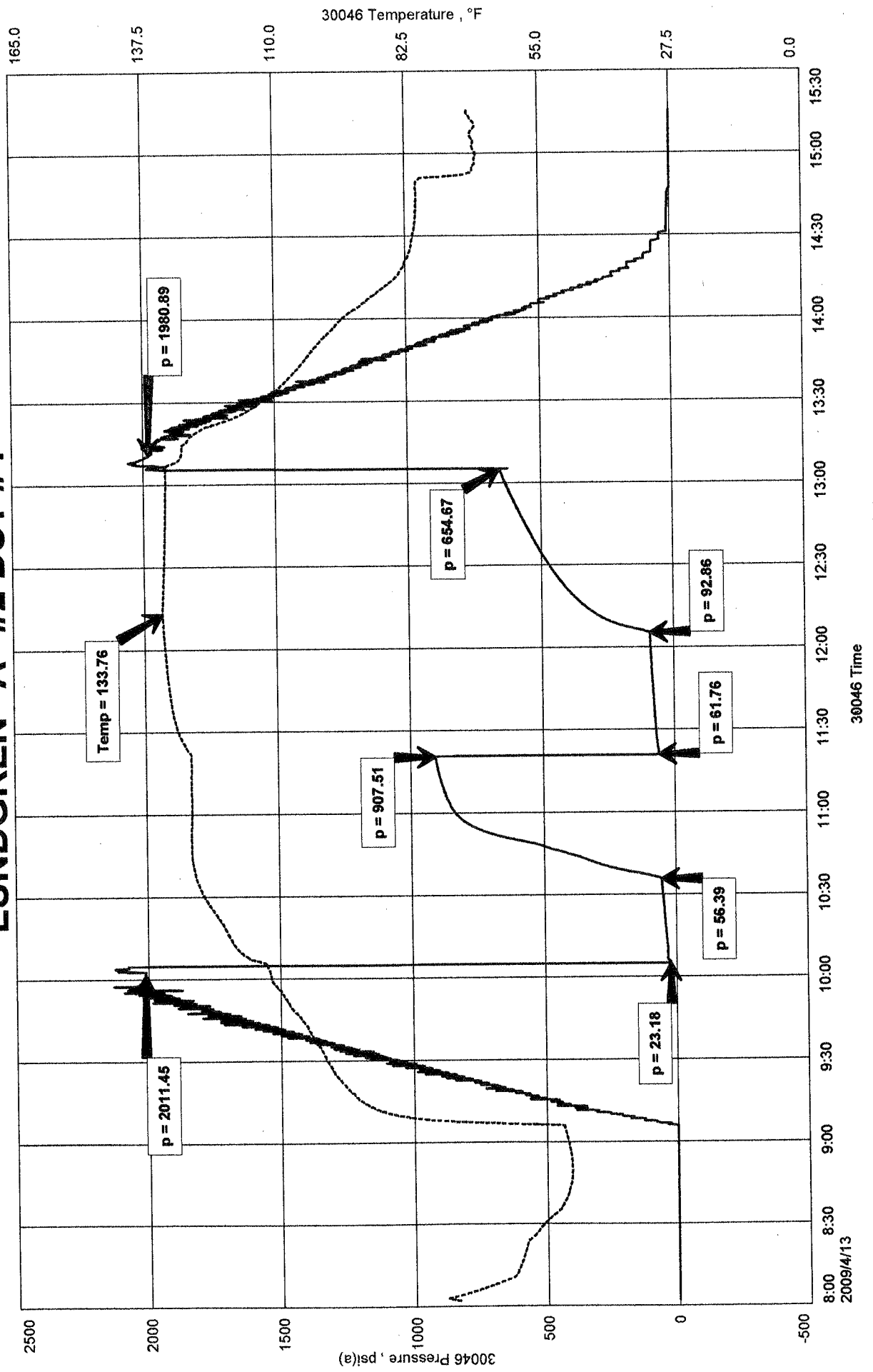
Test Results

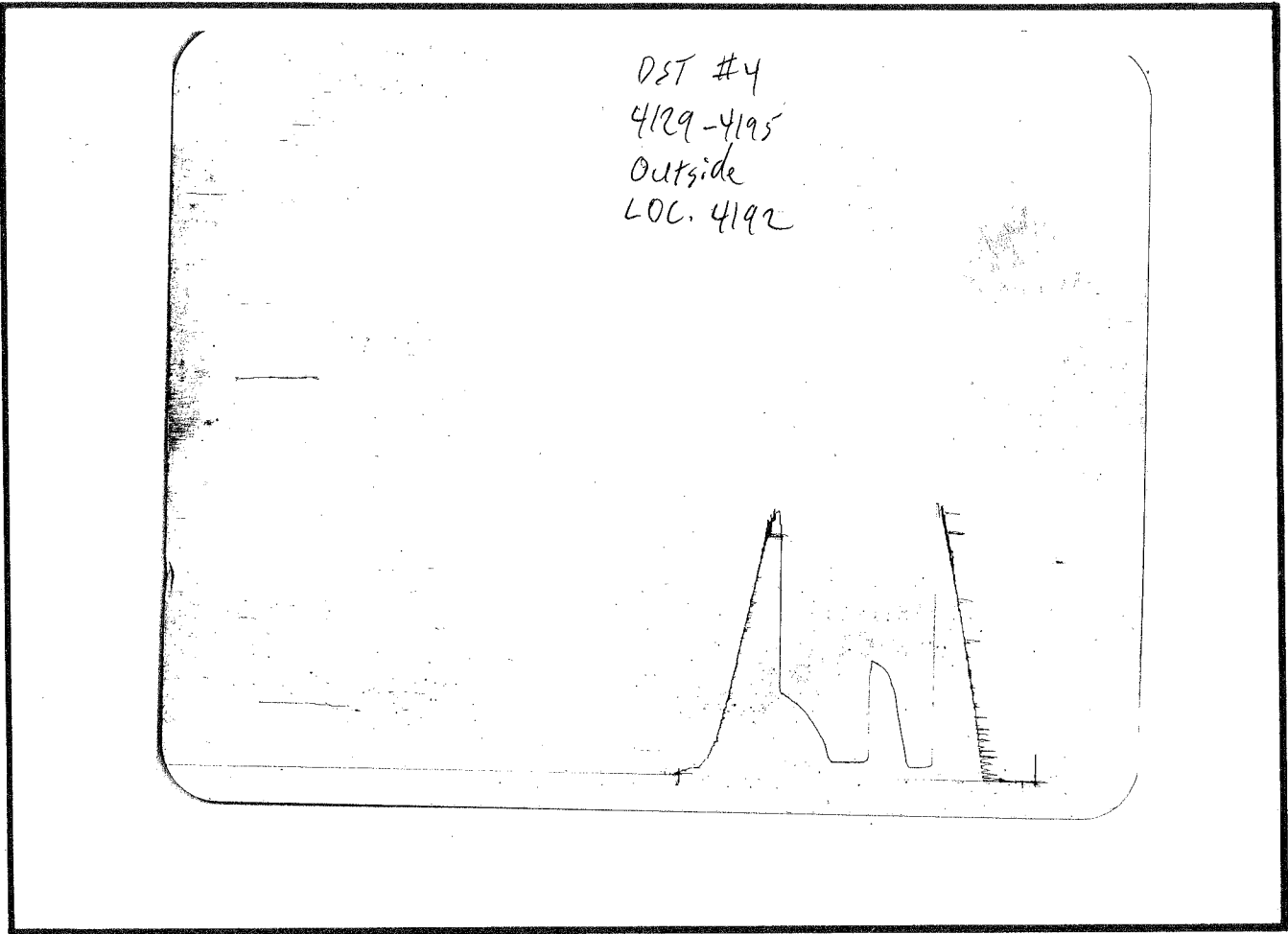
RECOVERED: 265' GAS IN PIPE	100% GAS			
25' CLEAN OIL	100% OIL			
20' SLIGHT OILCUT MUD	11% OIL	89% MUD		
65' OIL, GAS, & WATER CUT MUD	18% OIL	17% GAS	19% WATER	46% MUD
60' SLIGHT OIL, SLIGHT GAS, HEAVY WATER CUT MUD	25% OIL		22% GAS	24% WATER
OIL GRAVITY: 37	CHLORIDES: 86,000 PPM			
TOOL SAMPLE: 25% OIL	22% GAS	24% WATER	29% MUD	

LUNDGREN "A" #2 DST #4
 Formation: DST #4 MYRICK STATION/FT. SCOTT 4129-4195
 Job Number: T015

L.D. DRILLING, INC.
 DST #4 MYRICK STATION/FT. SCOTT 4129-4195
 Start Test Date: 2009/04/13
 Final Test Date: 2009/04/13

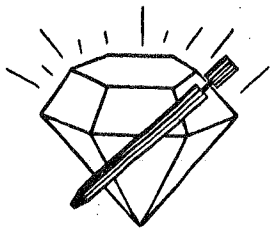
LUNDGREN "A" #2 DST #4





This is an actual photograph of recorder chart.

POINT	PRESSURE		Elec. Office Reading	PSI
	Field Reading			
(A) Initial Hydrostatic Mud	2011	2011		PSI
(B) First Initial Flow Pressure	23	23		PSI
(C) First Final Flow Pressure	56	56		PSI
(D) Initial Closed-in Pressure	908	908		PSI
(E) Second Initial Flow Pressure	62	62		PSI
(F) Second Final Flow Pressure	93	93		PSI
(G) Final Closed-in Pressure	655	655		PSI
(H) Final Hydrostatic Mud	1981	1981		PSI



DIAMOND TESTING
P.O. Box 157
HOISINGTON, KANSAS 67544
(620) 653-7550 • (800) 542-7313
STC 30046.D017

Company L. D. Drilling, Inc. Lease & Well No. Lundgren Trust "A" No. 2
Elevation 2621 KB Formation Cherokee/Johnson Effective Pay Ft. Ticket No. T017
Date 4-14-09 Sec. 31 Twp. 14S Range 29W County Gove State Kansas
Test Approved By Kim B. Shoemaker Diamond Representative Tim Venters

Formation Test No. 5 Interval Tested from 4,191 ft. to 4,260 ft. Total Depth 4,260 ft.
Packer Depth 4,186 ft. Size 6 3/4 in. Packer Depth ft. Size in.
Packer Depth 4,191 ft. Size 6 3/4 in. Packer Depth ft. Size in.
Depth of Selective Zone Set ft.

Top Recorder Depth (Inside) 4,192 ft. Recorder Number 30046 Cap. 5,000 psi
Bottom Recorder Depth (Outside) 4,257 ft. Recorder Number 13386 Cap. 5,750 psi
Below Straddle Recorder Depth ft. Recorder Number Cap. psi

Drilling Contractor Royal Drilling, Inc. - Rig 1 Drill Collar Length ft. I.D. in.
Mud Type Chemical Viscosity 49 Weight Pipe Length ft. I.D. in.
Weight 9.4 Water Loss 9.6 cc. Drill Pipe Length 4,164 ft. I.D. 3 1/2 in.
Chlorides 2,000 P.P.M. Test Tool Length 27 ft. Tool Size 3 1/2 - IE in.
Jars: Make Sterling Serial Number 3 Anchor Length 38' perf. w/31' drill pipe Size 4 1/2 - FH in.
Did Well Flow? No Reversed Out No Surface Choke Size 1 in. Bottom Choke Size 5/8 in.
Main Hole Size 7 7/8 in. Tool Joint Size 4 1/2 - XH in.

Blow: 1st Open: Weak surface blow, building to 6 1/2 ins. No blow back during shut-in.
2nd Open: 3 in., blow, building. Off bottom of bucket in 38 mins. No blow back during shut-in.

Recovered 150 ft. of gas in pipe
Recovered 50 ft. of gassy very heavy mud cut oil = .711500 bbls. (Grind out: 19%-gas; 40%-mud; 41%-oil)
Recovered 1 ft. of clean oil = .014230 bbls. (Grind out: 100%-oil)
Recovered 51 ft. of TOTAL FLUID = .725730 bbls.
Recovered ft. of

Remarks Tool Sample Grind Out: 10%-gas; 40%-mud; 50%-oil

Time Set Packer(s) 3:32 ~~P.M.~~ ^{A.M.} Time Started Off Bottom 6:32 ~~P.M.~~ ^{A.M.} Maximum Temperature 124°
Initial Hydrostatic Pressure (A) 2062 P.S.I.
Initial Flow Period Minutes 30 (B) 17 P.S.I. to (C) 22 P.S.I.
Initial Closed In Period Minutes 45 (D) 813 P.S.I.
Final Flow Period Minutes 45 (E) 20 P.S.I. to (F) 33 P.S.I.
Final Closed In Period Minutes 60 (G) 788 P.S.I.
Final Hydrostatic Pressure (H) 2052 P.S.I.

Diamond Testing

General information Report

General Information

Company Name L.D. DRILLING, INC.

Contact	L.D. DAVIS	Job Number	T016
Well Name	LUNDGREN TRUST "A" #2 DST #5	Representative	TIM VENTERS
Unique Well ID	DST #5 CHEROKEE/JOHNSON 4191-4260	Well Operator	L.D. DRILLING, INC.
Surface Location	31-14S-29W GOVE CO.	Report Date	2009/04/14
Well License Number		Prepared By	TIM VENTERS
Field	LUNDGREN		
Well Type	Vertical		

Test Type	Drill Stem Test		
Formation	DST #5 CHEROKEE/JOHNSON 4191-4260		
Well Fluid Type	01 Oil	Start Test Time	01:29:00
		Final Test Time	08:42:00
Start Test Date	2009/04/14		
Final Test Date	2009/04/14		
Gauge Name	30046		
Gauge Serial Number			

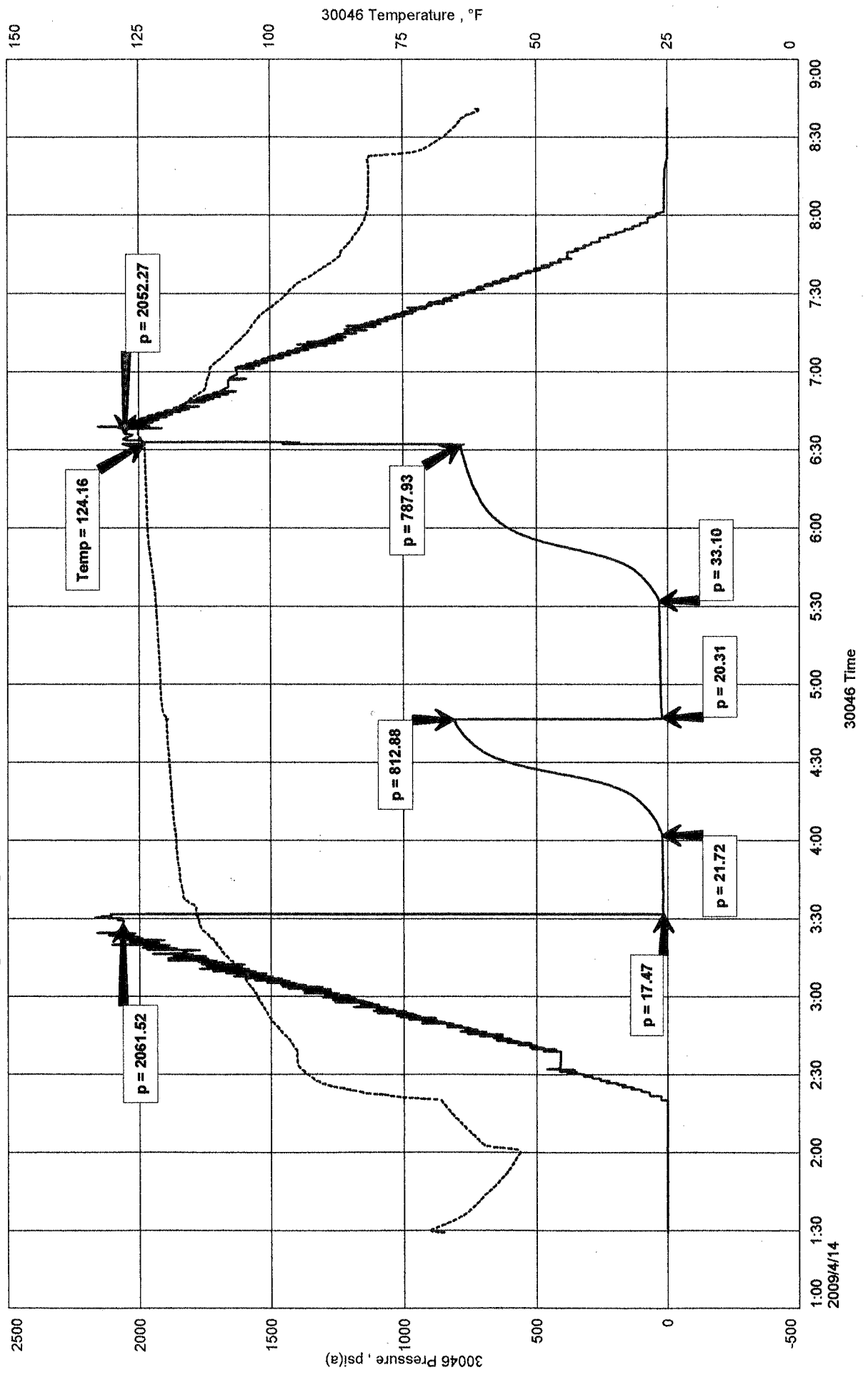
Test Results

RECOVERED: 150' GAS IN PIPE			100% GAS	
50' GAS, VERY HEAVY MUD CUT OIL		41% OIL	19% GAS	40% MUD
1' CLEAN OIL		100% OIL		
TOOL SAMPLE: 50% OIL	10% GAS	40% MUD		

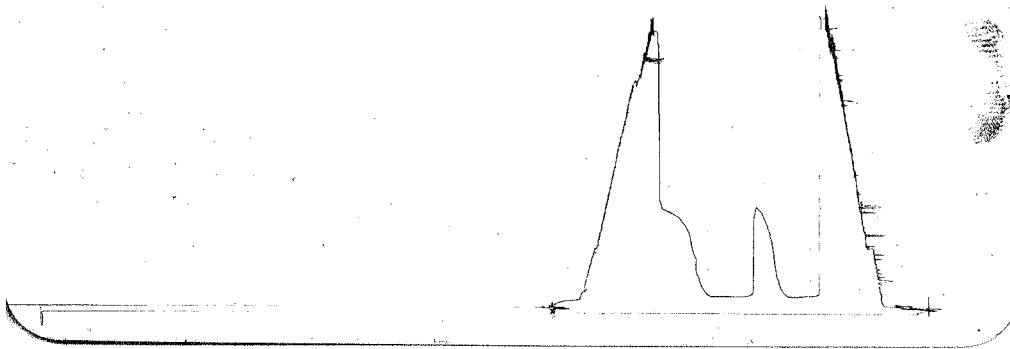
LUNDGREN TRUST "A" #2 DST #5
 Formation: DST #5 CHEROKEE/JOHNSON 4191-4260
 Pool: LUNDGREN
 Job Number: T016

L.D. DRILLING, INC.
 DST #5 CHEROKEE/JOHNSON 4191-4260
 Start Test Date: 2009/04/14
 Final Test Date: 2009/04/14

LUNDGREN TRUST "A" #2 DST #5

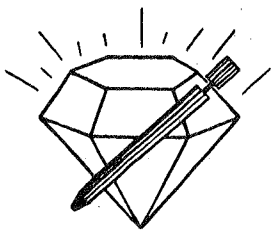


DST #5
 4191-4260
 Outside
 LOC. 4257



This is an actual photograph of recorder chart.

POINT	PRESSURE		Elec. Office Reading	PSI
	Field Reading			
(A) Initial Hydrostatic Mud	2062	2062		PSI
(B) First Initial Flow Pressure	17	17		PSI
(C) First Final Flow Pressure	22	22		PSI
(D) Initial Closed-in Pressure	813	813		PSI
(E) Second Initial Flow Pressure	20	20		PSI
(F) Second Final Flow Pressure	33	33		PSI
(G) Final Closed-in Pressure	788	788		PSI
(H) Final Hydrostatic Mud	2052	2052		PSI



DIAMOND TESTING

P.O. Box 157

HOISINGTON, KANSAS 67544

(620) 653-7550 • (800) 542-7313

STC 30046.D018

Company L. D. Drilling, Inc. Lease & Well No. Lundgren Trust "A" No. 2

Elevation 2621 KB Formation Mississippian Dolomite Effective Pay -- Ft. Ticket No. T018

Date 4-14-09 Sec. 31 Twp. 14S Range 29W County Gove State Kansas

Test Approved By Kim B. Shoemaker Diamond Representative Tim Venters

Formation Test No. 6 Interval Tested from 4,277 ft. to 4,320 ft. Total Depth 4,320 ft.

Packer Depth 4,272 ft. Size 6 3/4 in. Packer Depth -- ft. Size -- in.

Packer Depth 4,277 ft. Size 6 3/4 in. Packer Depth -- ft. Size -- in.

Depth of Selective Zone Set ft.

Top Recorder Depth (Inside) 4,278 ft. Recorder Number 30046 Cap. 5,000 psi

Bottom Recorder Depth (Outside) 4,317 ft. Recorder Number 13386 Cap. 5,750 psi

Below Straddle Recorder Depth ft. Recorder Number Cap. psi

Drilling Contractor Royal Drilling, Inc. - Rig 1 Drill Collar Length -- ft. I.D. -- in.

Mud Type Chemical Viscosity 64 Weight Pipe Length -- ft. I.D. -- in.

Weight 9.4 Water Loss 8.8 cc. Drill Pipe Length 4,250 ft. I.D. 3 1/2 in.

Chlorides 1,000 P.P.M. Test Tool Length 27 ft. Tool Size 3 1/2 - IF in.

Jars: Make Sterling Serial Number 3 Anchor Length 43 ft. Size 4 1/2 - FH in.

Did Well Flow? No Reversed Out No Surface Choke Size 1 in. Bottom Choke Size 5/8 in.

Main Hole Size 7 7/8 in. Tool Joint Size 4 1/2 - XH in.

Blow: 1st Open: Weak surface blow, building to 1 in. No blow back during shut-in.

2nd Open: Weak surface blow, throughout. No blow back during shut-in.

Recovered 20 ft. of very slightly oil cut mud = .284600 bbls. (Grind out: 1%-oil; 99%-mud)

Recovered ft. of

Recovered ft. of

Recovered ft. of

Recovered ft. of

Remarks Tool Sample Grind Out: 2%-oil; 98%-mud

Time Set Packer(s) 9:17 ~~P.M.~~ ^{XXM.} Time Started Off Bottom 12:27 ~~P.M.~~ ^{A.M.} Maximum Temperature 128°

Initial Hydrostatic Pressure (A) 2110 P.S.I.

Initial Flow Period Minutes 30 (B) 17 P.S.I. to (C) 20 P.S.I.

Initial Closed In Period Minutes 45 (D) 1116 P.S.I.

Final Flow Period Minutes 45 (E) 21 P.S.I. to (F) 25 P.S.I.

Final Closed In Period Minutes 70 (G) 1039 P.S.I.

Final Hydrostatic Pressure (H) 2071 P.S.I.

Diamond Testing

Page 2 of 2 Pages
General information Report

General Information

Company Name L.D. DRILLING, INC.

Contact	L.D. DAVIS	Job Number	T017
Well Name	LUNDGREN TRUST "A" #2	Representative	TIM VENTERS
Unique Well ID	DST #6 MISSISSIPPIAN DOL. 4277-4320	Well Operator	L.D. DRILLING, INC.
Surface Location	31-14S-29W	Report Date	2009/04/15
Well License Number		Prepared By	TIM VENTERS
Field	LUNDGREN		
Well Type	Vertical		

Test Type	Drill Stem Test		
Formation	DST #6 MISSISSIPPIAN DOL. 4277-4320		
Well Fluid Type	01 Oil	Start Test Time	19:34:00
		Final Test Time	02:28:00
Start Test Date	2009/04/14		
Final Test Date	2009/04/15		
Gauge Name	30046		
Gauge Serial Number			

Test Results

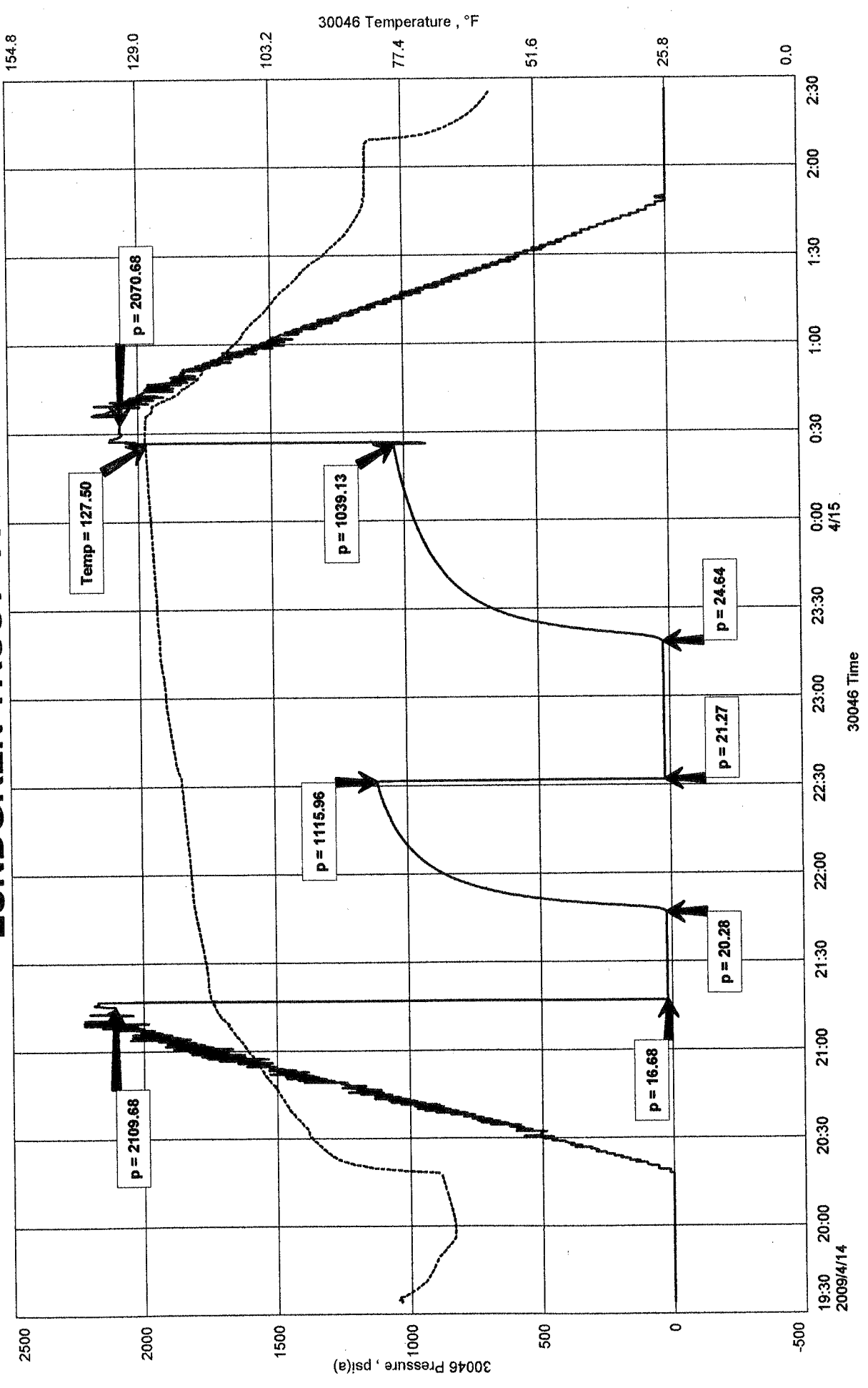
RECOVERED: 20' VERY SLIGHT OIL CUT MUD 1% OIL 99% MUD

TOOL SAMPLE: 2% OIL 98% MUD

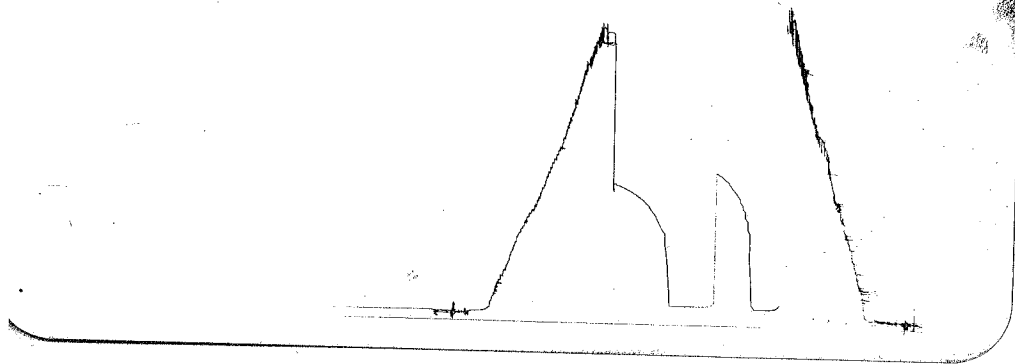
LUNDGREN TRUST "A" #2
 Formation: DST #6 MISSISSIPPIAN DOL. 4277-4320
 Pool: LUNDGREN
 Job Number: T017

L.D. DRILLING, INC.
 DST #6 MISSISSIPPIAN DOL. 4277-4320
 Start Test Date: 2009/04/14
 Final Test Date: 2009/04/15

LUNDGREN TRUST "A" #2



DST #6
 4277-4320
 Outside
 LOC. 4319



This is an actual photograph of recorder chart.

POINT	PRESSURE		Elec. Office Reading	PSI
	Field Reading			
(A) Initial Hydrostatic Mud	2110	2110		PSI
(B) First Initial Flow Pressure	17	17		PSI
(C) First Final Flow Pressure	20	20		PSI
(D) Initial Closed-in Pressure	1116	1116		PSI
(E) Second Initial Flow Pressure	21	21		PSI
(F) Second Final Flow Pressure	25	25		PSI
(G) Final Closed-in Pressure	1039	1039		PSI
(H) Final Hydrostatic Mud	2071	2071		PSI