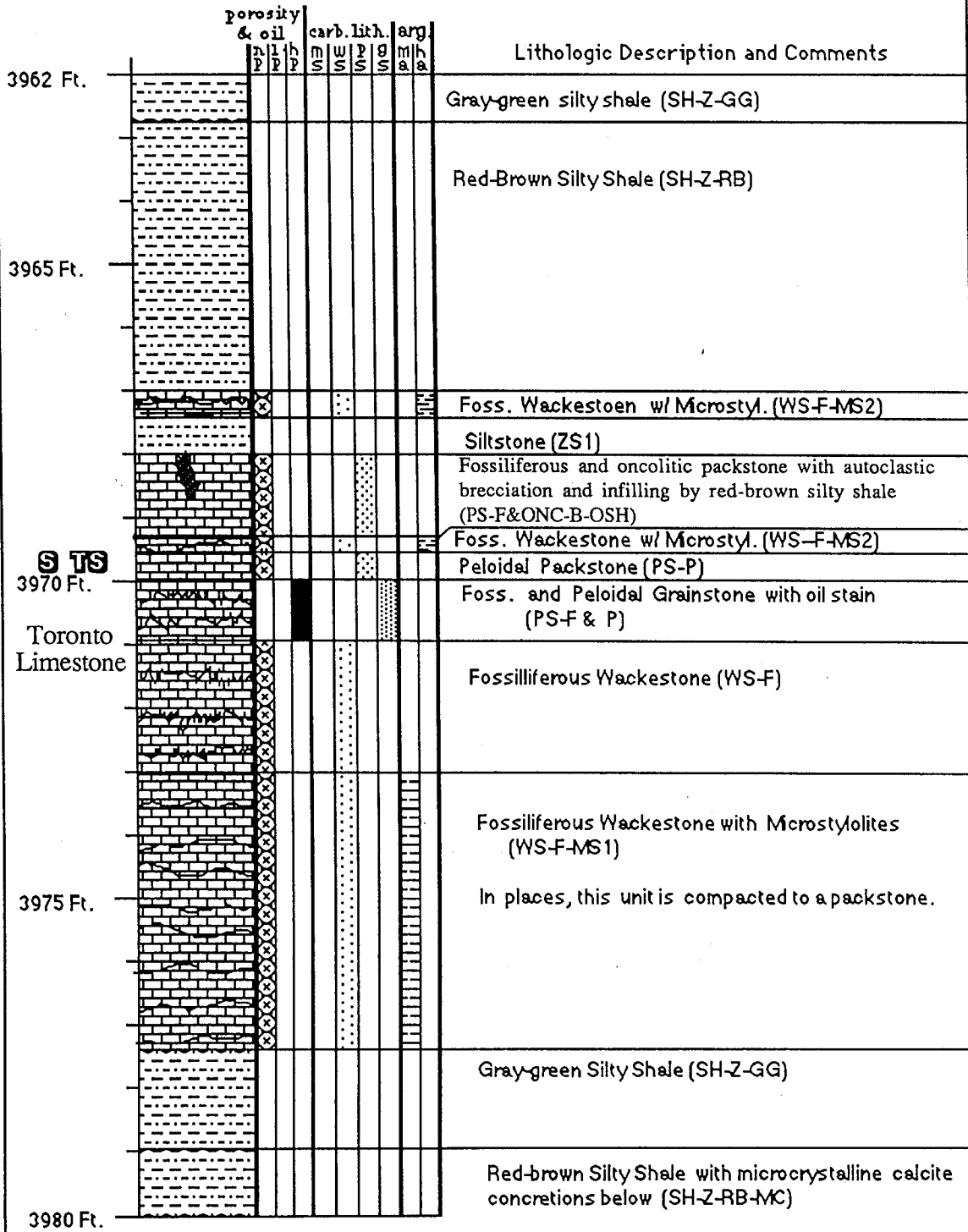
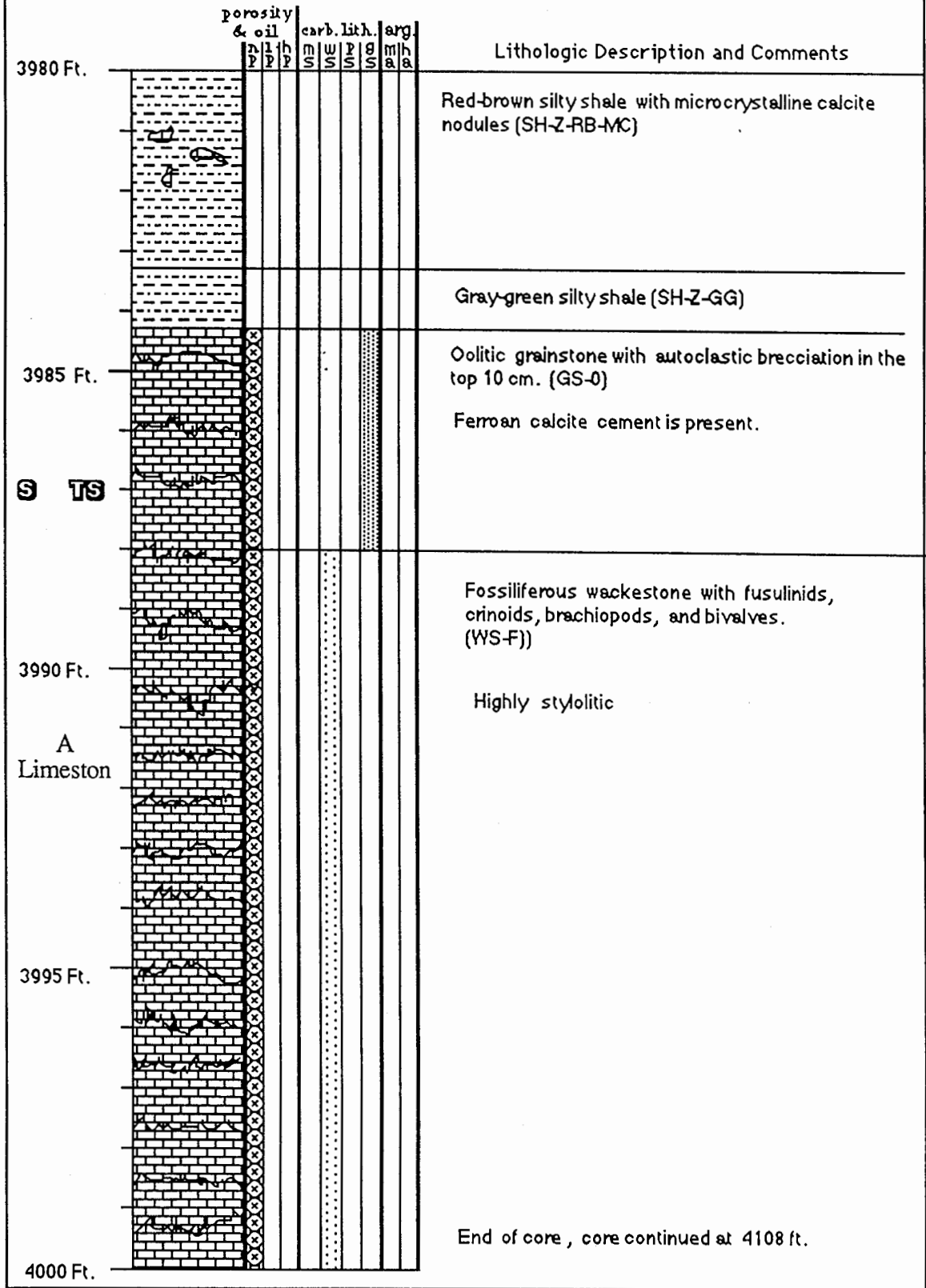


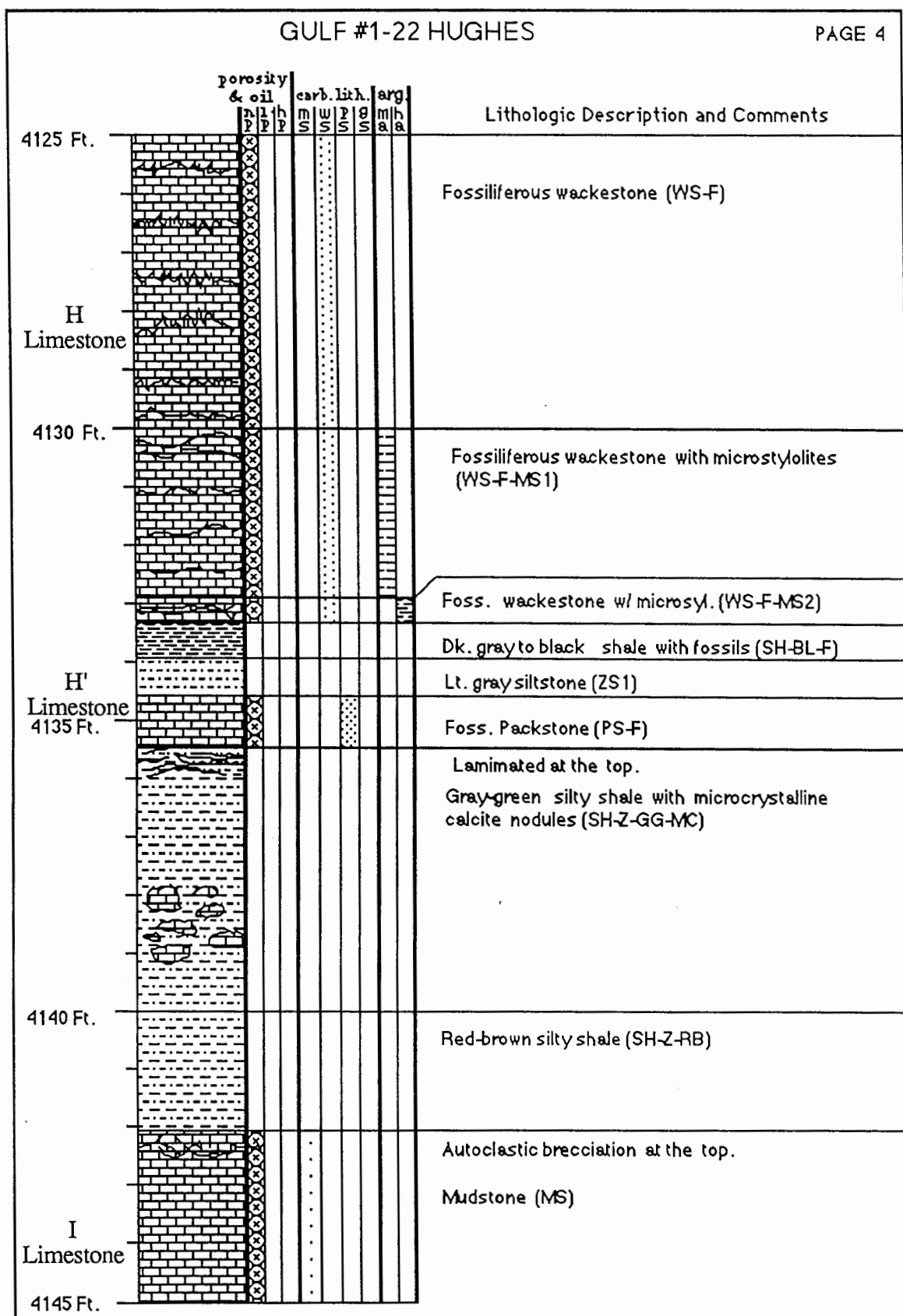
C SW SW, Sec. 22-T9S-R29W
 Sheridan County, Kansas
 Drilled March, 1978



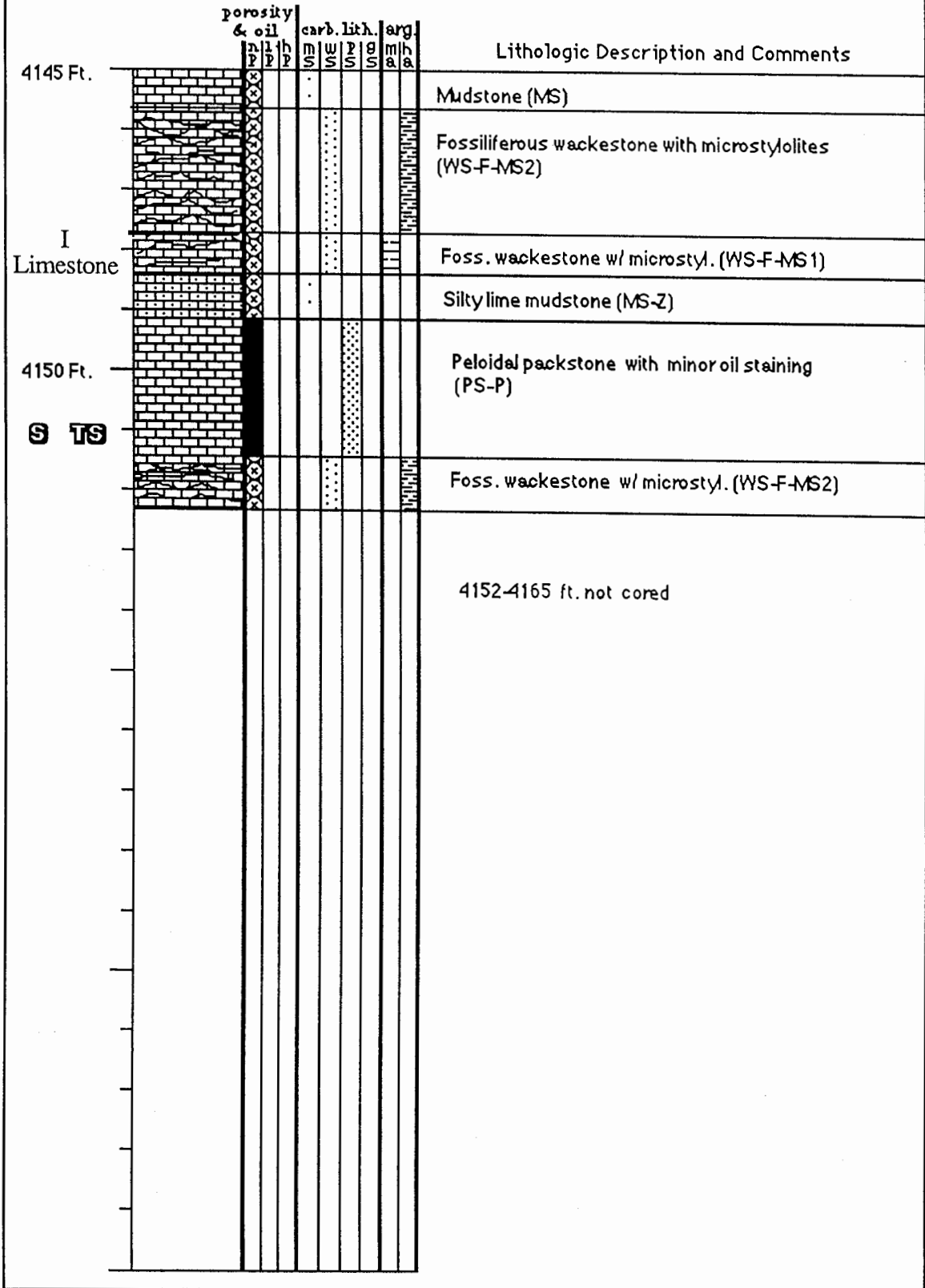
S TS
 3970 Ft.
 Toronto Limestone

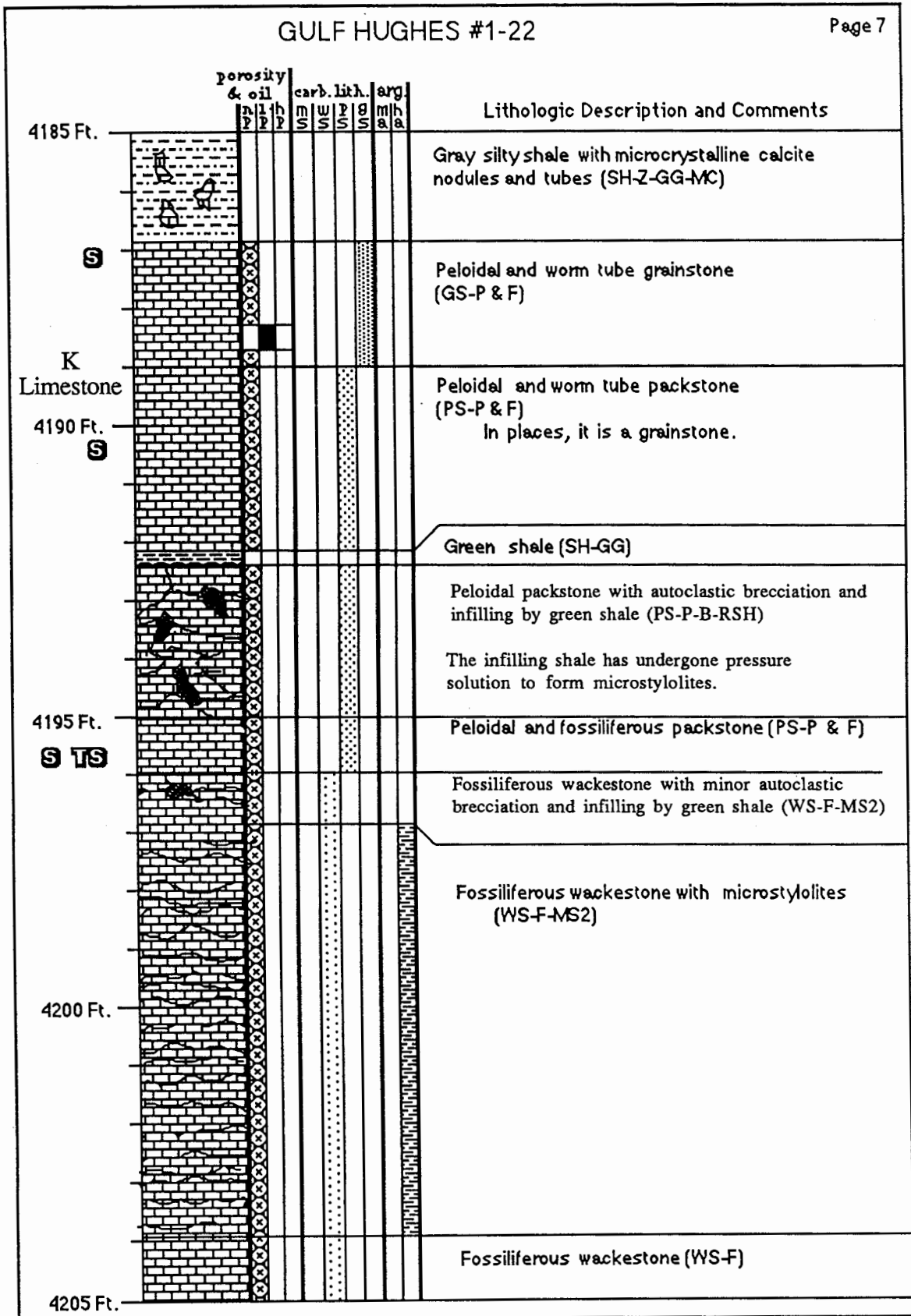
GULF #1-22 HUGHES

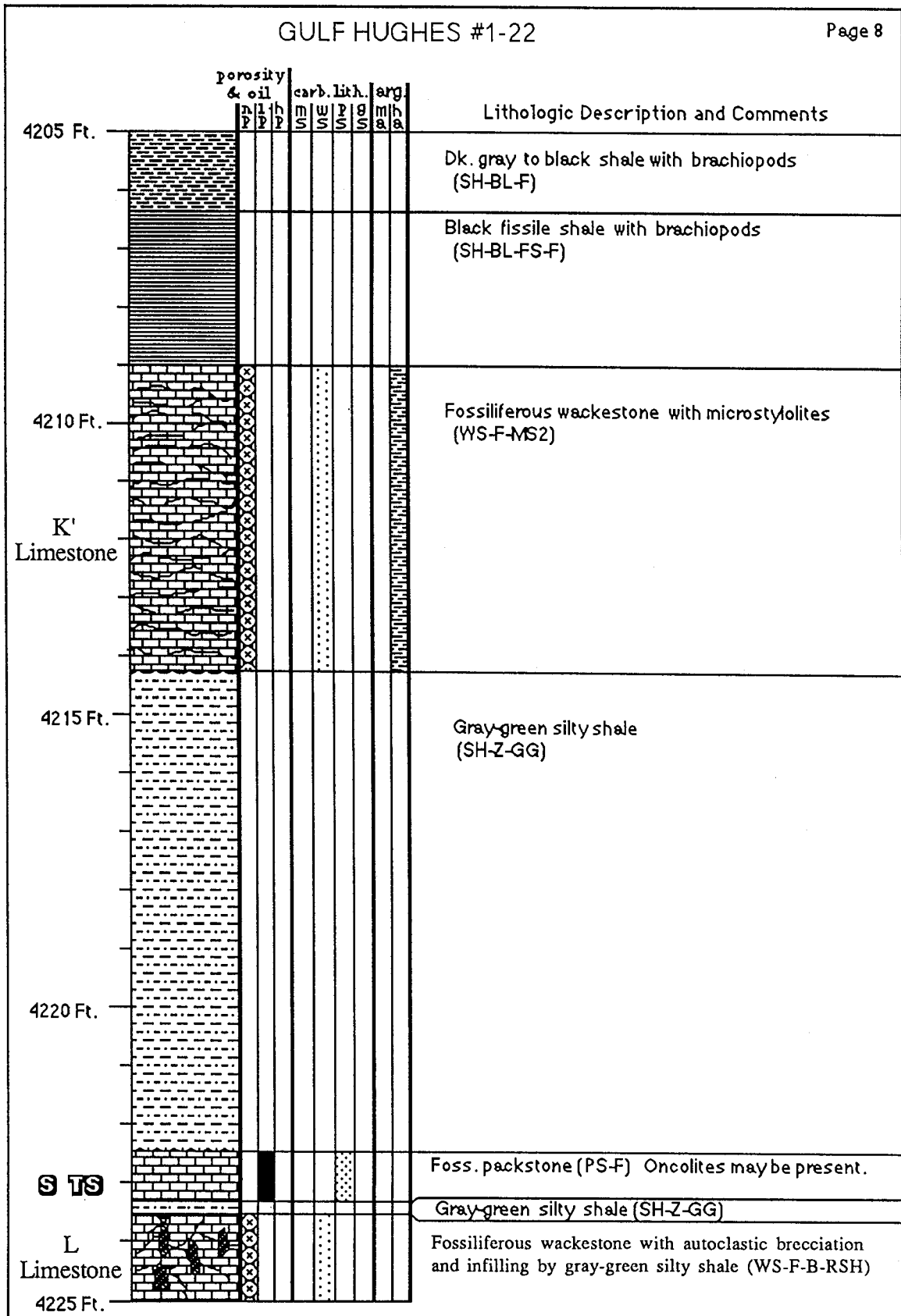


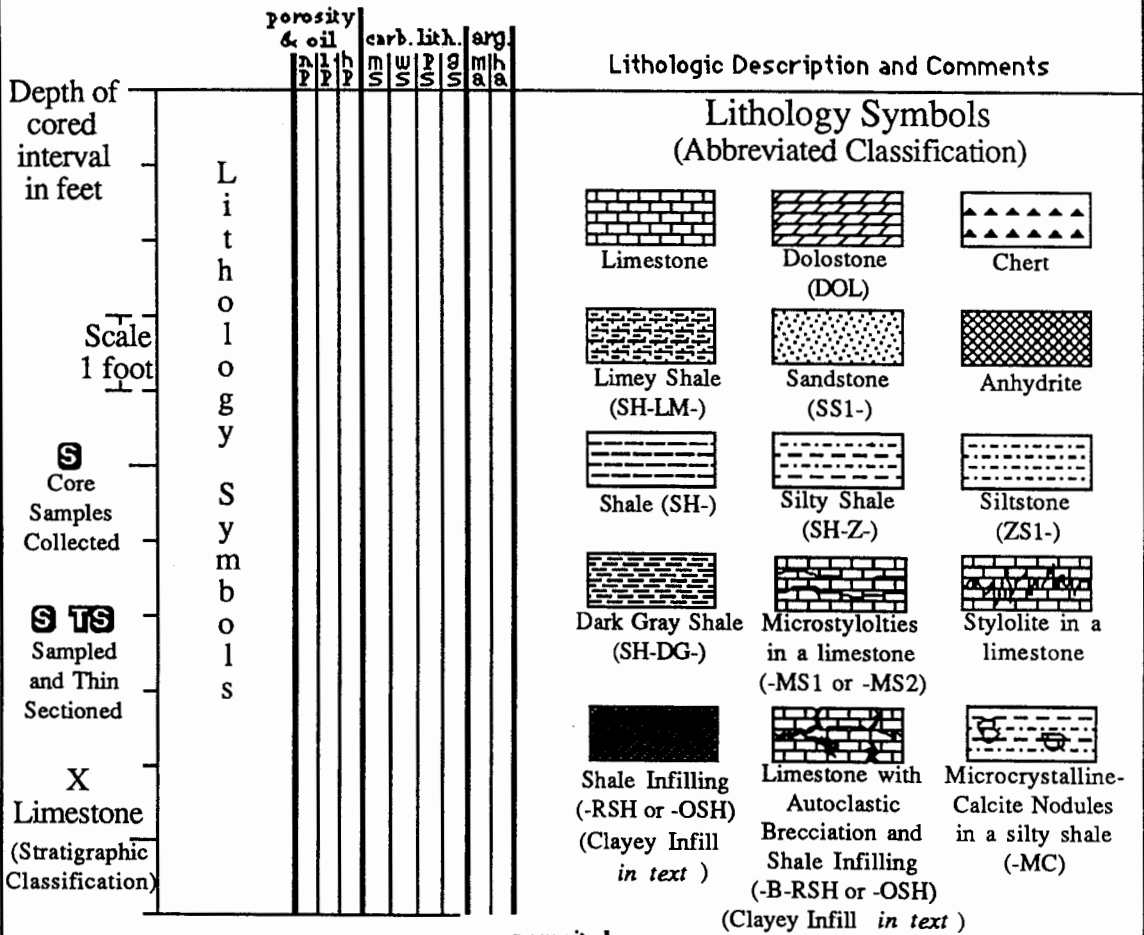


GULF #1-22 HUGHES

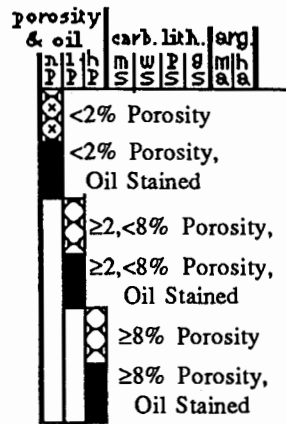




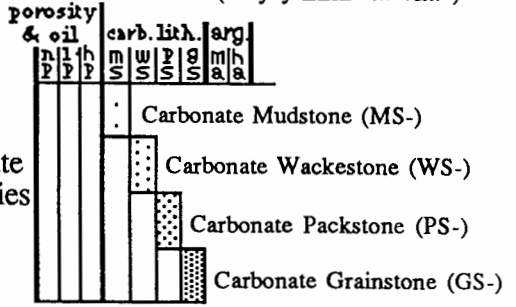




Porosity ranges based on visual estimates during core description



Carbonate Lithologies



Argillaceous Content

