

INHIBITED ACIDIZING
WELL REPAIRING
FORMATION CLEANER
MUD ACID
CEMENT REMOVAL



PACKER SEAL
PUMP RENTAL
ACIDIZING PACKER
INDUSTRIAL ACIDIZING
PARAFFIN SOLVENTS

LAKIN, KANSAS
PHONES 2543 - 2512 - 3711

PLAINVILLE, KANSAS
PHONES 201 - 565

31-14-29W
Sample #1 Mortimer O'Connor

- 4261-01 = Brown fine sand to fine platy lime - streaks parallel calcite streaks with wavy streaks appearing shale #4 1/2. Streaks separate brown when dry. Streak 2 - all pieces wavy shaly sand
- 4261-02 = Lt. brown m. shale. It is not a sand nodules brown and fine clay platy calcite lime - becoming all brown & brown calcite in platy lime
- 4261-03 = Brown fine platy calcite lime - fair shaly & very sh. stain all of plomite shaly @ 44%. Brown shaly lime of very sh. thin shaly calcite - thin shaly calcite @ 29. 1/2" buff
- 4261-04 = buff sand fine shaly platy lime - wavy scattered of quantity. Bleeding to brown & lt. oil, shaly & water in pt. Some interstitial shaly partings - pale green, @ 42. 1/2" scattered calcite in base with calcite - vertical & horizontal bedding & some calcite & water @ 22 1/2"
- 4261-05 = Brownish lime - vertical internal fracture carrying water. Small brown nodules in the lime - becoming very finely fractured, streaks brown shaly calcite lime. Becoming very fine @ 66. Brown shaly lime 50%. Non-fossiliferous shaly green shale laminations. Black shaly laminations @ 55. Lt. brown lime calcite - platy of fossils calcite & small fossil material @ 53 1/2 - 5.
- 4261-06 = Lt. non mica shaly - flaky, wavy & shaly brown shaly lime. Some of sand nodules buff shaly. Some red shaly. Some calcite nodules in shaly - to thumb nail size.
- 4261-07 = Lt. brownish shaly of sand and fine sand. Some sand large brownish sand nodules sand green. Brown 5" nodules, shaly shaly wavy yellow shaly. Partly brown sandy shaly @ 42 1/2. 7"
- 4261-08 = Fine sand sandy shaly. Sand of sand grains sand. Some fine shaly shaly nodules. Brown m. shaly shaly 57. 3" brown tinted fine shaly shaly. Abundant mud shaly. The base is shaly, sand grains sand. Some scattered nodules brown fine shaly platy lime - becoming more shaly 58%
- 4261-09 = Shaly sand shaly wavy sand & nodules brown shaly shaly mud small 1/2" nodules shaly shaly brown shaly shaly @ 4260 - scattered spots shaly.

- 4261-10 = Fair shaly, nodules - banded shaly. Brown reddish brown to gray in green shaly fine sand - Green wavy shaly shaly - pale & bright @ 6. 3" Brown shaly banded, shaly shaly shaly 60%
- 4261-11 = Gray fine to coarse sand & shaly sand - very shaly overall banded shaly calcite nodules becoming more shaly @ 61 1/2 some yellow tinted sand grains.
- 4261-12 = Fine shaly to gray shaly shaly - highly shaly wavy shaly to shaly shaly shaly 50. Sand. Some oxide coloration red & yellow - shaly becoming shaly 62 1/2. Some yellow coloration (limonite?) - abundant fine colored shaly shaly in shaly shaly 63 1/2 - highly colored (limonite?) shaly shaly shaly yellow @ 64. 2 - 4"
- 4261-13 = Mostly shaly shaly shaly, yellowish brown & gray shaly. Shaly very green (grass green) wavy @ 64. 2" sand nodules shaly 65 1/2. Green shaly shaly shaly of thin seams brown mud fine shaly @ 66. Green wavy shaly - shaly 66-66 1/2
- 4261-14 = Brown calcareous - shaly appearing in pt. thin beds. 66 1/2 green bright wavy shaly @ 67. Much vertical fracturing @ 67 1/2 scattered paper thin calcite seams fine shaly shaly shaly 67 1/2

Fossiliferous
Med - Coarsely X lime LS
4350-74 24 Byn
4348-50 2' OR gray - br shaly
4345-48 3' light gray fine X lime LS
4331-45 14 Byn fine X lime LS
4329-31 2' OR gray - br med X lime LS
4324-29 5' light gray fine X lime LS
4324-43 29

This is as easy to read as the original so I read only the copy

INHIBITED ACIDIZING
WELL REPAIRING
FORMATION CLEANER
MUD ACID SLOW ACID
CEMENT REMOVAL



LAKIN, KANSAS
PHONES 2543 - 2512 - 3711

PACKER SEAL
PUMP RENTAL
SLOW ACIDIZING PACKER
INDUSTRIAL ACIDIZING
PARAFFIN SOLVENTS

PLAINVILLE, KANSAS
PHONES 201 - 565

Case #2

- 4273-79 - Buff brown calcareous lime. 45% fracture w/ green & black shale seams. Brown fine blue dolomite lime @ 74 & thin 2 seam sh. gray shale @ 74. Scattered calcite w/ opaque chert @ 77. 2' lime gray fine shale @ 78. 45% fracture @ 79 w/ bit chert shale.
- 4277-79 - Brown fine blue shale, w/ pt. of red chert glassiness & blue with trace chert calcite. Very sh. spotted red bleeding @ 80. Fairly sh. w/ gray part @ 80 porosity.
- 4280-79 - Brown dolomite w/ abundant hard druse calcite. Good ppt. sh. irregular porosity & spotted with bleeding. With internal bleeding fair bleeding. Sh. scattered w/ porosity. In gray brown lime dolomite lime @ 81 1/2. Sp. calcite @ 81.2. Staining good intensity @ 83 & 84. Sh. heavy staining w/ yellow stain @ 84. Grayish shale @ 85. Brown shale streaks. In very sh. stain w/ ppt. porosity.
- 4281-80 - Grayish shale w/ very purple in thin seams & scattered purple specks. Good scattered w/ porosity & fair mod. internal bleeding from part @ 86. Sh. irregular porosity. Calcite bands w/ water. Becoming more ppt. per w/ lighter staining @ 87. Sp. highly irregular calcite behind pore - w/ head show with much water.
- 4286-88 - Sh. to fine blue brown shale. No por. or stain & fairly sh. adar.
- 4288-89 - Gray to brown fine shale. Scattered seams calcite. Seams ppt. por. brown shale w/ scattered ppt. por. & very sh. staining. Fair bleeding @ 89. Fair bleeding. Fair ppt. por. @ 90. Scattered brown chert @ 91. Sh. Gray fine shale - very scattered seams ppt. por. @ 91. 92. Brown silts.
- 4292-89 - Gray fine to sh. highly purple shale w/ thin brown fossil roots.
- 4295-95 - Fine sh. to very fine shale. Brown scattered calcite nodules. Thin seams. Gray sh. flakey shale @ 95 w/ vertical fracture w/ red bit chert shale.
- 4295-90 - Sh. brown to gray fine sh. to sh. shale. Sh. of purple sh. sh. scattered. 1' seam gray shale @ 96 1/2. Scattered spot brown mid sh. thin lime - shale becoming more buff & porous @ 97. Scattered ppt. & sh. along fine massive bit shale seal. Thin layer highly spotted bit shale @ 98. Fossil roots @ 99. Waffle cord @ 99. Large bit chert shale @ 100.
- 4300-02 - Sh. brown to brown fine shale to sh. porous shale.
- 4307-02 - Brown sh. to gray shale shale w/ abundant calcite thin - fine calcite green in abundance.

INHIBITED ACIDIZING
WELL REPAIRING
FORMATION CLEANER
MUD ACID SLOW ACID
CEMENT REMOVAL



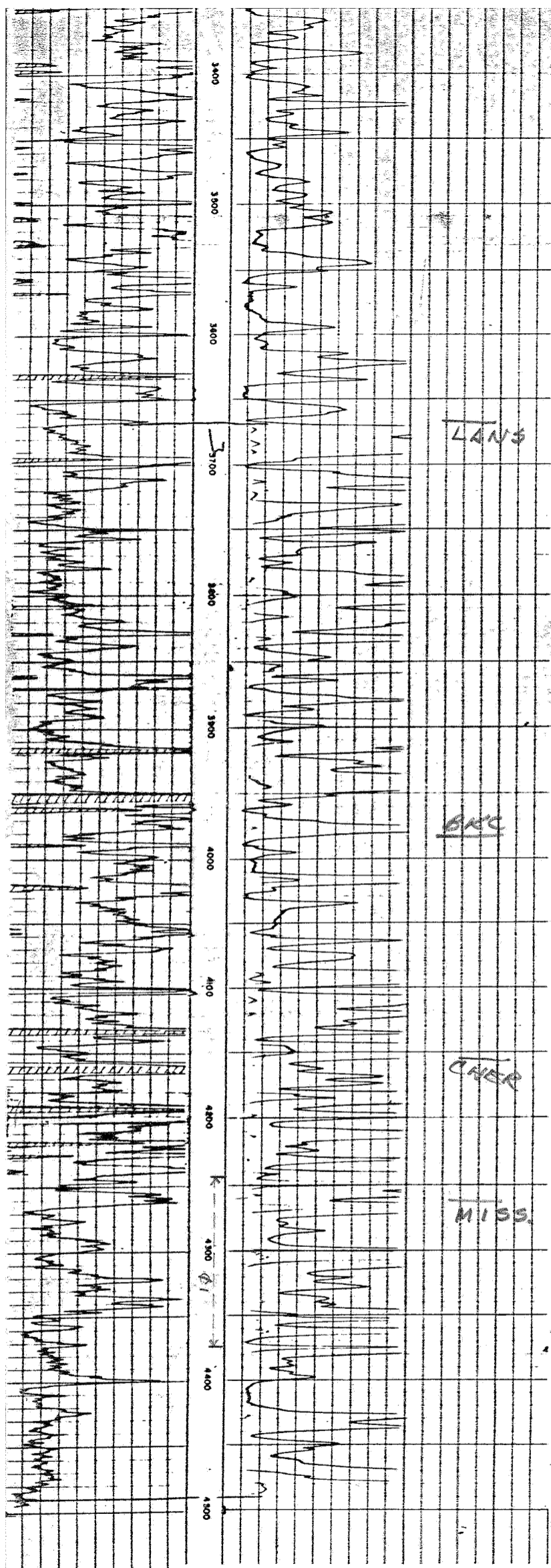
LAKIN, KANSAS
PHONES 2543 - 2512 - 3711

PACKER SEAL
PUMP RENTAL
SLOW ACIDIZING PACKER
INDUSTRIAL ACIDIZING
PARAFFIN SOLVENTS

PLAINVILLE, KANSAS
PHONES 201 - 565

#2

- 4302-12 1/2 - Sh. brown to platy brown - appears fossiliferous when wet - possibly calcite? (Fossils rounded to sh. of sh. brown shale & sh. thin border) Fair fossils @ 304. Becoming calcareous w/ vertical fracturing @ 305. In sh. carbon - thin bit chert seam @ 306. Brown scattered thin seams bit shale. Scattered pink sh. blue lime & date lime from 09-11. 45% por. @ 11 1/2. Multishale bit - Pink calcite @ 12. Sh. shale shale @ 11.9 w/ fine calcite lime nodules.
- 4312 1/2 - 15 1/2 - Brown to sh. sh. shale lime w/ scattered brachiopod shells. Scattered shale parting w/ fine purple sh. @ 15 1/2 & 16 1/2. Scattered calcite nodules @ 15.
- 4315 1/2 - 18 - Gray massive shale lime - seams brown massive shale - bit (very sh. shale seam) @ 16 1/2. Low fracturing @ 17-17 1/2. Gray shale along fracture plane.
- 4318 - 20 1/2 - Brown to buff massive shale & shale lime. Lightly fractured vertically.
- 4323 1/2 - 24 - Sh. brown massive shale - scattered calcite nodules.



Sinclair 1 - M.O'Conner
SESE N. 31-14-29W elev. 2627' KB.

