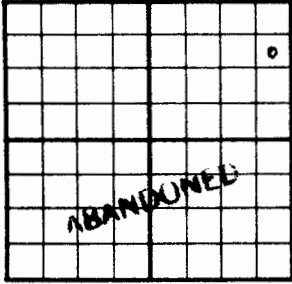


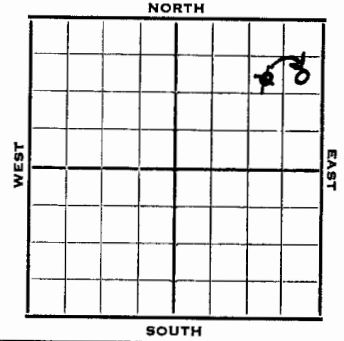
County Saline State Kansas
 Sec. 24 (Blk. Twp.) 14 (Sur. Rge.) 3W Map No.
 Operator Northwestern Drlg.
 Well No. 1 Farm Anderson
 Elev. 1227 Location SE NE NE

Sec. 24 Twp. 14 R. 3W
 Well No. #1 Anderson Farm
Northwestern Drlg. Co. Company
 Contractor



990 Ft. from N Line NE
330 Ft. from E Line Quarter
 1st. Report
 Completion NOV 26 1952
 Remarks
 Spudding Date 10-16-52

990 Ft. from N. Line
 Ft. from S. Line
330
990 Ft. from E. Line
 Ft. from W. Line
~~SE NE NE~~
~~SW NE NE~~
 NE $\frac{1}{4}$



Drlg. Data D & A TD 3212
8" @ 145 Miss. 2618 Kh. 2922
Hunton 3044 Maq. sh. 3112 Maq. dol. 3204
TD 3204 5" @ 3204 29/ 2651-64 DD 3212
5 goph 1000 A wtr.
D & A

1952 Elev. 1227' REPORT

10/22 Spud 10-16-52
8" @ 145'
Drlg. 1881'
10/29 Miss 2618' KH 2922' Htn 3044'
Mq sha 3112' Mq Dol 3204'
RTD 3204 1/2' 5" @ 3204 1/2'
11/5 CO 29/ 2651-64 dead oil & wtr.
11/12 DD 3212 TD 5 galoph 1000 A
sq. off CO
11/20 Pipe split 3100'
11/26 Spud 10-16-52
D & A TD 3212' 8" @ 145
Miss 2618' Kh. 2922' Hunton 3044'
Maq. sh. 3112' Maq. dol. 3204'
TD 3204 5" @ 3204 29/2651-64
DD 3212' 5 @OPH 1000 A wtr.
D & A

J. G. McGEHEE

ABANDONED

Section 24 Township 14 Range 3W

Well No. #1 Anderson

Company Northwestern Drlg. Co.

