



POST OFFICE BOX 169

GREAT BEND, KANSAS 67530

DRILL-STEM TEST DATA

Well Name	Kratky	Test No.	1
Well Number	2	Zone Tested	
Company	Larry Stephenson	Date	4/9/72
Comp. Rep.	Richard M. Foley	Tester	Willie Bowman
Contractor	H30, Inc.	Ticket No.	7748
Location	Ellsworth 30-14-10	Elevation	

Recorder No. 3600 Clock Range 12 hr Recorder No. 3400 Clock Range 12 hr

Depth 2117 Depth 2143

Initial Hydro Mud Press. 1215 Initial Hydro Mud Press. 1225

Initial Shut-in Press. 680 Initial Shut-in Press. 670

Initial Flow Press. 32-44 Initial Flow Press. 28-42

Final Flow Press. 50-77 Final Flow Press. 48-68

Final Shut-in Press. 602 Final Shut-in Press. 600

Final Hydro Mud Press. 1200 Final Hydro Mud Press. 1210

Temperature 83 Tool Open Before I. S. I. 30 Mins.

Mud Weight 10.5 Viscosity 41 Initial Shut-in 60 Mins.

Fluid Loss Flow Period 120 Mins.

Interval Tested 2122-2145 Final Shut-in 60 Mins.

Top Packer Depth 2122 Surface Choke Size 5/8

Bottom Packer Depth Bottom Choke Size 5/8

Total Depth 2145 Main Hole Size 7 7/8

Drill Pipe Size 4 1/2 FH Wt. Rubber Size 6 3/4

Drill Collar I. D. Ft. Run

Recovery—Total Feet 120

Recovered 120 Feet Of Muddy water (no show)

Recovered Feet Of

Recovered Feet Of

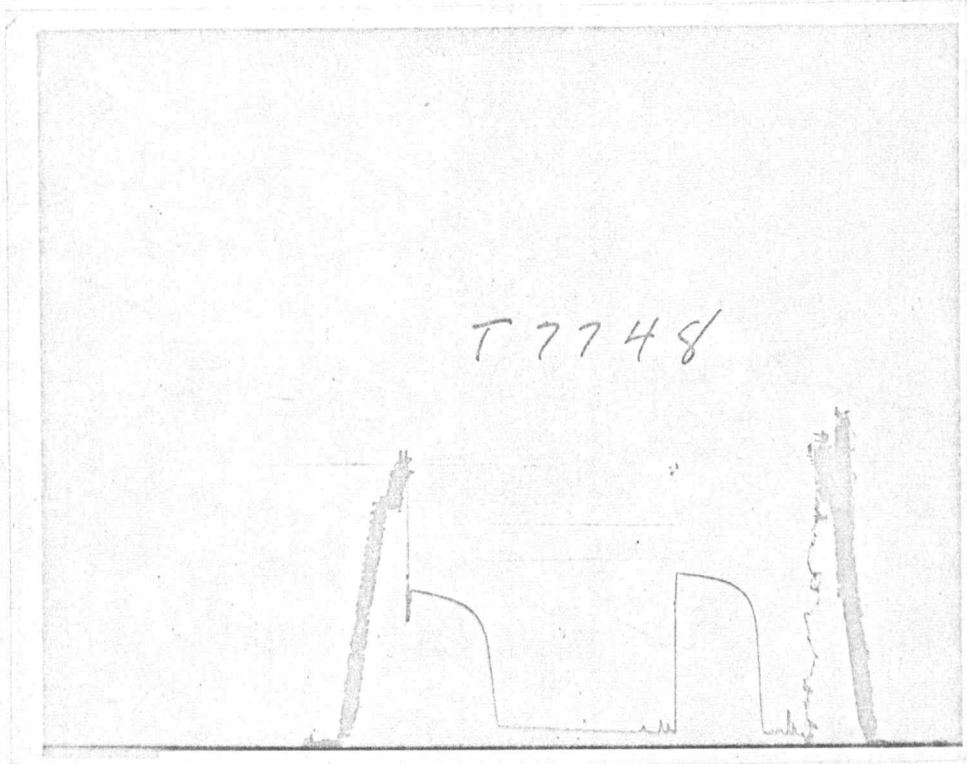
Recovered Feet Of

Remarks

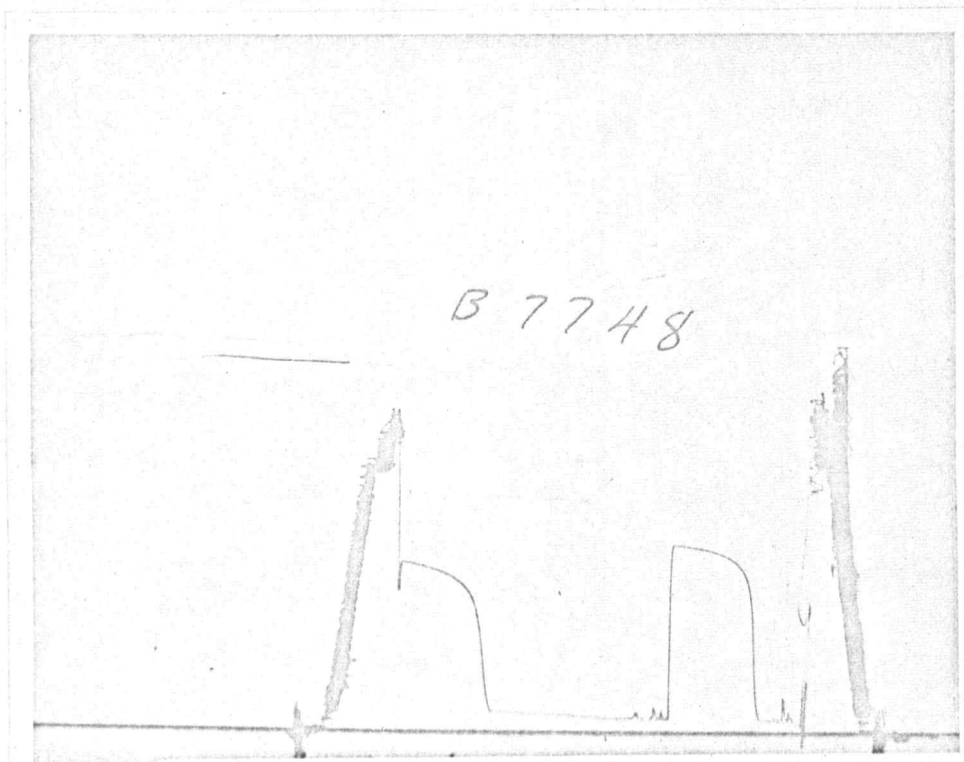
Weak to fair blow thru-out test

TEST NO. 1

TICKET NO. 7748



TOP





POST OFFICE BOX 169

GREAT BEND, KANSAS 67530

DRILL-STEM TEST DATA

Well Name	Kratky	Test No.	2
Well Number	2	Zone Tested	Topeka
Company	Larry Stephenson	Date	4/10/72
Comp. Rep.	Richard M. Foley	Tester	Willie Bowman
Contractor	H-30, Inc.	Ticket No.	7749
Location	Ellsworth 30-14-10	Elevation	

Recorder No.	3600	Clock Range	12 hr	Recorder No.	3400	Clock Range	12 hr
Depth	2478	Depth	2503				
Initial Hydro Mud Press.	1444	Initial Hydro Mud Press.	1421				
Initial Shut-in Press.	899	Initial Shut-in Press.	888				
Initial Flow Press.	18-32	Initial Flow Press.	20-40				
Final Flow Press.	38-88	Final Flow Press.	40-90				
Final Shut-in Press.	847	Final Shut-in Press.	856				
Final Hydro Mud Press.	1436	Final Hydro Mud Press.	1410				
Temperature	94	Tool Open Before I. S. I.	30	Mins.			
Mud Weight	10/5	Viscosity	40	Initial Shut-in	60	Mins.	
Fluid Loss		Flow Period	120	Mins.			
Interval Tested	2483-2505	Final Shut-in	60	Mins.			
Top Packer Depth	2483	Surface Choke Size	5/8				
Bottom Packer Depth		Bottom Choke Size	5/8				
Total Depth	2505	Main Hole Size	7 7/8				
Drill Pipe Size	4 1/2 FH	Wt.		Rubber Size	6 3/4		
Drill Collar I. D.		Ft. Run					
Recovery—Total Feet	185						
Recovered	5	Feet Of Oil specked mud					
Recovered	180	Feet Of Watery mud					
Recovered		Feet Of					
Recovered		Feet Of					

Remarks

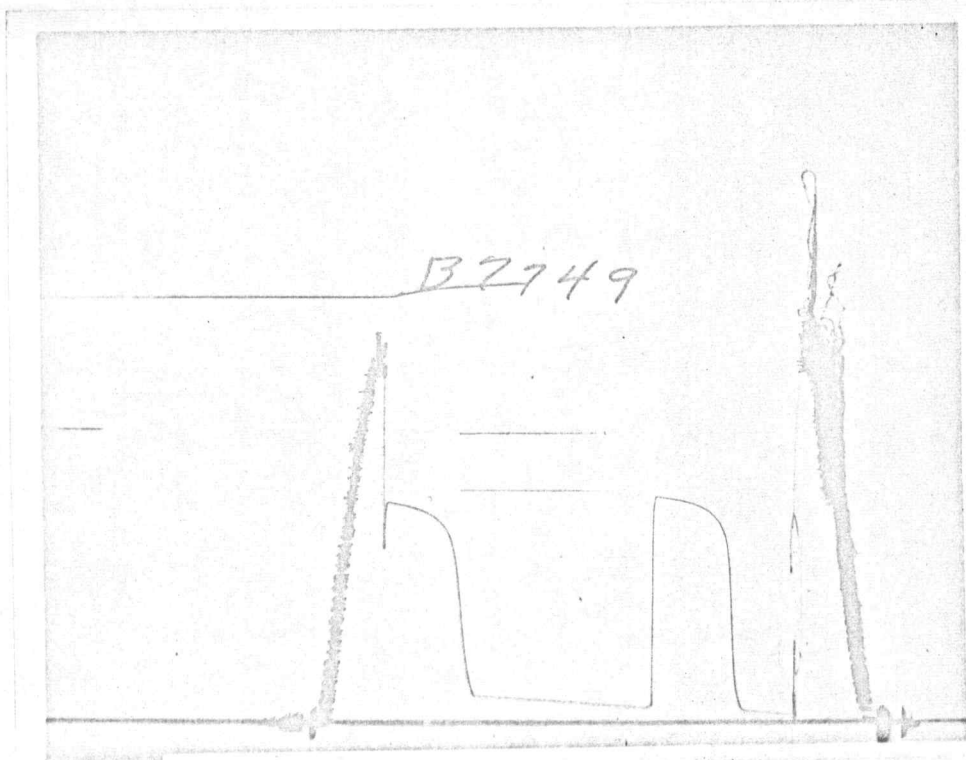
Weak blow throughout test

TEST NO. 2

TICKET NO. 7749



TOP



BOTTOM



POST OFFICE BOX 169
GREAT BEND, KANSAS 67530

DRILL-STEM TEST DATA

Well Name	Kratky	Test No.	3
Well Number	2	Zone Tested	K.C.
Company	Larry Stephenson	Date	4/12/72
Comp. Rep.	Richard M. Foley	Tester	Willie Bowman
Contractor	H-30, Inc.	Ticket No.	7750
Location	Ellsworth 30-14-10	Elevation	

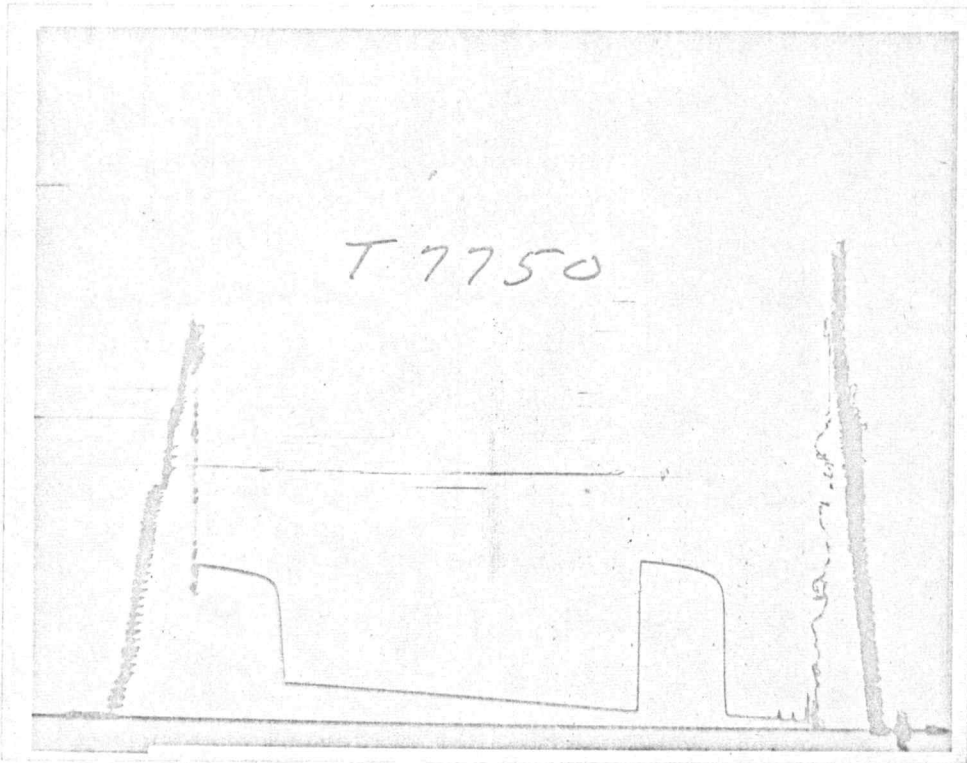
Recorder No.	3600	Clock Range	12 hr	Recorder No.	3400	Clock Range	12 hr
Depth	2816	Depth	2853				
Initial Hydro Mud Press.	1760	Initial Hydro Mud Press.	1729				
Initial Shut-in Press.	720	Initial Shut-in Press.	721				
Initial Flow Press.	38-57	Initial Flow Press.	36-49				
Final Flow Press.	59-147	Final Flow Press.	50-150				
Final Shut-in Press.	689	Final Shut-in Press.	680				
Final Hydro Mud Press.	1751	Final Hydro Mud Press.	1720				
Temperature	101	Tool Open Before I. S. I.	60	Mins.			
Mud Weight	10.8	Viscosity	45	Initial Shut-in	60	Mins.	
Fluid Loss		Flow Period	240	Mins.			
Interval Tested	2821-2855	Final Shut-in	60	Mins.			
Top Packer Depth	2821	Surface Choke Size	5/8				
Bottom Packer Depth		Bottom Choke Size	5/8				
Total Depth	2855	Main Hole Size	7 7/8				
Drill Pipe Size	4 1/2 FH	Wt.		Rubber Size	6 3/4		
Drill Collar I. D.		Ft. Run					
Recovery—Total Feet	260						
Recovered	260	Feet Of Muddy Water (no show)					
Recovered		Feet Of					
Recovered		Feet Of					
Recovered		Feet Of					

Remarks

Fair blow throughout test

TEST NO. 3

TICKET NO. 7750



TOP

