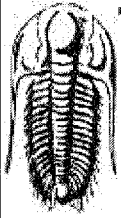


15-063-21718

19-14s-31w

IND



**TRILOBITE TESTING, INC.**

### DRILL STEM TEST REPORT

Lario Oil & Gas Company

**Thies Ranch #1-19**

301 S. Market  
Wichita, KS 67202

**S19-14s-31w Gove,KS**

Job Ticket: 31320      **DST#:1**

ATTN: Steve Davis

Test Start: 2008.06.23 @ 08:23:01

#### GENERAL INFORMATION:

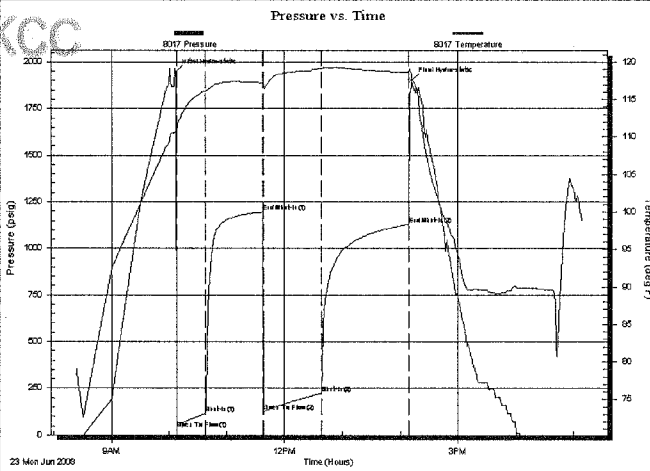
Formation: **Lansing 'D&E'**  
 Deviated: No Whipstock: ft (KB)  
 Time Tool Opened: 10:07:41  
 Time Test Ended: 17:09:41  
 Test Type: Conventional Bottom Hole  
 Tester: Chuck Smith  
 Unit No: 37  
 Interval: **3915.00 ft (KB) To 3932.00 ft (KB) (TVD)**  
 Total Depth: 3932.00 ft (KB) (TVD)  
 Reference Elevations: 2802.00 ft (KB)  
 2797.00 ft (CF)  
 Hole Diameter: 7.88 inches Hole Condition: Good  
 KB to GRCF: 5.00 ft

**Serial #: 8017**      **Inside**  
 Press@RunDepth: 225.35 psig @ 3917.00 ft (KB)      Capacity: 7000.00 psig  
 Start Date: 2008.06.23      End Date: 2008.06.23      Last Calib.: 2008.06.23  
 Start Time: 08:23:02      End Time: 17:09:41      Time On Btm: 2008.06.23 @ 10:07:11  
 Time Off Btm: 2008.06.23 @ 14:11:51

TEST COMMENT: IF: B.O.B. @ 7 min.  
 IS: 4" Return.  
 FF: B.O.B. @ 9 min.  
 FSI: 5" Return.

CONFIDENTIAL  
AUG 26 2008

19-14-31w

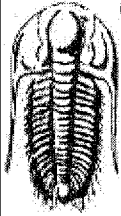


PRESSURE SUMMARY			
Time (Min.)	Pressure (psig)	Temp (deg F)	Annotation
0	1944.78	110.75	Initial Hydro-static
1	35.20	110.10	Open To Flow(1)
31	116.60	116.09	Shut-In(1)
92	1195.00	117.21	End Shut-In(1)
92	127.33	116.66	Open To Flow(2)
152	225.35	119.09	Shut-In(2)
242	1129.06	118.60	End Shut-In(2)
245	1902.32	117.90	Final Hydro-static

Recovery		
Length (ft)	Description	Volume (bbl)
153.00	GWOCM 15%G 15%W 20%M 50%O	1.03
461.00	GO 35%G 65%O	6.47
0.00	425 Feet G.I.P.	0.00

Gas Rates			
	Choke (inches)	Pressure (psig)	Gas Rate (Mcf/d)

RECEIVED  
 KANSAS CORPORATION COMMISSION  
 AUG 27 2008  
 CONSERVATION DIVISION  
 WICHITA, KS



**TRILOBITE  
TESTING, INC.**

# DRILL STEM TEST REPORT

**FLUID SUMMARY**

Lario Oil & Gas Company

**Thies Ranch #1-19**

301 S. Market  
Wichita, KS 67202

**S19-14s-31w Gove,KS**

Job Ticket: 31320

**DST#:1**

ATTN: Steve Davis

Test Start: 2008.06.23 @ 08:23:01

## Mud and Cushion Information

Mud Type: Gel Chem

Cushion Type:

Oil API:

36 deg API

Mud Weight: 9.00 lb/gal

Cushion Length:

ft

Water Salinity:

8100 ppm

Viscosity: 42.00 sec/qt

Cushion Volume:

bbbl

Water Loss: 7.80 in<sup>3</sup>

Gas Cushion Type:

Resistivity: 0.00 ohm.m

Gas Cushion Pressure:

psig

Salinity: 2300.00 ppm

Filter Cake: 1.00 inches

## Recovery Information

Recovery Table

Length ft	Description	Volume bbl
153.00	GWOCM 15%G 15%W 20%M 50%O	1.026
461.00	GO 35%G 65%O	6.467
0.00	425 Feet G.I.P.	0.000

Total Length: 614.00ft Total Volume: 7.493 bbl

Num Fluid Samples: 0

Num Gas Bombs: 0

Serial #:

Laboratory Name:

Laboratory Location:

Recovery Comments: API: 40 @ 100 Degrees F = 36

RW: .470 @ 99 Degrees F = 8100 chlorides.

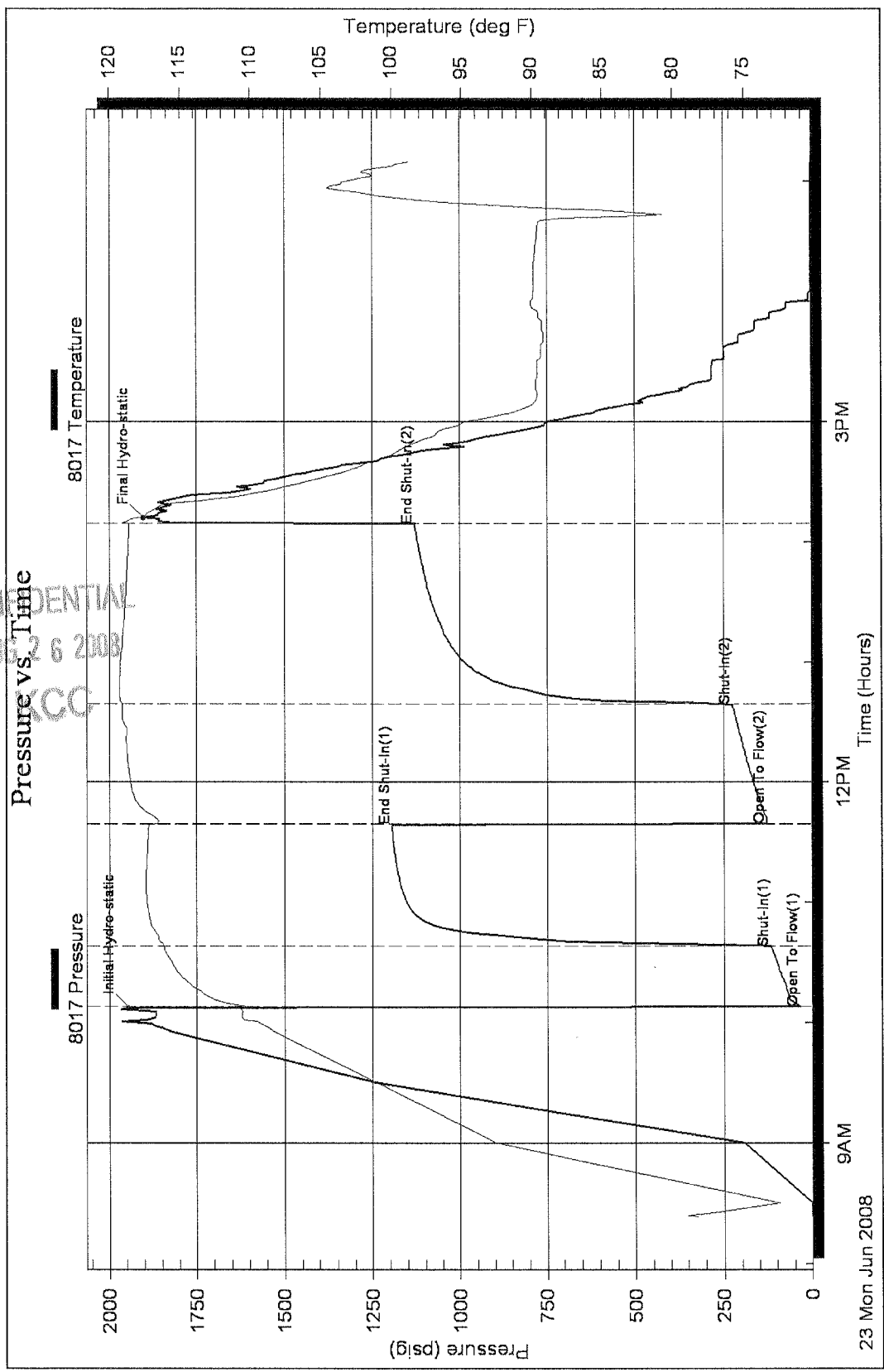
DST Test Number: 1

S19-14e-31w Cove, KS

Lario Oil & Gas Company

Inside

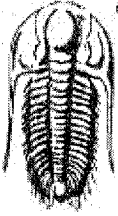
Serial #: 8017



Trilobite Testing, Inc

Ref. No: 31320

Printed: 2008.06.24 @ 08:28:01 Page 3



**TRILOBITE TESTING, INC.**

**DRILL STEM TEST REPORT**

Lario Oil & Gas Company

301 S. Market  
Wichita, KS 67202

ATTN: Steve Davis

**Thies Ranch #1-19**

**S19-14s-31w Gove,KS**

Job Ticket: 31321

DST#:2

Test Start: 2008.06.24 @ 05:39:00

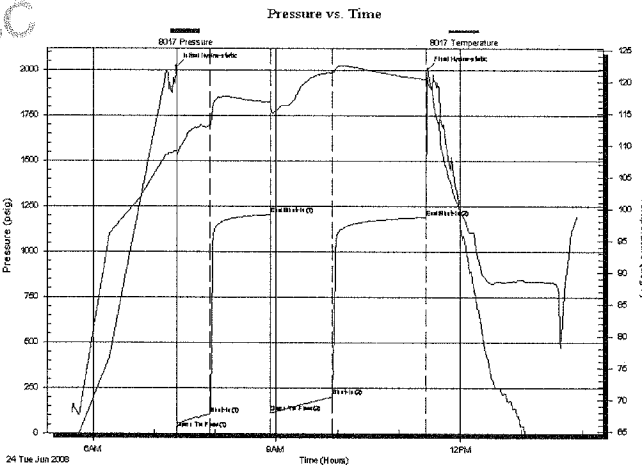
**GENERAL INFORMATION:**

Formation: 'H'  
 Deviated: No Whipstock: ft (KB)  
 Time Tool Opened: 07:22:20  
 Time Test Ended: 13:56:00  
 Interval: 3997.00 ft (KB) To 4025.00 ft (KB) (TVD)  
 Total Depth: 4025.00 ft (KB) (TVD)  
 Hole Diameter: 7.88 inches Hole Condition: Good  
 Test Type: Conventional Bottom Hole  
 Tester: Chuck Smith  
 Unit No: 37  
 Reference Elevations: 2802.00 ft (KB)  
 2797.00 ft (CF)  
 KB to GR/CF: 5.00 ft

**Serial #: 8017 Inside**  
 Press@RunDepth: 201.96 psig @ 4000.00 ft (KB)  
 Start Date: 2008.06.24 End Date: 2008.06.24  
 Start Time: 05:39:01 End Time: 13:56:00  
 Capacity: 7000.00 psig  
 Last Calib.: 2008.06.24  
 Time On Btm: 2008.06.24 @ 07:22:10  
 Time Off Btm: 2008.06.24 @ 11:27:50

TEST COMMENT: IF: B.O.B. @ 9 min.  
 ISI: 2 1/2" Return.  
 FF: B.O.B. @ 8 min.  
 FSI: 8" Return.

CONFIDENTIAL  
 AUG 26 2008  
 KOC

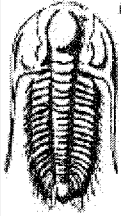


PRESSURE SUMMARY			
Time (Min.)	Pressure (psig)	Temp (deg F)	Annotation
0	2019.05	109.14	Initial Hydro-static
1	23.08	108.28	Open To Flow(1)
33	105.73	113.15	Shut-In(1)
92	1202.42	116.83	End Shut-In(1)
93	115.81	116.15	Open To Flow(2)
153	201.96	121.45	Shut-In(2)
244	1188.09	120.42	End Shut-In(2)
246	2004.49	120.08	Final Hydro-static

Recovery		
Length (ft)	Description	Volume (bbl)
185.00	GMCO 15%G 30%M 55%O	1.47
124.00	GMCO 15%G 35%M 50%O	1.74
216.00	GO 30%G 70%O	3.03
0.00	1520 Feet G.I.P.	0.00

Gas Rates			
	Choke (inches)	Pressure (psig)	Gas Rate (Mcf/d)

RECEIVED  
 KANSAS CORPORATION COMMISSION  
 AUG 27 2008  
 CONSERVATION DIVISION  
 WICHITA, KS



**TRILOBITE  
TESTING, INC.**

## DRILL STEM TEST REPORT

**FLUID SUMMARY**

Lario Oil & Gas Company

**Thies Ranch #1-19**

301 S. Market  
Wichita, KS 67202

**S19-14s-31w Gove,KS**

Job Ticket: 31321

**DST#:2**

ATTN: Steve Davis

Test Start: 2008.06.24 @ 05:39:00

### Mud and Cushion Information

Mud Type: Gel Chem	Cushion Type:	Oil API:	37 deg API
Mud Weight: 9.00 lb/gal	Cushion Length: ft	Water Salinity:	0 ppm
Viscosity: 50.00 sec/qt	Cushion Volume: bbl		
Water Loss: 7.80 in <sup>3</sup>	Gas Cushion Type:		
Resistivity: 0.00 ohm.m	Gas Cushion Pressure: psig		
Salinity: 2800.00 ppm			
Filter Cake: 2.00 inches			

### Recovery Information

Recovery Table

Length ft	Description	Volume bbl
185.00	GMCO 15%G 30%M 55%O	1.475
124.00	GMCO 15%G 35%M 50%O	1.739
216.00	GO 30%G 70%O	3.030
0.00	1520 Feet G.I.P.	0.000

Total Length: 525.00ft Total Volume: 6.244 bbl

Num Fluid Samples: 0

Num Gas Bombs: 0

Serial #:

Laboratory Name:

Laboratory Location:

Recovery Comments: API: 40 @ 90 Degrees F = 37

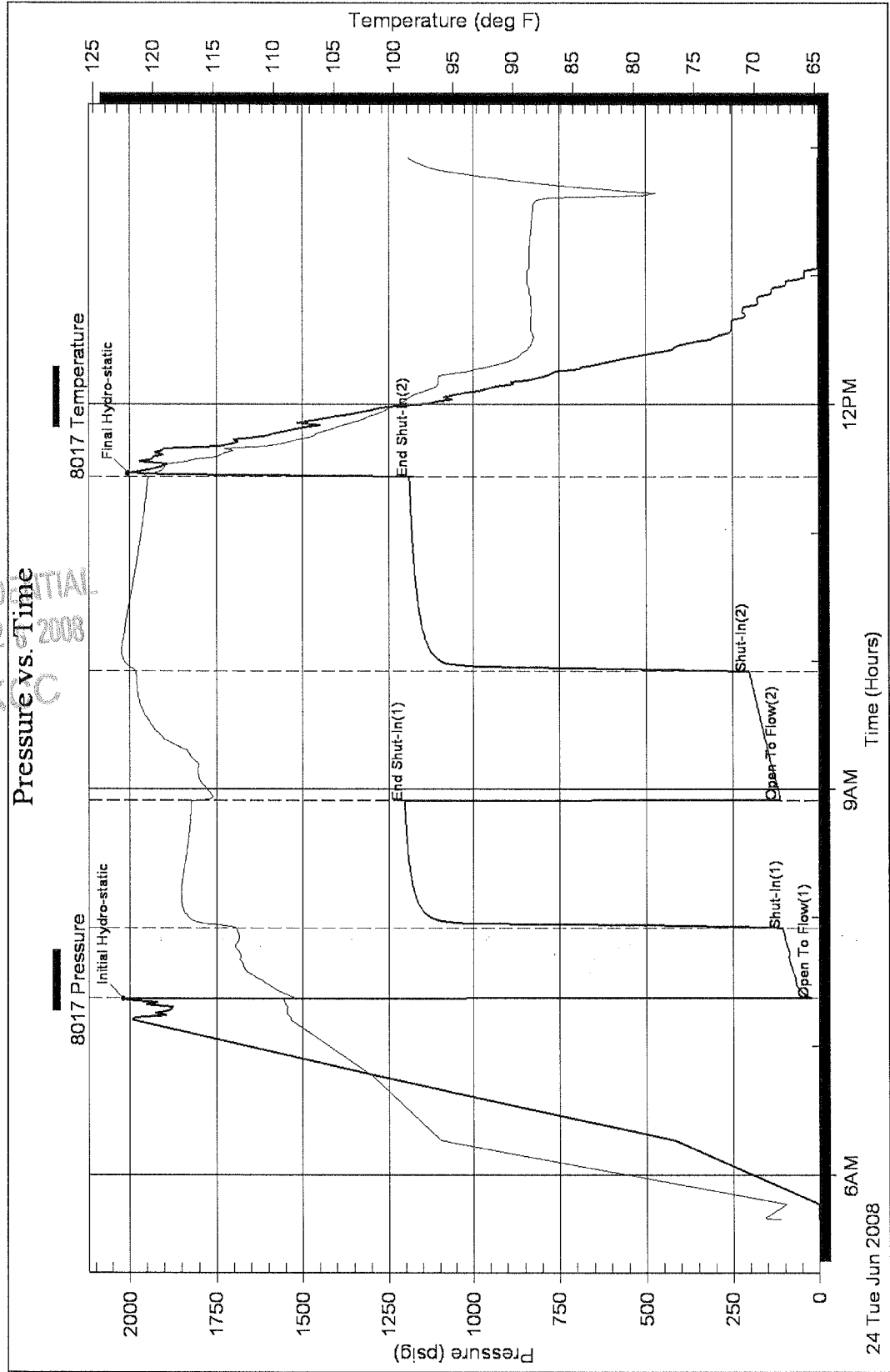
DST Test Number: 2

S19-14S-31W Gove, KS

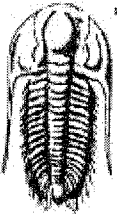
Lario Oil & Gas Company

Inside

Serial #: 8017



CONFIDENTIAL  
AUG 2 2008  
KCC



**TRILOBITE TESTING, INC.**

**DRILL STEM TEST REPORT**

Lario Oil & Gas Company

301 S. Market  
Wichita, KS 67202

ATTN: Steve Davis

**Thies Ranch #1-19**

**S19-14s-31w Gove,KS**

Job Ticket: 31322

**DST#:3**

Test Start: 2008.06.24 @ 23:34:00

**GENERAL INFORMATION:**

Formation: **'I&J'**

Deviated: No Whipstock: ft (KB)

Time Tool Opened: 00:51:00

Time Test Ended: 07:29:15

Interval: **4030.00 ft (KB) To 4077.00 ft (KB) (TVD)**

Total Depth: 4077.00 ft (KB) (TVD)

Hole Diameter: 7.88 inches Hole Condition: Good

Test Type: Conventional Bottom Hole

Tester: Chuck Smith

Unit No: 37

Reference Elevations: 2802.00 ft (KB)

2797.00 ft (CF)

KB to GR/CF: 5.00 ft

**Serial #: 8351**

**Inside**

Press@RunDepth: 308.00 psig @ 4032.00 ft (KB)

Start Date: 2008.06.24

End Date:

2008.06.25

Capacity: 7000.00 psig

Last Calib.: 2008.06.25

Start Time: 23:34:01

End Time:

07:29:15

Time On Btm: 2008.06.25 @ 00:41:00

Time Off Btm: 2008.06.25 @ 05:00:00

TEST COMMENT: IF: B.O.B. @ 11 min.

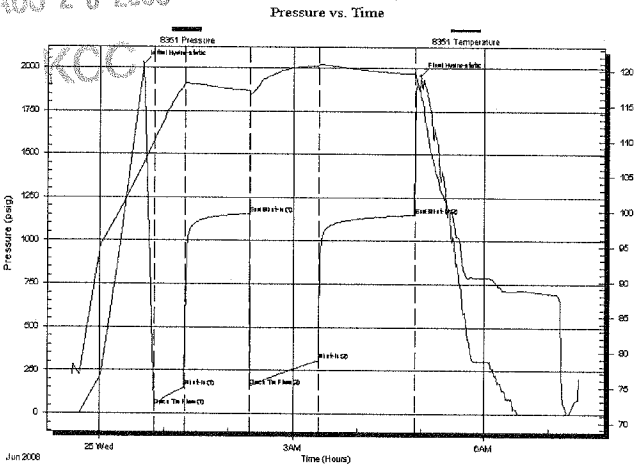
ISI: 2 1/2" Return.

FF: B.O.B. @ 14 1/2 min.

FSI: 5 1/2" Return.

CONFIDENTIAL

AUG 26 2008



**PRESSURE SUMMARY**

Time (Min.)	Pressure (psig)	Temp (deg F)	Annotation
0	2021.51	106.67	Initial Hydro-static
10	45.56	110.03	Open To Flow(1)
39	152.48	117.78	Shut-In(1)
99	1156.12	117.19	End Shut-In(1)
99	158.80	116.78	Open To Flow(2)
163	308.00	120.72	Shut-In(2)
253	1149.70	119.58	End Shut-In(2)
259	1957.44	115.93	Final Hydro-static

**Recovery**

Length (ft)	Description	Volume (bbl)
30.00	M 100%M	0.15
338.00	GOMCW 40%G 1%O 9%M 50%W	3.89
62.00	GOMCW 15%G 5%O 25%M 55%W	0.87
124.00	GOWCM 20%G 5%O 35%W 40%M	1.74
124.00	GO 35%G 65%O	1.74
0.00	375 Feet G.I.P.	0.00

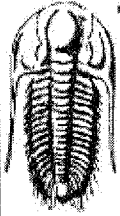
**Gas Rates**

Choke (inches)	Pressure (psig)	Gas Rate (Mcf/d)

RECEIVED  
KANSAS CORPORATION COMMISSION

AUG 27 2008

CONSERVATION DIVISION  
WICHITA, KS



**TRILOBITE  
TESTING, INC.**

# DRILL STEM TEST REPORT

**FLUID SUMMARY**

Lario Oil & Gas Company

**Thies Ranch #1-19**

301 S. Market  
Wichita, KS 67202

**S19-14s-31w Gove,KS**

Job Ticket: 31322

**DST#:3**

ATTN: Steve Davis

Test Start: 2008.06.24 @ 23:34:00

## Mud and Cushion Information

Mud Type:	Gel Chem	Cushion Type:		Oil API:	36 deg API
Mud Weight:	9.00 lb/gal	Cushion Length:	ft	Water Salinity:	30000 ppm
Viscosity:	54.00 sec/qt	Cushion Volume:	bbbl		
Water Loss:	7.80 in <sup>3</sup>	Gas Cushion Type:			
Resistivity:	0.00 ohm.m	Gas Cushion Pressure:	psig		
Salinity:	2800.00 ppm				
Filter Cake:	2.00 inches				

## Recovery Information

Recovery Table

Length ft	Description	Volume bbbl
30.00	M 100%M	0.148
338.00	GOMCW 40%G 1%O 9%M 50%W	3.894
62.00	GOMCW 15%G 5%O 25%M 55%W	0.870
124.00	GOWCM 20%G 5%O 35%W 40%M	1.739
124.00	GO 35%G 65%O	1.739
0.00	375 Feet G.I.P.	0.000

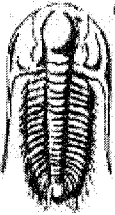
Total Length: 678.00ft      Total Volume: 8.390 bbl

Num Fluid Samples: 0      Num Gas Bombs: 0      Serial #:

Laboratory Name:      Laboratory Location:

Recovery Comments: API: 36 @ 60 Degrees F = 36  
RW: .270 @ 62 Degrees F = 30000 chlorides.





**TRILOBITE TESTING, INC.**

**DRILL STEM TEST REPORT**

Lario Oil & Gas Company

301 S. Market  
Wichita, KS 67202

ATTN: Steve Davis

**Thies Ranch #1-19**

**S19-14s-31w Gove,KS**

Job Ticket: 31323

**DST#:4**

Test Start: 2008.06.25 @ 15:22:15

**GENERAL INFORMATION:**

Formation: **'K'**  
 Deviated: No Whipstock: ft (KB)  
 Time Tool Opened: 17:12:45  
 Time Test Ended: 22:14:45  
 Interval: **4086.00 ft (KB) To 4108.00 ft (KB) (TVD)**  
 Total Depth: 4108.00 ft (KB) (TVD)  
 Hole Diameter: 7.88 inches Hole Condition: Good  
 Test Type: Conventional Bottom Hole  
 Tester: Chuck Smith  
 Unit No: 37  
 Reference Elevations: 2802.00 ft (KB)  
 2797.00 ft (CF)  
 KB to GR/CF: 5.00 ft

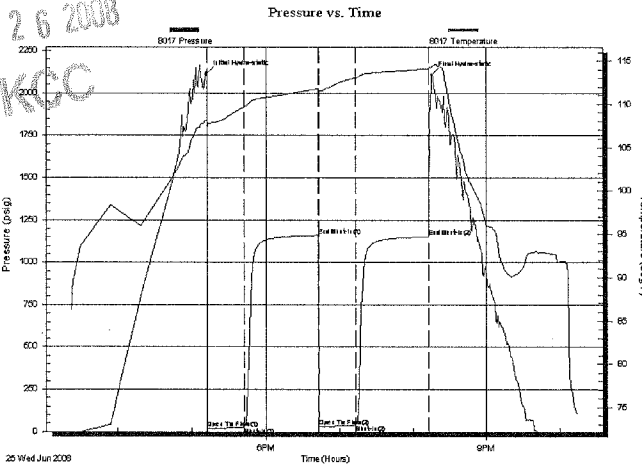
**Serial #: 8017**

**Inside**

Press@RunDepth: 38.93 psig @ 4088.00 ft (KB)  
 Start Date: 2008.06.25 End Date: 2008.06.25  
 Start Time: 15:22:16 End Time: 22:14:45  
 Capacity: 7000.00 psig  
 Last Calib.: 2008.06.25  
 Time On Btm: 2008.06.25 @ 17:12:35  
 Time Off Btm: 2008.06.25 @ 20:15:15

TEST COMMENT: IF: Weak surface blow thru-out.  
 ISI: No return.  
 FF: No blow.  
 FSI: No return.

CONFIDENTIAL  
 AUG 26 2008  
 KCC



**PRESSURE SUMMARY**

Time (Min.)	Pressure (psig)	Temp (deg F)	Annotation
0	2116.15	108.14	Initial Hydro-static
1	18.63	107.24	Open To Flow(1)
30	27.22	109.69	Shut-In(1)
90	1159.52	111.79	End Shut-In(1)
91	30.36	111.40	Open To Flow(2)
121	38.93	113.05	Shut-In(2)
181	1152.40	114.13	End Shut-In(2)
183	2108.58	114.40	Final Hydro-static

**Recovery**

Length (ft)	Description	Volume (bbl)
20.00	OSM 100%Oil scum mud	0.10

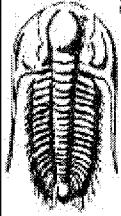
**Gas Rates**

	Choke (inches)	Pressure (psig)	Gas Rate (Mcf/d)

RECEIVED  
 KANSAS CORPORATION COMMISSION

AUG 27 2008

CONSERVATION DIVISION  
 WICHITA, KS



**TRILOBITE  
TESTING, INC.**

**DRILL STEM TEST REPORT**

**FLUID SUMMARY**

Lario Oil & Gas Company

**Thies Ranch #1-19**

301 S. Market  
Wichita, KS 67202

**S19-14s-31w Gove,KS**

Job Ticket: 31323

**DST#:4**

ATTN: Steve Davis

Test Start: 2008.06.25 @ 15:22:15

**Mud and Cushion Information**

Mud Type: Gel Chem

Cushion Type:

Oil API:

0 deg API

Mud Weight: 9.00 lb/gal

Cushion Length:

ft

Water Salinity:

0 ppm

Viscosity: 50.00 sec/qt

Cushion Volume:

bbbl

Water Loss: 7.99 in<sup>3</sup>

Gas Cushion Type:

Resistivity: 0.00 ohm.m

Gas Cushion Pressure:

psig

Salinity: 3000.00 ppm

Filter Cake: 2.00 inches

**Recovery Information**

Recovery Table

Length ft	Description	Volume bbbl
20.00	OSM 100%Oil scum mud	0.098

Total Length: 20.00 ft

Total Volume: 0.098 bbl

Num Fluid Samples: 0

Num Gas Bombs: 0

Serial #:

Laboratory Name:

Laboratory Location:

Recovery Comments:

DST Test Number: 4

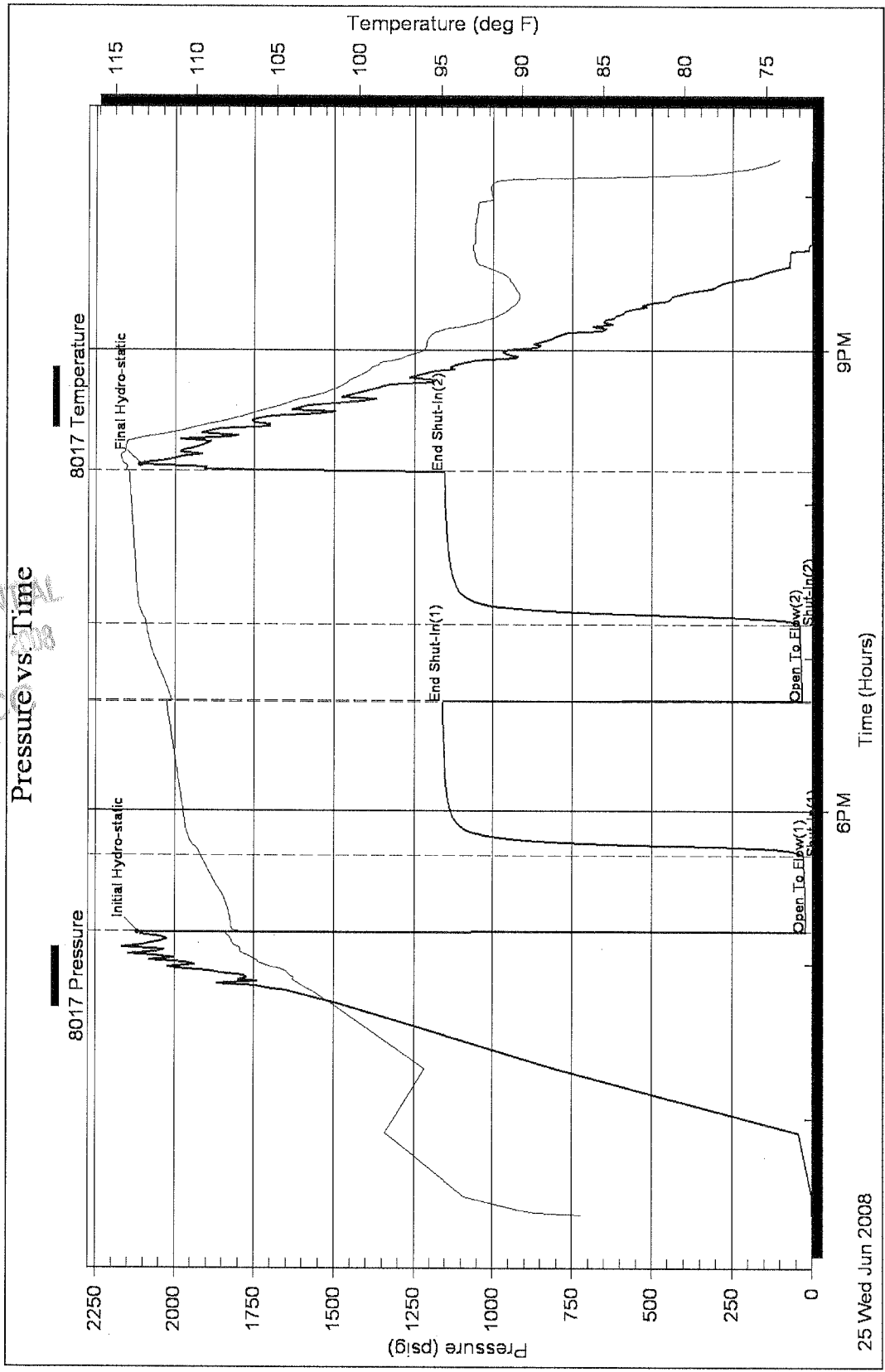
S19-14s-31W Gove, KS

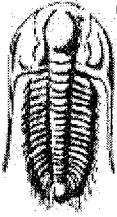
Lario Oil & Gas Company

Inside

Serial #: 8017

CONFIDENTIAL  
AUG 6 2008  
KC





**TRILOBITE TESTING, INC.**

**DRILL STEM TEST REPORT**

Lario Oil & Gas Company

**Thies Ranch #1-19**

301 S. Market  
Wichita, KS 67202

**S19-14s-31w Gove,KS**

Job Ticket: 31324

**DST#:5**

ATTN: Steve Davis

Test Start: 2008.06.26 @ 09:43:44

**GENERAL INFORMATION:**

Formation: 'L'  
Deviated: No Whipstock: ft (KB)  
Time Tool Opened: 11:14:44  
Time Test Ended: 22:04:54

Test Type: Conventional Bottom Hole  
Tester: Chuck Smith  
Unit No: 37

Interval: **4117.00 ft (KB) To 4184.00 ft (KB) (TVD)**  
Total Depth: 4184.00 ft (KB) (TVD)  
Hole Diameter: 7.88 inches Hole Condition: Good

Reference Elevations: 2802.00 ft (KB)  
2797.00 ft (CF)  
KB to GR/CF: 5.00 ft

**Serial #: 8017**

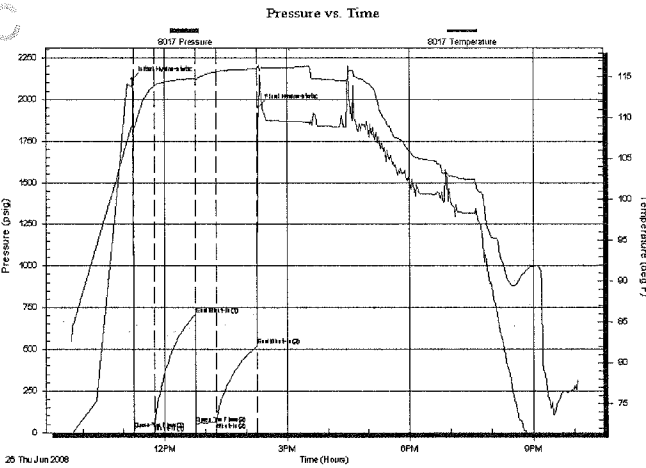
**Inside**

Press@RunDepth: 64.53 psig @ 4119.00 ft (KB)  
Start Date: 2008.06.26 End Date: 2008.06.26  
Start Time: 09:43:45 End Time: 22:04:54

Capacity: 7000.00 psig  
Last Calib.: 2008.06.26  
Time On Btm: 2008.06.26 @ 11:12:44  
Time Off Btm: 2008.06.26 @ 14:17:44

TEST COMMENT: IF: 1 1/4" blow.  
ISI: No return.  
FF: No blow.  
FSI: No return.

CONFIDENTIAL  
AUG 26 2008  
KCC



**PRESSURE SUMMARY**

Time (Min.)	Pressure (psig)	Temp (deg F)	Annotation
0	2219.36	109.02	Initial Hydro-static
2	22.12	108.23	Open To Flow(1)
33	47.58	113.91	Shut-In(1)
93	708.26	114.86	End Shut-In(1)
93	53.24	114.72	Open To Flow(2)
123	64.53	115.65	Shut-In(2)
183	519.61	116.04	End Shut-In(2)
185	1953.84	116.51	Final Hydro-static

**Recovery**

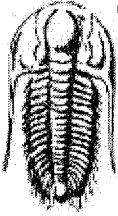
Length (ft)	Description	Volume (bbl)
60.00	WCM 10%W 90% M with spots of oil in	tc0.30
20.00	MCW 15%M 85%W	0.10

**Gas Rates**

Choke (inches)	Pressure (psig)	Gas Rate (Mcf/d)

RECEIVED  
KANSAS CORPORATION COMMISSION

AUG 27 2008



**TRILOBITE  
TESTING, INC.**

## DRILL STEM TEST REPORT

**FLUID SUMMARY**

Lario Oil & Gas Company

**Thies Ranch #1-19**

301 S. Market  
Wichita, KS 67202

**S19-14s-31w Gove,KS**

Job Ticket: 31324

**DST#:5**

ATTN: Steve Davis

Test Start: 2008.06.26 @ 09:43:44

### Mud and Cushion Information

Mud Type: Gel Chem	Cushion Type:	Oil API: 0 deg API
Mud Weight: 9.00 lb/gal	Cushion Length: ft	Water Salinity: 28000ppm
Viscosity: 55.00 sec/qt	Cushion Volume: bbl	
Water Loss: 7.98 in <sup>3</sup>	Gas Cushion Type:	
Resistivity: 0.00 ohm.m	Gas Cushion Pressure: psig	
Salinity: 3000.00 ppm		
Filter Cake: 2.00 inches		

### Recovery Information

Recovery Table

Length ft	Description	Volume bbl
60.00	WCM 10%W 90% M with spots of oil in tool	0.295
20.00	MCW 15%M 85%W	0.098

Total Length: 80.00 ft      Total Volume: 0.393 bbl

Num Fluid Samples: 0      Num Gas Bombs: 0      Serial #:

Laboratory Name:      Laboratory Location:

Recovery Comments: RW: .227 @ 85 Degrees F = 28000

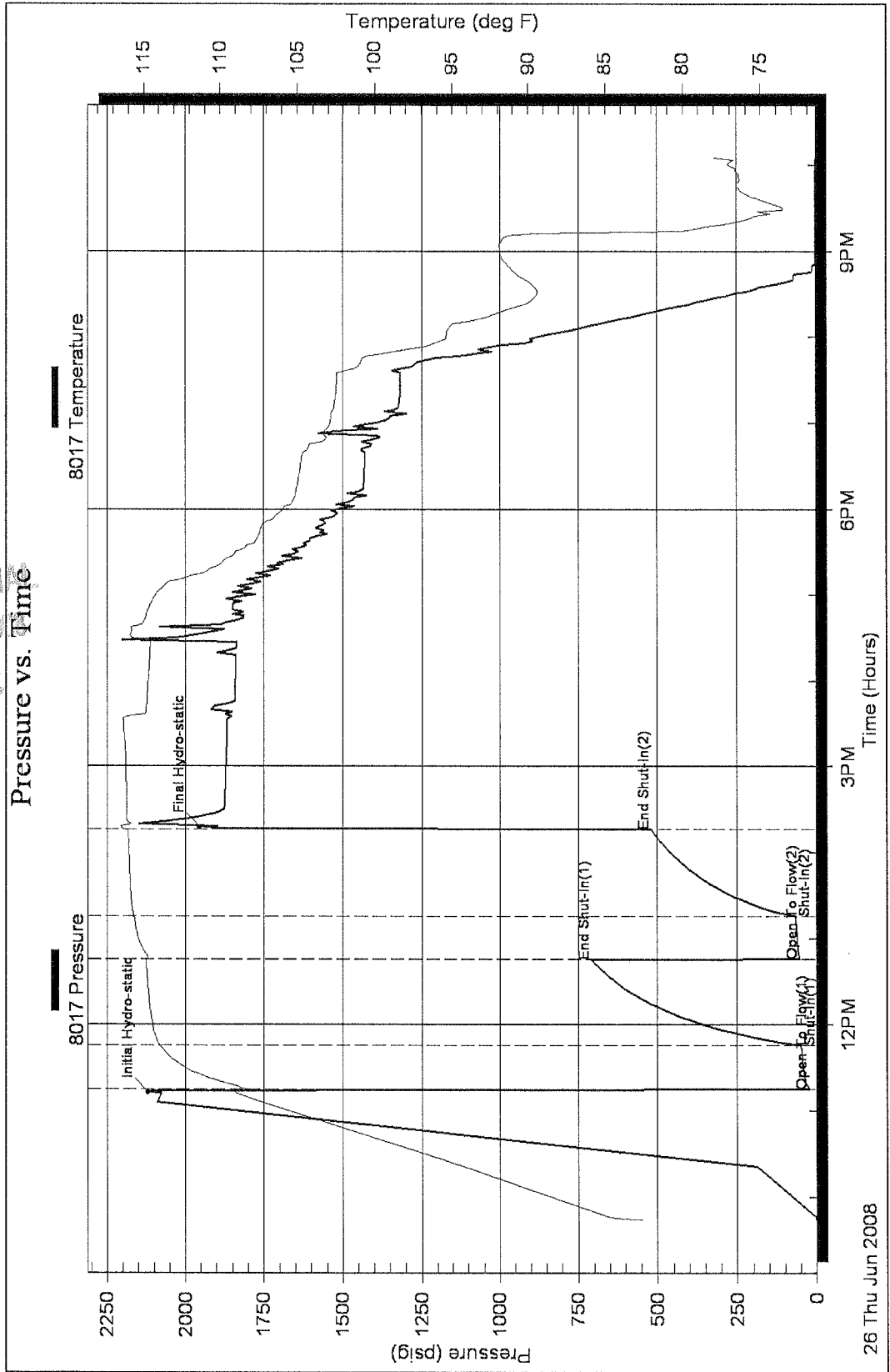
DST Test Number: 5

Sr19-145-31w Cove, KS

Lario Oil & Gas Company

Inside

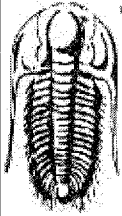
Serial #: 8017



CONFIDENTIAL  
AUG 2 2008  
KOC

26 Thu Jun 2008





**TRILOBITE  
TESTING, INC.**

## DRILL STEM TEST REPORT

**FLUID SUMMARY**

Lario Oil & Gas Company

**Thies Ranch #1-19**

301 S. Market  
Wichita, KS 67202

**S19-14s-31w Gove,KS**

Job Ticket: 30023

**DST#: 6**

ATTN: Steve Davis

Test Start: 2008.06.29 @ 22:10:05

### Mud and Cushion Information

Mud Type: Gel Chem

Cushion Type:

Oil API:

29 deg API

Mud Weight: 9.00 lb/gal

Cushion Length:

ft

Water Salinity:

ppm

Viscosity: 51.00 sec/qt

Cushion Volume:

bbbl

Water Loss: 15.96 in<sup>3</sup>

Gas Cushion Type:

Resistivity: 0.00 ohm.m

Gas Cushion Pressure:

psig

Salinity: 8300.00 ppm

Filter Cake: 2.00 inches

### Recovery Information

Recovery Table

Length ft	Description	Volume bbbl
128.00	O&GCM 30%g 30%o 40%m	0.675
128.00	SM&GCO 30%g 45%o 25%m	1.796
192.00	G&MCO 30%g 60%o 10%m	2.693
826.00	CGO 30%g 70%o	11.587
0.00	GIP 1550 ft	0.000
0.00	API 29@60F = 29	0.000

Total Length: 1274.00 ft

Total Volume: 16.751 bbl

Num Fluid Samples: 0

Num Gas Bombs: 0

Serial #:

Laboratory Name:

Laboratory Location:

Recovery Comments:

