

30-15-11W

LEE H. CORNELL
Petroleum Geologist
PHONE AMHERST 2-3921
706 ORPHEUM BUILDING
WICHITA 2, KANSAS

July 28, 1964

S. and C. Drilling, Inc.
Box 271
Hays, Kansas

Re: No. 1 Grace Driscoll
NE SE NE Sec. 30-15S-11W
Russell County, Kansas

Gentlemen:

Drilling progress at the above captioned well was observed from 2682' to 3315', total depth. Samples were saved and one foot drilling time kept from 2500' to total depth. All samples were examined at the rig and the bags were delivered to the Kansas Well Sample Bureau.

MISCELLANEOUS DATA

Contractor: S. & C. Drilling, Inc.
Surface Hole: July 14, 1964
Surface Casing: 8 5/8" set at 249', cemented with 165 sacks.
Drilling Completed (and well abandoned) July 23, 1964.

FORMATION TOPS (by samples & drilling time)
Elevation 1817 K. B.

Anhydrite (driller)	690	(+1127)
Heebner	2861	(-1044)
Toronto	2879	(-1062)
Tarkio	2951	(-1134)
Lansing	2965	(-1148)
Shaly Conglomerate	3263	(-1446)
Cherty Conglomerate	3274	(-1457)
Arbuckle	3305	(-1488)
Total Depth	3315	(-1498)

STRUCTURAL POSITION

No. 1 Driscoll is structurally low on the Pennsylvanian beds and on the Arbuckle as compared to the nearest dry hole and to the nearest production. As compared to Nixon, et al No. 1 Driscoll in the NE SW NE

S. and C. Drilling, Inc., No. 1 Grace Driscoll

-2-

of 30, it is 5 feet high on the Anhydrite; 3 feet low on the Heebner and Lansing, and 26 feet low on the Arbuckle.

TOPEKA SECTION

2798-2807 Limestone, oolitic, good odor, good show of free oil, fair to good staining, Halliburton DST No. 1, 2795-2810, open 75 minutes, weak steady blow. Recovered 45 feet of thin mud with a few specks of oil. ICIP 887#/30 min.; FCIP 772#/30 min. IFP 18#, FFP 36#.

LANSING-KANSAS CITY SECTION

2995-3004 (30 ft. zone) Limestone, oolitic, no odor, no free oil, scattered stains.

3047-3086 (90 ft. zone) Limestone, coarsely oolitic, very faint odor, scattered shows of free oil, scattered staining, mud barren oolitic porosity. (This zone tested water in the Nixon No. 1 Driscoll)

3151-3155 (180 ft. zone) Limestone, finely oolitic to pinhole porosity, good odor, fair show of free oil, good staining. Halliburton DST #2, 3136-56, open 35 minutes, weak blow for 5 minutes. Recovered 15 feet of mud, no oil. ICIP 846#/30 min., FCIP 786#/30 min. IFP 13#, FFP 17#.

3156-3162 (180 ft. zone) Limestone, coarsely oolitic, good odor, good show of free oil, good staining. Halliburton DST #3, 3146-3170, open 30 minutes, no blow. Recovered 10 feet of mud, no oil. ICIP 1000#/30 min., FCIP 784#/30 mins. IFP 13#, FFP 17#.

The charts of the two DST's in the 180 foot zone were examined by Verl Lancaster, Halliburton Division Testing Superintendent, who reported that the charts of the two tests indicated a lack of permeability in the 180 foot zone.

CONGLOMERATE SECTION

3263-3274 Various colored shales.

3274-3305 Various colored cherts, and shales, pale green shale with medium to large round to sub-round imbedded sandstone grains, no sandstone clusters, no shows of oil.

S. and C. Drilling, Inc., No. 1 Grace Driscoll

-3-

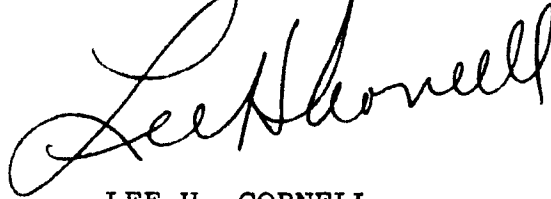
ARBUCKLE SECTION

3305-15 Dolomite, white to gray, medium crystalline, fair to good intercrystalline porosity, very faint odor and very slight show of oil in circulating sample at 3310; fair odor and small show of free oil in circulating sample at 3315.

Halliburton DST #4, 3300-3315, open 30 minutes, strong blow. Recovered 1950 feet of water, no oil.
ICIP 1018#/20 min.; FCIP 984#/20 min. IFP 87#, FFP 820#.

Because of its low structural position and the negative DST's, No. 1 Driscoll was abandoned at 3315', a penetration of 10 feet in the Arbuckle.

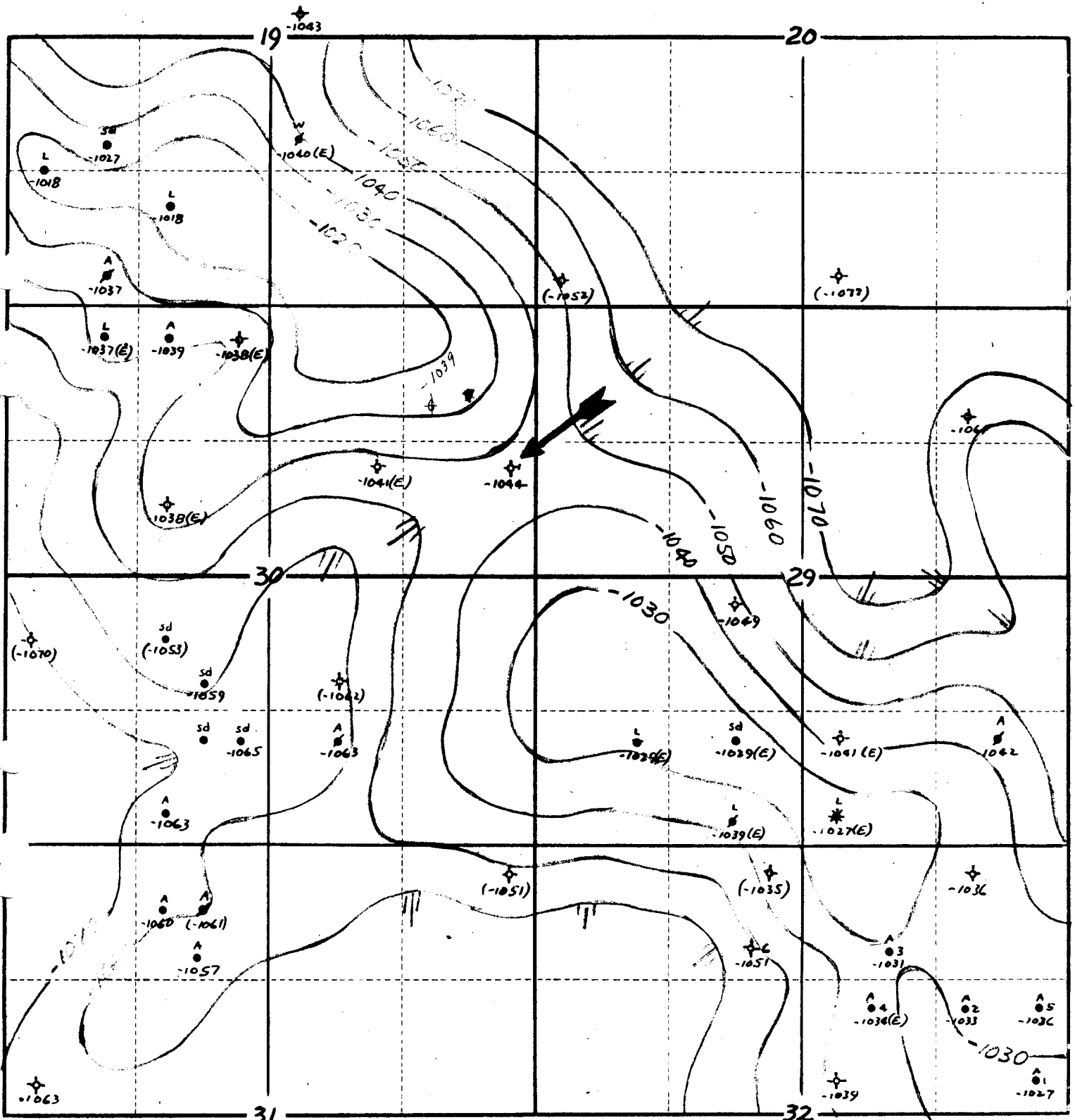
Yours very truly,



LEE H. CORNELL,
Petroleum Geologist.

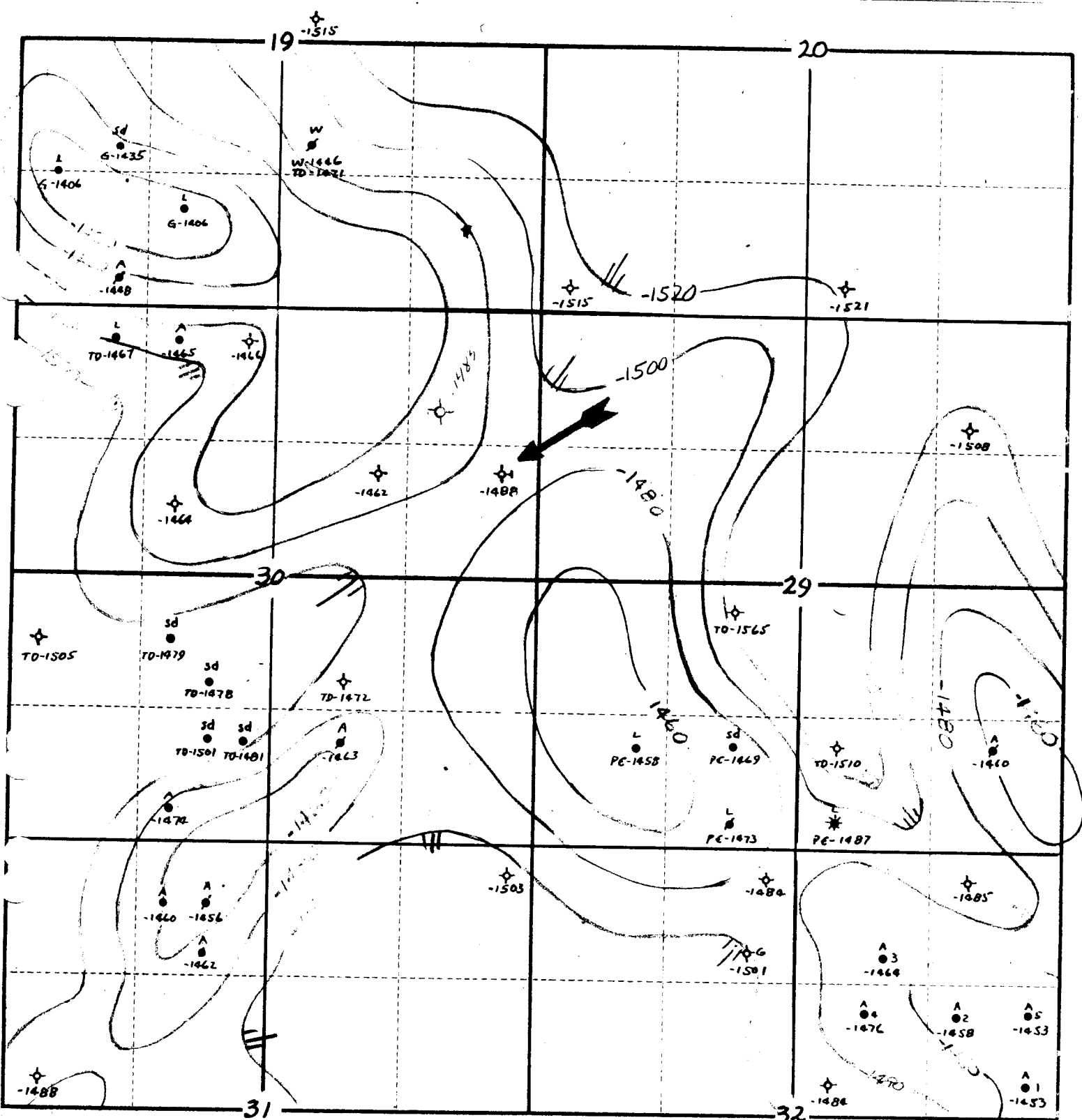
LHC/mlb
encl.

Township 15S Range 11W County Russell State Kansas



Top of the Heebner shale
Contour Interval - 10 ft.
By Lee H. Cornell

Township 15s Range 11W County Russell State Kansas



Base of the Pennsylvanian (Arb-Pre-Camb).
 Contour Interval - 20 ft
 By Lee H. Cornell

A ● 3 -1464
 A ● 2 -1458
 A ● 5 -1453
 A ● 1 -1453
 A ● 4 -1476
 A ● 1983
 A ● 1440