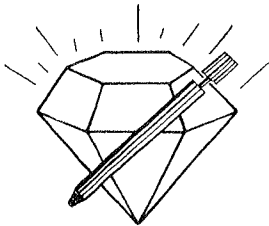


15-167-23510

7-15s-13w



DIAMOND TESTING

P.O. Box 157

HOISINGTON, KANSAS 67544

(620) 653-7550 • (800) 542-7313

STC 21083.D438

Page 1 of 2 Pages

Company Ritchie Exploration, Inc. Lease & Well No. Maag P Twin No. 2

Elevation 1879 KB Formation Upper Topeka Effective Pay Ft. Ticket No. J2241

Date 5-19-08 Sec. 7 Twp. 15S Range 13W County Russell State Kansas

Test Approved By Peter Fiorini Diamond Representative John C. Riedl

Formation Test No. 1 Interval Tested from 2,731 ft. to 2,770 ft. Total Depth 2,770 ft.

Packer Depth 2,726 ft. Size 6 3/4 in. Packer Depth ft. Size in.

Packer Depth 2,731 ft. Size 6 3/4 in. Packer Depth ft. Size in.

Depth of Selective Zone Set ft.

Top Recorder Depth (Inside) 2,734 ft. Recorder Number 21083 Cap. 5,000 psi

Bottom Recorder Depth (Outside) 2,767 ft. Recorder Number 11073 Cap. 4,000 psi

Below Straddle Recorder Depth ft. Recorder Number Cap. psi

Drilling Contractor L. D. Drilling, Inc. - Rig 1 Drill Collar Length ft. I.D. in.

Mud Type Chemical Viscosity 43 Weight Pipe Length ft. I.D. in.

Weight 8.7 Water Loss 9.8 cc. Drill Pipe Length 2,711 ft. I.D. 3 1/2 in.

Chlorides 7,900 P.P.M. Test Tool Length 20 ft. Tool Size 3 1/2 - IF in.

Jars: Make Sterling Serial Number Not Run Anchor Length 39 ft. Size 4 1/2 - FH in.

Did Well Flow? No Reversed Out No Surface Choke Size 1 in. Bottom Choke Size 5/8 in.

Main Hole Size 7 7/8 in. Tool Joint Size 4 1/2 - XH in.

Blow: 1st Open: Weak, 1 1/2 in., blow decreasing & dead in 20 mins.

2nd Open: No blow.

Recovered 15 ft. of drilling mud = .153900 bbls.

Recovered ft. of

Recovered ft. of

Recovered ft. of

Recovered ft. of

Remarks

Time Set Packer(s) 7:30 ~~XXX~~ P.M. Time Started Off Bottom 9:30 ~~XXX~~ P.M. Maximum Temperature 95°

Initial Hydrostatic Pressure (A) 1309 P.S.I.

Initial Flow Period Minutes 30 (B) 15 P.S.I. to (C) 16 P.S.I.

Initial Closed In Period Minutes 30 (D) 43 P.S.I.

Final Flow Period Minutes 30 (E) 17 P.S.I. to (F) 18 P.S.I.

Final Closed In Period Minutes 30 (G) 30 P.S.I.

Final Hydrostatic Pressure (H) 1286 P.S.I.

GENERAL INFORMATION

Client Information:

Company: RITCHIE EXPLORATION INC
Contact: CRAIG CAULK
Phone: Fax: e-mail:

Site Information:

Contact: PETER FIORINI
Phone: Fax: e-mail:

Well Information:

Name: MAAG P TWIN #2
Operator: RITCHIE EXPLORATION INC
Location-Downhole: DST #1 2731 TO 2770
Location-Surface: S7/15S/13W RUSSELL COUNTY

Test Information:

Company: DIAMOND TESTING
Representative: JOHN RIEDL
Supervisor: PETER FIORINI
Test Type: CONVENTIONAL Job Number: D438
Test Unit: 2
Start Date: 2008/05/19 Start Time: 18:15:00
End Date: 2008/05/19 End Time: 22:50:00
Report Date: 2008/05/19 Prepared By: JOHN RIEDL
Qualified By: PETER FIORINI

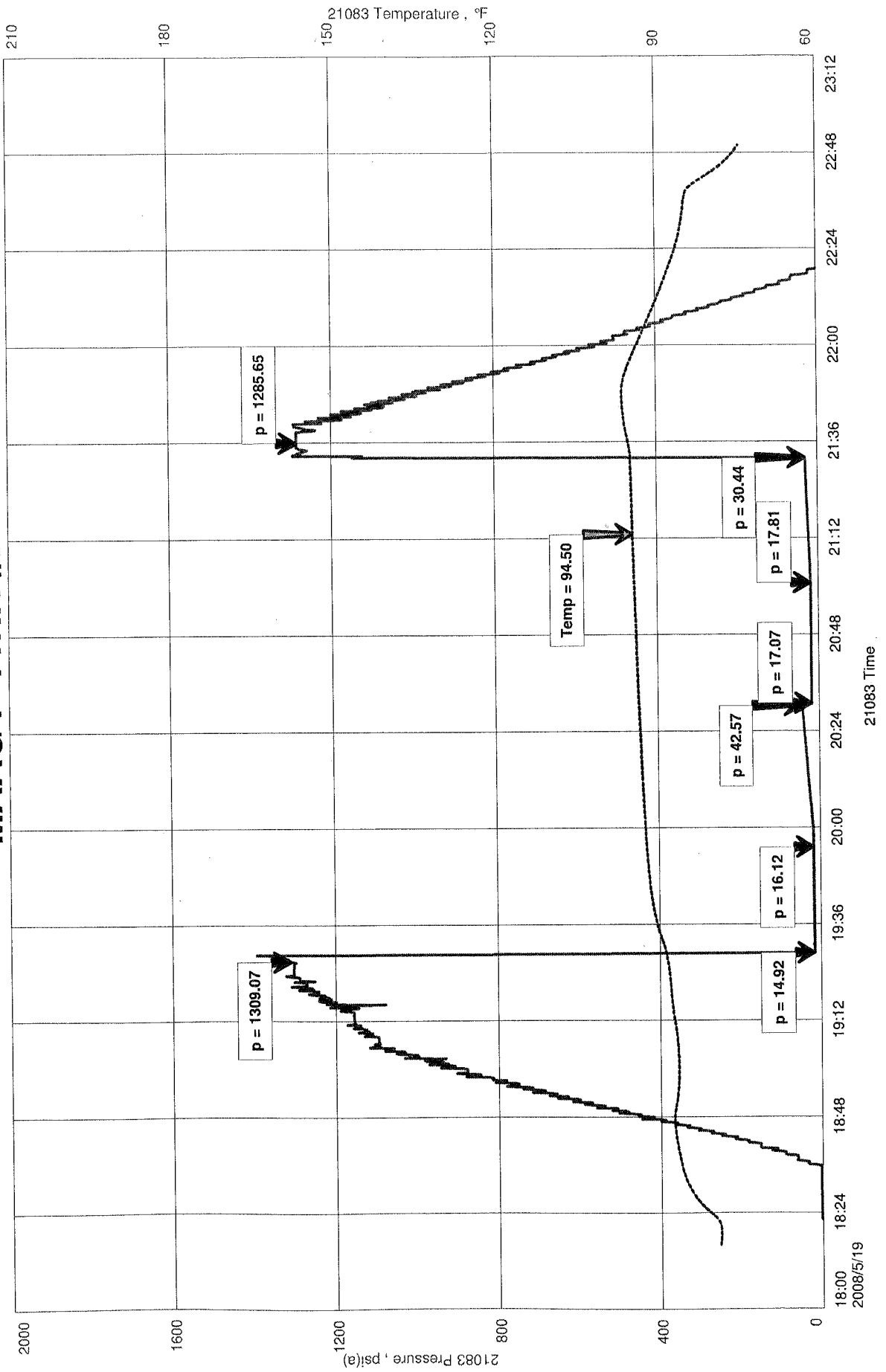
Remarks:

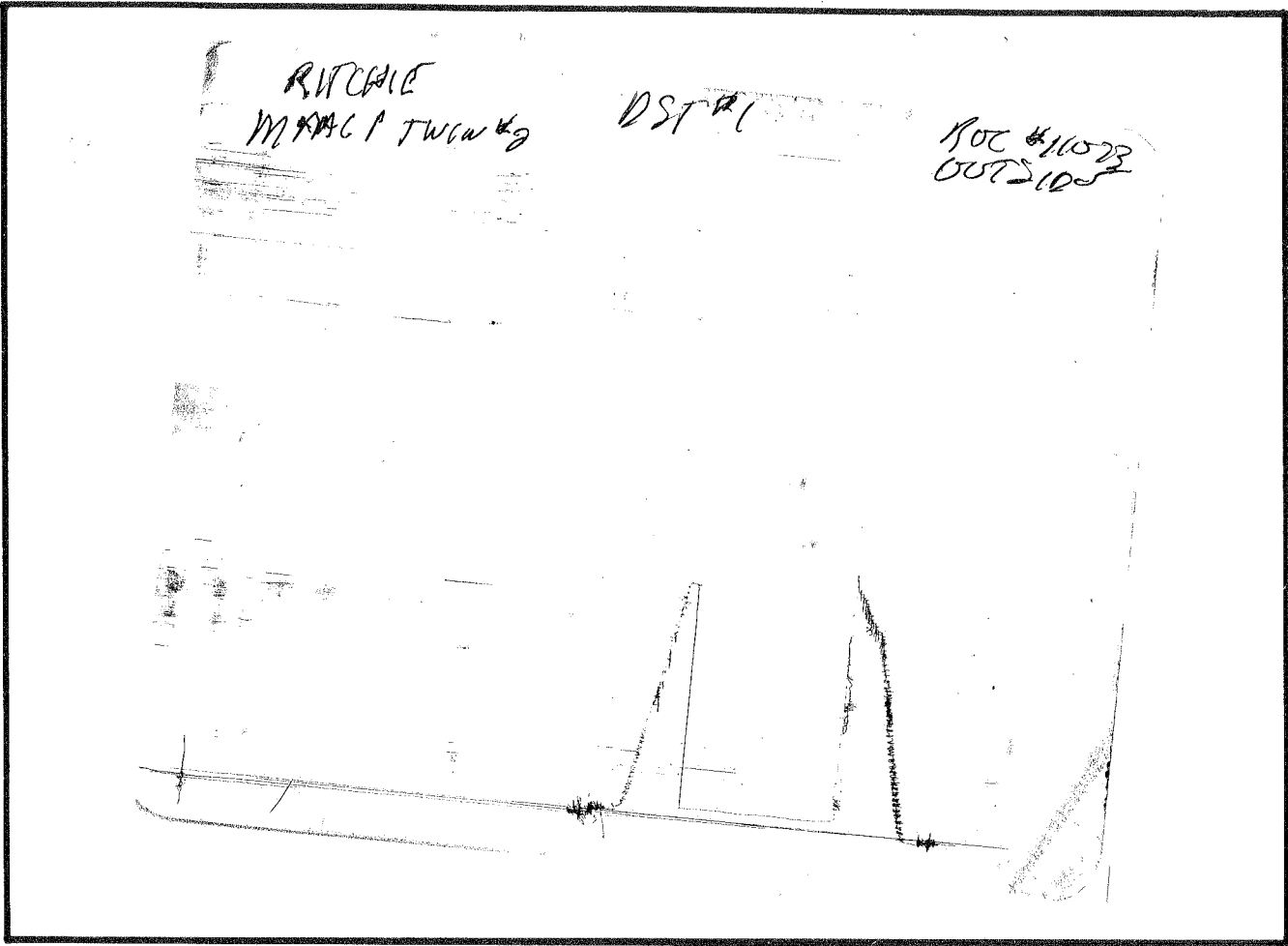
RECOVERY: 15' DRILLING MUD

MAAG P TWIN #2
Formation: UPPER TOPEKA
Job Number: D438

RITCHIE EXPLORATION INC
DST #1 2731 TO 2770
Start Test Date: 2008/05/19
Final Test Date: 2008/05/19

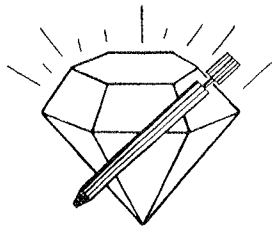
MAAG P TWIN #2





This is an actual photograph of recorder chart.

POINT	PRESSURE		PSI
	Field Reading	Elec. Office Reading	
(A) Initial Hydrostatic Mud	1309	1309	PSI
(B) First Initial Flow Pressure.....	15	15	PSI
(C) First Final Flow Pressure	16	16	PSI
(D) Initial Closed-in Pressure	43	43	PSI
(E) Second Initial Flow Pressure	17	17	PSI
(F) Second Final Flow Pressure.....	18	18	PSI
(G) Final Closed-in Pressure.....	30	30	PSI
(H) Final Hydrostatic Mud	1286	1286	PSI



DIAMOND TESTING

P.O. Box 157

HOISINGTON, KANSAS 67544

(620) 653-7550 • (800) 542-7313

STC 21083.D439

Page 1 of 2 Pages

Company Ritchie Exploration, Inc. Lease & Well No. Maag P Twin No. 2

Elevation 1879 KB Formation Topeka Effective Pay Ft. Ticket No. J2242

Date 5-20-08 Sec. 7 Twp. 15S Range 13W County Russell State Kansas

Test Approved By Peter Fiorini Diamond Representative John C. Riedl

Formation Test No. 2 Interval Tested from 2,928 ft. to 2,963 ft. Total Depth 2,963 ft.

Packer Depth 2,923 ft. Size 6 3/4 in. Packer Depth ft. Size in.

Packer Depth 2,928 ft. Size 6 3/4 in. Packer Depth ft. Size in.

Depth of Selective Zone Set ft.

Top Recorder Depth (Inside) 2,931 ft. Recorder Number 21083 Cap. 5,000 psi

Bottom Recorder Depth (Outside) 2,960 ft. Recorder Number 11073 Cap. 4,000 psi

Below Straddle Recorder Depth ft. Recorder Number Cap. psi

Drilling Contractor L. D. Drilling, Inc. - Rig 1 Drill Collar Length ft. I.D. in.

Mud Type Chemical Viscosity 42 Weight Pipe Length ft. I.D. in.

Weight 9.0 Water Loss 13.2 cc. Drill Pipe Length 2,908 ft. I.D. 3 1/2 in.

Chlorides 12,000 P.P.M. Test Tool Length 20 ft. Tool Size 3 1/2 - IF in.

Jars: Make Sterling Serial Number Not Run Anchor Length 35 ft. Size 4 1/2 - FH in.

Did Well Flow? No Reversed Out No Surface Choke Size 1 in. Bottom Choke Size 5/8 in.

Main Hole Size 7 7/8 in. Tool Joint Size 4 1/2 - XH in.

Blow: 1st Open: Weak, surface blow building to 1/2 in.

2nd open: Weak blow, slowly building to 1 in.

Recovered 30 ft. of oil specked watery mud = .307800 bbls. (Grind out: 30%-water; 70%-mud) Chlorides: 14,000 Ppm

Recovered ft. of

Recovered ft. of

Recovered ft. of

Recovered ft. of

Remarks

Time Set Packer(s) 3:35 ~~AM~~ P.M. Time Started Off Bottom 5:35 ~~AM~~ P.M. Maximum Temperature 101 °

Initial Hydrostatic Pressure (A) 1431 P.S.I.

Initial Flow Period Minutes 30 (B) 8 P.S.I. to (C) 15 P.S.I.

Initial Closed In Period Minutes 30 (D) 982 P.S.I.

Final Flow Period Minutes 30 (E) 17 P.S.I. to (F) 27 P.S.I.

Final Closed In Period Minutes 30 (G) 906 P.S.I.

Final Hydrostatic Pressure (H) 1406 P.S.I.

GENERAL INFORMATION

Client Information:

Company: RITCHIE EXPLORATION INC

Contact: CRAIG CAULK

Phone: Fax: e-mail:

Site Information:

Contact: PETER FIORINI

Phone: Fax: e-mail:

Well Information:

Name: MAAG P TWIN#2

Operator: RITCHIE EXPLORATION INC

Location-Downhole: DST2 2928 TO 2963

Location-Surface: S7/15S/13W RUSSELL COUNTY

Test Information:

Company: DIAMOND TESTING

Representative: JOHN RIEDL

Supervisor: PETER FIORINI

Test Type: CONVENTIONAL

Job Number: D439

Test Unit: 2

Start Date: 2008/05/20

Start Time: 14:10:00

End Date: 2008/05/20

End Time: 19:00:00

Report Date: 2008/05/20

Prepared By: JOHN RIEDL

Remarks:

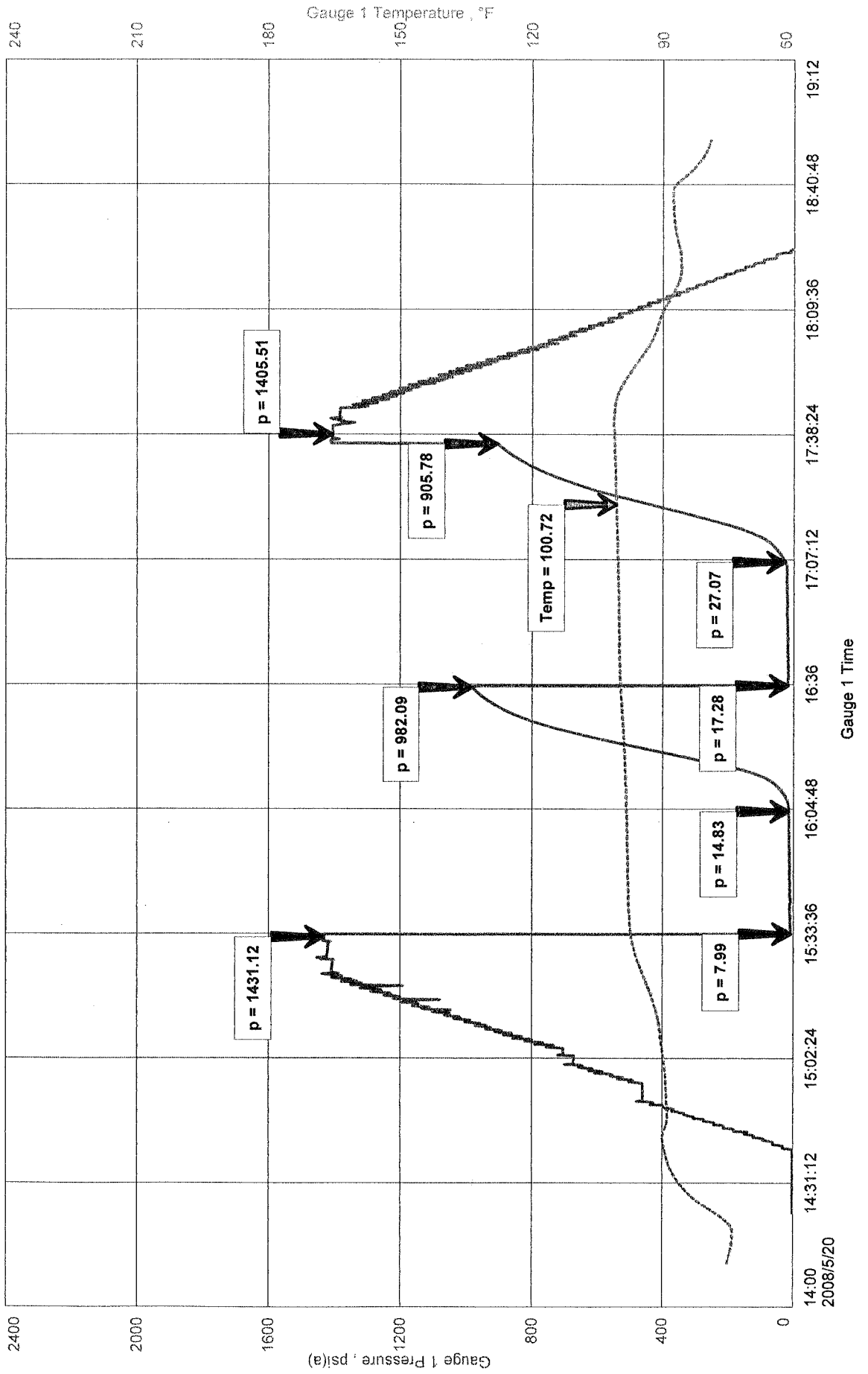
Qualified By: PETER FIORINI

RECOVERY: 30' OIL SPECKED WATERY MUD

RITCHIE EXPLORATION INC
DST2 2928 TO 2963
Start Test Date: 2008/05/20
Final Test Date: 2008/05/20

MAAG P TWIN#2
Formation: TOPEKA
Job Number: D439

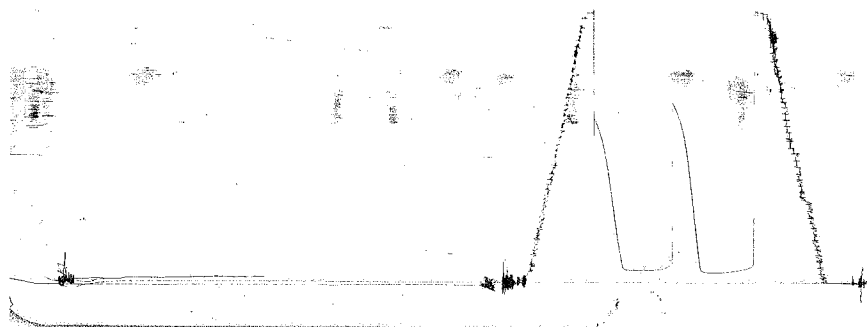
MAAG P TWIN#2



RITCHIE EXPC
MAG PTW1W#2

DST#2

RECH11073
OUTSIDE



This is an actual photograph of recorder chart.

POINT	PRESSURE		PSI
	Field Reading	Elec. Office Reading	
(A) Initial Hydrostatic Mud	1431	1431	PSI
(B) First Initial Flow Pressure	8	8	PSI
(C) First Final Flow Pressure	15	15	PSI
(D) Initial Closed-in Pressure	982	982	PSI
(E) Second Initial Flow Pressure	17	17	PSI
(F) Second Final Flow Pressure	27	27	PSI
(G) Final Closed-in Pressure	906	906	PSI
(H) Final Hydrostatic Mud	1406	1406	PSI