

Computer inventoried

WELL NAME: Boomhower #1
COMPANY: Foundation Resources L.L.C.
LOCATION: 19-15S-13W
Russell County, Kansas
DATE: 12/5/97

ORIGINAL

15-167-23151

RECEIVED
KANSAS CORPORATION COMMISSION

FEB 08 1998

CONSERVATION DIVISION
NIGHTINGALE

TRILOBITE TESTING L.L.C.

OPERATOR : Foundation Resources

DATE 12-3-97

WELL NAME: Boomhower #1

KB 1861.00 ft

TICKET NO: 10851

DST #1

LOCATION : 19-15S-13W Russell Co. KS

GR 1856.00 ft

FORMATION: LKC "B"

INTERVAL : 3055.00 To 3100.00 ft

TD 3100.00 ft

TEST TYPE: CONV

RECORDER DATA

Mins	Field	1	2	3	4	TIME DATA-----
PF 15 Rec.	6234	6234				PF Fr. 0145 to 0200 hr
SI 30 Range(Psi)	4500.0	4500.0	0.0	0.0	0.0	IS Fr. 0200 to 0230 hr
SF 15 Clock(hrs)	12 hr	12 hr				SF Fr. 0230 to 0245 hr
FS 15 Depth(ft)	3058.0	3058.0	0.0	0.0	0.0	FS Fr. 0245 to 0300 hr

	Field	1	2	3	4	
A. Init Hydro	1504.0	1513.0	0.0	0.0	0.0	T STARTED 0020 hr
B. First Flow	34.0	48.0	0.0	0.0	0.0	T ON BOTM 0130 hr
B1. Final Flow	34.0	46.0	0.0	0.0	0.0	T OPEN 0145 hr
C. In Shut-in	36.0	46.0	0.0	0.0	0.0	T PULLED 0300 hr
D. Init Flow	36.0	46.0	0.0	0.0	0.0	T OUT 0430 hr
E. Final Flow	36.0	46.0	0.0	0.0	0.0	
F. Fl Shut-in	36.0	46.0	0.0	0.0	0.0	
G. Final Hydro	1482.0	1445.0	0.0	0.0	0.0	TOOL DATA-----
Inside/Outside	i	i				Tool Wt. 2000.00 lbs
						Wt Set On Packer 20000.00 lbs
						Wt Pulled Loose 0.00 lbs
						Initial Str Wt 40000.00 lbs
						Unseated Str Wt 40000.00 lbs
						Bot Choke 0.75 in
						Hole Size 7.88 in
						D Col. ID 2.25 in
						D. Pipe ID 3.80 in
						D.C. Length 0.00 ft
						D.P. Length 3033.00 ft

RECOVERY

Tot Fluid 10.00 ft of 0.00 ft in DC and 10.00 ft in DP
 10.00 ft of drilling mud
 0.00 ft of
 0.00 ft of
 0.00 ft of
 0.00 ft of
 0.00 ft of
 0.00 ft of
 0.00 ft of

SALINITY 0.00 P.P.M. A.P.I. Gravity 0.00

BLOW DESCRIPTION

Initial Flow: Weak blow.

Final Flow: No blow.

MUD DATA-----

Mud Type	Chem
Weight	9.40 lb/c
Vis.	41.00 S/L
W.L.	1.60 in ³
F.C.	0.00 in
Mud Drop	

Amt. of fill 0.00 ft
 Btm. H. Temp. 101.00 F
 Hole Condition good
 % Porosity 0.00
 Packer Size 6.75 in
 No. of Packers 2
 Cushion Amt. 0.00
 Cushion Type
 Reversed Out
 Tool Chased

SAMPLES:

SENT TO:

Tester John Riedl
 Co. Rep. Bob Stolzle
 Contr. Vonfeldt
 Rig #
 Unit # KANSAS CORPORATION COMMISSION
 Pump T.

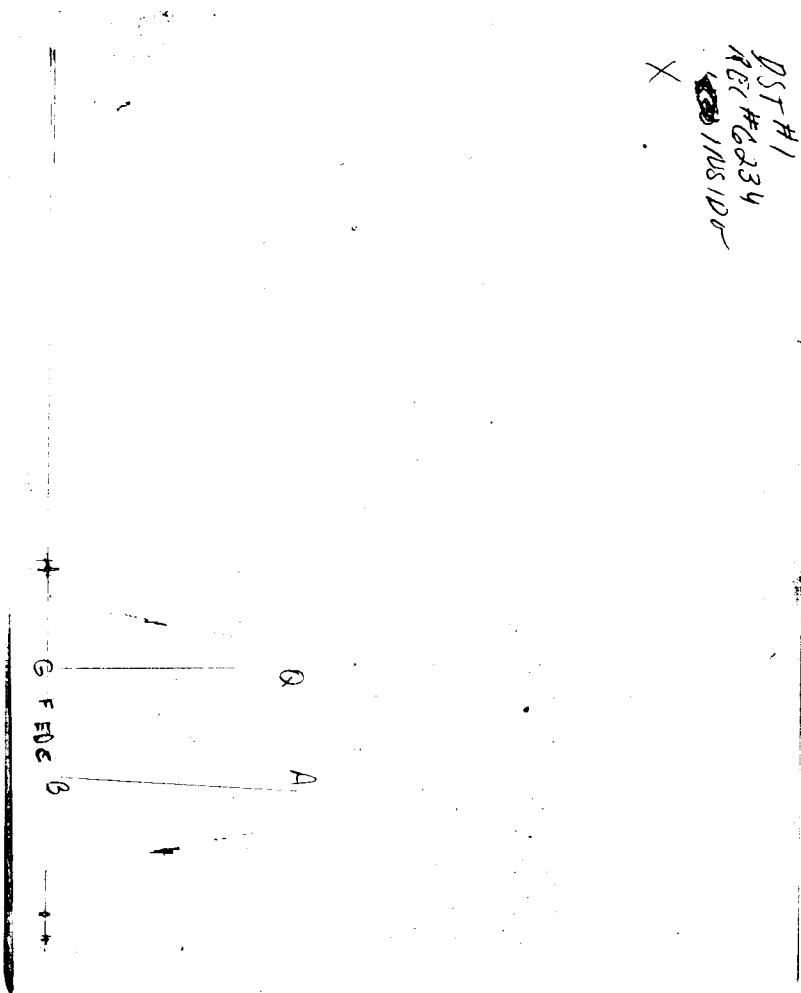
Test Successful: Y

RECEIVED 1
 FEB 06 1998

CONSERVATION DIVISION
 WICHITA, KS

CHART PAGE

DST #1
AGL #6234
INSIDR
X



This is a photocopy of the actual AK-1 recorder chart

RECEIVED
KANSAS CORPORATION COMMISSION

FEB 06 1998

CONSERVATION DIVISION
WICHITA, KS

TRILOBITE TESTING L.L.C.

OPERATOR : Foundation Resources

DATE 12-4-97

WELL NAME: Boomhower #1

KB 1861.00 ft

TICKET NO: 10852 DST #2

LOCATION : 19-15S-13W Russell Co. KS

GR 1856.00 ft

FORMATION: Arbuckle

INTERVAL : 3275.00 To 3307.00 ft

TD 3307.00 ft

TEST TYPE: CONV

RECORDER DATA

Mins	Field	1	2	3	4	TIME DATA-----
PF 15 Rec.	10330	10330				PF Fr. 0210 to 0225 hr
SI 30 Range(Psi)	4000.0	4000.0	0.0	0.0	0.0	IS Fr. 0225 to 0255 hr
SF 45 Clock(hrs)	12 hr	12 hr				SF Fr. 0255 to 0340 hr
FS 60 Depth(ft)	3304.0	3304.0	0.0	0.0	0.0	FS Fr. 0340 to 0440 hr

	Field	1	2	3	4
A. Init Hydro	1640.0	1677.0	0.0	0.0	0.0
B. First Flow	30.0	59.0	0.0	0.0	0.0
B1. Final Flow	34.0	53.0	0.0	0.0	0.0
C. In Shut-in	845.0	865.0	0.0	0.0	0.0
D. Init Flow	60.0	90.0	0.0	0.0	0.0
E. Final Flow	90.0	124.0	0.0	0.0	0.0
F. Fl Shut-in	870.0	876.0	0.0	0.0	0.0
G. Final Hydro	1610.0	1653.0	0.0	0.0	0.0
Inside/Outside	o	o			

T STARTED 0030 hr
T ON BOTM 0205 hr
T OPEN 0210 hr
T PULLED 0440 hr
T OUT 0800 hr

TOOL DATA-----

Tool Wt. 2000.00 lbs
Wt Set On Packer 20000.00 lbs
Wt Pulled Loose 60000.00 lbs
Initial Str Wt 44000.00 lbs
Unseated Str Wt 45000.00 lbs
Bot Choke 0.75 in
Hole Size 7.88 in
D Col. ID 2.25 in
D. Pipe ID 3.80 in
D.C. Length 0.00 ft
D.P. Length 3253.00 ft

RECOVERY

Tot Fluid 330.00 ft of 0.00 ft in DC and 330.00 ft in DP
180.00 ft of Gas in pipe.
90.00 ft of Gassy clean oil 10%gas 90%oil
120.00 ft of Gassy mud & water cut oil 10%g 55%o 15%w 20%
120.00 ft of Oil cut muddy water 2%oil 78%water 20%mud
0.00 ft of
0.00 ft of
0.00 ft of
0.00 ft of

SALINITY 22000.00 P.P.M. A.P.I. Gravity 60.00

MUD DATA-----

Mud Type	Chem
Weight	9.40 lb/cf
Vis.	44.00 S/L
W.L.	10.80 in3
F.C.	0.00 in
Mud Drop	

BLOW DESCRIPTION

Initial Flow: Strong blow. Bottom of bucket in 8 min.

Initial Shutin: Weak blow back.

Final Flow: Strong blow. Bottom of bucket in 15 min.

Final Shutin: Weak blow back.

Amt. of fill	0.00 ft
Btm. H. Temp.	106.00 F
Hole Condition	
% Porosity	0.00
Packer Size	6.75 in
No. of Packers	2
Cushion Amt.	0.00
Cushion Type	
Reversed Out	
Tool Chased	

SAMPLES:

SENT TO:

Tester John Riedl
Co. Rep. Bob Stolzle
Contr. Vonfeldt
Rig # 1
Unit # KANSAS CORPORATION COMMISSION
Pump T.

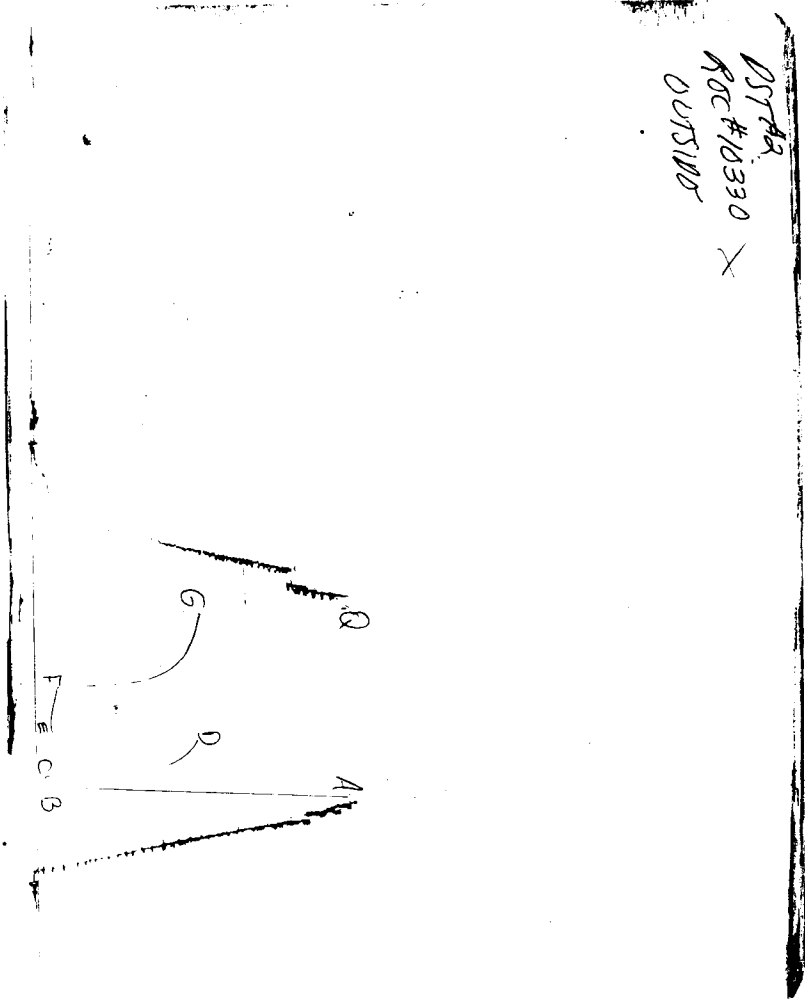
Test Successful: Y

FEB 08 1998

CONSERVATION DIVISION
WICHITA, KS

CHART PAGE

DST#A
REC #10330 X
OUTSIDE



This is a photocopy of the actual AK-1 recorder chart

RECEIVED
KANSAS CORPORATION COMMISSION

FEB 06 1998

CONSERVATION DIVISION
MICHIGAN, MS