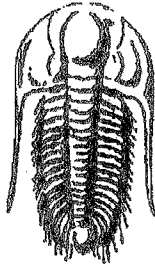


15-167-23682

36-15s-14w



**TRILOBITE  
TESTING, INC.**

## DRILL STEM TEST REPORT

Prepared For: **Aleo Oil**

5907 W. Broadway  
Gt. Bend, Ks  
67530

ATTN: Steve Murphy

**36-15-14 Russell KS**

**Rudolf Deines #2**

Start Date: 2011.01.17 @ 18:32:27

End Date: 2011.01.18 @ 00:04:26

Job Ticket #: 41417                      DST #: 1

RECEIVED

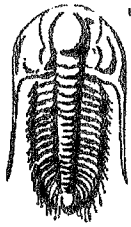
APR 13 2011

KCC WICHITA

Trilobite Testing, Inc

PO Box 1733 Hays, KS 67601

ph: 785-625-4778 fax: 785-625-5620



**TRILOBITE  
TESTING, INC**

**DRILL STEM TEST REPORT**

**TOOL DIAGRAM**

Aleo Oil  
5907 W. Broadway  
Gt. Bend, Ks  
67530  
ATTN: Steve Murphy

**Rudolf Deines #2**  
**36-15-14 Russell KS**  
Job Ticket: 41417      **DST#: 1**  
Test Start: 2011.01.17 @ 18:32:27

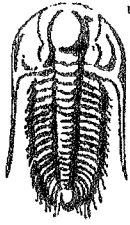
**Tool Information**

Drill Pipe:	Length: 3267.00 ft	Diameter: 3.80 inches	Volume: 45.83 bbl	Tool Weight: 2500.00 lb
Heavy Wt. Pipe:	Length: 0.00 ft	Diameter: 0.00 inches	Volume: 0.00 bbl	Weight set on Packer: 25000.00 lb
Drill Collar:	Length: 0.00 ft	Diameter: 0.00 inches	Volume: 0.00 bbl	Weight to Pull Loose: 52000.00 lb
			<u>Total Volume: 45.83 bbl</u>	Tool Chased 0.00 ft
Drill Pipe Above KB:	15.00 ft			String Weight: Initial 36000.00 lb
Depth to Top Packer:	3279.00 ft			Final 42000.00 lb
Depth to Bottom Packer:	ft			
Interval between Packers:	19.00 ft			
Tool Length:	46.00 ft			
Number of Packers:	2	Diameter: 6.75 inches		

Tool Comments:

Tool Description	Length (ft)	Serial No.	Position	Depth (ft)	Accum. Lengths
Shut In Tool	5.00			3257.00	
Hydraulic tool	5.00			3262.00	
Jars	5.00			3267.00	
Safety Joint	2.00			3269.00	
Packer	5.00			3274.00	27.00      Bottom Of Top Packer
Packer	5.00			3279.00	
Stubb	1.00			3280.00	
Recorder	0.00	8372	Inside	3280.00	
Recorder	0.00	8365	Outside	3280.00	
Perforations	15.00			3295.00	
Bullnose	3.00			3298.00	19.00      Bottom Packers & Anchor

**Total Tool Length: 46.00**



**TRILOBITE  
TESTING, INC**

# DRILL STEM TEST REPORT

**FLUID SUMMARY**

Aleo Oil  
5907 W. Broadway  
Gt. Bend, Ks  
67530  
ATTN: Steve Murphy

**Rudolf Deines #2**  
**36-15-14 Russell KS**  
Job Ticket: 41417      DST#: 1  
Test Start: 2011.01.17 @ 18:32:27

## Mud and Cushion Information

Mud Type: Gel Chem	Cushion Type:	Oil API: 36 deg API
Mud Weight: 9.00 lb/gal	Cushion Length: ft	Water Salinity: 49000 ppm
Viscosity: 45.00 sec/qt	Cushion Volume: bbl	
Water Loss: 9.97 in <sup>3</sup>	Gas Cushion Type:	
Resistivity: ohm.m	Gas Cushion Pressure: psig	
Salinity: 6700.00 ppm		
Filter Cake: inches		

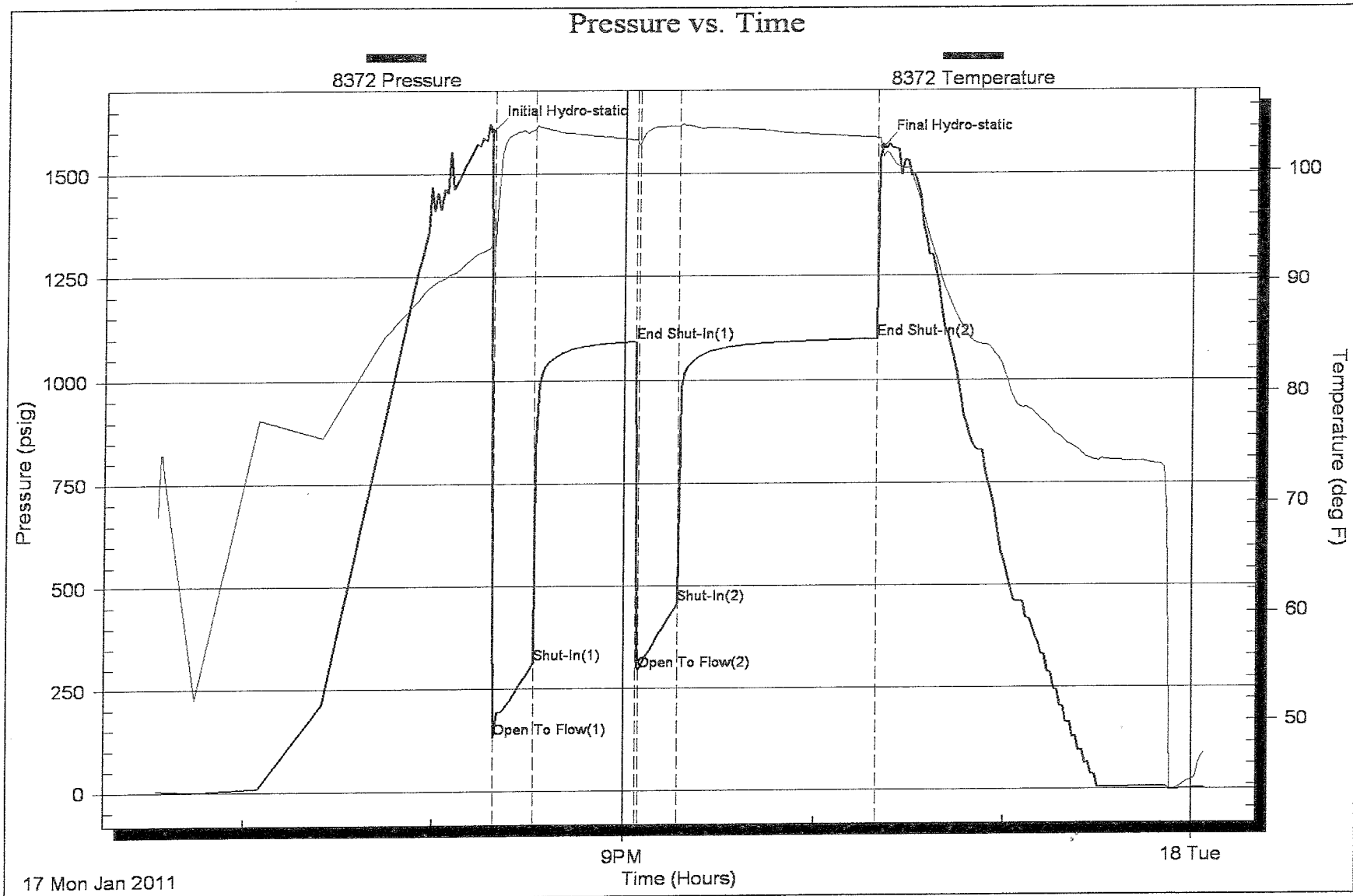
## Recovery Information

Recovery Table

Length ft	Description	Volume bbl
280.00	MW 95%W, 5%M	3.928
410.00	GM & OCW 30%G, 10%O, 55%W, 5%M	5.751
270.00	SOCWM 5%O, 25%W, 70%M	3.787
20.00	FREE OIL 95%O, 5%M	0.281
0.00	80' GIP	0.000

Total Length: 980.00 ft      Total Volume: 13.747 bbl  
 Num Fluid Samples: 0      Num Gas Bombs: 0      Serial #:  
 Laboratory Name:      Laboratory Location:  
 Recovery Comments: RW .262. @ 42F = 49000 chlorides







# TRILOBITE TESTING INC.

P.O. Box 1733 • Hays, Kansas 67601

RECEIVED  
JAN 8 2011  
BY: \_\_\_\_\_

## Test Ticket

NO. 041417 15289

4/10

Well Name & No. Rudolf Deines #2 Test No. 1 Date 1-17-11  
 Company Aleg O.1 Elevation 1860 KB 1852 GL  
 Address 5907 W. Broadway Ct, Bend, KS 67530  
 Co. Rep / Geo. Steve Murphy Rig Southwind 1  
 Location: Sec. 36 Twp. 15<sup>s</sup> Rge. 14<sup>w</sup> Co. Russell State Ks

Interval Tested 3278-3298 Zone Tested Arbuckle  
 Anchor Length 19 Drill Pipe Run 3267 Mud Wt. 9.3  
 Top Packer Depth 3273 Drill Collars Run — Vis 45  
 Bottom Packer Depth 3278 Wt. Pipe Run — WL 10.0  
 Total Depth 3298 Chlorides 6700 ppm System LCM  
 Blow Description IIFP- BOB 50 sec  
ISI- no blow back  
FFP- BOB 1 min  
FSI- no blow back

Rec	Feet of	%gas	%oil	%water	%mud
80	GIP				
20	Free O.1		95		5
270	SOCWM		5	25	70
410	GM+OCW	30	10	55	5
280	MW		95		5

Rec Total 980 BHT 103 Gravity 36 API RW .262 @ 42 ° F Chlorides 49,000 ppm

(A) Initial Hydrostatic 1603  Test 1125 T-On Location 1734  
 (B) First Initial Flow 131  Jars 250 T-Started 1832  
 (C) First Final Flow 314  Safety Joint 75 T-Open 2019  
 (D) Initial Shut-In 1093  Circ Sub \_\_\_\_\_ T-Pulled 2219  
 (E) Second Initial Flow 295  Hourly Standby \_\_\_\_\_ T-Out 0004  
 (F) Second Final Flow 458  Mileage 99 RT x 2 198 Comments \_\_\_\_\_  
 (G) Final Shut-In 1098  Sampler 24750 mileage to load tools  
 (H) Final Hydrostatic 1564  Straddle \_\_\_\_\_  Ruined Shale Packer \_\_\_\_\_  
 Shale Packer \_\_\_\_\_  Ruined Packer \_\_\_\_\_  
 Extra Packer \_\_\_\_\_  Extra Copies \_\_\_\_\_  
 Extra Recorder \_\_\_\_\_ Sub Total 0  
 Day Standby \_\_\_\_\_ Total 1169750  
 Accessibility \_\_\_\_\_ MP/DST Disc't \_\_\_\_\_  
 Sub Total 11697.50

Approved By \_\_\_\_\_ Our Representative Brian Farbank

Trilobite Testing Inc. shall not be liable for damaged of any kind of the property or personnel of the one for whom a test is made, or for any loss suffered or sustained, directly or indirectly, through the use of its equipment, or its statements or opinion concerning the results of any test, tools lost or damaged in the hole shall be paid for at cost by the party for whom the test is made.