

15-063-21713

27-15-26w

DIAMOND TESTING
P.O. Box 157
HOISINGTON, KANSAS 67544
(620) 653-7550 • (800) 542-7313

Company Mull Drilling Company, Inc. Lease & Well No. Thornburg Trust No. 1-27
Elevation 2507 KB Formation Lansing "H" Effective Pay -- Ft. Ticket No. C 56
Date 6-03-08 Sec. 27 Twp. 15S Range 26W County Gove State Kansas
Test Approved By Kevin L. Kessler Diamond Representative Chris Redetzke

Formation Test No. 1 Interval Tested from 3,929 ft. to 3,979 ft. Total Depth 3,979 ft.
Packer Depth 3,924 ft. Size 6 3/4 in. Packer Depth -- ft. Size -- in.
Packer Depth 3,929 ft. Size 6 3/4 in. Packer Depth -- ft. Size -- in.
Depth of Selective Zone Set ft.

Top Recorder Depth (Inside) 3,932 ft. Recorder Number 30035 Cap. 5,000 psi
Bottom Recorder Depth (Outside) 3,976 ft. Recorder Number 13387 Cap. 4,000 psi
Below Straddle Recorder Depth ft. Recorder Number Cap. psi

Drilling Contractor Duke Drilling Co., Inc. - Rig 4 Drill Collar Length -- ft. I.D. -- in.
Mud Type Chemical Viscosity 47 Weight Pipe Length -- ft. I.D. -- in.
Weight 9.1 Water Loss 9.6 cc. Drill Pipe Length 3,909 ft. I.D. 3 1/2 in.
Chlorides 3,200 P.P.M. Test Tool Length 20 ft. Tool Size 3 1/2 - IF in.
Jars: Make Sterling Serial Number Not Run Anchor Length 50 ft. Size 4 1/2 - FH in.
Did Well Flow? No Reversed Out No Surface Choke Size 1 in. Bottom Choke Size 5/8 in.
Main Hole Size 7 7/8 in. Tool Joint Size 4 1/2 - XH in.

Blow: 1st Open: Very weak surface blow. No blow back during shut-in.
2nd Open: Very weak surface blow. No blow back during shut-in.

Recovered 5 ft. of mud = .064400 bbls. (Grind out: 100%-mud)

Recovered ft. of

Recovered ft. of

Recovered ft. of

Recovered ft. of

Remarks Tool Sample Grind Out: mud with a few oil specks

Time Set Packer(s) 4:07 ~~XXX~~ P.M. Time Started Off Bottom 6:17 ~~XXX~~ P.M. Maximum Temperature 121°

Initial Hydrostatic Pressure (A) 1903 P.S.I.

Initial Flow Period Minutes 10 (B) 25 P.S.I. to (C) 27 P.S.I.

Initial Closed In Period Minutes 30 (D) 610 P.S.I.

Final Flow Period Minutes 30 (E) 26 P.S.I. to (F) 27 P.S.I.

Final Closed In Period Minutes 60 (G) 603 P.S.I.

Final Hydrostatic Pressure (H) 1910 P.S.I.

GENERAL INFORMATION

Client Information:

Company: MULL DRILLING CO.

Contact: ERNIE MORRISON

Phone: Fax: e-mail:

Site Information:

Contact: KEVIN KESSLER

Phone: Fax: e-mail:

Well Information:

Name: THORNBURG TRUST #1-27

Operator: MULL DRILLING CO.

Location-Downhole: DST #1 LANSING 'H' 3,929 - 3,979

Location-Surface: sec 27-15S-26W GOVE COUNTY

Test Information:

Company: DIAMOND TESTING

Representative: CHRIS

Supervisor: KEVIN KESSLER

Test Type: CONVENTIONAL

Job Number:

Test Unit: NO. 1

Start Date: 2008/06/03

Start Time: 14:17:00

End Date: 2008/06/03

End Time: 19:52:00

Report Date:

Prepared By:

Remarks:

Qualified By:

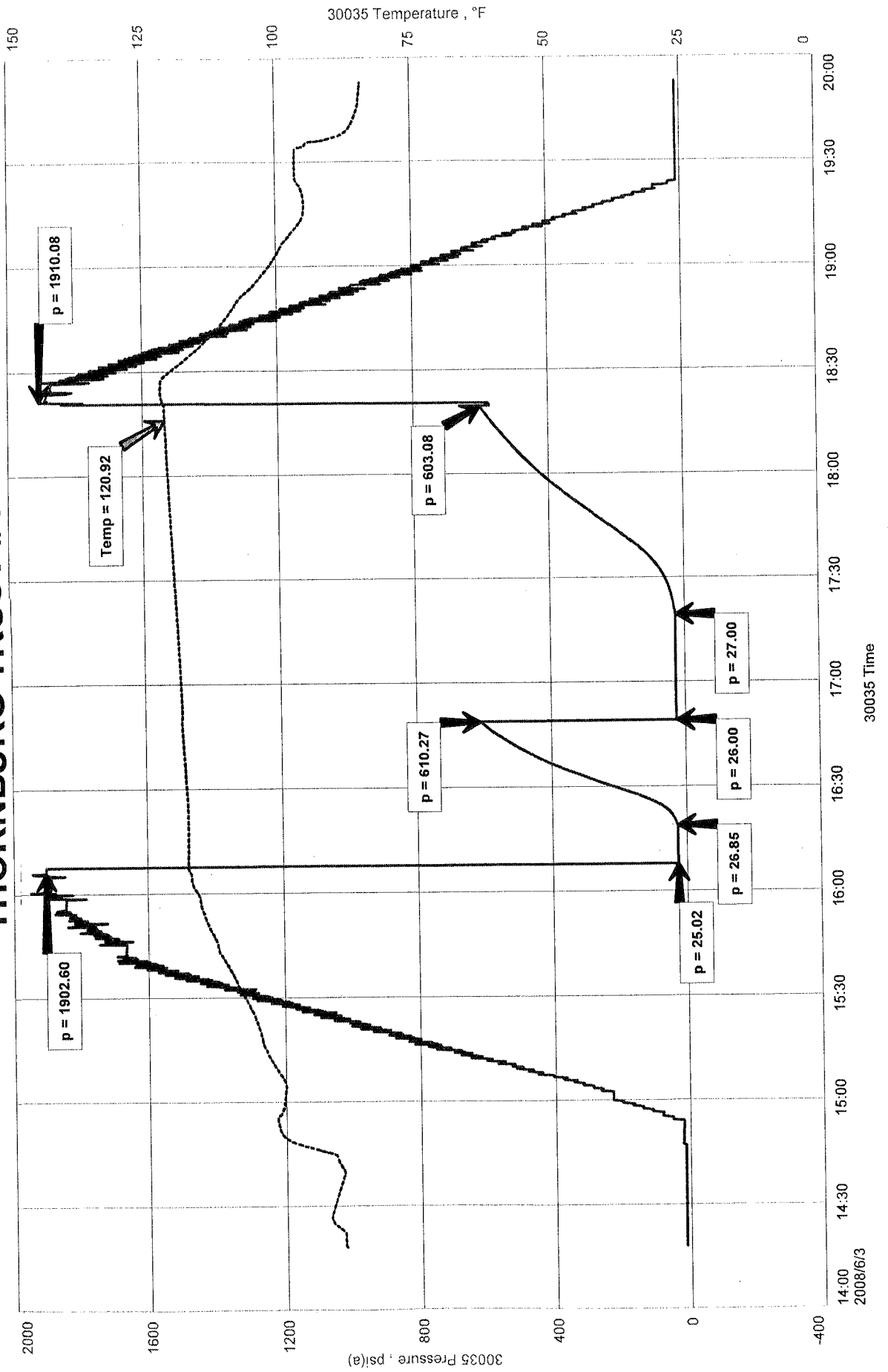
RECOVERED: 5' MUD 100% MUD

TOOL SAMPLE: MUD WITH FEW OIL SPECS

THORNBERG TRUST #1-27
 Formation: DST #1 LANSING 'H' 3,929 - 3,979
 Pool: WILDCAT

MULL DRILLING CO.
 DST #1 LANSING 'H' 3,929 - 3,979
 Start Test Date: 2008/06/03
 Final Test Date: 2008/06/03

THORNBERG TRUST #1-27

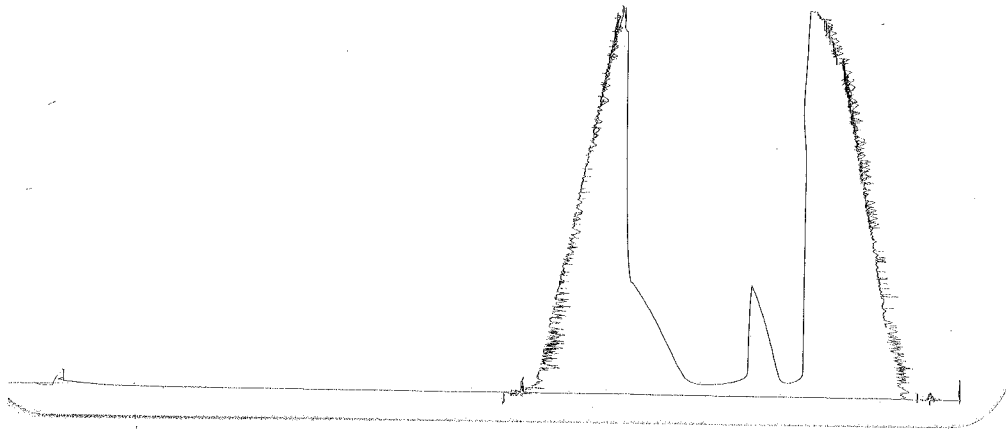


DST #1

Outside 13387 3929-3979

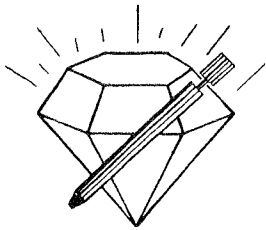
Lansing 'H'

Loc. 3976



This is an actual photograph of recorder chart.

POINT	PRESSURE		
	Field Reading	Elec. Office Reading	
(A) Initial Hydrostatic Mud	1903	1903	PSI
(B) First Initial Flow Pressure.....	25	25	PSI
(C) First Final Flow Pressure	27	27	PSI
(D) Initial Closed-in Pressure	610	610	PSI
(E) Second Initial Flow Pressure.....	26	26	PSI
(F) Second Final Flow Pressure.....	27	27	PSI
(G) Final Closed-in Pressure.....	603	603	PSI
(H) Final Hydrostatic Mud.....	1910	1910	PSI



DIAMOND TESTING

P.O. Box 157
HOISINGTON, KANSAS 67544
(620) 653-7550 • (800) 542-7313

Company Mull Drilling Company, Inc. Lease & Well No. Thornburg Trust No. 1-27
Elevation 2507 KB Formation Lansing "I" Effective Pay --- Ft. Ticket No. C 57
Date 6-04-08 Sec. 27 Twp. 15S Range 26W County Gove State Kansas
Test Approved By Kevin L. Kessler Diamond Representative Chris Redetzke

Formation Test No. 2 Interval Tested from 3,960 ft. to 4,000 ft. Total Depth 4,000 ft.
Packer Depth 3,955 ft. Size 6 3/4 in. Packer Depth --- ft. Size --- in.
Packer Depth 3,960 ft. Size 6 3/4 in. Packer Depth --- ft. Size --- in.
Depth of Selective Zone Set --- ft.

Top Recorder Depth (Inside) 3,963 ft. Recorder Number 30035 Cap. 5,000 psi
Bottom Recorder Depth (Outside) 3,997 ft. Recorder Number 13387 Cap. 4,000 psi
Below Straddle Recorder Depth --- ft. Recorder Number --- Cap. --- psi

Drilling Contractor Duke Drilling Co., Inc. - Rig 4 Drill Collar Length --- ft. I.D. --- in.
Mud Type Chemical Viscosity 47 Weight Pipe Length --- ft. I.D. --- in.
Weight 9.1 Water Loss 9.6 cc. Drill Pipe Length 3,940 ft. I.D. 3 1/2 in.
Chlorides 3,200 P.P.M. Test Tool Length 20 ft. Tool Size 3 1/2 - IF in.
Jars: Make Sterling Serial Number Not Run Anchor Length 40 ft. Size 4 1/2 - FH in.
Did Well Flow? No Reversed Out No Surface Choke Size 1 in. Bottom Choke Size 5/8 in.
Main Hole Size 7 7/8 in. Tool Joint Size 4 1/2 - XH in.

Blow: 1st Open: Weak, 1/2 in., blow increasing to 3/4 in. No blow back during shut-in.
2nd Open: Very weak surface blow. Died in 15 mins. No blow back during shut-in.

Recovered 3 ft. of mud = .038640 bbls. (Grind out: 100%-mud with a few oil specks)

Recovered --- ft. of ---

Recovered --- ft. of ---

Recovered --- ft. of ---

Recovered --- ft. of ---

Remarks Tool Sample Grind Out: Mud with a few oil specks

Time Set Packer(s) 4:55 ~~RXX~~ ^{A.M.} Time Started Off Bottom 7:05 ~~RXX~~ ^{A.M.} Maximum Temperature 117°
Initial Hydrostatic Pressure (A) 1915 P.S.I.
Initial Flow Period Minutes 10 (B) 25 P.S.I. to (C) 25 P.S.I.
Initial Closed In Period Minutes 30 (D) 655 P.S.I.
Final Flow Period Minutes 30 (E) 26 P.S.I. to (F) 27 P.S.I.
Final Closed In Period Minutes 60 (G) 632 P.S.I.
Final Hydrostatic Pressure (H) 1894 P.S.I.

GENERAL INFORMATION

Client Information:

Company: MULL DRILLING CO.
Contact: ERNIE MORRISON
Phone: Fax: e-mail:

Site Information:

Contact: KEVIN KESSLER
Phone: Fax: e-mail:

Well Information:

Name: THORNBURG TRUST #1-27
Operator: MULL DRILLING CO.
Location-Downhole: DST #2 LANSING 'I' 3,960 - 4,000
Location-Surface: sec 27-15S-26W GOVE COUNTY

Test Information:

Company:	DIAMOND TESTING		
Representative:	CHRIS		
Supervisor:	KEVIN KESSLER		
Test Type:	CONVENTIONAL	Job Number:	
Test Unit:	NO. 1		
Start Date:	2008/06/04	Start Time:	03:17:00
End Date:	2008/06/04	End Time:	09:07:00
Report Date:		Prepared By:	
<u>Remarks:</u>		Qualified By:	

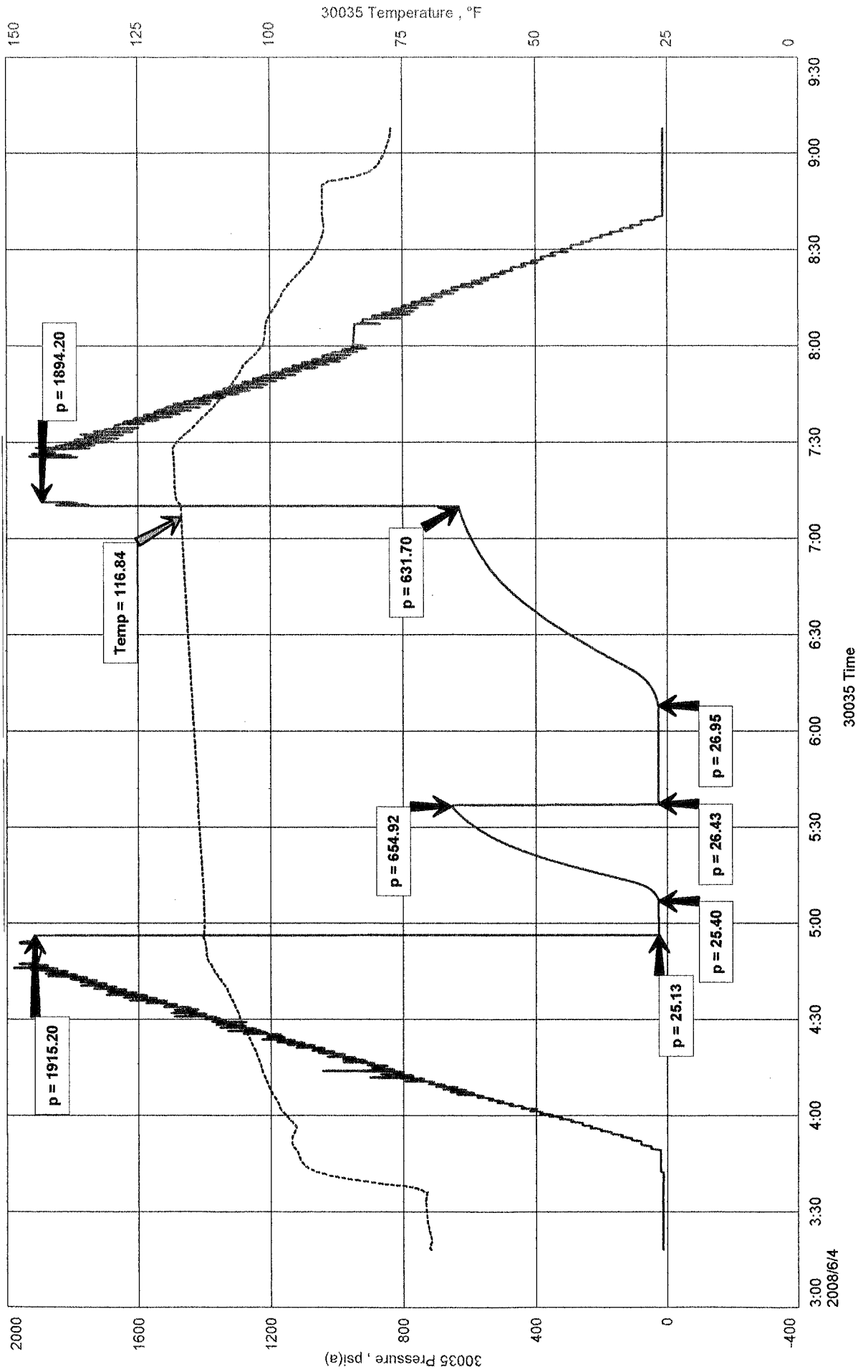
RECOVERED: 3' MUD 100% MUD WITH FEW OIL SPECS

TOOL SAMPLE: MUD WITH FEW OIL SPECS

MULL DRILLING CO.
 DST #2 LANSING "I" 3,960 - 4,000
 Start Test Date: 2008/06/04
 Final Test Date: 2008/06/04

THORNBERG TRUST #1-27
 Formation: DST #2 LANSING "I" 3,960 - 4,000
 Pool: WILDCAT

THORNBERG TRUST #1-27



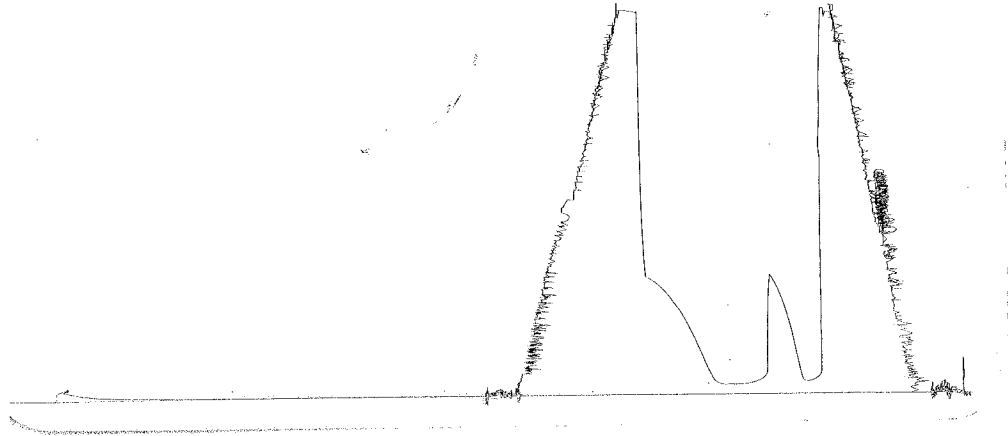
DST #2

Outside 13387

3960-4000

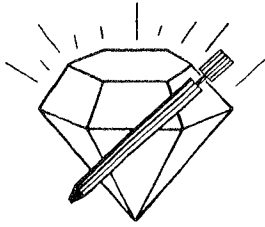
Lansing I

Loc. 3997



This is an actual photograph of recorder chart.

POINT	PRESSURE		Elec. Office Reading	PSI
	Field Reading			
(A) Initial Hydrostatic Mud	1915	1915		PSI
(B) First Initial Flow Pressure	25	25		PSI
(C) First Final Flow Pressure	25	25		PSI
(D) Initial Closed-in Pressure	655	655		PSI
(E) Second Initial Flow Pressure	26	26		PSI
(F) Second Final Flow Pressure	27	27		PSI
(G) Final Closed-in Pressure	632	632		PSI
(H) Final Hydrostatic Mud	1894	1894		PSI



DIAMOND TESTING
P.O. Box 157
HOISINGTON, KANSAS 67544
(620) 653-7550 • (800) 542-7313

Company Mull Drilling Company, Inc. Lease & Well No. Thornburg Trust No. 1-27
Elevation 2507 KB Formation Lansing "J" Effective Pay Ft. Ticket No. C 58
Date 6-04-08 Sec. 27 Twp. 15S Range 26W County Gove State Kansas
Test Approved By Kevin L. Kessler Diamond Representative Chris Redetzke

Formation Test No. 3 Interval Tested from 3,995 ft. to 4,025 ft. Total Depth 4,025 ft.
Packer Depth 3,990 ft. Size 6 3/4 in. Packer Depth ft. Size in.
Packer Depth 3,995 ft. Size 6 3/4 in. Packer Depth ft. Size in.
Depth of Selective Zone Set ft.

Top Recorder Depth (Inside) 3,998 ft. Recorder Number 30035 Cap. 5,000 psi
Bottom Recorder Depth (Outside) 4,022 ft. Recorder Number 13387 Cap. 4,000 psi
Below Straddle Recorder Depth ft. Recorder Number Cap. psi

Drilling Contractor Duke Drilling Co., Inc. - Rig 4 Drill Collar Length ft. I.D. in.
Mud Type Chemical Viscosity 60 Weight Pipe Length ft. I.D. in.
Weight 9.2 Water Loss 8.8 cc. Drill Pipe Length 3,975 ft. I.D. 3 1/2 in.
Chlorides 3,200 P.P.M. Test Tool Length 20 ft. Tool Size 3 1/2 - IF in.
Jars: Make Sterling Serial Number Not Run Anchor Length 30 ft. Size 4 1/2 - FH in.
Did Well Flow? No Reversed Out No Surface Choke Size 1 in. Bottom Choke Size 5/8 in.
Main Hole Size 7 7/8 in. Tool Joint Size 4 1/2 - XH in.

Blow: 1st Open: Fair, 1/2 in., blow increasing to 9 ins. No blow back during shut-in.
2nd Open: Strong, 1/2 in., blow increasing. Off bottom of bucket in 2 1/2 mins. No blow back during shut-in.

Recovered 732 ft. of gas in pipe
Recovered 40 ft. of free oil = .515200 bbls. (Gravity: 36@ 60°)
Recovered 20 ft. of heavy oil cut mud = .257600 bbls. (Grind out: 45%-mud; 55%-oil)
Recovered 60 ft. of TOTAL FLUID = .772800 bbls.
Recovered ft. of
Remarks Tool Sample Grind Out; 30%-mud; 70%-oil

Time Set Packer(s)	<u>5:03</u>	AM P.M.	Time Started Off Bottom	<u>8:43</u>	AM P.M.	Maximum Temperature	<u>123°</u>
Initial Hydrostatic Pressure			(A)	<u>1945</u>	P.S.I.		
Initial Flow Period	Minutes	<u>10</u>	(B)	<u>27</u>	P.S.I. to (C)	<u>29</u>	P.S.I.
Initial Closed In Period	Minutes	<u>30</u>	(D)	<u>897</u>	P.S.I.		
Final Flow Period	Minutes	<u>60</u>	(E)	<u>29</u>	P.S.I. to (F)	<u>46</u>	P.S.I.
Final Closed In Period	Minutes	<u>120</u>	(G)	<u>905</u>	P.S.I.		
Final Hydrostatic Pressure			(H)	<u>1948</u>	P.S.I.		

GENERAL INFORMATION

Client Information:

Company: MULL DRILLING CO.

Contact: ERNIE MORRISON

Phone: Fax: e-mail:

Site Information:

Contact: KEVIN KESSLER

Phone: Fax: e-mail:

Well Information:

Name: THORNBURG TRUST #1-27

Operator: MULL DRILLING CO.

Location-Downhole: DST #3 LANSING 'J' 3,995 - 4,025

Location-Surface: sec 27-15S-26W GOVE COUNTY

Test Information:

Company: DIAMOND TESTING

Representative: CHRIS

Supervisor: KEVIN KESSLER

Test Type: CONVENTIONAL Job Number:

Test Unit: NO. 1

Start Date: 2008/06/04 Start Time: 15:40:00

End Date: 2008/06/04 End Time: 22:28:00

Report Date: Prepared By:

Remarks: Qualified By:

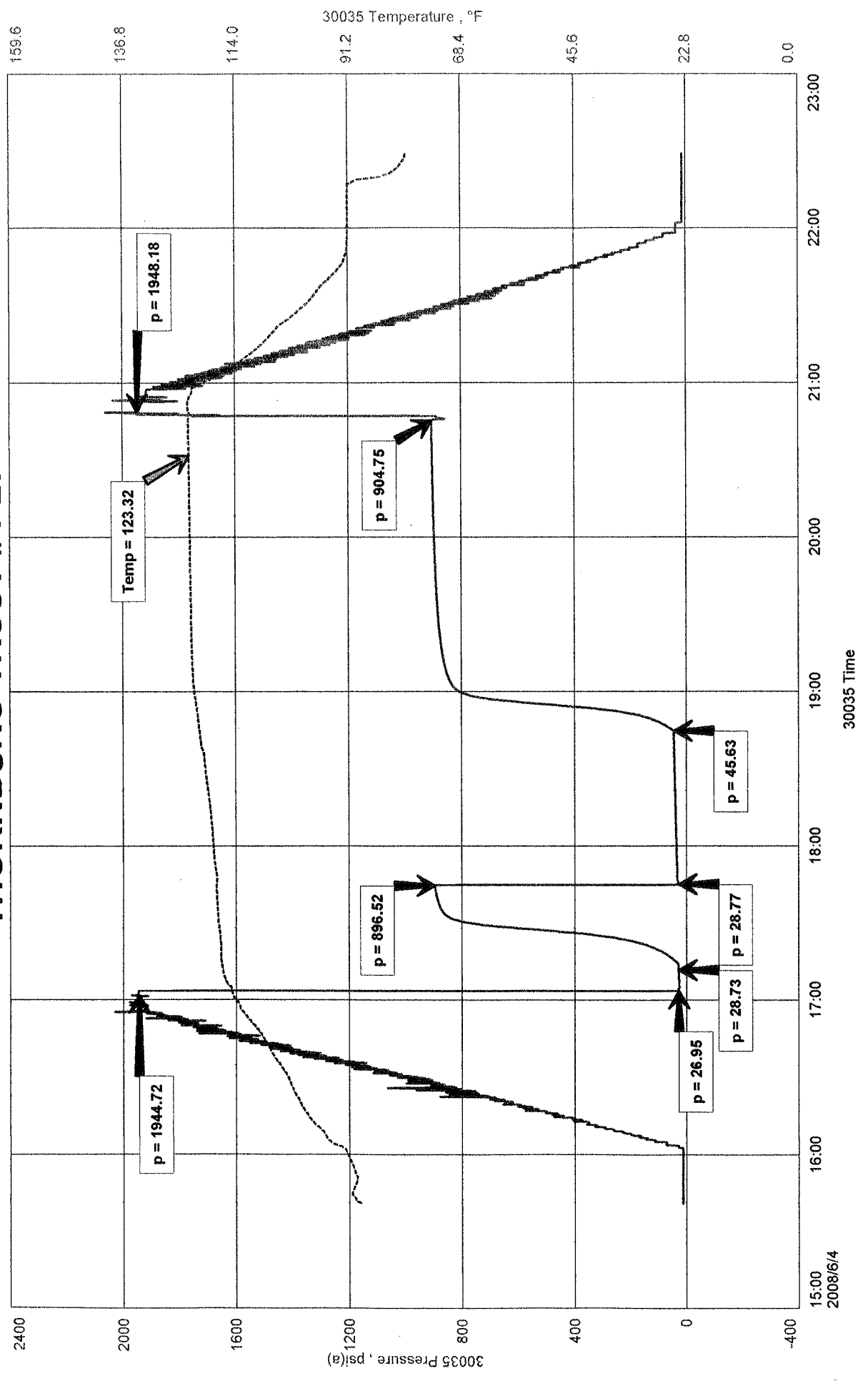
RECOVERED: 732' G.I.P.
40' FREE OIL GRAVITY: 36 @ 60 deg. F.
20' H.O.C.M. 45% MUD, 55% OIL
60' TOTAL FLUID

TOOL SAMPLE: 30% MUD, 70% OIL

MULL DRILLING CO.
 DST #3 LANSING 'J' 3,995 - 4,025
 Start Test Date: 2008/06/04
 Final Test Date: 2008/06/04

THORNBERG TRUST #1-27

THORNBERG TRUST #1-27
 Formation: DST #3 LANSING 'J' 3,995 - 4,025
 Pool: WILDCAT

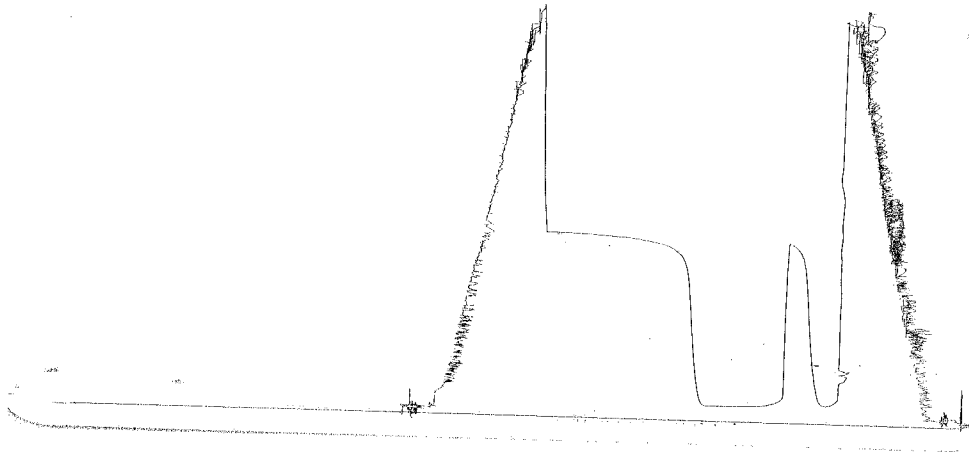


DST #3

Outside 13387 3995-4025

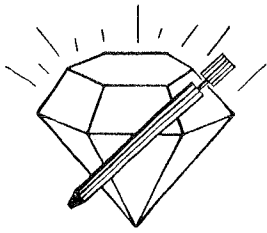
Lansing

Loc. 4022



This is an actual photograph of recorder chart.

POINT	PRESSURE		PSI
	Field Reading	Elec. Office Reading	
(A) Initial Hydrostatic Mud	1945	1945	PSI
(B) First Initial Flow Pressure.....	27	27	PSI
(C) First Final Flow Pressure	29	29	PSI
(D) Initial Closed-in Pressure	897	897	PSI
(E) Second Initial Flow Pressure	29	29	PSI
(F) Second Final Flow Pressure.....	46	46	PSI
(G) Final Closed-in Pressure.....	905	905	PSI
(H) Final Hydrostatic Mud	1948	1948	PSI



DIAMOND TESTING

P.O. Box 157
HOISINGTON, KANSAS 67544
(620) 653-7550 • (800) 542-7313

Company Mull Drilling Company, Inc. Lease & Well No. Thornburg Trust No. 1-27
Elevation 2507 KB Formation Lansing "K"- "L" Effective Pay -- Ft. Ticket No. C 59
Date 6-05-08 Sec. 27 Twp. 15S Range 26W County Gove State Kansas
Test Approved By Kevin L. Kessler Diamond Representative Chris Redetzke

Formation Test No. 4 Interval Tested from 4,020 ft. to 4,090 ft. Total Depth 4,090 ft.
Packer Depth 4,015 ft. Size 6 3/4 in. Packer Depth -- ft. Size -- in.
Packer Depth 4,020 ft. Size 6 3/4 in. Packer Depth -- ft. Size -- in.
Depth of Selective Zone Set ft.

Top Recorder Depth (Inside) 4,023 ft. Recorder Number 30035 Cap. 5,000 psi
Bottom Recorder Depth (Outside) 4,087 ft. Recorder Number 13387 Cap. 4,000 psi
Below Straddle Recorder Depth ft. Recorder Number Cap. psi

Drilling Contractor Duke Drilling Co., Inc. - Rig 4 Drill Collar Length -- ft. I.D. -- in.
Mud Type Chemical Viscosity 53 Weight Pipe Length -- ft. I.D. -- in.
Weight 9.2 Water Loss 9.2 cc. Drill Pipe Length 4,000 ft. I.D. 3 1/2 in.
Chlorides 3,500 P.P.M. Test Tool Length 20 ft. Tool Size 3 1/2 - IF in.
Jars: Make Sterling Serial Number Not Run Anchor Length 70 ft. Size 4 1/2 - FH in.
Did Well Flow? No Reversed Out No Surface Choke Size 1 in. Bottom Choke Size 5/8 in.
Main Hole Size 7 7/8 in. Tool Joint Size 4 1/2 - XH in.

Blow: 1st Open: Weak, 1/2 in., blow. No blow back during shut-in.
2nd Open: Very weak surface blow. No blow back during shut-in.

Recovered 3 ft. of mud = .038640 bbls. (Grind out: 100%-mud)
Recovered ft. of
Recovered ft. of
Recovered ft. of
Recovered ft. of

Remarks Tool Sample Grind Out: Mud with a few oil specks

Time Set Packer(s) 11:09 ~~P.M.~~ ^{A.M.} Time Started Off Bottom 1:19 ~~P.M.~~ ^{A.M.} Maximum Temperature 120°
Initial Hydrostatic Pressure (A) 1956 P.S.I.
Initial Flow Period Minutes 10 (B) 25 P.S.I. to (C) 27 P.S.I.
Initial Closed In Period Minutes 30 (D) 351 P.S.I.
Final Flow Period Minutes 30 (E) 27 P.S.I. to (F) 29 P.S.I.
Final Closed In Period Minutes 60 (G) 285 P.S.I.
Final Hydrostatic Pressure (H) 1945 P.S.I.

GENERAL INFORMATION

Client Information:

Company: MULL DRILLING CO.
Contact: ERNIE MORRISON
Phone: Fax: e-mail:

Site Information:

Contact: KEVIN KESSLER
Phone: Fax: e-mail:

Well Information:

Name: THORNBURG TRUST #1-27
Operator: MULL DRILLING CO.
Location-Downhole: DST #4 LANSING 'K,L' 4,020 - 4,090
Location-Surface: sec 27-15S-26W GOVE COUNTY

Test Information:

Company: DIAMOND TESTING
Representative: CHRIS
Supervisor: KEVIN KESSLER
Test Type: CONVENTIONAL Job Number:
Test Unit: NO. 1
Start Date: 2008/06/05 Start Time: 09:14:00
End Date: 2008/06/05 End Time: 14:59:00
Report Date: Prepared By:
Remarks: Qualified By:

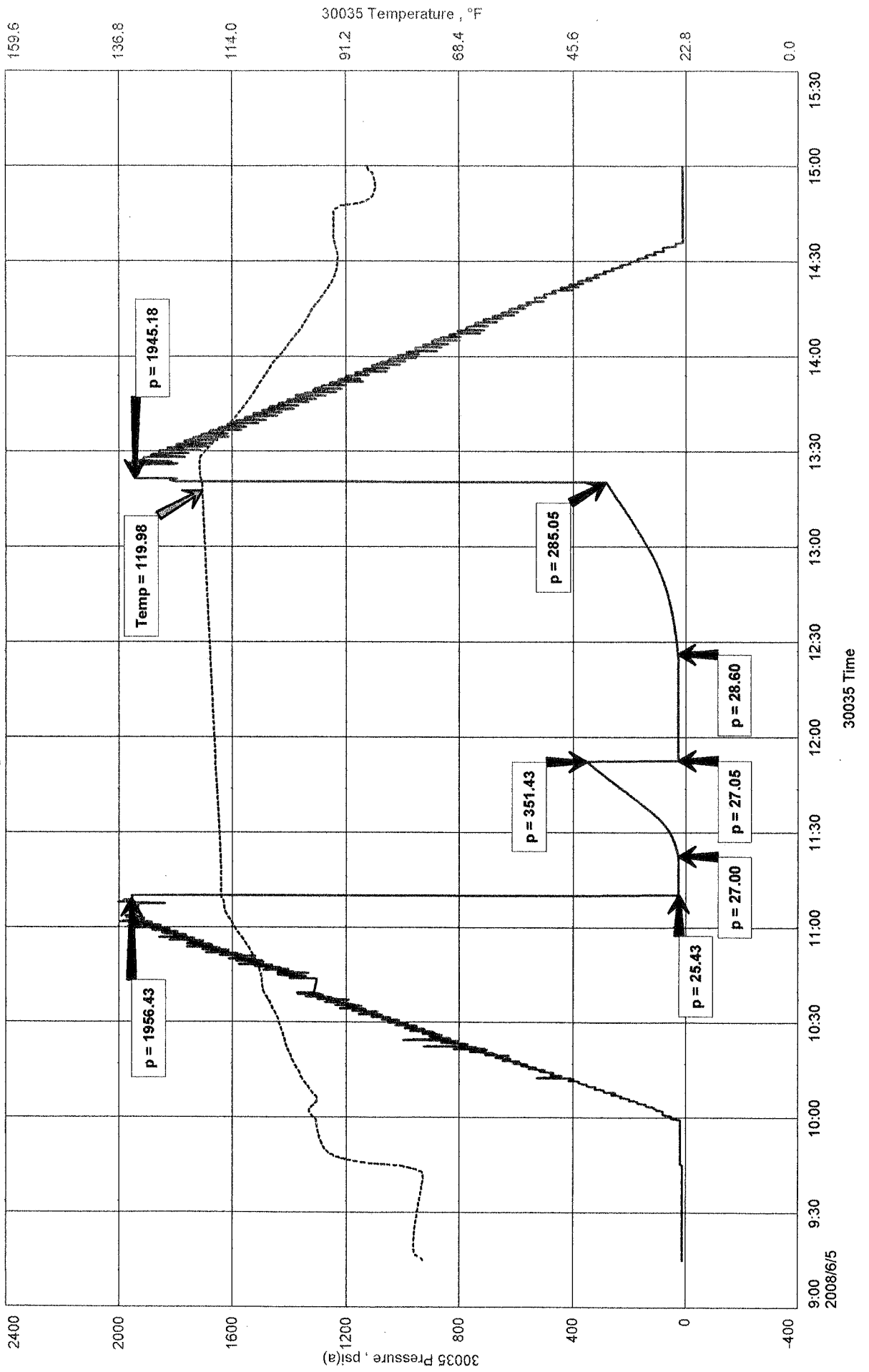
RECOVERED: 3' MUD 100% MUD
TOOL SAMPLE: MUD WITH FEW OIL SPECS



MULL DRILLING CO.
 THORNBERG TRUST #1-27
 Formation: DST #4 LANSING 'K,L' 4,020 - 4,090
 Pool: WILDCAT

Start Test Date: 2008/06/05
 Final Test Date: 2008/06/05

THORNBERG TRUST #1-27

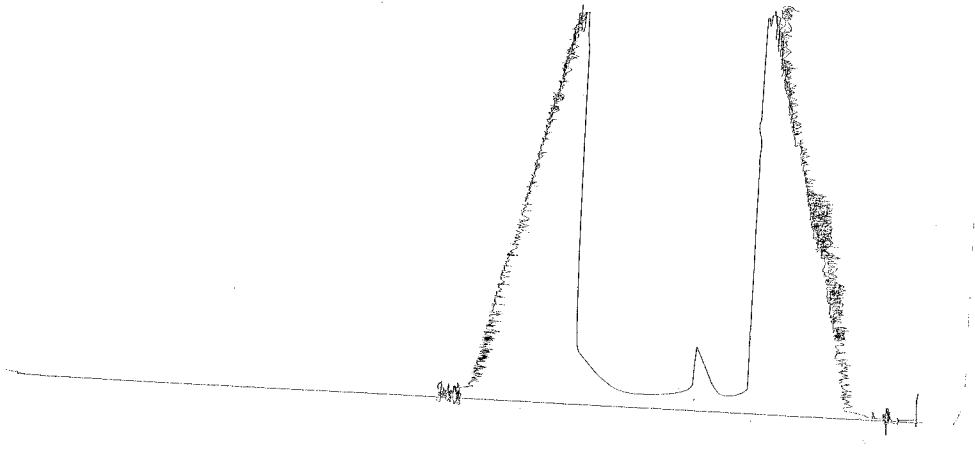


PST #4

Outside 13387 4020-4090

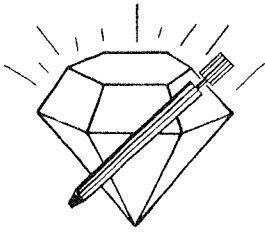
Lansing 'K,L'

LOC 4087



This is an actual photograph of recorder chart.

POINT	PRESSURE		PSI
	Field Reading	Elec. Office Reading	
(A) Initial Hydrostatic Mud	1956	1956	PSI
(B) First Initial Flow Pressure	25	25	PSI
(C) First Final Flow Pressure	27	27	PSI
(D) Initial Closed-in Pressure	351	351	PSI
(E) Second Initial Flow Pressure	27	27	PSI
(F) Second Final Flow Pressure	29	29	PSI
(G) Final Closed-in Pressure	285	285	PSI
(H) Final Hydrostatic Mud	1945	1945	PSI



DIAMOND TESTING

P.O. Box 157
HOISINGTON, KANSAS 67544
(620) 653-7550 • (800) 542-7313

Company Mull Drilling Company, Inc. Lease & Well No. Thornburg Trust No. 1-27
Elevation 2507 KB Formation Ft. Scott Effective Pay Ft. Ticket No. C 60
Date 6-06-08 Sec. 27 Twp. 15S Range 26W County Gove State Kansas
Test Approved By Kevin L. Kessler Diamond Representative Chris Redetzke

Formation Test No. 5 Interval Tested from 4,270 ft. to 4,320 ft. Total Depth 4,320 ft.
Packer Depth 4,265 ft. Size 6 3/4 in. Packer Depth ft. Size in.
Packer Depth 4,270 ft. Size 6 3/4 in. Packer Depth ft. Size in.
Depth of Selective Zone Set ft.

Top Recorder Depth (Inside) 4,273 ft. Recorder Number 30035 Cap. 5,000 psi
Bottom Recorder Depth (Outside) 4,317 ft. Recorder Number 13387 Cap. 4,000 psi
Below Straddle Recorder Depth ft. Recorder Number Cap. psi

Drilling Contractor Duke Drilling Co., Inc. - Rig 4 Drill Collar Length ft. I.D. in.
Mud Type Chemical Viscosity 44 Weight Pipe Length ft. I.D. in.
Weight 9.1 Water Loss 9.5 cc. Drill Pipe Length 4,250 ft. I.D. 3 1/2 in.
Chlorides 3,300 P.P.M. Test Tool Length 20 ft. Tool Size 3 1/2 - IF in.
Jars: Make Sterling Serial Number Not Run Anchor Length 50 ft. Size 4 1/2 - FH in.
Did Well Flow? No Reversed Out No Surface Choke Size 1 in. Bottom Choke Size 5/8 in.
Main Hole Size 7 7/8 in. Tool Joint Size 4 1/2 - XH in.

Blow: 1st Open: Weak, 1/2 in., blow. No blow back during shut-in.
2nd Open: Very weak surface blow. No blow back during shut-in.

Recovered 5 ft. of mud = .064400 bbls. (Grind out: 100%-mud with oil specks)

Recovered ft. of

Recovered ft. of

Recovered ft. of

Recovered ft. of

Remarks Tool Sample Grind Out: Mud with a scum of oil

Time Set Packer(s) 1:55 ~~XXX~~ P.M. Time Started Off Bottom 4:05 ~~XXX~~ P.M. Maximum Temperature 124°
Initial Hydrostatic Pressure (A) 2091 P.S.I.
Initial Flow Period Minutes 10 (B) 26 P.S.I. to (C) 32 P.S.I.
Initial Closed In Period Minutes 30 (D) 644 P.S.I.
Final Flow Period Minutes 30 (E) 28 P.S.I. to (F) 29 P.S.I.
Final Closed In Period Minutes 60 (G) 166 P.S.I.
Final Hydrostatic Pressure (H) 2098 P.S.I.

GENERAL INFORMATION

Client Information:

Company: MULL DRILLING CO.
Contact: ERNIE MORRISON
Phone: Fax: e-mail:

Site Information:

Contact: KEVIN KESSLER
Phone: Fax: e-mail:

Well Information:

Name: THORNBURG TRUST #1-27
Operator: MULL DRILLING CO.
Location-Downhole: DST #5 FT. SCOTT 4,270 - 4,320
Location-Surface: sec 27-15S-26W GOVE COUNTY

Test Information:

Company: DIAMOND TESTING
Representative: CHRIS
Supervisor: KEVIN KESSLER
Test Type: CONVENTIONAL
Test Unit: NO. 1
Start Date: 2008/06/06
End Date: 2008/06/06
Report Date:
Job Number:
Start Time: 12:20:00
End Time: 17:51:00
Prepared By:
Qualified By:

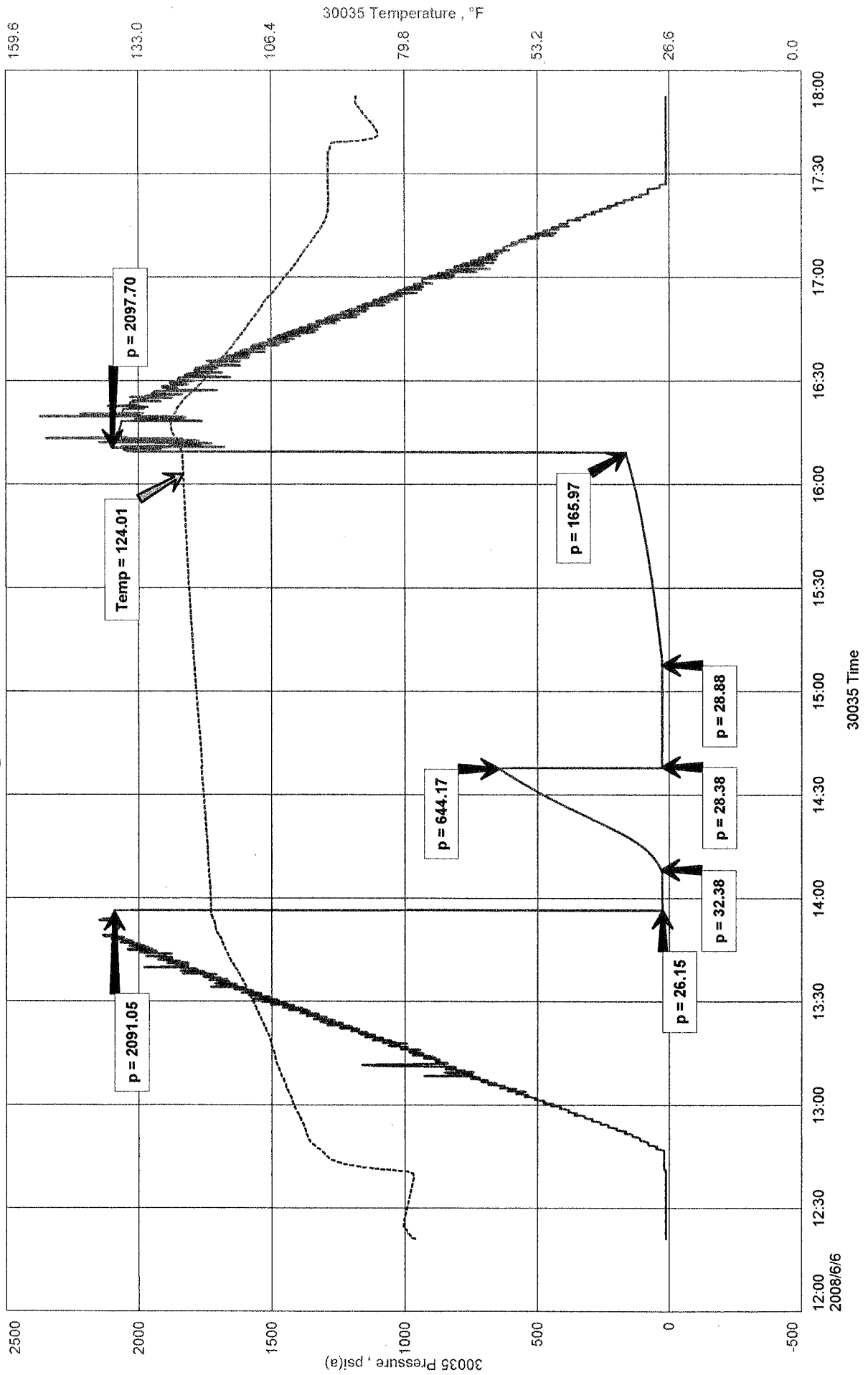
Remarks:

RECOVERED: 5' MUD 100% MUD WITH OIL SPECS
TOOL SAMPLE: MUD WITH A SCUM OF OIL

MULL DRILLING CO.
 DST #5 FT. SCOTT 4,270 - 4,320
 Start Test Date: 2008/06/06
 Final Test Date: 2008/06/06

THORNBERG TRUST #1-27
 Formation: DST #5 FT. SCOTT 4,270 - 4,320
 Pool: WILDCAT

THORNBERG TRUST #1-27

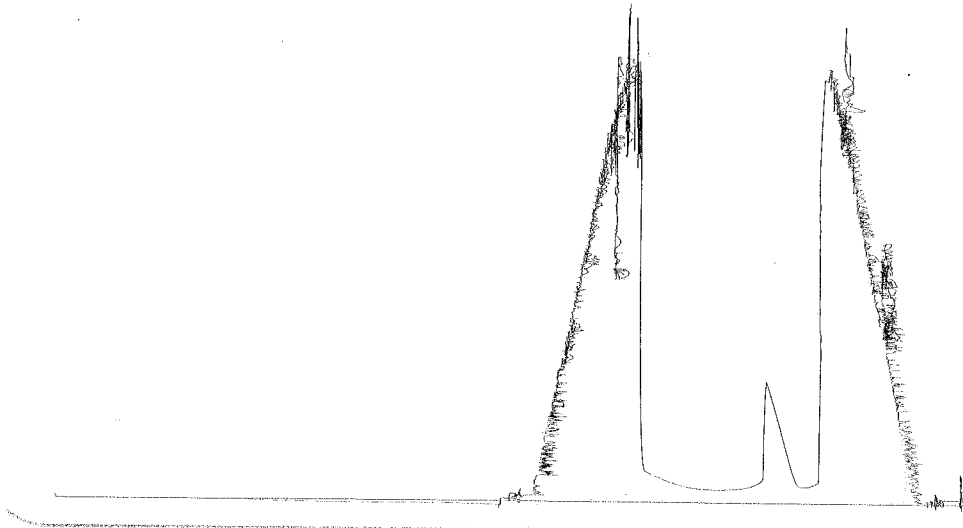


DST #5

Outside 13387 4270-4370

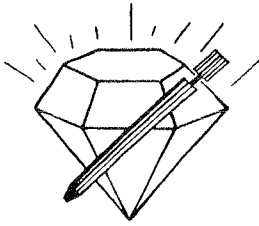
Fr. Scott

Loc. 4317



This is an actual photograph of recorder chart.

POINT	PRESSURE		Elec. Office Reading	PSI
	Field Reading			
(A) Initial Hydrostatic Mud	2091	2091		PSI
(B) First Initial Flow Pressure	26	26		PSI
(C) First Final Flow Pressure	32	32		PSI
(D) Initial Closed-in Pressure	644	644		PSI
(E) Second Initial Flow Pressure	28	28		PSI
(F) Second Final Flow Pressure	29	29		PSI
(G) Final Closed-in Pressure	166	166		PSI
(H) Final Hydrostatic Mud	2098	2098		PSI



DIAMOND TESTING

P.O. Box 157

HOISINGTON, KANSAS 67544

(620) 653-7550 • (800) 542-7313

Company Mull Drilling Company, Inc. Lease & Well No. Thornburg Trust No. 1-27
 Elevation 2507 KB Formation Mississippi Effective Pay -- Ft. Ticket No. C 61
 Date 6-07-08 Sec. 27 Twp. 15S Range 26W County Gove State Kansas
 Test Approved By Kevin L. Kessler Diamond Representative Chris Redetzke

Formation Test No. 6 Interval Tested from 4,399 ft. to 4,414 ft. Total Depth 4,414 ft.
 Packer Depth 4,394 ft. Size 6 3/4 in. Packer Depth -- ft. Size -- in.
 Packer Depth 4,399 ft. Size 6 3/4 in. Packer Depth -- ft. Size -- in.

Depth of Selective Zone Set ft.
 Top Recorder Depth (Inside) 4,402 ft. Recorder Number 30035 Cap. 5,000 psi
 Bottom Recorder Depth (Outside) 4,411 ft. Recorder Number 13387 Cap. 4,000 psi
 Below Straddle Recorder Depth ft. Recorder Number Cap. psi

Drilling Contractor Duke Drilling Co., Inc. - Rig 4 Drill Collar Length -- ft. I.D. -- in.
 Mud Type Chemical Viscosity 44 Weight Pipe Length -- ft. I.D. -- in.
 Weight 9.1 Water Loss 9.5 cc. Drill Pipe Length 4,379 ft. I.D. 3 1/2 in.
 Chlorides 3,300 P.P.M. Test Tool Length 20 ft. Tool Size 3 1/2 - IF in.
 Jars: Make Sterling Serial Number Not Run Anchor Length 15 ft. Size 4 1/2 - FH in.
 Did Well Flow? No Reversed Out No Surface Choke Size 1 in. Bottom Choke Size 5/8 in.
 Main Hole Size 7 7/8 in. Tool Joint Size 4 1/2 - XH in.

Blow: 1st Open: Fair, 1/4 in., blow increasing to 2 1/2 ins. No blow back during shut-in.
 2nd Open: Fair, 1/4 in., blow increasing. Off bottom of bucket in 55 mins. Very weak surface blow back during shut-in.

Recovered 120 ft. of gas in pipe
 Recovered 95 ft. of free oil = 1.223600 bbls. (Gravity: 40 @ 60°)
 Recovered 20 ft. of heavy oil cut mud = .257600 bbls. (Grind out: 53%-oil; 47%-mud)
 Recovered 10 ft. of slightly oil cut watery mud = .128800 bbls. (Grind out: 3%-oil; 7%-water; 90%-mud)
 Recovered 125 ft. of TOTAL FLUID = 1.610000 bbls. Chlorides: 27,000 Ppm
 Remarks Tool Sample Grind Out: 15%-mud; 85%-oil

Time Set Packer(s) 6:08 ~~P.M.~~ ^{A.M.} Time Started Off Bottom 9:48 ~~P.M.~~ ^{A.M.} Maximum Temperature 134°
 Initial Hydrostatic Pressure (A) 2164 P.S.I.
 Initial Flow Period Minutes 10 (B) 28 P.S.I. to (C) 33 P.S.I.
 Initial Closed In Period Minutes 30 (D) 1157 P.S.I.
 Final Flow Period Minutes 60 (E) 32 P.S.I. to (F) 58 P.S.I.
 Final Closed In Period Minutes 120 (G) 1185 P.S.I.
 Final Hydrostatic Pressure (H) 2159 P.S.I.

GENERAL INFORMATION

Client Information:

Company: MULL DRILLING CO.
Contact: ERNIE MORRISON
Phone: Fax: e-mail:

Site Information:

Contact: KEVIN KESSLER
Phone: Fax: e-mail:

Well Information:

Name: THORNBURG TRUST #1-27
Operator: MULL DRILLING CO.
Location-Downhole: DST #6 MISSISSIPPI 4,399 - 4,414
Location-Surface: sec 27-15S-26W GOVE COUNTY

Test Information:

Company: DIAMOND TESTING
Representative: CHRIS
Supervisor: KEVIN KESSLER
Test Type: CONVENTIONAL Job Number:
Test Unit: NO. 1
Start Date: 2008/06/07 Start Time: 04:15:00
End Date: 2008/06/07 End Time: 11:51:00
Report Date: Prepared By:
Qualified By:

Remarks:

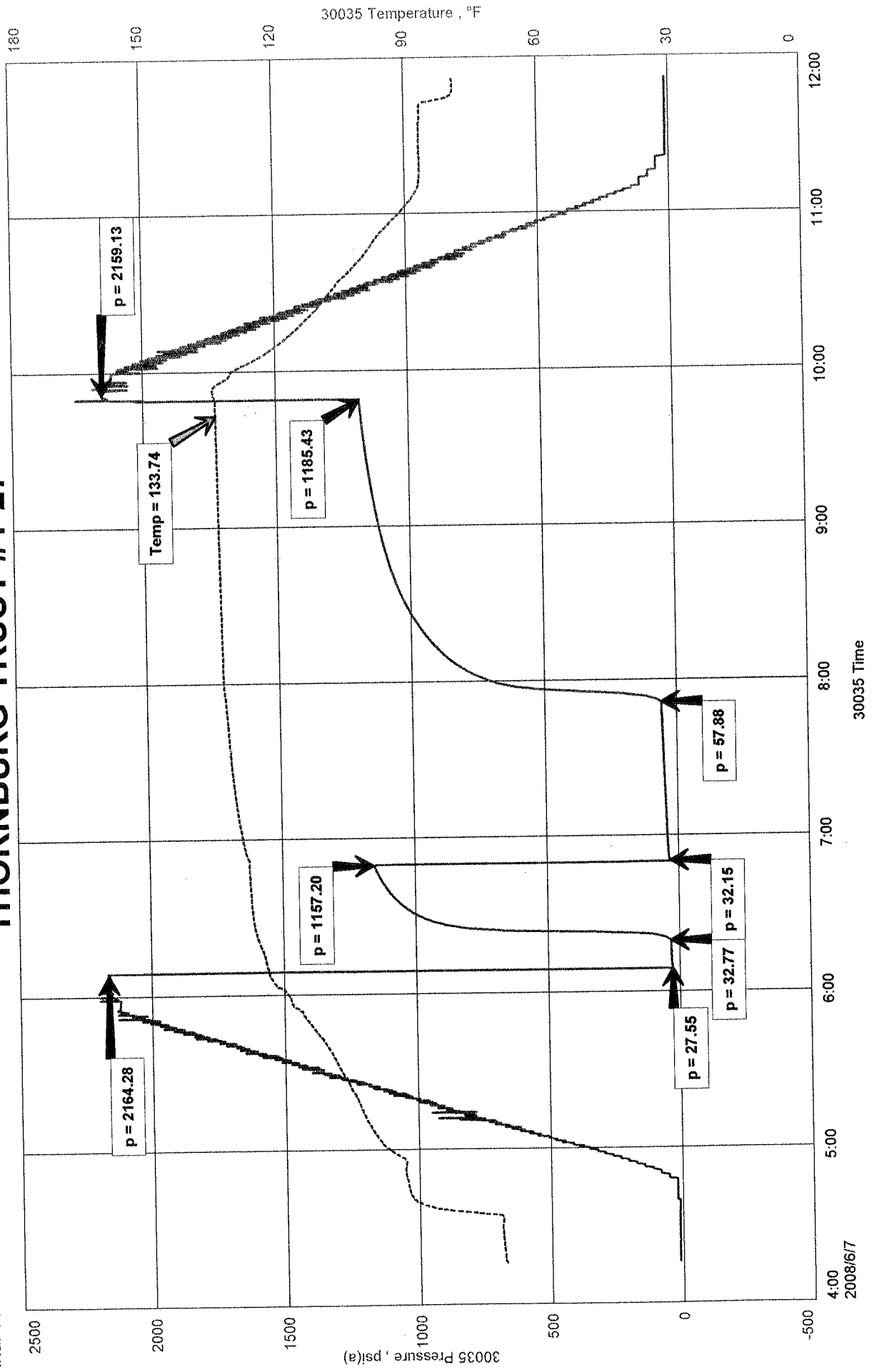
RECOVERED: 120' G.I.P.
95' FREE OIL GRAVITY: 40 @ 60 deg. F.
20' H.O.C.M. 53% OIL, 47% MUD
10' S.O.C.W.M. 3% OIL, 7% WTR, 90% MUD CHLORIDES: 27,000 ppm
125' TOTAL FLUID

TOOL SAMPLE: 15%MUD, 85% OIL

THORNBERG TRUST #1-27
 Formation: DST #6 MISSISSIPPI 4,399 - 4,414
 Pool: WILDCAT

MULL DRILLING CO.
 DST #6 MISSISSIPPI 4,399 - 4,414
 Start Test Date: 2008/06/07
 Final Test Date: 2008/06/07

THORNBERG TRUST #1-27



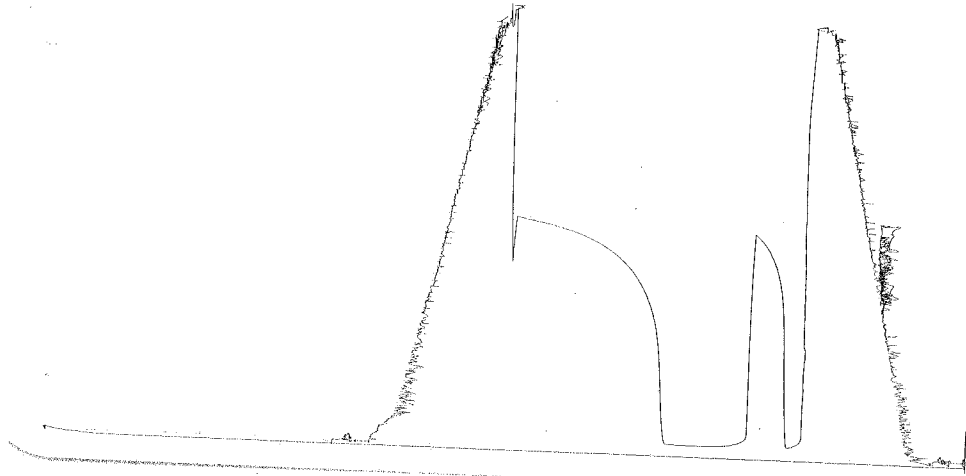
DST # 6

Outside 13387

4399-4414

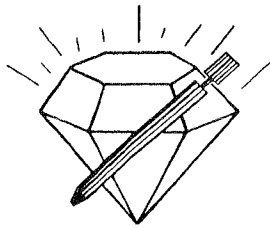
Mississippi

Loc. 4411



This is an actual photograph of recorder chart.

POINT	PRESSURE		Elec. Office Reading	PSI
	Field Reading			
(A) Initial Hydrostatic Mud	2164	2164		PSI
(B) First Initial Flow Pressure	28	28		PSI
(C) First Final Flow Pressure	33	33		PSI
(D) Initial Closed-in Pressure	1157	1157		PSI
(E) Second Initial Flow Pressure	32	32		PSI
(F) Second Final Flow Pressure	58	58		PSI
(G) Final Closed-in Pressure	1185	1185		PSI
(H) Final Hydrostatic Mud	2159	2159		PSI



DIAMOND TESTING
P.O. Box 157
HOISINGTON, KANSAS 67544
(620) 653-7550 • (800) 542-7313

Company Mull Drilling Company, Inc. Lease & Well No. Thornburg Trust No. 1-27
Elevation 2507 KB Formation Mississippi Effective Pay Ft. Ticket No. C 62
Date 6-07-08 Sec. 27 Twp. 15S Range 26W County Gove State Kansas
Test Approved By Kevin L. Kessler Diamond Representative Chris Redetzke

Formation Test No. 7 Interval Tested from 4,410 ft. to 4,422 ft. Total Depth 4,422 ft.
Packer Depth 4,405 ft. Size 6 3/4 in. Packer Depth ft. Size in.
Packer Depth 4,410 ft. Size 6 3/4 in. Packer Depth ft. Size in.
Depth of Selective Zone Set ft.

Top Recorder Depth (Inside) 4,400 ft. Recorder Number 30035 Cap. 5,000 psi
Bottom Recorder Depth (Outside) 4,419 ft. Recorder Number 13387 Cap. 4,000 psi
Below Straddle Recorder Depth ft. Recorder Number Cap. psi

Drilling Contractor Duke Drilling Co., Inc. - Rig 4 Drill Collar Length ft. I.D. in.
Mud Type Chemical Viscosity 67 Weight Pipe Length ft. I.D. in.
Weight 9.3 Water Loss 9.6 cc. Drill Pipe Length 4,386 ft. I.D. 3 1/2 in.
Chlorides 4,400 P.P.M. Test Tool Length 24 ft. Tool Size 3 1/2 - IF in.
Jars: Make Sterling Serial Number Not Run Anchor Length 12 ft. Size 4 1/2 - FH in.
Did Well Flow? No Reversed Out No Surface Choke Size 1 in. Bottom Choke Size 5/8 in.
Main Hole Size 7 7/8 in. Tool Joint Size 4 1/2 - XH in.

Blow: 1st Open: Weak, 1/2 in., blow increasing to 1/2 in. No blow back during shut-in.
2nd Open: Weak, 1/2 in., blow. No blow back during shut-in.

Recovered 10 ft. of free oil = .128800 bbls. (Gravity: 40.4 @ 60°)
Recovered 10 ft. of slightly oil cut watery mud = .128800 bbls. (Grind out: 2%-oil; 15%-water; 83%-mud)
Recovered 20 ft. of TOTAL FLUID = .257600 bbls. Chlorides: 29,000 Ppm
Recovered ft. of
Recovered ft. of
Remarks Tool Sample Grind Out: 10%-mud; 90%-oil

Time Set Packer(s) 7:55 ~~XXX~~ P.M. Time Started Off Bottom 10:05 ~~XXX~~ P.M. Maximum Temperature 126°
Initial Hydrostatic Pressure (A) 2173 P.S.I.
Initial Flow Period Minutes 10 (B) 21 P.S.I. to (C) 25 P.S.I.
Initial Closed In Period Minutes 30 (D) 1227 P.S.I.
Final Flow Period Minutes 30 (E) 25 P.S.I. to (F) 31 P.S.I.
Final Closed In Period Minutes 60 (G) 1176 P.S.I.
Final Hydrostatic Pressure (H) 2164 P.S.I.

GENERAL INFORMATION

Client Information:

Company: MULL DRILLING CO.
Contact: ERNIE MORRISON
Phone: Fax: e-mail:

Site Information:

Contact: KEVIN KESSLER
Phone: Fax: e-mail:

Well Information:

Name: THORNBURG TRUST #1-27
Operator: MULL DRILLING CO.
Location-Downhole: DST #7 MISSISSIPPI 4,410 - 4,422
Location-Surface: sec 27-15S-26W GOVE COUNTY

Test Information:

Company: DIAMOND TESTING
Representative: CHRIS
Supervisor: KEVIN KESSLER
Test Type: CONVENTIONAL Job Number:
Test Unit: NO. 1
Start Date: 2008/06/07 Start Time: 17:55:00
End Date: 2008/06/07 End Time: 00:03:00
Report Date: Prepared By:
Remarks: Qualified By:

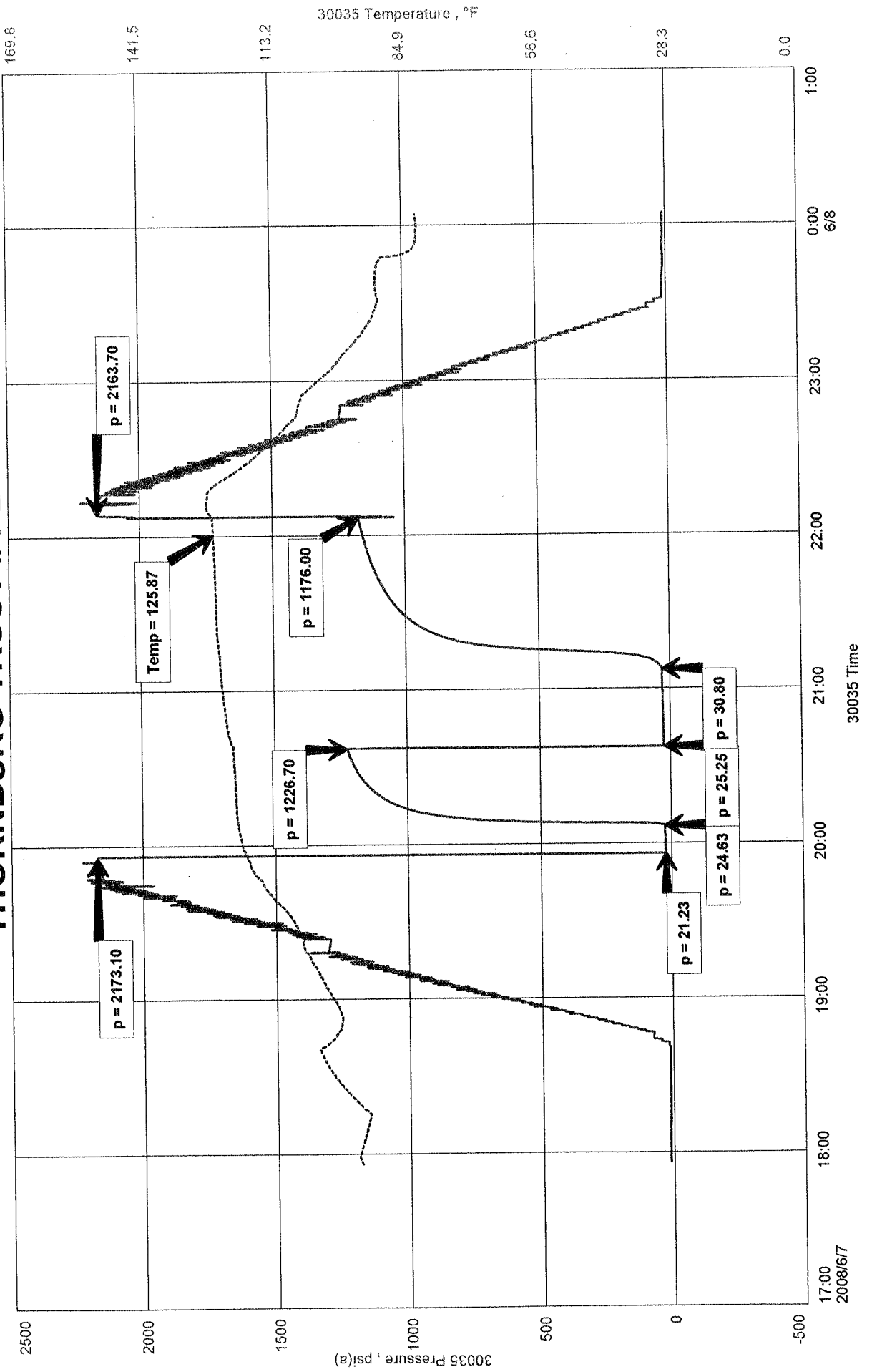
RECOVERED: 10' FREE OIL GRAVITY: 40.4 @ 60 deg. F.
10' S.O.C.W.M. 2% OIL, 15% WTR, 83% MUD CHLORIDES: 29,000 ppm
20' TOTAL FLUID

TOOL SAMPLE: 10% MUD, 90% OIL

THORNBERG TRUST #1-27
 Formation: DST #7 MISSISSIPPI 4,410 - 4,422
 Pool: WILDCAT

MULL DRILLING CO.
 DST #7 MISSISSIPPI 4,410 - 4,422
 Start Test Date: 2008/06/07
 Final Test Date: 2008/06/07

THORNBERG TRUST #1-27

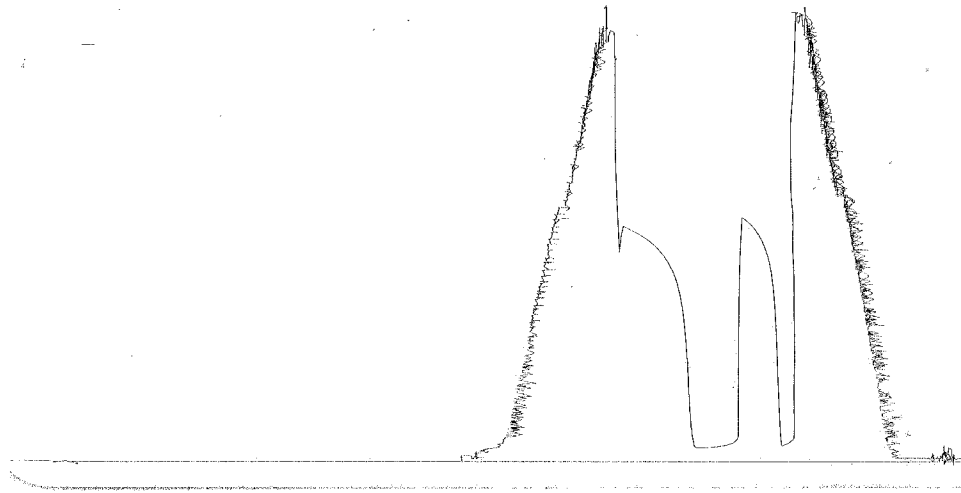


DST # 7
Mississippi

Outside 13387

4410-4422

Loc. 4419



This is an actual photograph of recorder chart.

POINT	PRESSURE		
	Field Reading	Elec. Office Reading	
(A) Initial Hydrostatic Mud	2173	2173	PSI
(B) First Initial Flow Pressure	21	21	PSI
(C) First Final Flow Pressure	25	25	PSI
(D) Initial Closed-in Pressure	1227	1227	PSI
(E) Second Initial Flow Pressure	25	25	PSI
(F) Second Final Flow Pressure	31	31	PSI
(G) Final Closed-in Pressure	1176	1176	PSI
(H) Final Hydrostatic Mud	2164	2164	PSI