

15-063-21678

31-15s-26w

Sect. is 31, not 13 as listed
ON DSTs.

DIAMOND TESTING

P.O. Box 157
HOISINGTON, KANSAS 67544
(620) 653-7550 • (800) 542-7313
STC 30034.D342

Company Mull Drilling Co., Inc. Lease & Well No. Curtis "B" No. 1-31

Elevation 2544KB Formation Toronto Effective Pay -- Ft. Ticket No. J2145

Date 10-17-07 Sec. 31 Twp. 13 Range 15S County Gove State Kansas

Test Approved By Kevin Kessler Diamond Representative John C. Riedl

Formation Test No. 1 Interval Tested from 3,770 ft. to 3,810 ft. Total Depth 3,810 ft.

Packer Depth 3,765 ft. Size 6 3/4 in. Packer Depth -- ft. Size -- in.

Packer Depth 3,770 ft. Size 6 3/4 in. Packer Depth -- ft. Size -- in.

Depth of Selective Zone Set ft.

Top Recorder Depth (Inside) 3,773 ft. Recorder Number 30044 Cap. 5,000 psi

Bottom Recorder Depth (Outside) 3,807 ft. Recorder Number 11073 Cap. 4,000 psi

Below Straddle Recorder Depth ft. Recorder Number Cap. psi

Drilling Contractor Duke Drilling Co., Inc. - Rig 4 Drill Collar Length -- ft. I.D. -- in.

Mud Type Chemical Viscosity 43 Weight Pipe Length -- ft. I.D. -- in.

Weight 8.7 Water Loss 8.2 cc. Drill Pipe Length 3,750 ft. I.D. 3 1/2 in.

Chlorides 2,200 P.P.M. Test Tool Length 20 ft. Tool Size 3 1/2 - IF in.

Jars: Make Bowen Serial Number Not Run Anchor Length 40 ft. Size 4 1/2 - FH in.

Did Well Flow? No Reversed Out No Surface Choke Size 1 in. Bottom Choke Size 5/8 in.

Main Hole Size 7 7/8 in. Tool Joint Size 4 1/2 - XH in.

Blow: 1st Open: Weak blow. Slow build to 2 1/2 ins. No blow back during shut-in.

2nd Open: Strong blow. Slow build to 8 ins. No blow back during shut-in.

Recovered 70 ft. of gas & oil cut watery mud = .994000 bbls. (Grind out: 10%-gas; 20%-oil; 25%-water; 45%-mud)

Recovered 120 ft. of slightly oil cut watery mud = 1.704000 bbls. (Grind out: 3%-oil; 45%-water; 52%-mud)

Recovered 190 ft. of TOTAL FLUID = 2.698000 bbls. Chlorides: 32,000 Ppm

Recovered ft. of

Recovered ft. of

Remarks

Time Set Packer(s) 10:00 ~~P.M.~~ ^{AM.} Time Started Off Bottom 1:40 ~~P.M.~~ ^{A.M.} Maximum Temperature 115°

Initial Hydrostatic Pressure (A) 1746 P.S.I.

Initial Flow Period Minutes 10 (B) 1 P.S.I. to (C) 17 P.S.I.

Initial Closed In Period Minutes 30 (D) 1151 P.S.I.

Final Flow Period Minutes 60 (E) 19 P.S.I. to (F) 82 P.S.I.

Final Closed In Period Minutes 120 (G) 1140 P.S.I.

Final Hydrostatic Pressure (H) 1715 P.S.I.

GENERAL INFORMATION

Client Information:

Company: MULL DRILLING CO INC

Contact: ERNIE MORRISON

Phone: Fax: e-mail:

Site Information:

Contact: KEVIN KESSLER

Phone: Fax: e-mail:

Well Information:

Name: CURTIS 1-31 "B"

Operator: MULL DRILLING CO INC

Location-Downhole: DST#1 3770 TO 3810

Location-Surface: S13/15S/26W GOVE COUNTY

Test Information:

Company: DIAMOND TESTING

Representative: JOHN RIEDL

Supervisor: KEVIN KESSLER

Test Type: CONVENTIONAL

Test Unit: 2

Start Date: 2007/10/17

End Date: 2007/10/18

Report Date: 2007/10/18

Job Number: D342

Start Time: 20:25:00

End Time: 04:00:00

Prepared By: JOHN RIEDL

Qualified By: KEVIN KESSLER

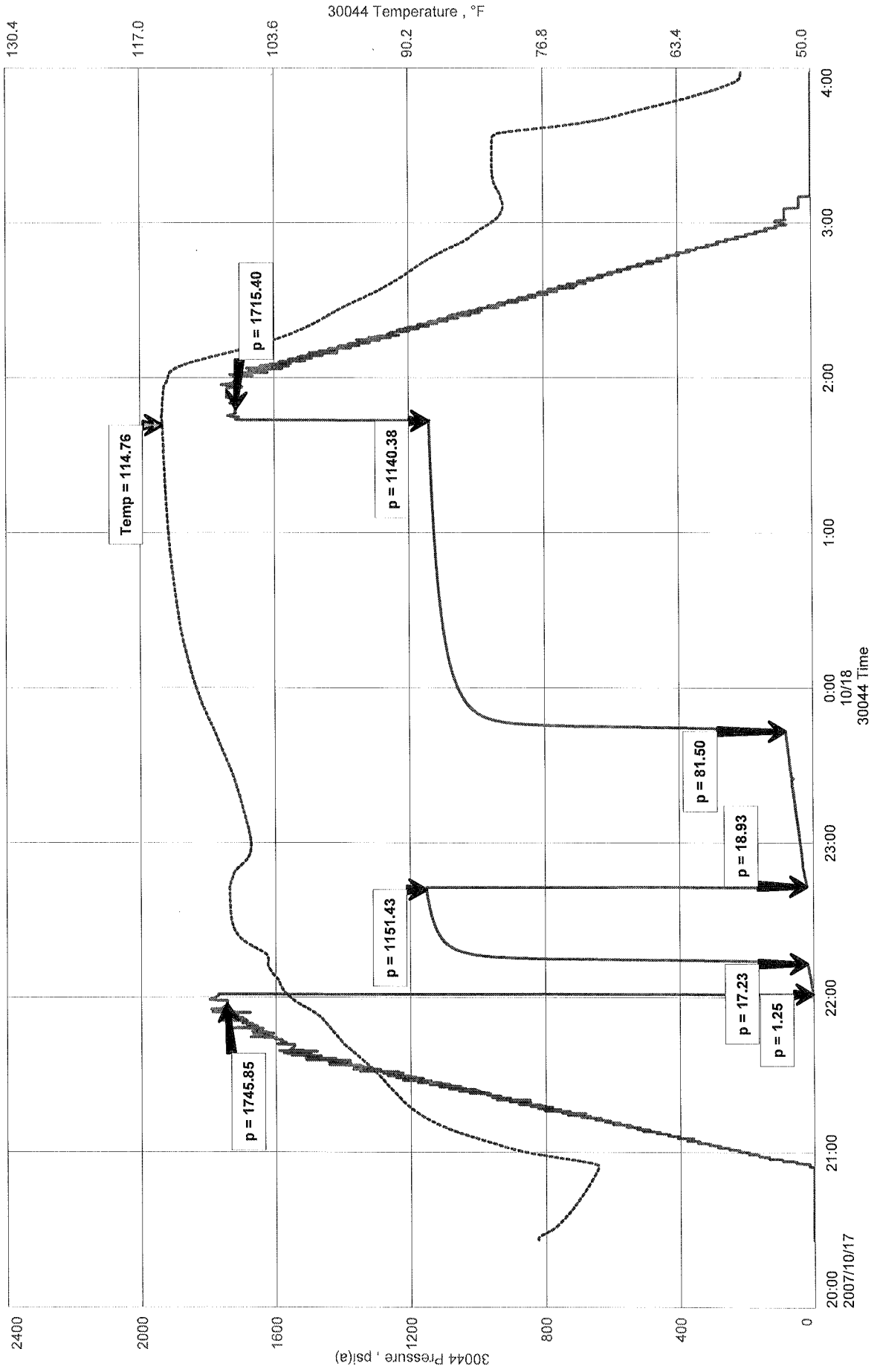
Remarks:

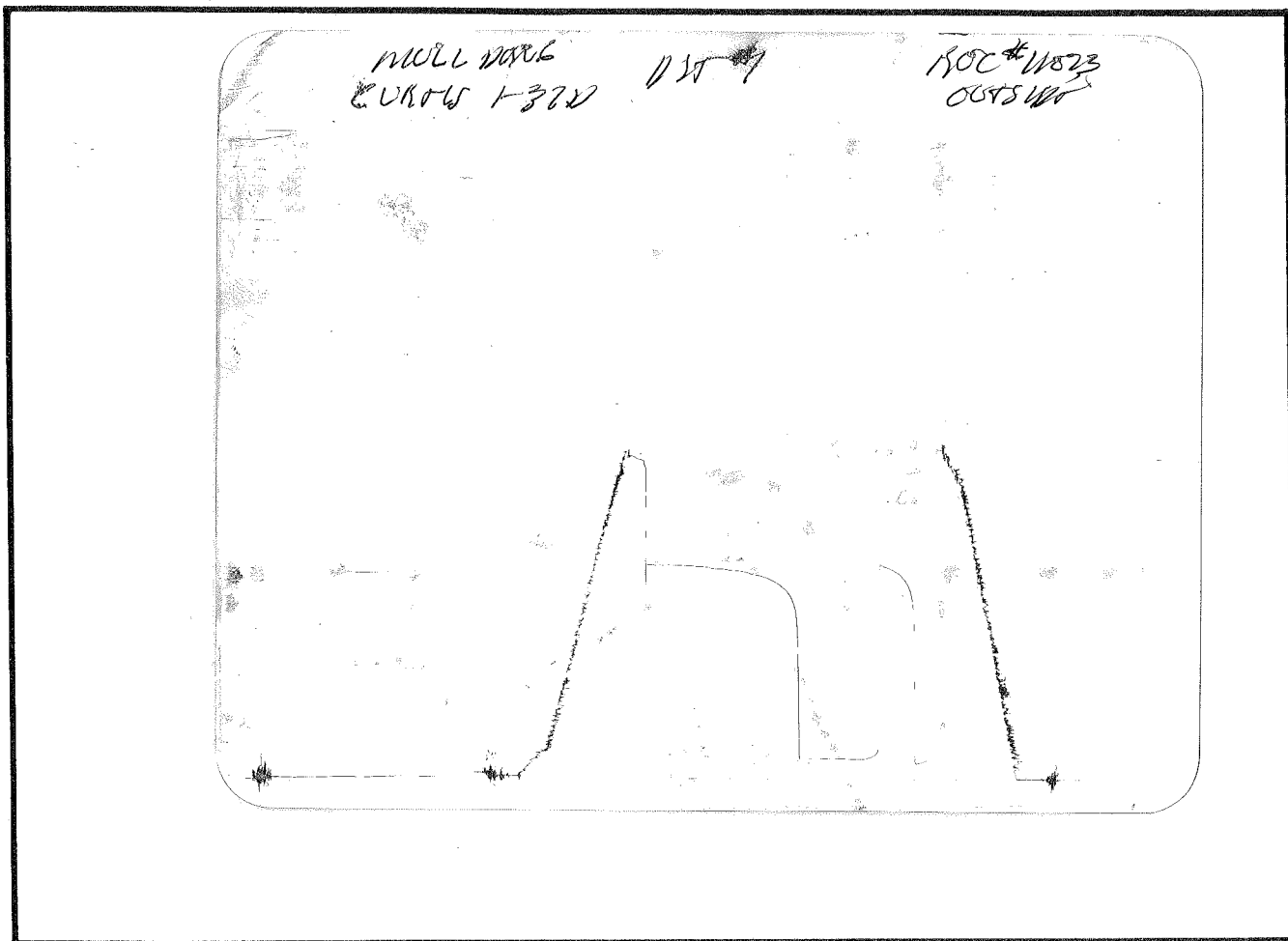
RECOVERY: 70 'OIL+GAS CUT WATERY MUD
120' SL OIL CUT WATERY MUD

MULL DRILLING CO INC
DST#1 3770 TO 3810
Start Test Date: 2007/10/17
Final Test Date: 2007/10/18

CURTIS 1-31 "B"
Formation: TORONTO
Job Number: D342

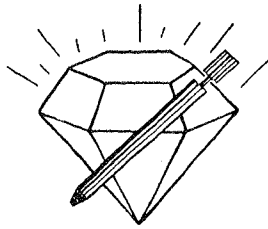
CURTIS 1-31 "B"





This is an actual photograph of recorder chart.

POINT	PRESSURE		PSI
	Field Reading	Elec. Office Reading	
(A) Initial Hydrostatic Mud	1746	1746	PSI
(B) First Initial Flow Pressure.....	1	1	PSI
(C) First Final Flow Pressure	17	17	PSI
(D) Initial Closed-in Pressure	1151	1151	PSI
(E) Second Initial Flow Pressure	19	19	PSI
(F) Second Final Flow Pressure.....	82	82	PSI
(G) Final Closed-in Pressure.....	1140	1140	PSI
(H) Final Hydrostatic Mud	1715	1715	PSI



DIAMOND TESTING

P.O. Box 157
HOISINGTON, KANSAS 67544
(620) 653-7550 • (800) 542-7313
STC 30034.D 343

Company Mull Drilling Co., Inc. Lease & Well No. Curtis "B" No. 1-31
Elevation 2544KB Formation Lansing/Kansas City "E" - "F" Effective Pay -- Ft. Ticket No. J2146
Date 10-18-07 Sec. 13 Twp. 15S Range 26W County Gove State Kansas
Test Approved By Kevin Kessler Diamond Representative John C. Riedl

Formation Test No. 2 Interval Tested from 3,890 ft. to 3,915 ft. Total Depth 3,915 ft.
Packer Depth 3,885 ft. Size 6 3/4 in. Packer Depth -- ft. Size -- in.
Packer Depth 3,890 ft. Size 6 3/4 in. Packer Depth -- ft. Size -- in.

Depth of Selective Zone Set ft.
Top Recorder Depth (Inside) 3,893 ft. Recorder Number 30044 Cap. 5,000 psi
Bottom Recorder Depth (Outside) 3,912 ft. Recorder Number 11073 Cap. 4,000 psi
Below Straddle Recorder Depth ft. Recorder Number Cap. psi

Drilling Contractor Duke Drilling Co., Inc. - Rig 4 Drill Collar Length -- ft. I.D. -- in.
Mud Type Chemical Viscosity 47 Weight Pipe Length -- ft. I.D. -- in.
Weight 8.9 Water Loss 7.2 cc. Drill Pipe Length 3,870 ft. I.D. 3 1/2 in.
Chlorides 2,700 P.P.M. Test Tool Length 20 ft. Tool Size 3 1/2 - IF in.
Jars: Make Bowen Serial Number Not Run Anchor Length 25 ft. Size 4 1/2 - FH in.
Did Well Flow? No Reversed Out No Surface Choke Size 1 in. Bottom Choke Size 5/8 in.
Main Hole Size 7 7/8 in. Tool Joint Size 4 1/2 - XH in.

Blow: 1st Open: Weak, 3 in., blow. No blow back during shut-in.
2nd Open: Good, 6 in., blow. No blow back during shut-in.

Recovered 260 ft. of water = 54.954000 bbls. (Chlorides: 28,000 Ppm)
Recovered ft. of
Recovered ft. of
Recovered ft. of
Recovered ft. of
Remarks

Time Set Packer(s) 6:20 AM P.M. Time Started Off Bottom 9:30 AM P.M. Maximum Temperature 121 °
Initial Hydrostatic Pressure (A) 1834 P.S.I.
Initial Flow Period Minutes 10 (B) 2 P.S.I. to (C) 25 P.S.I.
Initial Closed In Period Minutes 30 (D) 1052 P.S.I.
Final Flow Period Minutes 60 (E) 28 P.S.I. to (F) 128 P.S.I.
Final Closed In Period Minutes 120 (G) 1072 P.S.I.
Final Hydrostatic Pressure (H) 1812 P.S.I.

GENERAL INFORMATION

Client Information:

Company: MULL DRILLING CO INC

Contact: ERNIE MORRISON

Phone: Fax: e-mail:

Site Information:

Contact: KEVIN KESSLER

Phone: Fax: e-mail:

Well Information:

Name: CURTIS 1-31 "B"

Operator: MULL DRILLING CO INC

Location-Downhole: DST#2 3890 TO 3915

Location-Surface: S13/15S/26W GOVE COUNTY

Test Information:

Company: DIAMOND TESTING

Representative: JOHN RIEDL

Supervisor: KEVIN KESSLER

Test Type: CONVENTIONAL

Job Number: D343

Test Unit: 2

Start Date: 2007/10/18

Start Time: 16:45:00

End Date: 2007/10/18

End Time: 23:50:00

Report Date: 2007/10/18

Prepared By: JOHN RIEDL

Remarks:

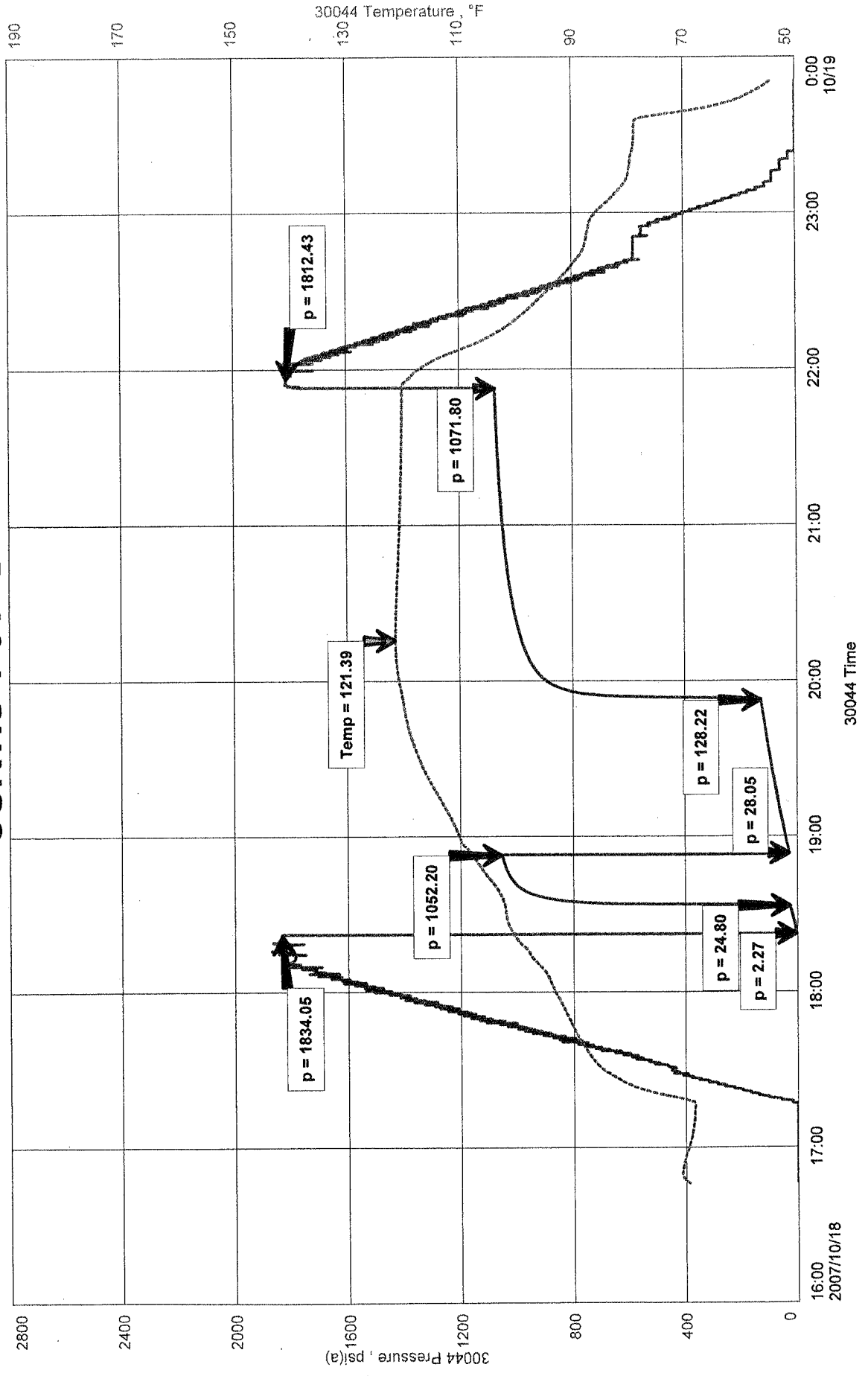
Qualified By: KEVIN KESSLER

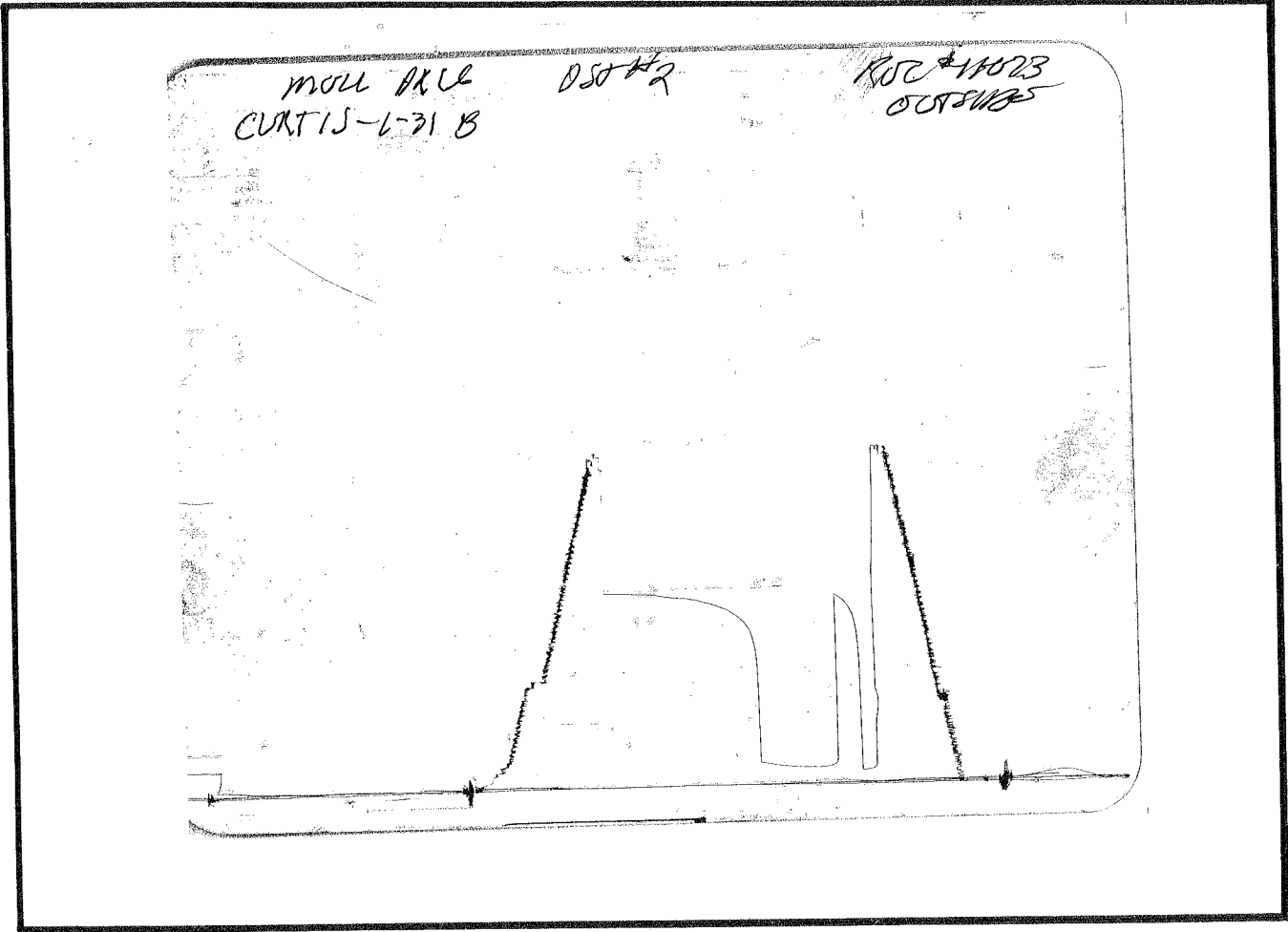
RECOVERY: 260' WATER

MULL DRILLING CO INC
DST#2 3890 TO 3915
Start Test Date: 2007/10/18
Final Test Date: 2007/10/18

CURTIS 1-31 "B"

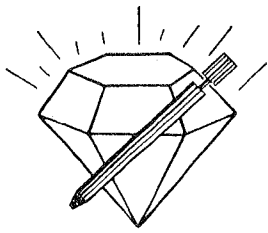
CURTIS 1-31 "B"
Formation: LKC "E+F"
Job Number: D343





This is an actual photograph of recorder chart.

POINT	PRESSURE		Elec. Office Reading	PSI
	Field Reading			
(A) Initial Hydrostatic Mud	1834	1834		PSI
(B) First Initial Flow Pressure	2	2		PSI
(C) First Final Flow Pressure	25	25		PSI
(D) Initial Closed-in Pressure	1052	1052		PSI
(E) Second Initial Flow Pressure	28	28		PSI
(F) Second Final Flow Pressure	128	128		PSI
(G) Final Closed-in Pressure	1072	1072		PSI
(H) Final Hydrostatic Mud	1812	1812		PSI



DIAMOND TESTING

P.O. Box 157

HOISINGTON, KANSAS 67544

(620) 653-7550 • (800) 542-7313

STC 30034.D 344

Company Mull Drilling Co., Inc. Lease & Well No. Curtis "B" No. 1-31

Elevation 2544KB Formation Lansing/Kansas City "J" Effective Pay -- Ft. Ticket No. J2147

Date 10-19-07 Sec. 31 Twp. 15S Range 26W County Gove State Kansas

Test Approved By Kevin Kessler Diamond Representative John C. Riedl

Formation Test No. 3 Interval Tested from 4,025 ft. to 4,060 ft. Total Depth 4,060 ft.

Packer Depth 4,020 ft. Size 6 3/4 in. Packer Depth -- ft. Size -- in.

Packer Depth 4,025 ft. Size 6 3/4 in. Packer Depth -- ft. Size -- in.

Depth of Selective Zone Set ft.

Top Recorder Depth (Inside) 4,028 ft. Recorder Number 30044 Cap. 5,000 psi

Bottom Recorder Depth (Outside) 4,057 ft. Recorder Number 11073 Cap. 4,000 psi

Below Straddle Recorder Depth ft. Recorder Number Cap. psi

Drilling Contractor Duke Drilling Co., Inc. - Rig 4 Drill Collar Length -- ft. I.D. -- in.

Mud Type Chemical Viscosity 47 Weight Pipe Length -- ft. I.D. -- in.

Weight 8.9 Water Loss 7.2 cc. Drill Pipe Length 4,005 ft. I.D. 3 1/2 in.

Chlorides 2,200 P.P.M. Test Tool Length 20 ft. Tool Size 3 1/2 - IF in.

Jars: Make Bowen Serial Number Not Run Anchor Length 35 ft. Size 4 1/2 - FH in.

Did Well Flow? No Reversed Out No Surface Choke Size 1 in. Bottom Choke Size 5/8 in.

Main Hole Size 7 7/8 in. Tool Joint Size 4 1/2 - XH in.

Blow: 1st Open: Weak, surface blow. Dead in 6 mins. No blow back during shut-in.

2nd Open: Weak, surface blow. Dead in 10 mins. No blow back during shut-in.

Recovered 20 ft. of drilling mud = .284000 bbls.

Recovered ft. of

Recovered ft. of

Recovered ft. of

Recovered ft. of

Remarks

Time Set Packer(s) 5:50 AM. P.M. Time Started Off Bottom 8:00 AM. P.M. Maximum Temperature 110°

Initial Hydrostatic Pressure (A) 1910 P.S.I.

Initial Flow Period Minutes 10 (B) P.S.I. to (C) 2 P.S.I.

Initial Closed In Period Minutes 30 (D) 917 P.S.I.

Final Flow Period Minutes 30 (E) 3 P.S.I. to (F) 9 P.S.I.

Final Closed In Period Minutes 60 (G) 905 P.S.I.

Final Hydrostatic Pressure (H) 1880 P.S.I.

GENERAL INFORMATION

Client Information:

Company: MULL DRILLING CO INC
Contact: ERNIE MORRISON
Phone: Fax: e-mail:

Site Information:

Contact: KEVIN KESSLER
Phone: Fax: e-mail:

Well Information:

Name: CURTIS 1-31 "B"
Operator: MULL DRILLING CO INC
Location-Downhole: DSTR #3 4025 TO 4060
Location-Surface: S13/15S/26W GOVE COUNTY

Test Information:

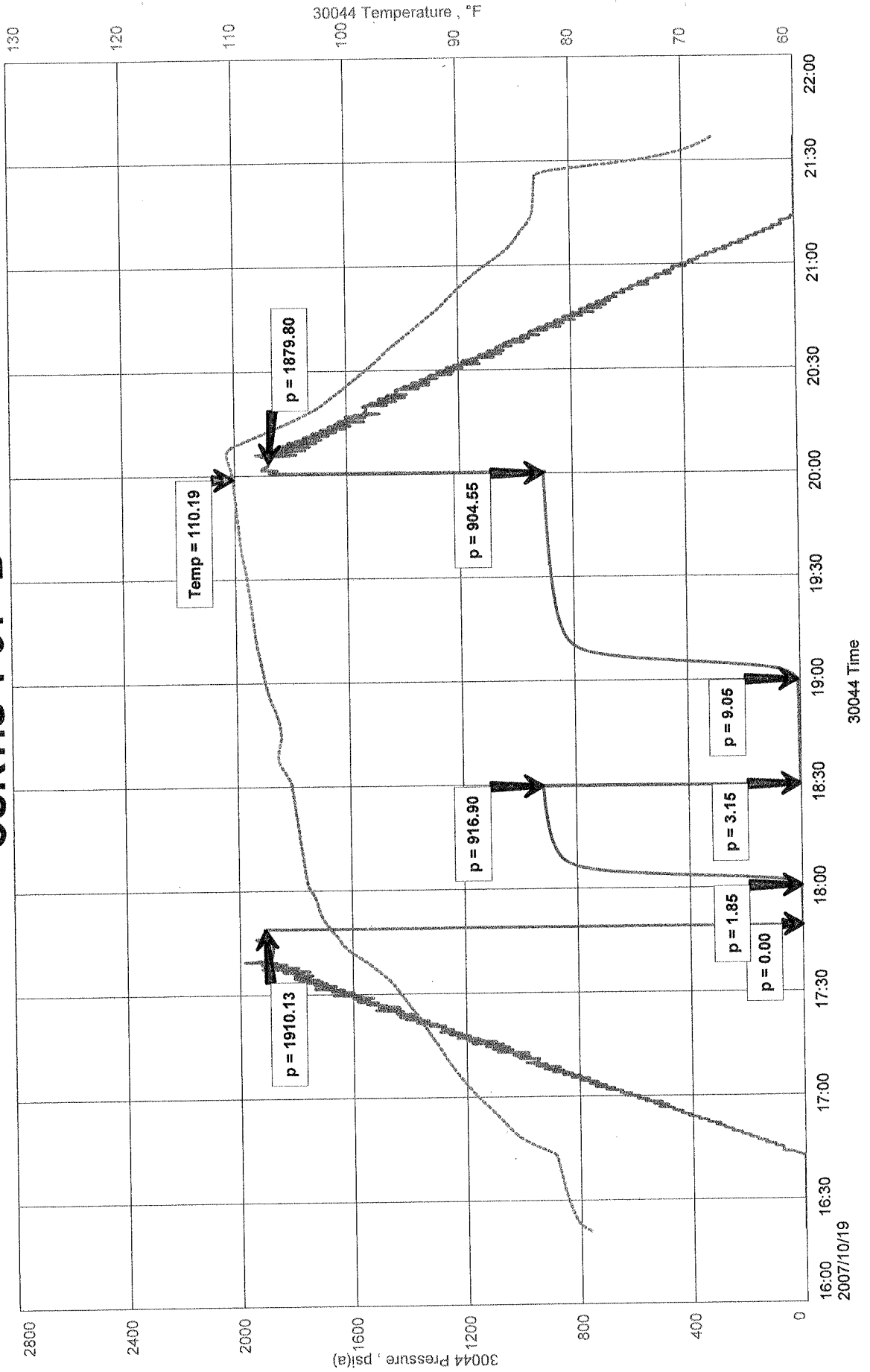
Company: DIAMOND TESTING
Representative: JOHN RIEDL
Supervisor: KEVIN KESSLER
Test Type: CONVENTIONAL Job Number: D344
Test Unit: 2
Start Date: 2007/10/19 Start Time: 16:20:00
End Date: 2007/10/19 End Time: 21:35:00
Report Date: 2007/10/19 Prepared By: JOHN RIEDL
Remarks: Qualified By: KEVIN KESSLER

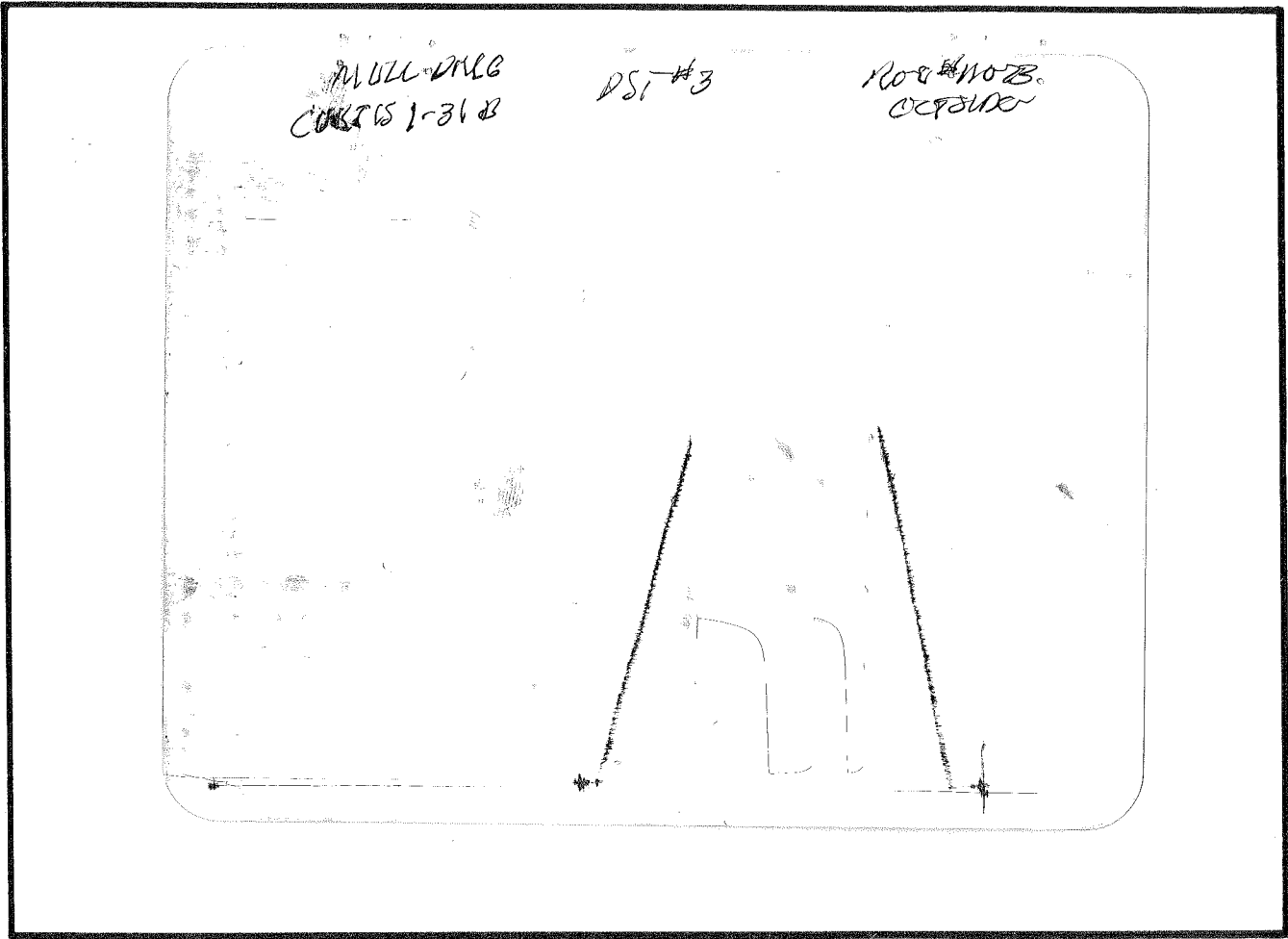
RECOVERY: 20' DRILLING MUD

CURTIS 1-31 "B"
 Formation: LKC "J"
 Job Number: D344

MULL DRILLING CO INC
 DSTR #3 4025 TO 4060
 Start Test Date: 2007/10/19
 Final Test Date: 2007/10/19

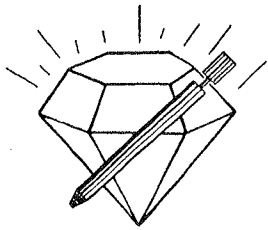
CURTIS 1-31 "B"





This is an actual photograph of recorder chart.

POINT	PRESSURE		Elec. Office Reading	PSI
	Field Reading			
(A) Initial Hydrostatic Mud	1910	1910		PSI
(B) First Initial Flow Pressure.....	--	--		PSI
(C) First Final Flow Pressure	2	2		PSI
(D) Initial Closed-in Pressure	917	917		PSI
(E) Second Initial Flow Pressure	3	3		PSI
(F) Second Final Flow Pressure.....	9	9		PSI
(G) Final Closed-in Pressure.....	905	905		PSI
(H) Final Hydrostatic Mud	1880	1880		PSI



DIAMOND TESTING

P.O. Box 157
HOISINGTON, KANSAS 67544
(620) 653-7550 • (800) 542-7313
STC 30034.D 345

Company Mull Drilling Co., Inc. Lease & Well No. Curtis "B" No. 1-31

Elevation 2544KB Formation Marmaton/Pawnee Effective Pay -- Ft. Ticket No. J2148

Date 10-20-07 Sec. 31 43 Twp. 15S Range 26W County Gove State Kansas

Test Approved By Kevin Kessler Diamond Representative John C. Riedl

Formation Test No. 4 Interval Tested from 4,115 ft. to 4,250 ft. Total Depth 4,250 ft.

Packer Depth 4,110 ft. Size 6 3/4 in. Packer Depth -- ft. Size -- in.

Packer Depth 4,115 ft. Size 6 3/4 in. Packer Depth -- ft. Size -- in.

Depth of Selective Zone Set ft.

Top Recorder Depth (Inside) 4,118 ft. Recorder Number 30044 Cap. 5,000 psi

Bottom Recorder Depth (Outside) 4,247 ft. Recorder Number 11073 Cap. 4,000 psi

Below Straddle Recorder Depth ft. Recorder Number Cap. psi

Drilling Contractor Duke Drilling Co., Inc. - Rig 4 Drill Collar Length -- ft. I.D. -- in.

Mud Type Chemical Viscosity 45 Weight Pipe Length -- ft. I.D. -- in.

Weight 9.1 Water Loss 7.2 cc. Drill Pipe Length 4,095 ft. I.D. 3 1/2 in.

Chlorides 2,700 P.P.M. Test Tool Length 20 ft. Tool Size 3 1/2 - IF in.

Jars: Make Bowen Serial Number Not Run Anchor Length 135 ft. Size 4 1/2 - FH in.

Did Well Flow? No Reversed Out No Surface Choke Size 1 in. Bottom Choke Size 5/8 in.

Main Hole Size 7 7/8 in. Tool Joint Size 4 1/2 - XH in.

Blow: 1st Open: Weak, surface blow. Dead in 2 mins. No blow back during shut-in.

2nd Open: Weak, 1/2 in., blow decreasing. Dead in 14 mins. No blow back during shut-in.

Recovered 25 ft. of slightly oil cut mud = .355000 bbls. (Grind out: 2%-oil; 98%-drilling mud)

Recovered ft. of

Recovered ft. of

Recovered ft. of

Recovered ft. of

Remarks

Time Set Packer(s) 11:40 ~~XXI~~ P.M. Time Started Off Bottom 1:50 ~~XXX~~ A.M. Maximum Temperature 111°

Initial Hydrostatic Pressure (A) 1932 P.S.I.

Initial Flow Period Minutes 10 (B) 1 P.S.I. to (C) 3 P.S.I.

Initial Closed In Period Minutes 30 (D) 659 P.S.I.

Final Flow Period Minutes 30 (E) 3 P.S.I. to (F) 11 P.S.I.

Final Closed In Period Minutes 60 (G) 896 P.S.I.

Final Hydrostatic Pressure (H) 1908 P.S.I.

GENERAL INFORMATION

Client Information:

Company: MULL DRILLING CO INC

Contact: ERNIE MORRISON

Phone: Fax: e-mail:

Site Information:

Contact: KEVIN KESSLER

Phone: Fax: e-mail:

Well Information:

Name: CURTIS 1-31 "B"

Operator: MULL DRILLING CO INC

Location-Downhole: DST #4 4115 TO 4250

Location-Surface: S13/15S/26W GOVE COUNTY

Test Information:

Company: DIAMOND TESTING

Representative: JOHN RIEDL

Supervisor: KEVIN KESSLER

Test Type: CONVENTIONAL

Job Number: D345

Test Unit: 2

Start Date: 2007/10/20

Start Time: 22:00:00

End Date: 2007/10/21

End Time: 04:00:00

Report Date: 2007/10/21

Prepared By: JOHN RIEDL

Remarks:

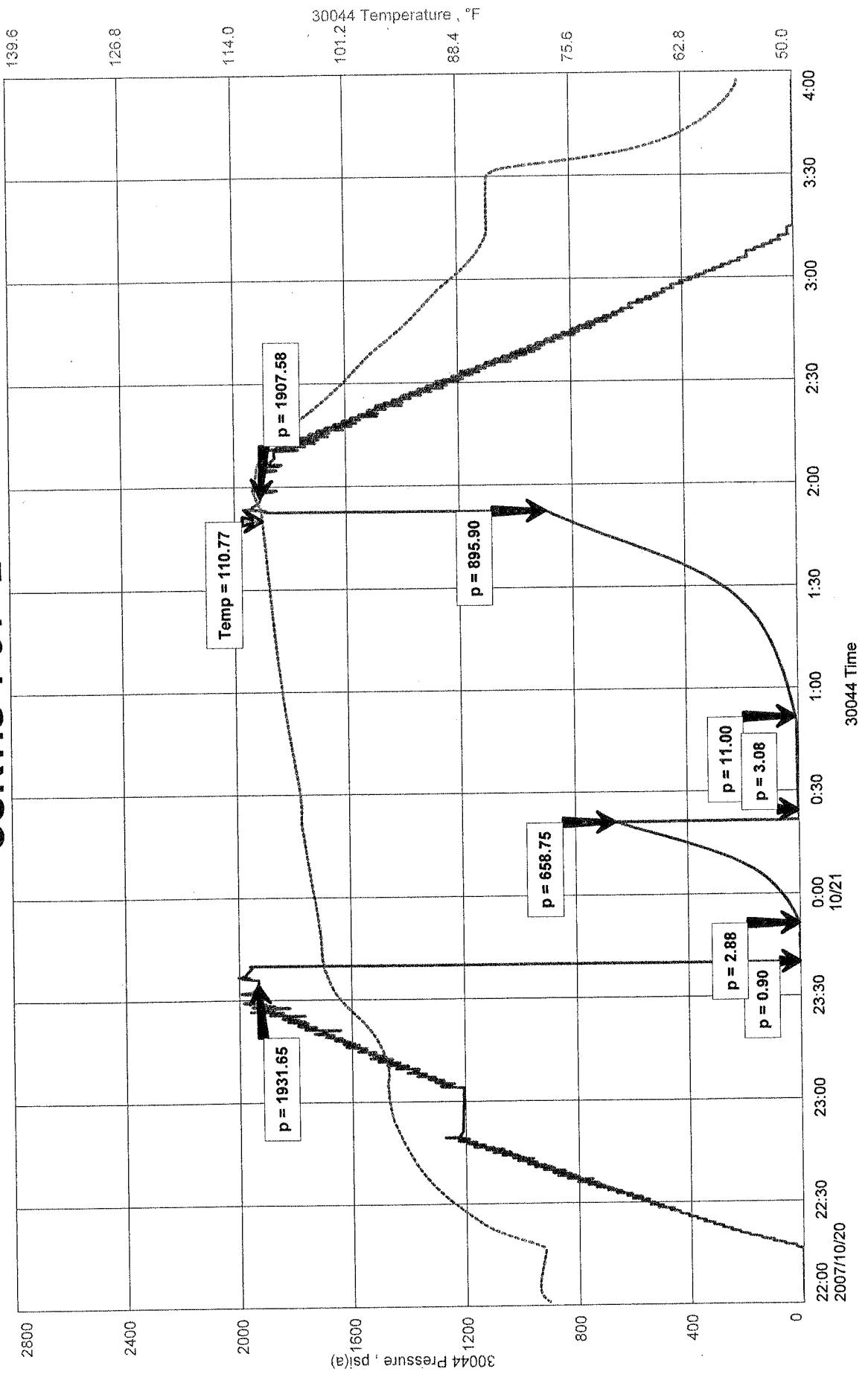
Qualified By: KEVIN KESSLER

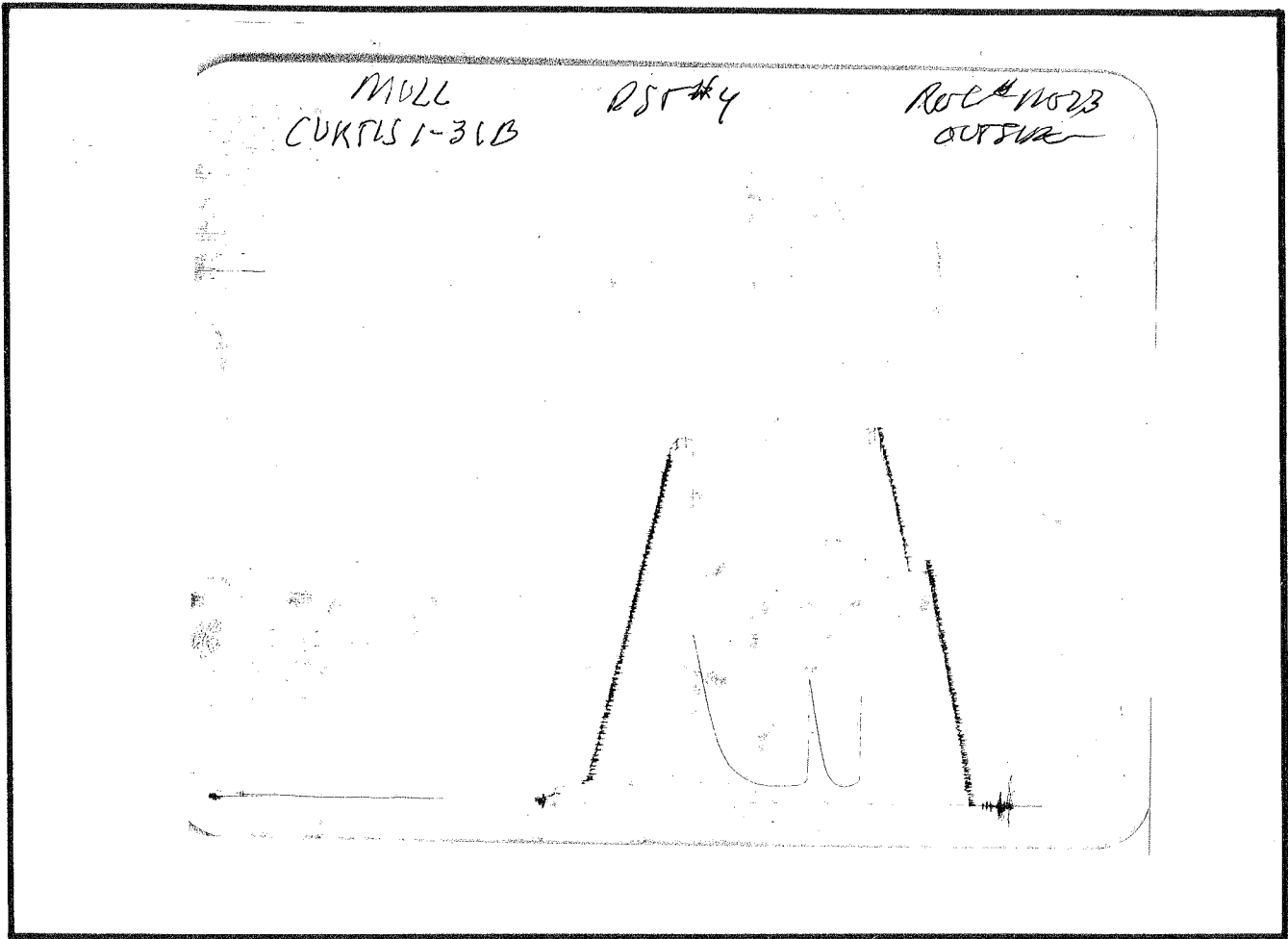
RECOVERY: 25' SLOCM

MULL DRILLING CO INC
 DST #4 4115 TO 4250
 Start Test Date: 2007/10/20
 Final Test Date: 2007/10/21

CURTIS 1-31 "B"

CURTIS 1-31 "B"
 Formation: MARMATON, PAWNEE
 Job Number: D345

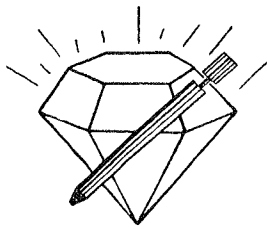




This is an actual photograph of recorder chart.

POINT	PRESSURE		Elec. Office Reading	PSI
	Field Reading			
(A) Initial Hydrostatic Mud	1932	1932		PSI
(B) First Initial Flow Pressure	1	1		PSI
(C) First Final Flow Pressure	3	3		PSI
(D) Initial Closed-in Pressure	659	659		PSI
(E) Second Initial Flow Pressure	3	3		PSI
(F) Second Final Flow Pressure	11	11		PSI
(G) Final Closed-in Pressure	896	896		PSI
(H) Final Hydrostatic Mud	1908	1908		PSI

COMPLIANT WITH THE FEDERAL INFORMATION PRACTICES ACT



DIAMOND TESTING

P.O. Box 157
HOISINGTON, KANSAS 67544
(620) 653-7550 • (800) 542-7313
STC 30034.D 346

Company Mull Drilling Co., Inc. Lease & Well No. Curtis "B" No. 1-31
Elevation 2544KB Formation Fort Scott Effective Pay Ft. Ticket No. J2149
Date 10-21-07 Sec. 31 13 Twp. 15S Range 26W County Gove State Kansas
Test Approved By Kevin Kessler Diamond Representative John C. Riedl

Formation Test No. 5 Interval Tested from 4,290 ft. to 4,350 ft. Total Depth 4,350 ft.
Packer Depth 4,285 ft. Size 6 3/4 in. Packer Depth ft. Size in.
Packer Depth 4,290 ft. Size 6 3/4 in. Packer Depth ft. Size in.
Depth of Selective Zone Set ft.

Top Recorder Depth (Inside) 4,293 ft. Recorder Number 30044 Cap. 5,000 psi
Bottom Recorder Depth (Outside) 4,347 ft. Recorder Number 11073 Cap. 4,000 psi
Below Straddle Recorder Depth ft. Recorder Number Cap. psi

Drilling Contractor Duke Drilling Co., Inc. - Rig 4 Drill Collar Length ft. I.D. in.
Mud Type Chemical Viscosity 47 Weight Pipe Length ft. I.D. in.
Weight 9.0 Water Loss 8.0 cc. Drill Pipe Length 4,270 ft. I.D. 3 1/2 in.
Chlorides 2,500 P.P.M. Test Tool Length 20 ft. Tool Size 3 1/2 - IF in.
Jars: Make Bowen Serial Number Not Run Anchor Length 60 ft. Size 4 1/2 - FH in.
Did Well Flow? No Reversed Out No Surface Choke Size 1 in. Bottom Choke Size 5/8 in.
Main Hole Size 7 7/8 in. Tool Joint Size 4 1/2 - XH in.

Blow: 1st Open: Weak, surface blow. Dead in 1 min.
2nd Open: No blow. Flushed tool and received short surge.

Recovered 5 ft. of drilling mud = .071000 bbls.

Recovered ft. of

Recovered ft. of

Recovered ft. of

Recovered ft. of

Remarks

Time Set Packer(s) 9:32 ~~XXX~~ P.M. Time Started Off Bottom 11:42 ~~XXX~~ P.M. Maximum Temperature 111 °
Initial Hydrostatic Pressure (A) 2026 P.S.I.
Initial Flow Period 10 Minutes (B) P.S.I. to (C) P.S.I.
Initial Closed In Period 30 Minutes (D) 48 P.S.I.
Final Flow Period 30 Minutes (E) P.S.I. to (F) 3 P.S.I.
Final Closed In Period 60 Minutes (G) 47 P.S.I.
Final Hydrostatic Pressure 2004 (H) P.S.I.

GENERAL INFORMATION

Client Information:

Company: MULL DRILLING CO INC

Contact: ERNIE MORRISON

Phone: Fax: e-mail:

Site Information:

Contact: KEVIN KESSLER

Phone: Fax: e-mail:

Well Information:

Name: CURTIS 1-31 "B"

Operator: MULL DRILLING CO INC

Location-Downhole: DST #5 4290 TO 4350

Location-Surface: S13/15S/26W GOVE COUNTY

Test Information:

Company: DIAMOND TESTING

Representative: JOHN RIEDL

Supervisor: KEVIN KESSLER

Test Type: CONVENTIONAL

Job Number: D346

Test Unit: 2

Start Date: 2007/10/21

Start Time: 19:45:00

End Date: 2007/10/22

End Time: 01:55:00

Report Date: 2007/10/22

Prepared By: JOHN RIEDL

Remarks:

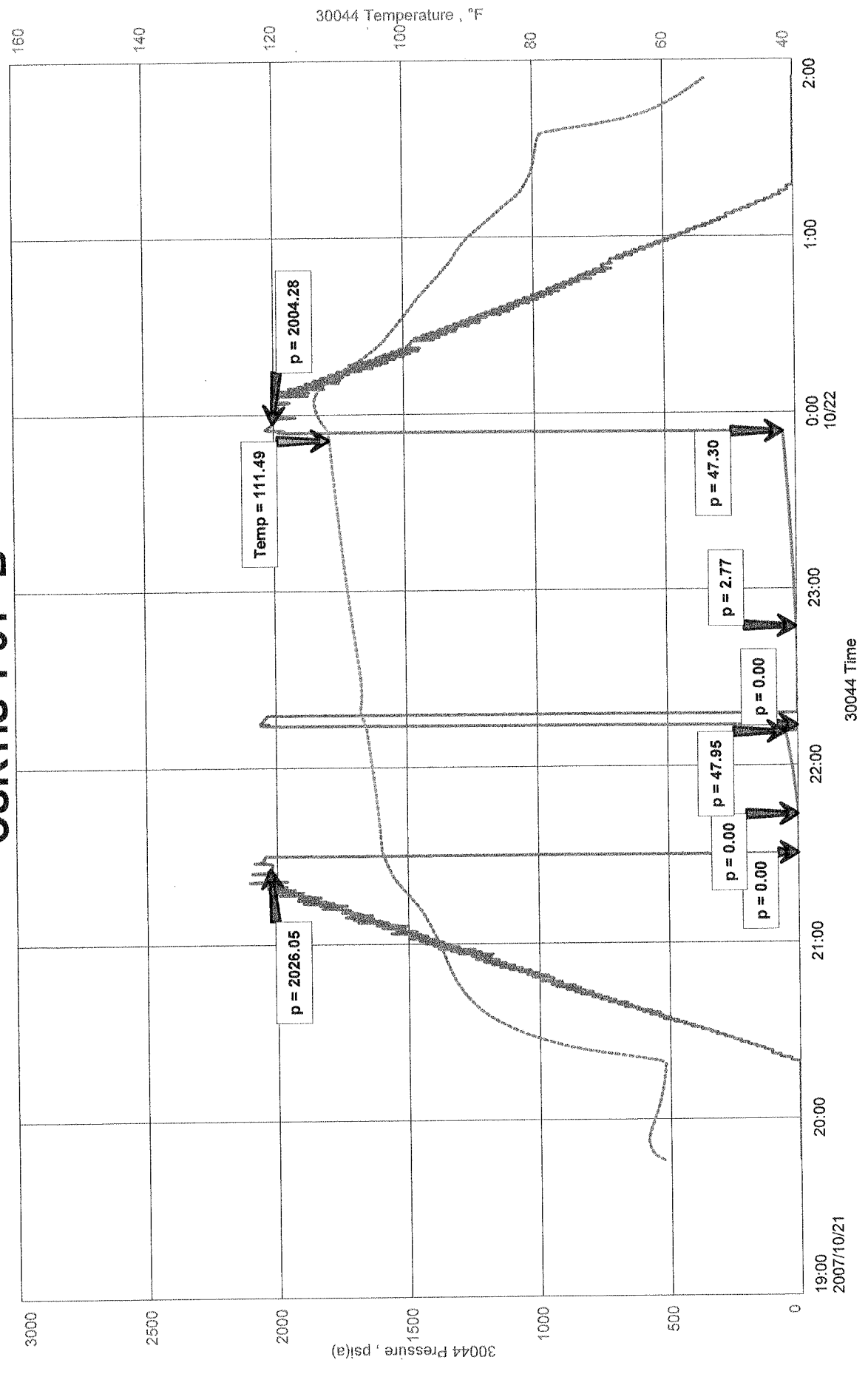
Qualified By: KEVIN KESSLER

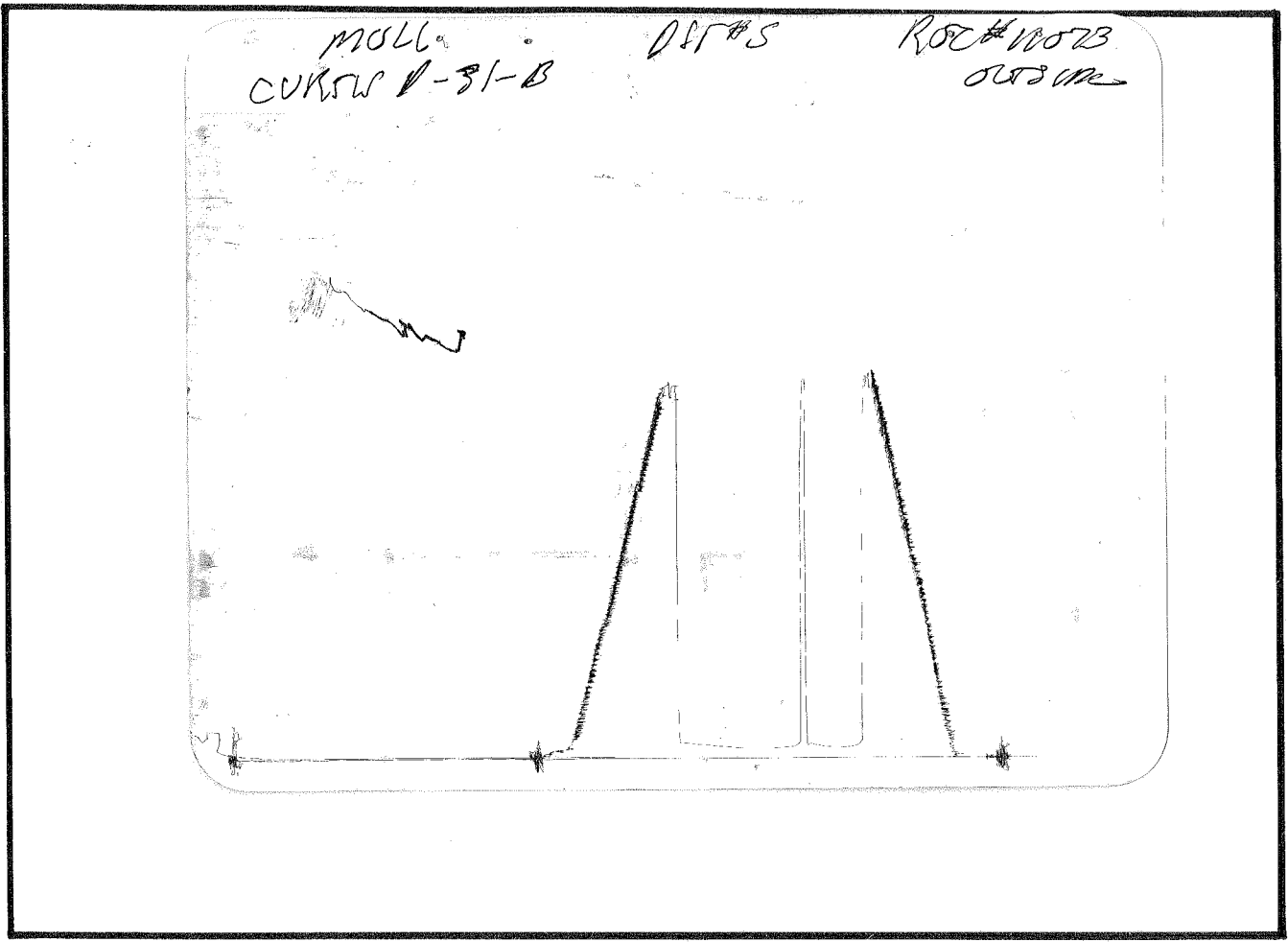
RECOVERY: 5' DRILLING MUD

CURTIS 1-31 "B"
 Formation: FORT SCOTT
 Job Number: D346

MULL DRILLING CO INC
 DST #5 4290 TO 4350
 Start Test Date: 2007/10/21
 Final Test Date: 2007/10/22

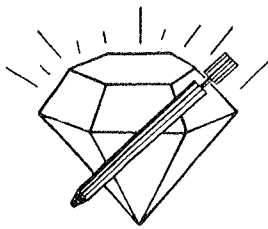
CURTIS 1-31 "B"





This is an actual photograph of recorder chart.

POINT	PRESSURE		PSI
	Field Reading	Elec. Office Reading	
(A) Initial Hydrostatic Mud	2026	2026	PSI
(B) First Initial Flow Pressure.....	--	--	PSI
(C) First Final Flow Pressure	--	--	PSI
(D) Initial Closed-in Pressure	48	48	PSI
(E) Second Initial Flow Pressure	--	--	PSI
(F) Second Final Flow Pressure.....	3	3	PSI
(G) Final Closed-in Pressure.....	47	47	PSI
(H) Final Hydrostatic Mud.....	2004	2004	PSI



DIAMOND TESTING
P.O. Box 157
HOISINGTON, KANSAS 67544
(620) 653-7550 • (800) 542-7313
STC 30034.D 347

Company Mull Drilling Co., Inc. Lease & Well No. Curtis "B" No. 1-31
Elevation 2544KB Formation Mississippi Effective Pay Ft. Ticket No. J2150
Date 10-22-07 Sec. 31 13 Twp. 15S Range 26W County Gove State Kansas
Test Approved By Kevin Kessler Diamond Representative John C. Riedl
Formation Test No. 6 Interval Tested from 4,325 ft. to 4,425 ft. Total Depth 4,425 ft.
Packer Depth 4,320 ft. Size 6 3/4 in. Packer Depth ft. Size in.
Packer Depth 4,325 ft. Size 6 3/4 in. Packer Depth ft. Size in.
Depth of Selective Zone Set ft.

Top Recorder Depth (Inside) 4,328 ft. Recorder Number 30044 Cap. 5,000 psi
Bottom Recorder Depth (Outside) 4,422 ft. Recorder Number 11073 Cap. 4,000 psi
Below Straddle Recorder Depth ft. Recorder Number Cap. psi

Drilling Contractor Duke Drilling Co., Inc. - Rig 4 Drill Collar Length ft. I.D. in.
Mud Type Chemical Viscosity 45 Weight Pipe Length ft. I.D. in.
Weight 9.0 Water Loss 8.0 cc. Drill Pipe Length 4,305 ft. I.D. 3 1/2 in.
Chlorides 1,800 P.P.M. Test Tool Length 20 ft. Tool Size 3 1/2 - IF in.
Jars: Make Bowen Serial Number Not Run Anchor Length 100 ft. Size 4 1/2 - FH in.
Did Well Flow? No Reversed Out No Surface Choke Size 1 in. Bottom Choke Size 5/8 in.
Main Hole Size 7 7/8 in. Tool Joint Size 4 1/2 - XH in.

Blow: 1st Open: Weak, surface blow, then died. Flushed tool and received weak surge.
2nd Open: No blow.

Recovered 5 ft. of free oil = .071000 bbls. (Gravity: 36 @ 60°)
Recovered 95 ft. of oil cut mud = 1.349000 bbls. (Grind out: 25%-oil; 75%-drilling mud)
Recovered 100 ft. of TOTAL FLUID = 1.420000 bbls.
Recovered ft. of
Recovered ft. of

Remarks After test, a crack was found in surface equipment elbow; this caused the loss of the bubble bucket blow.

Time Set Packer(s) 4:40 ~~AM~~ P.M. Time Started Off Bottom 6:50 ~~AM~~ P.M. Maximum Temperature 116°
Initial Hydrostatic Pressure (A) 2071 P.S.I.
Initial Flow Period Minutes 10 (B) 3 P.S.I. to (C) 15 P.S.I.
Initial Closed In Period Minutes 30 (D) 1192 P.S.I.
Final Flow Period Minutes 30 (E) 17 P.S.I. to (F) 39 P.S.I.
Final Closed In Period Minutes 60 (G) 1151 P.S.I.
Final Hydrostatic Pressure (H) 2043 P.S.I.

GENERAL INFORMATION

Client Information:

Company: MULL DRILLING CO INC

Contact: ERNIE MORRISON

Phone: Fax: e-mail:

Site Information:

Contact: KEVIN KESSLER

Phone: Fax: e-mail:

Well Information:

Name: CURTIS 1-31 "B"

Operator: MULL DRILLING CO INC

Location-Downhole: DST #6 4325 TO 4425

Location-Surface: S13/15S/26W GOVE COUNTY

Test Information:

Company: DIAMOND TESTING

Representative: JOHN RIEDL

Supervisor: KEVIN KESSLER

Test Type: CONVENTIONAL

Test Unit: 2

Start Date: 2007/10/22

End Date: 2007/10/22

Report Date: 2007/10/22

Job Number: D347

Start Time: 15:45:00

End Time: 21:45:00

Prepared By: JOHN RIEDL

Qualified By: KEVIN KESSLER

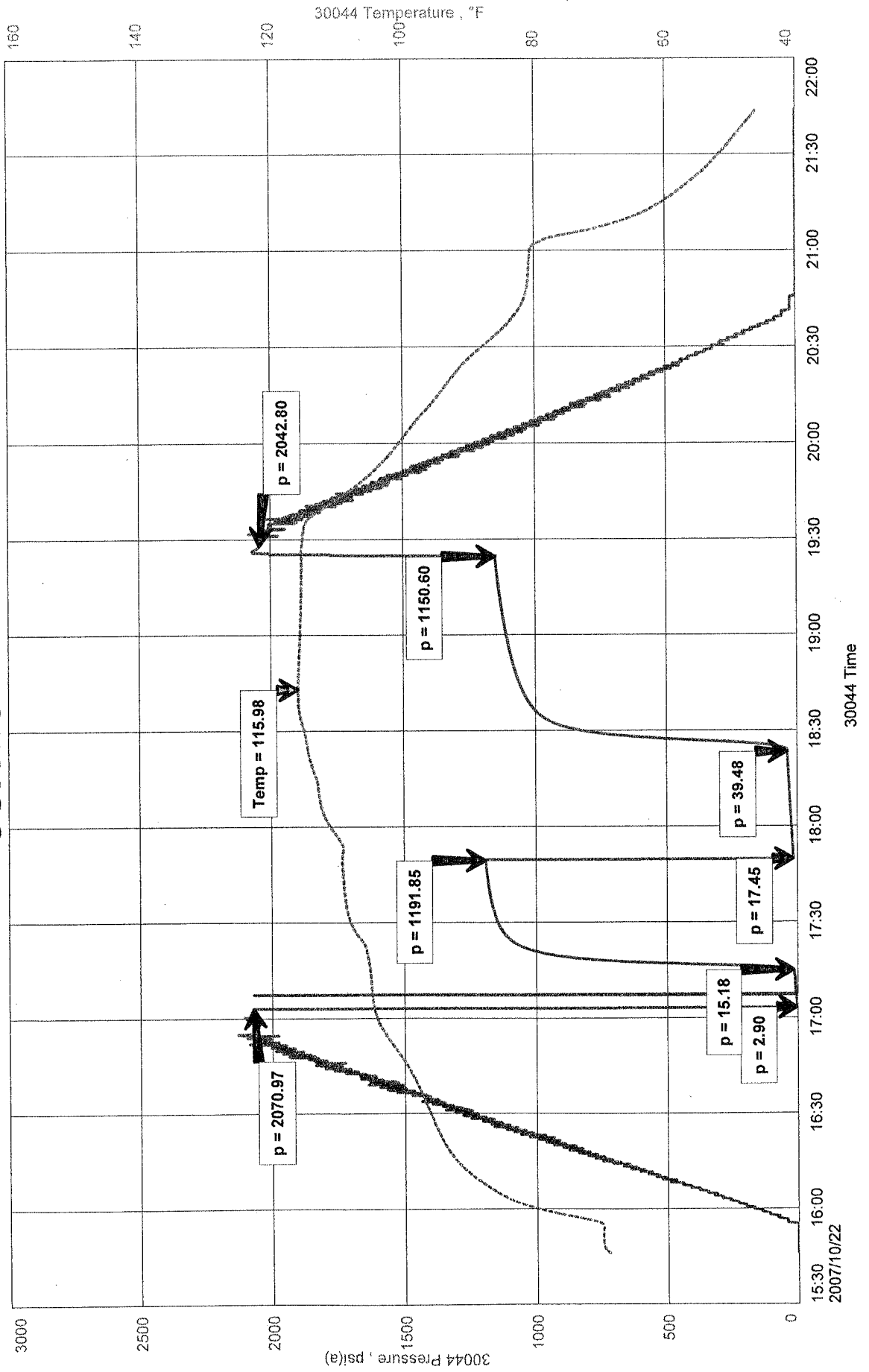
Remarks:

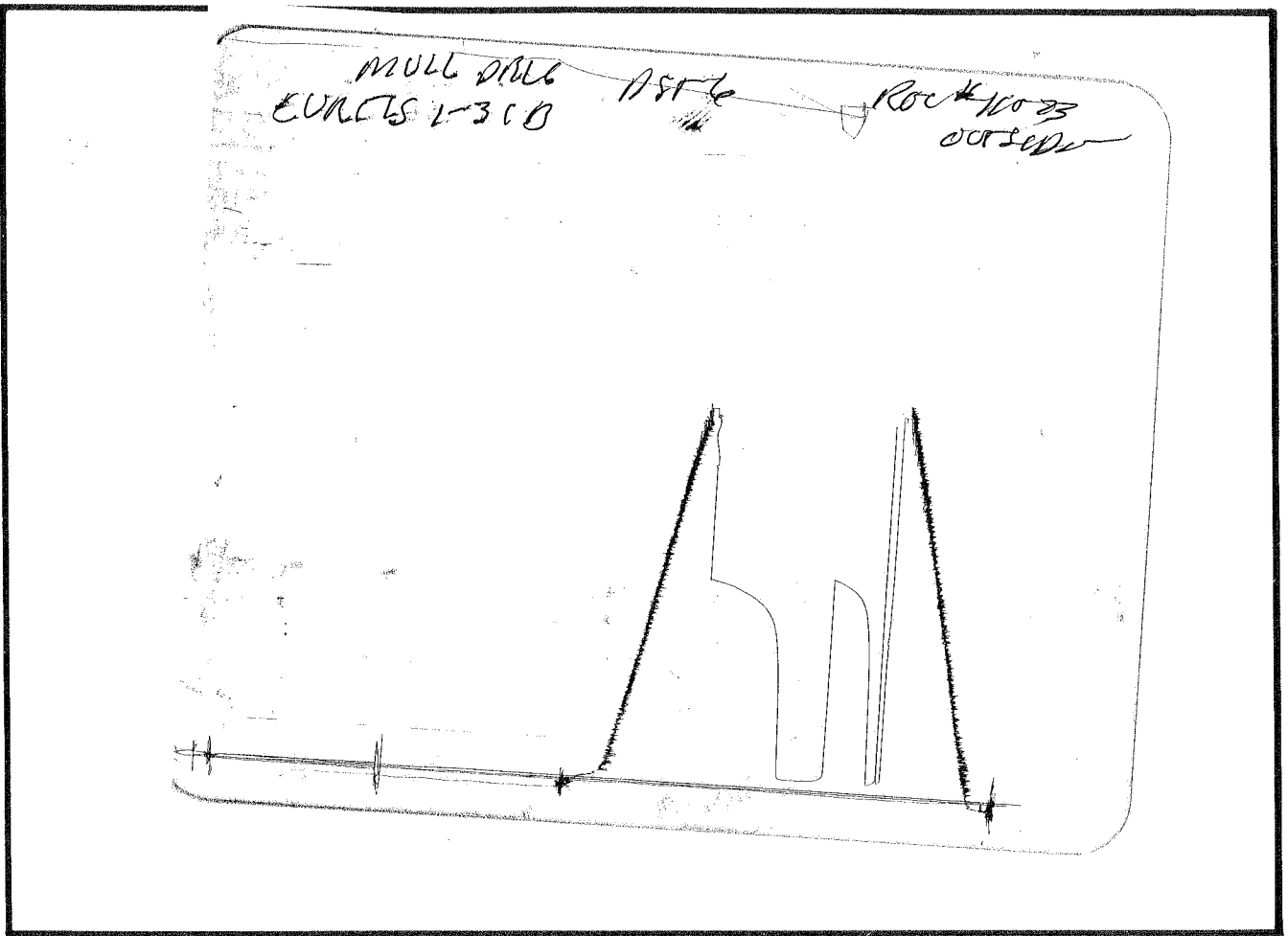
RECOVERY: 5' FREE OIL
95' OCM (25%OIL 75%MUD)

MULL DRILLING CO INC
DST #6 4325 TO 4425
Start Test Date: 2007/10/22
Final Test Date: 2007/10/22

CURTIS 1-31 "B"
Formation: MISSISSIPPI
Job Number: D347

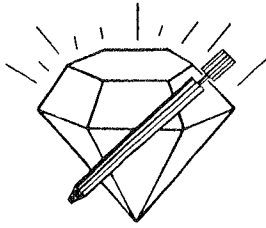
CURTIS 1-31 "B"





This is an actual photograph of recorder chart.

POINT	PRESSURE		Elec. Office Reading	PSI
	Field Reading			
(A) Initial Hydrostatic Mud	2071	2071		PSI
(B) First Initial Flow Pressure	3	3		PSI
(C) First Final Flow Pressure	15	15		PSI
(D) Initial Closed-in Pressure	1192	1192		PSI
(E) Second Initial Flow Pressure	17	17		PSI
(F) Second Final Flow Pressure	39	39		PSI
(G) Final Closed-in Pressure	1151	1151		PSI
(H) Final Hydrostatic Mud	2043	2043		PSI



DIAMOND TESTING
P.O. Box 157
HOISINGTON, KANSAS 67544
(620) 653-7550 • (800) 542-7313
STC 30034.D 348

Company Mull Drilling Co., Inc. Lease & Well No. Curtis "B" No. 1-31
Elevation 2544KB Formation Mississippi Effective Pay Ft. Ticket No. J2151
Date 10-23-07 Sec. 31 ~~13~~ Twp. 15S Range 26W County Gove State Kansas
Test Approved By Kevin Kessler Diamond Representative John C. Riedl

Formation Test No. 7 Interval Tested from 4,420 ft. to 4,432 ft. Total Depth 4,432 ft.
Packer Depth 4,415 ft. Size 6 3/4 in. Packer Depth ft. Size in.
Packer Depth 4,420 ft. Size 6 3/4 in. Packer Depth ft. Size in.
Depth of Selective Zone Set ft.

Top Recorder Depth (Inside) 4,423 ft. Recorder Number 30044 Cap. 5,000 psi
Bottom Recorder Depth (Outside) 4,429 ft. Recorder Number 11073 Cap. 4,000 psi
Below Straddle Recorder Depth ft. Recorder Number Cap. psi

Drilling Contractor Duke Drilling Co., Inc. - Rig 4 Drill Collar Length ft. I.D. in.
Mud Type Chemical Viscosity 47 Weight Pipe Length ft. I.D. in.
Weight 9.0 Water Loss 8.0 cc. Drill Pipe Length 4,400 ft. I.D. 3 1/2 in.
Chlorides 2,000 P.P.M. Test Tool Length 20 ft. Tool Size 3 1/2 - IF in.
Jars: Make Bowen Serial Number Not Run Anchor Length 12 ft. Size 4 1/2 - FH in.
Did Well Flow? No Reversed Out No Surface Choke Size 1 in. Bottom Choke Size 5/8 in.
Main Hole Size 7 7/8 in. Tool Joint Size 4 1/2 - XH in.

Blow: 1st Open: Fair, 4 in., blow. No blow back during shut-in.
2nd Open: Strong, 12 in., blow. Off bottom of bucket in 30 mins. No blow back during shut-in.

Recovered 70 ft. of gas in pipe
Recovered 130 ft. of clean gassy oil = 1.846000 bbls. (Grind out: 10%-gas; 90%-oil) Gravity: 36 @ 60°
Recovered 50 ft. of slightly water cut gassy muddy oil = .710000 bbls. (Grind out: 7%-water; 10%-gas; 25%-mud; 58%-oil)
Recovered 180 ft. of TOTAL FLUID = 2.556000 bbls. Chlorides: 3,000 Ppm
Recovered ft. of

Remarks

Time Set Packer(s) 5:20 ~~P.M.~~ ^{A.M.} Time Started Off Bottom 9:00 ~~P.M.~~ ^{A.M.} Maximum Temperature 124°
Initial Hydrostatic Pressure (A) 2102 P.S.I.
Initial Flow Period Minutes 10 (B) 2 P.S.I. to (C) 9 P.S.I.
Initial Closed In Period Minutes 30 (D) 1222 P.S.I.
Final Flow Period Minutes 60 (E) 14 P.S.I. to (F) 60 P.S.I.
Final Closed In Period Minutes 120 (G) 1185 P.S.I.
Final Hydrostatic Pressure (H) 2070 P.S.I.

GENERAL INFORMATION

Client Information:

Company: MULL DRILLING CO INC

Contact: ERNIE MORRISON

Phone: Fax: e-mail:

Site Information:

Contact: KEVIN KESSLER

Phone: Fax: e-mail:

Well Information:

Name: CURTIS 1-31 "B"

Operator: MULL DRILLING CO INC

Location-Downhole: DST #7 4420 TO 4432

Location-Surface: S13/15S/26W GOVE COUNTY

Test Information:

Company: DIAMOND TESTING

Representative: JOHN RIEDL

Supervisor: KEVIN KESSLER

Test Type: CONVENTIONAL

Job Number: D348

Test Unit: 2

Start Date: 2007/10/23

Start Time: 03:15:00

End Date: 2007/10/23

End Time: 11:40:00

Report Date:

Prepared By:

Remarks:

Qualified By:

RECOVERY: 70' GIP

130' CGO

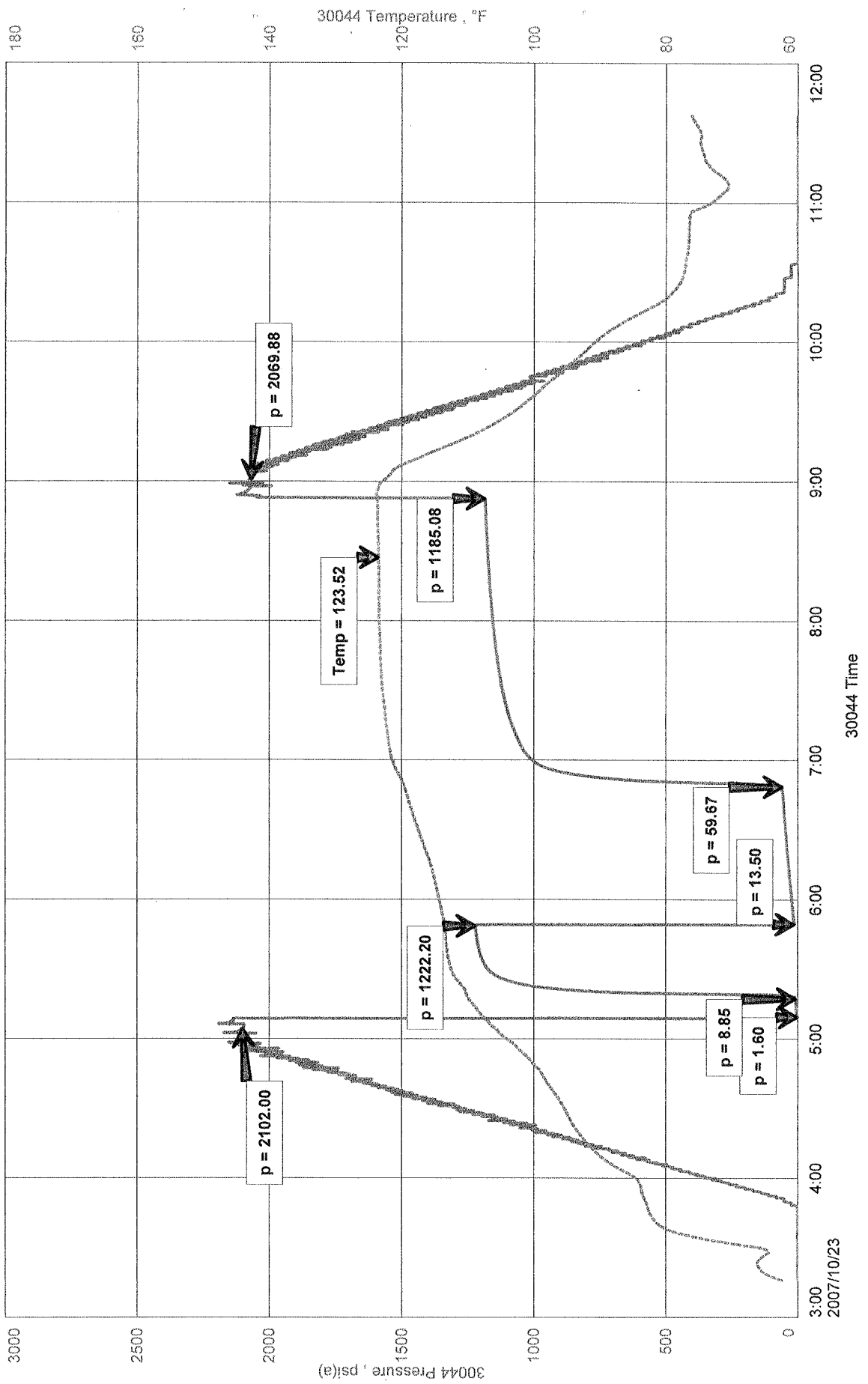
50' SLWCGMO

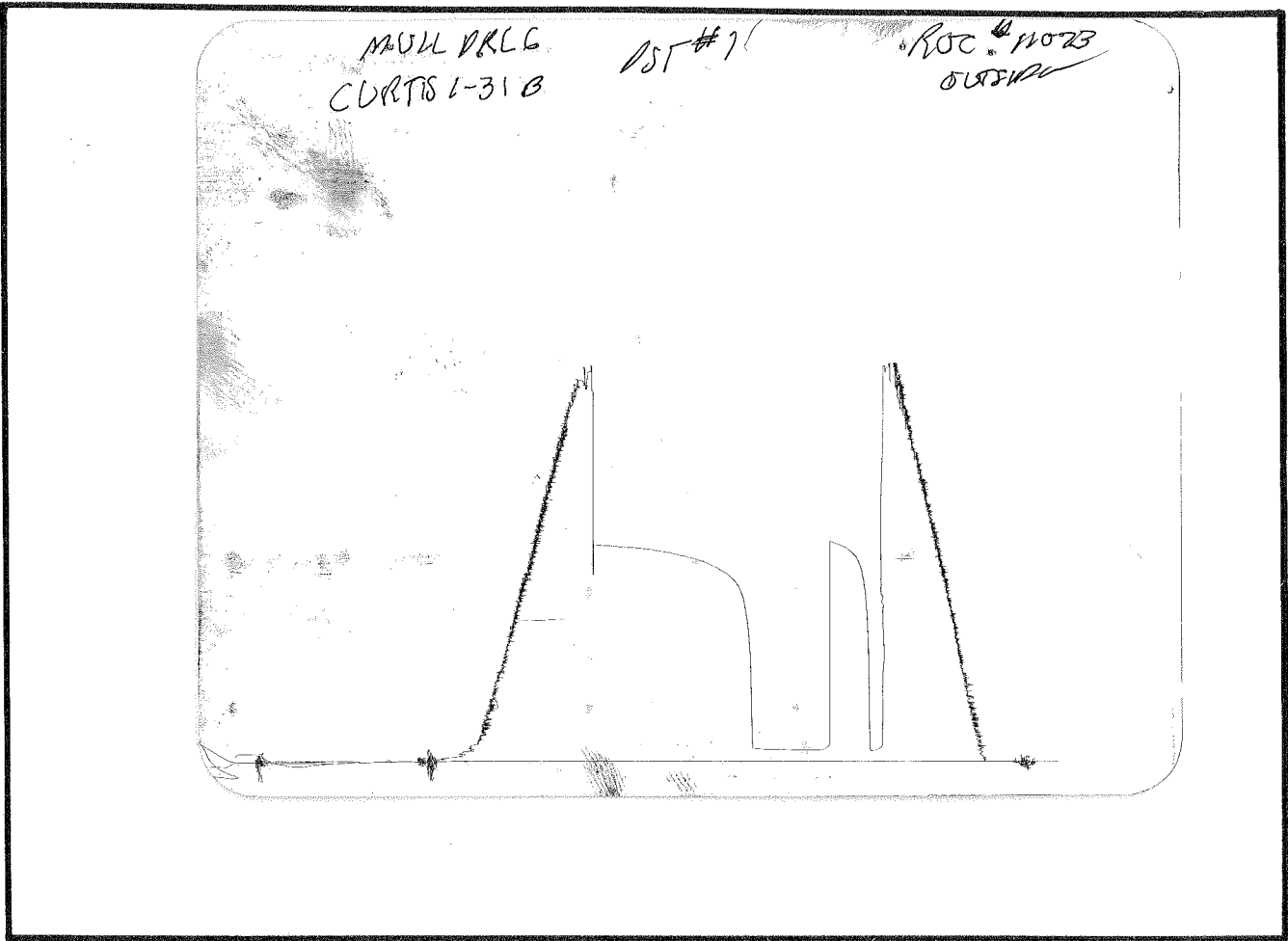
TOTAL FLUID REC: 180' IN D.P

MULL DRILLING CO INC
 DST #7 4420 TO 4432
 Start Test Date: 2007/10/23
 Final Test Date: 2007/10/23

CURTIS 1-31 "B"

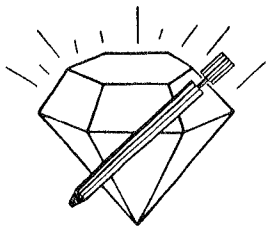
CURTIS 1-31 "B"
 Formation: MISSISSIPPI
 Job Number: D348





This is an actual photograph of recorder chart.

POINT	PRESSURE		Elec. Office Reading	PSI
	Field Reading			
(A) Initial Hydrostatic Mud	2102	2102		PSI
(B) First Initial Flow Pressure	2	2		PSI
(C) First Final Flow Pressure	9	9		PSI
(D) Initial Closed-in Pressure	1222	1222		PSI
(E) Second Initial Flow Pressure	14	14		PSI
(F) Second Final Flow Pressure	60	60		PSI
(G) Final Closed-in Pressure	1185	1185		PSI
(H) Final Hydrostatic Mud	2070	2070		PSI



DIAMOND TESTING

P.O. Box 157

HOISINGTON, KANSAS 67544

(620) 653-7550 • (800) 542-7313

STC 30034.D349

Page 1 of 2 Pages

Company Mull Drilling Co., Inc. Lease & Well No. Curtis "B" No. 1-31

Elevation 2544KB Formation Mississippi Effective Pay -- Ft. Ticket No. J2152

Date 10-23-07 Sec. 31~~13~~ Twp. 15S Range 26W County Gove State Kansas

Test Approved By Kevin Kessler Diamond Representative John C. Riedl

Formation Test No. 8 Interval Tested from 4,432 ft. to 4,447 ft. Total Depth 4,447 ft.

Packer Depth 4,427 ft. Size 6 3/4 in. Packer Depth -- ft. Size -- in.

Packer Depth 4,432 ft. Size 6 3/4 in. Packer Depth -- ft. Size -- in.

Depth of Selective Zone Set ft.

Top Recorder Depth (Inside) 4,435 ft. Recorder Number 30044 Cap. 5,000 psi

Bottom Recorder Depth (Outside) 4,444 ft. Recorder Number 11073 Cap. 4,000 psi

Below Straddle Recorder Depth ft. Recorder Number Cap. psi

Drilling Contractor Duke Drilling Co., Inc. - Rig 4 Drill Collar Length -- ft. I.D. -- in.

Mud Type Chemical Viscosity 54 Weight Pipe Length -- ft. I.D. -- in.

Weight 9.2 Water Loss 8.0 cc. Drill Pipe Length 4,412 ft. I.D. 3 1/2 in.

Chlorides 1,800 P.P.M. Test Tool Length 20 ft. Tool Size 3 1/2 - IF in.

Jars: Make Bowen Serial Number Not Run Anchor Length 15 ft. Size 4 1/2 - FH in.

Did Well Flow? No Reversed Out No Surface Choke Size 1 in. Bottom Choke Size 5/8 in.

Main Hole Size 7 7/8 in. Tool Joint Size 4 1/2 - XH in.

Blow: 1st Open: Weak, 1/4 in., blow. No blow back during shut-in.
2nd Open: Weak, 1/4 in., blow. Dead in 12 mins. No blow back during shut-in.

Recovered 20 ft. of oil cut watery mud = .284000 bbls. (Grind out: 15%-oil; 5%-water; 80%-mud) Chlorides: 3,000 Ppm

Recovered ft. of

Recovered ft. of

Recovered ft. of

Recovered ft. of

Remarks

Time Set Packer(s) 7:50 ~~AM~~ PM Time Started Off Bottom 10:45 ~~AM~~ PM Maximum Temperature 118°

Initial Hydrostatic Pressure (A) 2112 P.S.I.

Initial Flow Period 10 Minutes (B) -- P.S.I. to (C) 3 P.S.I.

Initial Closed In Period 30 Minutes (D) 1190 P.S.I.

Final Flow Period 45 Minutes (E) 1 P.S.I. to (F) 8 P.S.I.

Final Closed In Period 90 Minutes (G) 1180 P.S.I.

Final Hydrostatic Pressure (H) 2063 P.S.I.

GENERAL INFORMATION

Client Information:

Company: MULL DRILLING CO INC

Contact: ERNIE MORRISON

Phone: Fax: e-mail:

Site Information:

Contact: KEVIN KESSLER

Phone: Fax: e-mail:

Well Information:

Name: CURTIS 1-31 "B"

Operator: MULL DRILLING CO INC

Location-Downhole: DST #8 4432 TO 4447

Location-Surface: S13/15S/26W GOVE COUNTY

Test Information:

Company: DIAMOND TESTING

Representative: JOHN RIEDL

Supervisor: KEVIN KESSLER

Test Type: CONVENTIONAL

Job Number: D349

Test Unit: 2

Start Date: 2007/10/23

Start Time: 18:15:00

End Date: 2007/10/24

End Time: 01:15:00

Report Date: 2007/10/24

Prepared By: JOHN RIEDL

Remarks:

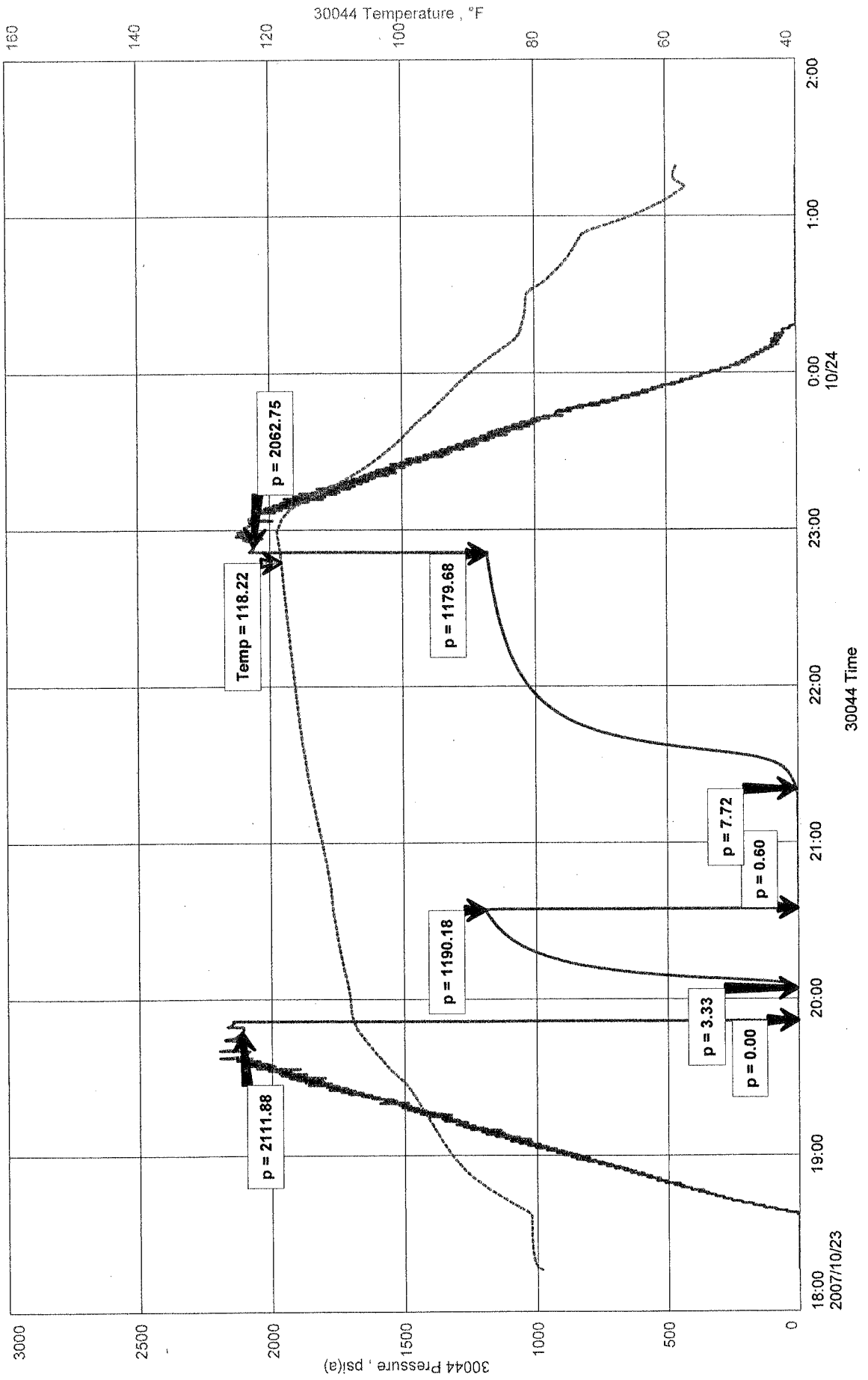
Qualified By: KEVIN KESSLER

RECOVERY: 20' OCM (15%OIL 85%DRILLING MUD)

MULL DRILLING CO INC
DST #8 4432 TO 4447
Start Test Date: 2007/10/23
Final Test Date: 2007/10/24

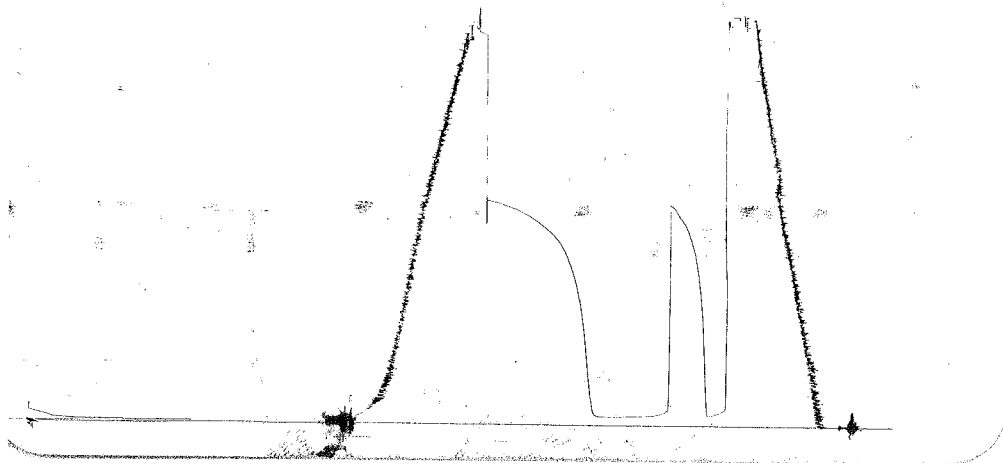
CURTIS 1-31 "B"

CURTIS 1-31 "B"
Formation: MISSISSIPPI
Job Number: D349



MOLLY DRESS DST 8
 QUARTS 1-31 B

ROCKWELL
 OILFIELD



This is an actual photograph of recorder chart.

POINT	PRESSURE		PSI
	Field Reading	Elec. Office Reading	
(A) Initial Hydrostatic Mud	2112	2112	PSI
(B) First Initial Flow Pressure	77	77	PSI
(C) First Final Flow Pressure	3	3	PSI
(D) Initial Closed-in Pressure	1190	1190	PSI
(E) Second Initial Flow Pressure	1	1	PSI
(F) Second Final Flow Pressure	8	8	PSI
(G) Final Closed-in Pressure	1180	1180	PSI
(H) Final Hydrostatic Mud	2063	2063	PSI