

15-063-21667

29-15s-26w

DIAMOND TESTING

P.O. Box 157

HOISINGTON, KANSAS 67544

(620) 653-7550 • (800) 542-7313

STC 21108.D483

Company Mull Drilling Co., Inc. Lease & Well No. Curtis "A" No. 1-29
 Elevation 2580KB Formation Toronto Effective Pay Ft. Ticket No. J2083
 Date 7-03-07 Sec. 29 Twp. 15S Range 26W County Gove State Kansas
 Test Approved By Kevin L. Kessler Diamond Representative John C. Riedl

Formation Test No. 1 Interval Tested from 3,800 ft. to 3,840 ft. Total Depth 3,840 ft.
 Packer Depth 3,795 ft. Size 6 3/4 in. Packer Depth ft. Size in.
 Packer Depth 3,800 ft. Size 6 3/4 in. Packer Depth ft. Size in.
 Depth of Selective Zone Set ft.

Top Recorder Depth (Inside) 3,803 ft. Recorder Number 21108 Cap. 5,000 psi
 Bottom Recorder Depth (Outside) 3,837 ft. Recorder Number 11017 Cap. 4,000 psi
 Below Straddle Recorder Depth ft. Recorder Number Cap. psi

Drilling Contractor Duke Drilling Co., Inc. - Rig 4 Drill Collar Length ft. I.D. in.
 Mud Type Chemical Viscosity 50 Weight Pipe Length ft. I.D. in.
 Weight 8.9 Water Loss 10.0 cc. Drill Pipe Length 3,780 ft. I.D. 3 1/2 in.
 Chlorides 2,500 P.P.M. Test Tool Length 20 ft. Tool Size 3 1/2 - IF in.
 Jars: Make Bowen Serial Number Not Run Anchor Length 40 ft. Size 4 1/2 - FH in.
 Did Well Flow? No Reversed Out No Surface Choke Size 1 in. Bottom Choke Size 5/8 in.
 Main Hole Size 7 7/8 in. Tool Joint Size 4 1/2 - XH in.

Blow: 1st Open: Weak, 2 in., blow.
 2nd Open: Fair, 5 in., blow. No blow back during shut-in.

Recovered 140 ft. of slightly mud cut water = 1.988000 bbls. (Grind out: 10%-mud; 90%-water) Chlorides: 12,000 Ppm

Recovered ft. of
 Recovered ft. of
 Recovered ft. of
 Recovered ft. of
 Remarks

Time Set Packer(s) 9:10 ~~XXX~~ P.M. Time Started Off Bottom 12:50 ~~XXX~~ A.M. Maximum Temperature 119°
 Initial Hydrostatic Pressure (A) 1784 P.S.I.
 Initial Flow Period 10 Minutes (B) 40 P.S.I. to (C) 46 P.S.I.
 Initial Closed In Period 30 Minutes (D) 1243 P.S.I.
 Final Flow Period 60 Minutes (E) 50 P.S.I. to (F) 95 P.S.I.
 Final Closed In Period 120 Minutes (G) 1238 P.S.I.
 Final Hydrostatic Pressure (H) 1727 P.S.I.

GENERAL INFORMATION

Client Information:

Company: MULL DRILLING CO. INC.

Contact: ERNIE MORRISON

Phone: Fax: e-mail:

Site Information:

Contact: KEVIN KESSLER

Phone: Fax: e-mail:

Well Information:

Name: CURTIS "A" #1-29

Operator: MULL DRILLING CO INC

Location-Downhole: DST #1 3800 TO 3840

Location-Surface: S29/15S/26W GOVE COUNTY

Test Information:

Company: DIAMOND TESTING

Representative: JOHN RIEDL

Supervisor: KEVIN KESSLER

Test Type: CONVENTIONAL Job Number: D483

Test Unit: 2

Start Date: 2007/07/03 Start Time: 19:27:00

End Date: 2007/07/04 End Time: 02:40:00

Report Date: 2007/07/04 Prepared By: JOHN RIEDL

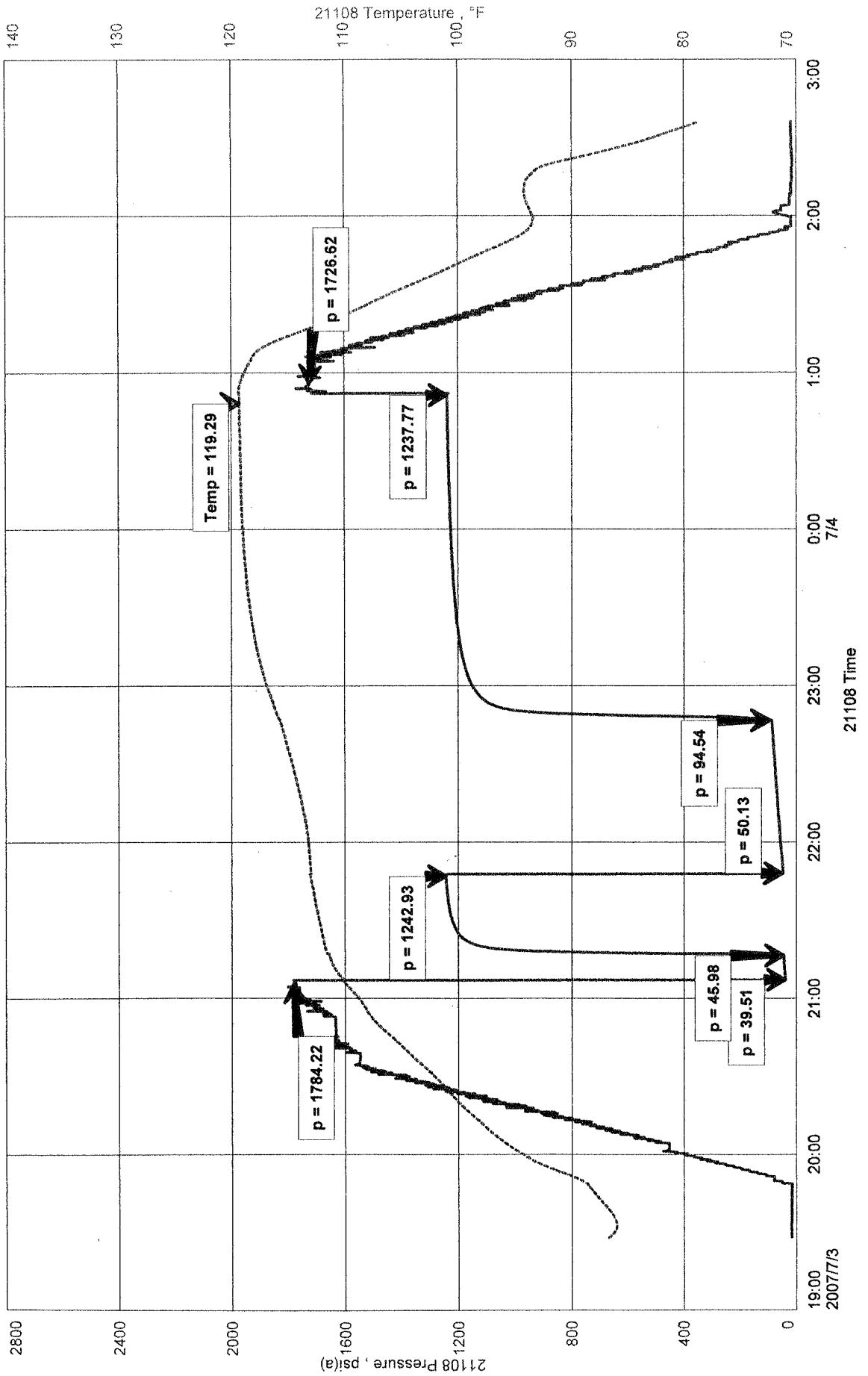
Qualified By: KEVIN KESSLER

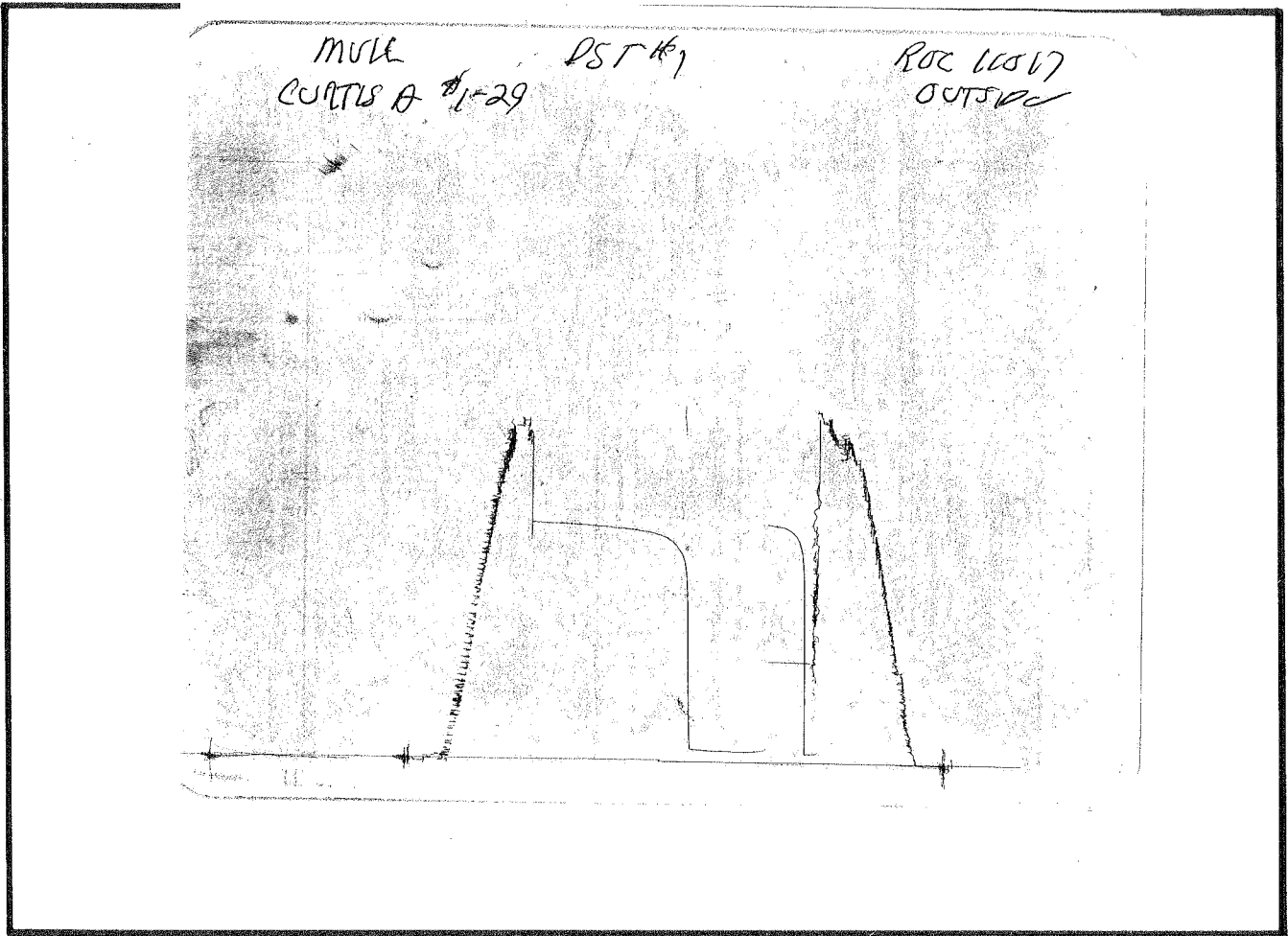
RECOVERY: 140' SLMCW (10%MUD 90%WATER) CHLORIDES 12,000Ppm

MULL DRILLING CO. INC.
DST #1 3800 TO 3840
Start Test Date: 2007/07/03
Final Test Date: 2007/07/04

CURTIS "A" #1-29
Formation: TORONTO
Job Number: D483

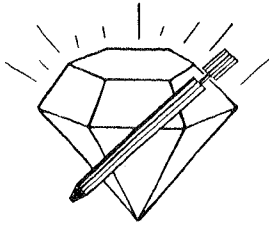
CURTIS "A" #1-29





This is an actual photograph of recorder chart.

POINT	PRESSURE		PSI
	Field Reading	Elec. Office Reading	
(A) Initial Hydrostatic Mud	1784	1784	PSI
(B) First Initial Flow Pressure	40	40	PSI
(C) First Final Flow Pressure	46	46	PSI
(D) Initial Closed-in Pressure	1243	1243	PSI
(E) Second Initial Flow Pressure	50	50	PSI
(F) Second Final Flow Pressure	95	95	PSI
(G) Final Closed-in Pressure	1238	1238	PSI
(H) Final Hydrostatic Mud	1727	1727	PSI



DIAMOND TESTING

P.O. Box 157
HOISINGTON, KANSAS 67544
(620) 653-7550 • (800) 542-7313
STC 21108.D484

Company Mull Drilling Co., Inc. Lease & Well No. Curtis "A" No. 1-29
Elevation 2580KB Formation Lansing/Kansas City "E" - "F" Effective Pay -- Ft. Ticket No. J2084
Date 7-04-07 Sec. 29 Twp. 15S Range 26W County Gove State Kansas
Test Approved By Kevin L. Kessler Diamond Representative John G. Riedl

Formation Test No. 2 Interval Tested from 3,910 ft. to 3,945 ft. Total Depth 3,945 ft.
Packer Depth 3,905 ft. Size 6 3/4 in. Packer Depth -- ft. Size -- in.
Packer Depth 3,910 ft. Size 6 3/4 in. Packer Depth -- ft. Size -- in.
Depth of Selective Zone Set ft.

Top Recorder Depth (Inside) 3,913 ft. Recorder Number 21108 Cap. 5,000 psi
Bottom Recorder Depth (Outside) 3,942 ft. Recorder Number 11017 Cap. 4,000 psi
Below Straddle Recorder Depth ft. Recorder Number Cap. psi

Drilling Contractor Duke Drilling Co., Inc. - Rig 4 Drill Collar Length -- ft. I.D. -- in.
Mud Type Chemical Viscosity 45 Weight Pipe Length -- ft. I.D. -- in.
Weight 8.8 Water Loss 9.0 cc. Drill Pipe Length 3,890 ft. I.D. 3 1/2 in.
Chlorides 2,500 P.P.M. Test Tool Length 20 ft. Tool Size 3 1/2 - IF in.
Jars: Make Bowen Serial Number Not Run Anchor Length 35 ft. Size 4 1/2 - FH in.
Did Well Flow? No Reversed Out No Surface Choke Size 1 in. Bottom Choke Size 5/8 in.
Main Hole Size 7/8 in. Tool Joint Size 4 1/2 - XH in.

Blow: 1st Open: Strong blow. Off bottom of bucket in 3 mins. Weak blow back during shut-in.
2nd Open: Strong blow. Off bottom of bucket in 3 mins.

Recovered 1,700 ft. of water = 24.140000 bbls. (Chlorides: 55,000 Ppm)

Recovered ft. of
Recovered ft. of
Recovered ft. of
Recovered ft. of

Remarks

Time Set Packer(s)	<u>2:20</u>	XXX P.M.	Time Started Off Bottom	<u>6:00</u>	XXX P.M.	Maximum Temperature	<u>126°</u>
Initial Hydrostatic Pressure		(A)		<u>1872</u>		P.S.I.	
Initial Flow Period	Minutes <u>10</u>	(B)		<u>61</u>		P.S.I. to (C)	<u>206</u> P.S.I.
Initial Closed In Period	Minutes <u>30</u>	(D)		<u>1133</u>		P.S.I.	
Final Flow Period	Minutes <u>60</u>	(E)		<u>219</u>		P.S.I. to (F)	<u>803</u> P.S.I.
Final Closed In Period	Minutes <u>120</u>	(G)		<u>1125</u>		P.S.I.	
Final Hydrostatic Pressure		(H)		<u>1847</u>		P.S.I.	

GENERAL INFORMATION

Client Information:

Company: MULL DRILLING CO. INC.
Contact: ERNIE MORRISON
Phone: Fax: e-mail:

Site Information:

Contact: KEVIN KESSLER
Phone: Fax: e-mail:

Well Information:

Name: CURTIS "A" #1-29
Operator: MULL DRILLING CO INC
Location-Downhole: DST #2 3910 TO 3945
Location-Surface: S29/15S/26W GOVE COUNTY

Test Information:

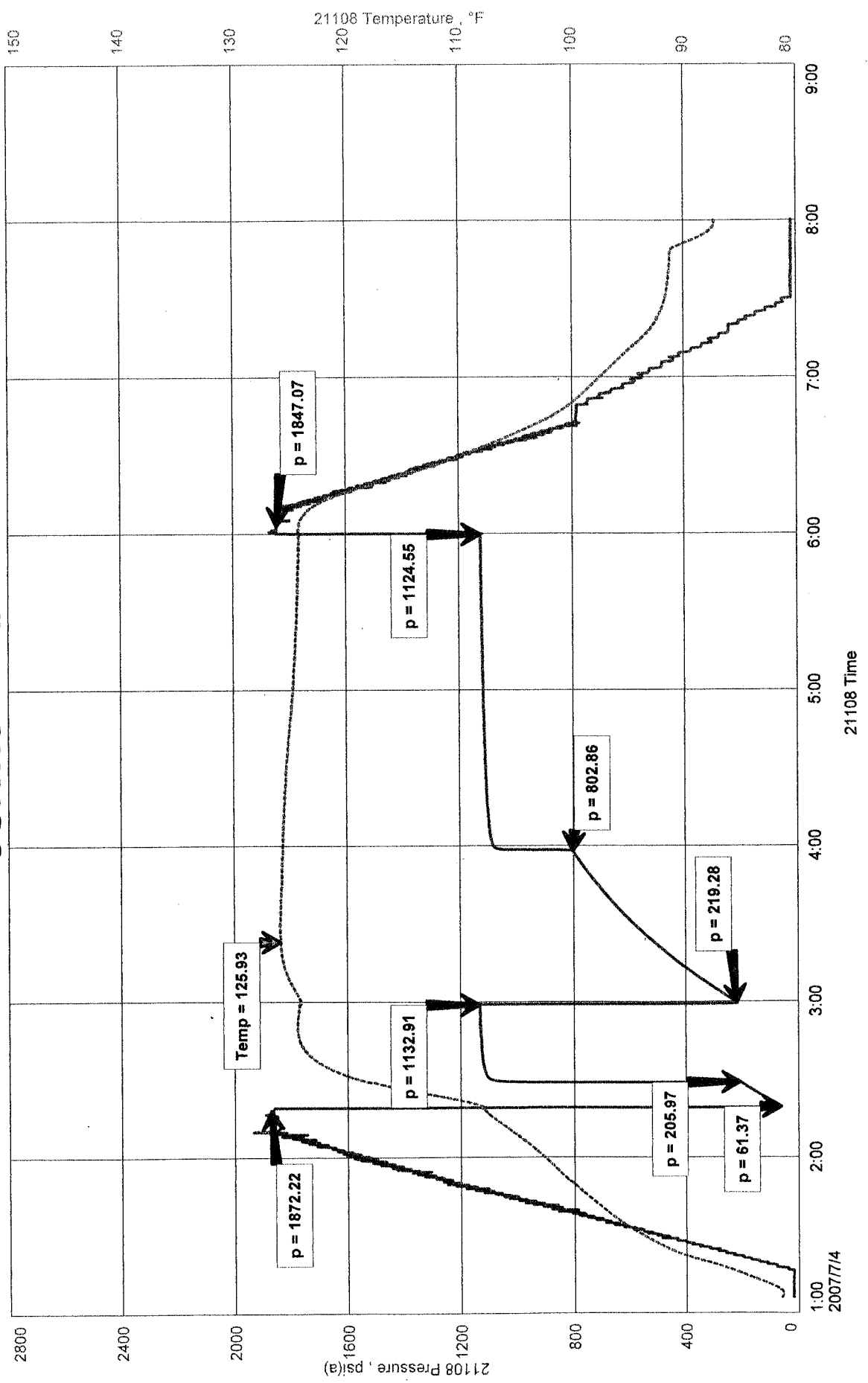
Company: DIAMOND TESTING
Representative: JOHN RIEDL
Supervisor: KEVIN KESSLER
Test Type: CONVENTIONAL Job Number: D484
Test Unit: 2
Start Date: 2007/07/04 Start Time: 01:05:00
End Date: 2007/07/04 End Time: 20:00:00
Report Date: 2007/07/04 Prepared By: JOHN RIEDL
Remarks: Qualified By: KEVIN KESSLER

RECOVERY: 1700' WATER (CHLORIDES 55,000Ppm)

CURTIS "A" #1-29
 Formation: LKC "E,F"
 Job Number: D484

MULL DRILLING CO. INC.
 DST #2 3910 TO 3945
 Start Test Date: 2007/07/04
 Final Test Date: 2007/07/04

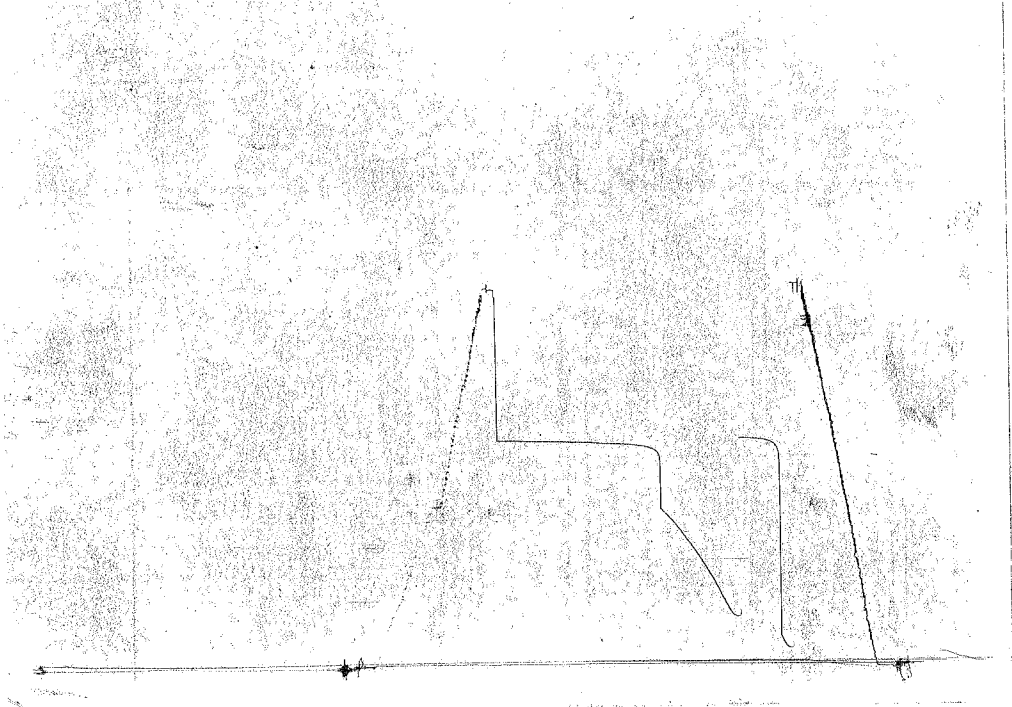
CURTIS "A" #1-29



MUZZ
CURTIS D^y-29

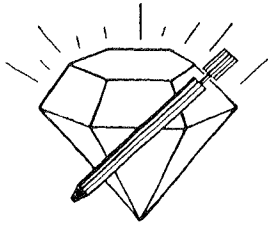
DST #2

ROC #10017
DUSTING



This is an actual photograph of recorder chart.

POINT	PRESSURE		PSI
	Field Reading	Elec. Office Reading	
(A) Initial Hydrostatic Mud	1872	1872	PSI
(B) First Initial Flow Pressure.....	61	61	PSI
(C) First Final Flow Pressure	206	206	PSI
(D) Initial Closed-in Pressure	1133	1133	PSI
(E) Second Initial Flow Pressure.....	219	219	PSI
(F) Second Final Flow Pressure.....	803	803	PSI
(G) Final Closed-in Pressure.....	1125	1125	PSI
(H) Final Hydrostatic Mud.....	1847	1847	PSI



DIAMOND TESTING

P.O. Box 157
HOISINGTON, KANSAS 67544
(620) 653-7550 • (800) 542-7313
STC 21108.D 485

Company Mull Drilling Co., Inc. Lease & Well No. Curtis "A" No. 1-29
Elevation 2580KB Formation Lansing/Kansas City "H" Effective Pay -- Ft. Ticket No. J2085
Date 7-05-07 Sec. 29 Twp. 15S Range 26W County Gove State Kansas
Test Approved By Kevin L. Kessler Diamond Representative John C. Riedl

Formation Test No. 3 Interval Tested from 3,985 ft. to 4,030 ft. Total Depth 4,030 ft.
Packer Depth 3,980 ft. Size 6 3/4 in. Packer Depth -- ft. Size -- in.
Packer Depth 3,985 ft. Size 6 3/4 in. Packer Depth -- ft. Size -- in.
Depth of Selective Zone Set ft.

Top Recorder Depth (Inside) 3,988 ft. Recorder Number 21108 Cap. 5,000 psi
Bottom Recorder Depth (Outside) 4,027 ft. Recorder Number 11017 Cap. 4,000 psi
Below Straddle Recorder Depth ft. Recorder Number Cap. psi

Drilling Contractor Duke Drilling Co., Inc. - Rig 4 Drill Collar Length -- ft. I.D. -- in.
Mud Type Chemical Viscosity 45 Weight Pipe Length -- ft. I.D. -- in.
Weight 9.1 Water Loss 8.5 cc. Drill Pipe Length 3,965 ft. I.D. 3 1/2 in.
Chlorides 2,800 P.P.M. Test Tool Length 20 ft. Tool Size 3 1/2 - IF in.
Jars: Make Bowen Serial Number Not Run Anchor Length 45 ft. Size 4 1/2 - FH in.
Did Well Flow? No Reversed Out No Surface Choke Size 1 in. Bottom Choke Size 5/8 in.
Main Hole Size 7 7/8 in. Tool Joint Size 4 1/2 - XH in.

Blow: 1st Open: Strong, 11 in., blow. No blow back during shut-in.
2nd Open: Strong blow. Off bottom of bucket in 12 mins.

Recovered 2 ft. of free oil = .028400 bbls.

Recovered 650 ft. of water = 9.230000 bbls. (Chlorides: 60,000 Ppm)

Recovered 652 ft. of TOTAL FLUID = 9.258400 bbls.

Recovered ft. of

Recovered ft. of

Remarks

Time Set Packer(s) 6:22 ~~P.M.~~ A.M. Time Started Off Bottom 10:02 ~~P.M.~~ A.M. Maximum Temperature 126°
Initial Hydrostatic Pressure (A) 1901 P.S.I.
Initial Flow Period Minutes 10 (B) 37 P.S.I. to (C) 82 P.S.I.
Initial Closed In Period Minutes 30 (D) 1176 P.S.I.
Final Flow Period Minutes 60 (E) 87 P.S.I. to (F) 325 P.S.I.
Final Closed In Period Minutes 120 (G) 1180 P.S.I.
Final Hydrostatic Pressure (H) 1884 P.S.I.

GENERAL INFORMATION

Client Information:

Company: MULL DRILLING CO. INC.

Contact: ERNIE MORRISON

Phone: Fax: e-mail:

Site Information:

Contact: KEVIN KESSLER

Phone: Fax: e-mail:

Well Information:

Name: CURTIS "A" #1-29

Operator: MULL DRILLING CO. INC.

Location-Downhole: DST #3 3985 TO 4030

Location-Surface: S29/15S/26W GOVE COUNTY

Test Information:

Company: DIAMOND TESTING

Representative: JOHN RIEDL

Supervisor: KEVIN KESSLER

Test Type: CONVENTIONAL Job Number: D485

Test Unit: 2

Start Date: 2007/07/05 Start Time: 05:00:00

End Date: 2007/07/05 End Time: 12:00:00

Report Date: 2007/07/05 Prepared By: JOHN RIEDL

Qualified By: KEVIN KESSLER

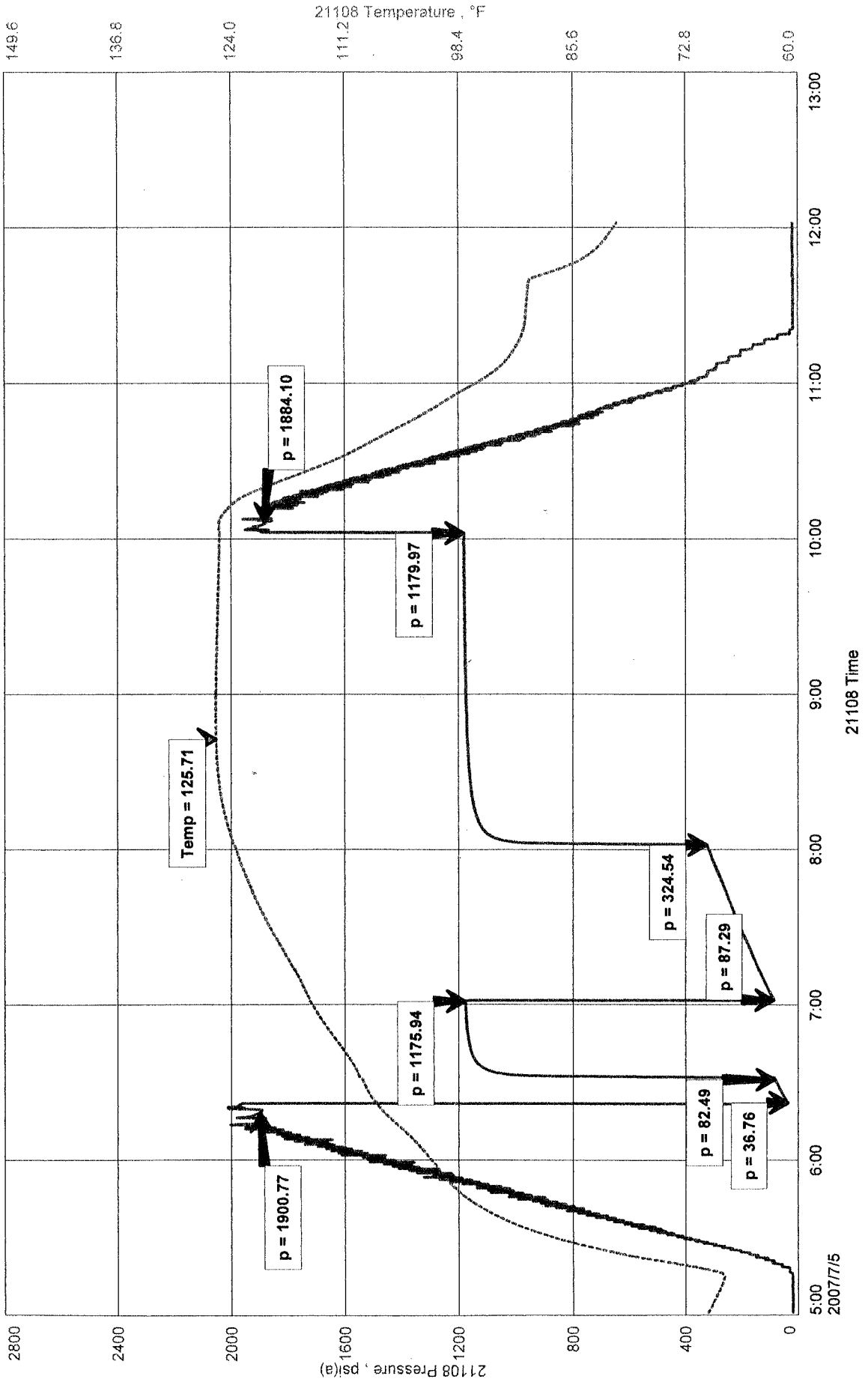
Remarks:

RECOVERY: 2' FREEOIL
650' WATER (CHLORIDES 60,000Ppm)

MULL DRILLING CO. INC.
 DST #3 3985 TO 4030
 Start Test Date: 2007/07/05
 Final Test Date: 2007/07/05

CURTIS "A" #1-29

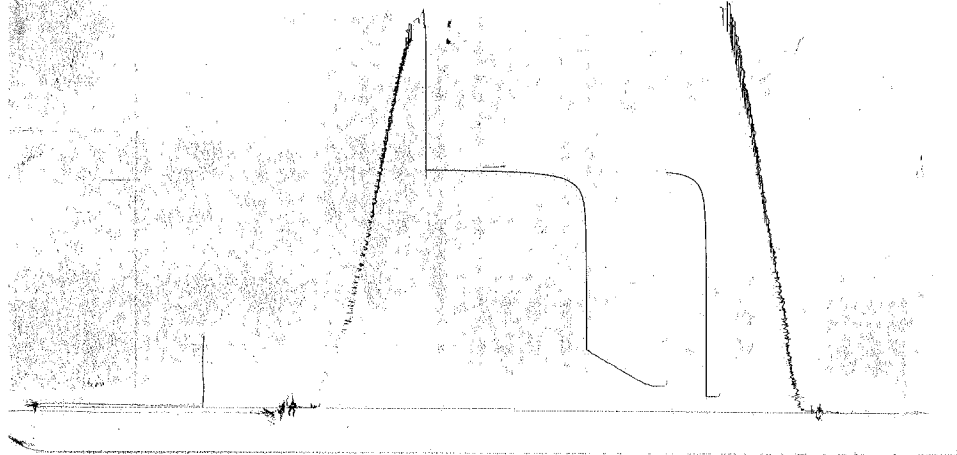
CURTIS "A" #1-29
 Formation: LKC "H"
 Job Number: D485



MOLL
CURTIS A #1-29

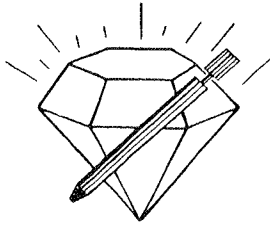
DST#3

ROC#21108
OUTSIDE



This is an actual photograph of recorder chart.

POINT	PRESSURE		Elec. Office Reading	PSI
	Field Reading			
(A) Initial Hydrostatic Mud	1901	1901		PSI
(B) First Initial Flow Pressure.....	37	37		PSI
(C) First Final Flow Pressure	82	82		PSI
(D) Initial Closed-in Pressure	1176	1176		PSI
(E) Second Initial Flow Pressure	87	87		PSI
(F) Second Final Flow Pressure.....	325	325		PSI
(G) Final Closed-in Pressure.....	1180	1180		PSI
(H) Final Hydrostatic Mud	1884	1884		PSI



DIAMOND TESTING

P.O. Box 157
HOISINGTON, KANSAS 67544
(620) 653-7550 • (800) 542-7313
STC 21108.D 486

Company Mull Drilling Co., Inc. Lease & Well No. Curtis "A" No. 1-29
Elevation 2580KB Formation Lansing/Kansas City "I" Effective Pay -- Ft. Ticket No. J2086
Date 7-05-07 Sec. 29 Twp. 15S Range 26W County Gove State Kansas
Test Approved By Kevin L. Kessler Diamond Representative John C. Riedl

Formation Test No. 4 Interval Tested from 4,020 ft. to 4,060 ft. Total Depth 4,060 ft.
Packer Depth 4,015 ft. Size 6 3/4 in. Packer Depth -- ft. Size -- in.
Packer Depth 4,020 ft. Size 6 3/4 in. Packer Depth -- ft. Size -- in.
Depth of Selective Zone Set ft.

Top Recorder Depth (Inside) 4,023 ft. Recorder Number 21108 Cap. 5,000 psi
Bottom Recorder Depth (Outside) 4,057 ft. Recorder Number 11017 Cap. 4,000 psi
Below Straddle Recorder Depth ft. Recorder Number Cap. psi

Drilling Contractor Duke Drilling Co., Inc. - Rig 4 Drill Collar Length -- ft. I.D. -- in.
Mud Type Chemical Viscosity 52 Weight Pipe Length -- ft. I.D. -- in.
Weight 9.0 Water Loss 8.8 cc. Drill Pipe Length 4,000 ft. I.D. 3 1/2 in.
Chlorides 2,800 P.P.M. Test Tool Length 20 ft. Tool Size 3 1/2 - IF in.
Jars: Make Bowen Serial Number Not Run Anchor Length 40 ft. Size 4 1/2 - FH in.
Did Well Flow? No Reversed Out No Surface Choke Size 1 in. Bottom Choke Size 5/8 in.
Main Hole Size 7 7/8 in. Tool Joint Size 4 1/2 - XH in.

Blow: 1st Open: Weak blow. Dead in 6 mins.
2nd Open: No blow.

Recovered 5 ft. of drilling mud with some oil specks = .071000 bbls.
Recovered ft. of
Recovered ft. of
Recovered ft. of
Recovered ft. of

Remarks

Time Set Packer(s) 8:35 ~~AM~~ P.M. Time Started Off Bottom 10:45 ~~AM~~ P.M. Maximum Temperature 114°
Initial Hydrostatic Pressure (A) 1927 P.S.I.
Initial Flow Period Minutes 10 (B) 32 P.S.I. to (C) 36 P.S.I.
Initial Closed In Period Minutes 30 (D) 1060 P.S.I.
Final Flow Period Minutes 30 (E) 34 P.S.I. to (F) 40 P.S.I.
Final Closed In Period Minutes 60 (G) 315 P.S.I.
Final Hydrostatic Pressure (H) 1920 P.S.I.

GENERAL INFORMATION

Client Information:

Company: MULL DRILLING CO. INC.

Contact: ERNIE MORRISON

Phone: Fax: e-mail:

Site Information:

Contact: KEVIN KESSLER

Phone: Fax: e-mail:

Well Information:

Name: CURTIS "A" #1-29

Operator: MULL DRILLING CO. INC.

Location-Downhole: DST #4 4020 TO 4060

Location-Surface: S29/15S/26W GOVE COUNTY

Test Information:

Company: DIAMOND TESTING

Representative: JOHN RIEDL

Supervisor: KEVIN KESSLER

Test Type: CONVENTIONAL Job Number: D486

Test Unit: 2

Start Date: 2007/07/05 Start Time: 19:05:00

End Date: 2007/07/06 End Time: 00:20:00

Report Date: 2007/07/06 Prepared By: JOHN RIEDL

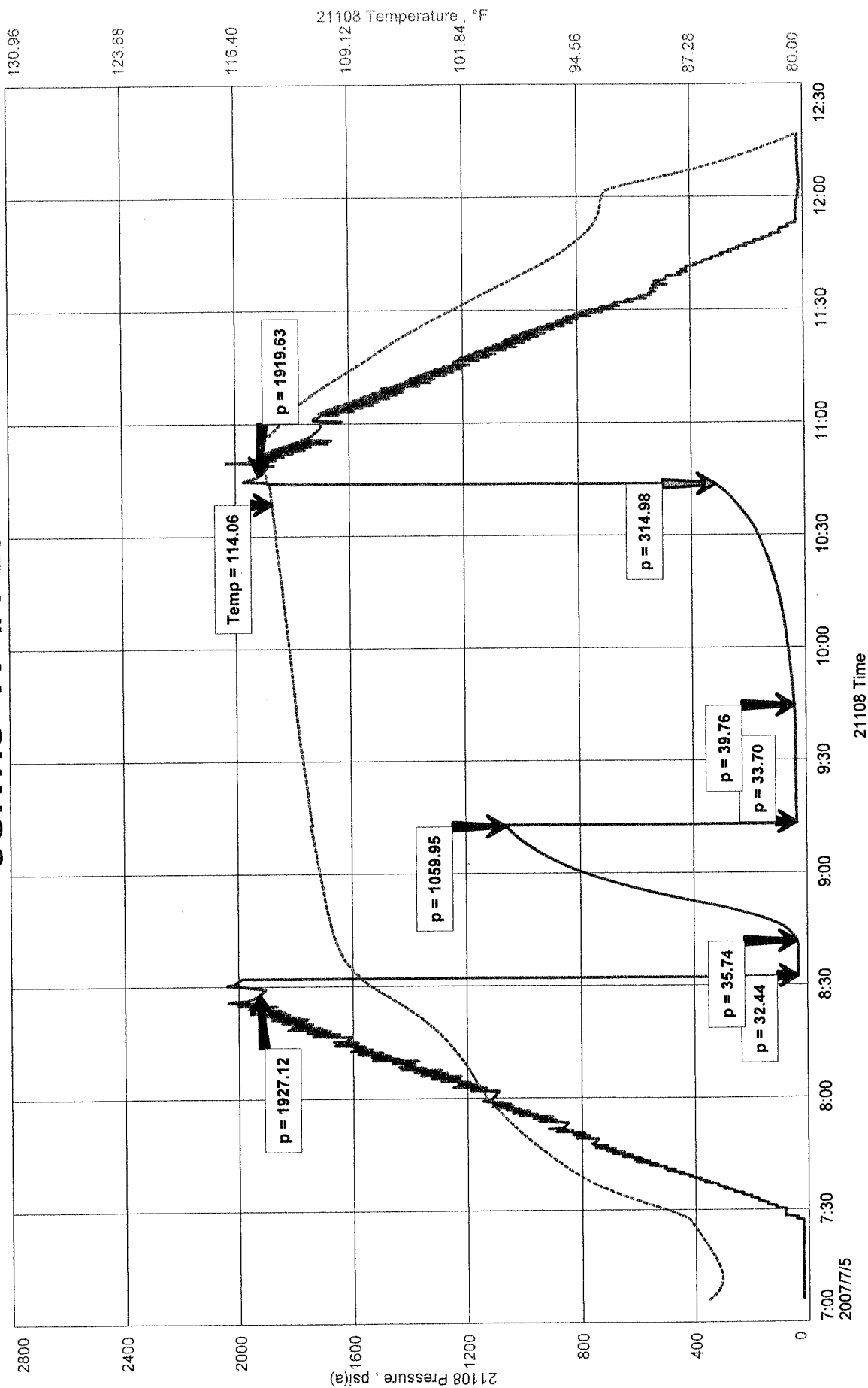
Remarks: Qualified By: KEVIN KESSLER

RECOVERY: 5' OIL SPKED MUD

CURTIS "A" #1-29
 Formation: LKC "I"
 Job Number: D486

MULL DRILLING CO. INC.
 DST #4 4020 TO 4060
 Start Test Date: 2007/07/05
 Final Test Date: 2007/07/06

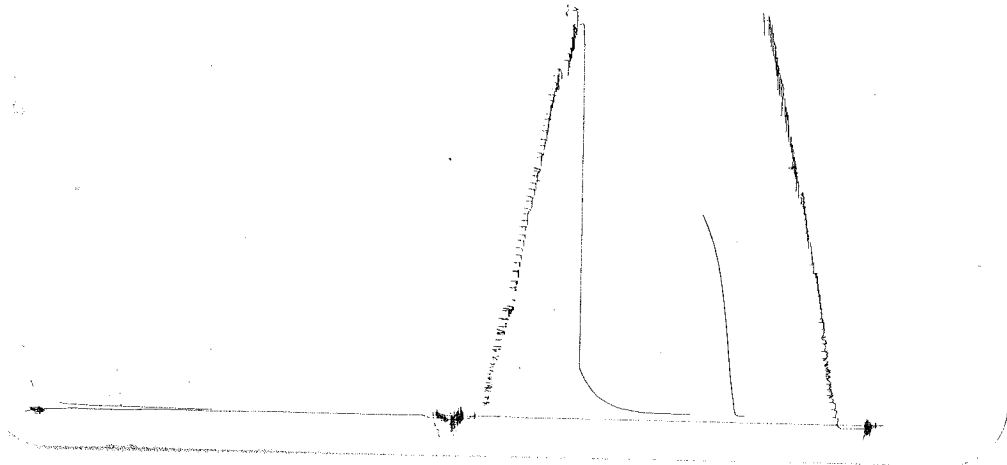
CURTIS "A" #1-29



MULL
CURTIS #1-24

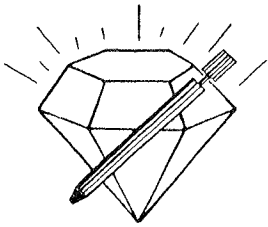
DST #14

ROCKHORN
OVSID



This is an actual photograph of recorder chart.

POINT	PRESSURE Elec.		
	Field Reading	Office Reading	
(A) Initial Hydrostatic Mud	1927	1927	PSI
(B) First Initial Flow Pressure.....	32	32	PSI
(C) First Final Flow Pressure	36	36	PSI
(D) Initial Closed-in Pressure	1060	1060	PSI
(E) Second Initial Flow Pressure	34	34	PSI
(F) Second Final Flow Pressure.....	40	40	PSI
(G) Final Closed-in Pressure.....	315	315	PSI
(H) Final Hydrostatic Mud	1920	1920	PSI



DIAMOND TESTING

P.O. Box 157
HOISINGTON, KANSAS 67544
(620) 653-7550 • (800) 542-7313
STC 21108.D 487

Company Mull Drilling Co., Inc. Lease & Well No. Curtis "A" No. 1-29
Elevation 2580KB Formation Lansing/Kansas City "K" - "L" Effective Pay -- Ft. Ticket No. J2087
Date 7-06-07 Sec. 29 Twp. 15S Range 26W County Gove State Kansas
Test Approved By Kevin L. Kessler Diamond Representative John C. Riedl

Formation Test No. 5 Interval Tested from 4,095 ft. to 4,160 ft. Total Depth 4,160 ft.
Packer Depth 4,090 ft. Size 6 3/4 in. Packer Depth -- ft. Size -- in.
Packer Depth 4,095 ft. Size 6 3/4 in. Packer Depth -- ft. Size -- in.
Depth of Selective Zone Set ft.

Top Recorder Depth (Inside) 4,098 ft. Recorder Number 21108 Cap. 5,000 psi
Bottom Recorder Depth (Outside) 4,157 ft. Recorder Number 11017 Cap. 4,000 psi
Below Straddle Recorder Depth ft. Recorder Number Cap. psi

Drilling Contractor Duke Drilling Co., Inc. - Rig 4 Drill Collar Length -- ft. I.D. -- in.
Mud Type Chemical Viscosity 48 Weight Pipe Length -- ft. I.D. -- in.
Weight 9.2 Water Loss 9.6 cc. Drill Pipe Length 4,075 ft. I.D. 3 1/2 in.
Chlorides 2,400 P.P.M. Test Tool Length 20 ft. Tool Size 3 1/2 - IF in.
Jars: Make Bowen Serial Number Not Run Anchor Length 65 ft. Size 4 1/2 - FH in.
Did Well Flow? No Reversed Out No Surface Choke Size 1 in. Bottom Choke Size 5/8 in.
Main Hole Size 7 7/8 in. Tool Joint Size 4 1/2 - XH in.

Blow: 1st Open: Weak, 1 in., blow.
2nd Open: Weak, 1/2 in., blow.

Recovered 35 ft. of drilling mud = .497000 bbls. (Grind out: 3%-water; 97%-mud)

Recovered ft. of

Recovered ft. of

Recovered ft. of

Recovered ft. of

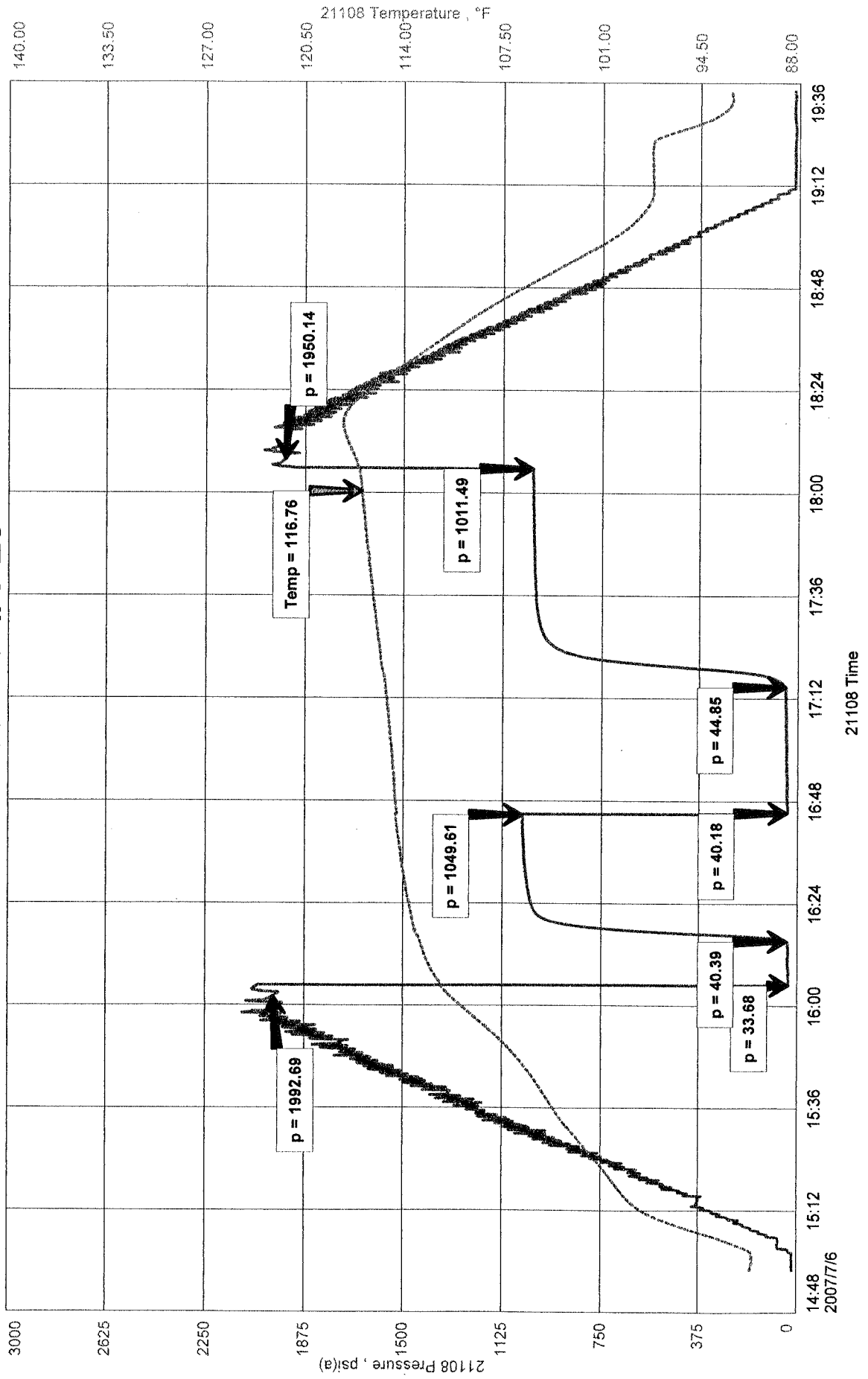
Remarks

Time Set Packer(s) 4:05 ~~XXX~~ P.M. Time Started Off Bottom 6:15 ~~XXXI~~ P.M. Maximum Temperature 117°
Initial Hydrostatic Pressure (A) 1993 P.S.I.
Initial Flow Period Minutes 10 (B) 34 P.S.I. to (C) 40 P.S.I.
Initial Closed In Period Minutes 30 (D) 1050 P.S.I.
Final Flow Period Minutes 30 (E) 40 P.S.I. to (F) 45 P.S.I.
Final Closed In Period Minutes 60 (G) 1011 P.S.I.
Final Hydrostatic Pressure (H) 1950 P.S.I.

MULL DRILLING CO. INC.
 DST #5 4095 TO 4160
 Start Test Date: 2007/07/06
 Final Test Date: 2007/07/06

CURTIS "A" #1-29

CURTIS "A" #1-29
 Formation: LKC "K,L"
 Job Number: D487



MOUL
CURTIS A #1-28

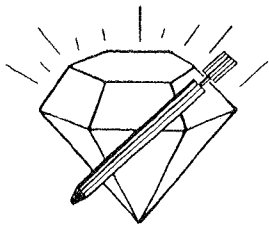
DST # 25

REC # 11178
OUTS 105



This is an actual photograph of recorder chart.

POINT	PRESSURE		Elec. Office Reading	PSI
	Field Reading			
(A) Initial Hydrostatic Mud	1993	1993		PSI
(B) First Initial Flow Pressure	34	34		PSI
(C) First Final Flow Pressure	40	40		PSI
(D) Initial Closed-in Pressure	1050	1050		PSI
(E) Second Initial Flow Pressure	40	40		PSI
(F) Second Final Flow Pressure	45	45		PSI
(G) Final Closed-in Pressure	1011	1011		PSI
(H) Final Hydrostatic Mud	1950	1950		PSI



DIAMOND TESTING
P.O. Box 157
HOISINGTON, KANSAS 67544
(620) 653-7550 • (800) 542-7313
STC 21108.D488

Company Mull Drilling Co., Inc. Lease & Well No. Curtis "A" No. 1-29
Elevation 2580KB Formation Fort Scott Effective Pay Ft. Ticket No. J2088
Date 7-07-07 Sec. 29 Twp. 15S Range 26W County Gove State Kansas
Test Approved By Kevin L. Kessler Diamond Representative John C. Riedl

Formation Test No. 6 Interval Tested from 4,340 ft. to 4,390 ft. Total Depth 4,390 ft.
Packer Depth 4,335 ft. Size 6 3/4 in. Packer Depth ft. Size in.
Packer Depth 4,340 ft. Size 6 3/4 in. Packer Depth ft. Size in.
Depth of Selective Zone Set ft.

Top Recorder Depth (Inside) 4,343 ft. Recorder Number 21108 Cap. 5,000 psi
Bottom Recorder Depth (Outside) 4,387 ft. Recorder Number 11017 Cap. 4,000 psi
Below Straddle Recorder Depth ft. Recorder Number Cap. psi

Drilling Contractor Duke Drilling Co., Inc. - Rig 4 Drill Collar Length ft. I.D. in.
Mud Type Chemical Viscosity 51 Weight Pipe Length ft. I.D. in.
Weight 9.2 Water Loss 8.8 cc. Drill Pipe Length 4,320 ft. I.D. 3 1/2 in.
Chlorides 2,400 P.P.M. Test Tool Length 20 ft. Tool Size 3 1/2 - IE in.
Jars: Make Bowen Serial Number Not Run Anchor Length 50 ft. Size 4 1/2 - FH in.
Did Well Flow? No Reversed Out No Surface Choke Size 1 in. Bottom Choke Size 5/8 in.
Main Hole Size 7 7/8 in. Tool Joint Size 4 1/2 - XH in.

Blow: 1st Open: Weak blow. Dead in 7 mins.
2nd Open: No blow.

Recovered 8 ft. of drilling mud = .113600 bbls.
Recovered ft. of
Recovered ft. of
Recovered ft. of
Recovered ft. of

Remarks

Time Set Packer(s) 7:28 ~~XXX~~ P.M. Time Started Off Bottom 9:38 ~~XXX~~ P.M. Maximum Temperature 121°
Initial Hydrostatic Pressure (A) 2121 P.S.I.
Initial Flow Period Minutes 10 (B) 34 P.S.I. to (C) 36 P.S.I.
Initial Closed In Period Minutes 30 (D) 760 P.S.I.
Final Flow Period Minutes 30 (E) 35 P.S.I. to (F) 37 P.S.I.
Final Closed In Period Minutes 60 (G) 417 P.S.I.
Final Hydrostatic Pressure (H) 2058 P.S.I.

GENERAL INFORMATION

Client Information:

Company: MULL DRILLING CO. INC.

Contact: ERNIE MORRISON

Phone: Fax: e-mail:

Site Information:

Contact: KEVIN KESSLER

Phone: Fax: e-mail:

Well Information:

Name: CURTIS "A" #1-29

Operator: MULL DRILLING CO. INC.

Location-Downhole: DST #6 4340 TO 4390

Location-Surface: S29/15S/26W GOVE COUNTY

Test Information:

Company: DIAMOND TESTING

Representative: JOHN RIEDL

Supervisor: KEVIN KESSLER

Test Type: CONVENTIONAL

Job Number: D488

Test Unit: 2

Start Date: 2007/07/07

Start Time: 17:55:00

End Date: 2007/07/07

End Time: 23:20:00

Report Date: 2007/07/07

Prepared By: JOHN RIEDL

Remarks:

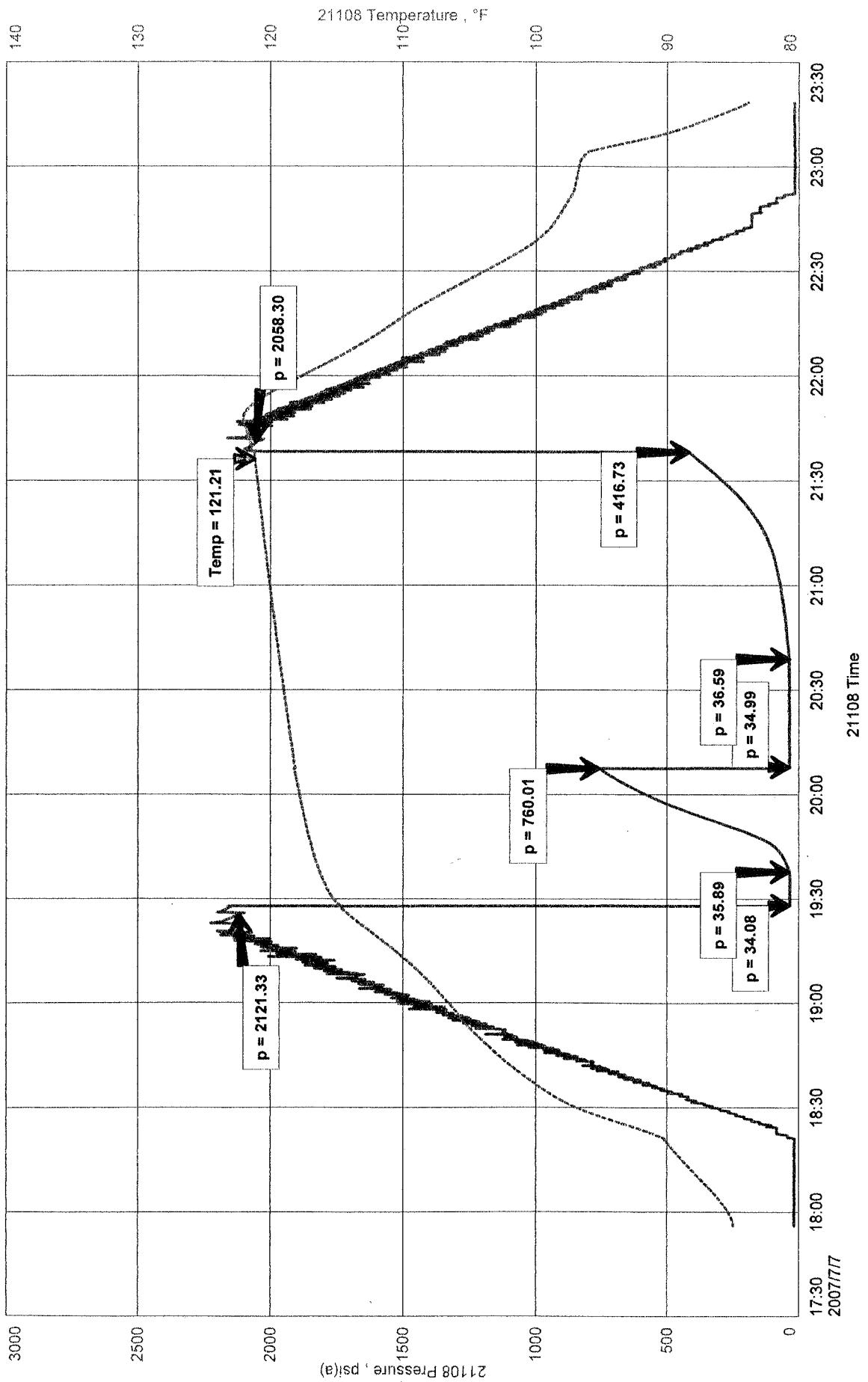
Qualified By: KEVIN KESSLER

RECOVERY: 8' DRILLING MUD

MULL DRILLING CO. INC.
 DST #6 4340 TO 4390
 Start Test Date: 2007/07/07
 Final Test Date: 2007/07/07

CURTIS "A" #1-29
 Formation: FORT SCOTT
 Job Number: D488

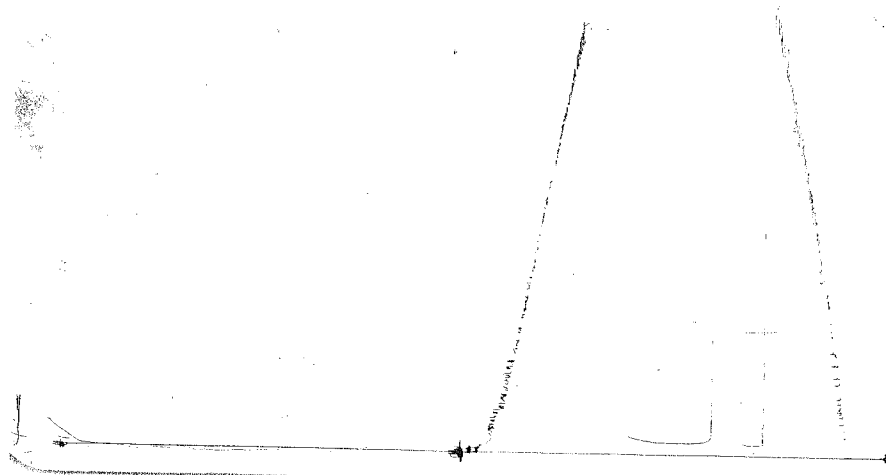
CURTIS "A" #1-29



MULL
CORTIS #1-29

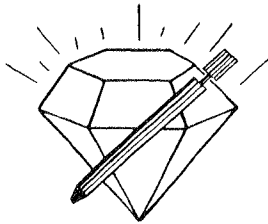
DST #6

ROC # 1001
OUTSIDE



This is an actual photograph of recorder chart.

POINT	PRESSURE		Elec. Office Reading	PSI
	Field Reading			
(A) Initial Hydrostatic Mud	2121	2121		PSI
(B) First Initial Flow Pressure	34	34		PSI
(C) First Final Flow Pressure	36	36		PSI
(D) Initial Closed-in Pressure	760	760		PSI
(E) Second Initial Flow Pressure	35	35		PSI
(F) Second Final Flow Pressure	37	37		PSI
(G) Final Closed-in Pressure	417	417		PSI
(H) Final Hydrostatic Mud	2058	2058		PSI



DIAMOND TESTING

P.O. Box 157
HOISINGTON, KANSAS 67544
(620) 653-7550 • (800) 542-7313
STC 21108.D489

Company Mull Drilling Co., Inc. Lease & Well No. Curtis "A" No. 1-29
Elevation 2580KB Formation Mississippi Effective Pay -- Ft. Ticket No. J2089
Date 7-08-07 Sec. 29 Twp. 15S Range 26W County Gove State Kansas
Test Approved By Kevin L. Kessler Diamond Representative John C. Riedl

Formation Test No. 7 Interval Tested from 4,370 ft. to 4,477 ft. Total Depth 4,477 ft.
Packer Depth 4,365 ft. Size 6 3/4 in. Packer Depth -- ft. Size -- in.
Packer Depth 4,370 ft. Size 6 3/4 in. Packer Depth -- ft. Size -- in.
Depth of Selective Zone Set ft.

Top Recorder Depth (Inside) 4,373 ft. Recorder Number 21108 Cap. 5,000 psi
Bottom Recorder Depth (Outside) 4,474 ft. Recorder Number 11017 Cap. 4,000 psi
Below Straddle Recorder Depth ft. Recorder Number Cap. psi

Drilling Contractor Duke Drilling Co., Inc. - Rig 4 Drill Collar Length -- ft. I.D. -- in.
Mud Type Chemical Viscosity 53 Weight Pipe Length -- ft. I.D. -- in.
Weight 9.2 Water Loss 8.9 cc. Drill Pipe Length 4,350 ft. I.D. 3 1/2 in.
Chlorides 2,400 P.P.M. Test Tool Length 20 ft. Tool Size 3 1/2 - IF in.
Jars: Make Bowen Serial Number Not Run Anchor Length 107 ft. Size 4 1/2 - FH in.
Did Well Flow? No Reversed Out No Surface Choke Size 1 in. Bottom Choke Size 5/8 in.
Main Hole Size 7 7/8 in. Tool Joint Size 4 1/2 - XH in.

Blow: 1st Open: Fair, 5 in., blow. No blow back during shut-in.
2nd Open: Strong blow. Off bottom of bucket in 35 mins. No blow back during shut-in.

Recovered 20 ft. of gas in pipe
Recovered 5 ft. of free oil = .071000 bbls.
Recovered 225 ft. of oil & water cut mud = 3.195000 bbls. (Grind out: 15%-oil; 10%-water; 75%-mud) Chlorides: 6,000 Ppm
Recovered 230 ft. of TOTAL FLUID = 3.266000 bbls.
Recovered ft. of
Remarks

Time Set Packer(s) 2:25 ~~XXX~~ P.M. Time Started Off Bottom 6:05 ~~XXX~~ P.M. Maximum Temperature 125°
Initial Hydrostatic Pressure (A) 2156 P.S.I.
Initial Flow Period Minutes 10 (B) 36 P.S.I. to (C) 57 P.S.I.
Initial Closed In Period Minutes 30 (D) 1196 P.S.I.
Final Flow Period Minutes 60 (E) 65 P.S.I. to (F) 158 P.S.I.
Final Closed In Period Minutes 120 (G) 1192 P.S.I.
Final Hydrostatic Pressure (H) 2063 P.S.I.

GENERAL INFORMATION

Client Information:

Company: MULL DRILLING CO. INC.

Contact: ERNIE MORRISON

Phone: Fax: e-mail:

Site Information:

Contact: KEVIN KESSLER

Phone: Fax: e-mail:

Well Information:

Name: CURTIS "A" #1-29

Operator: MULL DRILLING CO. INC.

Location-Downhole: DST #7 4370 TO 4477

Location-Surface: S29/15S/26W GOVE COUNTY

Test Information:

Company: DIAMOND TESTING

Representative: JOHN RIEDL

Supervisor: KEVIN KESSLER

Test Type: CONVENTIONAL

Job Number: D489

Test Unit: 2

Start Date: 2007/07/08

Start Time: 12:43:00

End Date: 2007/07/08

End Time: 20:40:00

Report Date: 2007/07/08

Prepared By: JOHN RIEDL

Qualified By: KEVIN KESSLER

Remarks:

RECOVERY: 20' GAS IN PIPE

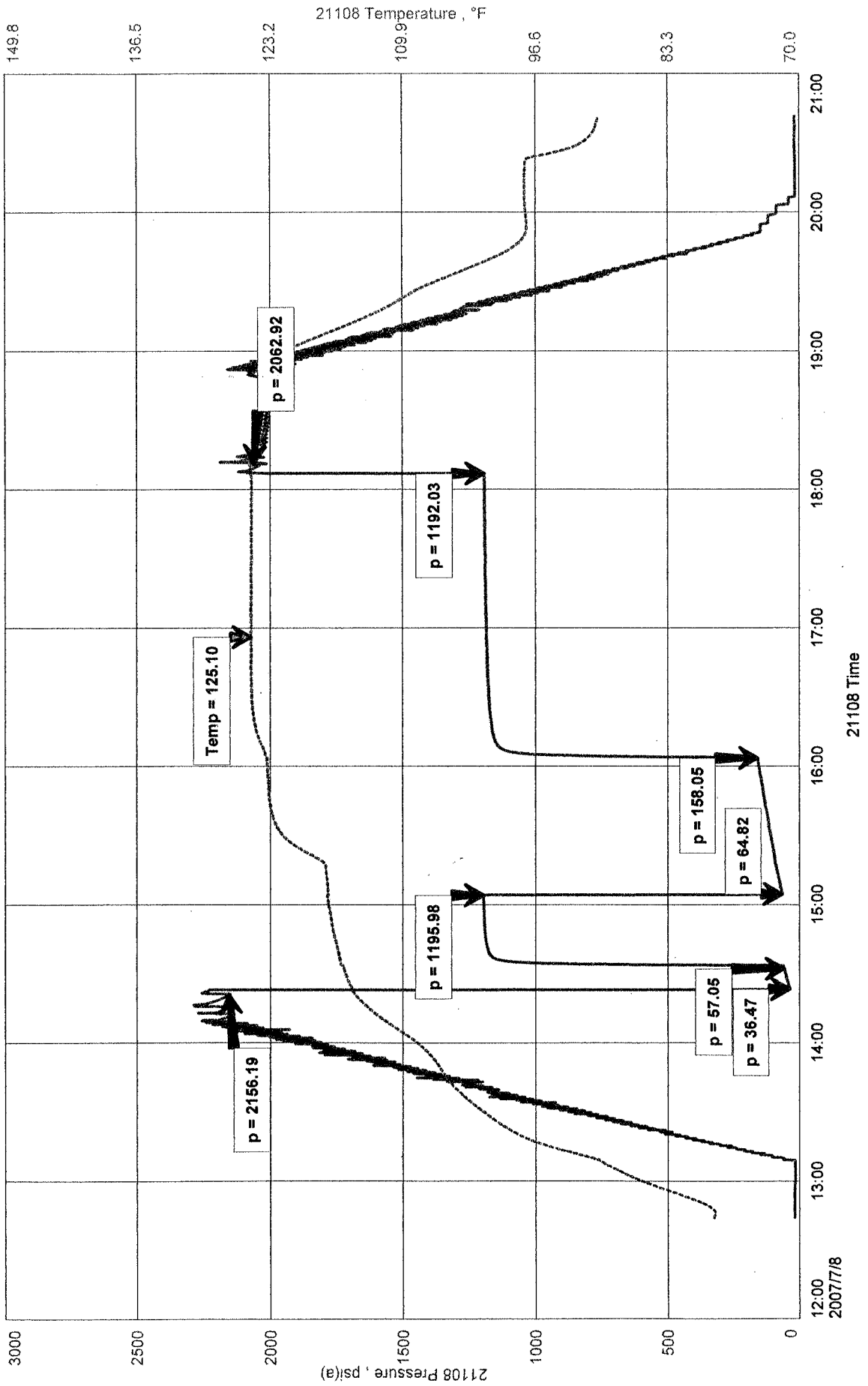
5' FREE OIL

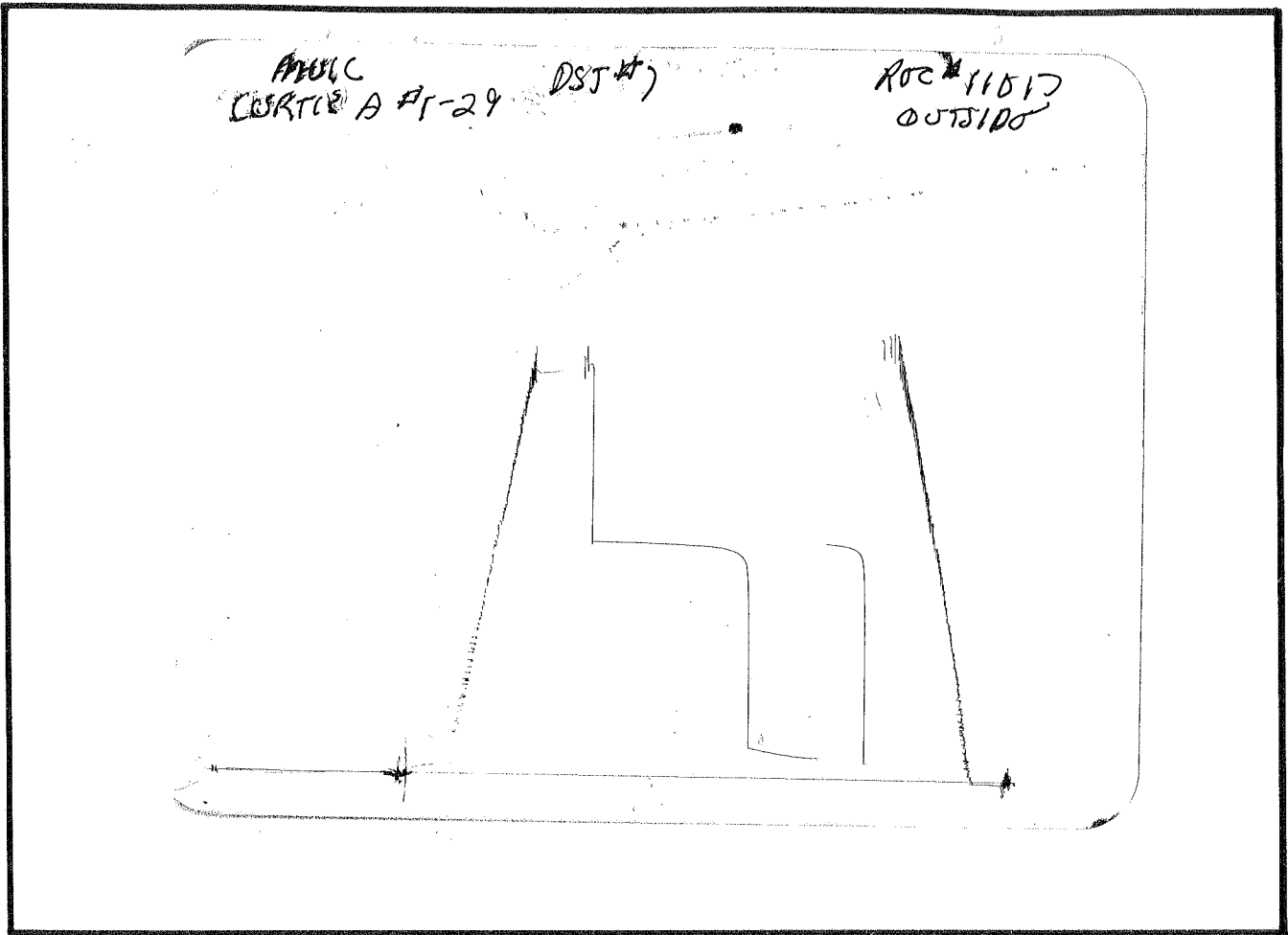
225' O+WCM (15%OIL 10%WATER 75%MUD) CHLORIDES 6,000Ppm

MULL DRILLING CO. INC.
DST #7 4370 TO 4477
Start Test Date: 2007/07/08
Final Test Date: 2007/07/08

CURTIS "A" #1-29
Formation: MISSISSIPPI
Job Number: D489

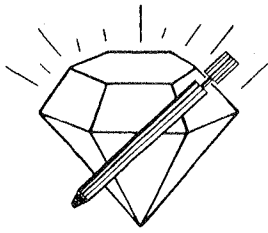
CURTIS "A" #1-29





This is an actual photograph of recorder chart.

POINT	PRESSURE		Elec. Office Reading	PSI
	Field Reading	Office Reading		
(A) Initial Hydrostatic Mud	2156	2156		PSI
(B) First Initial Flow Pressure.....	36	36		PSI
(C) First Final Flow Pressure	57	57		PSI
(D) Initial Closed-in Pressure	1196	1196		PSI
(E) Second Initial Flow Pressure	65	65		PSI
(F) Second Final Flow Pressure.....	158	158		PSI
(G) Final Closed-in Pressure.....	1192	1192		PSI
(H) Final Hydrostatic Mud.....	2063	2063		PSI



DIAMOND TESTING

P.O. Box 157
HOISINGTON, KANSAS 67544
(620) 653-7550 • (800) 542-7313
STC 21108.D 490

Company Mull Drilling Co., Inc. Lease & Well No. Curtis "A" No. 1-29
Elevation 2580KB Formation Mississippi Effective Pay -- Ft. Ticket No. J2090
Date 7-09-07 Sec. 29 Twp. 15S Range 26W County Gove State Kansas
Test Approved By Kevin L. Kessler Diamond Representative John C. Riedl

Formation Test No. 8 Interval Tested from 4,475 ft. to 4,485 ft. Total Depth 4,485 ft.
Packer Depth 4,470 ft. Size 6 3/4 in. Packer Depth -- ft. Size -- in.
Packer Depth 4,475 ft. Size 6 3/4 in. Packer Depth -- ft. Size -- in.
Depth of Selective Zone Set ft.

Top Recorder Depth (Inside) 4,463 ft. Recorder Number 21108 Cap. 5,000 psi
Bottom Recorder Depth (Outside) 4,482 ft. Recorder Number 11017 Cap. 4,000 psi
Below Straddle Recorder Depth ft. Recorder Number Cap. psi

Drilling Contractor Duke Drilling Co., Inc. - Rig 4 Drill Collar Length -- ft. I.D. -- in.
Mud Type Chemical Viscosity 52 Weight Pipe Length -- ft. I.D. -- in.
Weight 9.2 Water Loss 8.9 cc. Drill Pipe Length 4,455 ft. I.D. 3 1/2 in.
Chlorides 2,500 P.P.M. Test Tool Length 20 ft. Tool Size 3 1/2 - IF in.
Jars: Make Bowen Serial Number Not Run Anchor Length 10 ft. Size 4 1/2 - FH in.
Did Well Flow? No Reversed Out No Surface Choke Size 1 in. Bottom Choke Size 5/8 in.
Main Hole Size 7 7/8 in. Tool Joint Size 4 1/2 - XH in.

Blow: 1st Open: Good, 7 in., blow. No blow back during shut-in.
2nd Open: Strong blow. Off bottom of bucket in 15 mins. No blow back during shut-in.

Recovered 20 ft. of gas in pipe
Recovered 100 ft. of clean gassy oil = 1.420000 bbls. (Grind out: 10%-gas; 90%-oil) Gravity: 36 @ 60°
Recovered 500 ft. of water = 7.100000 bbls. (Chlorides: 11,000 Ppm)
Recovered 600 ft. of TOTAL FLUID = 8.520000 bbls.
Recovered ft. of

Remarks

Time Set Packer(s) 4:00 ~~P.M.~~ ^{A.M.} Time Started Off Bottom 7:40 ~~P.M.~~ ^{A.M.} Maximum Temperature 135°
Initial Hydrostatic Pressure (A) 2204 P.S.I.
Initial Flow Period Minutes 10 (B) 36 P.S.I. to (C) 80 P.S.I.
Initial Closed In Period Minutes 30 (D) 1224 P.S.I.
Final Flow Period Minutes 60 (E) 91 P.S.I. to (F) 310 P.S.I.
Final Closed In Period Minutes 120 (G) 1216 P.S.I.
Final Hydrostatic Pressure (H) 2118 P.S.I.

GENERAL INFORMATION

Client Information:

Company: MULL DRILLING CO. INC.

Contact: ERNIE MORRISON

Phone: Fax: e-mail:

Site Information:

Contact: KEVIN KESSLER

Phone: Fax: e-mail:

Well Information:

Name: CURTIS "A" #1-29

Operator: MULL DRILLING CO INC

Location-Downhole: DST #8 4475 TO 4485

Location-Surface: S29/15S/26W GOVE COUNTY

Test Information:

Company: DIAMOND TESTING

Representative: JOHN RIEDL

Supervisor: KEVIN KESSLER

Test Type: CONVENTIONAL

Job Number: D490

Test Unit: 2

Start Date: 2007/07/09

Start Time: 02:33:00

End Date: 2007/07/09

End Time: 10:20:00

Report Date: 2007/07/09

Prepared By: JOHN RIEDL

Remarks:

Qualified By: KEVIN KESSLER

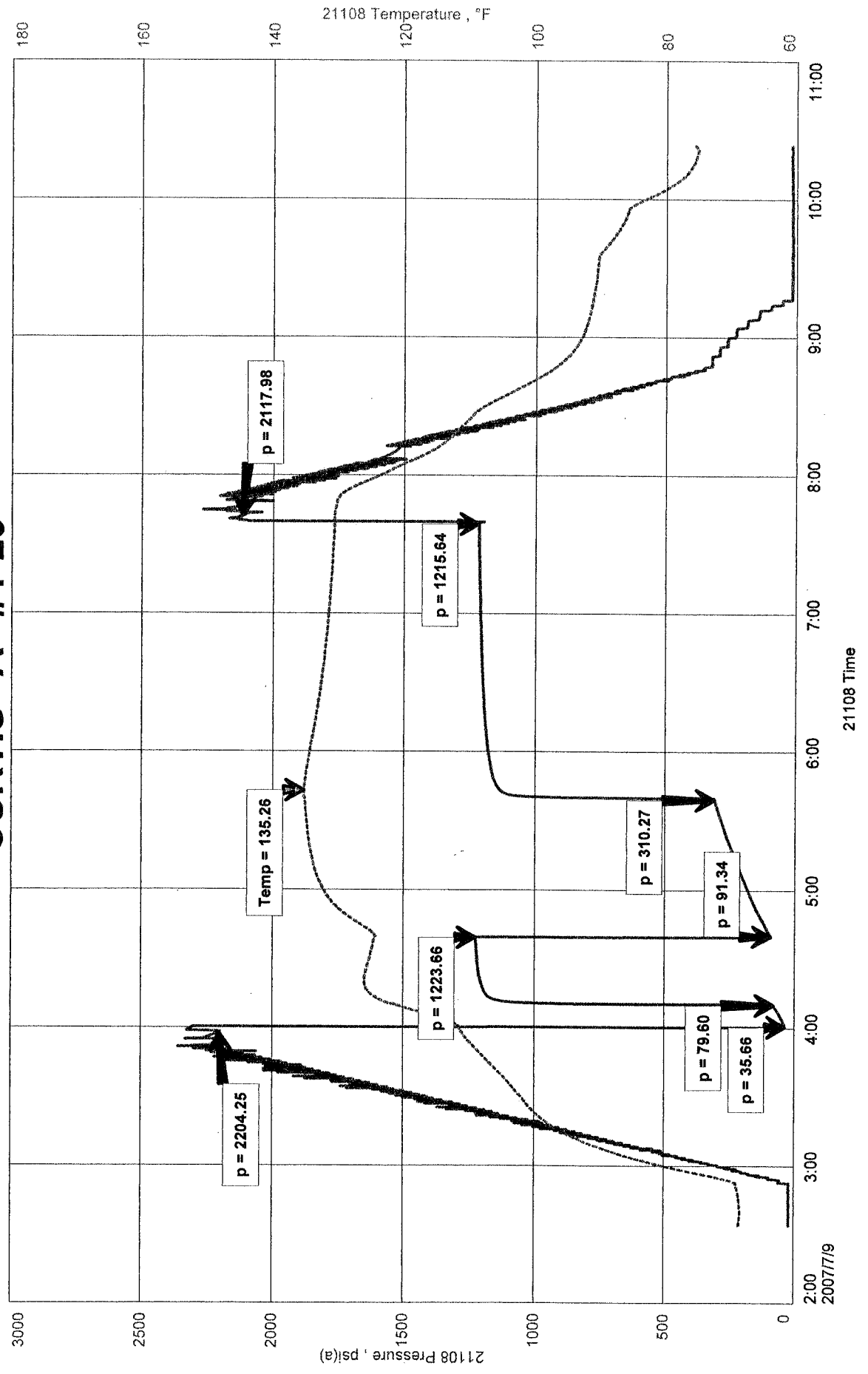
REC: 20' GAS IN PIPE
100' GCO (10%GAS 90%OIL)
500' WATER (CHLORIDES 12,000Ppm)



MULL DRILLING CO. INC.
DST #8 4475 TO 4485
Start Test Date: 2007/07/09
Final Test Date: 2007/07/09

CURTIS "A" #1-29
Formation: MISSISSIPPI
Job Number: D490

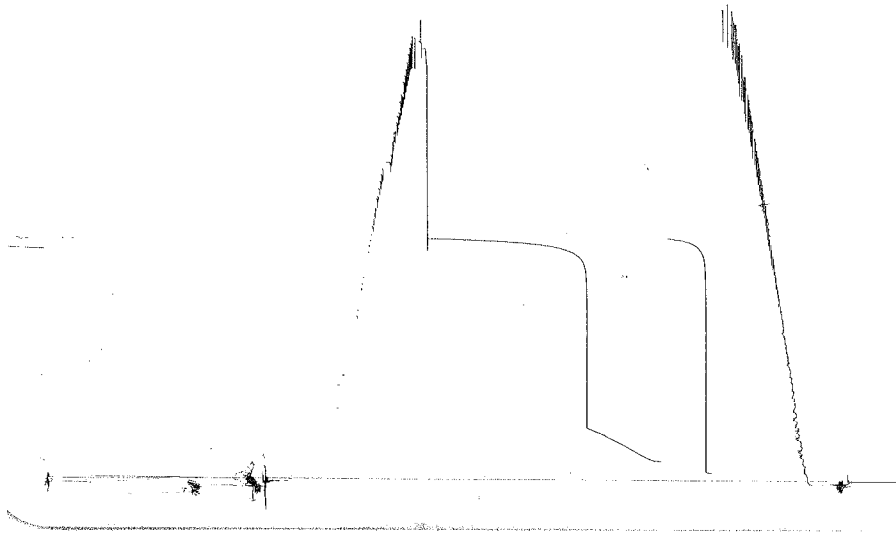
CURTIS "A" #1-29



~~ROLL~~
CURIE'S A #1-29

PSI #8

BOCH#11017
OUTSIDE



This is an actual photograph of recorder chart.

POINT	PRESSURE Elec.		
	Field Reading	Office Reading	
(A) Initial Hydrostatic Mud	2204	2204	PSI
(B) First Initial Flow Pressure.....	36	36	PSI
(C) First Final Flow Pressure'	80	80	PSI
(D) Initial Closed-in Pressure	1224	1224	PSI
(E) Second Initial Flow Pressure	91	91	PSI
(F) Second Final Flow Pressure.....	310	310	PSI
(G) Final Closed-in Pressure.....	1216	1216	PSI
(H) Final Hydrostatic Mud	2118	2118	PSI