

15-063-21779

13-15s-27w

**DIAMOND TESTING**  
P.O. Box 157  
HOISINGTON, KANSAS 67544  
(620) 653-7550 • (800) 542-7313  
STC 30044.D576

Company Mull Drilling Co., Inc. Lease & Well No. Garvey Unit No. 1-13  
Elevation 2467 KB Formation Lansing "H" - "I" Effective Pay -- Ft. Ticket No. J2374  
Date 7-04-09 Sec. 13 Twp. 15S Range 27W County Gove State Kansas  
Test Approved By Kevin L. Kessler Diamond Representative John C. Riedl

Formation Test No. 1 Interval Tested from 3,840 ft. to 3,915 ft. Total Depth 3,915 ft.  
Packer Depth 3,835 ft. Size 6 3/4 in. Packer Depth -- ft. Size -- in.  
Packer Depth 3,840 ft. Size 6 3/4 in. Packer Depth -- ft. Size -- in.  
Depth of Selective Zone Set          ft.

Top Recorder Depth (Inside) 3,843 ft. Recorder Number 30044 Cap. 6,000 psi  
Bottom Recorder Depth (Outside) 3,912 ft. Recorder Number 11017 Cap. 4,000 psi  
Below Straddle Recorder Depth          ft. Recorder Number          Cap.          psi

Drilling Contractor Duke Drilling Co., Inc. - Rig 4 Drill Collar Length -- ft. I.D. -- in.  
Mud Type Chemical Viscosity 48 Weight Pipe Length -- ft. I.D. -- in.  
Weight 8.8 Water Loss 7.6 cc. Drill Pipe Length 3,820 ft. I.D. 3 1/2 in.  
Chlorides 2,400 P.P.M. Test Tool Length 20 ft. Tool Size 3 1/2 - IF in.  
Jars: Make Sterling Serial Number Not Run Anchor Length 75 ft. Size 4 1/2 - FH in.  
Did Well Flow? No Reversed Out No Surface Choke Size 1 in. Bottom Choke Size 5/8 in.  
Main Hole Size 7 7/8 in. Tool Joint Size 4 1/2 - XH in.

Blow: 1st Open: Strong, 7 1/2 in., blow. No blow back during shut-in.  
2nd Open: Strong blow. Off bottom of bucket in 15 mins. No blow back during shut-in.

Recovered 3 ft. of free oil = .042690 bbls.  
Recovered 740 ft. of gassy water = 10.530200 bbls. (Chlorides: 35,000 Ppm)  
Recovered 743 ft. of TOTAL FLUID = 10.572890 bbls.  
Recovered          ft. of           
Recovered          ft. of         

Remarks         

Time Set Packer(s) 12:25 ~~AM~~ P.M. Time Started Off Bottom 4:05 A.M. ~~PM~~ Maximum Temperature 126°  
Initial Hydrostatic Pressure ..... (A) 1893 P.S.I.  
Initial Flow Period ..... Minutes 10 (B) 61 P.S.I. to (C) 110 P.S.I.  
Initial Closed In Period ..... Minutes 30 (D) 1168 P.S.I.  
Final Flow Period ..... Minutes 60 (E) 113 P.S.I. to (F) 375 P.S.I.  
Final Closed In Period ..... Minutes 120 (G) 1172 P.S.I.  
Final Hydrostatic Pressure ..... (H) 1882 P.S.I.

## GENERAL INFORMATION

### Client Information:

Company: MULL DRILLING CO INC

Contact: ERNIE MORRISON

Phone: Fax: e-mail:

### Site Information:

Contact: KEVIN KESSLER

Phone: Fax: e-mail:

### Well Information:

Name: GARVEY UNIT 1-13

Operator:

Location-Downhole: DST #1 3840 TO 3915

Location-Surface: S13/ 15S/ 27W GOVE COUNTY

### Test Information:

Company: DIAMOND TESTING

Representative: JOHN RIEDL

Supervisor: KEVIN KESSLER

Test Type: CONVENTIONAL

Job Number: D576

Test Unit: 2

Start Date: 2009/07/03

Start Time: 22:30:00

End Date: 2009/07/04

End Time: 06:50:00

Report Date: 2009/07/04

Prepared By: JOHN RIEDL

### Remarks:

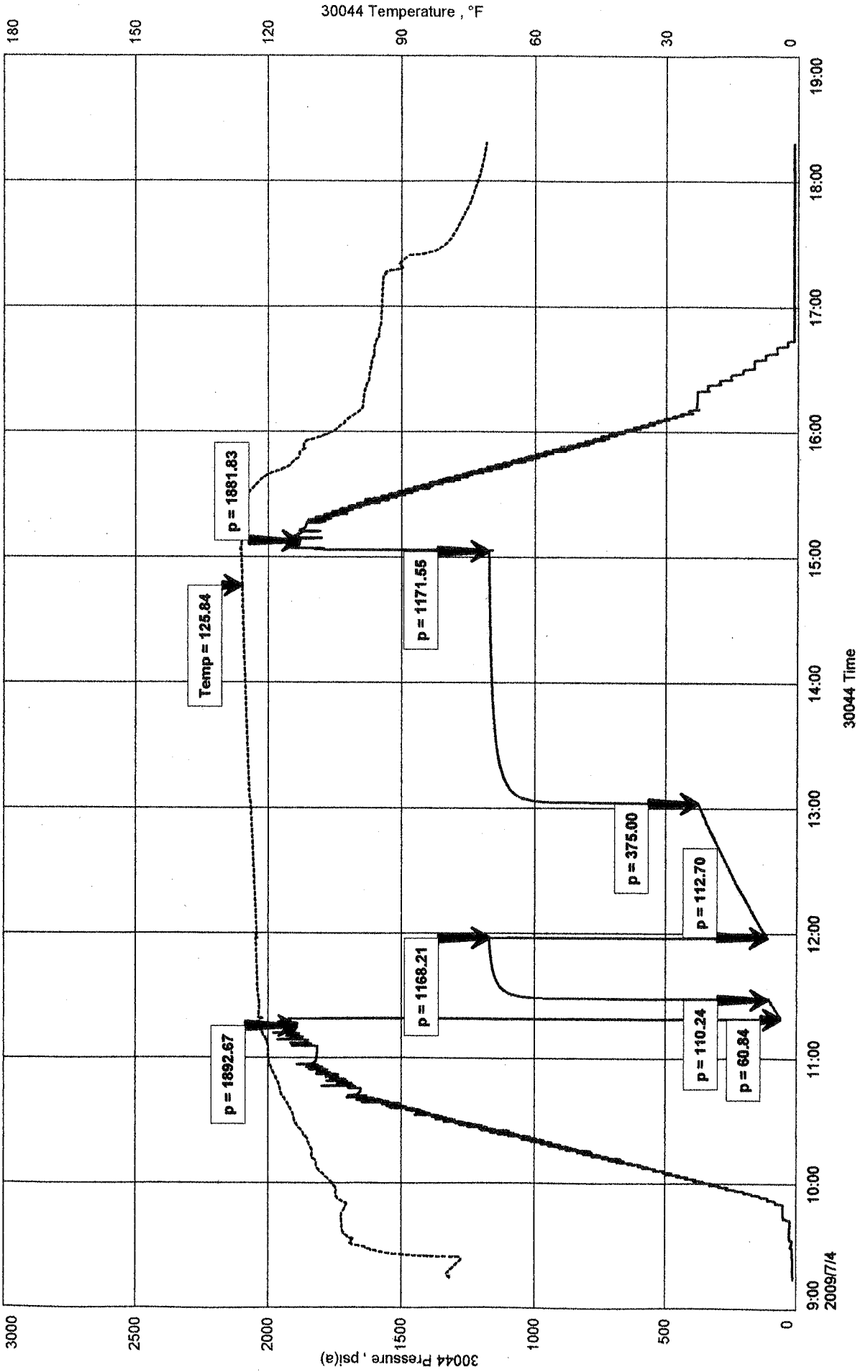
Qualified By: KEVIN KESSLER

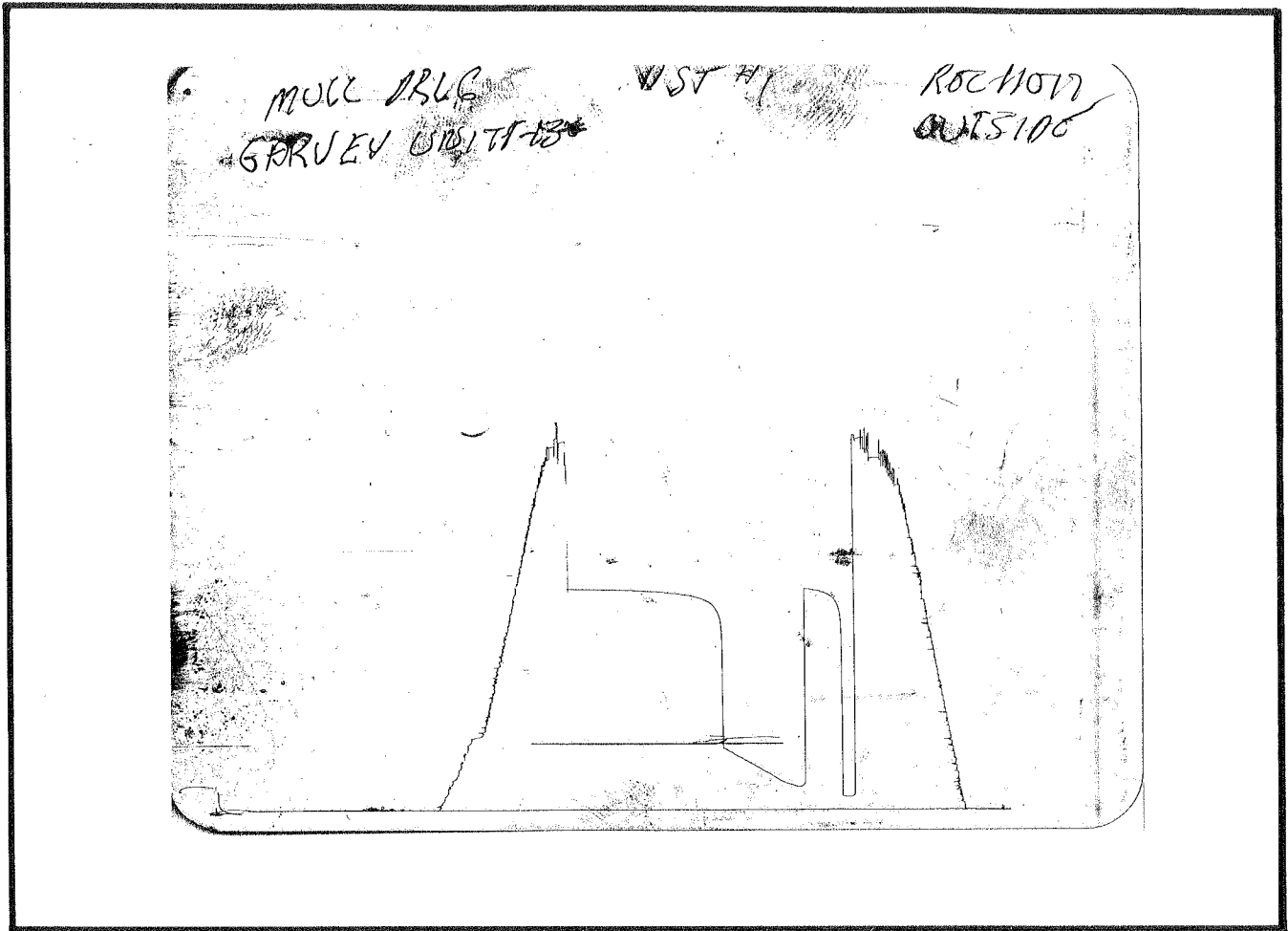
RECOVERY: 3' FREE OIL  
740' GASSY WATER

MULL DRILLING CO INC  
DST #1 3840 TO 3915  
Start Test Date: 2009/07/03  
Final Test Date: 2009/07/04

GARVEY UNIT 1-13  
Formation: LANS "H-H"  
Job Number: D576

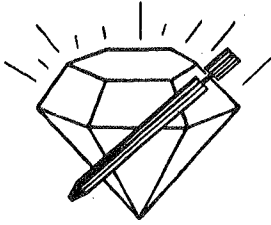
# GARVEY UNIT 1-13





This is an actual photograph of recorder chart.

POINT	PRESSURE		Elec. Office Reading	PSI
	Field Reading			
(A) Initial Hydrostatic Mud	1852	1852		PSI
(B) First Initial Flow Pressure	20	20		PSI
(C) First Final Flow Pressure	68	68		PSI
(D) Initial Closed-in Pressure	1127	1127		PSI
(E) Second Initial Flow Pressure	71	71		PSI
(F) Second Final Flow Pressure	334	334		PSI
(G) Final Closed-in Pressure	1131	1131		PSI
(H) Final Hydrostatic Mud	1839	1839		PSI



# DIAMOND TESTING

P.O. Box 157  
HOISINGTON, KANSAS 67544  
(620) 653-7550 • (800) 542-7313  
STC 30044.D577

Company Mull Drilling Co., Inc. Lease & Well No. Garvey Unit No. 1-13  
Elevation 2467 KB Formation Lansing "J" Effective Pay -- Ft. Ticket No. J2375  
Date 7-04-09 Sec. 13 Twp. 15S Range 27W County Gove State Kansas  
Test Approved By Kevin L. Kessler Diamond Representative John C. Riedl

Formation Test No. 2 Interval Tested from 3,910 ft. to 3,945 ft. Total Depth 3,945 ft.  
Packer Depth 3,905 ft. Size 6 3/4 in. Packer Depth -- ft. Size -- in.  
Packer Depth 3,910 ft. Size 6 3/4 in. Packer Depth -- ft. Size -- in.  
Depth of Selective Zone Set          ft.

Top Recorder Depth (Inside) 3,913 ft. Recorder Number 30044 Cap. 6,000 psi  
Bottom Recorder Depth (Outside) 3,942 ft. Recorder Number 11017 Cap. 4,000 psi  
Below Straddle Recorder Depth          ft. Recorder Number          Cap.          psi

Drilling Contractor Duke Drilling Co., Inc. - Rig 4 Drill Collar Length -- ft. I.D. -- in.  
Mud Type Chemical Viscosity 54 Weight Pipe Length -- ft. I.D. -- in.  
Weight 9.1 Water Loss 8.0 cc. Drill Pipe Length 3,890 ft. I.D. 3 1/2 in.  
Chlorides 2,500 P.P.M. Test Tool Length 20 ft. Tool Size 3 1/2 - IF in.  
Jars: Make Sterling Serial Number Not Run Anchor Length 35 ft. Size 4 1/2 - FH in.  
Did Well Flow? No Reversed Out No Surface Choke Size 1 in. Bottom Choke Size 5/8 in.  
Main Hole Size 7 7/8 in. Tool Joint Size 4 1/2 - XH in.

Blow: 1st Open: Fair, 4 in., blow. No blow back during shut-in.  
2nd Open: Strong blow. Off bottom of bucket in 42 mins. No blow back during shut-in.

Recovered 15 ft. of gas in pipe  
Recovered 2 ft. of free oil = .028460 bbls.  
Recovered 160 ft. of water = 2.276800 bbls. (Chlorides: 42,000 Ppm)  
Recovered 162 ft. of TOTAL FLUID = 2.305260 bbls.  
Recovered          ft. of         

Remarks         

Time Set Packer(s) 4:20 AM P.M. Time Started Off Bottom 8:00 AM P.M. Maximum Temperature 128°  
Initial Hydrostatic Pressure ..... (A) 1898 P.S.I.  
Initial Flow Period ..... Minutes 10 (B) 32 P.S.I. to (C) 40 P.S.I.  
Initial Closed In Period ..... Minutes 30 (D) 576 P.S.I.  
Final Flow Period ..... Minutes 60 (E) 43 P.S.I. to (F) 103 P.S.I.  
Final Closed In Period ..... Minutes 120 (G) 573 P.S.I.  
Final Hydrostatic Pressure ..... (H) 1872 P.S.I.

## GENERAL INFORMATION

### Client Information:

Company: MULL DRILLING CO INC

Contact: ERNIE MORRISON

Phone: Fax: e-mail:

### Site Information:

Contact: KEVIN KESSLER

Phone: Fax: e-mail:

### Well Information:

Name: GARVEY UNIT-13

Operator: MULL DRILLING CO INC

Location-Downhole: DST#2 3910 TO 3945

Location-Surface: S13/ 15S/ 27W GOVE COUNTY

### Test Information:

Company: DIAMOND TESTING

Representative: JOHN RIEDL

Supervisor: KEVIN KESSLER

Test Type: CONVENTIONAL

Job Number: D577

Test Unit: 2

Start Date: 2009/07/04

Start Time: 15:50:00

End Date: 2009/07/04

End Time: 22:00:00

Report Date:

Prepared By:

### Remarks:

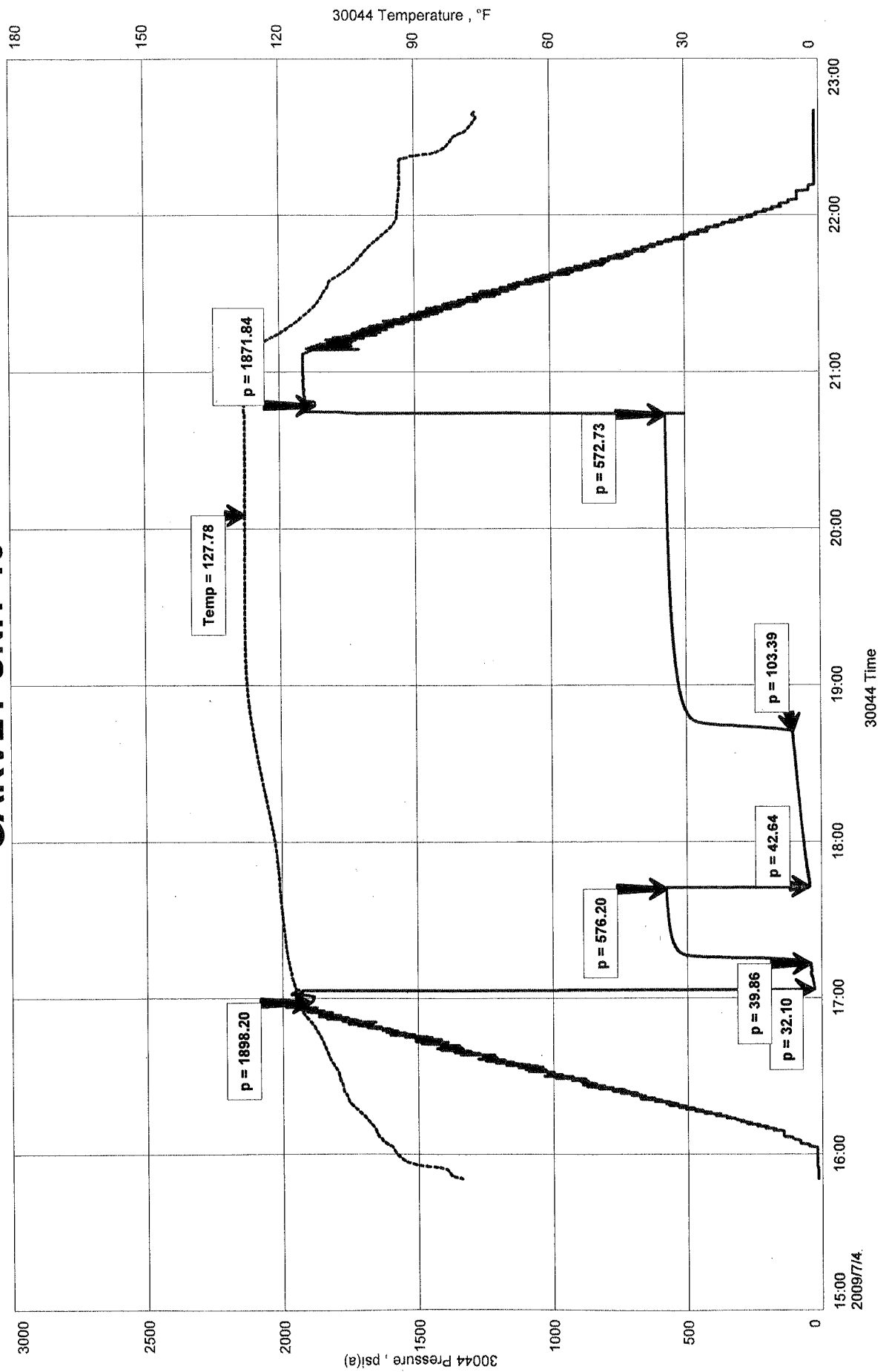
Qualified By:

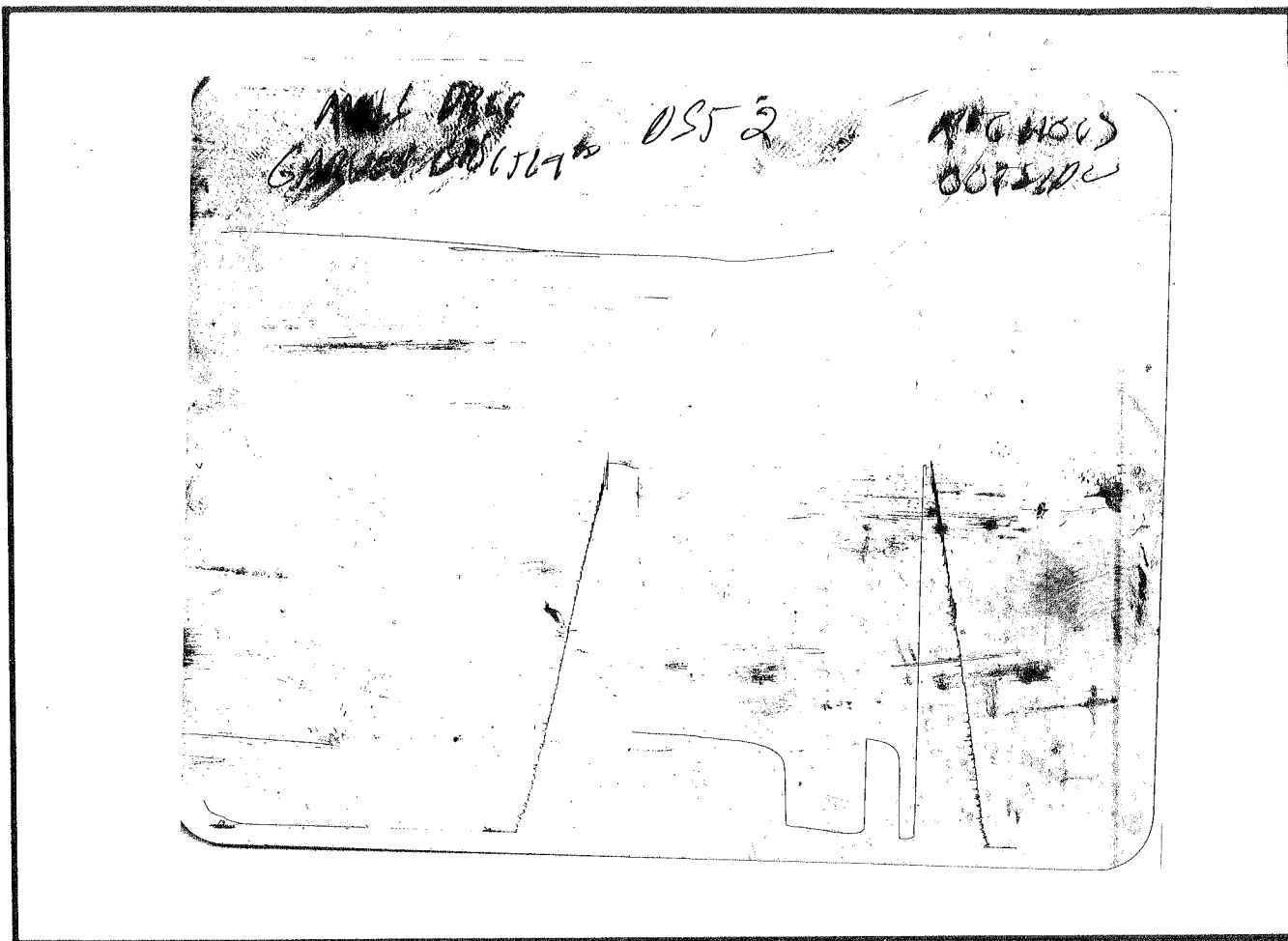
RECOVERY: 15' GAS IN PIPE  
2' FREE OIL  
160' WATER CHLORIDES 42,000 Ppm

GARVEY UNIT-13  
Formation: LANSING "J"  
Job Number: D577

MULL DRILLING CO INC  
DST#2 3910 TO 3945  
Start Test Date: 2009/07/04  
Final Test Date: 2009/07/04

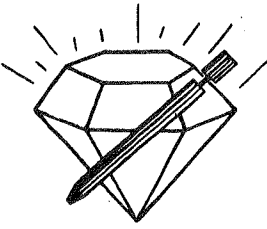
# GARVEY UNIT-13





This is an actual photograph of recorder chart.

POINT	PRESSURE		Elec. Office Reading	PSI
	Field Reading			
(A) Initial Hydrostatic Mud	1898	1898		PSI
(B) First Initial Flow Pressure	32	32		PSI
(C) First Final Flow Pressure	40	40		PSI
(D) Initial Closed-in Pressure	576	576		PSI
(E) Second Initial Flow Pressure	43	43		PSI
(F) Second Final Flow Pressure	103	103		PSI
(G) Final Closed-in Pressure	573	573		PSI
(H) Final Hydrostatic Mud	1872	1872		PSI



**DIAMOND TESTING**  
P.O. Box 157  
**HOISINGTON, KANSAS 67544**  
(620) 653-7550 • (800) 542-7313  
STC 30044.D 578

Company Mull Drilling Co., Inc. Lease & Well No. Garvey Unit No. 1-13  
Elevation 2467 KB Formation Fort Scott Effective Pay      Ft. Ticket No. J2376  
Date 7-06-09 Sec. 13 Twp. 15S Range 27W County Gove State Kansas

Test Approved By Kevin L. Kessler Diamond Representative John C. Riedl

Formation Test No. 3 Interval Tested from 4,170 ft. to 4,235 ft. Total Depth 4,235 ft.  
Packer Depth 4,165 ft. Size 6 3/4 in. Packer Depth      ft. Size      in.  
Packer Depth 4,170 ft. Size 6 3/4 in. Packer Depth      ft. Size      in.  
Depth of Selective Zone Set      ft.

Top Recorder Depth (Inside) 4,173 ft. Recorder Number 30044 Cap. 6,000 psi  
Bottom Recorder Depth (Outside) 4,232 ft. Recorder Number 11017 Cap. 4,000 psi  
Below Straddle Recorder Depth      ft. Recorder Number      Cap.      psi

Drilling Contractor Duke Drilling Co., Inc. - Rig 4 Drill Collar Length      ft. I.D.      in.  
Mud Type Chemical Viscosity 50 Weight Pipe Length      ft. I.D.      in.  
Weight 9.3 Water Loss 7.8 cc. Drill Pipe Length 4,150 ft. I.D. 3 1/2 in.  
Chlorides 2,600 P.P.M. Test Tool Length 20 ft. Tool Size 3 1/2 - IF in.  
Jars: Make Sterling Serial Number Not Run Anchor Length 65 ft. Size 4 1/2 - FH in.  
Did Well Flow? No Reversed Out No Surface Choke Size 1 in. Bottom Choke Size 5/8 in.  
Main Hole Size 7 7/8 in. Tool Joint Size 4 1/2 - XH in.

Blow: 1st Open: Weak, 1/4 in., blow. No blow back during shut-in.  
2nd Open: Weak, 1/2 in., blow throughout. No blow back during shut-in.

Recovered 10 ft. of very slightly oil cut mud = .142300 bbls. (Grind out: 2%-oil; 98%-mud) Clean oil in top of tool  
Recovered      ft. of       
Recovered      ft. of       
Recovered      ft. of       
Recovered      ft. of     

Remarks     

Time Set Packer(s) 4:25 ~~XXX~~ A.M. Time Started Off Bottom 6:35 ~~XXX~~ A.M. Maximum Temperature 126°  
Initial Hydrostatic Pressure ..... (A) 2054 P.S.I.  
Initial Flow Period ..... Minutes 10 (B) 25 P.S.I. to (C) 25 P.S.I.  
Initial Closed In Period ..... Minutes 30 (D) 645 P.S.I.  
Final Flow Period ..... Minutes 30 (E) 26 P.S.I. to (F) 27 P.S.I.  
Final Closed In Period ..... Minutes 60 (G) 166 P.S.I.  
Final Hydrostatic Pressure ..... (H) 2017 P.S.I.

## GENERAL INFORMATION

### Client Information:

Company: MULL DRILLING CO INC

Contact: ERNIE MORRISON

Phone: Fax: e-mail:

### Site Information:

Contact: KEVIN KESSLER

Phone: Fax: e-mail:

### Well Information:

Name: GARVEY UNIT 1-13

Operator: MULL DRILLING CO INC

Location-Downhole: DST #3 4170 TO 4235

Location-Surface: S13/ 15S/ 27W GOVE COUNTY

### Test Information:

Company: DIAMOND TESTING

Representative: JOHN RIEDL

Supervisor: KEVIN KESSLER

Test Type: CONVENTIONAL

Job Number: D578

Test Unit: 2

Start Date: 2009/07/06

Start Time: 02:30:00

End Date: 2009/07/06

End Time: 09:20:00

Report Date: 2009/07/06

Prepared By: JOHN RIEDL

### Remarks:

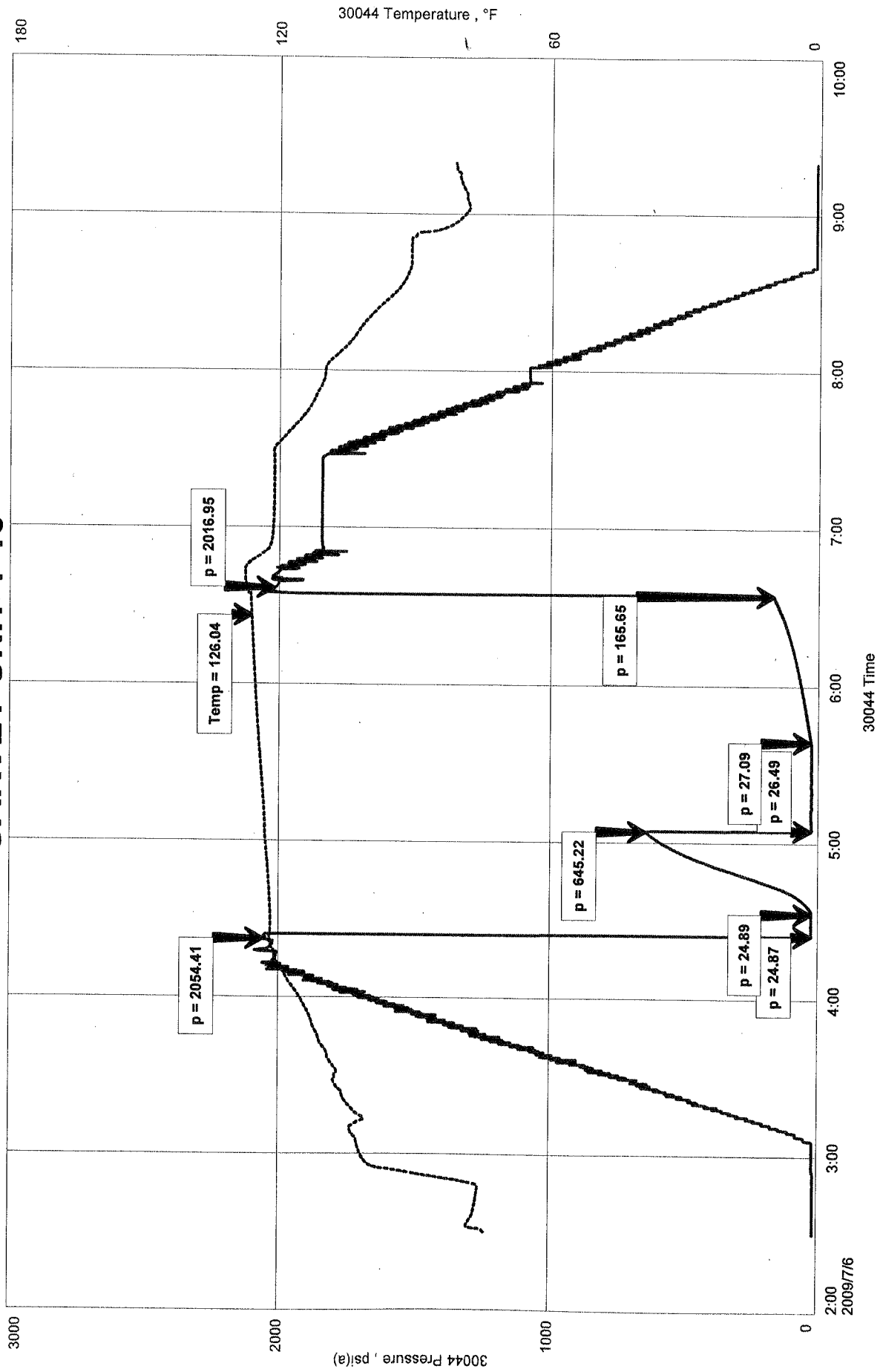
Qualified By: KEVIN KESSLER

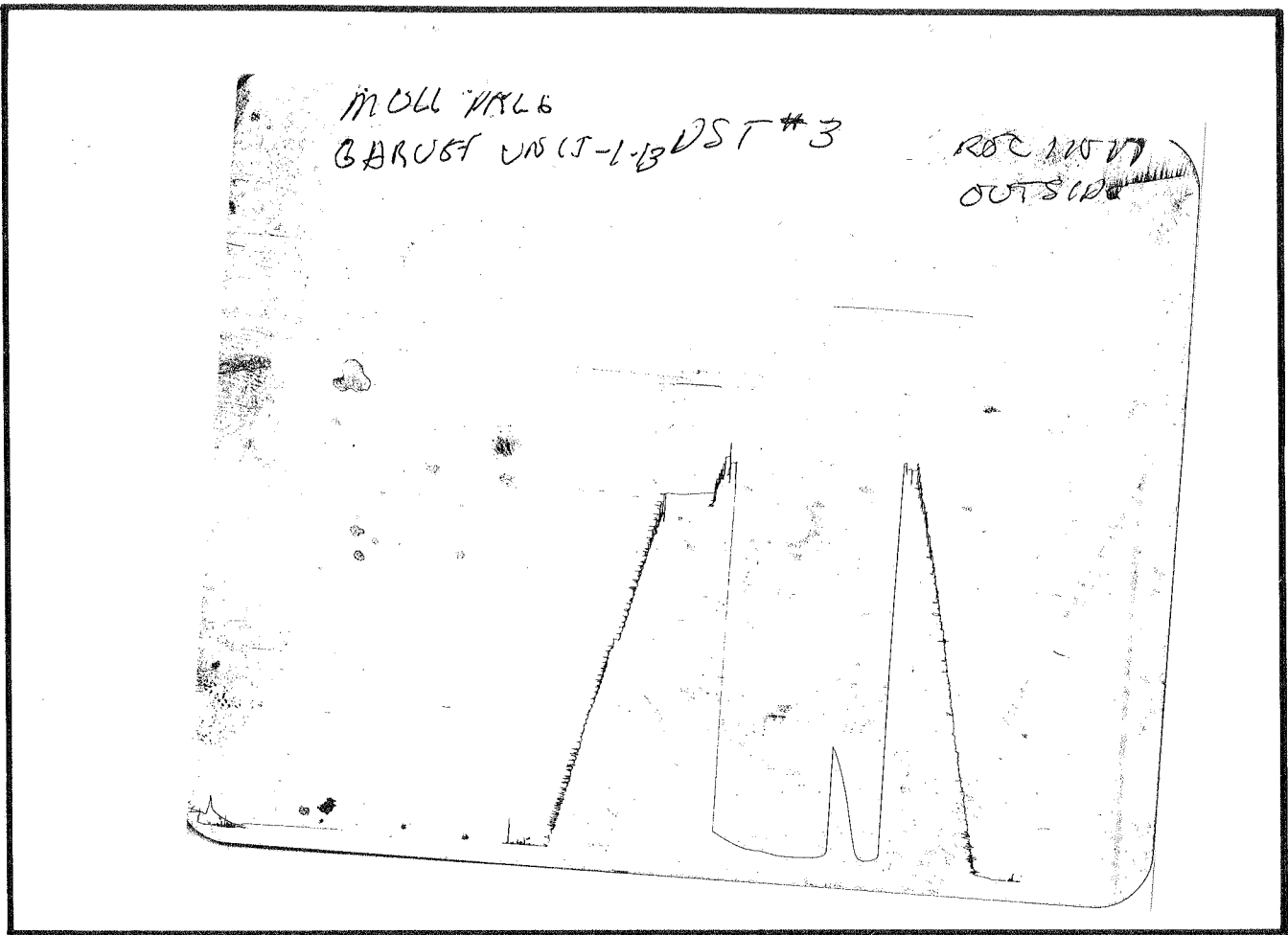
RECOVERY: 10' VERY SLIGHTLY OIL CUT MUD

MULL DRILLING CO INC  
DST #3 4170 TO 4235  
Start Test Date: 2009/07/06  
Final Test Date: 2009/07/06

GARVEY UNIT 1-13  
Formation: FORT SCOTT  
Job Number: D578

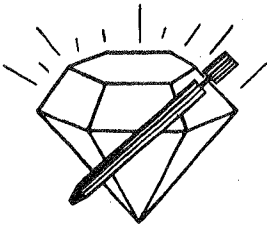
# GARVEY UNIT 1-13





This is an actual photograph of recorder chart.

POINT	PRESSURE		Elec. Office Reading	PSI
	Field Reading			
(A) Initial Hydrostatic Mud .....	2054	2054	2054	PSI
(B) First Initial Flow Pressure.....	25	25	25	PSI
(C) First Final Flow Pressure .....	25	25	25	PSI
(D) Initial Closed-in Pressure .....	645	645	645	PSI
(E) Second Initial Flow Pressure.....	26	26	26	PSI
(F) Second Final Flow Pressure.....	27	27	27	PSI
(G) Final Closed-in Pressure .....	166	166	166	PSI
(H) Final Hydrostatic Mud.....	2017	2017	2017	PSI



**DIAMOND TESTING**  
P.O. Box 157  
**HOISINGTON, KANSAS 67544**  
(620) 653-7550 • (800) 542-7313  
STC 30044.D579

Company Mull Drilling Co., Inc. Lease & Well No. Garvey Unit No. 1-13  
Elevation 2467 KB Formation Mississippi Effective Pay -- Ft. Ticket No. J2377  
Date 7-06-09 Sec. 13 Twp. 15S Range 27W County Gove State Kansas  
Test Approved By Kevin L. Kessler Diamond Representative John C. Riedl

Formation Test No. 4 Interval Tested from 4,250 ft. to 4,320 ft. Total Depth 4,320 ft.  
Packer Depth 4,245 ft. Size 6 3/4 in. Packer Depth -- ft. Size -- in.  
Packer Depth 4,250 ft. Size 6 3/4 in. Packer Depth -- ft. Size -- in.  
Depth of Selective Zone Set          ft.

Top Recorder Depth (Inside) 4,253 ft. Recorder Number 30044 Cap. 6,000 psi  
Bottom Recorder Depth (Outside) 4,317 ft. Recorder Number 11017 Cap. 4,000 psi  
Below Straddle Recorder Depth          ft. Recorder Number          Cap.          psi

Drilling Contractor Duke Drilling Co., Inc. - Rig 4 Drill Collar Length -- ft. I.D. -- in.  
Mud Type Chemical Viscosity 51 Weight Pipe Length -- ft. I.D. -- in.  
Weight 8.6 Water Loss 8.8 cc. Drill Pipe Length 4,230 ft. I.D. 3 1/2 in.  
Chlorides 2,500 P.P.M. Test Tool Length 20 ft. Tool Size 3 1/2 - IF in.  
Jars: Make Sterling Serial Number Not Run Anchor Length 70 ft. Size 4 1/2 - FH in.  
Did Well Flow? No Reversed Out No Surface Choke Size 1 in. Bottom Choke Size 5/8 in.  
Main Hole Size 7 7/8 in. Tool Joint Size 4 1/2 - XH in.

Blow: 1st Open: Weak, 1 in., blow. No blow back during shut-in.  
2nd Open: Weak, 2 in., blow throughout. Weak blow back during shut-in.

Recovered 10 ft. of gas in pipe  
Recovered 30 ft. of clean gassy oil = .426900 bbls. (Grind out: 10%-gas; 90%-oil)  
Recovered 20 ft. of gas & mud cut oil = .284600 bbls. (Grind out: 10%-gas; 20%-mud; 70%-oil) Gravity: 37 @ 60°  
Recovered 50 ft. of TOTAL FLUID = .711500 bbls.  
Recovered          ft. of         

Remarks         

Time Set Packer(s)	<u>11:20</u>	<u>AM.</u> P.M.	Time Started Off Bottom	<u>3:00</u>	<u>AM.</u> PM.	Maximum Temperature	<u>130°</u>
Initial Hydrostatic Pressure			(A)	<u>2061</u>	P.S.I.		
Initial Flow Period	Minutes	<u>10</u>	(B)	<u>25</u>	P.S.I.	to (C)	<u>29</u> P.S.I.
Initial Closed In Period	Minutes	<u>30</u>	(D)	<u>1072</u>	P.S.I.		
Final Flow Period	Minutes	<u>60</u>	(E)	<u>34</u>	P.S.I.	to (F)	<u>41</u> P.S.I.
Final Closed In Period	Minutes	<u>120</u>	(G)	<u>999</u>	P.S.I.		
Final Hydrostatic Pressure			(H)	<u>2035</u>	P.S.I.		

## GENERAL INFORMATION

### Client Information:

Company: MULL DRILLING CO INC

Contact: ERNIE MORRISON

Phone: Fax: e-mail:

### Site Information:

Contact: KEVIN KESSLER

Phone: Fax: e-mail:

### Well Information:

Name: GARVEY UNIT 1-13

Operator: MULL DRILLING CO INC

Location-Downhole: DST #4 4250 TO 4320

Location-Surface: S13/ 15S/ 27S GOVE COUNTY

### Test Information:

Company: DIAMOND TESTING

Representative: JOHN RIEDL

Supervisor: KEVIN KESSLER

Test Type: CONVENTIONAL

Job Number: D579

Test Unit: 2

Start Date: 2009/07/06

Start Time: 21:30:00

End Date: 2009/07/07

End Time: 05:00:00

Report Date: 2009/07/07

Prepared By: JOHN RIEDL

### Remarks:

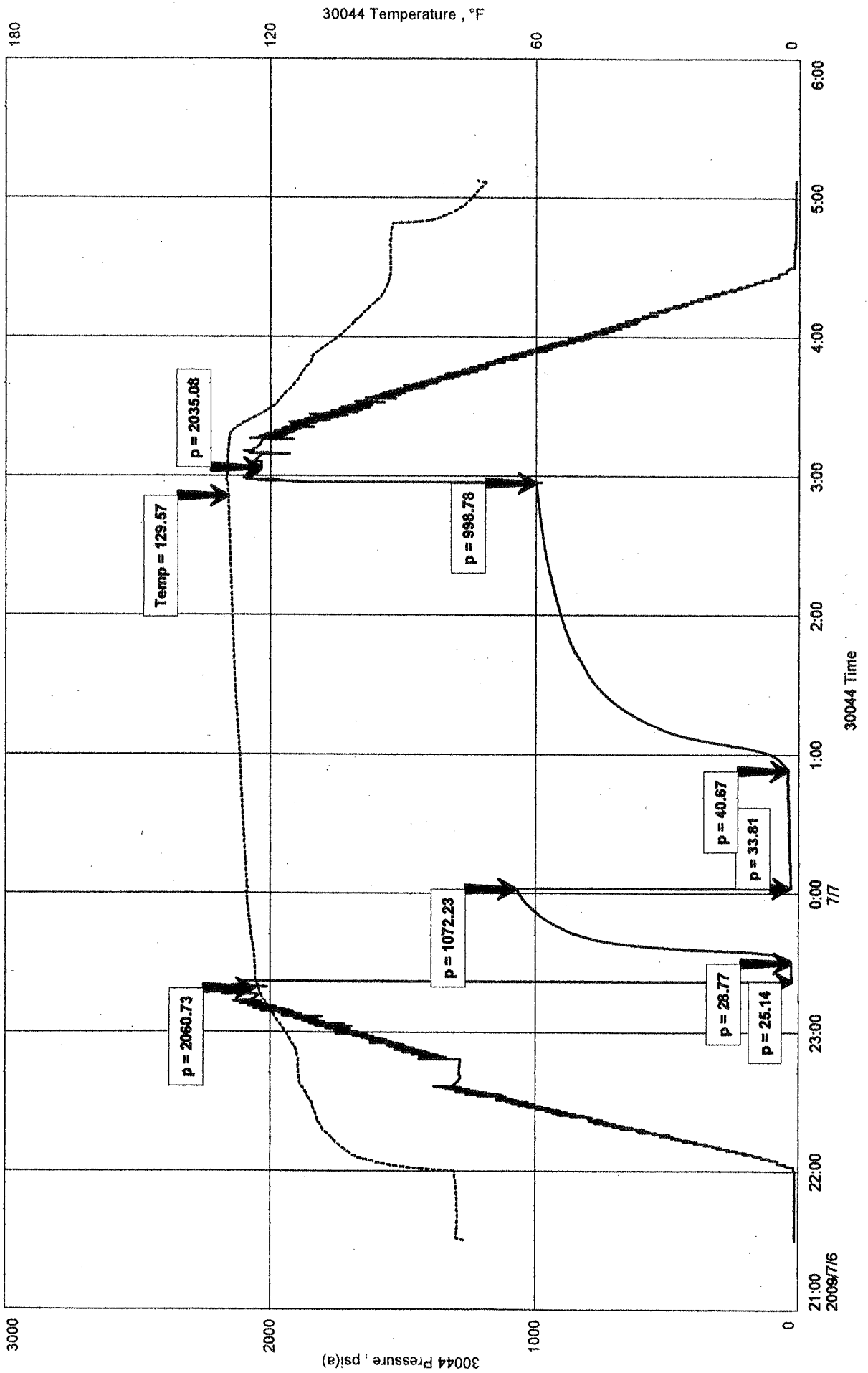
Qualified By: KEVIN KESSLER

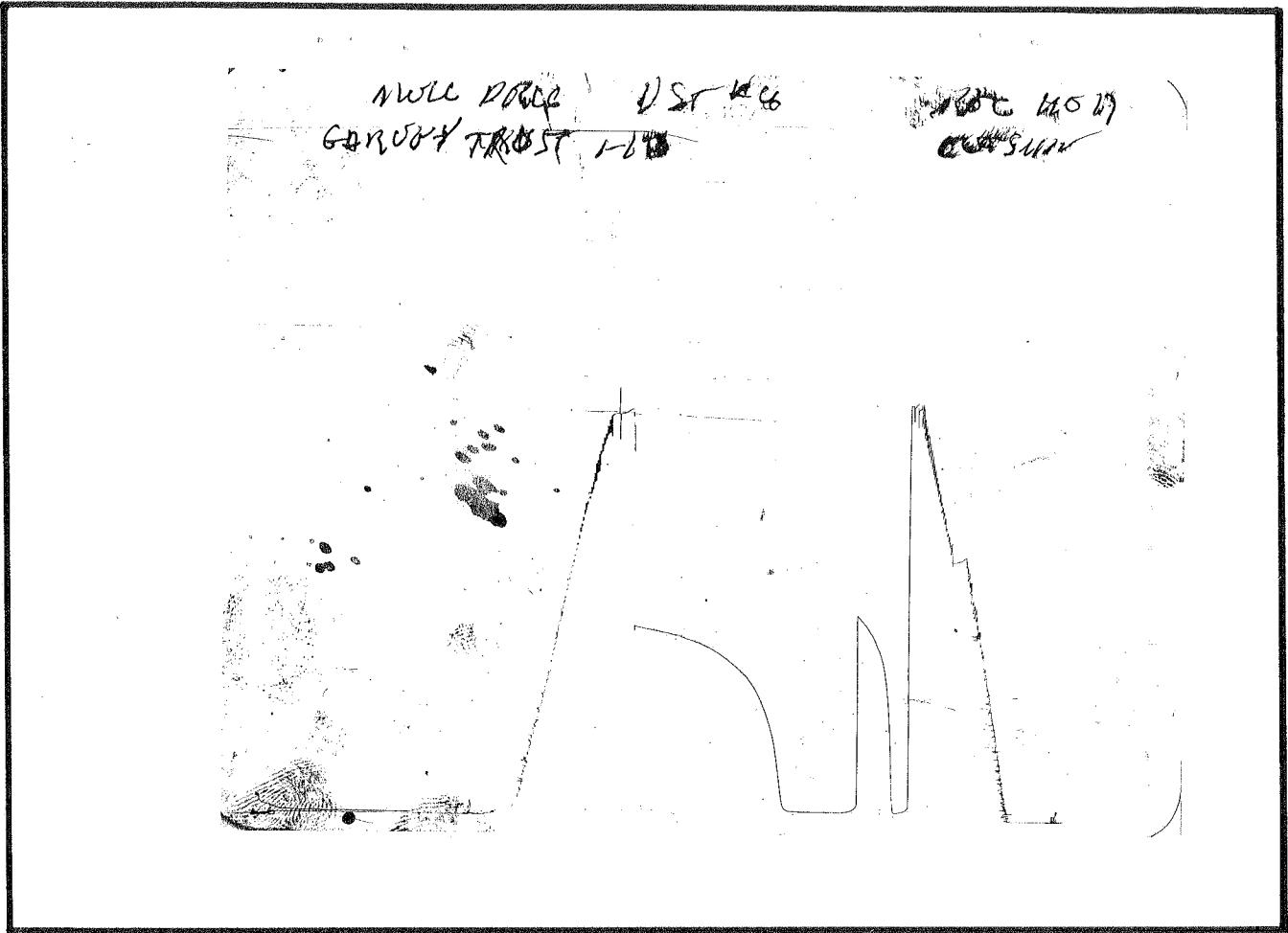
RECOVERY: 10' GAS IN PIPE  
30' CLEAN GASSY OIL  
20' MUD+GAS CUT OIL

GARVEY UNIT 1-13  
 Formation: MISS  
 Job Number: D579

MULL DRILLING CO INC  
 DST #4 4250 TO 4320  
 Start Test Date: 2009/07/06  
 Final Test Date: 2009/07/07

# GARVEY UNIT 1-13





This is an actual photograph of recorder chart.

POINT	PRESSURE		Elec. Office Reading	PSI
	Field Reading			
(A) Initial Hydrostatic Mud .....	2061	2061		PSI
(B) First Initial Flow Pressure .....	25	25		PSI
(C) First Final Flow Pressure .....	29	29		PSI
(D) Initial Closed-in Pressure .....	1072	1072		PSI
(E) Second Initial Flow Pressure .....	34	34		PSI
(F) Second Final Flow Pressure .....	41	41		PSI
(G) Final Closed-in Pressure .....	999	999		PSI
(H) Final Hydrostatic Mud .....	2035	2035		PSI



# DIAMOND TESTING

P.O. Box 157  
HOISINGTON, KANSAS 67544  
(620) 653-7550 • (800) 542-7313  
STC 30044.D580

Company Mull Drilling Co., Inc. Lease & Well No. Garvey Unit No. 1-13

Elevation 2467 KB Formation Mississippi Effective Pay      Ft. Ticket No. J2378

Date 7-07-09 Sec. 13 Twp. 15S Range 27W County Gove State Kansas

Test Approved By Kevin L. Kessler Diamond Representative John C. Riedl

Formation Test No. 5 Interval Tested from 4,320 ft. to 4,330 ft. Total Depth 4,330 ft.

Packer Depth 4,315 ft. Size 6 3/4 in. Packer Depth      ft. Size      in.

Packer Depth 4,320 ft. Size 6 3/4 in. Packer Depth      ft. Size      in.

Depth of Selective Zone Set      ft.

Top Recorder Depth (Inside) 4,323 ft. Recorder Number 30044 Cap. 6,000 psi

Bottom Recorder Depth (Outside) 4,327 ft. Recorder Number 11017 Cap. 4,000 psi

Below Straddle Recorder Depth      ft. Recorder Number      Cap.      psi

Drilling Contractor Duke Drilling Co., Inc. - Rig 4 Drill Collar Length      ft. I.D.      in.

Mud Type Chemical Viscosity 58 Weight Pipe Length      ft. I.D.      in.

Weight 9.0 Water Loss 8.8 cc. Drill Pipe Length 4,300 ft. I.D. 3 1/2 in.

Chlorides 2,400 P.P.M. Test Tool Length 20 ft. Tool Size 3 1/2 - IF in.

Jars: Make Sterling Serial Number Not Run Anchor Length 10 ft. Size 4 1/2 - FH in.

Did Well Flow? No Reversed Out No Surface Choke Size 1 in. Bottom Choke Size 5/8 in.

Main Hole Size 7 7/8 in. Tool Joint Size 4 1/2 - XH in.

Blow: 1st Open: Weak, 1 in., blow. No blow back during shut-in.

2nd Open: Strong blow; slowly building to 8 ins. No blow back during shut-in.

Recovered 40 ft. of gas in pipe

Recovered 50 ft. of clean gassy oil = .711500 bbls. (Grind out: 15%-gas; 85%-oil) Gravity: 38 @ 60°

Recovered 30 ft. of gas & mud cut oil = .426900 bbls. (Grind out: 10%-gas; 35%-mud; 55%-oil)

Recovered 80 ft. of TOTAL FLUID = 1.138400 bbls.

Recovered      ft. of     

Remarks     

Time Set Packer(s) 1:20 AM P.M. Time Started Off Bottom 5:00 AM P.M. Maximum Temperature 134°

Initial Hydrostatic Pressure ..... (A) 2109 P.S.I.

Initial Flow Period ..... Minutes 10 (B) 25 P.S.I. to (C) 28 P.S.I.

Initial Closed In Period ..... Minutes 30 (D) 1271 P.S.I.

Final Flow Period ..... Minutes 60 (E) 29 P.S.I. to (F) 50 P.S.I.

Final Closed In Period ..... Minutes 120 (G) 1280 P.S.I.

Final Hydrostatic Pressure ..... (H) 2074 P.S.I.

## GENERAL INFORMATION

### Client Information:

Company: MULL DRILLING CO INC

Contact: ERNIE MORRISON

Phone: Fax: e-mail:

### Site Information:

Contact: KEVIN KESSLER

Phone: Fax: e-mail:

### Well Information:

Name: GARVEY UNIT 1-13

Operator: MULL DRILLING CO INC

Location-Downhole: DST #5 4320 TO 4330

Location-Surface: S13/ 15S/ 27W GOVE COUNTY

### Test Information:

Company: DIAMOND TESTING

Representative: JOHN RIEDL

Supervisor: KEVIN KESSLER

Test Type: CONVENTIONAL

Job Number: D580

Test Unit: 2

Start Date: 2009/07/07

Start Time: 11:30:00

End Date: 2009/07/07

End Time: 19:00:00

Report Date: 2009/07/07

Prepared By: JOHN RIEDL

### Remarks:

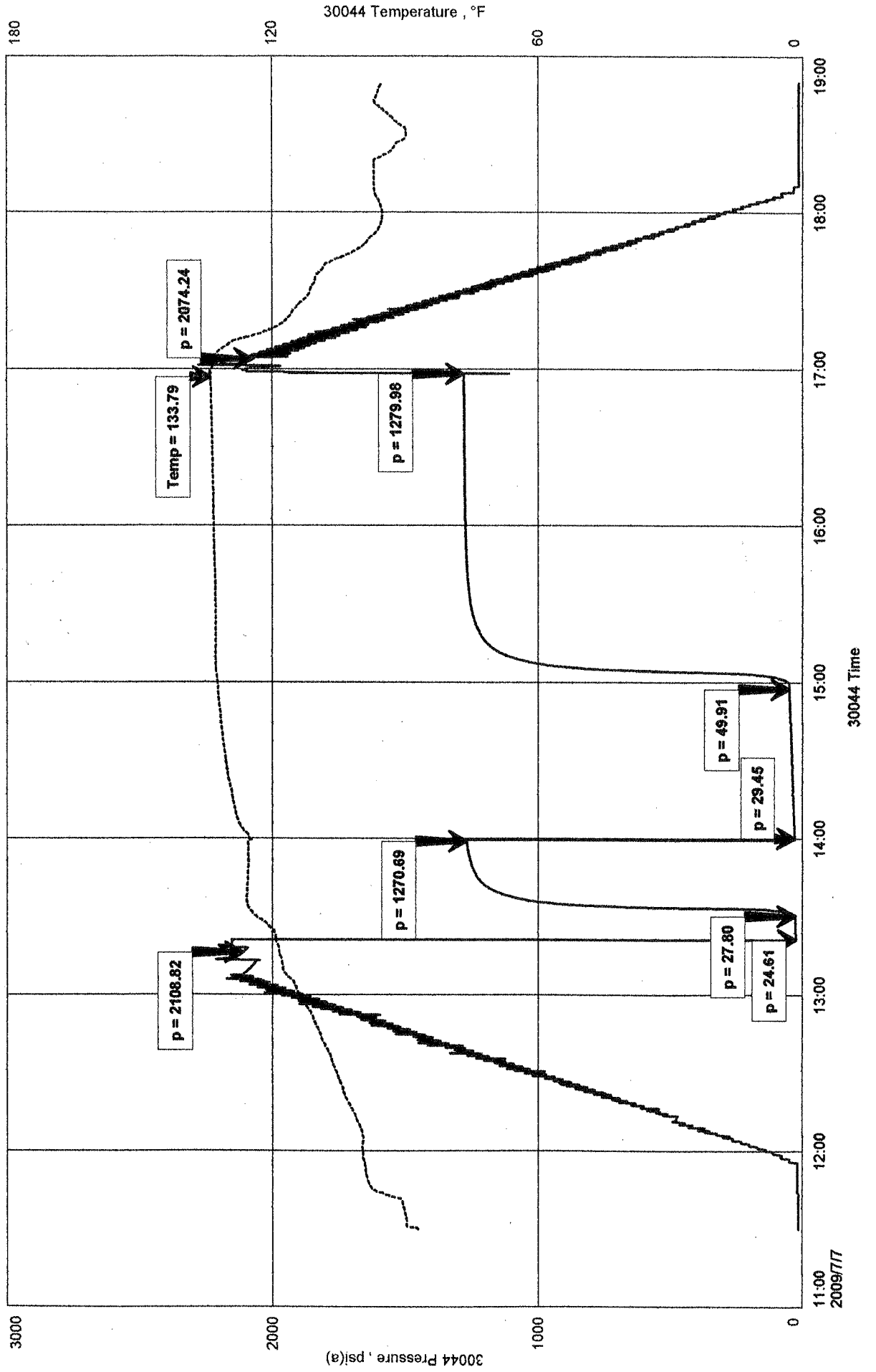
Qualified By: KEVIN KESSLER

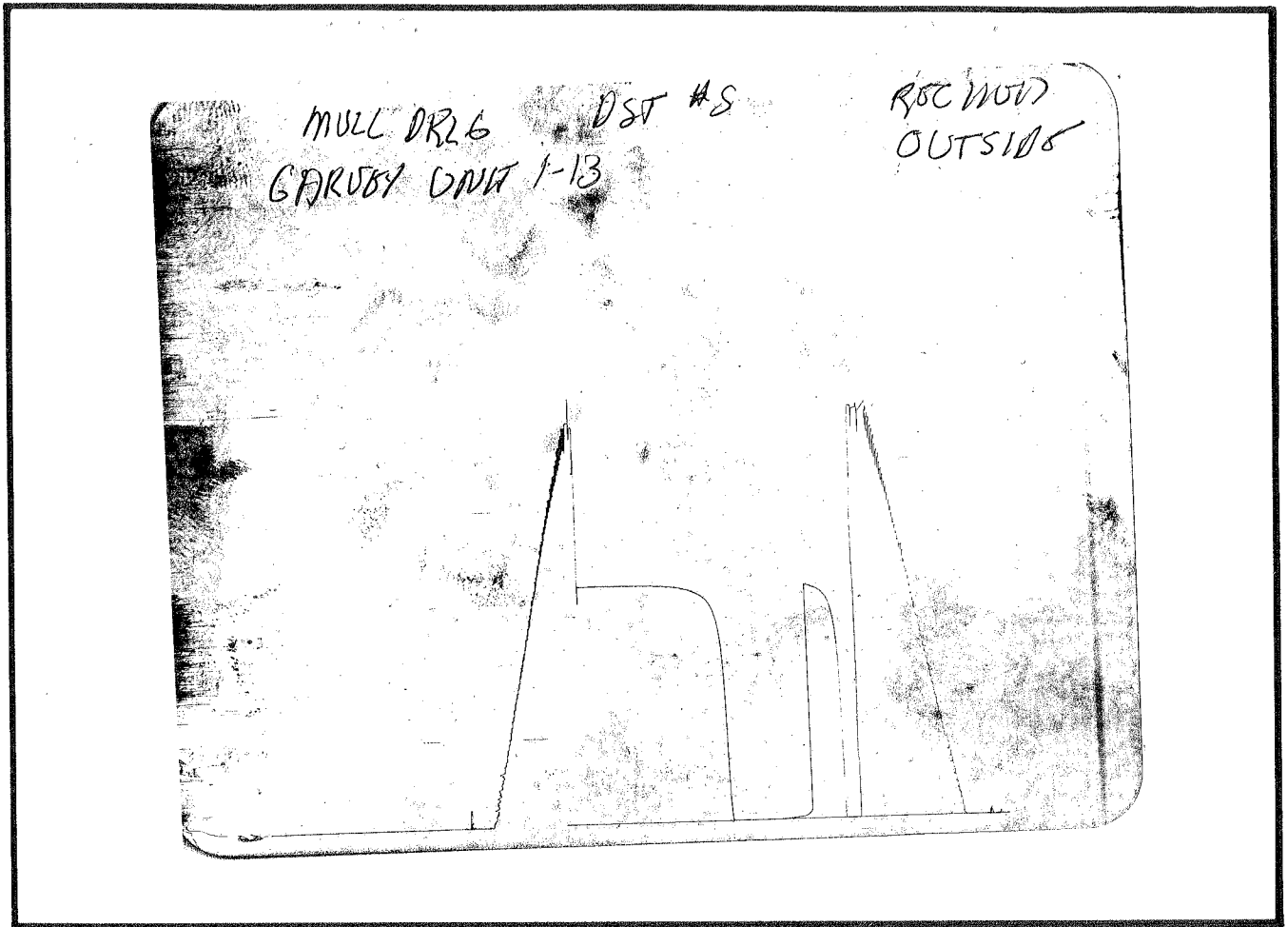
RECOVERY: 40' GAS IN PIPE  
50' CLEAN GASSY OIL  
30' GAS+MUD CUT OIL

GARVEY UNIT 1-13  
 Formation: MISS  
 Job Number: D580

# GARVEY UNIT 1-13

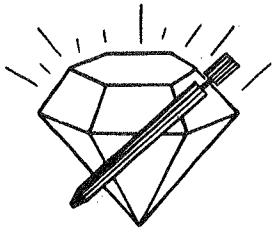
MULL DRILLING CO INC  
 DST #5 4320 TO 4330  
 Start Test Date: 2009/07/07  
 Final Test Date: 2009/07/07





This is an actual photograph of recorder chart.

POINT	PRESSURE		PSI
	Field Reading	Elec. Office Reading	
(A) Initial Hydrostatic Mud .....	2109	2109	PSI
(B) First Initial Flow Pressure .....	25	25	PSI
(C) First Final Flow Pressure .....	28	28	PSI
(D) Initial Closed-in Pressure .....	1271	1271	PSI
(E) Second Initial Flow Pressure .....	29	29	PSI
(F) Second Final Flow Pressure .....	50	50	PSI
(G) Final Closed-in Pressure .....	1280	1280	PSI
(H) Final Hydrostatic Mud .....	2074	2074	PSI



# DIAMOND TESTING

P.O. Box 157  
HOISINGTON, KANSAS 67544  
(620) 653-7550 • (800) 542-7313  
STC 30044.D 581

Company Mull Drilling Co., Inc. Lease & Well No. Garvey Unit No. 1-13  
Elevation 2467 KB Formation Mississippi Effective Pay -- Ft. Ticket No. J2379  
Date 7-08-09 Sec. 13 Twp. 15S Range 27W County Gove State Kansas  
Test Approved By Kevin L. Kessler Diamond Representative John C. Riedl

Formation Test No. 6 Interval Tested from 4,330 ft. to 4,340 ft. Total Depth 4,340 ft.  
Packer Depth 4,325 ft. Size 6 3/4 in. Packer Depth -- ft. Size -- in.  
Packer Depth 4,330 ft. Size 6 3/4 in. Packer Depth -- ft. Size -- in.  
Depth of Selective Zone Set          ft.

Top Recorder Depth (Inside) 4,333 ft. Recorder Number 30044 Cap. 6,000 psi  
Bottom Recorder Depth (Outside) 4,337 ft. Recorder Number 11017 Cap. 4,000 psi  
Below Straddle Recorder Depth          ft. Recorder Number          Cap.          psi

Drilling Contractor Duke Drilling Co., Inc. - Rig 4 Drill Collar Length -- ft. I.D. -- in.  
Mud Type Chemical Viscosity 56 Weight Pipe Length -- ft. I.D. -- in.  
Weight 9.0 Water Loss 8.8 cc. Drill Pipe Length 4,310 ft. I.D. 3 1/2 in.  
Chlorides 2,400 P.P.M. Test Tool Length 20 ft. Tool Size 3 1/2 - IF in.  
Jars: Make Sterling Serial Number Not Run Anchor Length 10 ft. Size 4 1/2 - FH in.  
Did Well Flow? No Reversed Out No Surface Choke Size 1 in. Bottom Choke Size 5/8 in.  
Main Hole Size 7 7/8 in. Tool Joint Size 4 1/2 - XH in.

Blow: 1st Open: Strong blow. Off bottom of bucket in 10 mins. Weak blow back during shut-in.  
2nd Open: Strong blow. Off bottom of bucket in 12 mins. Weak blow back during shut-in.

Recovered 100 ft. of gas in pipe  
Recovered 100 ft. of clean gassy oil = 1.423000 bbls. (Grind out: 10%-gas; 90%-oil) Gravity: 38 @ 60°  
Recovered 750 ft. of gassy water = 10.672500 bbls. (Grind out: 10%-gas; 90%-water) Chlorides: 18,000 Ppm  
Recovered 850 ft. of TOTAL FLUID = 12.095500 bbls.  
Recovered          ft. of

Remarks         

Time Set Packer(s) 3:30 ~~P.M.~~ <sup>A.M.</sup> Time Started Off Bottom 7:10 ~~P.M.~~ <sup>A.M.</sup> Maximum Temperature 141°  
Initial Hydrostatic Pressure ..... (A) 2114 P.S.I.  
Initial Flow Period ..... Minutes 10 (B) 37 P.S.I. to (C) 80 P.S.I.  
Initial Closed In Period ..... Minutes 30 (D) 1267 P.S.I.  
Final Flow Period ..... Minutes 60 (E) 92 P.S.I. to (F) 366 P.S.I.  
Final Closed In Period ..... Minutes 120 (G) 1251 P.S.I.  
Final Hydrostatic Pressure ..... (H) 2075 P.S.I.

## GENERAL INFORMATION

### Client Information:

Company: MULL DRILLING CO INC

Contact: ERNIE MORRISON

Phone: Fax: e-mail:

### Site Information:

Contact: KEVIN KSSLER

Phone: Fax: e-mail:

### Well Information:

Name: GARVEY UNIT 1-13

Operator: MULL DRILLING CO INC

Location-Downhole: DST # 4330 TO 4340

Location-Surface: S13/ 15S/ 27W GOVE COUNTY

### Test Information:

Company: DIAMOND TESTING

Representative: JOHN RIEDL

Supervisor: KEVIN KESSLER

Test Type: CONVENTIONAL

Job Number: D581

Test Unit: 2

Start Date: 2009/07/08

Start Time: 01:40:00

End Date: 2009/07/08

End Time: 10:30:00

Report Date: 2009/07/08

Prepared By: JOHN RIEDL

### Remarks:

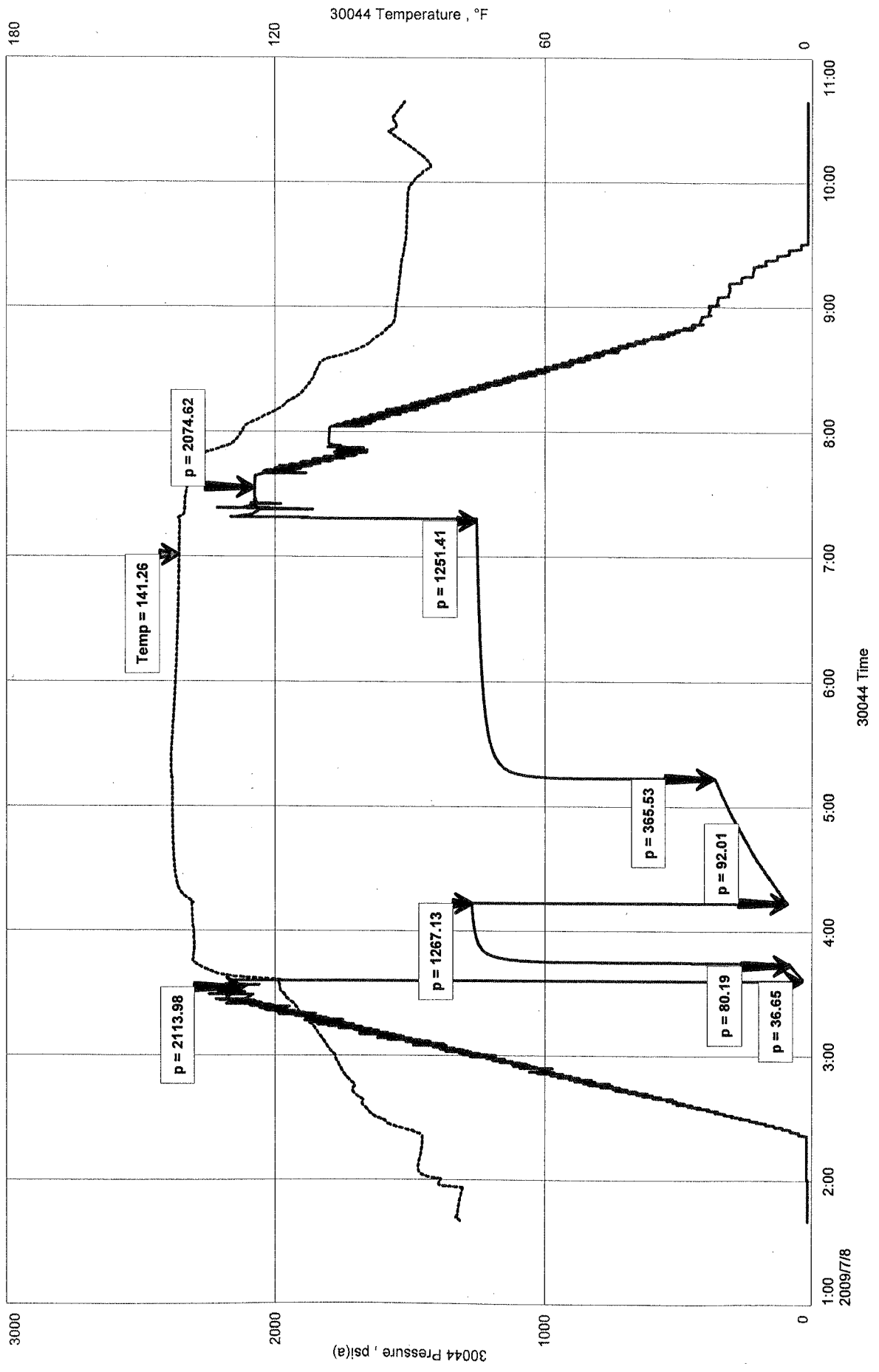
Qualified By: KEVIN KESSLER

RECOVERY: 100' GAS IN PIPE  
100' CLEAN GASSY OIL  
750' WATER

MULL DRILLING CO INC  
DST #^ 4330 TO 4340  
Start Test Date: 2009/07/08  
Final Test Date: 2009/07/08

GARVEY UNIT 1-13  
Formation: MISS  
Job Number: D581

# GARVEY UNIT 1-13



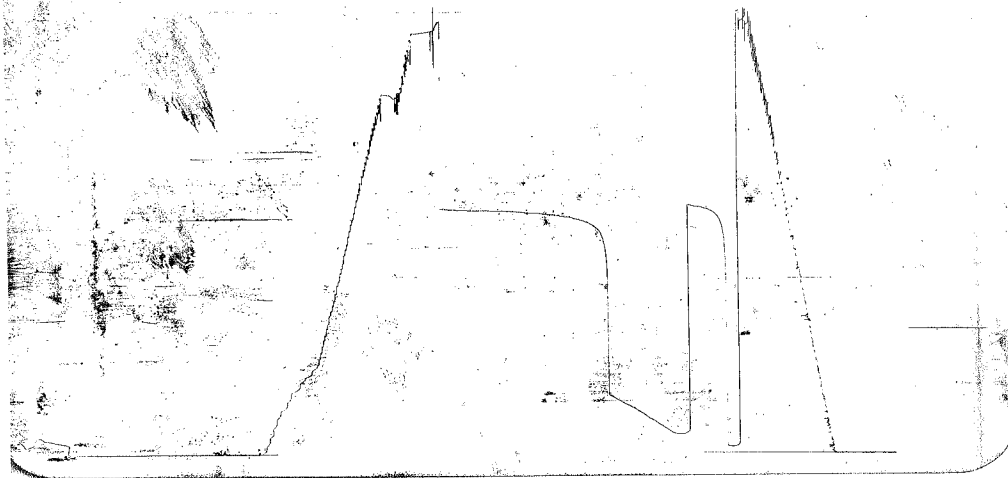
30044 Temperature, °F

30044 Pressure, psi(a)

30044 Time

MULL DRILL DST 6  
GARNEY UNIT C-13

1150 W 10 S  
0.15 F 10 S



This is an actual photograph of recorder chart.

POINT	PRESSURE		PSI
	Field Reading	Elec. Office Reading	
(A) Initial Hydrostatic Mud .....	2114	2114	PSI
(B) First Initial Flow Pressure.....	37	37	PSI
(C) First Final Flow Pressure .....	80	80	PSI
(D) Initial Closed-in Pressure .....	1267	1267	PSI
(E) Second Initial Flow Pressure .....	92	92	PSI
(F) Second Final Flow Pressure.....	366	366	PSI
(G) Final Closed-in Pressure.....	1251	1251	PSI
(H) Final Hydrostatic Mud .....	2075	2075	PSI