

DIAMOND TESTING

P.O. Box 157

HOISINGTON, KANSAS 67544

(620) 653-7550 • (800) 542-7313

STC 21098.D105

ORIGINAL

Page 1 of 3 Pages

Company Trans Pacific Oil Corporation Lease & Well No. Roberts "D" No. 1-35
Elevation 2533 KB Formation Kansas City 140'-160' Zone Effective Pay -- Ft. Ticket No. 1994
Date 5-7-05 Sec. 35 Twp. 15S Range 28W County Gove State Kansas

Test Approved By Mike Kidwell Diamond Representative Roger D. Friedly

Formation Test No. 1 Interval Tested from 3,889 ft. to 3,952 ft. Total Depth 3,952 ft.

Packer Depth 3,884 ft. Size 6 3/4 in. Packer Depth -- ft. Size -- in.

Packer Depth 3,889 ft. Size 6 3/4 in. Packer Depth -- ft. Size -- in.

Depth of Selective Zone Set -- ft.

Top Recorder Depth (Inside) 3,877 ft. Recorder Number 21098 Cap. 5,000 psi

Bottom Recorder Depth (Outside) 3,949 ft. Recorder Number 13387 Cap. 4,000 psi

Below Straddle Recorder Depth -- ft. Recorder Number -- Cap. -- psi

Drilling Contractor Duke Drilling Co., Inc. - Rig 4 Drill Collar Length -- ft. ID. -- in.

Mud Type Chemical Viscosity 45 Weight Pipe Length -- ft. ID. -- in.

Weight 9.0 Water Loss 8.8 cc. Drill Pipe Length 3,864 ft. ID. 3 1/2 in.

Chlorides 4,500 P.P.M. Test Tool Length 25 ft. Tool Size 3 1/2 - IF in.

Jars: Make Bowen Serial Number Not Run Anchor Length 32' perf. w/31' drill pipe Size 4 1/2 - FH in.

Did Well Flow? No Reversed Out No Surface Choke Size 1 in. Bottom Choke Size 5/8 in.

Main Hole Size 7 7/8 in. Tool Joint Size 4 1/2 - XH in.

Blow: 1st Open: Weak, 1/8 in., blow increasing to 1 in. intermittent. No blow back during shut-in.
2nd Open: Weak surface blow after 10 mins. Died in 30 mins. No blow back during shut-in.

Recovered 25 ft. of drilling mud = .355000 bbls.

Recovered -- ft. of --

Recovered -- ft. of --

Recovered -- ft. of --

Recovered -- ft. of --

Remarks Tool Sample Grind Out: Drilling mud with a few oil specks

KCC MAY 17 2005 CONFIDENTIAL

Time Set Packer(s) 2:48 A.M. P.M. Time Started Off Bottom 7:03 A.M. P.M. Maximum Temperature 114°

Initial Hydrostatic Pressure (A) 1814 P.S.I.

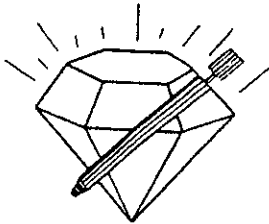
Initial Flow Period Minutes 30 (B) 7 P.S.I. to (C) 11 P.S.I.

Initial Closed In Period Minutes 75 (D) 827 P.S.I.

Final Flow Period Minutes 60 (E) 9 P.S.I. to (F) 17 P.S.I.

Final Closed In Period Minutes 90 (G) 775 P.S.I.

Final Hydrostatic Pressure (H) 1815 P.S.I.



DIAMOND TESTING
 P. O. Box 157
 HOISINGTON, KANSAS 67544
 (800) 542-7313

FLUID SAMPLE DATA

Company Trans Pacific Oil Corporation
 Lease & Well No. Roberts "D" No. 1-35
 Date 5-7-05 Sec. 35 Twp. 15 S Range 28 W
 Formation Test No. 1 Interval Tested From 3,889 ft. to 3,952 ft. Total Depth 3,952 ft.
 Formation Kansas City 140' - 160' Zone

	<u>MUD PIT</u>	<u>RECOVERY</u>
Viscosity	<u>45</u> CP	<u>54</u> CP
Weight	<u>9.0</u>	<u>8.9</u>
Water Loss	<u>8.8</u> CC	<u>9.2</u> CC
PH Factor	<u>10.0</u>	<u>10.0</u>

	<u>RESISTIVITY</u>	<u>CHLORIDE CONTENT</u>
Recovery Water	<u>-- @ -- °F.</u>	<u>-- ppm</u>
Recovery Mud	<u>1.20 @ 62 °F.</u>	<u>6,000 ppm</u>
Recovery Mud Filtrate	<u>1.05 @ 65 °F.</u>	<u>5,600 ppm</u>
Mud Pit Sample	<u>1.40 @ 56 °F.</u>	<u>5,800 ppm</u>
Mud Pit Sample Filtrate	<u>1.40 @ 58 °F.</u>	<u>5,400 ppm</u>

Sample Taken By ROGER D. FRIEDLY

Witness By MIKE KIDWELL

Remarks Pit filtrate triton dish chlorides were 4,500 Ppm
Recovery filtrate triton dish chlorides were 4,500 Ppm

GENERAL INFORMATION

Client Information:

Company: TRANS PACIFIC OIL CORPORATION

Contact: ALAN BANTA

Phone: Fax: e-mail:

Site Information:

Contact: MIKE KIDWELL

Phone: Fax: e-mail:

Well Information:

Name: ROBERTS 'D' #1-35

Operator: TRANS PACIFIC OIL CORPORATION

Location-Downhole: DST #1 KC 140' - 160' 3,889' - 3,952'

Location-Surface: SEC 35-15S-28W GOVE COUNTY

Test Information:

Company: DIAMOND TESTING

Representative: ROGER D. FRIEDLY

Supervisor: MIKE KIDWELL

Test Type: CONVENTIONAL Job Number:

Test Unit: NO. 1

Start Date: 2005/05/07 Start Time: 00:34:00

End Date: 2005/05/07 End Time: 09:16:00

Report Date: Prepared By:

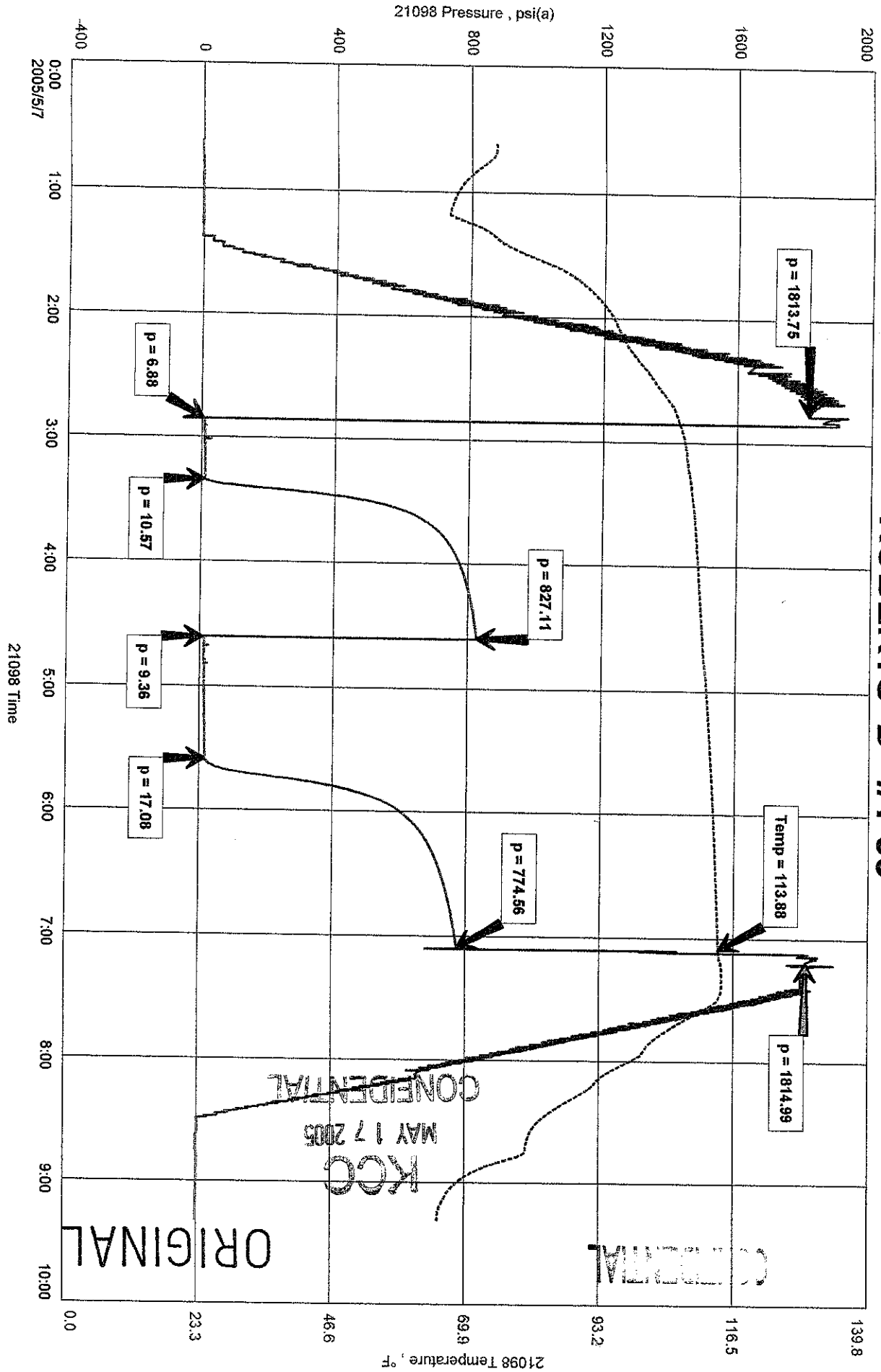
Qualified By:

Remarks:

RECOVERED: 25' DRILLING MUD

TOOL SAMPLE: 100% DRILLING MUD WITH A FEW OIL SPECKS

ROBERTS 'D' #1-35

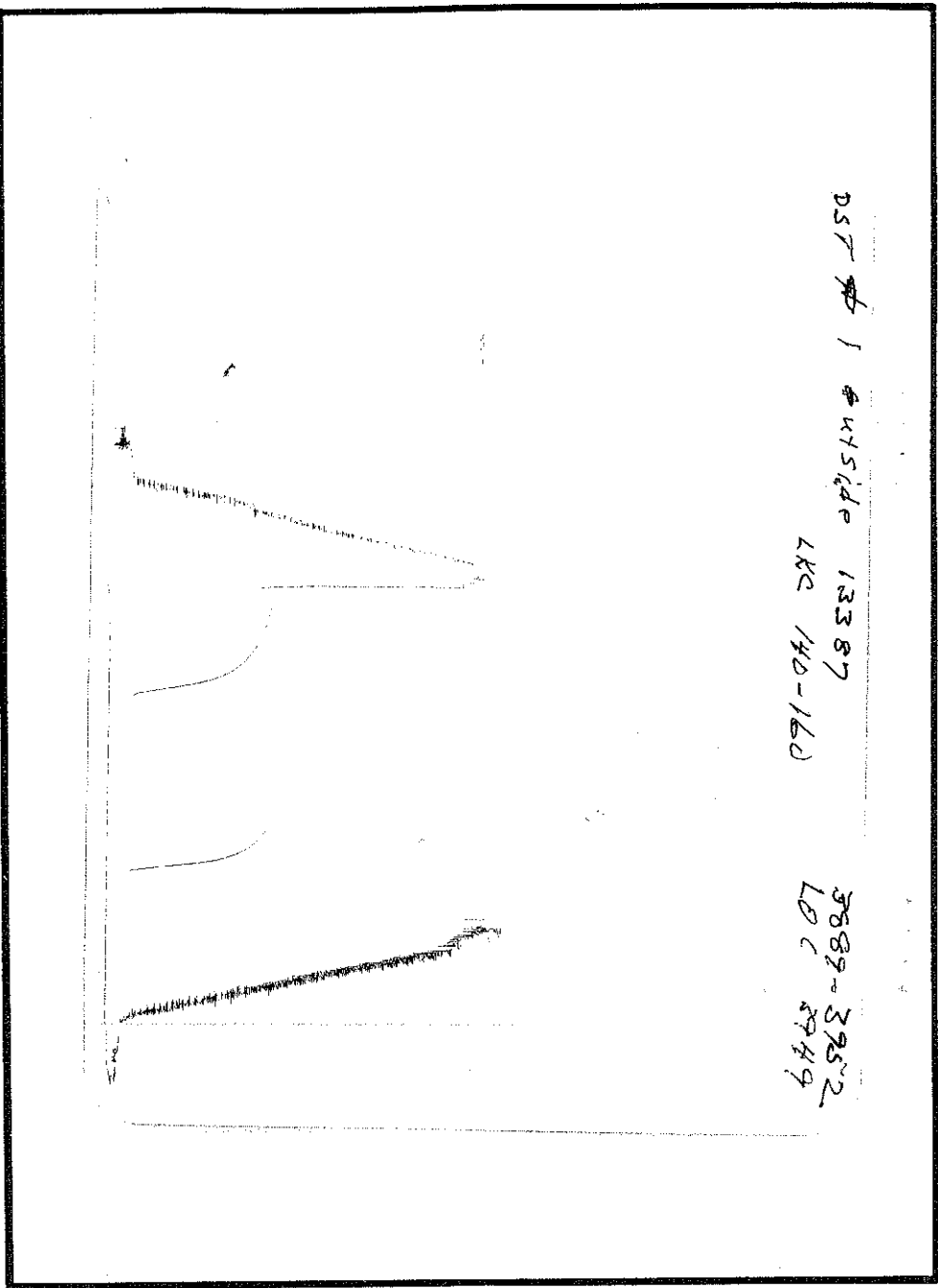


CONFIDENTIAL
 MAY 17 2005
 KCC

ORIGINAL

DST # 1 #45 side 13387
 LKC 140-160

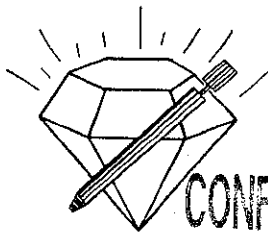
5889-3952
 LOC 2949



This is an actual photograph of recorder chart.

PRESSURE Elec.

POINT	PRESSURE	
	Field Reading	Office Reading
(A) Initial Hydrostatic Mud	1814	1814
(B) First Initial Flow Pressure	7	7
(C) First Final Flow Pressure	11	11
(D) Initial Closed-in Pressure	827	827
(E) Second Initial Flow Pressure	9	9
(F) Second Final Flow Pressure	17	17
(G) Final Closed-in Pressure	775	775



DIAMOND TESTING

P.O. Box 157

HOISINGTON, KANSAS 67544

(20) 653-7550 • (800) 542-7313
STC 21098.D106

ORIGINAL

Page 1 of 3 Pages

CONFIDENTIAL

Company Trans Pacific Oil Corporation Lease & Well No. Roberts "D" No. 1-35
Elevation 2533 KB Formation Kansas City 180' Zone Effective Pay Ft. Ticket No. 1995
Date 5-7-05 Sec. 35 Twp. 15S Range 28W County Gove State Kansas

Test Approved By Mike Kidwell Diamond Representative Roger D. Friedly

Formation Test No. 2 Interval Tested from 3,950 ft. to 3,986 ft. Total Depth 3,986 ft.

Packer Depth 3,945 ft. Size 6 3/4 in. Packer Depth ft. Size in.

Packer Depth 3,950 ft. Size 6 3/4 in. Packer Depth ft. Size in.

Depth of Selective Zone Set ft.

Top Recorder Depth (Inside) 3,938 ft. Recorder Number 21098 Cap. 5,000 psi

Bottom Recorder Depth (Outside) 3,983 ft. Recorder Number 13387 Cap. 4,000 psi

Below Straddle Recorder Depth ft. Recorder Number Cap. psi

Drilling Contractor Duke Drilling Co., Inc. - Rig 4 Drill Collar Length ft. I.D. in.

Mud Type Chemical Viscosity 48 Weight Pipe Length ft. I.D. in.

Weight 9.25 Water Loss 8.8 cc. Drill Pipe Length 3,925 ft. I.D. 3 1/2 in.

Chlorides 4,400 P.P.M. Test Tool Length 25 ft. Tool Size 3 1/2 - IF in.

Jars: Make Bowen Serial Number Not Run Anchor Length 36 ft. Size 4 1/2 - FH in.

Did Well Flow? No Reversed Out No Surface Choke Size 1 in. Bottom Choke Size 5/8 in.

Main Hole Size 7 7/8 in. Tool Joint Size 4 1/2 - XH in.

Blow: 1st Open: Weak, 1/8 in., blow increasing to 3 1/2 ins. No blow back during shut-in.
2nd Open: Weak surface blow in 11 mins. Increasing to 4 ins. No blow back during shut-in.

Recovered 90 ft. of salt water with a good, 2 in., show of free oil on top = 1.278000 bbls.

Recovered ft. of

Recovered ft. of

Recovered ft. of

Recovered ft. of

Remarks Tool Sample Grind Out: 100%-salt water with a good trace of free oil (under 1%)

KCC
MAY 17 2005

CONFIDENTIAL

Time Set Packer(s) 6:35 ^{XXM} P.M. Time Started Off Bottom 10:50 ^{XXX} P.M. Maximum Temperature 119°

Initial Hydrostatic Pressure (A) 1896 P.S.I.

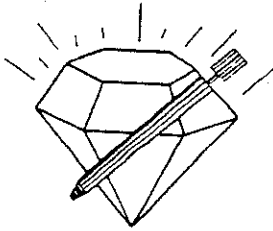
Initial Flow Period 30 Minutes (B) 7 P.S.I. to (C) 27 P.S.I.

Initial Closed In Period 75 Minutes (D) 960 P.S.I.

Final Flow Period 60 Minutes (E) 26 P.S.I. to (F) 55 P.S.I.

Final Closed In Period 90 Minutes (G) 941 P.S.I.

Final Hydrostatic Pressure (H) 1869 P.S.I.



DIAMOND TESTING
 P. O. Box 157
 HOISINGTON, KANSAS 67544
 (800) 542-7313

FLUID SAMPLE DATA

Company Trans Pacific Oil Corporation
 Lease & Well No. Roberts "D" No. 1-35
 Date 5-7-05 Sec. 35 Twp. 15 S Range 28 W
 Formation Test No. 2 Interval Tested From 3,950 ft. to 3,986 ft. Total Depth 3,986 ft.
 Formation Kansas City 180' Zone

	MUD PIT	RECOVERY	RECOVERY
Viscosity	<u>48</u> CP	<u>--</u> CP	
Weight	<u>9.25</u>	<u>--</u>	
Water Loss	<u>8.8</u> CC	<u>--</u> CC	
PH Factor	<u>10.0</u>	<u>--</u>	<u>Water</u> <u>8.0</u>

	RESISTIVITY	CHLORIDE CONTENT
Recovery Water	<u>.12</u> @ <u>62</u> °F.	<u>62,000</u> ppm
Recovery Mud	<u>--</u> @ <u>--</u> °F.	<u>--</u> ppm
Recovery Mud Filtrate	<u>--</u> @ <u>--</u> °F.	<u>--</u> ppm
Mud Pit Sample	<u>1.05</u> @ <u>72</u> °F.	<u>5,800</u> ppm
Mud Pit Sample Filtrate	<u>1.10</u> @ <u>70</u> °F.	<u>5,500</u> ppm

Sample Taken By ROGER D. FRIEDLY

Witness By MIKE KIDWELL

Remarks Pit filtrate triton dish chlorides were 4,400 Ppm
Recovery water dish chlorides were 46,000 Ppm

GENERAL INFORMATION

Client Information:

Company: TRANS PACIFIC OIL CORPORATION

Contact: ALAN BANTA

Phone: Fax: e-mail:

Site Information:

Contact: MIKE KIDWELL

Phone: Fax: e-mail:

Well Information:

Name: ROBERTS 'D' #1-35

Operator: TRANS PACIFIC OIL CORPORATION

Location-Downhole: DST #2 KC 180' 3,950' - 3,986'

Location-Surface: SEC 35-15S-28W

Test Information:

Company: DIAMOND TESTING

Representative: ROGER D. FRIEDLY

Supervisor: MIKE KIDWELL

Test Type: CONVENTIONAL Job Number:

Test Unit: NO. 1

Start Date: 2005/05/07 Start Time: 17:50:00

End Date: 2005/05/08 End Time: 01:01:00

Report Date: Prepared By:

Qualified By:

Remarks:

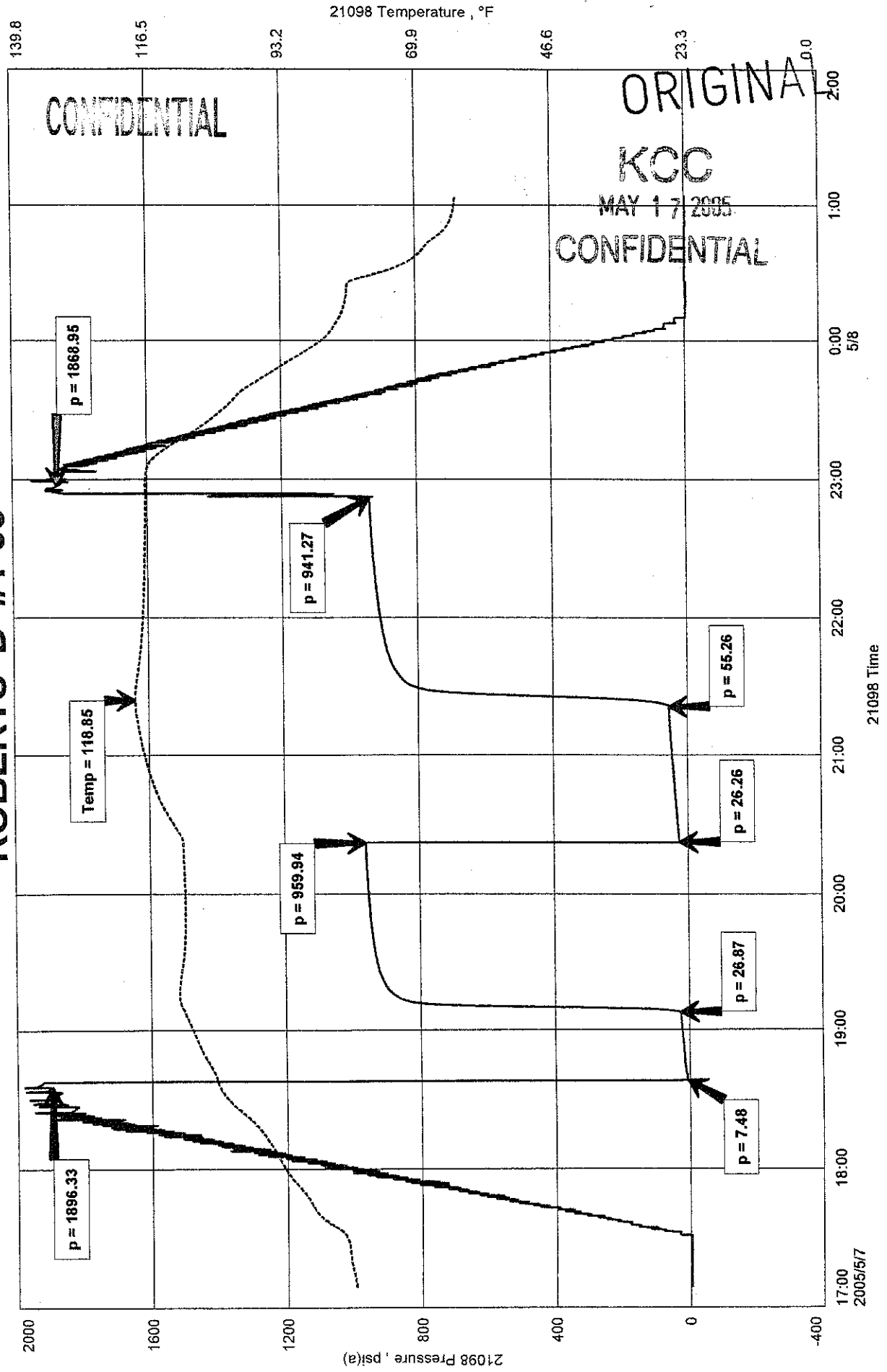
RECOVERED: 90' SALTWATER WITH A GOOD SHOW OF FREE OIL ON TOP (2")

TOOL SAMPLE: 100% SALTWATER WITH GOOD TRACE OF FREE OIL (LESS THAN 1%)

ROBERTS 'D' #1-35
 Formation: DST #2 KS 180' 3,950' - 3,986'
 Pool: WILDCAT

RANS PACIFIC OIL CORPORATION
 ST #2 KC 180' 3,950' - 3,986'
 Start Test Date: 2005/05/07
 Final Test Date: 2005/05/08

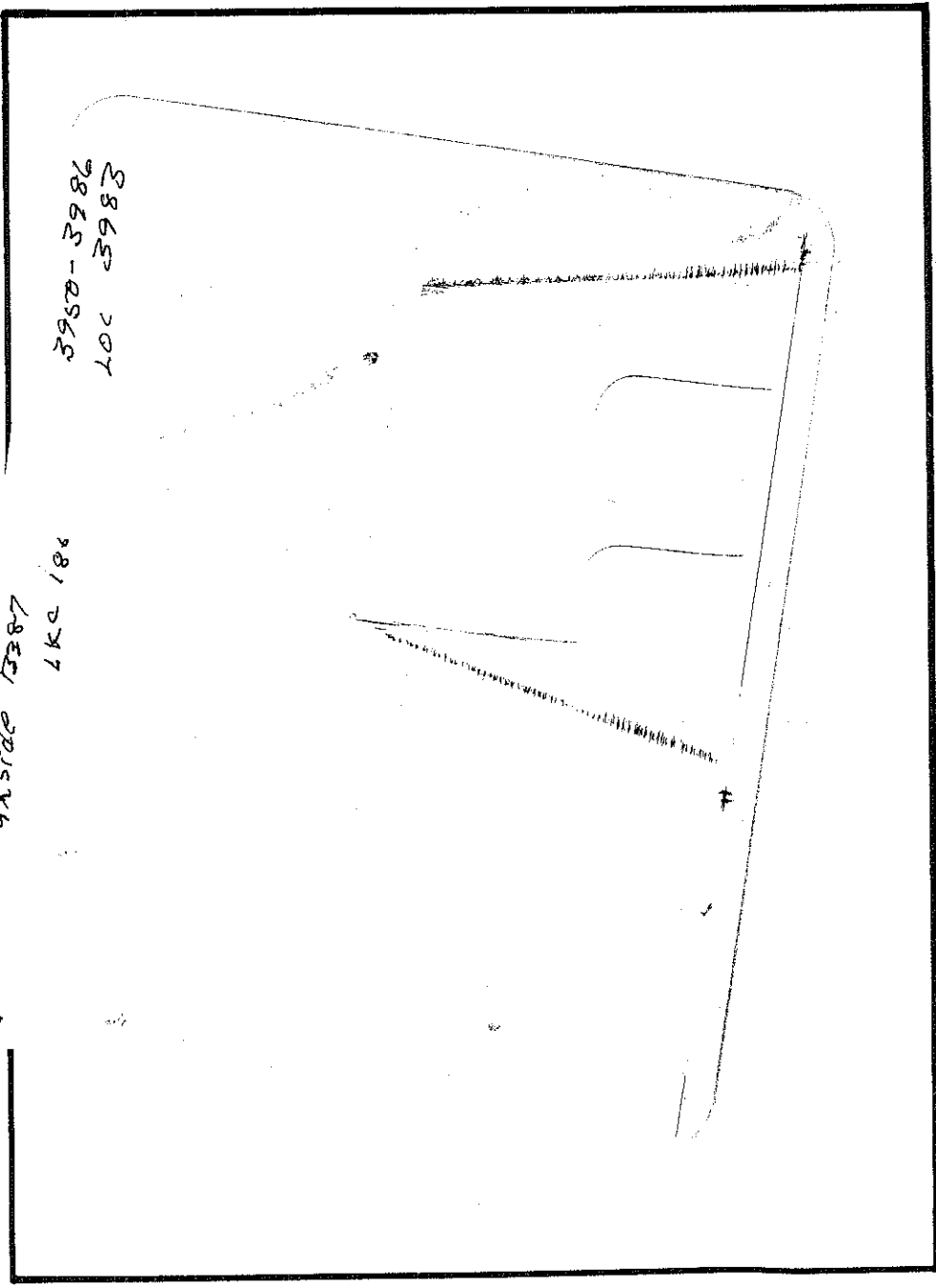
ROBERTS 'D' #1-35



1000 1000 300

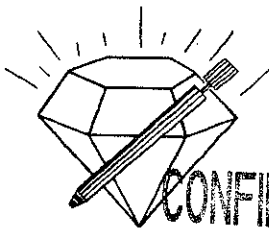
DST # 2 Outside 13387
LKC 18x

3950-3986
LOC 3983



This is an actual photograph of recorder chart.

POINT	PRESSURE	
	Field Reading	Elec. Office Reading
(A) Initial Hydrostatic Mud	1896	1896
(B) First Initial Flow Pressure	7	7
(C) First Final Flow Pressure	27	27
(D) Initial Closed-in Pressure	960	960
(E) Second Initial Flow Pressure	26	26
(F) Second Final Flow Pressure	55	55
(G) Final Closed-in Pressure	941	941



DIAMOND TESTING

P.O. Box 157

HOISINGTON, KANSAS 67544

(620) 653-7550 • (800) 542-7313

STC 21098.D107

ORIGINAL

Page 1 of 9 Pages

CONFIDENTIAL

Company Trans Pacific Oil Corporation Lease & Well No. Roberts "D" No. 1-35
Elevation 2533 KB Formation Kansas City 200' Zone Effective Pay 6 Ft. Ticket No. 1996
Date 5-8-05 Sec. 35 Twp. 15S Range 28W County Gove State Kansas

Test Approved By Mike Kidwell Diamond Representative Roger D. Friedly

Formation Test No. 3 Interval Tested from 3,988 ft. to 4,015 ft. Total Depth 4,015 ft.
Packer Depth 3,983 ft. Size 6 3/4 in. Packer Depth -- ft. Size -- in.
Packer Depth 3,988 ft. Size 6 3/4 in. Packer Depth -- ft. Size -- in.
Depth of Selective Zone Set ft.

Top Recorder Depth (Inside) 3,976 ft. Recorder Number 21098 Cap. 5,000 psi
Bottom Recorder Depth (Outside) 4,012 ft. Recorder Number 13387 Cap. 4,000 psi
Below Straddle Recorder Depth ft. Recorder Number Cap. psi

Drilling Contractor Duke Drilling Co., Inc. - Rig 4 Drill Collar Length -- ft. I.D. -- in.
Mud Type Chemical Viscosity 45 Weight Pipe Length -- ft. I.D. -- in.
Weight 9.2 Water Loss 8.8 cc. Drill Pipe Length 3,963 ft. I.D. 3 1/2 in.
Chlorides 4,500 P.P.M. Test Tool Length 25 ft. Tool Size 3 1/2 - IF in.
Jars: Make Bowen Serial Number Not Run Anchor Length 27 ft. Size 4 1/2 - FH in.
Did Well Flow? No Reversed Out No Surface Choke Size 1 in. Bottom Choke Size 5/8 in.
Main Hole Size 7 7/8 in. Tool Joint Size 4 1/2 - XH in.

Blow: 1st Open: Weak, 1/8 in., blow increasing. Off bottom of bucket in 30 mins. No blow back during shut-in.
2nd Open: Weak, 1/4 in., blow increasing. Off bottom of bucket in 30 mins. Weak surface blow back during shut-in.

Recovered 280 ft. of gas in pipe
Recovered 20 ft. of clean oil = .284000 bbls. (Gravity: 40 @ 60°)
Recovered 10 ft. of slightly water & gas cut muddy oil = .142000 bbls. (Grind out: 2%-water; 12%-gas; 40%-mud; 46%-mud)
Recovered 62 ft. of oil & gas cut watery mud = .880400 bbls. (Grind out: 16%-oil; 22%-gas; 26%-water; 36%-mud)
Recovered 92 ft. of TOTAL FLUID = 1.306400 bbls.

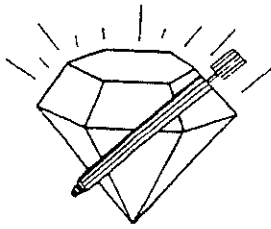
Remarks Tool Sample Grind Out: 4%-gas; 22%-water; 32%-mud; 42%-oil

KCC

MAY 17 2005

CONFIDENTIAL

Time Set Packer(s) 9:47 A.M. Time Started Off Bottom 2:02 P.M. Maximum Temperature 115°
Initial Hydrostatic Pressure (A) 1871 P.S.I.
Initial Flow Period Minutes 30 (B) 7 P.S.I. to (C) 23 P.S.I.
Initial Closed In Period Minutes 75 (D) 666 P.S.I.
Final Flow Period Minutes 60 (E) 24 P.S.I. to (F) 45 P.S.I.
Final Closed In Period Minutes 90 (G) 656 P.S.I.
Final Hydrostatic Pressure (H) 1874 P.S.I.



DIAMOND TESTING
 P. O. Box 157
 HOISINGTON, KANSAS 67544
 (800) 542-7313

FLUID SAMPLE DATA

Company Trans Pacific Oil Corporation
 Lease & Well No. Roberts "D" No. 1-35
 Date 5-8-05 Sec. 35 Twp. 15 S Range 28 W
 Formation Test No. 3 Interval Tested From 3,988 ft. to 4,015 ft. Total Depth 4,015 ft.
 Formation Kansas City 200' Zone

	<u>MUD PIT</u>	<u>RECOVERY</u>	<u>RECOVERY</u>
Viscosity	<u>45</u> CP	<u>--</u> CP	
Weight	<u>9.2</u>	<u>--</u>	
Water Loss	<u>8.8</u> CC	<u>--</u> CC	
PH Factor	<u>10.0</u>	<u>--</u>	<u>Water</u> <u>8.0</u>

	<u>RESISTIVITY</u>	<u>CHLORIDE</u> <u>CONTENT</u>
Recovery Water	<u>.25 @ 86 °F.</u>	<u>21,000 ppm</u>
Recovery Mud	<u>-- @ -- °F.</u>	<u>-- ppm</u>
Recovery Mud Filtrate	<u>-- @ -- °F.</u>	<u>-- ppm</u>
Mud Pit Sample	<u>.98 @ 82 °F.</u>	<u>5,500 ppm</u>
Mud Pit Sample Filtrate	<u>1.00 @ 84 °F.</u>	<u>5,200 ppm</u>

Sample Taken By ROGER D. FRIEDLY

Witness By MIKE KIDWELL

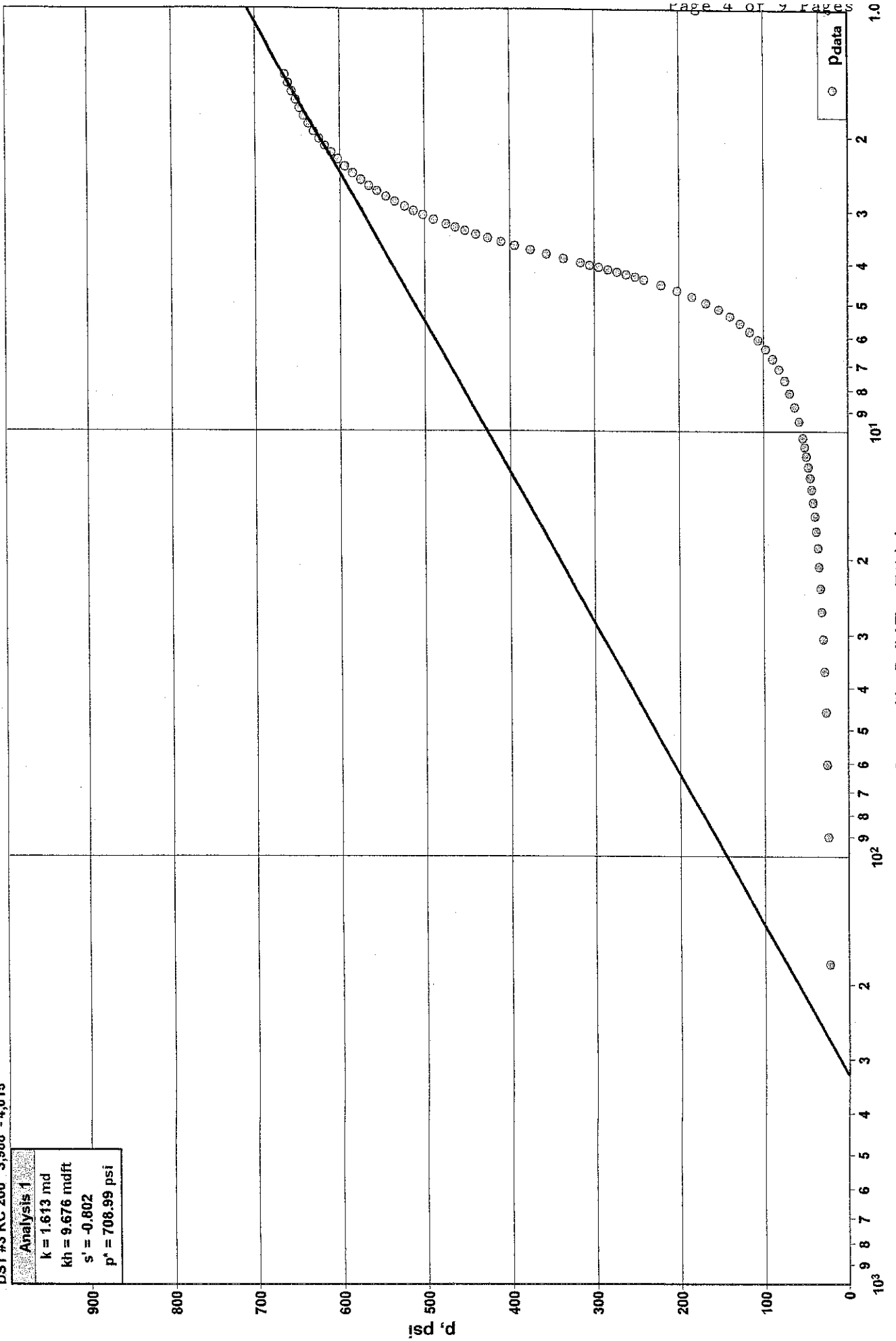
Remarks Pit filtrate triton dish chlorides were 4,500 Ppm
Recovery water dish chlorides were 17,000 Ppm

TRANS PAC OIL CORP
 ROBERTS 'D' #1-35
 DST #3 KC 200' 3,988' - 4,015

Analysis 1
 k = 1.613 md
 kh = 9.676 mdft
 s' = -0.802
 p* = 708.99 psi

HORNER PLOT DST #3 INITIAL SHUT-IN

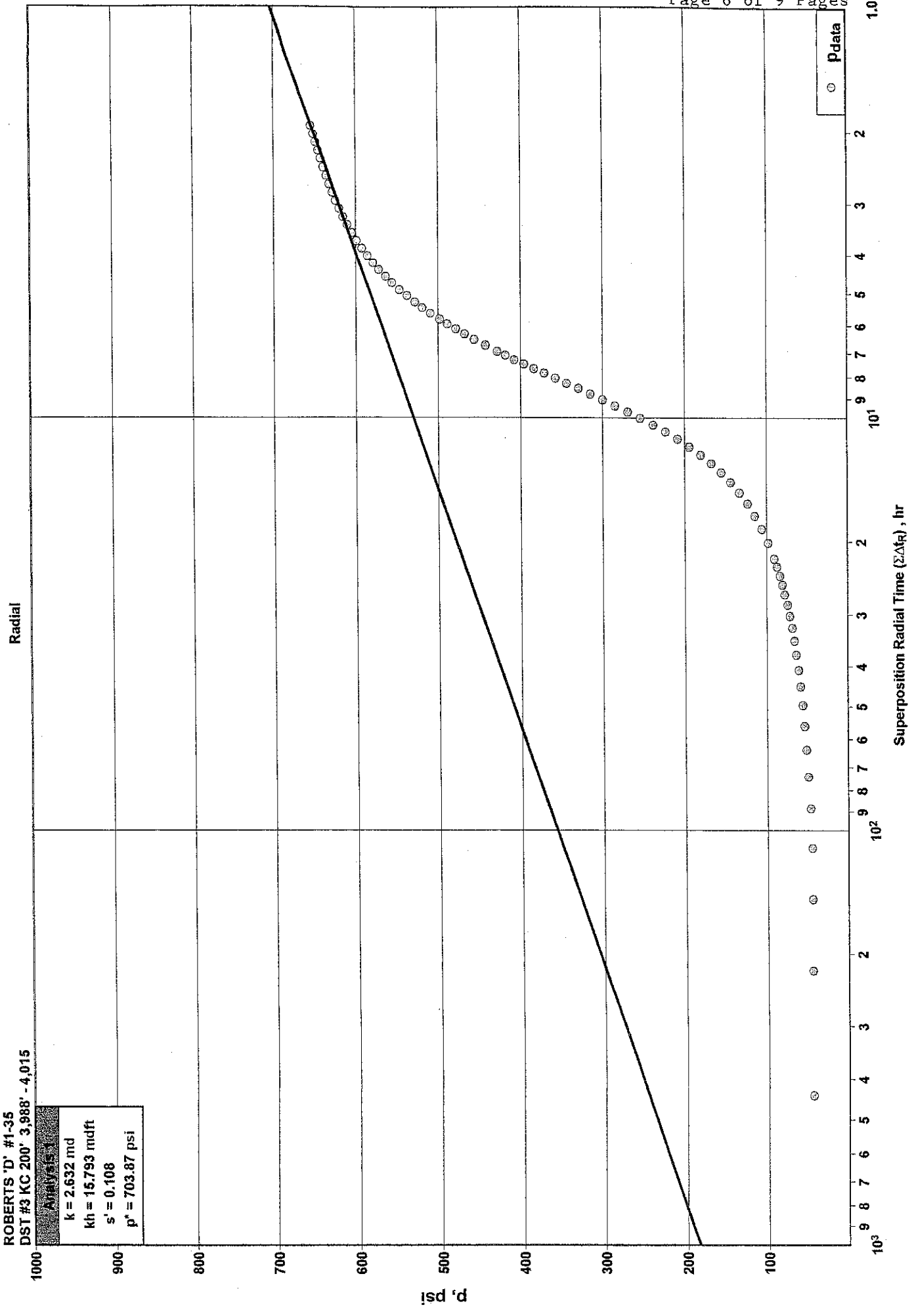
Radial



HORNER PLOT DST #3 FINAL SHUT-IN

TRANS PAC OIL CORP
ROBERTS 'D' #1-35
DST #3 KC 200' 3,988' - 4,015'

Analysis	
k =	2.632 md
kh =	15.793 mdft
s' =	0.108
p* =	703.87 psi



Oil Well Test - Buildup

Radial Flow Analysis

TRANS PAC OIL CORP
ROBERTS 'D' #1-35

DST #3 KC 200' 3,988' - 4,015

Analysis Results

Total Sandface Rate ($q_t B_t$)	8.406 bbl/d	Apparent Skin (s')	0.108
Semilog Slope (m)	172.82	Skin - Damage	0.108
Gas Permeability (k_g)	md	Skin - Inclination	
Oil Permeability (k_o)	2.632 md	Skin - Partial Penetration	
Water Permeability (k_w)	md	Pressure Drop Due to Skin (Δp_s)	16.17 psi
Flow Capacity (kh)	15.793 md.ft	Damage Ratio (DR)	1.008
Total Mobility (k/μ_t)	1.32 md/cp	Flow Efficiency (FE)	0.992
Total Transmissivity (kh/μ_t)	7.91 md.ft/cp		

Reservoir Parameters

Net Pay (h)	6.000 ft
Total Porosity ($\epsilon \phi_t$)	15.00 %
Water Saturation (S_w)	20.00 %
Oil Saturation (S_o)	80.00 %
Gas Saturation (S_g)	0.00 %
Wellbore Radius (r_w)	0.30 ft
Formation Temperature (T)	120.0 °F
Formation Compressibility (c_f)	4.109e-6 psi ⁻¹
Total Compressibility (c_t)	1.294e-5 psi ⁻¹

Pressures

Initial Pressure (p_i)	2008.60 psi
Extrapolated Pressure (p^*)	703.87 psi
Final Flowing Pressure (p_{wfo})	44.96 psi

Production and Times

Corrected Flow Time (t_c)	1.4889 hr
Cumulative Oil Production	0.435 bbl
Final Oil Rate	7.000 bbl/d

Fluid Properties

Oil Compressibility (c_o)	1.02899e-5 psi ⁻¹
Oil Formation Volume Factor (B_o)	1.201
Oil Viscosity (μ_o)	1.997 cp
Solution Gas Ratio (R_s)	365 scf/bbl
Oil Gravity (γ_o)	30.00 ° API
Gas Gravity (G)	0.650
PVT Reference Pressure (pp_{VT})	2008.60 psi

TRANS PACIFIC OIL CORPORATION

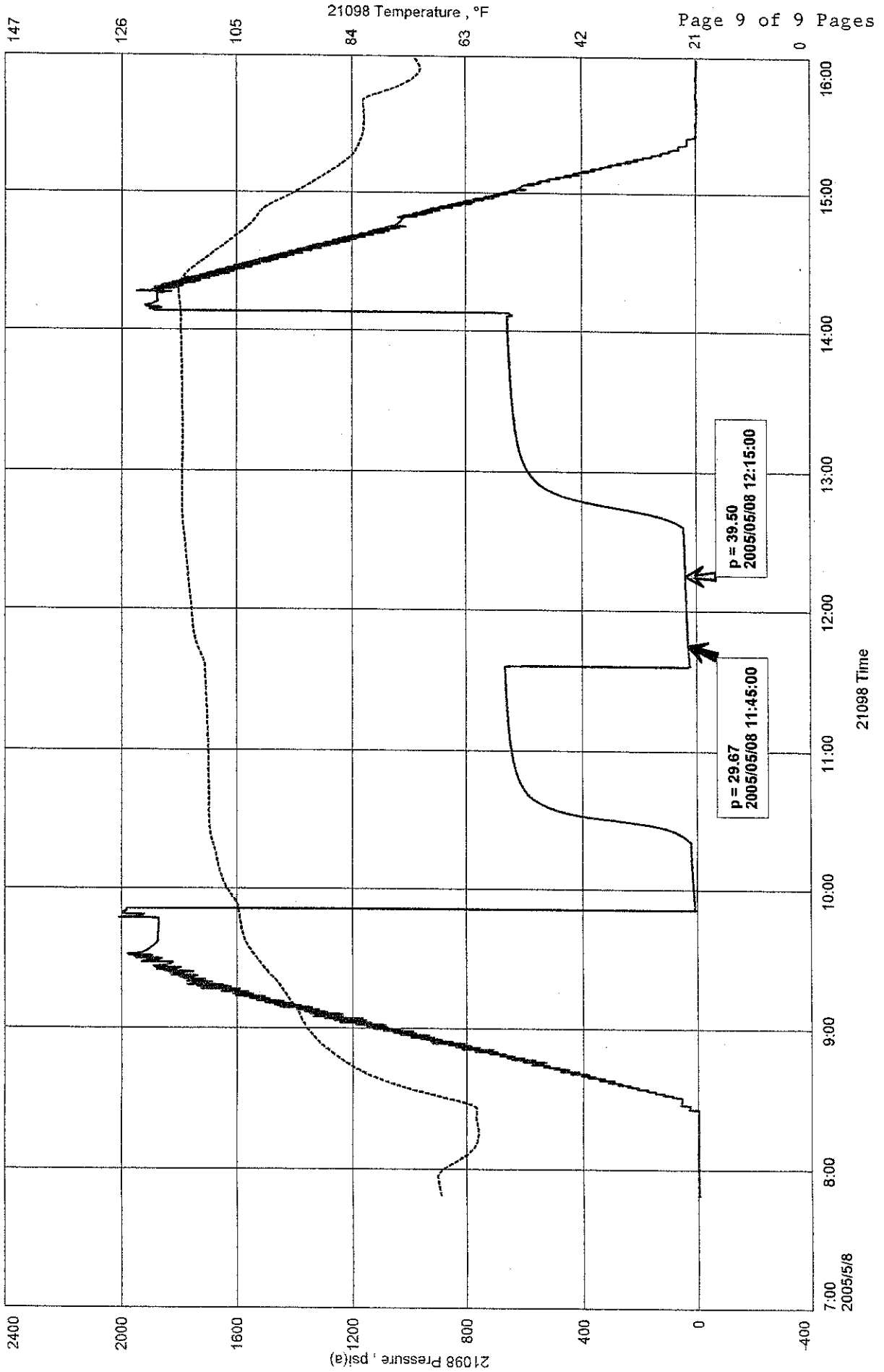
<u>DESCRIPTION</u>	<u>SECOND READING</u>	<u>FIRST READING</u>	<u>PRESSURE CHANGE</u>	<u>PIPE SIZE-ID</u>	<u>FLUID GRADIENT</u>	<u>TIME CHANGE</u>	<u>TOTAL TIME</u>	<u>DAILY PROD.</u>	<u>AVERAGE ESTIMATED % OIL PRODUCTION</u>
FINAL FLOW	40	30	10	0.0142	0.3573	30	1440	19	0.375
									7

ROBERTS 'D' # 1-35 DST #3 KC 200' 3,988' - 4,015'

TRANS PACIFIC OIL CORPORATION
DST #3 KC 200' 3,988' - 4,015'
Start Test Date: 2005/05/08
Final Test Date: 2005/05/08

ROBERTS 'D' #1-35
Formation: DST #3 KC 200' 3,988' - 4,015'
Pool: WILDCAT

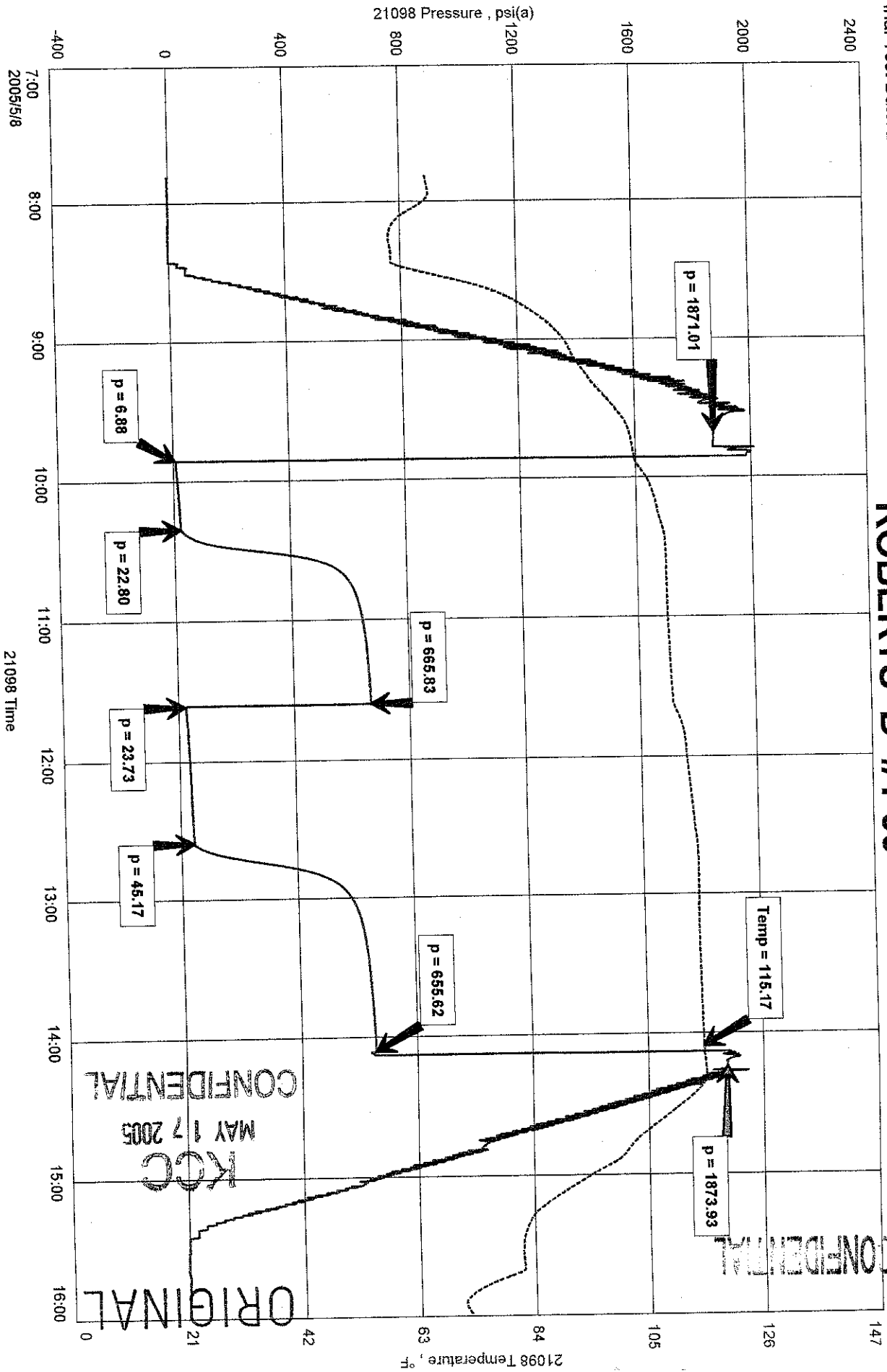
ROBERTS 'D' #1-35 EST. PROD. CHT.



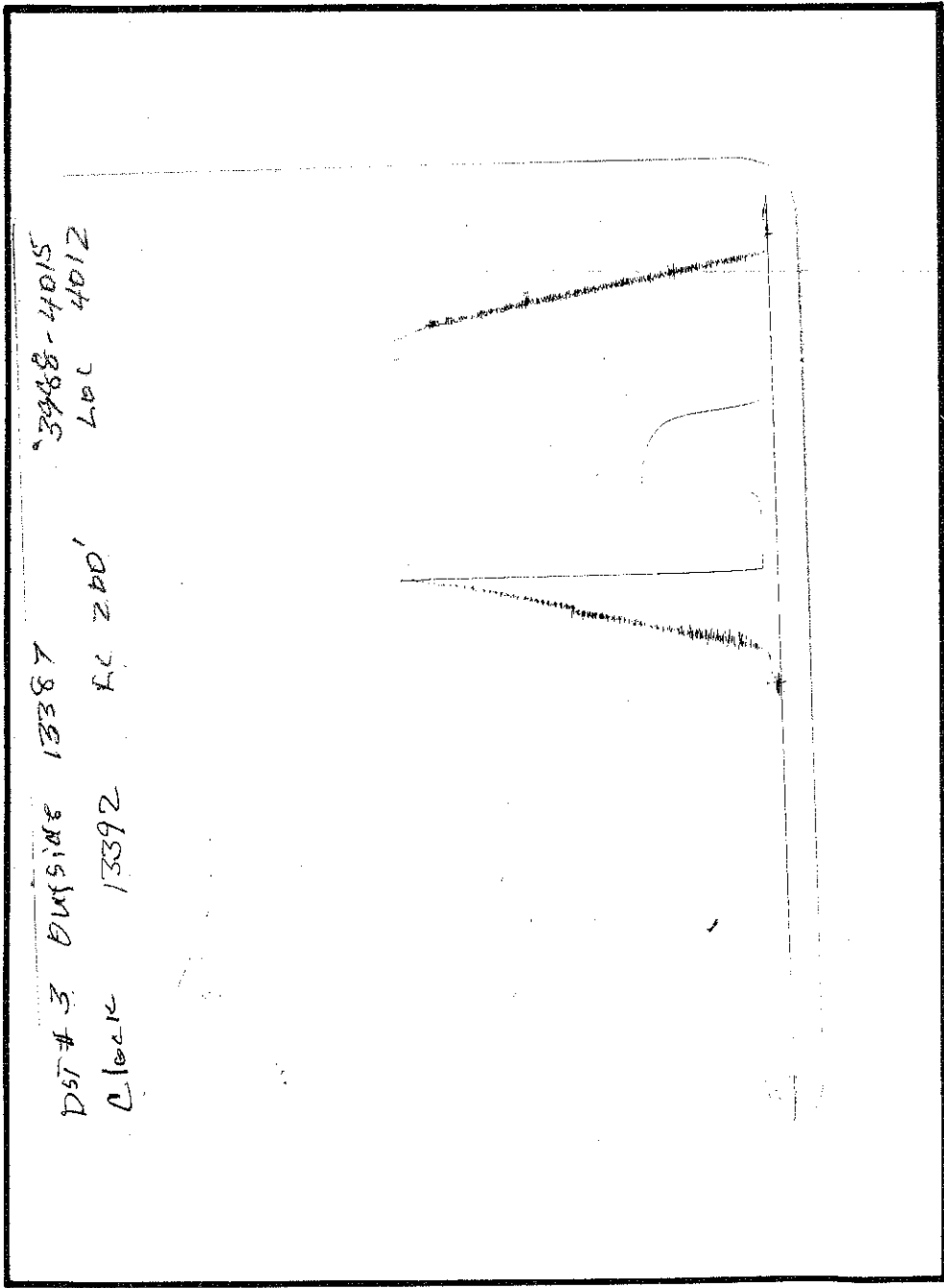
TRANS PACIFIC OIL CORPORATION
 DST #3 KC 200' 3,988' - 4,015'
 Start Test Date: 2005/05/08
 Final Test Date: 2005/05/08

ROBERTS 'D' #1-35

ROBERTS 'D' #1-35
 Formation: DST #3 KC 200' 3,988' - 4,015'
 Pool: WILDCAT



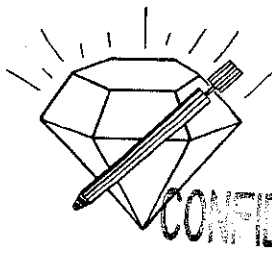
CONFIDENTIAL
 MAY 17 2005
 KCC
 ORIGINAL



DST # 3 BUSINE 13387
 Clock 13392 R.C. 240'
 3968-4015
 L.C. 4012

This is an actual photograph of recorder chart.

POINT	PRESSURE	
	Field Reading	Elec. Office Reading
(A) Initial Hydrostatic Mud	1871	1871
(B) First Initial Flow Pressure	7	7
(C) First Final Flow Pressure	23	23
(D) Initial Closed-in Pressure	666	666
(E) Second Initial Flow Pressure	24	24
(F) Second Final Flow Pressure	45	45
(G) Final Closed-in Pressure	656	656



DIAMOND TESTING

P.O. Box 157

HOISINGTON, KANSAS 67544

(620) 653-7550 • (800) 542-7313

STC 21098.D108

ORIGINAL

Page 1 of 3 Pages

Company Trans Pacific Oil Corporation Lease & Well No. Roberts "D" No. 1-35
 Elevation 2533 KB Formation Kansas City 220' Zone Effective Pay Ft. Ticket No. 1997
 Date 5-9-05 Sec. 35 Twp. 15S Range 28W County Gove State Kansas

Test Approved By Mike Kidwell Diamond Representative Roger D. Friedly

Formation Test No. 4 Interval Tested from 4,017 ft. to 4,052 ft. Total Depth 4,052 ft.

Packer Depth 4,012 ft. Size 6 3/4 in. Packer Depth ft. Size in.

Packer Depth 4,017 ft. Size 6 3/4 in. Packer Depth ft. Size in.

Depth of Selective Zone Set ft.

Top Recorder Depth (Inside) 4,005 ft. Recorder Number 21098 Cap. 5,000 psi

Bottom Recorder Depth (Outside) 4,049 ft. Recorder Number 13387 Cap. 4,000 psi

Below Straddle Recorder Depth ft. Recorder Number Cap. psi

Drilling Contractor Duke Drilling Co., Inc. - Rig 4 Drill Collar Length ft. I.D. in.

Mud Type Chemical Viscosity 50 Weight Pipe Length ft. I.D. in.

Weight 9.45 Water Loss 8.4 cc. Drill Pipe Length 3,992 ft. I.D. 3 1/2 in.

Chlorides 5,200 P.P.M. Test Tool Length 25 ft. Tool Size 3 1/2 - IF in.

Jars: Make Bowen Serial Number Not Run Anchor Length 35 ft. Size 4 1/2 - FH in.

Did Well Flow? No Reversed Out No Surface Choke Size 1 in. Bottom Choke Size 5/8 in.

Main Hole Size 7 7/8 in. Tool Joint Size 4 1/2 - XH in.

Blow: 1st Open: Weak, 1/8 in., blow. Decreasing in 17 mins. Weak surface blow at end.

2nd Open: No blow.

Recovered 3 ft. of drilling mud = .042600 bbls. (No show)

Recovered ft. of

Recovered ft. of

Recovered ft. of

Recovered ft. of

Remarks Tool Sample Grind Out: 100%-drilling mud (No show)

KCC
MAY 17 2005
CONFIDENTIAL

Time Set Packer(s) 1:16 ^{A.M.}~~P.M.~~ Time Started Off Bottom 3:16 ^{A.M.}~~P.M.~~ Maximum Temperature 110°

Initial Hydrostatic Pressure (A) 1939 P.S.I.

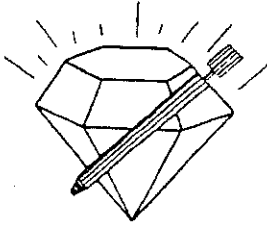
Initial Flow Period Minutes 30 (B) 5 P.S.I. to (C) 6 P.S.I.

Initial Closed In Period Minutes 30 (D) 30 P.S.I.

Final Flow Period Minutes 30 (E) 7 P.S.I. to (F) 8 P.S.I.

Final Closed In Period Minutes 30 (G) 19 P.S.I.

Final Hydrostatic Pressure (H) 1920 P.S.I.



DIAMOND TESTING
 P. O. Box 157
 HOISINGTON, KANSAS 67544
 (800) 542-7313

FLUID SAMPLE DATA

Company Trans Pacific Oil Corporation
 Lease & Well No. Roberts "D" No. 1-35
 Date 5-9-05 Sec. 35 Twp. 15 S Range 28 W
 Formation Test No. 4 Interval Tested From 4,017 ft. to 4,052 ft. Total Depth 4,052 ft.
 Formation Kansas City 220' Zone

	<u>MUD PIT</u>	<u>RECOVERY</u>
Viscosity	<u>50</u> CP	<u>56</u> CP
Weight	<u>9.45</u>	<u>9.4</u>
Water Loss	<u>8.4</u> CC	<u>8.8</u> CC
PH Factor	<u>9.5</u>	<u>9.5</u>

	<u>RESISTIVITY</u>	<u>CHLORIDE CONTENT</u>
Recovery Water	<u>--</u> @ <u>--</u> °F.	<u>--</u> ppm
Recovery Mud	<u>1.20</u> @ <u>52</u> °F.	<u>7,000</u> ppm
Recovery Mud Filtrate	<u>1.30</u> @ <u>52</u> °F.	<u>6,400</u> ppm
Mud Pit Sample	<u>1.10</u> @ <u>60</u> °F.	<u>6,700</u> ppm
Mud Pit Sample Filtrate	<u>1.20</u> @ <u>62</u> °F.	<u>6,000</u> ppm

Sample Taken By ROGER D. FRIEDLY

Witness By MIKE KIDWELL

Remarks Pit filtrate triton dish chlorides were 5,200 Ppm
Recovery filtrate triton dish chlorides were 5,400 Ppm

GENERAL INFORMATION

Client Information:

Company: TRANS PACIFIC OIL CORPORATION

Contact: ALAN BANTA

Phone: Fax: e-mail:

Site Information:

Contact: MIKE KIDWELL

Phone: Fax: e-mail:

Well Information:

Name: ROBERTS 'D' #1-35

Operator: TRANS PACIFIC OIL CORPORATION

Location-Downhole: DST #4 KC 220' 4,017' - 4,052'

Location-Surface: SEC 35-15S-28W GOVE COUNTY

Test Information:

Company: DIAMOND TESTING

Representative: ROGER D. FRIEDLY

Supervisor: MIKE KIDWELL

Test Type: CONVENTIONAL Job Number:

Test Unit: NO. 1

Start Date: 2005/05/08 Start Time: 23:25:00

End Date: 2005/05/09 End Time: 05:16:00

Report Date: Prepared By:

Remarks: Qualified By:

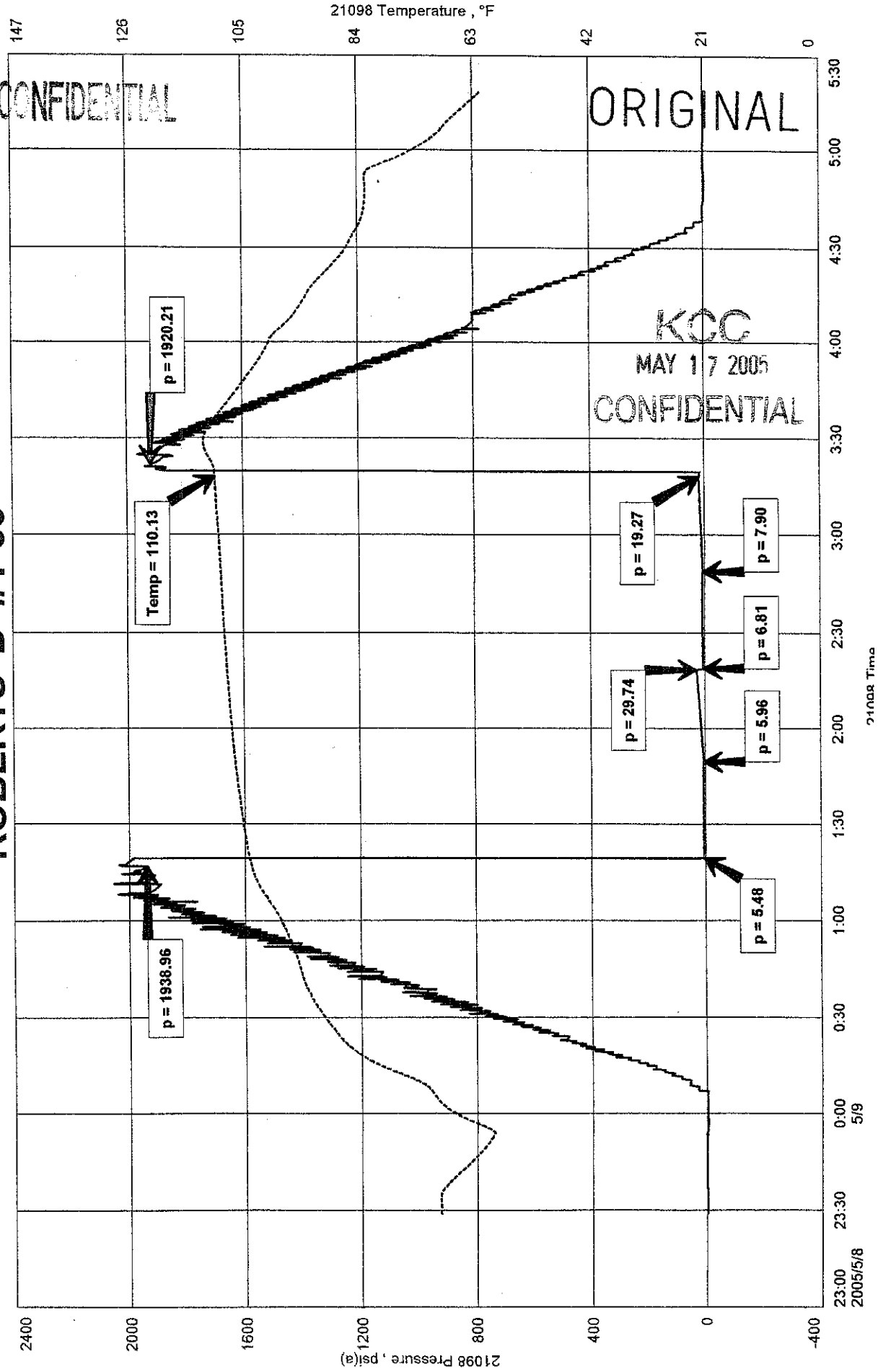
RECOVERED: 3' DRILLING MUD - NO SHOW

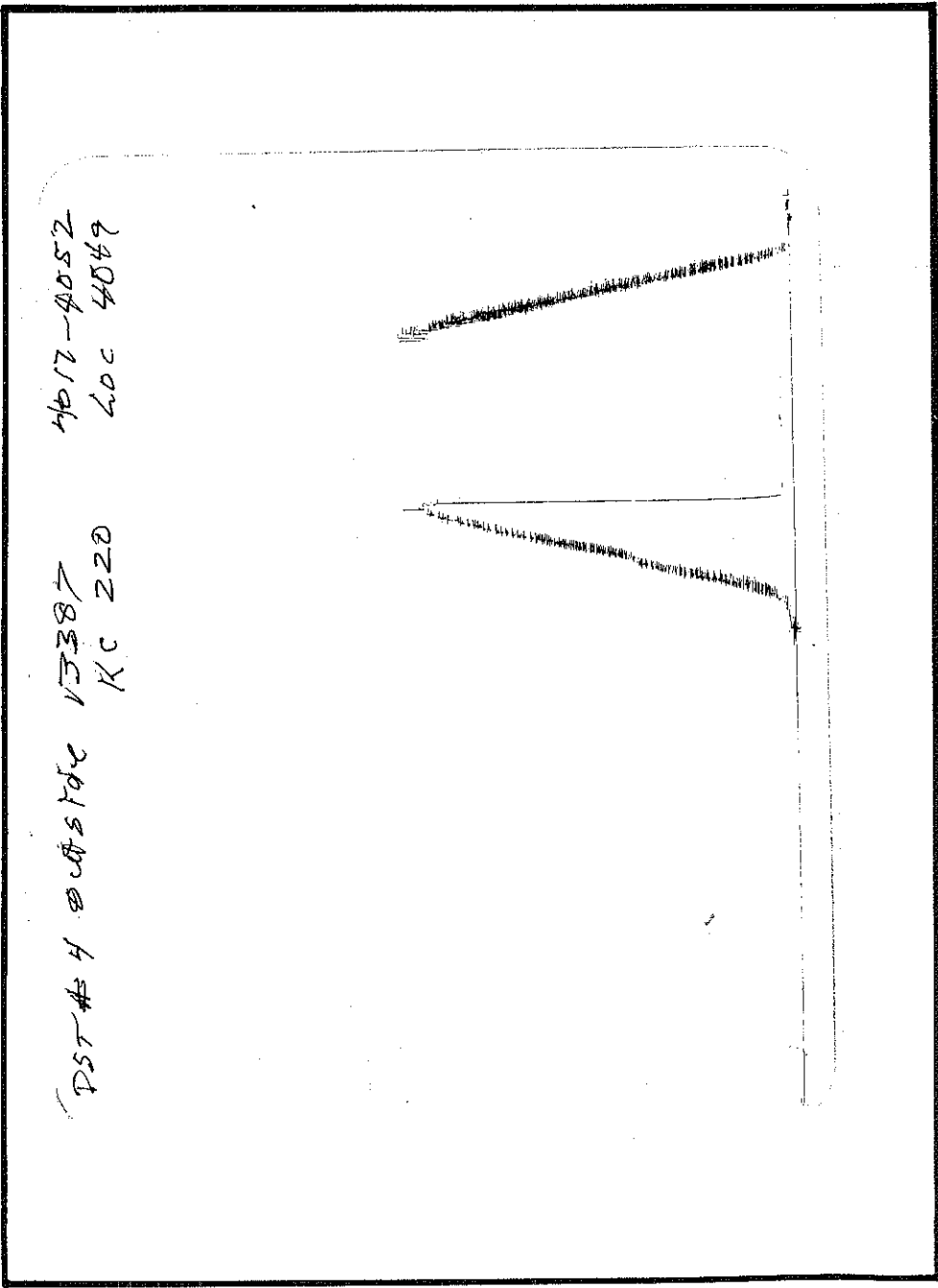
TOOL SAMPLE 100% DRILLING MUD - NO SHOW.

RANS PACIFIC OIL CORPORATION
 DST #4 KC 220' 4,017' - 4,052'
 Start Test Date: 2005/05/08
 Final Test Date: 2005/05/09

ROBERTS 'D' #1-35
 Formation: DST #4 KC 220' 4,017' - 4,052'
 Pool: WILDCAT

ROBERTS 'D' #1-35





This is an actual photograph of recorder chart.

POINT	PRESSURE	
	Field Reading	Elec. Office Reading
(A) Initial Hydrostatic Mud	1939	1939
(B) First Initial Flow Pressure	5	5
(C) First Final Flow Pressure	6	6
(D) Initial Closed-in Pressure	30	30
(E) Second Initial Flow Pressure	7	7
(F) Second Final Flow Pressure	8	8
(G) Final Closed-in Pressure	19	19



DIAMOND TESTING

P.O. Box 157

HOISINGTON, KANSAS 67544

(20) 653-7550 • (800) 542-7313

STC 21098.D109

ORIGINAL

Page 1 of 3 Pages

CONFIDENTIAL

Company Trans Pacific Oil Corporation Lease & Well No. Roberts "D" No. 1-35
Elevation 2533 KB Formation Fort Scott Effective Pay -- Ft. Ticket No. 1998
Date 5-10-05 Sec. 35 Twp. 15S Range 28W County Gove State Kansas
Test Approved By Mike Kidwell Diamond Representative Roger D. Friedly

Formation Test No. 5 Interval Tested from 4,226 ft. to 4,266 ft. Total Depth 4,266 ft.
Packer Depth 4,221 ft. Size 6 3/4 in. Packer Depth -- ft. Size -- in.
Packer Depth 4,226 ft. Size 6 3/4 in. Packer Depth -- ft. Size -- in.
Depth of Selective Zone Set -- ft.

Top Recorder Depth (Inside) 4,214 ft. Recorder Number 21098 Cap. 5,000 psi
Bottom Recorder Depth (Outside) 4,263 ft. Recorder Number 13387 Cap. 4,000 psi
Below Straddle Recorder Depth -- ft. Recorder Number -- Cap. -- psi

Drilling Contractor Duke Drilling Co., Inc. - Rig 4 Drill Collar Length -- ft. I.D. -- in.
Mud Type Chemical Viscosity 49 Weight Pipe Length -- ft. I.D. -- in.
Weight 9.5 Water Loss 12.8 cc. Drill Pipe Length 4,201 ft. I.D. 3 1/2 in.
Chlorides 6,400 P.P.M. Test Tool Length 25 ft. Tool Size 3 1/2 - IE in.
Jars: Make Bowen Serial Number Not Run Anchor Length 40 ft. Size 4 1/2 - FH in.
Did Well Flow? No Reversed Out No Surface Choke Size 1 in. Bottom Choke Size 5/8 in.
Main Hole Size 7 7/8 in. Tool Joint Size 4 1/2 - XH in.

Blow: 1st Open: Weak, 1/8 in., blow. Decreasing in 14 mins. Dead in 28 mins. No blow back during shut-in.
2nd Open: No blow. No blow back during shut-in.

Recovered 5 ft. of drilling mud = .071000 bbls.

Recovered -- ft. of

Recovered -- ft. of

Recovered -- ft. of

Recovered -- ft. of

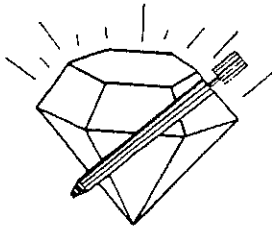
Remarks Tool Sample Grind Out: 100%-drilling mud with a few oil specks

KCC

MAY 17 2005

CONFIDENTIAL

Time Set Packer(s) 6:28 A.M. Time Started Off Bottom 8:28 A.M. Maximum Temperature 115°
Initial Hydrostatic Pressure (A) 2019 P.S.I.
Initial Flow Period Minutes 30 (B) 6 P.S.I. to (C) 11 P.S.I.
Initial Closed In Period Minutes 30 (D) 348 P.S.I.
Final Flow Period Minutes 30 (E) 7 P.S.I. to (F) 10 P.S.I.
Final Closed In Period Minutes 30 (G) 120 P.S.I.
Final Hydrostatic Pressure (H) 2019 P.S.I.



DIAMOND TESTING
 P. O. Box 157
 HOISINGTON, KANSAS 67544
 (800) 542-7313

Page 2 of 3 Pages

FLUID SAMPLE DATA

Company Trans Pacific Oil Corporation
 Lease & Well No. Roberts "D" No. 1-35
 Date 5-10-05 Sec. 35 Twp. 15 S Range 28 W
 Formation Test No. 5 Interval Tested From 4,226 ft. to 4,266 ft. Total Depth 4,266 ft.
 Formation Fort Scott

	<u>MUD PIT</u>	<u>RECOVERY</u>
Viscosity	<u>49</u> CP	<u>52</u> CP
Weight	<u>9.5</u>	<u>9.4</u>
Water Loss	<u>12.8</u> CC	<u>12.0</u> CC
PH Factor	<u>9.5</u>	<u>9.5</u>

	<u>RESISTIVITY</u>	<u>CHLORIDE CONTENT</u>
Recovery Water	<u>--</u> @ <u>--</u> °F.	<u>--</u> ppm
Recovery Mud	<u>.70</u> @ <u>80</u> °F.	<u>8,000</u> ppm
Recovery Mud Filtrate	<u>.76</u> @ <u>84</u> °F.	<u>7,200</u> ppm
Mud Pit Sample	<u>1.05</u> @ <u>54</u> °F.	<u>8,200</u> ppm
Mud Pit Sample Filtrate	<u>1.10</u> @ <u>56</u> °F.	<u>7,400</u> ppm

Sample Taken By ROGER D. FRIEDLY
 Witness By MIKE KIDWELL

Remarks Pit filtrate triton dish chlorides were 6,400 Ppm
Recovery filtrate triton dish chlorides were 6,200 Ppm

GENERAL INFORMATION

Client Information:

Company: TRANS PACIFIC OIL CORPORATION

Contact: ALAN BANTA

Phone: Fax: e-mail:

Site Information:

Contact: MIKE KIDWELL

Phone: Fax: e-mail:

Well Information:

Name: ROBERTS 'D' #1-35

Operator: TRANS PACIFIC OIL CORPORATION

Location-Downhole: DST #5 FT SCOTT 4,226' - 4,266'

Location-Surface: SEC 35-15S-28W GOVE COUNTY

Test Information:

Company: DIAMOND TESTING

Representative: ROGER D. FRIEDLY

Supervisor: MIKE KIDWELL

Test Type: CONVENTIONAL Job Number:

Test Unit: NO. 1

Start Date: 2005/05/10 Start Time: 04:27:00

End Date: 2005/05/10 End Time: 10:19:00

Report Date: Prepared By:

Remarks: Qualified By:

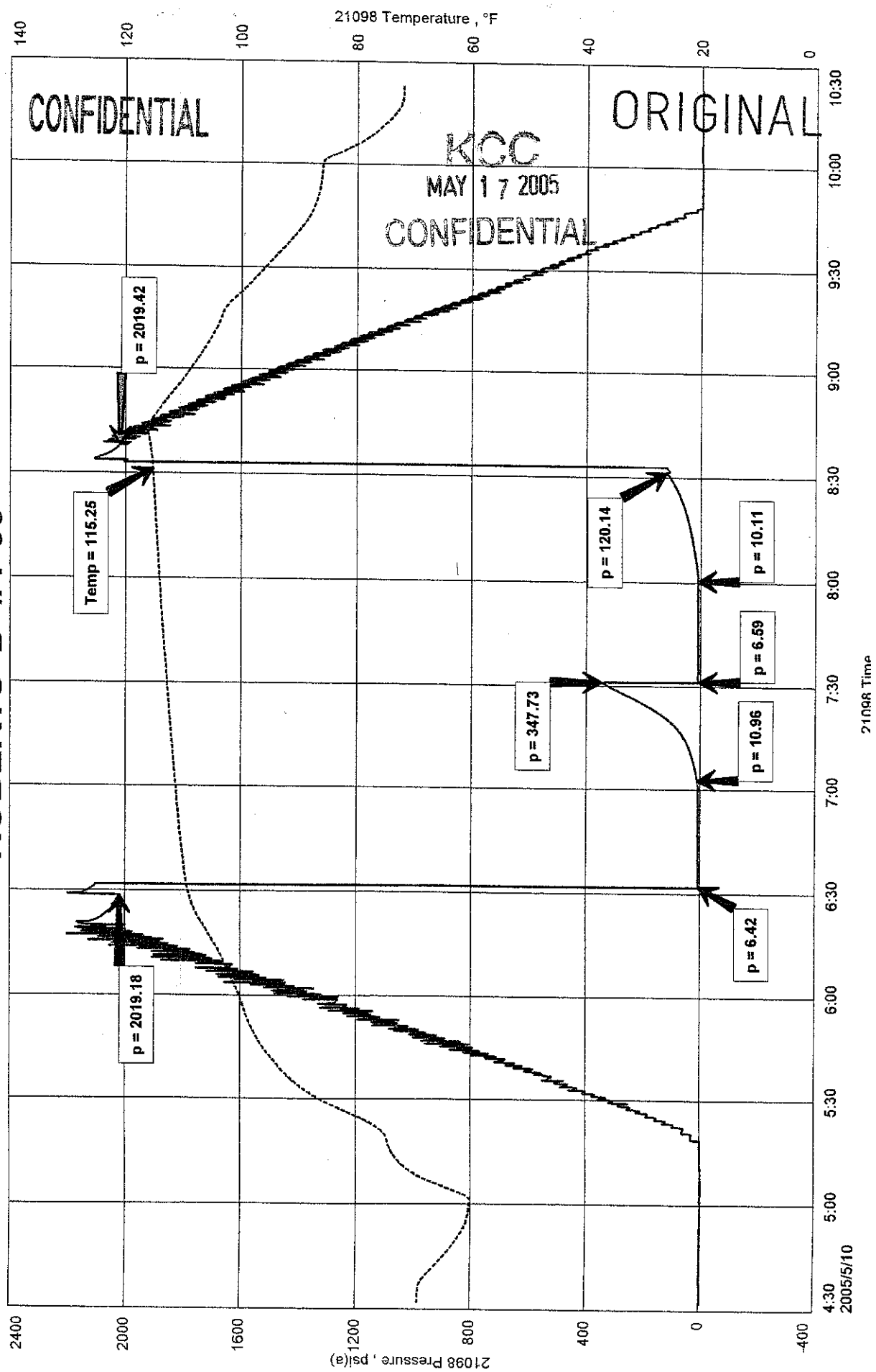
RECOVERED: 5' DRILLING MUD

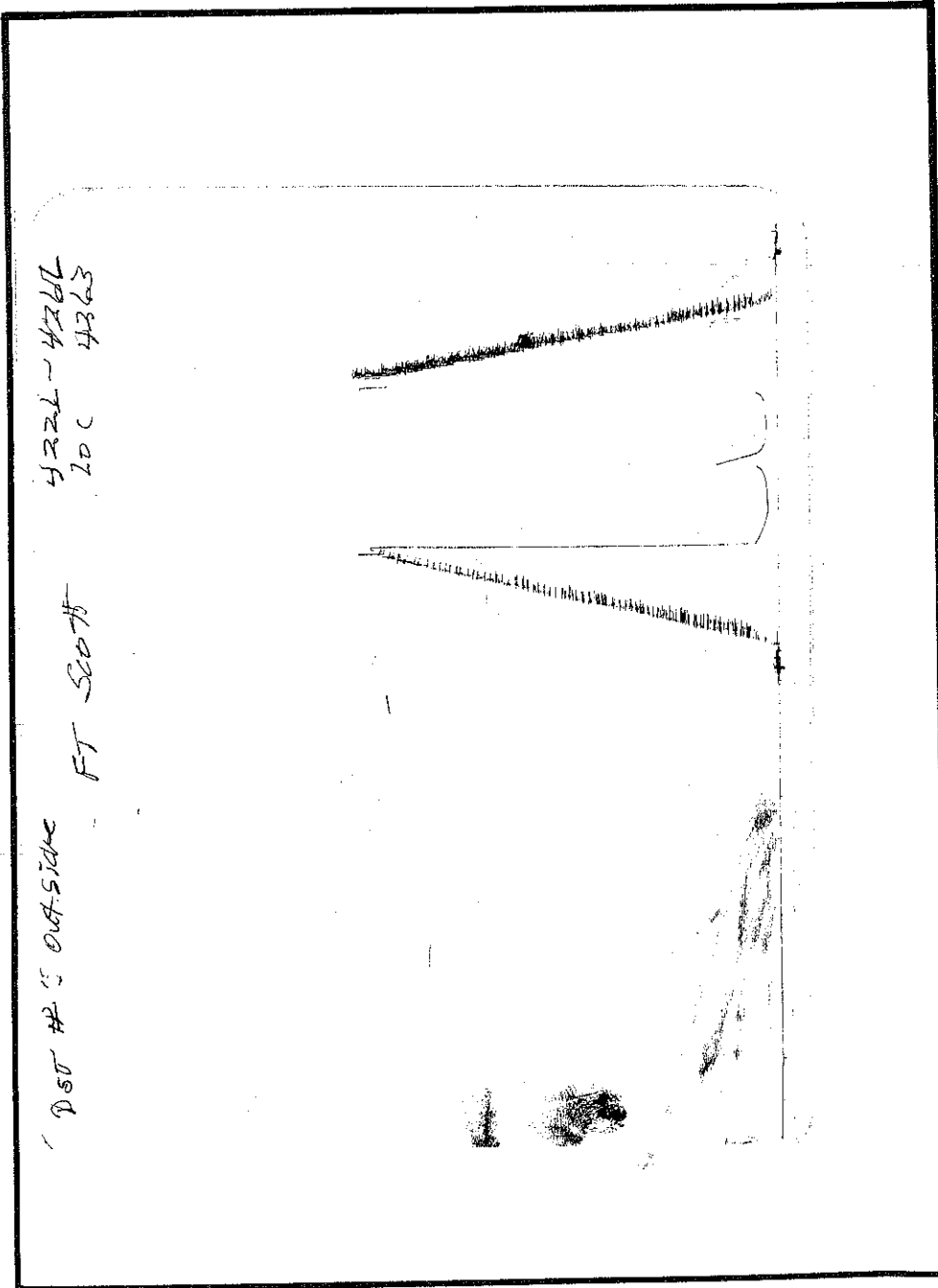
TOOL SAMPLE: 100% DRILLING MUD WITH A FEW OIL SPECKS.

ROBERTS 'D' #1-35
 Formation: DST #5 FT SCOTT 4,226' - 4,266'
 Pool: WILDCAT

TRANS PACIFIC OIL CORPORATION
 DST #5 FT SCOTT 4,226' - 4,266'
 Start Test Date: 2005/05/10
 Final Test Date: 2005/05/10

ROBERTS 'D' #1-35





This is an actual photograph of recorder chart.

POINT	PRESSURE	
	Field Reading	Elec. Office Reading
(A) Initial Hydrostatic Mud	2019	2019
(B) First Initial Flow Pressure	6	6
(C) First Final Flow Pressure	11	11
(D) Initial Closed-in Pressure	348	348
(E) Second Initial Flow Pressure	7	7
(F) Second Final Flow Pressure	10	10
(G) Final Closed-in Pressure	120	120