

15-063-21726

27-15s-28w

DIAMOND TESTING

P.O. Box 157

HOISINGTON, KANSAS 67544
(620) 653-7550 • (800) 542-7313

Page 1 of 2 Pages

Company Trans Pacific Oil Corporation Lease & Well No. Davis "C" No. 4-27
 Elevation 2486 KB Formation Lansing/Kansas City (140'-180') Effective Pay -- Ft. Ticket No. 2479
 Date 7-26-08 Sec. 27 Twp. 15S Range 28W County Gove State Kansas

Test Approved By Beth A. Isern Diamond Representative Roger D. Friedly

Formation Test No. 1 Interval Tested from 3,852 ft. to 3,934 ft. Total Depth 3,934 ft.
 Packer Depth 3,847 ft. Size 6 3/4 in. Packer Depth -- ft. Size -- in.
 Packer Depth 3,852 ft. Size 6 3/4 in. Packer Depth -- ft. Size -- in.
 Depth of Selective Zone Set ft.

Top Recorder Depth (Inside) 3,840 ft. Recorder Number 30044 Cap. 5,000 psi
 Bottom Recorder Depth (Outside) 3,931 ft. Recorder Number 3815 Cap. 5,700 psi
 Below Straddle Recorder Depth ft. Recorder Number Cap. psi

Drilling Contractor Duke Drilling Co., Inc. - Rig 4 Drill Collar Length -- ft. I.D. -- in.
 Mud Type Chemical Viscosity 50 Weight Pipe Length -- ft. I.D. -- in.
 Weight 9.1 Water Loss 10.8 cc. Drill Pipe Length 3,828 ft. I.D. 3 1/2 in.
 Chlorides 2,300 P.P.M. Test Tool Length 24 ft. Tool Size 3 1/2 - IF in.
 Jars: Make Sterling Serial Number Not Run Anchor Length 20' perf. w/ 62' drill pipe Size 4 1/2 - FH in.
 Did Well Flow? No Reversed Out No Surface Choke Size 1 in. Bottom Choke Size 5/8 in.
 Main Hole Size 7 7/8 in. Tool Joint Size 4 1/2 - XH in.

Blow: 1st Open: Weak, 1/4 in., blow increasing. Off bottom of bucket in 21 mins. No blow back during shut-in.
 2nd Open: Weak, surface blow in 3 mins. increasing. Off bottom of bucket in 29 mins. No blow back during shut-in.

Recovered 164 ft. of watery mud = 2.112320 bbls. (Grind out: 44%-water; 56%-mud)
 Recovered 124 ft. of muddy water = 1.597120 bbls. (Grind out: 35%-mud; 65%-water)
 Recovered 186 ft. of muddy water = 2.395680 bbls. (Grind out: 20%-mud; 80%-water) Chlorides: 44,000 Ppm
 Recovered 474 ft. of TOTAL FLUID = 6.105120 bbls.
 Recovered ft. of

Remarks Tool Sample Grind Out: 10%-mud; 90%-water with a scum of oil

Time Set Packer(s) 11:50 ^{A.M.} ~~P.M.~~ Time Started Off Bottom 3:50 ^{XXM.} ~~P.M.~~ Maximum Temperature 123°
 Initial Hydrostatic Pressure (A) 1811 P.S.I.
 Initial Flow Period Minutes 30 (B) 10 P.S.I. to (C) 96 P.S.I.
 Initial Closed In Period Minutes 60 (D) 1009 P.S.I.
 Final Flow Period Minutes 60 (E) 100 P.S.I. to (F) 226 P.S.I.
 Final Closed In Period Minutes 90 (G) 966 P.S.I.
 Final Hydrostatic Pressure (H) 1804 P.S.I.

GENERAL INFORMATION

Client Information:

Company: TRANS PACIFIC OIL CORPORATION
Contact: ALAN BANTA
Phone: Fax: e-mail:

Site Information:

Contact: BETH ISERN
Phone: Fax: e-mail:

Well Information:

Name: DAVIS 'C' #4-27
Operator: DUKE RIG 4
Location-Downhole: DST #1 LKC 140'-180' 3,852' - 3,934'
Location-Surface: SEC 27-15S-28W GOVE COUNTY

Test Information:

Company: DIAMOND TESTING
Representative: ROGER D. FRIEDLY
Supervisor: BETH ISERN
Test Type: CONVENTIONAL Job Number:
Test Unit: NO. 3
Start Date: 2008/07/26 Start Time: 09:24:00
End Date: 2008/07/26 End Time: 17:49:00
Report Date: Prepared By:
Remarks: Qualified By:

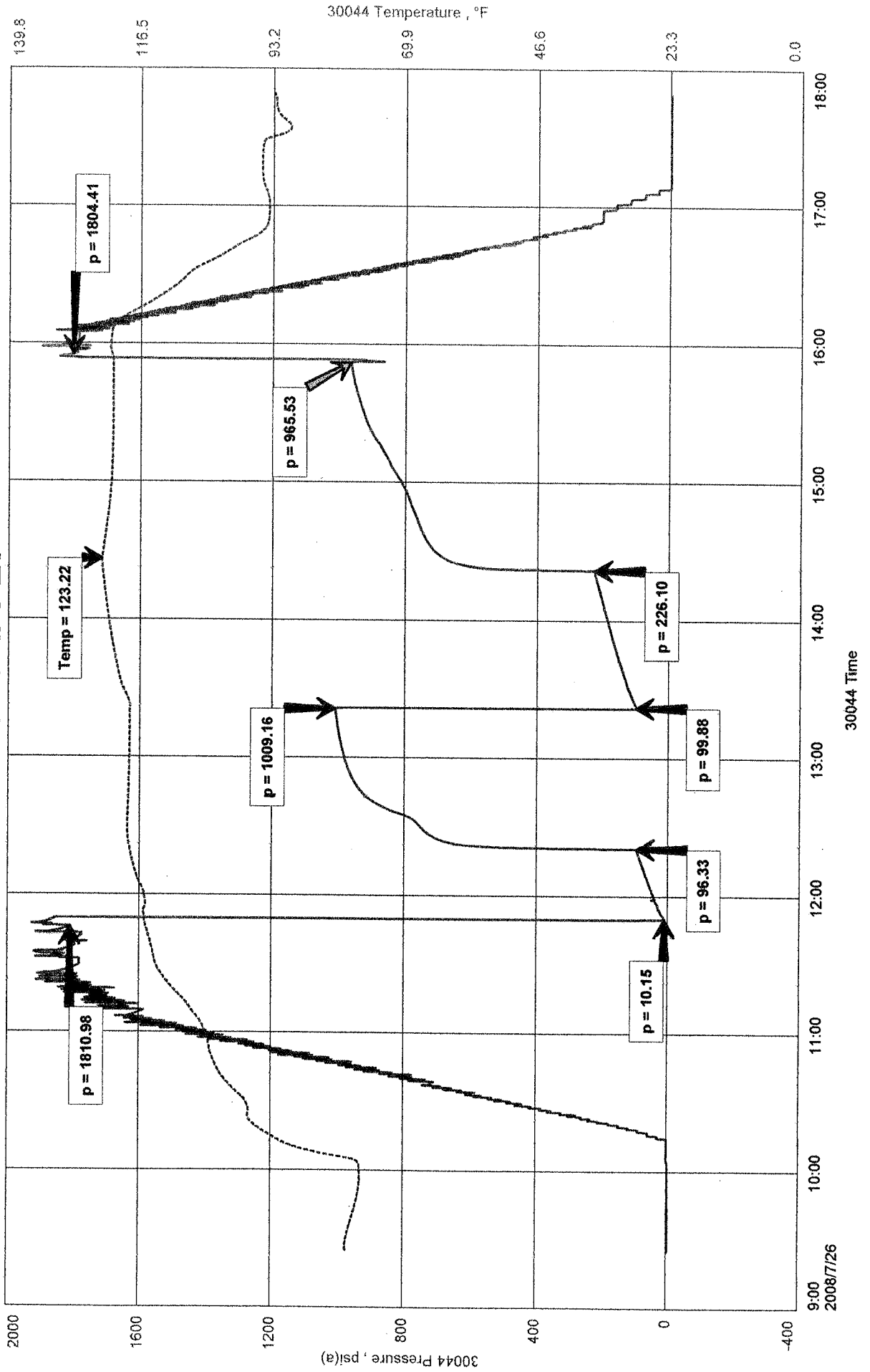
RECOVERED: 164' WM 44% WTR, 56% MUD
124' MW 35% MUD, 65% WTR
186' MW 20% MUD, 80% WTR (CHLORIDES 44,000 Ppm)
474' TOTAL FLUID

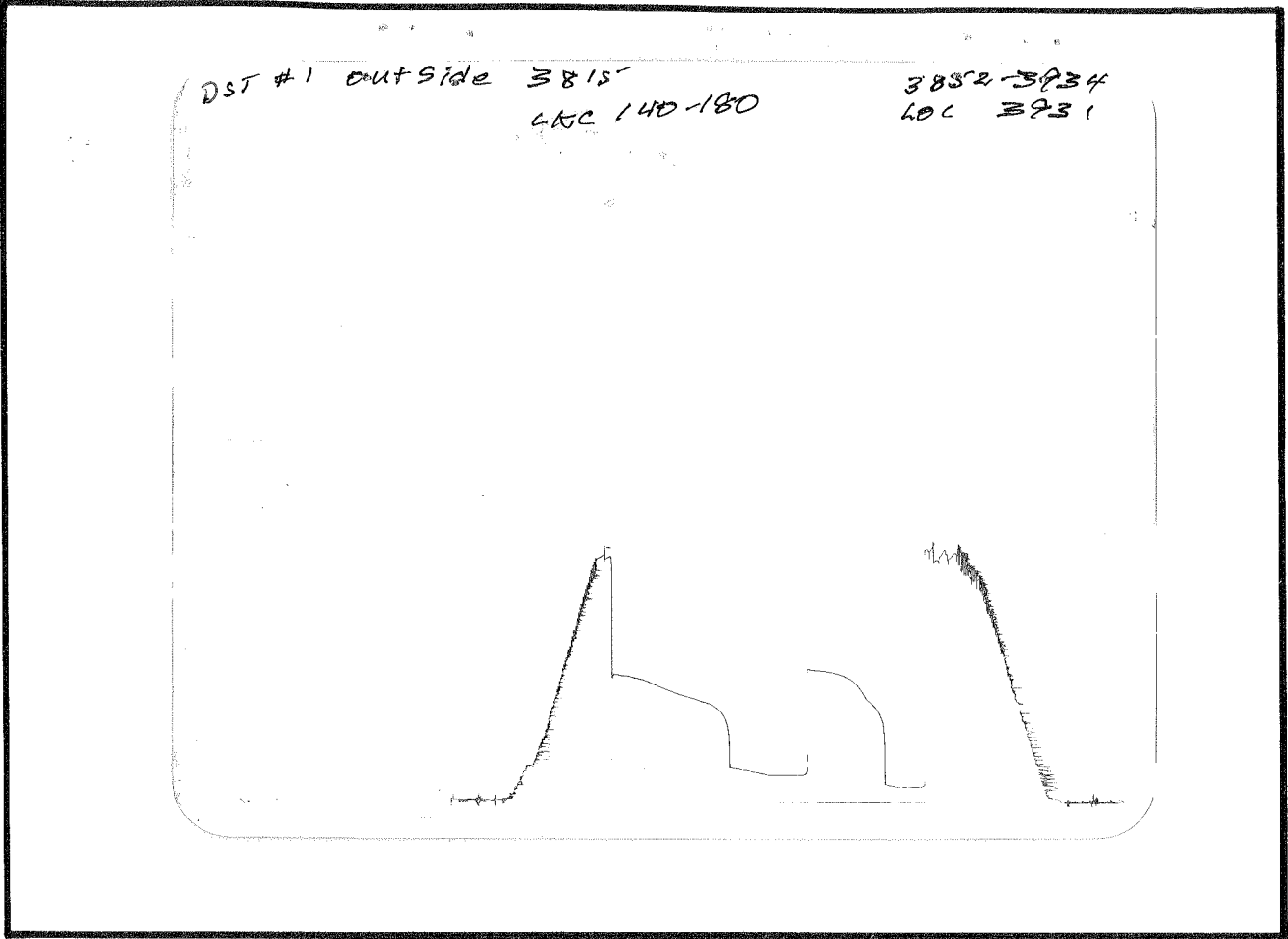
TOOL SAMPLE: 10% MUD, 90% WTR WITH A SCUM OF OIL

TRANS PACIFIC OIL CORPORATION
DST #1 LKC 140'-180' 3,852' - 3,934'
Start Test Date: 2008/07/26
Final Test Date: 2008/07/26

DAVIS 'C' #4-27
Formation: DST #1 LKC 140' -180' 3,852' - 3,934'
Pool: WILDCAT

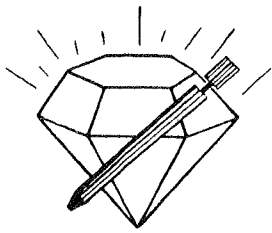
DAVIS 'C' #4-27





This is an actual photograph of recorder chart.

POINT	PRESSURE Elec.		
	Field Reading	Office Reading	
(A) Initial Hydrostatic Mud	1811	1811	PSI
(B) First Initial Flow Pressure.....	10	10	PSI
(C) First Final Flow Pressure	96	96	PSI
(D) Initial Closed-in Pressure	1009	1009	PSI
(E) Second Initial Flow Pressure	100	100	PSI
(F) Second Final Flow Pressure.....	226	226	PSI
(G) Final Closed-in Pressure.....	966	966	PSI
(H) Final Hydrostatic Mud	1804	1804	PSI



DIAMOND TESTING

P.O. Box 157
HOISINGTON, KANSAS 67544
(620) 653-7550 • (800) 542-7313

Company Trans Pacific Oil Corporation Lease & Well No. Davis "C" No. 4-27
Elevation 2486 KB Formation Lansing/Kansas City (200') Effective Pay -- Ft. Ticket No. 2480
Date 7-27-08 Sec. 27 Twp. 15S Range 28W County Gove State Kansas
Test Approved By Beth A. Isern Diamond Representative Roger D. Friedly

Formation Test No. 2 Interval Tested from 3,932 ft. to 3,962 ft. Total Depth 3,962 ft.
Packer Depth 3,927 ft. Size 6 3/4 in. Packer Depth -- ft. Size -- in.
Packer Depth 3,932 ft. Size 6 3/4 in. Packer Depth -- ft. Size -- in.
Depth of Selective Zone Set ft.

Top Recorder Depth (Inside) 3,920 ft. Recorder Number 30044 Cap. 5,000 psi
Bottom Recorder Depth (Outside) 3,959 ft. Recorder Number 3815 Cap. 5,700 psi
Below Straddle Recorder Depth ft. Recorder Number psi

Drilling Contractor Duke Drilling Co., Inc. - Rig 4 Drill Collar Length -- ft. I.D. -- in.
Mud Type Chemical Viscosity 53 Weight Pipe Length -- ft. I.D. -- in.
Weight 9.1 Water Loss 10.8 cc. Drill Pipe Length 3,908 ft. I.D. 3 1/2 in.
Chlorides 2,300 P.P.M. Test Tool Length 24 ft. Tool Size 3 1/2 - IF in.
Jars: Make Sterling Serial Number Not Run Anchor Length 30 ft. Size 4 1/2 - FH in.
Did Well Flow? No Reversed Out No Surface Choke Size 1 in. Bottom Choke Size 5/8 in.
Main Hole Size 7 7/8 in. Tool Joint Size 4 1/2 - XH in.

Blow: 1st Open: Weak, 1/8 in., blow increasing to 4 1/2 ins. No blow back during shut-in.
2nd Open: Weak, surface blow in 5 mins. Increasing to 2 1/2 ins. No blow back during shut-in.

Recovered 30 ft. of gas in pipe
Recovered 3 ft. of clean oil = .038640 bbls. (Gravity: 35.2 @ 60°)
Recovered 27 ft. of water cut oily mud = .347760 bbls. (Grind out: 15%-water; 38%-oil; 47%-mud)
Recovered 30 ft. of gas & oil cut watery mud = .386400 bbls. (Grind out: 4%-gas; 10%-oil; 26%-water; 60%-mud)
Recovered 60 ft. of TOTAL FLUID = .772800 bbls.

Remarks Tool Sample Grind out: 6%-oil; 46%-mud; 48%-water Chlorides: 26,000 Ppm

Time Set Packer(s) 3:30 ~~XXX~~ ^{A.M.} Time Started Off Bottom 7:30 ~~P.M.~~ ^{A.M.} Maximum Temperature 119°
Initial Hydrostatic Pressure (A) 1858 P.S.I.
Initial Flow Period Minutes 30 (B) 8 P.S.I. to (C) 17 P.S.I.
Initial Closed In Period Minutes 60 (D) 305 P.S.I.
Final Flow Period Minutes 60 (E) 19 P.S.I. to (F) 33 P.S.I.
Final Closed In Period Minutes 90 (G) 238 P.S.I.
Final Hydrostatic Pressure (H) 1859 P.S.I.

GENERAL INFORMATION

Client Information:

Company: TRANS PACIFIC OIL CORPORATION
Contact: ALAN BANTA
Phone: Fax: e-mail:

Site Information:

Contact: BETH ISERN
Phone: Fax: e-mail:

Well Information:

Name: DAVIS 'C' #4-27
Operator: DUKE RIG 4
Location-Downhole: DST #2 LKC 200' 3,932' - 3,962'
Location-Surface: SEC 27-15S-28W GOVE COUNTY

Test Information:

Company: DIAMOND TESTING
Representative: ROGER D. FRIEDLY
Supervisor: BETH ISERN
Test Type: CONVENTIONAL Job Number:
Test Unit: NO. 3
Start Date: 2008/07/27 Start Time: 01:09:00
End Date: 2008/07/27 End Time: 09:28:00
Report Date: Prepared By:
Remarks: Qualified By:

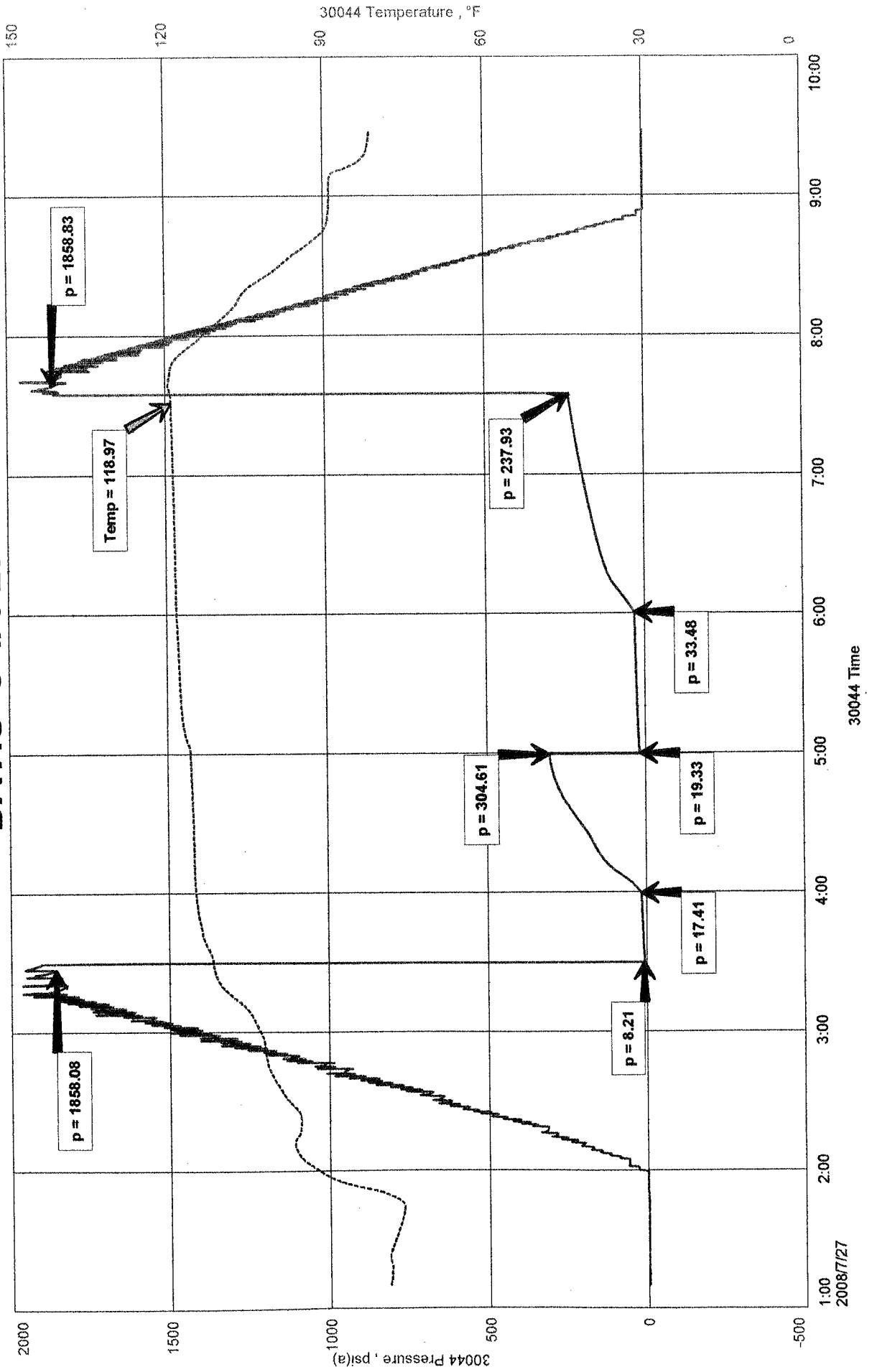
RECOVERED: 30' GAS IN PIPE
3' CLEAN OIL 35.2 GRAVITY @ 60 deg.
27' WCOM 15% WTR, 38% OIL, 47% MUD
30' G&OCWM 4% GAS, 10% OIL, 26% WTR, 60% MUD
60' TOTAL FLUID

TOOL SAMPLE: 6% OIL, 46% MUD, 48% WTR CHLORIDES 26,000 Ppm

DAVIS 'C' #4-27
Formation: DST #2 LKC 200' 3,932' - 3,962'
Pool: WILDCAT

TRANS PACIFIC OIL CORPORATION
DST #2 LKC 200' 3,932' - 3,962'
Start Test Date: 2008/07/27
Final Test Date: 2008/07/27

DAVIS 'C' #4-27

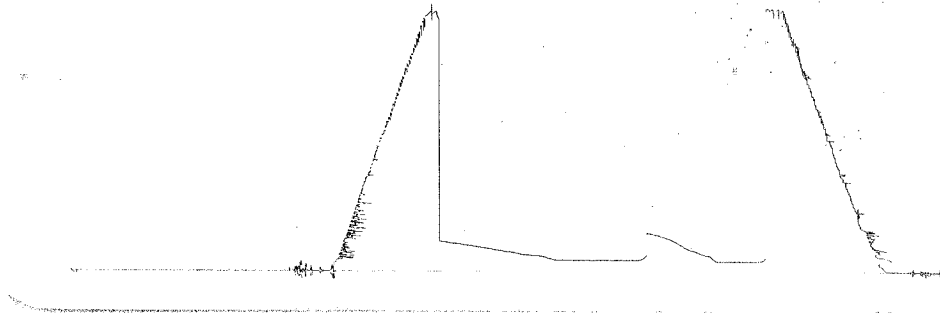


DST # 2 Outside 2815

WCC 200'

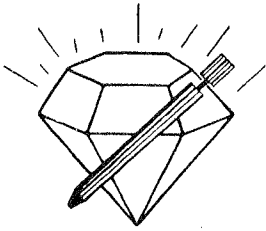
3832-3962

WOC 3259



This is an actual photograph of recorder chart.

POINT	PRESSURE		PSI
	Field Reading	Elec. Office Reading	
(A) Initial Hydrostatic Mud	1858	1858	PSI
(B) First Initial Flow Pressure.....	8	8	PSI
(C) First Final Flow Pressure	17	17	PSI
(D) Initial Closed-in Pressure	305	305	PSI
(E) Second Initial Flow Pressure.....	19	19	PSI
(F) Second Final Flow Pressure.....	33	33	PSI
(G) Final Closed-in Pressure.....	238	238	PSI
(H) Final Hydrostatic Mud	1859	1859	PSI



DIAMOND TESTING

P.O. Box 157

HOISINGTON, KANSAS 67544

(620) 653-7550 • (800) 542-7313

Page 1 of 2 Pages

Company Trans Pacific Oil Corporation Lease & Well No. Davis "C" No. 4-27
 Elevation 2486 KB Formation Lansing/Kansas City (220')/Marmaton Effective Pay -- Ft. Ticket No. 2481
 Date 7-28-08 Sec. 27 Twp. 15S Range 28W County Gove State Kansas
 Test Approved By Beth A. Isern Diamond Representative Roger D. Friedly

Formation Test No. 3 Interval Tested from 3,964 ft. to 4,040 ft. Total Depth 4,040 ft.
 Packer Depth 3,959 ft. Size 6 3/4 in. Packer Depth -- ft. Size -- in.
 Packer Depth 3,964 ft. Size 6 3/4 in. Packer Depth -- ft. Size -- in.
 Depth of Selective Zone Set ft.

Top Recorder Depth (Inside) 3,952 ft. Recorder Number 30044 Cap. 5,000 psi
 Bottom Recorder Depth (Outside) 4,037 ft. Recorder Number 3815 Cap. 5,700 psi
 Below Straddle Recorder Depth ft. Recorder Number Cap. psi

Drilling Contractor Duke Drilling Co., Inc. - Rig 4 Drill Collar Length -- ft. I.D. -- in.
 Mud Type Chemical Viscosity 44 Weight Pipe Length -- ft. I.D. -- in.
 Weight 9.2 Water Loss 11.2 cc. Drill Pipe Length 3,940 ft. I.D. 3 1/2 in.
 Chlorides 2,700 P.P.M. Test Tool Length 24 ft. Tool Size 3 1/2 - IF in.
 Jars: Make Sterling Serial Number Not Run Anchor Length 45' perf. w/ 31' drill pipe Size 4 1/2 - FH in.
 Did Well Flow? No Reversed Out No Surface Choke Size 1 in. Bottom Choke Size 5/8 in.
 Main Hole Size 7/8 in. Tool Joint Size 4 1/2 - XH in.

Blow: 1st Open: Weak, 1/8 in., blow increasing to 1/2 in. Decreasing in 23 mins. to 1/2 in. at end. No blow back during shut-in.
 2nd Open: No blow. No blow back during shut-in.

Recovered 15 ft. of drilling mud = .193200 bbls. (Grind out: 100%-mud)
 Recovered ft. of
 Recovered ft. of
 Recovered ft. of
 Recovered ft. of

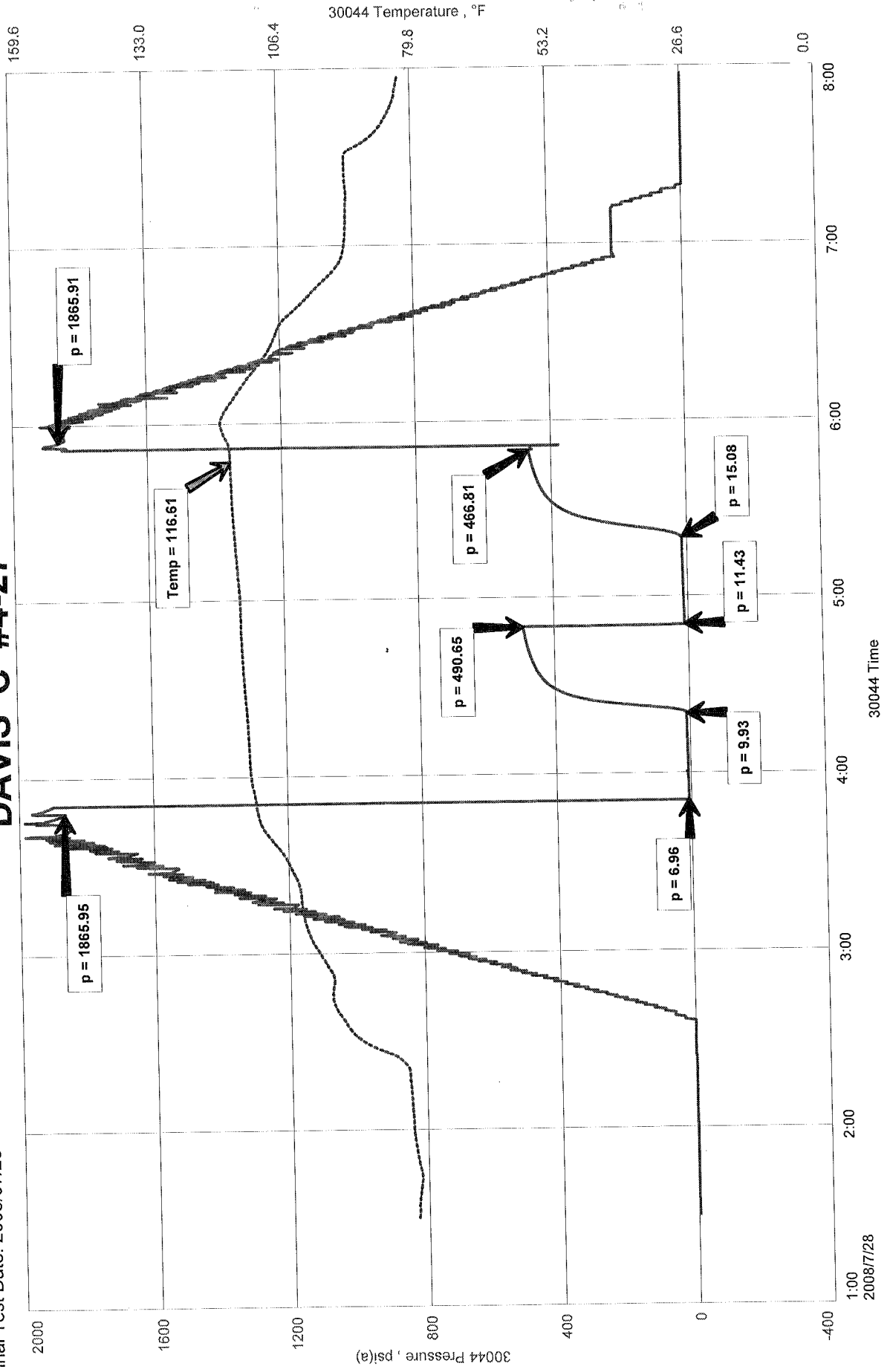
Remarks Tool Sample Grind Out: 100%-drilling mud with a few oil specks

Time Set Packer(s) 3:51 ^{A.M.}/_{P.M.} Time Started Off Bottom 5:51 ^{A.M.}/_{P.M.} Maximum Temperature 117°
 Initial Hydrostatic Pressure (A) 1866 P.S.I.
 Initial Flow Period Minutes 30 (B) 7 P.S.I. to (C) 10 P.S.I.
 Initial Closed In Period Minutes 30 (D) 491 P.S.I.
 Final Flow Period Minutes 30 (E) 11 P.S.I. to (F) 15 P.S.I.
 Final Closed In Period Minutes 30 (G) 467 P.S.I.
 Final Hydrostatic Pressure (H) 1866 P.S.I.

DAVIS 'C' #4-27
 Formation: DST #3 LKC 220'-MARMATON 3,964' - 4,040'
 Pool: WILDCAT

TRANS PACIFIC OIL CORPORATION
 DST #3 LKC 220'-MARMATON 3,964' - 4,040'
 Start Test Date: 2008/07/28
 Final Test Date: 2008/07/28

DAVIS 'C' #4-27

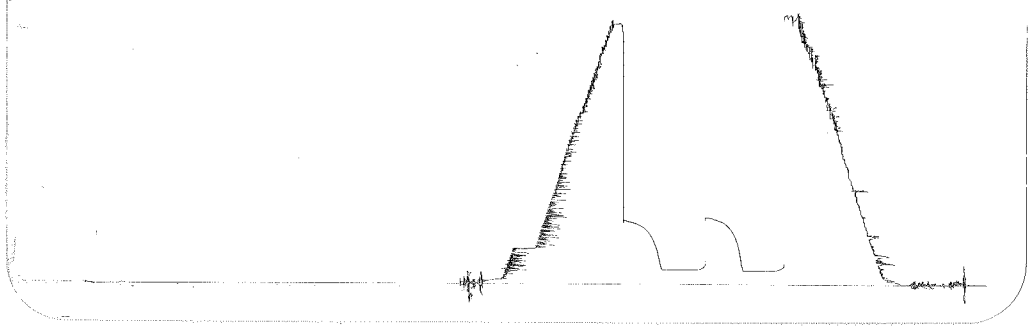


DST #3 outside 3815

LKC 220/5722.1M

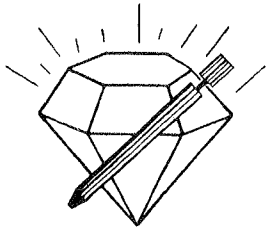
3964-4040

NOL 4857



This is an actual photograph of recorder chart.

POINT	PRESSURE Elec.		
	Field Reading	Office Reading	
(A) Initial Hydrostatic Mud	1866	1866	PSI
(B) First Initial Flow Pressure.....	7	7	PSI
(C) First Final Flow Pressure	10	10	PSI
(D) Initial Closed-in Pressure	491	491	PSI
(E) Second Initial Flow Pressure.....	11	11	PSI
(F) Second Final Flow Pressure.....	15	15	PSI
(G) Final Closed-in Pressure.....	467	467	PSI
(H) Final Hydrostatic Mud.....	1866	1866	PSI



DIAMOND TESTING

P.O. Box 157
HOISINGTON, KANSAS 67544
(620) 653-7550 • (800) 542-7313

Company Trans Pacific Oil Corporation Lease & Well No. Davis "C" No. 4-27
Elevation 2486 KB Formation Altamont Effective Pay -- Ft. Ticket No. 2482
Date 7-28-08 Sec. 27 Twp. 15S Range 28W County Gove State Kansas

Test Approved By Beth A. Isern Diamond Representative Roger D. Friedly

Formation Test No. 4 Interval Tested from 4,046 ft. to 4,110 ft. Total Depth 4,110 ft.

Packer Depth 4,041 ft. Size 6 3/4 in. Packer Depth -- ft. Size -- in.

Packer Depth 4,046 ft. Size 6 3/4 in. Packer Depth -- ft. Size -- in.

Depth of Selective Zone Set ft.

Top Recorder Depth (Inside) 4,034 ft. Recorder Number 30044 Cap. 5,000 psi

Bottom Recorder Depth (Outside) 4,107 ft. Recorder Number 3815 Cap. 5,700 psi

Below Straddle Recorder Depth ft. Recorder Number Cap. psi

Drilling Contractor Duke Drilling Co., Inc. - Rig 4 Drill Collar Length -- ft. I.D. -- in.

Mud Type Chemical Viscosity 45 Weight Pipe Length -- ft. I.D. -- in.

Weight 9.1 Water Loss 9.6 cc. Drill Pipe Length 4,022 ft. I.D. 3 1/2 in.

Chlorides 2,600 P.P.M. Test Tool Length 24 ft. Tool Size 3 1/2 - IF in.

Jars: Make Sterling Serial Number Not Run Anchor Length 34' perf w/ 30' drill pipe Size 4 1/2 - FH in.

Did Well Flow? No Reversed Out No Surface Choke Size 1 in. Bottom Choke Size 5/8 in.

Main Hole Size 7/8 in. Tool Joint Size 4 1/2 - XH in.

Blow: 1st Open: Fair, 1 in., blow increasing. Off bottom of bucket in 3 3/4 mins. No blow back during shut-in.

2nd Open: Weak, 1/4 in., blow increasing. Off bottom of bucket in 6 mins. No blow back during shut-in.

Recovered 226 ft. of watery mud = 2.910880 bbls. (Grind out: 36%-water; 64%-mud)

Recovered 248 ft. of muddy water = 3.194240 bbls. (Grind out: 26%-mud; 74%-water)

Recovered 806 ft. of salt water = 10.381280 bbls. (Grind out: 100%-water) Chlorides: 53,000 Ppm

Recovered 1,280 ft. of TOTAL FLUID = 16.486400 bbls.

Recovered ft. of

Remarks Tool Sample Grind Out: 100%-salt water with good oil spots

Time Set Packer(s) 7:03 P.M. Time Started Off Bottom 11:18 P.M. Maximum Temperature 130°

Initial Hydrostatic Pressure (A) 1921 P.S.I.

Initial Flow Period Minutes 30 (B) 45 P.S.I. to (C) 297 P.S.I.

Initial Closed In Period Minutes 75 (D) 958 P.S.I.

Final Flow Period Minutes 60 (E) 307 P.S.I. to (F) 597 P.S.I.

Final Closed In Period Minutes 90 (G) 871 P.S.I.

Final Hydrostatic Pressure (H) 1915 P.S.I.

GENERAL INFORMATION

Client Information:

Company: TRANS PACIFIC OIL CORPORATION
Contact: ALAN BANTA
Phone: Fax: e-mail:

Site Information:

Contact: BETH ISERN
Phone: Fax: e-mail:

Well Information:

Name: DAVIS 'C' #4-27
Operator: DUKE RIG 4
Location-Downhole: DST #4 ALTAMONT 4,046' - 4,110'
Location-Surface: SEC 22-15S-28W GOVE COUNTY

Test Information:

Company: DIAMOND TESTING
Representative: ROGER D. FRIEDLY
Supervisor: BETH ISERN
Test Type: CONVENTIONAL Job Number:
Test Unit: NO. 3
Start Date: 2008/07/28 Start Time: 17:14:00
End Date: 2008/07/29 End Time: 02:35:00
Report Date: Prepared By:
Remarks: Qualified By:

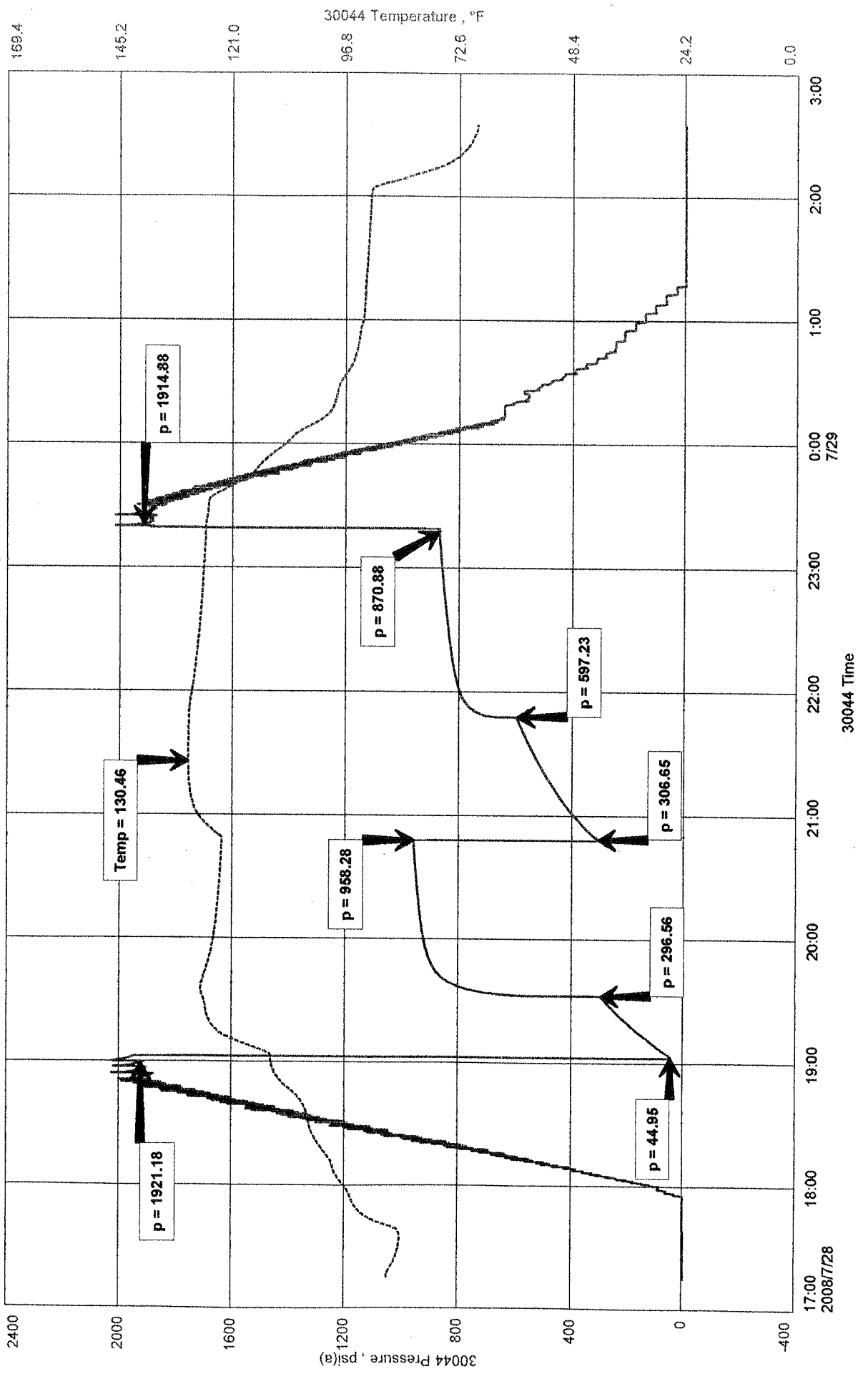
RECOVERED: 226' WM 36% WTR, 64% MUD
248' MW 26% MUD, 74% WTR
806' SW 100% WTR CHLORIDES 53,000 Ppm
1,280' TOTAL FLUID

TOOL SAMPLE: 100% SW WITH GOOD OIL SPOTS

TRANS PACIFIC OIL CORPORATION
DST #4 ALTAMONT 4,046' - 4,110'
Start Test Date: 2008/07/28
Final Test Date: 2008/07/29

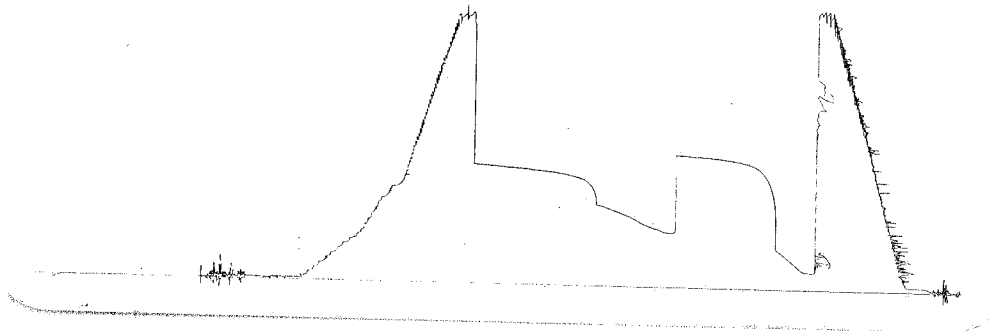
DAVIS 'C' #4-27
Formation: DST #4 ALTAMONT 4,046' - 4,110'
Pool: WILDCAT

DAVIS 'C' #4-27



DST # 4 outside 3815
 Attempt

NO4L-4110
 LOC 4107



This is an actual photograph of recorder chart.

POINT	PRESSURE		PSI
	Field Reading	Elec. Office Reading	
(A) Initial Hydrostatic Mud	1921	1921	PSI
(B) First Initial Flow Pressure.....	45	45	PSI
(C) First Final Flow Pressure	297	297	PSI
(D) Initial Closed-in Pressure	958	958	PSI
(E) Second Initial Flow Pressure	307	307	PSI
(F) Second Final Flow Pressure.....	597	597	PSI
(G) Final Closed-in Pressure.....	871	871	PSI
(H) Final Hydrostatic Mud.....	1915	1915	PSI