



DIAMOND TESTING

P.O. Box 157

HOISINGTON, KANSAS 67544

620 653-7550 • (800) 542-7313  
STC 21076.D01

ORIGINAL

Page 1 of 3 Pages

CONFIDENTIAL

Company Trans Pacific Oil Corporation Lease & Well No. Davis "D" No. 1-34

Elevation 2545 KB Formation Lansing "B" Effective Pay -- Ft. Ticket No. 1828

Date 1-29-04 Sec. 34 Twp. 15S Range 28W County Gove State Kansas

Test Approved By Mike Kidwell Diamond Representative Roger D. Friedly

Formation Test No. 1 Interval Tested from 3,756 ft. to 3,778 ft. Total Depth 3,778 ft.

Packer Depth 3,751 ft. Size 6 3/4 in. Packer Depth -- ft. Size -- in.

Packer Depth 3,756 ft. Size 6 3/4 in. Packer Depth -- ft. Size -- in.

Depth of Selective Zone Set ft.

Top Recorder Depth (Inside) 3,742 ft. Recorder Number Elec. Cap. 5,000 psi

Bottom Recorder Depth (Outside) 3,775 ft. Recorder Number 13386 Cap. 4,000 psi

Below Straddle Recorder Depth ft. Recorder Number psi

Drilling Contractor Pickrell Drilling Co., Inc. - Rig 10 Drill Collar Length 119 ft. I.D. 2 1/4 in.

Mud Type Chemical Viscosity 44 Weight Pipe Length -- ft. I.D. -- in.

Weight 9.2 Water Loss 8.8 cc. Drill Pipe Length 3,610 ft. I.D. 3 1/2 in.

Chlorides 3,000 P.P.M. Test Tool Length 27 ft. Tool Size 3 1/2 - IF in.

Jars: Make Bowen Serial Number Not Run Anchor Length 22 ft. Size 4 1/2 - FH in.

Did Well Flow? No Reversed Out No Surface Choke Size 1 in. Bottom Choke Size 5/8 in.

Main Hole Size 7 7/8 in. Tool Joint Size 4 1/2 - XH in.

Blow: 1st Open: Weak, 1/8 in., blow increasing to 5 ins. No blow back during shut-in.

2nd Open: Weak surface blow increasing to 6 ins. No blow back during shut-in.

Recovered 187 ft. of salt water with good oil spots on tool = 1.551080 bbls.

Recovered ft. of KCC

Recovered ft. of MAR 3

Recovered ft. of CONFIDENTIAL

Recovered ft. of CONFIDENTIAL

Remarks Tool Sample Grind Out: All salt water with a few oil specks.

Time Set Packer(s) 4:20 <sup>XXX</sup> P.M. Time Started Off Bottom 7:20 <sup>XXX</sup> P.M. Maximum Temperature 113°

Initial Hydrostatic Pressure ..... (A) 1779 P.S.I.

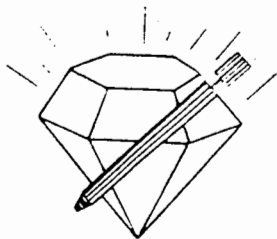
Initial Flow Period ..... Minutes 30 (B) 17 P.S.I. to (C) 74 P.S.I.

Initial Closed In Period ..... Minutes 45 (D) 1046 P.S.I.

Final Flow Period ..... Minutes 45 (E) 77 P.S.I. to (F) 111 P.S.I.

Final Closed In Period ..... Minutes 60 (G) 1012 P.S.I.

Final Hydrostatic Pressure ..... (H) 1769 P.S.I.



**DIAMOND TESTING**  
P. O. Box 157  
HOISINGTON, KANSAS 67544  
(800) 542-7313

**FLUID SAMPLE DATA**

Company Trans Pacific Oil Corporation  
Lease & Well No. Davis "D" No. 1-34  
Date 1-29-04 Sec. 34 Twp. 15 S Range 28 W  
Formation Test No. 1 Interval Tested From 3,756 ft. to 3,778 ft. Total Depth 3,778 ft.  
Formation Lansing "B"

|            | <u>MUD PIT</u> | <u>RECOVERY</u> |                            |
|------------|----------------|-----------------|----------------------------|
| Viscosity  | <u>44</u> CP   | <u>--</u> CP    |                            |
| Weight     | <u>9.2</u>     | <u>--</u>       |                            |
| Water Loss | <u>8.8</u> CC  | <u>--</u> CC    |                            |
| PH Factor  | <u>9.0</u>     | <u>--</u>       | <u>Water</u><br><u>7.0</u> |

|                         | <u>RESISTIVITY</u>         | <u>CHLORIDE</u><br><u>CONTENT</u> |
|-------------------------|----------------------------|-----------------------------------|
| Recovery Water          | <u>.10</u> @ <u>73</u> °F. | <u>68,000</u> ppm                 |
| Recovery Mud            | <u>--</u> @ <u>--</u> °F.  | <u>--</u> ppm                     |
| Recovery Mud Filtrate   | <u>--</u> @ <u>--</u> °F.  | <u>--</u> ppm                     |
| Mud Pit Sample          | <u>.92</u> @ <u>62</u> °F. | <u>8,000</u> ppm                  |
| Mud Pit Sample Filtrate | <u>.96</u> @ <u>62</u> °F. | <u>7,500</u> ppm                  |

Sample Taken By ROGER D. FRIEDLY

Witness By Mike Kidwell

Remarks Pit filtrate triton dish chlorides were 3,000 Ppm.  
Recovery water dish chlorides were 44,000 Ppm.

## GENERAL INFORMATION

### Client Information:

Company: TRANS PACIFIC OIL CORP  
Contact: ALAN BANTA & GARY SHARP  
Phone: Fax: e-mail:

### Site Information:

Contact: MIKE KIDWELL  
Phone: Fax: e-mail:

### Well Information:

Name: #1-34 DAVIS 'D'  
Operator: TRANS PACIFIC OIL CORP  
Location-Downhole: LANS 'B' 3756'-3778'  
Location-Surface: NE SE SE SEC 34-15S-28W GOVE COUNTY

### Test Information:

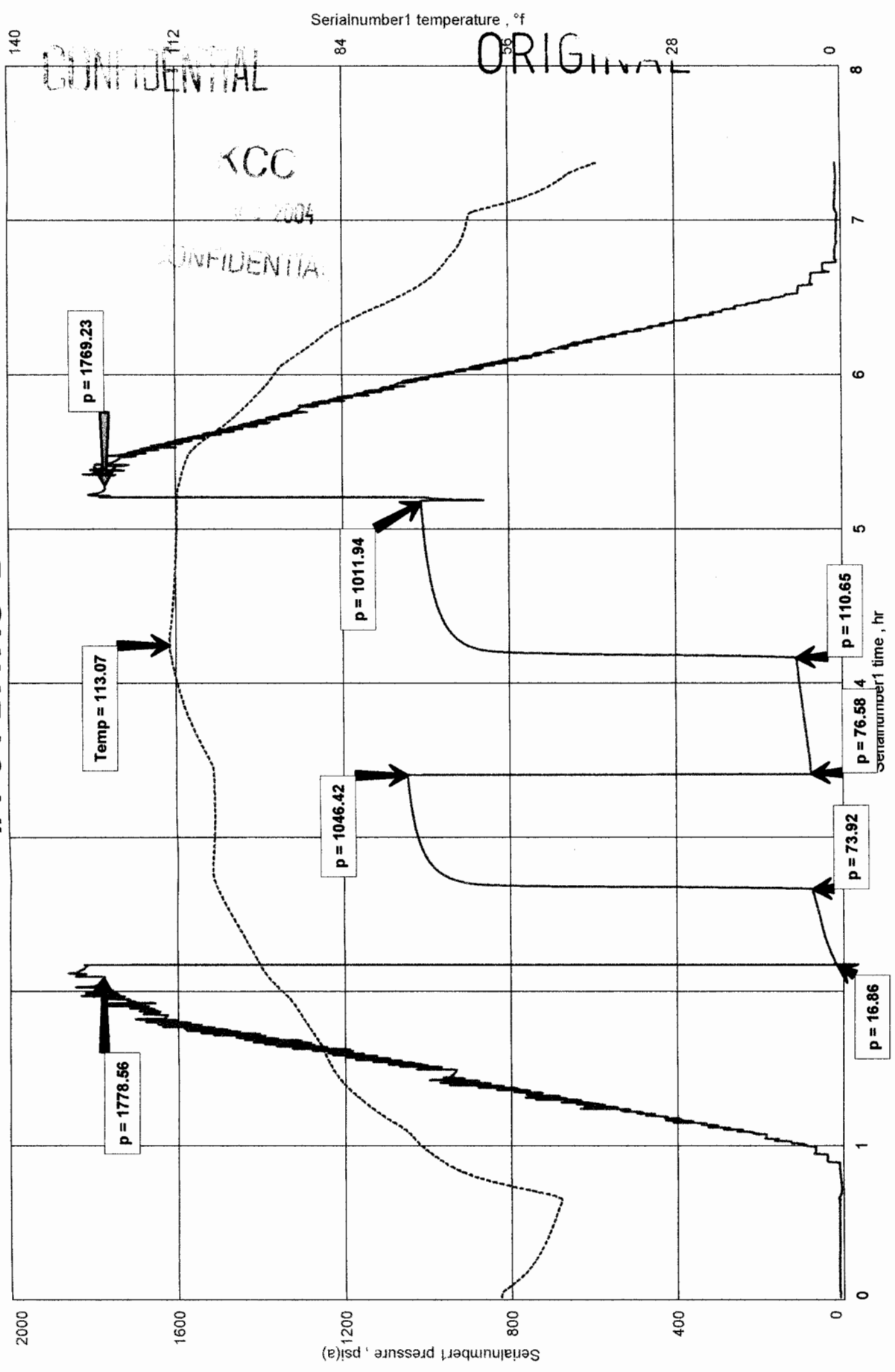
|                 |                  |               |          |
|-----------------|------------------|---------------|----------|
| Company:        | DIAMOND TESTING  |               |          |
| Representative: | ROGER D. FRIEDLY |               |          |
| Supervisor:     | MIKE KIDWELL     |               |          |
| Test Type:      | CONVENTIONAL     | Job Number:   |          |
| Test Unit:      | NO 1             |               |          |
| Start Date:     | 2004/12/29       | Start Time:   | 14:10:00 |
| End Date:       | 2004/01/29       | End Time:     | 21:15:20 |
| Report Date:    |                  | Prepared By:  |          |
| <u>Remarks:</u> |                  | Qualified By: |          |

RECOVERED 187' SW

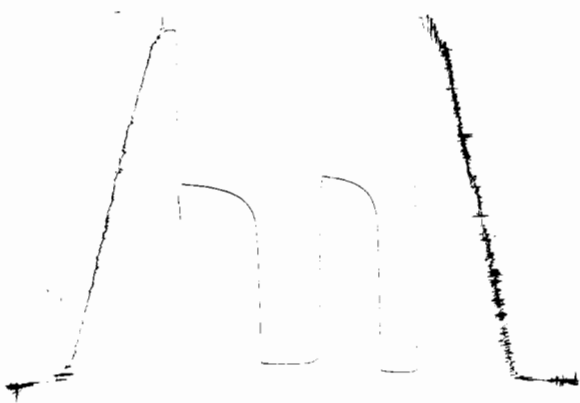
#1-34 DAVIS 'D'  
 Formation: LANS 'B' 3756'-3778'  
 Pool: WILDCAT

TRANS PACIFIC OIL CORP  
 LANS 'B' 3756'-3778'  
 Start Test Date: 2004/12/29  
 Final Test Date: 2004/01/29

# #1-34 DAVIS 'D'



DST # 1 outside 13386      3756-3778  
 LANS B                      LOL 3775





DIAMOND TESTING

P.O. Box 157

HOISINGTON, KANSAS 67544

(620) 653-7550 • (800) 542-7313  
STC 21076.D02

ORIGINAL

Page 1 of 3 Pages

CONFIDENTIAL

Company Trans Pacific Oil Corporation Lease & Well No. Davis "D" No. 1-34

Elevation 2545 KB Formation Lansing (140'-160') Effective Pay -- Ft. Ticket No. 1829

Date 1-30-04 Sec. 34 Twp. 15S Range 28W County Gove State Kansas

Test Approved By Mike Kidwell Diamond Representative Roger D. Friedly

Formation Test No. 2 Interval Tested from 3,886 ft. to 3,950 ft. Total Depth 3,950 ft.

Packer Depth 3,881 ft. Size 6 3/4 in. Packer Depth -- ft. Size -- in.

Packer Depth 3,886 ft. Size 6 3/4 in. Packer Depth -- ft. Size -- in.

Depth of Selective Zone Set          ft.

Top Recorder Depth (Inside) 3,872 ft. Recorder Number Elec. Cap. 5,000 psi

Bottom Recorder Depth (Outside) 3,947 ft. Recorder Number 13386 Cap. 4,000 psi

Below Straddle Recorder Depth          ft. Recorder Number          Cap.          psi

Drilling Contractor Pickrell Drilling Co., Inc. - Rig 10 Drill Collar Length 119 ft. I.D. 2 1/4 in.

Mud Type Chemical Viscosity 46 Weight Pipe Length -- ft. I.D. -- in.

Weight 9.35 Water Loss 11.2 cc. Drill Pipe Length 3,740 ft. I.D. 3 1/2 in.

Chlorides 5,000 P.P.M. Test Tool Length 27 ft. Tool Size 3 1/2 - IF in.

Jars: Make Bowen Serial Number Not Run Anchor Length 64 ft. Size 4 1/2 - FH in.

Did Well Flow? No Reversed Out No Surface Choke Size 1 in. Bottom Choke Size 5/8 in.

Main Hole Size 7 7/8 in. Tool Joint Size 4 1/2 - XH in.

Blow: 1st Open: Weak, 1/2 in., blow increasing to 4 1/2 ins. No blow back during shut-in.

2nd Open: Weak surface blow increasing to 3 1/2 ins. No blow back during shut-in.

Recovered 55 ft. of watery mud with a scum of oil = .688200 bbls. (Grind out: 32%-water; 68%-mud)

Recovered 109 ft. of muddy water with a few oil specks = .536280 bbls. (Grind out: 46%-mud; 54%-water)

Recovered 164 ft. of TOTAL FLUID = 1.224480 bbls.

Recovered          ft. of         

Recovered          ft. of         

Remarks Tool Sample Grind Out: 1%-oil; 36%-mud; 63%-water

KCC

MAR 08 2004

CONFIDENTIAL

Time Set Packer(s) 11:09 ~~P.M.~~ <sup>A.M.</sup> Time Started Off Bottom 3:24 ~~P.M.~~ <sup>A.M.</sup> Maximum Temperature 112°

Initial Hydrostatic Pressure ..... (A) 1857 P.S.I. SOME PLUGGING

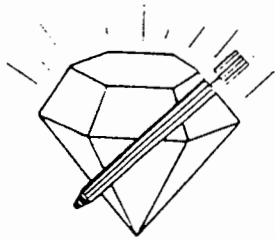
Initial Flow Period ..... Minutes 30 (B) 19 P.S.I. to (C) 66 P.S.I.

Initial Closed In Period ..... Minutes 75 (D) 938 P.S.I.

Final Flow Period ..... Minutes 60 (E) 71 P.S.I. to (F) 98 P.S.I.

Final Closed In Period ..... Minutes 90 (G) 818 P.S.I.

Final Hydrostatic Pressure ..... (H) 1855 P.S.I.



DIAMOND TESTING  
P. O. Box 157  
HOISINGTON, KANSAS 67544  
(800) 542-7313

FLUID SAMPLE DATA

Company Trans Pacific Oil Corporation  
Lease & Well No. Davis "D" No. 1-34  
Date 1-30-04 Sec. 34 Twp. 15 S Range 28 W  
Formation Test No. 2 Interval Tested From 3,886 ft. to 3,950 ft. Total Depth 3,950 ft.  
Formation Lansing (140'-160')

|            | MUD PIT        | RECOVERY       |                            |
|------------|----------------|----------------|----------------------------|
| Viscosity  | <u>46</u> CP   | <u>55</u> CP   |                            |
| Weight     | <u>9.35</u>    | <u>8.6</u>     |                            |
| Water Loss | <u>11.2</u> CC | <u>29.2</u> CC |                            |
| PH Factor  | <u>9.0</u>     | <u>8.0</u>     | <u>Water</u><br><u>7.0</u> |

|                         | RESISTIVITY                | CHLORIDE CONTENT  |
|-------------------------|----------------------------|-------------------|
| Recovery Water          | <u>.26</u> @ <u>81</u> °F. | <u>25,000</u> ppm |
| Recovery Mud            | <u>.43</u> @ <u>83</u> °F. | <u>13,500</u> ppm |
| Recovery Mud Filtrate   | <u>.35</u> @ <u>79</u> °F. | <u>16,500</u> ppm |
| Mud Pit Sample          | <u>.58</u> @ <u>90</u> °F. | <u>8,500</u> ppm  |
| Mud Pit Sample Filtrate | <u>.64</u> @ <u>86</u> °F. | <u>8,200</u> ppm  |

Sample Taken By ROGER D. FRIEDLY

Witness By Mike Kidwell

Remarks Pit filtrate triton dish chlorides were 5,000 Ppm.  
Recovery filtrate triton dish chlorides were 13,500 Ppm.  
Recovery water dish chlorides were 19,500 Ppm.

## GENERAL INFORMATION

### Client Information:

Company: TRANS PACIFIC OIL CORP  
Contact: ALAN BANTA & GARY SHARP  
Phone: Fax: e-mail:

### Site Information:

Contact: MIKE KIDWELL  
Phone: Fax: e-mail:

### Well Information:

Name: # 1-34 DAVIS 'D'  
Operator: TRANS PACIFIC OIL CORP  
Location-Downhole: DST #2 LANS '140-160'  
Location-Surface: NE SE SE SEC 34-15S-28W

### Test Information:

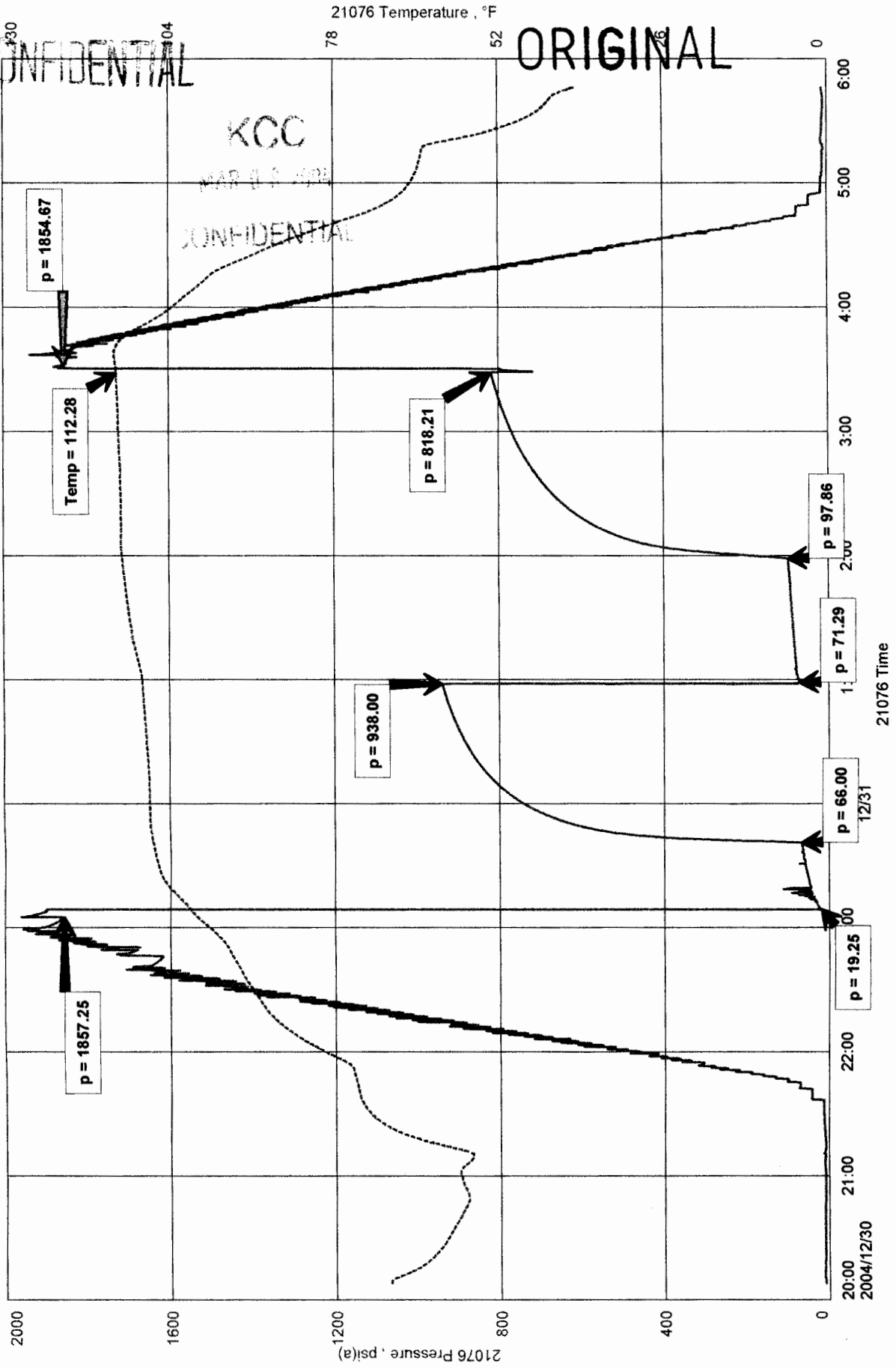
|                 |                  |               |          |
|-----------------|------------------|---------------|----------|
| Company:        | DIAMOND TESTING  |               |          |
| Representative: | ROGER D. FRIEDLY |               |          |
| Supervisor:     | MIKE KIDWELL     |               |          |
| Test Type:      | CONVENTIONAL     | Job Number:   |          |
| Test Unit:      | NO 1             |               |          |
| Start Date:     | 2004/01/30       | Start Time:   | 20:08:00 |
| End Date:       | 2004/01/31       | End Time:     | 05:46:00 |
| Report Date:    |                  | Prepared By:  |          |
| <u>Remarks:</u> |                  | Qualified By: |          |

RECOVERED 55' WM (32% WTR 68% MUD) SCUM OF OIL, 109' MW ( 46% MUD 54% WTR) FEW OIL SPECKS.

TRANS PACIFIC OIL CORP  
 DST #2 LANS '140-160'  
 Start Test Date: 2004/01/30  
 Final Test Date: 2004/01/31

# 1-34 DAVIS 'D'  
 Formation: LANS '140-160' 3,886'-3,950'  
 Pool: WILDCAT

# # 1-34 DAVIS 'D'



*DST # 2 outside  
 lens 140-160 3886-3950  
 LOC 3947*



DIAMOND TESTING

P.O. Box 157

HOISINGTON, KANSAS 67544

(620) 653-7550 • (800) 542-7313  
STC 21076.D03

ORIGINAL

Page 1 of 3 Pages

CONFIDENTIAL

Company Trans Pacific Oil Corporation Lease & Well No. Davis "D" No. 1-34

Elevation 2545 KB Formation Lansing (180'-220') Effective Pay -- Ft. Ticket No. 1830

Date 2-1-04 Sec. 34 Twp. 15S Range 28W County Gove State Kansas

Test Approved By Mike Kidwell Diamond Representative Roger D. Friedly

Formation Test No. 3 Interval Tested from 3,951 ft. to 4,046 ft. Total Depth 4,046 ft.

Packer Depth 3,946 ft. Size 6 3/4 in. Packer Depth -- ft. Size -- in.

Packer Depth 3,951 ft. Size 6 3/4 in. Packer Depth -- ft. Size -- in.

Depth of Selective Zone Set ft.

Top Recorder Depth (Inside) 3,937 ft. Recorder Number Elec. Cap. 5,000 psi

Bottom Recorder Depth (Outside) 4,043 ft. Recorder Number 13386 Cap. 4,000 psi

Below Straddle Recorder Depth ft. Recorder Number Cap. psi

Drilling Contractor Pickrell Drilling Co., Inc. - Rig 10 Drill Collar Length 109 ft. I.D. 2 1/4 in.

Mud Type Chemical Viscosity 46 Weight Pipe Length -- ft. I.D. -- in.

Weight 9.35 Water Loss 12.0 cc. Drill Pipe Length 3,815 ft. I.D. 3 1/2 in.

Chlorides 9,000 P.P.M. Test Tool Length 27 ft. Tool Size 3 1/2 - IF in.

Jars: Make Bowen Serial Number Not Run Anchor Length 95 ft. Size 4 1/2 - FH in.

Did Well Flow? No Reversed Out No Surface Choke Size 1 in. Bottom Choke Size 5/8 in.

Main Hole Size 7 7/8 in. Tool Joint Size 4 1/2 - XH in.

Blow: 1st Open: Weak, 1/2 in., blow increasing to 2 ins. No blow back during shut-in.

2nd Open: No blow. No blow back during shut-in.

Recovered 55 ft. of drilling mud with a few oil specks = .270600 bbls.

Recovered ft. of

Recovered ft. of

Recovered ft. of

Recovered ft. of

Remarks Tool Sample Grind Out: Drilling mud with a few oil specks.

KCC

MAR 0 3 2004

CONFIDENTIAL

Time Set Packer(s) 3:42 A.M. Time Started Off Bottom 7:12 A.M. Maximum Temperature 108°

Initial Hydrostatic Pressure ..... (A) 1881 P.S.I.

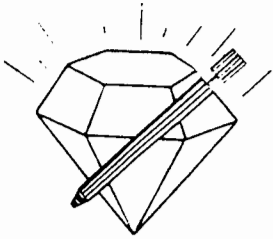
Initial Flow Period ..... Minutes 30 (B) 2 P.S.I. to (C) 22 P.S.I.

Initial Closed In Period ..... Minutes 60 (D) 475 P.S.I.

Final Flow Period ..... Minutes 45 (E) 23 P.S.I. to (F) 35 P.S.I.

Final Closed In Period ..... Minutes 75 (G) 385 P.S.I.

Final Hydrostatic Pressure ..... (H) 1884 P.S.I.



**DIAMOND TESTING**  
P. O. Box 157  
HOISINGTON, KANSAS 67544  
(800) 542-7313

**FLUID SAMPLE DATA**

Company Trans Pacific Oil Corporation

Lease & Well No. Davis "D" No. 1-34

Date 2-1-04 Sec. 34 Twp. 15 S Range 28 W

Formation Test No. 3 Interval Tested From 3,951 ft. to 4,046 ft. Total Depth 4,046 ft.

Formation Lansing (180'-220')

|            | MUD PIT        | RECOVERY       |
|------------|----------------|----------------|
| Viscosity  | <u>46</u> CP   | <u>50</u> CP   |
| Weight     | <u>9.35</u>    | <u>9.2</u>     |
| Water Loss | <u>12.0</u> CC | <u>11.2</u> CC |
| PH Factor  | <u>9.0</u>     | <u>9.0</u>     |

|                         | RESISTIVITY                | CHLORIDE CONTENT  |
|-------------------------|----------------------------|-------------------|
| Recovery Water          | <u>--</u> @ <u>--</u> °F.  | <u>--</u> ppm     |
| Recovery Mud            | <u>.45</u> @ <u>86</u> °F. | <u>11,500</u> ppm |
| Recovery Mud Filtrate   | <u>.52</u> @ <u>84</u> °F. | <u>10,000</u> ppm |
| Mud Pit Sample          | <u>.38</u> @ <u>92</u> °F. | <u>12,500</u> ppm |
| Mud Pit Sample Filtrate | <u>.48</u> @ <u>88</u> °F. | <u>11,000</u> ppm |

Sample Taken By ROGER D. FRIEDLY

Witness By Mike Kidwell

Remarks Pit filtrate triton dish chlorides were 9,000 Ppm.  
Recovery filtrate triton dish chlorides were 8,500 Ppm.

## GENERAL INFORMATION

### Client Information:

Company: TRANS PACIFIC OIL CORP  
Contact: ALAN BANTA & GARY SHARP  
Phone: Fax: e-mail:

### Site Information:

Contact: MIKE KIDWELL  
Phone: Fax: e-mail:

### Well Information:

Name: #1-34 DAVIS 'D'  
Operator: TRANS PACIFIC OIL CORP  
Location-Downhole: DST #3 LANS '180-220' 3951'-4046'  
Location-Surface: NE SE SE SEC 34-15S-28W GOVE COUNTY

### Test Information:

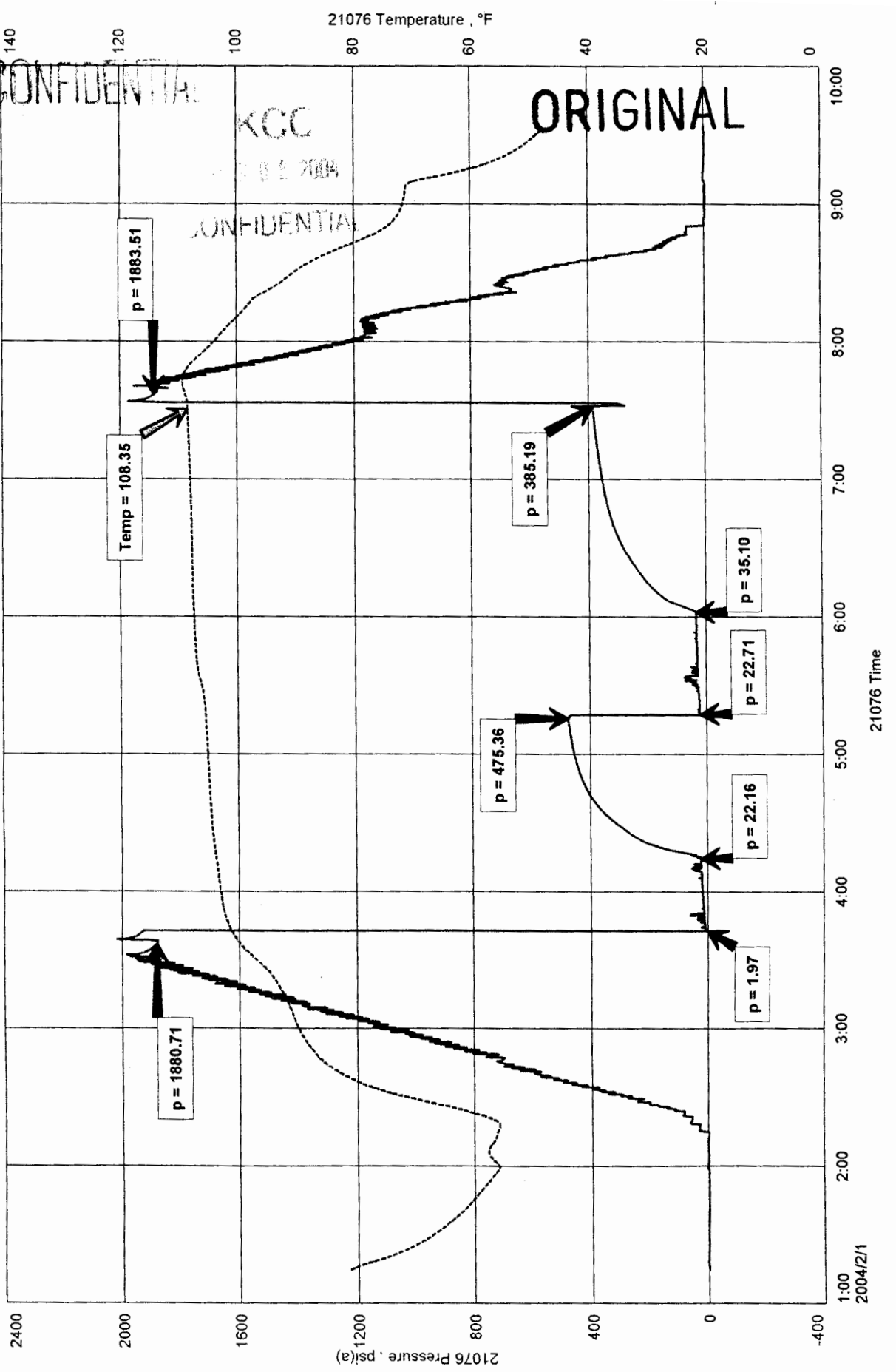
Company: DIAMOND TESTING  
Representative: ROGER D. FRIEDLY  
Supervisor: MIKE KIDWELL  
Test Type: CONVENTIONAL Job Number:  
Test Unit: NO 1  
Start Date: 2004/02/01 Start Time: 01:13:30  
End Date: 2004/02/01 End Time: 09:33:40  
Report Date: Prepared By:  
Remarks: Qualified By:

RECOVERED 55' DM WITH A FEW OIL SPECKS.

TRANS PACIFIC OIL CORP  
 DST #3 LANS '180-220' 3951'-4046'  
 Start Test Date: 2004/02/01  
 Final Test Date: 2004/02/01

#1-34 DAVIS 'D'  
 Formation: DST #3 LANS '180-220' 3951'-4046'  
 Pool: WILDCAT

# #1-34 DAVIS 'D'



DST # 3 outside  
 LANS 180-220  
 3951-4046  
 4043



DIAMOND TESTING

P.O. Box 157  
HOISINGTON, KANSAS 67544

(620) 653-7550 • (800) 542-7313  
STC 21076.D04

ORIGINAL

Page 1 of 3 Pages

CONFIDENTIAL

Company Trans Pacific Oil Corporation Lease & Well No. Davis "D" No. 1-34

Elevation 2545 KB Formation Altamont "B" Effective Pay -- Ft. Ticket No. 1831

Date 2-2-04 Sec. 34 Twp. 15S Range 28W County Gove State Kansas

Test Approved By Mike Kidwell Diamond Representative Roger D. Friedly

Formation Test No. 4 Interval Tested from 4,108 ft. to 4,122 ft. Total Depth 4,122 ft.

Packer Depth 4,103 ft. Size 6 3/4 in. Packer Depth -- ft. Size -- in.

Packer Depth 4,108 ft. Size 6 3/4 in. Packer Depth -- ft. Size -- in.

Depth of Selective Zone Set          ft.

Top Recorder Depth (Inside) 4,094 ft. Recorder Number Elec. Cap. 5,000 psi

Bottom Recorder Depth (Outside) 4,119 ft. Recorder Number 13386 Cap. 4,000 psi

Below Straddle Recorder Depth          ft. Recorder Number          Cap.          psi

Drilling Contractor Pickrell Drilling Co., Inc. - Rig 10 Drill Collar Length 109 ft. I.D. 2 1/4 in.

Mud Type Chemical Viscosity 48 Weight Pipe Length -- ft. I.D. -- in.

Weight 9.3 Water Loss 11.2 cc. Drill Pipe Length 3,972 ft. I.D. 3 1/2 in.

Chlorides 8,500 P.P.M. Test Tool Length 27 ft. Tool Size 3 1/2 - IF in.

Jars: Make Bowen Serial Number Not Run Anchor Length 14 ft. Size 4 1/2 - FH in.

Did Well Flow? No Reversed Out No Surface Choke Size 1 in. Bottom Choke Size 5/8 in.

Main Hole Size 7 7/8 in. Tool Joint Size 4 1/2 - XH in.

Blow: 1st Open: Weak, 1/8 in., blow increasing to 1 in. in 17 mins. then decreasing to 3/4 in. No blow back during shut-in.  
2nd Open: No blow. No blow back during shut-in.

Recovered 10 ft. of drilling mud = .049200 bbls.

KCC  
3 2004

Recovered          ft. of         

Recovered          ft. of         

Recovered          ft. of         

Recovered          ft. of         

Remarks Tool Sample Grind Out: Drilling mud with some oil specks & a good, gassy odor.

Time Set Packer(s) 2:35 ~~PM~~ <sup>AM</sup> Time Started Off Bottom 6:05 ~~PM~~ <sup>AM</sup> Maximum Temperature 112°

Initial Hydrostatic Pressure ..... (A) 1952 P.S.I.

Initial Flow Period ..... Minutes 30 (B) 6 P.S.I. to (C) 17 P.S.I.

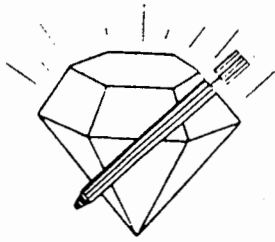
Initial Closed In Period ..... Minutes 60 (D) 896 P.S.I.

Final Flow Period ..... Minutes 45 (E) 17 P.S.I. to (F) 26 P.S.I.

Final Closed In Period ..... Minutes 75 (G) 887 P.S.I.

Final Hydrostatic Pressure ..... (H) 1956 P.S.I.

CONFIDENTIAL



**DIAMOND TESTING**  
P. O. Box 157  
HOISINGTON, KANSAS 67544  
(800) 542-7313

**FLUID SAMPLE DATA**

Company Trans Pacific Oil Corporation

Lease & Well No. Davis "D" No. 1-34

Date 2-2-04 Sec. 34 Twp. 15 S Range 28 W

Formation Test No. 4 Interval Tested From 4,108 ft. to 4,122 ft. Total Depth 4,122 ft.

Formation Altamont "B"

|            | MUD PIT        | RECOVERY       |
|------------|----------------|----------------|
| Viscosity  | <u>48</u> CP   | <u>60</u> CP   |
| Weight     | <u>9.3</u>     | <u>9.4</u>     |
| Water Loss | <u>11.2</u> CC | <u>10.0</u> CC |
| PH Factor  | <u>9.5</u>     | <u>9.0</u>     |

|                         | RESISTIVITY                | CHLORIDE<br>CONTENT |
|-------------------------|----------------------------|---------------------|
| Recovery Water          | <u>--</u> @ <u>--</u> °F.  | <u>--</u> ppm       |
| Recovery Mud            | <u>.60</u> @ <u>78</u> °F. | <u>9,500</u> ppm    |
| Recovery Mud Filtrate   | <u>.70</u> @ <u>80</u> °F. | <u>8,000</u> ppm    |
| Mud Pit Sample          | <u>.52</u> @ <u>88</u> °F. | <u>11,000</u> ppm   |
| Mud Pit Sample Filtrate | <u>.50</u> @ <u>84</u> °F. | <u>10,500</u> ppm   |

Sample Taken By ROGER D. FRIEDLY

Witness By Mike Kidwell

Remarks Pit filtrate triton dish chlorides were 8,500 Ppm.  
Recovery filtrate triton dish chlorides were 6,000 Ppm.

## GENERAL INFORMATION

### Client Information:

Company: TRANS PACIFIC OIL CORP  
Contact: ALAN BANTA & GARY SHARP  
Phone: Fax: e-mail:

### Site Information:

Contact: MIKE KIDWELL  
Phone: Fax: e-mail:

### Well Information:

Name: #1-34 DAVIS 'D'  
Operator: TRANS PACIFIC OIL CORP  
Location-Downhole: DST #4 ALTAMONT 'B' 4108'-4122'  
Location-Surface: NE SE SE SEC34-15S-28W

### Test Information:

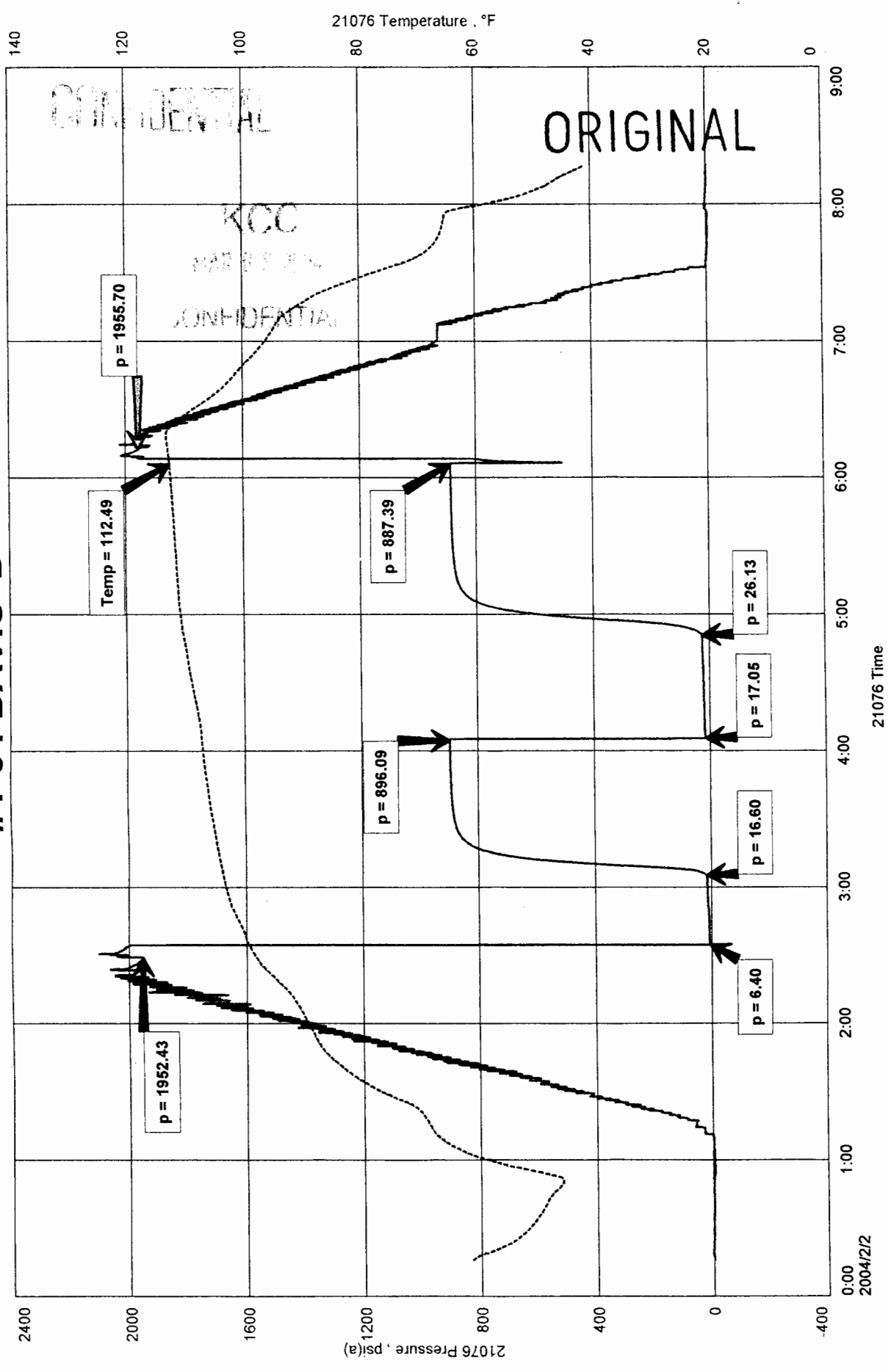
|                 |                  |               |          |
|-----------------|------------------|---------------|----------|
| Company:        | DIAMOND TESTING  |               |          |
| Representative: | ROGER D. FRIEDLY |               |          |
| Supervisor:     | MIKE KIDWELL     |               |          |
| Test Type:      | CONVENTIONAL     | Job Number:   |          |
| Test Unit:      | NO 1             |               |          |
| Start Date:     | 2004/02/02       | Start Time:   | 00:16:00 |
| End Date:       | 2004/02/02       | End Time:     | 08:17:00 |
| Report Date:    |                  | Prepared By:  |          |
| <u>Remarks:</u> |                  | Qualified By: |          |

RECOVERED 10' DRILLING MUD

TRANS PACIFIC OIL CORP  
 DST #4 ALTAMONT 'B' 4108'-4122'  
 Start Test Date: 2004/02/02  
 Final Test Date: 2004/02/02

#1-34 DAVIS 'D'  
 Formation: DST #4 ALTAMONT 'B' 4108'-4122'  
 Pool: WILDCAT

# #1-34 DAVIS 'D'



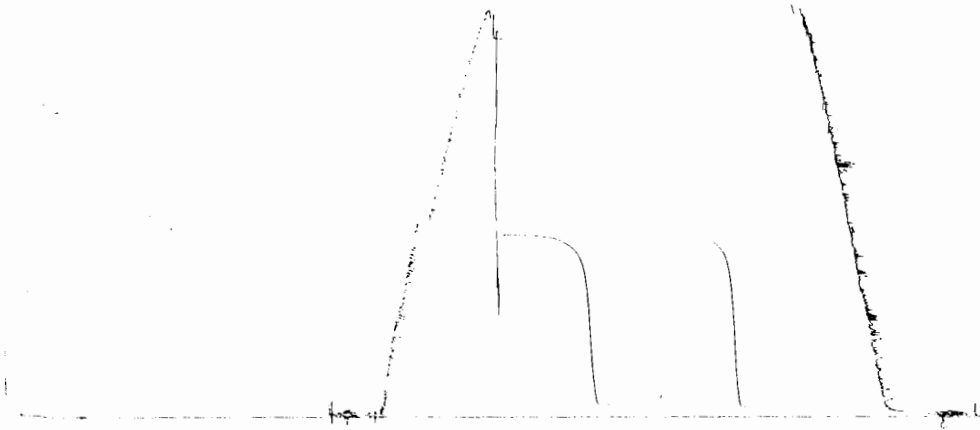
CONFIDENTIAL

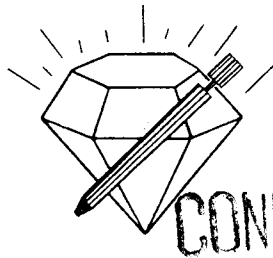
KCC  
 MAR 3 2004  
 CONFIDENTIAL

ORIGINAL

DST #4 Outside 13382  
Amount 13

4108-4122  
LOC 4119





DIAMOND TESTING

P.O. Box 157

HOISINGTON, KANSAS 67544

(820) 653-7550 • (800) 542-7313  
STC 21076.D05

ORIGINAL

Page 1 of 3 Pages

CONFIDENTIAL

Company Trans Pacific Oil Corporation Lease & Well No. Davis "D" No. 1-34

Elevation 2545 KB Formation Pawnee Effective Pay -- Ft. Ticket No. 1832

Date 2-2-04 Sec. 34 Twp. 15S Range 28W County Gove State Kansas

Test Approved By Mike Kidwell Diamond Representative Roger D. Friedly

Formation Test No. 5 Interval Tested from 4,142 ft. to 4,170 ft. Total Depth 4,170 ft.

Packer Depth 4,137 ft. Size 6 3/4 in. Packer Depth -- ft. Size -- in.

Packer Depth 4,142 ft. Size 6 3/4 in. Packer Depth -- ft. Size -- in.

Depth of Selective Zone Set ft.

Top Recorder Depth (Inside) 4,128 ft. Recorder Number Elec. Cap. 5,000 psi

Bottom Recorder Depth (Outside) 4,167 ft. Recorder Number 13386 Cap. 4,000 psi

Below Straddle Recorder Depth ft. Recorder Number Cap. psi

Drilling Contractor Pickrell Drilling Co., Inc. - Rig 10 Drill Collar Length 109 ft. I.D. 2 1/4 in.

Mud Type Chemical Viscosity 49 Weight Pipe Length -- ft. I.D. -- in.

Weight 9.35 Water Loss 10.4 cc. Drill Pipe Length 4,006 ft. I.D. 3 1/2 in.

Chlorides 5,500 P.P.M. Test Tool Length 27 ft. Tool Size 3 1/2 - IF in.

Jars: Make Bowen Serial Number Not Run Anchor Length 28 ft. Size 4 1/2 - FH in.

Did Well Flow? No Reversed Out No Surface Choke Size 1 in. Bottom Choke Size 5/8 in.

Main Hole Size 7 7/8 in. Tool Joint Size 4 1/2 - XH in.

Blow: 1st Open: Weak, 1/8 in., blow increasing to 1 in. Decreasing in 15 mins. to 1/2 in. at end.

2nd Open: No blow.

Recovered 3 ft. of drilling mud = .014760 bbls.

Recovered ft. of

Recovered ft. of

Recovered ft. of

Recovered ft. of

Remarks Tool Sample Grind Out: 100%-drilling mud with a "few" oil specks

KCC

2004 FEB 2

CONFIDENTIAL

Time Set Packer(s) 8:27 ~~XXM.~~ P.M. Time Started Off Bottom 10:27 ~~XXM.~~ P.M. Maximum Temperature 107°

Initial Hydrostatic Pressure ..... (A) 1977 P.S.I.

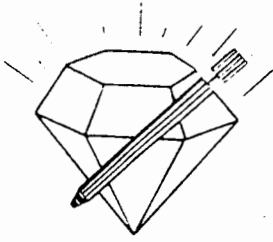
Initial Flow Period ..... Minutes 30 (B) 6 P.S.I. to (C) 8 P.S.I.

Initial Closed In Period ..... Minutes 30 (D) 21 P.S.I.

Final Flow Period ..... Minutes 30 (E) 8 P.S.I. to (F) 9 P.S.I.

Final Closed In Period ..... Minutes 30 (G) 17 P.S.I.

Final Hydrostatic Pressure ..... (H) 1970 P.S.I.



**DIAMOND TESTING**  
P. O. Box 157  
HOISINGTON, KANSAS 67544  
(800) 542-7313

**FLUID SAMPLE DATA**

Company Trans Pacific Oil Corporation  
Lease & Well No. Davis "D" No. 1-34  
Date 2-2-04 Sec. 34 Twp. 15 S Range 28 W  
Formation Test No. 5 Interval Tested From 4,142 ft. to 4,170 ft. Total Depth 4,170 ft.  
Formation Pawnee

|            | <u>MUD PIT</u> | <u>RECOVERY</u> |
|------------|----------------|-----------------|
| Viscosity  | <u>49</u> CP   | <u>47</u> CP    |
| Weight     | <u>9.35</u>    | <u>9.4</u>      |
| Water Loss | <u>10.4</u> CC | <u>10.4</u> CC  |
| PH Factor  | <u>10.0</u>    | <u>10.0</u>     |

|                         | <u>RESISTIVITY</u>         | <u>CHLORIDE CONTENT</u> |
|-------------------------|----------------------------|-------------------------|
| Recovery Water          | <u>--</u> @ <u>--</u> °F.  | <u>--</u> ppm           |
| Recovery Mud            | <u>.50</u> @ <u>84</u> °F. | <u>10,500</u> ppm       |
| Recovery Mud Filtrate   | <u>.53</u> @ <u>86</u> °F. | <u>9,700</u> ppm        |
| Mud Pit Sample          | <u>.51</u> @ <u>88</u> °F. | <u>10,000</u> ppm       |
| Mud Pit Sample Filtrate | <u>.57</u> @ <u>84</u> °F. | <u>9,400</u> ppm        |

Sample Taken By ROGER D. FRIEDLY

Witness By Mike Kidwell

Remarks Pit filtrate triton dish chlorides were 5,500 Ppm.  
Recovery filtrate triton dish chlorides were 6,000 Ppm.

## GENERAL INFORMATION

### Client Information:

Company: TRANS PACIFIC OIL CORP  
Contact: ALAN BANTA & GARY SHARP  
Phone: Fax: e-mail:

### Site Information:

Contact: MIKE KIDWELL  
Phone: Fax: e-mail:

### Well Information:

Name: #1-34 DAVIS 'D'  
Operator: TRANS PACIFIC OIL CORP  
Location-Downhole: DST #5 PAWNEE 4142'-4170'  
Location-Surface: NE SE SE SEC 34-15S-28W GOVE COUNTY

### Test Information:

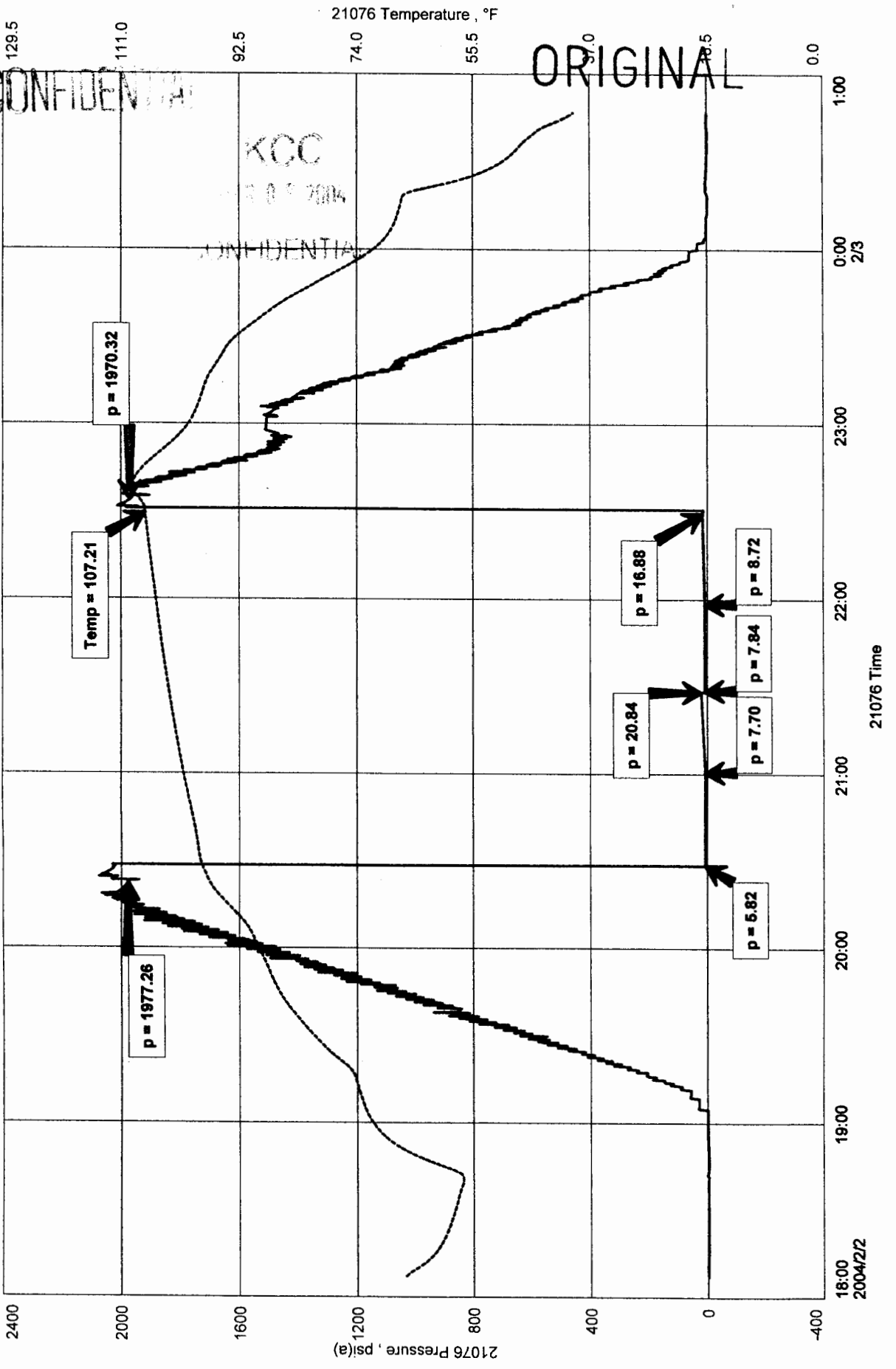
|                 |                  |               |          |
|-----------------|------------------|---------------|----------|
| Company:        | DIAMOND TESTING  |               |          |
| Representative: | ROGER D. FRIEDLY |               |          |
| Supervisor:     | MIKE KIDWELL     |               |          |
| Test Type:      | CONVENTIONAL     | Job Number:   |          |
| Test Unit:      | NO 1             |               |          |
| Start Date:     | 2004/02/02       | Start Time:   | 18:06:00 |
| End Date:       | 2004/02/03       | End Time:     | 00:46:40 |
| Report Date:    |                  | Prepared By:  |          |
| <u>Remarks:</u> |                  | Qualified By: |          |

3' DRILLING MUD WITH A "FEW" OIL SPECKS IN TOOL.

TRANS PACIFIC OIL CORP  
 DST #5 PAWNEE 4142'-4170'  
 Start Test Date: 2004/02/02  
 Final Test Date: 2004/02/03

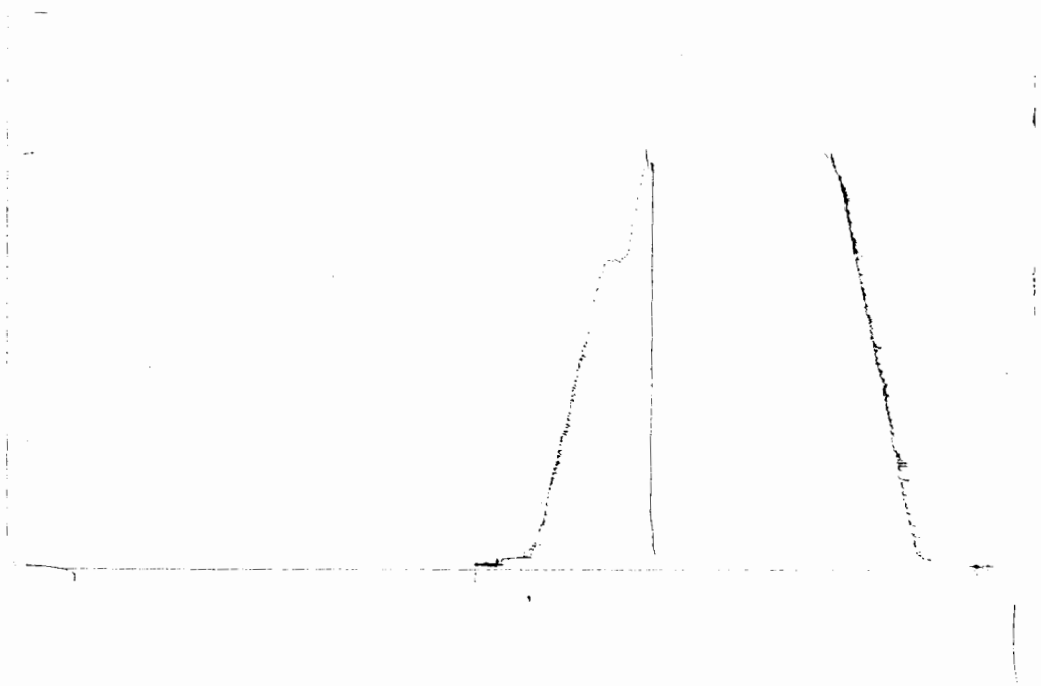
#1-34 DAVIS 'D'  
 Formation: DST #5 PAWNEE 4142'-4170'  
 Pool: WILDCAT

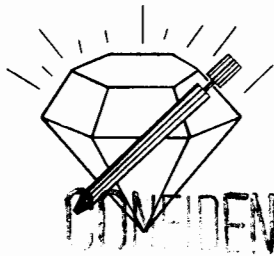
# #1-34 DAVIS 'D'



DST #5 Outside 13386  
Pawnee

4142-4170  
loc 4167





**DIAMOND TESTING**  
 P.O. Box 157  
 HOISINGTON, KANSAS 67544  
 (620) 653-7550 • (800) 542-7313  
 STC 21076.D06

**ORIGINAL**  
 Page 1 of 3 Pages

Company Trans Pacific Oil Corporation Lease & Well No. Davis "D" No. 1-34  
 Elevation 2545 KB Formation Fort Scott Effective Pay -- Ft. Ticket No. 1833  
 Date 2-3-04 Sec. 34 Twp. 15S Range 28W County Gove State Kansas  
 Test Approved By Mike Kidwell Diamond Representative Roger D. Friedly

Formation Test No. 6 Interval Tested from 4,217 ft. to 4,275 ft. Total Depth 4,275 ft.  
 Packer Depth 4,212 ft. Size 6 3/4 in. Packer Depth -- ft. Size -- in.  
 Packer Depth 4,217 ft. Size 6 3/4 in. Packer Depth -- ft. Size -- in.  
 Depth of Selective Zone Set          ft.

Top Recorder Depth (Inside) 4,203 ft. Recorder Number Elec. Cap. 5,000 psi  
 Bottom Recorder Depth (Outside) 4,272 ft. Recorder Number 13386 Cap. 4,000 psi  
 Below Straddle Recorder Depth          ft. Recorder Number          Cap.          psi

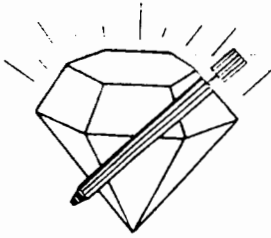
Drilling Contractor Pickrell Drilling Co., Inc. - Rig 10 Drill Collar Length 109 ft. I.D. 2 1/4 in.  
 Mud Type Chemical Viscosity 49 Weight Pipe Length -- ft. I.D. -- in.  
 Weight 9.4 Water Loss 11.2 cc. Drill Pipe Length 4,081 ft. I.D. 3 1/2 in.  
 Chlorides 6,000 P.P.M. Test Tool Length 27 ft. Tool Size 3 1/2 - IF in.  
 Jars: Make Bowen Serial Number Not Run Anchor Length 27' perf. w/38' drill pipe Size 4 1/2 - FH in.  
 Did Well Flow? No Reversed Out No Surface Choke Size 1 in. Bottom Choke Size 5/8 in.  
 Main Hole Size 7 7/8 in. Tool Joint Size 4 1/2 - XH in.

Blow: 1st Open: Weak, 1/2 in., blow increasing to 1 in. Decreasing in 20 mins. to 3/4 in. at end.  
2nd Open: No blow.

Recovered 2 ft. of drilling mud = .009840 bbls.  
 Recovered          ft. of           
 Recovered          ft. of           
 Recovered          ft. of           
 Recovered          ft. of         

Remarks Tool Sample Grind Out: 100%-drilling mud with very few oil specks

Time Set Packer(s) 4:40 ~~XXM.~~ P.M. Time Started Off Bottom 6:40 ~~XXM.~~ P.M. Maximum Temperature 110°  
 Initial Hydrostatic Pressure 2026 P.S.I. (A)  
 Initial Flow Period 30 Minutes (B) 4 P.S.I. to (C) 12 P.S.I.  
 Initial Closed In Period 30 Minutes (D) 46 P.S.I.  
 Final Flow Period 30 Minutes (E) 9 P.S.I. to (F) 13 P.S.I.  
 Final Closed In Period 30 Minutes (G) 29 P.S.I.  
 Final Hydrostatic Pressure 2021 P.S.I. (H)



**DIAMOND TESTING**  
P. O. Box 157  
HOISINGTON, KANSAS 67544  
(800) 542-7313

**FLUID SAMPLE DATA**

Company Trans Pacific Oil Corporation

Lease & Well No. Davis "D" No. 1-34

Date 2-3-04 Sec. 34 Twp. 15 S Range 28 W

Formation Test No. 6 Interval Tested From 4,217 ft. to 4,275 ft. Total Depth 4,275 ft.

Formation Fort Scott

|            | <u>MUD PIT</u> | <u>RECOVERY</u> |
|------------|----------------|-----------------|
| Viscosity  | <u>49</u> CP   | <u>48</u> CP    |
| Weight     | <u>9.4</u>     | <u>9.4</u>      |
| Water Loss | <u>11.2</u> CC | <u>10.8</u> CC  |
| PH Factor  | <u>9.5</u>     | <u>9.5</u>      |

|                         | <u>RESISTIVITY</u>         | <u>CHLORIDE<br/>CONTENT</u> |
|-------------------------|----------------------------|-----------------------------|
| Recovery Water          | <u>--</u> @ <u>--</u> °F.  | <u>--</u> ppm               |
| Recovery Mud            | <u>.50</u> @ <u>84</u> °F. | <u>11,000</u> ppm           |
| Recovery Mud Filtrate   | <u>.52</u> @ <u>82</u> °F. | <u>10,500</u> ppm           |
| Mud Pit Sample          | <u>.54</u> @ <u>88</u> °F. | <u>10,000</u> ppm           |
| Mud Pit Sample Filtrate | <u>.60</u> @ <u>84</u> °F. | <u>9,500</u> ppm            |

Sample Taken By ROGER D. FRIEDLY

Witness By Mike Kidwell

Remarks Pit filtrate triton dish chlorides were 6,000 Ppm.  
Recovery filtrate triton dish chlorides were 5,500 Ppm.

## GENERAL INFORMATION

**Client Information:**

Company: TRANS PACIFIC OIL CORP  
Contact: ALAN BANTA & GARY SHARP  
Phone: Fax: e-mail:

**Site Information:**

Contact: MIKE KIDWELL  
Phone: Fax: e-mail:

**Well Information:**

Name: #1-34 DAVIS 'D'  
Operator: TRANS PACIFIC OIL CORP  
Location-Downhole: DST #6 FT SCOTT 4217'-4275'  
Location-Surface: NE SE SE SEC 34-15S-28W GOVE COUNTY

**Test Information:**

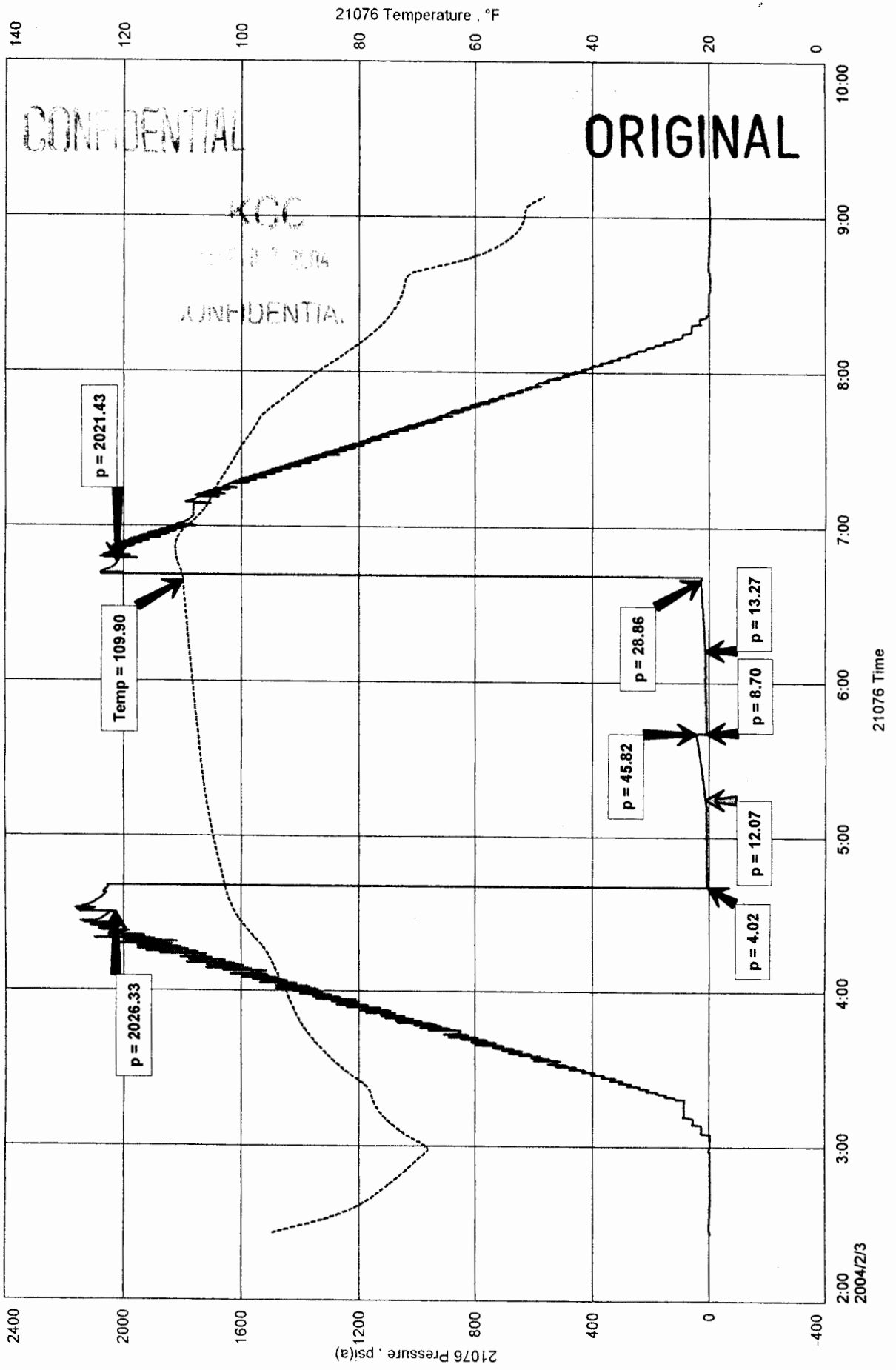
|                        |                  |               |          |
|------------------------|------------------|---------------|----------|
| Company:               | DIAMOND TESTING  |               |          |
| Representative:        | ROGER D. FRIEDLY |               |          |
| Supervisor:            | MIKE KIDWELL     |               |          |
| Test Type:             | CONVENTIONAL     | Job Number:   |          |
| Test Unit:             | NO 1             |               |          |
| Start Date:            | 2004/02/03       | Start Time:   | 14:25:00 |
| End Date:              | 2004/02/03       | End Time:     | 21:06:50 |
| Report Date:           |                  | Prepared By:  |          |
| <b><u>Remarks:</u></b> |                  | Qualified By: |          |

RECOVERED 2' DM WITH VERY FEW OIL SPECKS IN TOOL.

TRANS PACIFIC OIL CORP  
 DST #6 FT SCOTT 4217-4275'  
 Start Test Date: 2004/02/03  
 Final Test Date: 2004/02/03

#1-34 DAVIS 'D'  
 Formation: DST #6 FT SCOTT 4217'-4275'  
 Pool: WILDCAT

# #1-34 DAVIS 'D'



DST #6 Outside 43384  
FT Scott

4217-4225  
602 4223

