

**BEREXCO, INC.  
CONSUELLA UNIT # 11  
SENESE SECTION 25 T15S-R30W  
GOVE COUNTY, KANSAS**

**KCC  
JUN 18 2007  
CONFIDENTIAL**

RECEIVED  
KANSAS CORPORATION COMMISSION

**JUN 19 2007**

CONSERVATION DIVISION  
WICHITA, KS

**GEOLOGIST  
WILLIAM B. BYNOG**

## RESUME

OPERATOR: BEREXCO INC.

WELL NAME & NUMBER: CONSUELLA UNIT #11

LOCATION: SENESE SECTION  
25 T15S-R25W

COUNTY: GOVE

STATE: KANSAS

SPUD DATE: 3-16-2007 COMPLETION DATE: 3-26-2007

ELEVATIONS: GL: 2618' KB: 2629'

CONTRACTOR: BEREDCO RIG 10

LOGS: LOG TECH TYPES: RAG, MICROLOG & SONIC  
ENGINEER: SCHMEIDLER

WELLSITE ENGINEER: NONE

MUD COMPANY: MUDCO

MUD TYPE & ENGINEER: FRESH CHEMICAL, JODY DIETZ

GEOLOGIST: WILLIAM B. BYNOG

HOLE SIZE: 7 7/8

MUD LOGGING BY: NONE

DRILL STEM TEST COMPANY: TRILOBITE TESTING

DRILL STEM TEST: DST#1 3704-70, DST#2 3870-3960, DST#3  
3964-90, DST#4 4185-4230

WELL STATUS: SET PRODUCTION CASING

RECEIVED  
KANSAS CORPORATION COMMISSION

JUN 19 2007

CONSERVATION DIVISION  
WICHITA, KS

## SUMMARY AND CONCLUSION

Consuella unit #11 was drilled to a total depth of 4476 feet testing the Lansing Kansas City, Marmaton, Pawnee, Fort Scott, Cherokee, Johnson and Mississippian Formations. Consuella unit #11 was a western offset to York Southwest Field in Gove County, Kansas. Our major objectives were the Lansing Kansas City and Pawnee Formations. Secondary objective was the Johnson Formation.

The Lansing Kansas City Formation came in two feet high to prognosis and six feet high to our closest producer Consuella # 6. The Lansing A and B zones both had good hydrocarbon shows in an oolitic Limestone with poor to fair porosity development. These zones were tested on drill stem test # 1 recovering 30 feet of gas in pipe, 28 feet of oil cut mud (5% gas, 65% oil and 30% mud).

The Lansing F and G zones both had fair to good porosity development with very rare spotty faint brown stain, not worthy of a test.

The Kansas City J zone at 3950-54 was associated with a very good drilling break, good porosity development, spotty brown stain and a good cut in an oolitic Limestone. Both the I and J were tested together on drill stem test # 2 recovering 15 feet of free oil and 591 feet of mud cut water.

The Kansas City K zone at 3976-89 feet had a poor drilling break in a chalky Limestone with fair porosity development. This zone was tested on drill stem test # 3 with poor results recovering only five feet of oil spotted mud and very low pressures, probably depleted.

The Pawnee at 4172 feet was associated with a reverse drilling break in a tight very chalky Limestone with trace rare spotty brown stain and a faint cut. This zone was tested on drill stem test # 4 recovering only five feet of drilling mud with no shows.

Logs agreed with sample evaluation recording fair to good porosity development and good micro log response in the Lansing Kansas City indicating permeable reservoirs. A decision was made to run 5 ½ production casing on the favorable Lansing Kansas City A, B, and J zone drill stem tests and electric log results.

RECEIVED  
KANSAS CORPORATION COMMISSION

JUN 19 2007

CONSERVATION DIVISION  
WICHITA, KS

## FORMATION TOPS

FORMATION	DEPTH (LOGS)
STONE CORRAL	2034(+595)
BASE	2064(+626)
TOPEAKA	
HEEBNER	3674(-1045)
LANSING A	3712(-1083)
BKC	4048(-1419)
PAWNEE	4172(-1543)
FORT SCOTT	4222(-1593)
CHEROKEE SHALE	4246(-1617)
JOHNSON	4280(-1651)
MISSISSIPPI LIME	4318(-1689)
TOTAL DEPTH	4376(-1747)

RECEIVED  
KANSAS CORPORATION COMMISSION

JUN 19 2007

CONSERVATION DIVISION  
WICHITA, KS

## BIT RECORD

Bit #	SIZE	MAKE	TYPE	DEPTH OUT	FOOTAGE	HOURS
1	12 ¼	VARREL	CH20	370	370	2
2	7 7/8	VARREL	CH29	3770	3400	79 ½
3	7 7/8	VARREL	CH29	4230	460	34.5
4	7 7/8	VARREL	CH20	4376	146	

## DEVIATION RECORD

DEPTH	ANGLE
3770	2
4230	1

## DAILY CHRONOLOGY

DATE	DEPTH AT 7:00	FOOTAGE	REMARKS
3-17-07	375	375	Set surface, WOC
3-18-07	933	558	Drilling
3-19-07	2570	1637	Drilling
3-20-07	3318	748	Drilling
3-21-07	3770	452	Drilling, circ. samples
3-22-07	3875	105	Circ. Samples, DST#1
3-23-07	3960	85	Circ. Samples, DST#2
3-24-07	4050	90	Circ. Samples, DST#3
3-25-07	4230	180	Drilling, DST#4
3-26-07	4376	146	Logging

RECEIVED  
CORPORATION COMMISSION

2007

OBSERVATION DIVISION  
WICHITA, KS



T155S-R30W

DOROTHY

24

GAIL

HEIS BROS

CONSUELLA

CONSUELLA

BISHOP

SHARP

SHARP

NEWTON

36

YORK 'MM'

YORK

19

YORK

GLADYS

30

JASPER

JASPER

FRISTLEY

31

ROSS

YORK 'AW'

20

THIES

YORK C. THIES

L. VERNON

MARION JAMES

JASPER 'A'

JASPER 'B'

VIRGINIA

32

T155S-R29W

21

YORK 'BU'

MARY EDITH

BROWN BEULA

28

HERNDON 'II'

HERNDON 'II'

DOWELL 'J'

DOWELL 'A'

33

DOWELL 'H'

FEET 2,196

KANSAS CORPORATION COMMISSION

2007

WICHITA, KS

BEREXCO, INC.  
CONSUELLA LEASE  
SE. 1/4, SECTION 25, T15S, R30W  
GOVE COUNTY, KANSAS

Notes:

1. Set iron rod at location site.
2. All flagging Red & Yellow.
3. Overhead power available at N., S. & W. lines, Sec. 25 and in SE. 1/4, Sec. 25.
4. Kansas One Call System Inc. should be notified before excavation (1-800-344-7233).
5. CAUTION: Various pipelines in Sec. 25.
6. Contact landowner for best access.

Drillsite Location  
Consuella #11  
1775' FSL 550' FEL  
Ground Elevation = 2618

PRODUCER  
2623

LARGE  
DRAW

N. CREST OF DRAW  
50' E. OF LOCATION

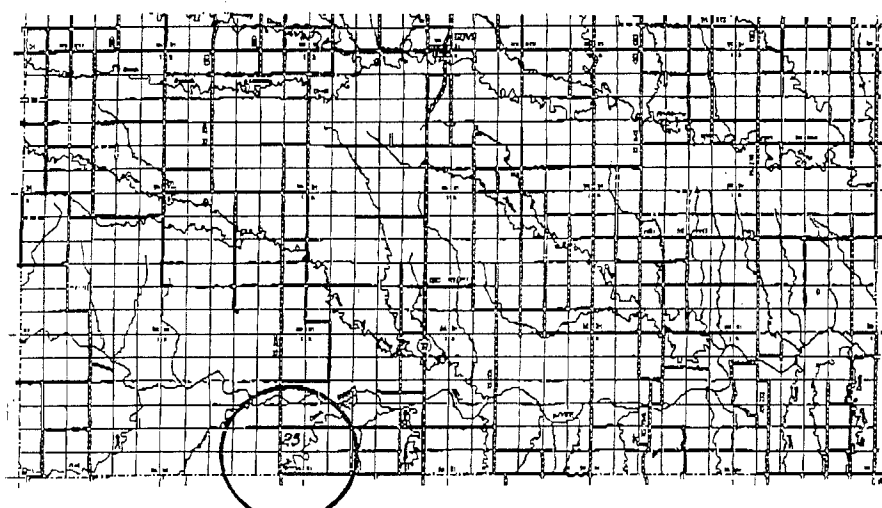
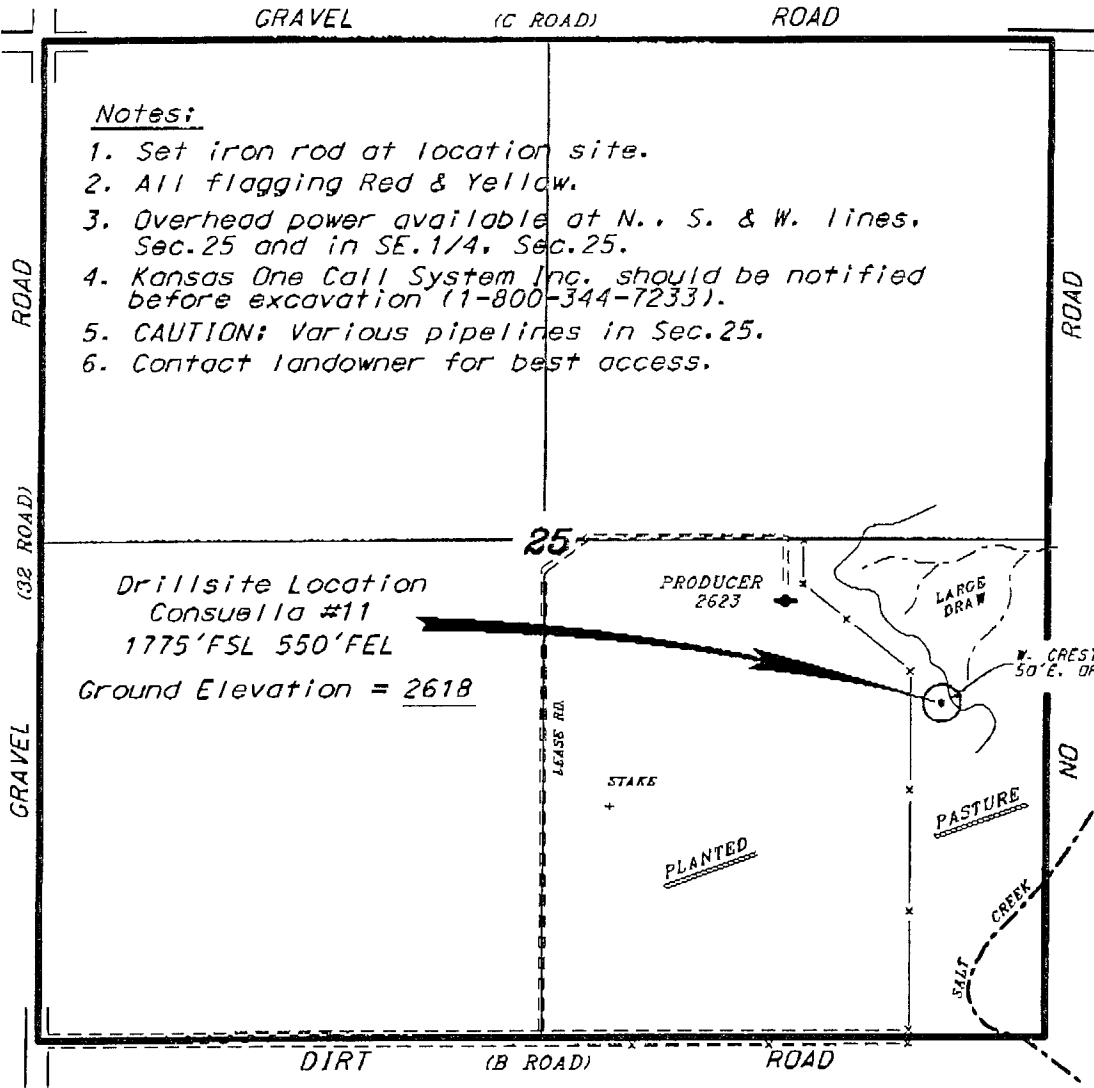
STAKE  
+

PLANTED

PASTURE

SMALL  
CREEK

\*Ingress and egress to location as shown on this  
plot is per usage only and may not be legally  
opened for public use. Contact landowner,  
tenant and county road department for access.



- Controlling data is based upon the best maps and photographs available to us and upon a regular section of land containing 640 acres.
- Approximate section lines were determined using the normal standard of care of oilfield surveyors practicing in the state of Kansas. The section corners, which establish the precise section lines, were not necessarily located, and the exact location of the drillsite location in the section is not guaranteed. Therefore, the operator securing this service and accepting this plot and all other parties relying thereon agree to hold Central Kansas Oilfield Services, Inc., its officers and employees harmless from all losses, costs and expenses and hold entities released from any liability from incidental or consequential damages.
- Elevations derived from National Geodetic Vertical Datum.

Date March 6, 2007

CENTRAL KANSAS OILFIELD SERVICES, INC. (620)792-1977

RECEIVED  
KANSAS CORPORATION COMMISSION  
JUN 19 2007  
CONSERVATION DIVISION  
WICHITA, KS

## LITHOLOGY

### HEEBNER

- 3674-80 Shale black, firm, carbonaceous
- 3680-94 Shale gray, gray green, soft
- 3694-3708 Limestone white, tan, hard, chalky, poor porosity, dense, no show, abundant Chert white
- 3708-12 Shale as above

### LANSING A ZONE

- 3712-20 Limestone cream, firm, oolitic, chalky, poor porosity, some fair vuggy porosity, spotty brown stain, good cut, show free oil
- 3720-40 Limestone cream, hard, dense, abundant Chert white
- 3740-45 Shale as above
- 3745-50 Limestone cream, firm, chalky, microcrystalline, poor porosity, some fair vuggy porosity, spotty brown stain, good cut, trace free oil
- 3750-60 Shale gray, green, firm
- 3760-3805 Limestone white, cream, hard, dense, chalky, abundant Chert white
- 3805-10 Limestone white, hard, chalky, oolitic, granular, poor vuggy porosity, very spotty brown stain, good cut
- 3810-18 Limestone white, cream, hard, chalky, dense, poor porosity, no show
- 3818-20 Shale gray, green, as above
- 3820-35 Grainstone gray brown, firm, very oolitic, good moldic porosity, rare brown stain, fair cut

RECEIVED  
KANSAS CORPORATION COMMISSION

JUN 19 2007

KANSAS CORPORATION COMMISSION

3835-55 Limestone white, very hard, dense, some Chert as above

3855-60 Shale as above

3860-70 Limestone tan, white, buff, hard, dense, Chert as above

3870-80 Shale black, hard, carbonaceous

3880-90 Limestone tan, very hard, dense

3890-3900 Limestone buff, firm, very chalky, poor porosity, no show

3900-20 Limestone cream, hard, dense, chalky, abundant Chert white

3920-25 Shale as above

3925-40 Limestone white, firm, very chalky, oolitic, granular, poor vuggy porosity with spotty brown stain, good cut

3940-50 Shale as above

3950-60 Limestone white, firm, granular, oolitic, good porosity, spotty brown stain, good cut, fair odor

3960-70 Shale black, firm, carbonaceous

3970-80 Limestone white, firm, microsucrosic, chalky, poor-fair intercrystalline porosity, good vuggy porosity, even brown stain, good cut & fair odor

3980-4000 Limestone white, hard, dense, very chalky, dirty, Cherty

4000-10 Shale as above

4010-20 Limestone buff, brown, hard, microcrystalline, poor porosity, trace very spotty brown stain, very weak cut

4020-40 Limestone buff, very hard, dense, no show

BKC

4040-70 Shale gray, green, firm, fissile

MARMATON

RECEIVED  
KANSAS CORPORATION COMMISSION

JUN 19 2007

ST. LOUIS, MO

- 4070-90 Limestone white, very hard, dense, some thin interbedded Shale as above  
4090-4120 Shale gray, green, hard, calcareous  
4120-60 Limestone white, hard, dense, no show  
4160-70 Shale gray, green, firm

#### PAWNEE

- 4170-90 Limestone cream gray, very hard, dense, chalky  
4190-4200 Shale as above  
4200-10 Limestone white, hard, microcrystalline, chalky, trace poor vuggy porosity with rare spotty brown stain, fair cut  
4210-20 Shale as above

#### FORT SCOTT

- 4220-45 Limestone cream, buff, hard, cryptocrystalline, no show

#### CHEROKEE SHALE

- 4245-50 Shale black, hard, carbonaceous  
4250-80 Shale as above with interbedded Limestone as above

#### JOHNSON

- 4280-90 Limestone white, firm-hard, chalky, fossiliferous, poor porosity, no show  
4290-4300 Shale gray, green, red, firm, waxy  
4300-10 Sandstone white, friable, fine grain, well sorted, clay filled, calcareous  
4310-20 Shale as above

#### MISSISSIPPIAN LIME

- 4320-50 Limestone tan, very hard, dense, no show  
4350-76 Sandstone white, friable, fine grain, clay filled, salt & pepper, no show with thin interbedded Limestone as above

RECEIVED  
KANSAS CORPORATION COMMISSION

2007

2007