

15-063-21355

36-15s-30w

CRUDE OIL TESTING, INC.

DATE 10/30/90

TEST TICKET NO. 5872

Company: BEREXCO INC  
Company Address: 110 N. BROADWAY, STE 970, WICHITA, KS 67202  
Location: Sec. 36 Twp. 15S Range 30W Co. GOVE State KS  
Well Name & Number: #3 NEWTON Code E1

ENGINEERING DATA	Elevation 2573 KB	Drill Pipe Length 3231	ID 3.8 "
	Mud Viscosity 43	Weight Pipe Length	
	Mud Weight 9.3	Drill Collar Length 474	ID 2.25"
	Water Loss 9.6	Top Packer Depth 3731	
	Type of Mud CHEMICAL	Bottom Packer Depth 3736	
	Anchor Length 33	Tool Joint Size 4.5	XH
	Hole Size 7 7/8	Test Tool Size 5 1/2	
	Casing Size 8 5/8	Packer Size 6 3/4	
	Surface Choke 3/4	Reversed Out No	
	Bottom Choke 3/4	Recorder # 13248	
	Extra Equipment	JARS & SAFETY JOINT	

REMARKS DST #2

FORMATION	LANSING Zone E&F	Test Type Conventional
	Interval 3736 To 3769	Total Depth 3769
	Open 30 Shut In 15	Open 30 Shut In 30
	Packer(s) Set 01:03AM	Started Off Bottom 02:50AM
	Blow 1st Opening WEAK BLOW 1/2 INCH IN BUCKET	
	2nd Opening WEAK BLOW DIED IN 4 MIN	

RECOVERY	Total Feet 5
	Recovered 5 feet of DRILLING MUD (NO SHOW)

CALCULATED RECOVERY	Gas Gravity (Oil)	Oil Test Area Temperature 118F	Water Test Water Chlorides	Mud Mud System Chlorides 4,000	PPM PPM
---------------------	-------------------	--------------------------------	----------------------------	--------------------------------	---------

		FIELD READING	OFFICE READING	
PRESSURE	(A) Initial Hydrostatic Mud	1839	1900	PSI
	(B) First Initial Flow Pressure	43	76	PSI
	(C) First Final Flow Pressure	43	76	PSI
	(D) Initial Closed-In Pressure	457	420	PSI
	(E) Second Initial Flow Pressure	43	62	PSI
	(F) Second Final Flow Pressure	43	62	PSI
	(G) Final Closed-In Pressure	128	131	PSI
	(H) Final Hydrostatic Mud	1818	1857	PSI

36-15s-30w

# CRUDE OIL TESTING INC.

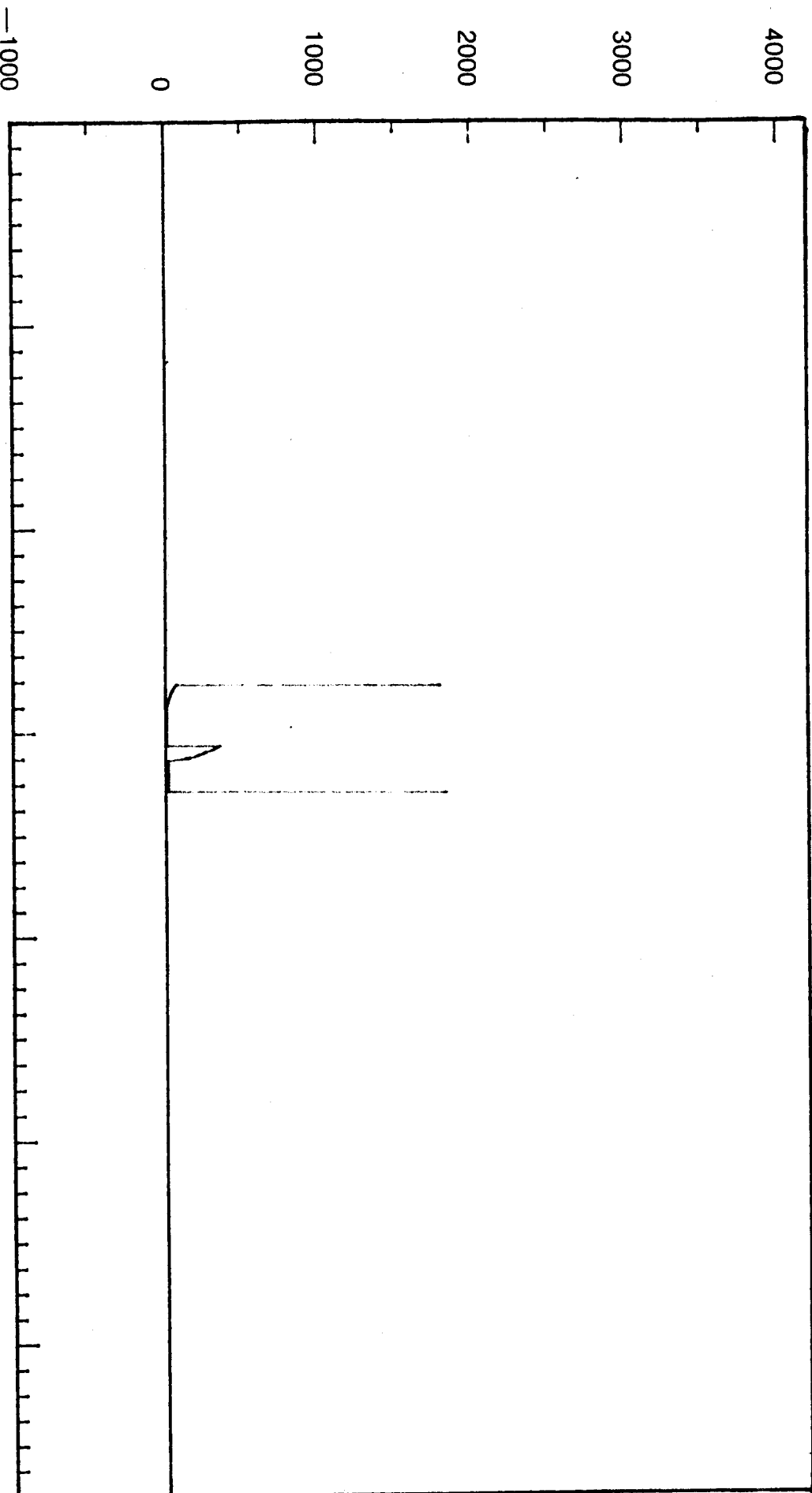
FOR: BEREXCO, INC.

TEST 5872

DST #2

10/30/90

PRESSURE



TIME (MINUTES)

PRESSURE BREAKDOWN

TEST TICKET NO. 5872

DST Number: 2 Recorder Number: 13248 Clock Number: 19124

First Flow Pressure		Initial Shut-In		Second Flow Pressure		Final Shut-In	
Mins.	Press.	Mins.	Press.	Mins.	Press.	Mins.	Press.
0	77	0	77	0	65	0	65
3	77	3	220	3	65	3	66
6	77	6	281	6	65	6	66
9	77	9	327	9	65	9	70
12	77	12	381	12	65	12	75
15	77	15	418	15	65	15	78
18	77			18	65	18	87
21	77			21	65	21	93
24	77			24	65	24	105
27	77			27	65	27	117
30	77			30	65	30	

EQUIPMENT DATA  
TOOL SEQUENCE REPORT

DST Number: 2

TEST TICKET NO. 5872

WELL NAME: #3 NEWTON

WELL LOCATION: SEC36-15S-30W

Tool #	Tool	Length	I.D.	O.D.
1	Drill Pipe - 4.5"	3231.00	3.826	4.50
5	Drill Collar- 6.25"	474.00	2.250	6.25
8	Circulating Sub	1.00	3.000	5.00
8	Circulating Sub	1.00	3.000	5.00
9	Shut-In Tool	5.45	0.870	5.00
10	Hydraulic Tool	5.60	1.000	5.00
12	Jars	7.00	3.000	5.00
13	Safety Joint	2.31	3.000	5.00
14	Packer	5.35	1.530	6.75
14	Packer	5.35	1.530	6.75
6	Anchor	29.00	2.750	5.00
15	Recorder Carrier	1.00		5.00
16	Bull Plug	2.00		5.00
	Total Depth	3770.06		

CRUDE OIL TESTING, INC.

DATE 10/31/90

TEST TICKET NO. 5927

Company: BEREXCO, INC  
 Company Address: 110 N BROADWAY, STE 970, WICHITA, KS 67202  
 Location: Sec. 36 Twp. 15S Range 30W Co. GOVE State KS  
 Well Name & Number: #3 NEWTON Code E1

ENGINEERING DATA	Elevation 2573 KB	Drill Pipe Length 3421	ID 3.8 "
	Mud Viscosity 44	Weight Pipe Length	
	Mud Weight 9.2	Drill Collar Length 474	ID 2.25"
	Water Loss 9.5	Top Packer Depth 3915	
	Type of Mud CHEMICAL	Bottom Packer Depth 3920	
	Anchor Length 30	Tool Joint Size 4.5	XH
	Hole Size 7 7/8	Test Tool Size 5 1/2	
	Casing Size 8 5/8	Packer Size 6 3/4	
	Surface Choke 3/4	Reversed Out No	
	Bottom Choke 3/4	Recorder # 13248	
	Extra Equipment	SAFETY JOINT	

REMARKS DST #3

FORMATION	LANSING Zone K	Test Type Conventional
	Interval 3920 To 3950	Total Depth 3950
	Open 15 Shut In 30	Open 30 Shut In 30
	Packer(s) Set 01:08AM	Started Off Bottom 02:55AM
	Blow 1st Opening VERY WEAK 1/4 INCH IN BUCKET	
	2nd Opening NO BLOW FLUSHED TOOL-NO HELP	

RECOVERY Total Feet 5  
 Recovered 5 feet of DRILLING MUD

CALCULATED RECOVERY	Gas	Oil	Water	Mud	
	Gravity (Oil)		Test Water Chlorides		PPM
	Test Area Temperature 115F		Mud System Chlorides	4,000	PPM

		FIELD READING	OFFICE READING	
PRESSURE	(A) Initial Hydrostatic Mud	1966	2008	PSI
	(B) First Initial Flow Pressure	43	41	PSI
	(C) First Final Flow Pressure	43	41	PSI
	(D) Initial Closed-In Pressure	319	302	PSI
	(E) Second Initial Flow Pressure	43	38	PSI
	(F) Second Final Flow Pressure	43	38	PSI
	(G) Final Closed-In Pressure	277	281	PSI
	(H) Final Hydrostatic Mud	1945	1956	PSI

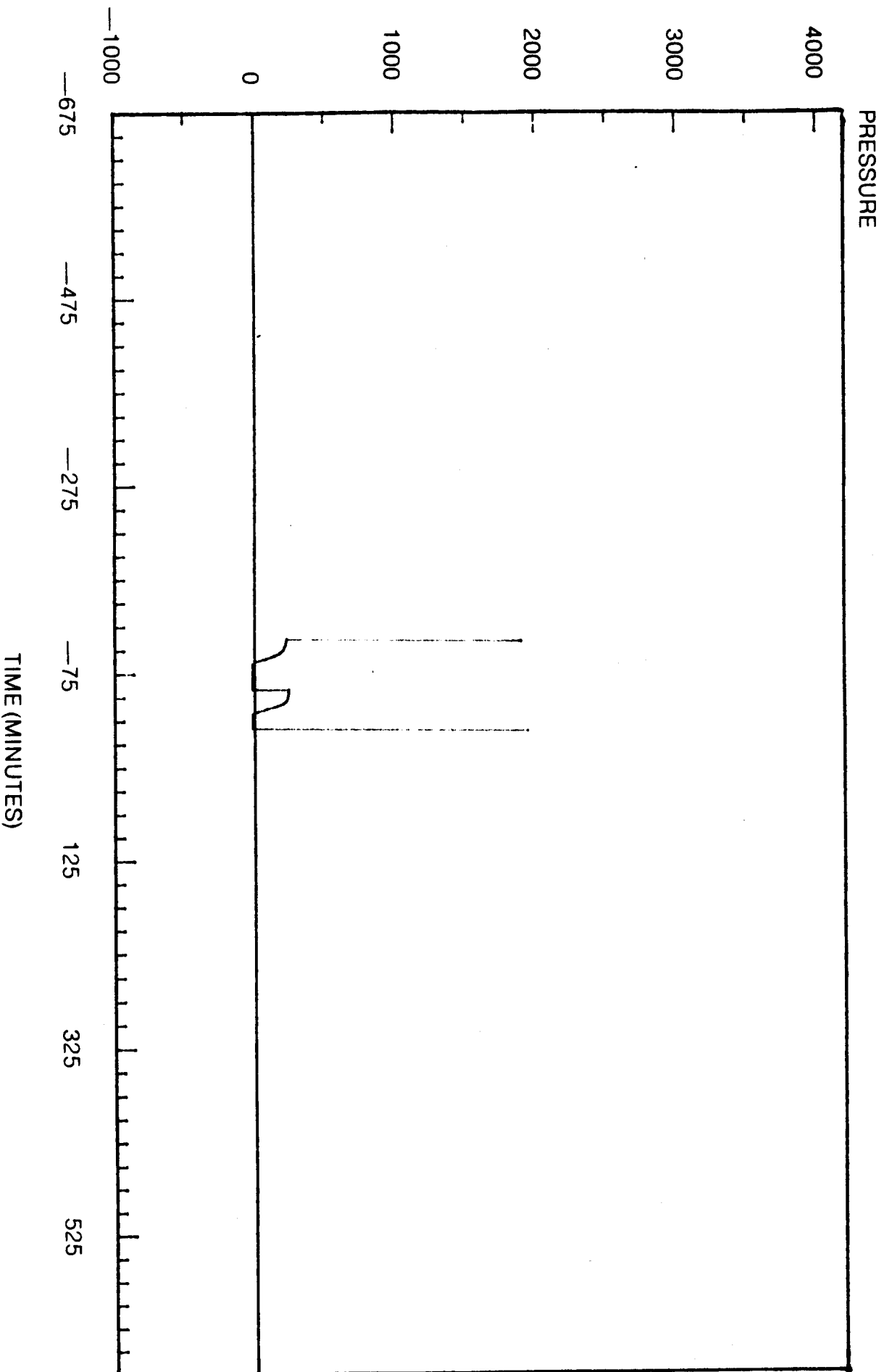
# CRUDE OIL TESTING INC.

FOR: BEREXCO, INC.

TEST 5927

DST #3

10/31/90



PRESSURE BREAKDOWN

TEST TICKET NO. 5927

DST Number: 3 Recorder Number: 13248 Clock Number: 19124

First Flow Pressure		Initial Shut-In		Second Flow Pressure		Final Shut-In	
Mins.	Press.	Mins.	Press.	Mins.	Press.	Mins.	Press.
0	42	0	42	0	39	0	39
3	42	3	81	3	39	3	63
6	42	6	149	6	39	6	138
9	42	9	218	9	39	9	197
12	42	12	264	12	39	12	234
15	42	15	284	15	39	15	255
		18	293	18	39	18	265
		21	296	21	39	21	274
		24	299	24	39	24	277
		27	301	27	39	27	281

EQUIPMENT DATA  
TOOL SEQUENCE REPORT

DST Number: 3

TEST TICKET NO. 5927

WELL NAME: #3 NEWTON

WELL LOCATION: SEC. 36-15S-30W

Tool #	Tool	Length	I.D.	O.D.
1	Drill Pipe - 4.5"	3421.00	3.826	4.50
5	Drill Collar- 6.25"	474.00	2.250	6.25
8	Circulating Sub	1.00	3.000	5.00
8	Circulating Sub	1.00	3.000	5.00
9	Shut-In Tool	5.45	0.870	5.00
10	Hydraulic Tool	5.60	1.000	5.00
13	Safety Joint	2.31	3.000	5.00
14	Packer	5.35	1.530	6.75
14	Packer	5.35	1.530	6.75
6	Anchor	26.00	2.750	5.00
15	Recorder Carrier	1.00		5.00
16	Bull Plug	2.00		5.00
	Total Depth	3950.06		