



15-063-21619

21-15s-30w

### DIAMOND TESTING

P.O. Box 157

HOISINGTON, KANSAS 67544

(620) 653-7550 • (800) 542-7313

STC 21098.D251

Page 1 of 3 Pages

Company L. D. Drilling, Inc. Lease & Well No. Roemer Trust "A" No. 1

Elevation 2627KB Formation Lansing/Kansas City 200' "K" Effective Pay -- Ft. Ticket No. 2130

Date 5-15-06 Sec. 21 Twp. 15S Range 30W County Gove State Kansas

Test Approved By Kim B. Shoemaker Diamond Representative Roger D. Friedly

Formation Test No. 1 Interval Tested from 3,977 ft. to 4,011 ft. Total Depth 4,011 ft.

Packer Depth 3,972 ft. Size 6 3/4 in. Packer Depth -- ft. Size -- in.

Packer Depth 3,977 ft. Size 6 3/4 in. Packer Depth -- ft. Size -- in.

Depth of Selective Zone Set          ft.

Top Recorder Depth (Inside) 3,965 ft. Recorder Number 21098 Cap. 5,000 psi

Bottom Recorder Depth (Outside) 4,008 ft. Recorder Number 13387 Cap. 4,000 psi

Below Straddle Recorder Depth          ft. Recorder Number          Cap.          psi

Drilling Contractor L. D. Drilling, Inc. - Rig 1 Drill Collar Length -- ft. I.D. -- in.

Mud Type Chemical Viscosity 49 Weight Pipe Length -- ft. I.D. -- in.

Weight 9.2 Water Loss 10.0 cc. Drill Pipe Length 3,952 ft. I.D. 3 1/2 in.

Chlorides 4,000 P.P.M. Test Tool Length 25 ft. Tool Size 3 1/2 - IF in.

Jars: Make Bowen Serial Number Not Run Anchor Length 34 ft. Size 4 1/2 - FH in.

Did Well Flow? No Reversed Out No Surface Choke Size 1 in. Bottom Choke Size 5/8 in.

Main Hole Size 7 7/8 in. Tool Joint Size 4 1/2 - XH in.

Blow: 1st Open: Weak, 1/2 in., blow; increasing to 3 ins. No blow back during shut-in.

2nd Open: Weak surface blow; increasing to 3 ins. No blow back during shut-in.

Recovered 112 ft. of muddy water = 1.149120 bbls. (Grind out: 40%-mud; 60%-water)

Recovered          ft. of         

Recovered          ft. of         

Recovered          ft. of         

Recovered          ft. of         

Remarks Tool Sample Grind Out: 100%-salt water with a few oil specks

Time Set Packer(s) 4:27 ~~P.M.~~ <sup>A.M.</sup> Time Started Off Bottom 6:27 ~~P.M.~~ <sup>A.M.</sup> Maximum Temperature 118°

Initial Hydrostatic Pressure ..... (A) 1883 P.S.I.

Initial Flow Period ..... Minutes 30 (B) 7 P.S.I. to (C) 31 P.S.I.

Initial Closed In Period ..... Minutes 30 (D) 986 P.S.I.

Final Flow Period ..... Minutes 30 (E) 32 P.S.I. to (F) 55 P.S.I.

Final Closed In Period ..... Minutes 30 (G) 950 P.S.I.

Final Hydrostatic Pressure ..... (H) 1885 P.S.I.



**DIAMOND TESTING**  
P. O. Box 157  
HOISINGTON, KANSAS 67544  
(800) 542-7313

**FLUID SAMPLE DATA**

Company L. D. Drilling, Inc.  
Lease & Well No. Roemer Trust "A" No. 1  
Date 5-15-06 Sec. 21 Twp. 15 S Range 30 W  
Formation Test No. 1 Interval Tested From 3,977 ft. to 4,011 ft. Total Depth 4,011 ft.  
Formation Lansing/Kansas City 200' "K"

	<u>MUD PIT</u>	<u>RECOVERY</u>	<u>RECOVERY</u>
Viscosity	<u>49</u> CP	<u>--</u> CP	
Weight	<u>9.2</u>	<u>--</u>	
Water Loss	<u>10.0</u> CC	<u>--</u> CC	
PH Factor	<u>10.5</u>	<u>--</u>	<u>Water</u> <u>7.0</u>

	<u>RESISTIVITY</u>	<u>CHLORIDE CONTENT</u>
Recovery Water	<u>.30 @ 52 °F.</u>	<u>32,000 ppm</u>
Recovery Mud	<u>-- @ -- °F.</u>	<u>-- ppm</u>
Recovery Mud Filtrate	<u>-- @ -- °F.</u>	<u>-- ppm</u>
Mud Pit Sample	<u>1.40 @ 50 °F.</u>	<u>6,000 ppm</u>
Mud Pit Sample Filtrate	<u>1.60 @ 52 °F.</u>	<u>5,000 ppm</u>

Sample Taken By ROGER D. FRIEDLY

Witness By KIM B. SHOEMAKER

Remarks Pit filtrate triton dish chlorides were 4,000 Ppm  
Recovery water dish chlorides were 28,000 Ppm

## GENERAL INFORMATION

### Client Information:

Company: L.D. DRILLING, INC.

Contact: L.D. DAVIS

Phone: Fax: e-mail:

### Site Information:

Contact: KIM SHOEMAKER

Phone: Fax: e-mail:

### Well Information:

Name: ROMER TRUST A #1

Operator: L. D. DRILLING, INC.

Location-Downhole: DST #1 LKC 200' (K) 3,977' - 4,011'

Location-Surface: SEC 21-15S-30W GOVE COUNTY

### Test Information:

Company: DIAMOND TESTING

Representative: ROGER D. FRIEDLY

Supervisor: KIM SHOEMAKER

Test Type: CONVENTIONAL Job Number:

Test Unit: NO. 1

Start Date: 2006/05/15 Start Time: 02:15:00

End Date: 2006/05/15 End Time: 08:23:00

Report Date: Prepared By:

Qualified By:

### Remarks:

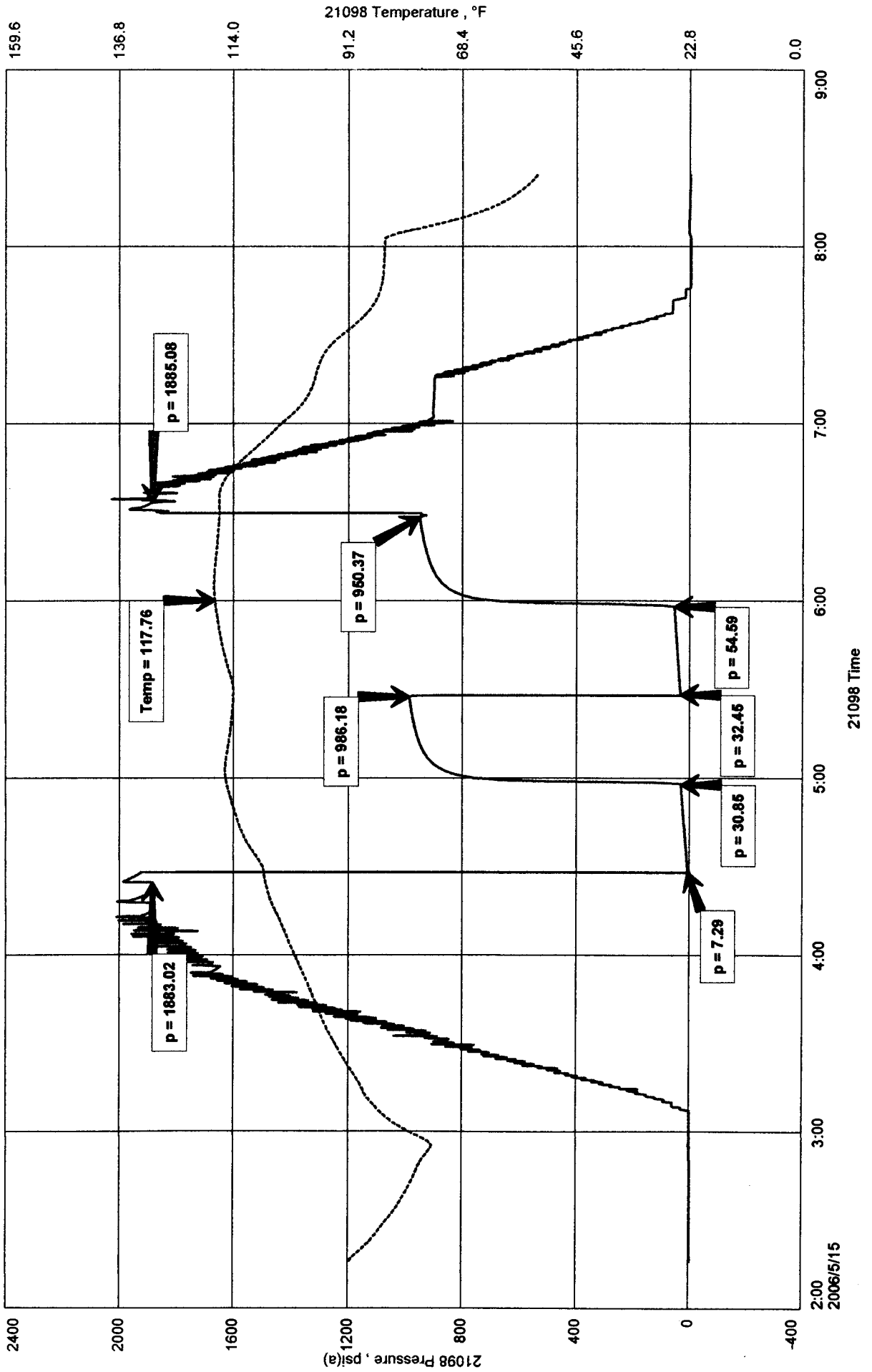
RECOVERED: 112 MW 40% MUD, 60% WTR

TOOL SAMPLE: 100% SW WITH A FEW OIL SPECKS

L.D. DRILLING, INC.  
DST #1 LKC 200' (K) 3,977' - 4,011'  
Start Test Date: 2006/05/15  
Final Test Date: 2006/05/15

ROMER TRUST A #1  
Formation: DST #1 LKC 200' (K) 3,977' - 4,011'  
Pool: WILDCAT

# ROMER TRUST A #1

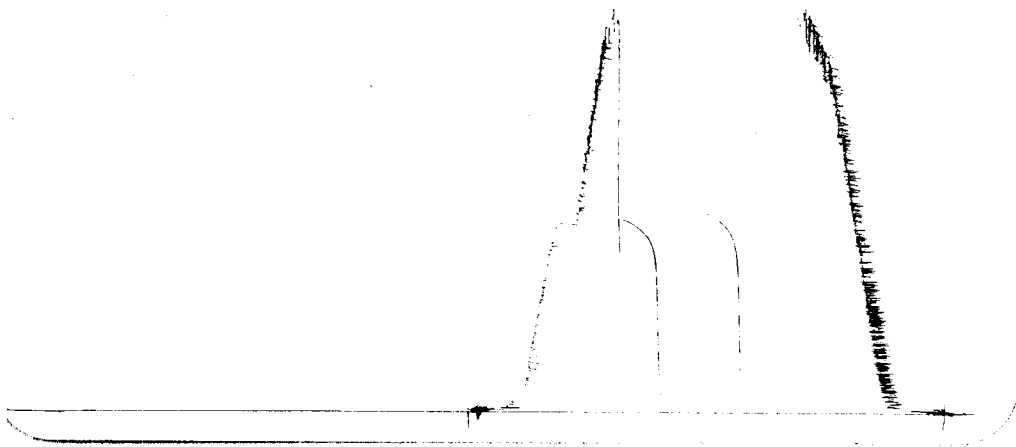


DST # 1 Outside 13387

LICC 200' (K)

3977-4011

LOC 4008



This is an actual photograph of recorder chart.

POINT	PRESSURE		Elec. Office Reading	PSI
	Field Reading			
(A) Initial Hydrostatic Mud	1883	1883	1883	PSI
(B) First Initial Flow Pressure	7	7	7	PSI
(C) First Final Flow Pressure	31	31	31	PSI
(D) Initial Closed-in Pressure	986	986	986	PSI
(E) Second Initial Flow Pressure	32	32	32	PSI
(F) Second Final Flow Pressure	55	55	55	PSI
(G) Final Closed-in Pressure	950	950	950	PSI
(H) Final Hydrostatic Mud	1885	1885	1885	PSI

RECEIVED



# DIAMOND TESTING

P.O. Box 157  
HOISINGTON, KANSAS 67544  
(620) 653-7550 • (800) 542-7313  
STC 21098.D252

Company L. D. Drilling, Inc. Lease & Well No. Roemer Trust "A" No. 1  
Elevation 2627KB Formation Johnson Effective Pay -- Ft. Ticket No. 2131  
Date 5-16-06 Sec. 21 Twp. 15S Range 30W County Gove State Kansas  
Test Approved By Kim B. Shoemaker Diamond Representative Roger D. Friedly

Formation Test No. 2 Interval Tested from 4,260 ft. to 4,305 ft. Total Depth 4,305 ft.  
Packer Depth 4,255 ft. Size 6 3/4 in. Packer Depth -- ft. Size -- in.  
Packer Depth 4,260 ft. Size 6 3/4 in. Packer Depth -- ft. Size -- in.  
Depth of Selective Zone Set          ft.

Top Recorder Depth (Inside) 4,248 ft. Recorder Number 21098 Cap. 5,000 psi  
Bottom Recorder Depth (Outside) 4,302 ft. Recorder Number 13387 Cap. 4,000 psi  
Below Straddle Recorder Depth          ft. Recorder Number          Cap.          psi

Drilling Contractor L. D. Drilling, Inc. - Rig 1 Drill Collar Length -- ft. I.D. -- in.  
Mud Type Chemical Viscosity 47 Weight Pipe Length -- ft. I.D. -- in.  
Weight 9.3 Water Loss 11.6 cc. Drill Pipe Length 4,235 ft. I.D. 3 1/2 in.  
Chlorides 2,200 P.P.M. Test Tool Length 25 ft. Tool Size 3 1/2 - IF in.  
Jars: Make Bowen Serial Number Not Run Anchor Length 45 ft. Size 4 1/2 - FH in.  
Did Well Flow? No Reversed Out No Surface Choke Size 1 in. Bottom Choke Size 5/8 in.  
Main Hole Size 7 7/8 in. Tool Joint Size 4 1/2 - XH in.

Blow: 1st Open: Weak, 1/2 in., blow, increasing to 6 ins. No blow back during shut-in.  
2nd Open: Weak surface blow, increasing to 6 ins. No blow back during shut-in.

Recovered 15 ft. of water & oil cut mud = .153900 bbls. (Grind out: 24%-water; 30%-oil; 46%-mud)  
Recovered 124 ft. of oil & water cut mud = 1.272240 bbls. (Grind out: 4%-oil; 46%-water; 50%-mud)  
Recovered 139 ft. of TOTAL FLUID = 1.426140 bbls.  
Recovered          ft. of           
Recovered          ft. of           
Remarks Tool Sample Grind Out: 6%-oil; 45%-mud; 49%-water

Time Set Packer(s) 4:13 ~~XXM~~ P.M. Time Started Off Bottom 7:13 ~~XXM~~ P.M. Maximum Temperature 118°  
Initial Hydrostatic Pressure ..... (A) 1988 P.S.I.  
Initial Flow Period ..... Minutes 30 (B) 7 P.S.I. to (C) 37 P.S.I.  
Initial Closed In Period ..... Minutes 45 (D) 1105 P.S.I.  
Final Flow Period ..... Minutes 45 (E) 40 P.S.I. to (F) 70 P.S.I.  
Final Closed In Period ..... Minutes 60 (G) 1086 P.S.I.  
Final Hydrostatic Pressure ..... (H) 1981 P.S.I.



**DIAMOND TESTING**  
P. O. Box 157  
**HOISINGTON, KANSAS 67544**  
(800) 542-7313

**FLUID SAMPLE DATA**

Company L. D. Drilling, Inc.

Lease & Well No. Roemer Trust "A" No. 1

Date 5-16-06 Sec. 21 Twp. 15 S Range 30 W

Formation Test No. 2 Interval Tested From 4,260 ft. to 4,305 ft. Total Depth 4,305 ft.

Formation Johnson

	<u>MUD PIT</u>	<u>RECOVERY</u>	<u>RECOVERY</u>
Viscosity	<u>47</u> CP	<u>--</u> CP	
Weight	<u>9.3</u>	<u>--</u>	
Water Loss	<u>11.6</u> CC	<u>--</u> CC	
PH Factor	<u>8.5</u>	<u>--</u>	<u>Water</u> <u>7.0</u>

	<u>RESISTIVITY</u>	<u>CHLORIDE CONTENT</u>
Recovery Water	<u>.30</u> @ <u>74</u> °F.	<u>22,000</u> ppm
Recovery Mud	<u>--</u> @ <u>--</u> °F.	<u>--</u> ppm
Recovery Mud Filtrate	<u>--</u> @ <u>--</u> °F.	<u>--</u> ppm
Mud Pit Sample	<u>1.50</u> @ <u>79</u> °F.	<u>3,500</u> ppm
Mud Pit Sample Filtrate	<u>1.60</u> @ <u>79</u> °F.	<u>3,200</u> ppm

Sample Taken By ROGER D. FRIEDLY

Witness By KIM B. SHOEMAKER

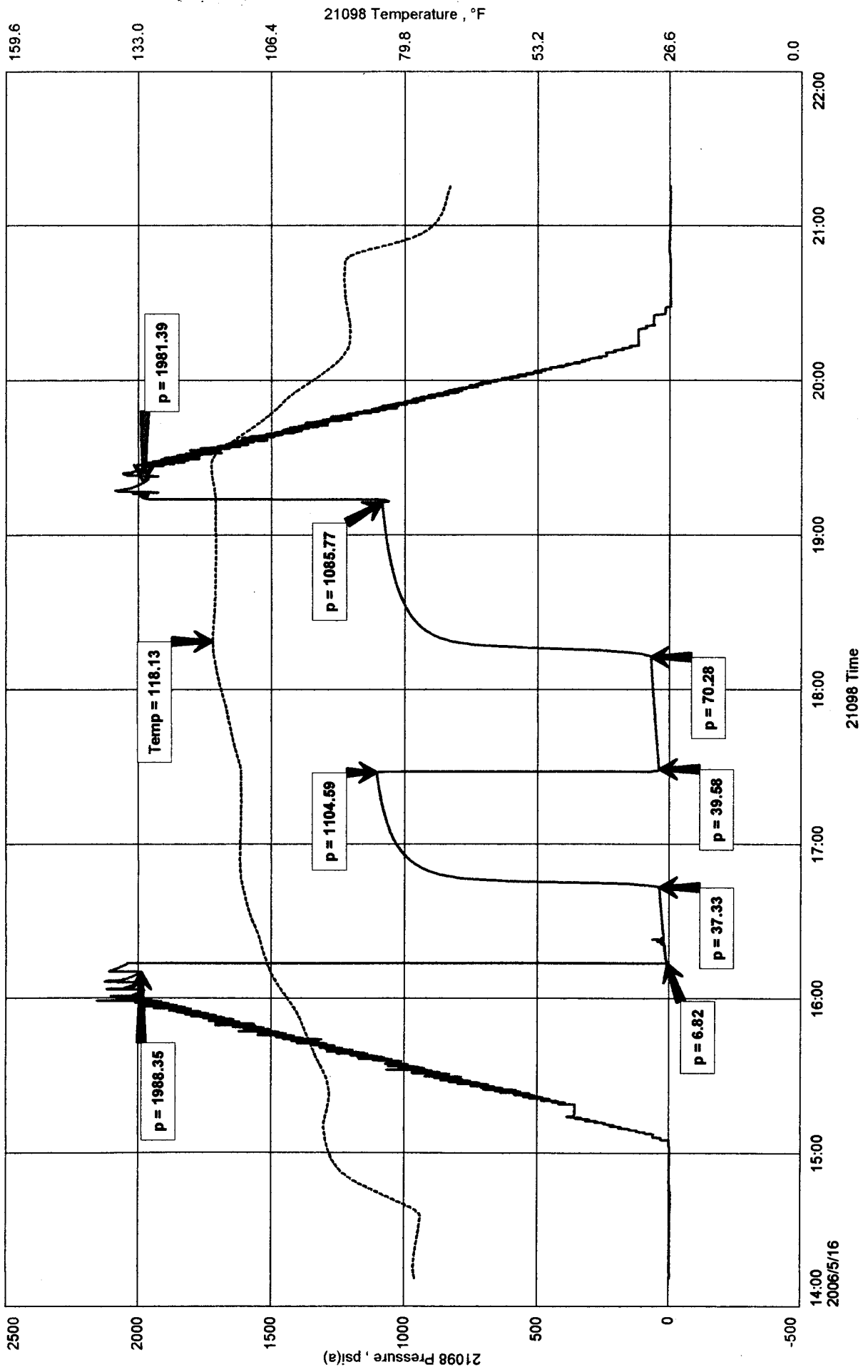
Remarks Pit filtrate triton dish chlorides were 2,200 Ppm  
Recovery water dish chlorides were 16,500 Ppm



L.D DRILLING, INC.  
DST #2 JOHNSON 4,260' - 4,305'  
Start Test Date: 2006/05/16  
Final Test Date: 2006/05/16

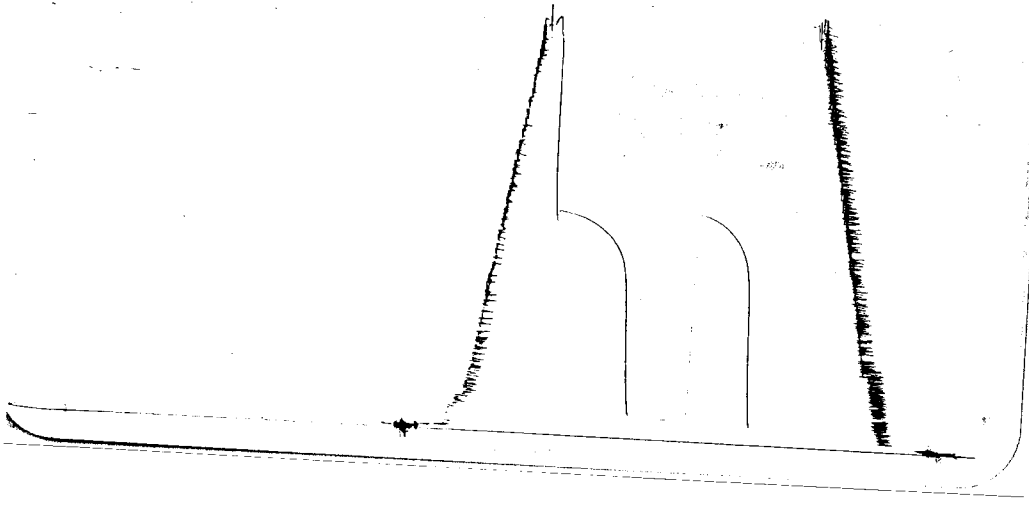
ROMER TRUST A #1  
Formation: DST #2 JOHNSON 4,260' - 4,305'  
Pool: WILDCAT

# ROMER TRUST A #1



DST # 2 outside 13387  
 Johnson

4260-4305  
 Loc 4302



This is an actual photograph of recorder chart.

POINT	PRESSURE		Elec. Office Reading	PSI
	Field Reading			
(A) Initial Hydrostatic Mud	1988	1988	1988	PSI
(B) First Initial Flow Pressure	7	7	7	PSI
(C) First Final Flow Pressure	37	37	37	PSI
(D) Initial Closed-in Pressure	1105	1105	1105	PSI
(E) Second Initial Flow Pressure	40	40	40	PSI
(F) Second Final Flow Pressure	70	70	70	PSI
(G) Final Closed-in Pressure	1086	1086	1086	PSI
(H) Final Hydrostatic Mud	1981	1981	1981	PSI

RECEIVED