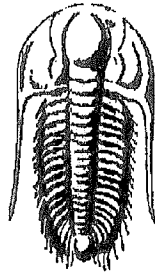


15-109-20914

19-15s-32w

IND



**TRILOBITE
TESTING, INC.**

DRILL STEM TEST REPORT

Prepared For: **Brito Oil Co., Inc.**

1700 N Waterfront PKWY
Bld 300, Ste C
Wichita KS 67206

ATTN: Paul Gunzelman

19-15s-32w Logan KS

Fairleigh A #1-19

Start Date: 2010.06.08 @ 00:35:05

End Date: 2010.06.08 @ 06:11:59

Job Ticket #: 37894 DST #: 1

**CONFIDENTIAL
JUL 19 2010
KCC**

RECEIVED

JUL 21 2010

KCC WICHITA

Trilobite Testing, Inc
PO Box 1733 Hays, KS 67601
ph: 785-625-4778 fax: 785-625-5620

Brito Oil Co., Inc.

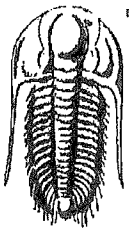
Fairleigh A #1-19

19-15s-32w Logan KS

DST # 1

Attamont

2010.06.08



**TRILOBITE
TESTING, INC**

DRILL STEM TEST REPORT

Brito Oil Co., Inc.
1700 N Waterfront PKWY
Bld 300, Ste C
Wichita KS 67206
ATTN: Paul Gunzelman

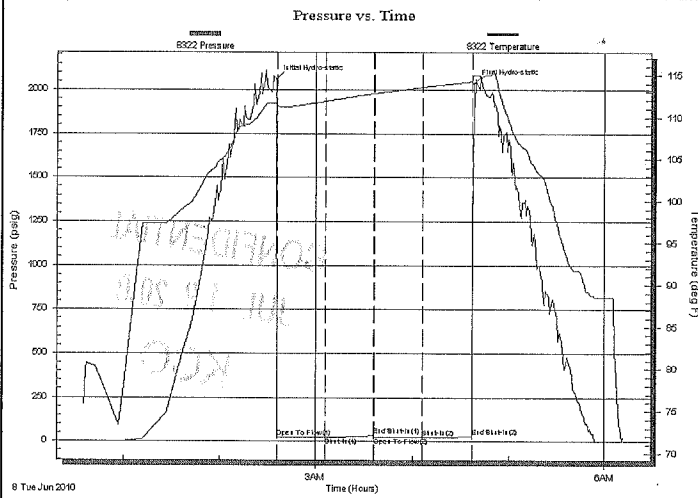
Fairleigh A #1-19
19-15s-32w Logan KS
Job Ticket: 37894 DST#: 1
Test Start: 2010.06.08 @ 00:35:05

GENERAL INFORMATION:

Formation: **Altamont**
 Deviated: No Whipstock: ft (KB)
 Time Tool Opened: 02:36:15
 Time Test Ended: 06:11:59
 Interval: **4154.00 ft (KB) To 4234.00 ft (KB) (TVD)**
 Total Depth: 4234.00 ft (KB) (TVD)
 Hole Diameter: 7.88 inches Hole Condition: Fair
 Test Type: Conventional Bottom Hole
 Tester: Brandon Domsch
 Unit No: 48
 Reference Elevations: 2803.00 ft (KB)
 2798.00 ft (CF)
 KB to GR/CF: 5.00 ft

Serial #: 8322 Inside
 Press@RunDepth: 22.97 psig @ 4155.00 ft (KB) Capacity: 8000.00 psig
 Start Date: 2010.06.08 End Date: 2010.06.08 Last Calib.: 2010.06.08
 Start Time: 00:35:05 End Time: 06:11:59 Time On Btm: 2010.06.08 @ 02:36:00
 Time Off Btm: 2010.06.08 @ 04:38:15

TEST COMMENT: IF: 1/4 inch died in 11 mins.
 IS: No return.
 FF: No blow.
 FS: No return.



PRESSURE SUMMARY

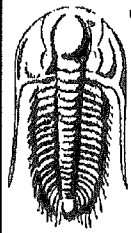
Time (Min.)	Pressure (psig)	Temp (deg F)	Annotation
0	2057.61	111.63	Initial Hydro-static
1	21.79	110.78	Open To Flow (1)
30	21.96	111.90	Shut-In(1)
60	33.87	112.81	End Shut-In(1)
61	22.21	112.82	Open To Flow (2)
91	22.97	113.60	Shut-In(2)
121	28.72	114.28	End Shut-In(2)
123	2035.65	114.90	Final Hydro-static

Recovery

Length (ft)	Description	Volume (bbl)
1.00	Mw/ O spots 100% m	0.00
0.00	GIP = 0	0.00

Gas Rates

Choke (inches)	Pressure (psig)	Gas Rate (Mcf/d)



**TRILOBITE
TESTING, INC**

DRILL STEM TEST REPORT

TOOL DIAGRAM

Brito Oil Co., Inc.
1700 N Waterfront PKWY
Bld 300, Ste C
Wichita KS 67206
ATTN: Paul Gunzelman

Fairleigh A #1-19
19-15s-32w Logan KS
Job Ticket: 37894 **DST#: 1**
Test Start: 2010.06.08 @ 00:35:05

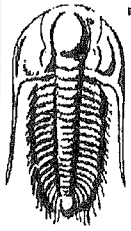
Tool Information

Drill Pipe:	Length: 3980.00 ft	Diameter: 3.80 inches	Volume: 55.83 bbl	Tool Weight: 1500.00 lb
Heavy Wt. Pipe:	Length: 0.00 ft	Diameter: 0.00 inches	Volume: 0.00 bbl	Weight set on Packer: 25000.00 lb
Drill Collar:	Length: 181.00 ft	Diameter: 2.25 inches	Volume: 0.89 bbl	Weight to Pull Loose: 70000.00 lb
			<u>Total Volume: 56.72 bbl</u>	Tool Chased 0.00 ft
Drill Pipe Above KB:	30.00 ft			String Weight: Initial 55000.00 lb
Depth to Top Packer:	4154.00 ft			Final 55000.00 lb
Depth to Bottom Packer:	ft			
Interval between Packers:	80.00 ft			
Tool Length:	103.00 ft			
Number of Packers:	2	Diameter: 6.75 inches		

Tool Comments:

Tool Description	Length (ft)	Serial No.	Position	Depth (ft)	Accum. Lengths
Change Over Sub	1.00			4132.00	
Shut In Tool	5.00			4137.00	
Hydraulic tool	5.00			4142.00	
Safety Joint	3.00			4145.00	
Packer	5.00			4150.00	23.00 Bottom Of Top Packer
Packer	4.00			4154.00	
Stubb	1.00			4155.00	
Recorder	0.00	8322	Inside	4155.00	
Recorder	0.00	8166	Inside	4155.00	
Perforations	11.00			4166.00	
Change Over Sub	1.00			4167.00	
Drill Pipe	63.00			4230.00	
Change Over Sub	1.00			4231.00	
Bullnose	3.00			4234.00	80.00 Bottom Packers & Anchor

Total Tool Length: 103.00



**TRILOBITE
TESTING, INC**

DRILL STEM TEST REPORT

FLUID SUMMARY

Brito Oil Co., Inc.
1700 N Waterfront PKWY
Bld 300, Ste C
Wichita KS 67206
ATTN: Paul Gunzelman

Fairleigh A #1-19
19-15s-32w Logan KS
Job Ticket: 37894 **DST#: 1**
Test Start: 2010.06.08 @ 00:35:05

Mud and Cushion Information

Mud Type: Gel Chem	Cushion Type:	Oil API:	deg API
Mud Weight: 9.00 lb/gal	Cushion Length: ft	Water Salinity:	ppm
Viscosity: 60.00 sec/qt	Cushion Volume: bbl		
Water Loss: 7.19 in ³	Gas Cushion Type:		
Resistivity: 0.00 ohm.m	Gas Cushion Pressure: psig		
Salinity: 1800.00 ppm			
Filter Cake: 1.00 inches			

Recovery Information

Recovery Table

Length ft	Description	Volume bbl
1.00	Mw / O spots 100% m	0.005
0.00	GIP = 0	0.000

Total Length: 1.00 ft Total Volume: 0.005 bbl
 Num Fluid Samples: 0 Num Gas Bombs: 0 Serial #:
 Laboratory Name: Laboratory Location:
 Recovery Comments:

Pressure vs. Time

