



# DIAMOND TESTING

P. O. Box 157  
HOISINGTON, KANSAS 67544  
(316) 653-7550  
(d 33)

Company Trans Pacific Oil Corporation Lease & Well No. Davis "A" No. 1-32  
Elevation 2544 KB Formation Pawnee/Fort Scott Effective Pay -- Ft. Ticket No. 1520  
Date 10-1-00 Sec. 32 Twp. 15S Range 28W County Gove State Kansas  
Test Approved By Joe Baker Diamond Representative Roger D. Friedly

Formation Test No. 1 Interval Tested from 4,153 ft. to 4,268 ft. Total Depth 4,268 ft.  
Packer Depth 4,148 ft. Size 6 3/4 in. Packer Depth -- ft. Size -- in.  
Packer Depth 4,153 ft. Size 6 3/4 in. Packer Depth -- ft. Size -- in.  
Depth of Selective Zone Set          ft.

Top Recorder Depth (Inside) 4,141 ft. Recorder Number Elec. Cap. 5,000 psi  
Bottom Recorder Depth (Outside) 4,265 ft. Recorder Number 13556 Cap. 5,475 psi  
Below Straddle Recorder Depth          ft. Recorder Number          Cap.          psi

Drilling Contractor Shields Oil Producers, Inc. Drill Collar Length -- ft. I.D. -- in.  
Mud Type Chemical Viscosity 62 Weight Pipe Length 378 ft. I.D. 2 7/8 in.  
Weight 9.4 Water Loss 8.4 cc. Drill Pipe Length 3,750 ft. I.D. 3 1/2 in.  
Chlorides 2,000 P.P.M. Test Tool Length 25 ft. Tool Size 3 1/2 - IF in.  
Jars: Make Bowen Serial Number Not Run Anchor Length 52' perf. w/63' drillpipe Size 4 1/2 - FH in.  
Did Well Flow? No Reversed Out No Surface Choke Size 1 in. Bottom Choke Size 5/8 in.  
Tool Joint Size 4 1/2 FH in. DP  
Main Hole Size 7 7/8 in. Tool Joint Size 4 1/2 - XH in. WP

Blow: 1st Open: Week, 1/8 in., blow increasing to 1/4 in., then decreasing in 12 mins. Dead in 28 mins.  
2nd Open: No blow.

Recovered 10 ft. of drilling mud with a few oil specks in tool = .080300 bbls.  
Recovered          ft. of           
Recovered          ft. of           
Recovered          ft. of           
Recovered          ft. of           
Remarks         

Time Set Packer(s) 2:09 ~~A.M.~~ Time Started Off Bottom 4:09 ~~A.M.~~ Maximum Temperature 116°  
Initial Hydrostatic Pressure ..... (A) 1999 P.S.I.  
Initial Flow Period ..... Minutes 30 (B) 9 P.S.I. to (C) 14 P.S.I.  
Initial Closed In Period ..... Minutes 30 (D) 268 P.S.I.  
Final Flow Period ..... Minutes 30 (E) 14 P.S.I. to (F) 19 P.S.I.  
Final Closed In Period ..... Minutes 30 (G) 123 P.S.I.  
Final Hydrostatic Pressure ..... (H) 1984 P.S.I.



DIAMOND TESTING  
P. O. Box 157  
HOISINGTON, KANSAS 67544  
(800) 542-7313

FLUID SAMPLE DATA

Company Trans Pacific Oil Corporation  
Lease & Well No. Davis "A" No. 1-32  
Date 10-1-00 Sec. 32 Twp. 15 S Range 28 W  
Formation Test No. 1 Interval Tested From 4,153 ft. to 4,268 ft. Total Depth 4,268 ft.  
Formation Pawnee/Fort Scott

	MUD PIT	RECOVERY
Viscosity	<u>62</u> CP	<u>52</u> CP
Weight	<u>9.4</u>	<u>9.35</u>
Water Loss	<u>8.4</u> CC	<u>8.8</u> CC
PH Factor	<u>8.0</u>	<u>8.0</u>

	RESISTIVITY	CHLORIDE CONTENT
Recovery Water	<u>--</u> @ <u>--</u> °F.	<u>--</u> ppm
Recovery Mud	<u>1.10</u> @ <u>70</u> °F.	<u>5,800</u> ppm
Recovery Mud Filtrate	<u>1.20</u> @ <u>72</u> °F.	<u>4,800</u> ppm
Mud Pit Sample	<u>1.30</u> @ <u>62</u> °F.	<u>5,300</u> ppm
Mud Pit Sample Filtrate	<u>1.40</u> @ <u>64</u> °F.	<u>4,800</u> ppm

Sample Taken By ROGER D. FRIEDLY  
Witness By Joe Baker  
Remarks Pit filtrate triton dish chlorides were 2,000 Ppm.  
Recovery filtrate triton dish chlorides were 2,000 Ppm.

Memol

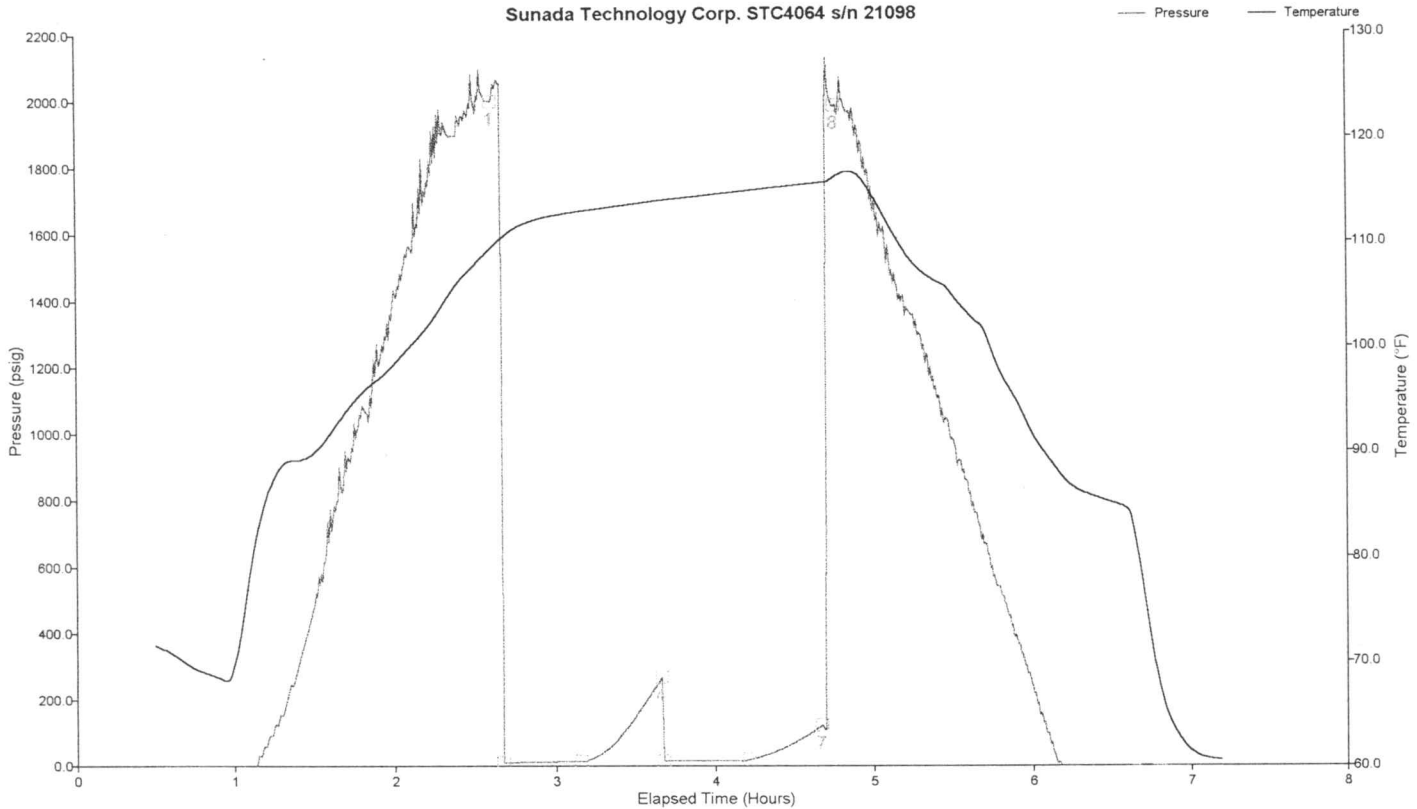
Well LSD: DST #1 PAWN./FT SCOTT 4153'-4268'

Well Name: DAVIS A 1-32

Company: TRANS PAC OIL CORP

Battery on: Sep 30, 2000 at 23:29:00

Notes:RECOVERED 10' DRILLING MUD WITH A FEW OIL SPECKS IN TOOL.

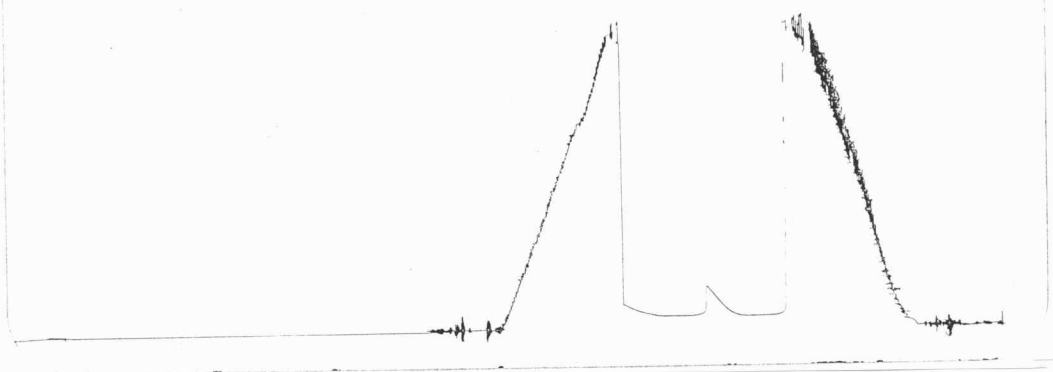


Memo2

Tag Pressure Temperature Comment

1	1998.64 psig	109.73 °F	2000-10-01 02:05:30
2	8.89 psig	110.62 °F	2000-10-01 02:09:30
3	14.04 psig	113.07 °F	2000-10-01 02:38:30
4	267.65 psig	114.11 °F	2000-10-01 03:09:00
5	14.32 psig	114.12 °F	2000-10-01 03:09:30
6	19.17 psig	115.03 °F	2000-10-01 03:42:00
7	123.29 psig	115.75 °F	2000-10-01 04:09:30
8	1984.28 psig	116.33 °F	2000-10-01 04:15:00

DST #1 Outside 1355h 4153-4268  
 Clock 6913 Pawnee/FT Scott 201 4265



This is an actual photograph of recorder chart.

POINT	PRESSURE		PSI
	Field Reading	Elec. Office Reading	
(A) Initial Hydrostatic Mud .....	1999	1999	PSI
(B) First Initial Flow Pressure.....	9	9	PSI
(C) First Final Flow Pressure .....	14	14	PSI
(D) Initial Closed-in Pressure .....	268	268	PSI
(E) Second Initial Flow Pressure .....	14	14	PSI
(F) Second Final Flow Pressure.....	19	19	PSI
(G) Final Closed-in Pressure.....	123	123	PSI
(H) Final Hydrostatic Mud .....	1984	1984	PSI