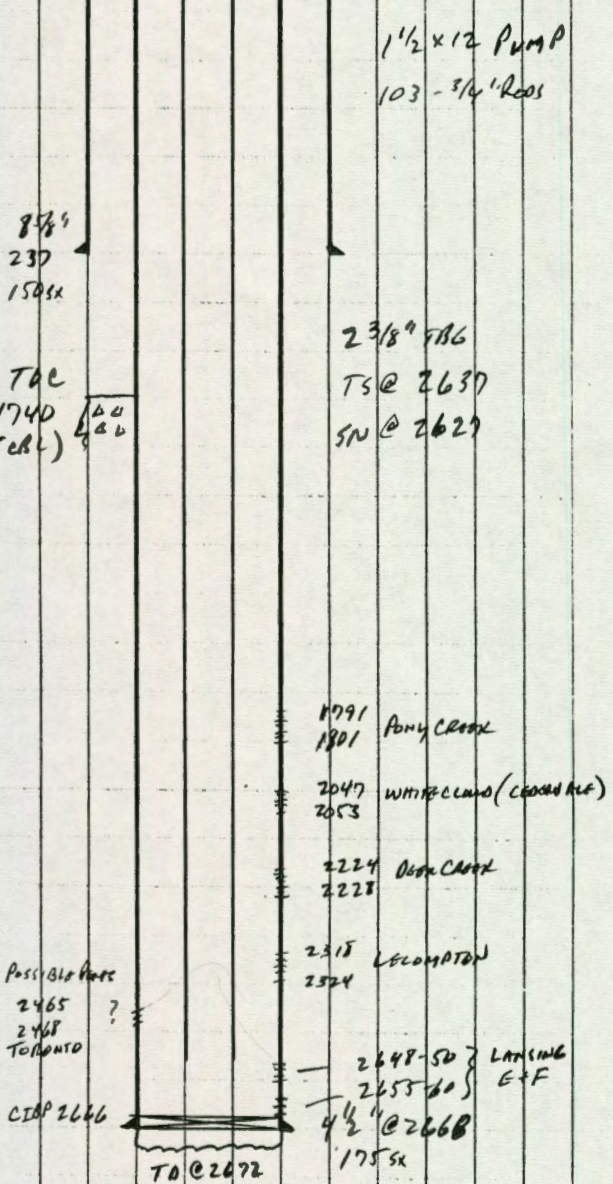


KR = 1621

WELL HISTORY

- 8-30-78 SRVD. 8 5/8" @ 237. TO 2672' NO OPEN HOLE LOGS.  
4 1/2" @ 2668' BY 1755X
- 9-19-78 DRILL OUT SIDEB AND CLEAN OUT 2666-72 OPEN HOLE.  
SHOT OPEN HOLE W/ FINE JOB CHARGE. NO SHOW.  
SET CIBP @ 2666'. PERM LANSING E+F 2648-50  
AND 2655-60'. PROD 750 GAL 28% CRA ACID.  
FLOW 3-4 MCFD.
- 9-14-80 SET CIBP @ 2625'. RUN CBL TO 1735'.  
PERM LECOMPTON 2318-24'. SPD GAL 28% ACID.  
SLIGHT SHOW. PERM REGT CROOK 2224-28'.  
PROD 2224-28 AND 2318-24 W/ 3000 GAL 28% ACID.  
IP 250 MCFD COMPINGLED.
- 7-84 RECORDS VERY POOR, BUT LOG INDICATES <sup>POSSIBLE</sup> PERMS @  
2465-68 (TORONTO), 2047-53 (WHITE CLOUD), AND  
1828-32, 1791-1801, 1791-93 (PONY CREEK).  
APPEARS PONY CREEK WAS FRACED. PRODUCED 22 MCFD.
- 8-2-86 PUT ON PUMP, TD @ 2001 (PONY CREEK ONLY)  
IP 45 MCFD. NR OF FLUID.
- 9-18-86 DRILL CIBP @ 2025', CIBP @ 2090' AND CIBP @ 2625'.  
ABTD 2625'. RUN TBL TO 2637' AND PUT ON  
PUMP. TEST 2-3 BOPDT + 20-30 BWAD + 30-40 MCFD.  
HAVING TO HALL WTR.
- 7-31-91 PUMPING OBOARD + 9 BWAD + 12 MCFD.
- 8-31-91 UNIT DOWN - NOT ENOUGH GAS TO RUN ENGINE.  
SUSPECT PUMP IS WORN OUT AND WOULD PROBABLY  
PUMP 20-40 BWAD IF CHARGED PUMP.



Possible Perms  
2465 ?  
2468  
TORONTO

CIBP 2666  
TD @ 2672

1 1/2 x 12 PUMP  
103 - 3/4" ROOS

2 3/8" FIBG  
TS @ 2637  
SN @ 2629

1791  
1801 PONY CREEK  
2047  
2053 WHITE CLOUD (CROOK) (CROOK) (CROOK)  
2224  
2228 CROOK  
2318  
2324 LECOMPTON  
2648-50 ? LANSING  
2655-60 E+F  
4 1/2" @ 2668  
1755X

ORIGINAL FILE NOTES  
COMMANCHÉ.

ALDEN #2

4 1/2" CSW SET - 2668'

PBTD - B.P. @ 2666', B.P. - 2625'

LANS - OPEN HOLE - 2666' - 68' - ALSO PERFORATED

LANS - Perfs - 2648-50 + 2655-60 -

ACID - 750 gals - 2 BPM - 150

Initial Prod. - 3-4 MMCFPD

PERFS 2318-24 - LCCOMPTON + ORIAN TOPEKA

ACID - 500 gals - 4 BPM - 250 psi.

Perfs - 2224' - 28' DEER CREEK LIME

ACID - 3000 gals - 5 1/2 BPM - 1200 psi.

NOTES - FOUND T.O. BY TOG TALLY @ 2001'  
EITHER JUNK IN HOLE OR ANOTHER  
B.P. SET @ - 2001'. WHICH MEANS  
THERE ARE MORE PERFS THAN RECORDED  
IN FILES) NEED TO KNOCK OUT PLUGS.  
PERFS POSSIBLY TARKIO SAND.

ALDEN #2

KNOCK OUT PLUGS.

9/18/86

SPECIFICS:

RTD - 2672'

SURFACE CASING - 237'

4 1/2" CASING - SET @ 2666' WITH 175 SKS.

BRIDGE PLUGS - 2090', 2025', 2625', 2666'.

PERFS - 1791-93' - PONY CREEK

1798'-1801' - PONY CREEK.

2047'-53' - CEDARVALE

2224'-28' - DEER CREEK LIME

2318'-24' - LECOMPTON

2648'-50' - K.C.

2655'-60' - K.C.

OPEN HOLE - 2666'; 72' (ALSO PERFERATED)

TREATMENTS -

9/27/78 - 2648-50 + 2655-60 - 750 gals ACID - 3-4 MMCFPD

4/22/80 - " - " + " - " 1000 gals 15% ACID

9/14/80 - 2318'-24' - 500 gals ACID-

9/15/80 - 2318'-24' + 2224'-28' - 3000 gal 28% + Sealers - 250 MCFPD

7/12/84 - 2047'-53' - 750 gals 15% ACID.

7/16/84 - 1791-93' + 1798-1801' - 100 gals ACID + FRAC N<sup>2</sup> FOAM

NOTES (POSSIBLE LANS-K.C - C ZONE PERFS. 2601'-04' +  
2606'-12') - (POSSIBLE PERFS - 2465'-68'?)

POSSIBLE REWORK - DOUGLAS SAND?

9/18/86

DS + W WELL SERVICE ON LOCATION WITH O-D  
DERRICK. Riggcd up to PULL RODS + TAG.

ALDEN #2

9/18/86 cont.

PULLED: P.R., 78- $\frac{3}{4}$ " RODS, 2' SUB, 2" x  $1\frac{1}{2}$ " x 12' RWTC.

Rigged TO PULL TUBING.

PULLED: 65 JTS  $2\frac{3}{4}$ " TBG, S.N., + M.A.

OTIS ON LOCATION WITH SAND-LINE DRILL.

RIGGED UP DRILL TO DRILL OUT PLUG @ 2025'.

NOTE: (FOUND BOTTOM @ 2001'. FIRST RUN CAME OUT WITH FRAC SAND. HAVE - 24' FRAC SAND ON PLUG)

DS+W BROUGHT OUT SAND PUMP, RIGGED DOWN DRILL + RIGGED UP SAND PUMP.

REMOVED 24' SAND OFF TOP PLUG @ 2025'.

RIGGED BACK UP OTIS SAND LINE DRILL.

DRILLED: - PLUG @ 2025'.

PUSHED REMAINDER OF PLUG 65' TO PLUG @ 2090'.

STARTED DRILLING ON PLUG @ 2090'.

SHUT DOWN FOR NIGHT.

9/19/86

CONTINUED DRILLING @ 2090'. SHUT DOWN DUE TO SAND-LINE DRILL PROBLEMS. SHUT DOWN FOR WEEKEND.

9/22/86

OTIS ON LOCATION WITH SAND-LINE DRILL.

DS+W RIGGED BACK UP TO DRILL OUT BRIDGE PLUGS.

DRILLED: PLUG @ 2090'. PUSHED REMAINDER 535' DOWN TO PLUG @ 2625'. DRILLED UP PLUG @ 2625' FELL TO PBTD @ 2666'.

RIGGED DOWN SAND-LINE DRILL.

SHUT DOWN FOR NIGHT.

9/23/86

DS+W RIGGED TO RUN TUBING. DELIVERED EXTRA TUBING + RODS NEEDED TO COMPLETE STRING FROM HUSEMAN #1 WELL.

RAN TUBING AS FOLLOWS:

MUD ANCHOR . . . . .	9.85'
SEATING NIPPLE . . . . .	1.10'
85 JTS 2 <sup>3</sup> / <sub>8</sub> " TBG . . . . .	2621.02'
K.B . . . . .	<u>5.00'</u>
TUBING SET G . . . . .	2636.97'
S.N. SET G . . . . .	2627.12'

TAGGED PBTD @ 2666'. PICKED UP + SET TUBING 29' OFF BOTTOM. PACKED TUBING OFF. INSTALLED WELL HEAD CONNECTIONS. RIGGED TO RUN RODS.

RAN PUMP + RODS AS FOLLOWS:

2" x 1 <sup>1</sup> / <sub>2</sub> " x 12' RWB PUMP (6' GA),	14.00'
103- 3/4" RODS . . . . .	2575.00'
6'-4'-2'-2'+2' x 3/4" SUBS . . . . .	16.00'
1 <sup>1</sup> / <sub>4</sub> " x 16' POLISHED ROD . . . . .	<u>16.00'</u>
PUMP SET G . . . . .	2627.12'

SPACED PUMP 6" OFF BOTTOM. HUNG WELL ON.

DS+W RIGGED DOWN + MOVED OFF LOCATION.

PUT WELL IN SERVICE.

ALDEN #2

PULL TBG. RUN PUMP + RODS.

SPECIFICS:

PBTD - 2666' + B.P. @ 2625'

4 1/2 CSN Set @ - 2668'

LANS. F PERFS - 2648'-50', 2655'-60'. 750 gals + 1000 gals ACID.

TOPEKA PERFS - 2318'-24' - (LECOMPTON + ORIND. IN TOPEKA.)

NOTE - (500 gals ACID.)

DEER CREEK LIME PERFS - 2224'-28' (3000 gals ACID.)

NOTE: (NEED TO KNOCK OUT B.P. @ 2625' + CO-MINGLE.  
FOR ADDITIONAL 80 MCFPD.)

8/2/86

GREAT BEND CASING PULLERS RIGGED UP D-D POLE UNIT.  
WAGNER TRUCKING BROUGHT OUT USED RODS, PUMP. +  
MISC. OUT OF OPIK STOCK.

RAN: PUMP + APPROX 1000' - USED 3/4" RODS.

FOUND TIGHT SPOT IN TUBING.

NOTE: HAVING TO SPEND ALOT OF TIME PREPARING  
USED RODS TO RUN.

8/3/86

PULLED: 1000' RODS + PUMP.

PULLED: 2 3/8" TUBING. (FOUND BAD JT)

8/4/86.

RAN TUBING AS FOLLOWS:

MUD ANCHOR . . . . .	9.85'
SEATING NIPPLE . . . . .	1.10'
65 JTS. 2 3/8" TBG . . . . .	<u>1984.54'</u>
TBG SET @ . . . . .	1995.49'

TAGGED BOTTOM @ 2001' (BY TALLY). PICKED UP  
+ SET TBG. 6' OFF BOTTOM.

8/4/86 cont.

RIGGED UP TO RUN PUMP + RODS.

RAN RODS AS FOLLOWS:

2" X 1 1/2" X 12' RWTC (6' G.A.)	14.00'
2' X 3/4" ROD SUB	2.00'
78- 3/4" USED RODS	1450.00'
1 1/4" X 16' P.R.	<u>16.00'</u>
PUMP SET G	1485.64'

SPACED PUMP OUT, CLAMPED RODS OFF.

GREAT BEND CASING PULLERS RIGGED DOWN +  
MOVED OFF LOCATION.

8/5/86

BLUE SOK ROUSTABOUTS ON LOCATION. BUILT  
PUMPING UNIT PAD. HOOKED UP WELL HEAD.  
SET CMI-57 PUMPING UNIT SERIAL# -  
+ F+M-208 ENGINE.  
PUT WELL IN SERVICE PUMPING.

8/6/86

WELL MAKING 45 MCFPD.

ALDEN #2

8-31-91 - RECORDS VERY POOR ON THIS WELL. LOT OF ZONE SHORT(?). SEE ATTACHED WELLBORE DIAGRAM. WELL CURRENTLY LOADED UP WITH NO GAS TO RUN ENGINE. WILL MAKE 0 BOPD @ 8-10 BWP @ 12-15 MCFD IF PUT BACK TO PUMPING. SUSPECT PUMP IS BIA (IN HOLE SINCE 9-86) AND WOULD MAKE 20-40 BWP @ 30-40 MCFD IF PUMP WERE CHANGED. THIS ALSO WOULD BE UNECONOMIC. SUSPECT WATER IS FROM DEEP CAGE 2224'. AS LAST RESORT BEFORE PIA, SHOULD RUN PIA AND TEST LANSING EFF ZONES. SHOULD INCREASE TO 80 MCFD IF NOT FLOODED BY WATER FROM WELLBORE.

RECOMMENDED PROCEDURES.

- 1) START ON PUMPING FOR FEW DAYS AND TEST.
- 2) IF UNECONOMIC, RUN TBG & HOOS. RUN PUMP TO 2550, SET PUMP AND SUB TEST LANSING EFF.
- 3) IF THIS IS UNECONOMIC, MOST LIKELY WATER TO PIA. NOTE: IF PIA, WILL HAVE EXTRA TBG & HOOS.

BJS/and

8-31-91.

WELL COMPLETION SKETCH (EN-5036-4-A)

WELL: ALDEN #2      FIELD: SESESE 30-15s-8w      DATE:

PRESENT COMPLETION       SUGGESTED COMPLETION

PERMANENT WELL BORE DATA

DATA ON THIS COMPLETION

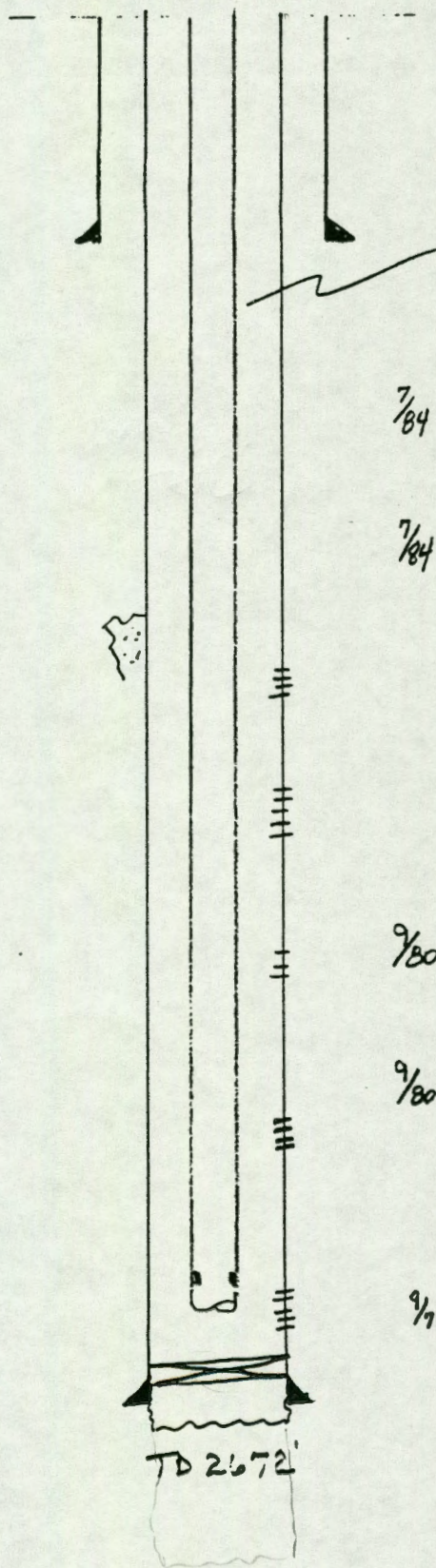
SPUD 8-30-78

8<sup>5</sup>/<sub>8</sub> @ 230' w/ 150 sx

TOC 1740' CBL

9/86 Tested ALL ZONES WITH WELL ON PUMP  
2-3 BOPD, 20-30 BWPD  
12 MCF - SI WELL

4<sup>1</sup>/<sub>2</sub> @ 2668' w/ 175 sx



2<sup>3</sup>/<sub>8</sub> @ 2637'  
SN @ 2627'

7/84 PONY CREEK 1791-93  
1798-1801, 1828-32  
FRAC IP 45 MCF/D

7/84 White CLOUD 2047-53

9/80 DEER CREEK: 2224-28

9/80 LECOMPTON: 2318-24  
ADDZ DEER CRK & LECOMPT  
TOGETHER W/ 3000 G  
IP 250 MCF/D

9/80 LANSING 'E & F'  
2648-50  
2655-60  
IP 3 MMCF/D

CIBP @ 2666