

# FORMATION TEST REPORT



Home Office:

Wichita, Kansas 67201

P. O. Box 1599

Phone (316) 838-0601

COMPANY ILUS INDUSTRIES, INC.

LEASE AND WELL NO. \_\_\_\_\_

ALDEN #2

SEC. 30

TWP. 15S

RGF. \_\_\_\_\_

8M TEST NO. \_\_\_\_\_

1 DATE \_\_\_\_\_



"C" *g*

Home Office: Wichita, Kansas 67201  
P. O. Box 1599 (316) 838-0601

Company Ilus Industries, Inc. Lease & Well No. Alden #2  
Elevation 1621 Kelly Bushing Formation Lansing C Effective Pay ----- Ft. Ticket No. 1378  
Date 9/3/78 Sec. 30 Twp. 15S Range 8W County Ellsworth State Kansas  
Test Approved by Chris Dilts Western Representative Ricky L. Bowman

Formation Test No. 1 Interval Tested from 2591' ft. to 2617' ft. Total Depth 2617' ft.  
Packer Depth 2586 ft. Size 6 3/4 in. Packer Depth -- ft. Size -- in.  
Packer Depth 2591 ft. Size 6 3/4 in. Packer Depth -- ft. Size -- in.  
Depth of Selective Zone Set --

Top Recorder Depth (Inside) 2607 ft. Recorder Number 3660 Cap 4000  
Bottom Recorder Depth (Outside) 2610 ft. Recorder Number 1560 Cap 3150  
Below Straddle Recorder Depth - ft. Recorder Number - Cap -

Drilling Contractor Emphasis Oil Op. #4 Drill Collar Length 573 I. D. - in.  
Mud Type starch Viscosity 45 Weight Pipe Length -- I. D. - in.  
Weight 9.9 Water Loss 6.4 cc. Drill Pipe Length 1993 I. D. 3.0 in.  
Chlorides 67,000 P.P.M. Test Tool Size 4 1/2 in. Tool Joint Size 4 1/2 FH in.  
Jars: Make -- Serial Number -- Anchor Length 26 ft. Size 4 1/2 in.  
Did Well Flow? -- Reversed Out -- Surface Choke Size 3/4 in. Bottom Choke Size 3/4 in.  
Main Hole Size 7 7/8 in. Test tool length 25'

Blow: Initial flow period strong blow: Final flow period strong blow: gas to surface in twelve minutes. Too weak to be gauged.

Recovered 200 ft. of drilling mud, gassy  
Recovered      ft. of       
Recovered      ft. of       
Recovered      ft. of       
Recovered      ft. of     

Remarks: Slid 12' to bottom.

Time Set Packer(s) 9:10 ~~A.M.~~ P.M. Time Started Off Bottom 12:10 ~~P.M.~~ A.M. Maximum Temperature 105  
Initial Hydrostatic Pressure 1424 (A) 1424 P.S.I.  
Initial Flow Period 30 (B) 81 P.S.I. to (C) 111 P.S.I.  
Initial Closed In Period 45 (D) 635 P.S.I.  
Final Flow Period 45 (E) 111 P.S.I. to (F) 117 P.S.I.  
Final Closed In Period 60 (G) 583 P.S.I.  
Final Hydrostatic Pressure 1396 (H) 1396 P.S.I.

WESTERN TESTING CO., INC.

Pressure Data

Date 9/3/78

Test Ticket No. 1378

Recorder No. 3660

Capacity 4000

Location 2607 Ft.

Clock No. --

Elevation 1621 Kelly Bushing

Well Temperature 105 °F

Point	Pressure		Time Given	Time Computed
A Initial Hydrostatic Mud	1424	P.S.I.	9:10P	M
B First Initial Flow Pressure	81	P.S.I.	30	Mins. 30 Mins.
C First Final Flow Pressure	111	P.S.I.	45	Mins. 48 Mins.
D Initial Closed-in Pressure	635	P.S.I.	45	Mins. 45 Mins.
E Second Initial Flow Pressure	111	P.S.I.	60	Mins. 60 Mins.
F Second Final Flow Pressure	117	P.S.I.		
G Final Closed-in Pressure	583	P.S.I.		
H Final Hydrostatic Mud	1396	P.S.I.		

PRESSURE BREAKDOWN

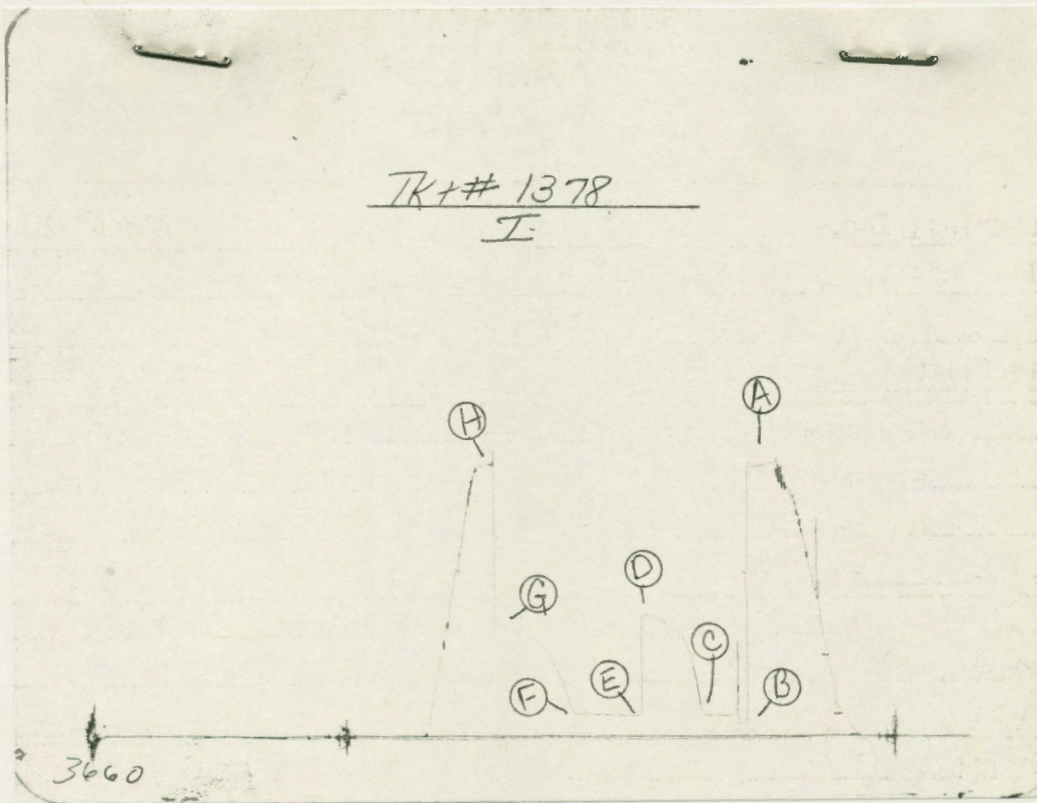
First Flow Pressure  
Breakdown: 6 Inc.  
of 5 mins. and a  
final inc. of 0 Min.

Initial Shut-In  
Breakdown: 16 Inc.  
of 3 mins. and a  
final inc. of 0 Min.

Second Flow Pressure  
Breakdown: 9 Inc.  
of 5 mins. and a  
final inc. of 0 Min.

Final Shut-In  
Breakdown: 20 Inc.  
of 3 mins. and a  
final inc. of 0 Min.

Point Mins.	Press.	Point Minutes	Press.	Point Minutes	Press.	Point Minutes	Press.
P 1 0	81	0	111	0	111	0	117
P 2 5	67	3	144	5	106	3	117
P 3 10	111	6	237	10	108	6	145
P 4 15	106	9	334	15	111	9	197
P 5 20	110	12	421	20	112	12	256
P 6 25	111	15	476	25	113	15	311
P 7 30	111	18	518	30	114	18	359
P 8		21	542	35	115	21	400
P 9		24	560	40	116	24	429
P10		27	576	45	117	27	457
P11		30	589			30	478
P12		33	601			33	497
P13		36	610			36	514
P14		39	619			39	527
P15		42	626			42	538
P16		45	632			45	548
P17		48	635			48	558
P18						51	565
P19						54	572
P20						57	577
						60	583



This is an actual photograph of recorder chart.

POINT	PRESSURE		PSI
	Field Reading	Office Reading	
(A) Initial Hydrostatic Mud .....	1383	1424	PSI
(B) First Initial Flow Pressure .....	101	81	PSI
(C) First Final Flow Pressure .....	111	111	PSI
(D) Initial Closed-in Pressure .....	625	635	PSI
(E) Second Initial Flow Pressure .....	101	111	PSI
(F) Second Final Flow Pressure .....	111	117	PSI
(G) Final Closed-in Pressure .....	575	583	PSI
(H) Final Hydrostatic Mud .....	1326	1396	PSI

# FORMATION TEST REPORT

COMPANY ILUS INDUSTRIES, INC. LEASE AND WELL NO. ALDEN #2 SEC 30 TWP 15S RGE 8W TEST NO. 2 DATE 5



Home Office:

Wichita, Kansas 67201

P. O. Box 1599

Phone (316) 838-0601



Home Office: Wichita, Kansas 67201  
P. O. Box 1599 (316) 838-0601

Company Ilus Industries, Inc. Lease & Well No. Alden #2  
Elevation 1621 Kelly Bushing Formation Lansing Effective Pay ----- Ft. Ticket No. 1379  
Date 9/4/78 Sec. 30 Twp. 15S Range 8W County Ellsworth State Kansas  
Test Approved by Chris Dilts Western Representative Ricky L. Bowman

Formation Test No. 2 Interval Tested from 2646' ft. to 2672' ft. Total Depth 2672' ft.  
Packer Depth 2641 ft. Size 6 3/4 in. Packer Depth -- ft. Size -- in.  
Packer Depth 2646 ft. Size 6 3/4 in. Packer Depth -- ft. Size -- in.  
Depth of Selective Zone Set --

Top Recorder Depth (Inside) 2662 ft. Recorder Number 3660 Cap. 4000  
Bottom Recorder Depth (Outside) 2665 ft. Recorder Number 1560 Cap. 3150  
Below Straddle Recorder Depth -- ft. Recorder Number -- Cap. --

Drilling Contractor Emphasis Drilling Co. Drill Collar Length 573 I. D. 2 1/4 in.  
Mud Type starch Viscosity 40 Weight Pipe Length - I. D. - in.  
Weight 9.9 Water Loss 6.8 cc. Drill Pipe Length 2048 I. D. 3.8 in.  
Chlorides 68,000 P.P.M. Test Tool Size 25 in. Tool Joint Size 5 1/2 in.  
Jars: Make -- Serial Number -- Anchor Length 26 ft. Size 5 1/2 in.  
Did Well Flow? Yes Reversed Out No Surface Choke Size 3/4 in. Bottom Choke Size 3/4 in.  
Main Hole Size 7 7/8 in.

Blow: Initial flow period very strong; gas to surface in three minutes.

Recovered 183 ft. of gassy drilling mud  
Recovered 122 ft. of gassy, watery mud 10% water  
Recovered 305 ft. of Total recovery

Recovered \_\_\_\_\_ ft. of \_\_\_\_\_  
Recovered \_\_\_\_\_ ft. of \_\_\_\_\_  
Remarks: Slid 6' to bottom.

Time Set	Packer(s)	Time Started Off Bottom	Maximum Temperature
	<u>3:25</u>	<u>6:25</u>	<u>110</u>
Initial Hydrostatic Pressure	(A) <u>1422</u>	P.S.I.	
Initial Flow Period	Minutes <u>30</u>	(B) <u>233</u>	P.S.I. to (C) <u>207</u> P.S.I.
Initial Closed In Period	Minutes <u>60</u>	(D) <u>923</u>	P.S.I.
Final Flow Period	Minutes <u>30</u>	(E) <u>249</u>	P.S.I. to (F) <u>223</u> P.S.I.
Final Closed In Period	Minutes <u>60</u>	(G) <u>918</u>	P.S.I.
Final Hydrostatic Pressure	(H) <u>1408</u>	P.S.I.	



Home Office: Wichita, Kansas 67201  
P. O. Box 1599 (316) 838-0601

### GAS FLOW REPORT

Date 9/4/78 Ticket 1379 Company Ilus Industries, Inc.  
Well Name and No. Alden #2 Dst No. 2 Interval Tested 2646' - 2672'  
County Ellsworth State Kansas Sec. 30 Twp. 15S Rg. 8W

Time Gauge Pre-Flow	Time Gauge in Min.	P.S.I. on Merla Orifice Well Tester	P.S.I. on Pitot Tester	P.S.I. on Side Static Tester	P.S.I. on U-Tube Tester	Description of Flow
---------------------	--------------------	-------------------------------------	------------------------	------------------------------	-------------------------	---------------------

#### PRE FLOW

3:35	10 min.	44 PSIG	1" orifice			1,247,000 CFPD
3:45	20 min.	21 PSIG	1" orifice			749,000 CFPD
3:55	30 min.	21 PSIG	1" orifice			749,000 CFPD

#### SECOND FLOW

5:05	10 min.	21 PSIG	1" orifice			749,000 CFPD
5:15	20 min.	21 PSIG	1" orifice			749,000 CFPD
5:25	30 min.	21 PSIG	1" orifice			749,000 CFPD

#### GAS BOTTLE

Serial No. WTC #41 Date Bottle Filled 9/4/78 Date to be Invoiced 9/4/78

Requisition and Provisions for high pressure stainless steel gas bottles. Western Testing Co., Inc. shall not be liable for damage of any kind to property or personnel of the one whom gas bottle is filled or for any loss suffered or sustained directly or indirectly through the use of these bottles. By signing of this ticket showing receipt of a gas testing bottle, the undersigned agrees for himself and as agent for operator, to return this bottle to Western Testing Co., Inc. within thirty (30) days free of charge, or be invoiced in the amount of \$75.00 (total charge). Should valve or seal plug be missing or damaged beyond repair, operator shall be invoiced for repairs at our invoiced price.

All charges subject to 1% per month, equal to 12% interest per annum after 30 days from date of invoice. Any expense incurred for collection will be added to the original amount.

COMPANY'S NAME Ilus Industries, Inc.

Authorized by Chris Dilts

**WESTERN TESTING CO., INC.**  
**Pressure Data**

Date 9/4/78

Test Ticket No. 1379

Recorder No. 3660

Capacity 4000

Location 2662 Ft.

Clock No. -- Elevation

1621 Kelly Bushing

Well Temperature 110 °F

Point	Pressure		Time Given	Time Computed
A Initial Hydrostatic Mud	<u>1422</u> P.S.I.	Open Tool	<u>3:25P</u>	<u>M</u>
B First Initial Flow Pressure	<u>233</u> P.S.I.	First Flow Pressure	<u>30</u> Mins.	<u>30</u> Mins.
C First Final Flow Pressure	<u>207</u> P.S.I.	Initial Closed-in Pressure	<u>60</u> Mins.	<u>60</u> Mins.
D Initial Closed-in Pressure	<u>923</u> P.S.I.	Second Flow Pressure	<u>30</u> Mins.	<u>30</u> Mins.
E Second Initial Flow Pressure	<u>249</u> P.S.I.	Final Closed-in Pressure	<u>60</u> Mins.	<u>69</u> Mins.
F Second Final Flow Pressure	<u>223</u> P.S.I.			
G Final Closed-in Pressure	<u>918</u> P.S.I.			
H Final Hydrostatic Mud	<u>1408</u> P.S.I.			

**PRESSURE BREAKDOWN**

First Flow Pressure  
Breakdown: 5 Inc.  
of 5 mins. and a  
final inc. of 0 Min.

Initial Shut-In  
Breakdown: 20 Inc.  
of 3 mins. and a  
final inc. of 0 Min.

Second Flow Pressure  
Breakdown: 6 Inc.  
of 5 mins. and a  
final inc. of 0 Min.

Final Shut-In  
Breakdown: 23 Inc.  
of 3 mins. and a  
final inc. of 0 Min.

Point Mins.	Press.	Point Minutes	Press.	Point Minutes	Press.	Point Minutes	Press.
P 1 <u>0</u>	<u>233</u>	<u>0</u>	<u>207</u>	<u>0</u>	<u>249</u>	<u>0</u>	<u>223</u>
P 2 <u>5</u>	<u>233</u>	<u>3</u>	<u>700</u>	<u>5</u>	<u>223</u>	<u>3</u>	<u>447</u>
P 3 <u>10</u>	<u>243</u>	<u>6</u>	<u>854</u>	<u>10</u>	<u>223</u>	<u>6</u>	<u>802</u>
P 4 <u>15</u>	<u>216</u>	<u>9</u>	<u>888</u>	<u>15</u>	<u>223</u>	<u>9</u>	<u>861</u>
P 5 <u>20</u>	<u>207</u>	<u>12</u>	<u>901</u>	<u>20</u>	<u>223</u>	<u>12</u>	<u>884</u>
P 6 <u>25</u>	<u>207</u>	<u>15</u>	<u>905</u>	<u>25</u>	<u>223</u>	<u>15</u>	<u>893</u>
P 7		<u>18</u>	<u>909</u>	<u>30</u>	<u>223</u>	<u>18</u>	<u>899</u>
P 8		<u>21</u>	<u>912</u>			<u>21</u>	<u>902</u>
P 9		<u>24</u>	<u>915</u>			<u>24</u>	<u>905</u>
P10		<u>27</u>	<u>915</u>			<u>27</u>	<u>907</u>
P11		<u>30</u>	<u>917</u>			<u>30</u>	<u>909</u>
P12		<u>33</u>	<u>917</u>			<u>33</u>	<u>911</u>
P13		<u>36</u>	<u>918</u>			<u>36</u>	<u>912</u>
P14		<u>39</u>	<u>919</u>			<u>39</u>	<u>913</u>
P15		<u>42</u>	<u>920</u>			<u>42</u>	<u>914</u>
P16		<u>45</u>	<u>921</u>			<u>45</u>	<u>914</u>
P17		<u>48</u>	<u>922</u>			<u>48</u>	<u>915</u>
P18		<u>51</u>	<u>922</u>			<u>51</u>	<u>915</u>
P19		<u>54</u>	<u>923</u>			<u>54</u>	<u>916</u>
P20		<u>57</u>	<u>923</u>			<u>57</u>	<u>916</u>
WTC - 4		<u>60</u>	<u>923</u>			<u>60</u>	<u>917</u>

WESTERN TESTING CO., INC.

Pressure Data

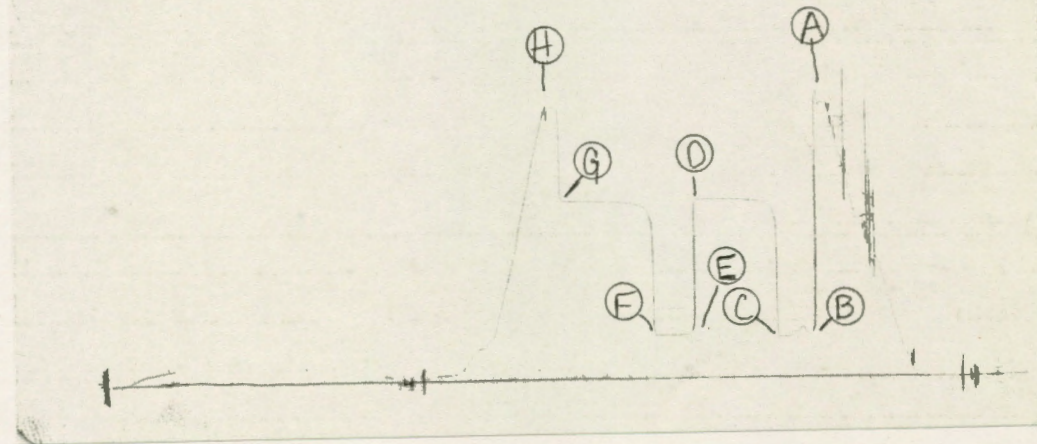
Date 9/4/78 Test Ticket No. 1379  
 Recorder No. 3660 Capacity 4000 Location 2662 Ft.  
 Clock No. -- Elevation 1621 Kelly Bushing Well Temperature 110 °F

Point	Pressure		Time Given	Time Computed
A Initial Hydrostatic Mud	1422	P.S.I.	3:25P	M
B First Initial Flow Pressure	233	P.S.I.	30	Mins. 30 Mins.
C First Final Flow Pressure	207	P.S.I.	60	Mins. 60 Mins.
D Initial Closed-in Pressure	923	P.S.I.	30	Mins. 30 Mins.
E Second Initial Flow Pressure	249	P.S.I.	60	Mins. 69 Mins.
F Second Final Flow Pressure	223	P.S.I.		
G Final Closed-in Pressure	918	P.S.I.		
H Final Hydrostatic Mud	1408	P.S.I.		

PRESSURE BREAKDOWN

Point Mins.	First Flow Pressure	Initial Shut-In	Second Flow Pressure	Final Shut-In	
	Breakdown: <u>5</u> Inc. of <u>5</u> mins. and a final inc. of <u>0</u> Min.	Breakdown: <u>20</u> Inc. of <u>3</u> mins. and a final inc. of <u>0</u> Min.	Breakdown: <u>6</u> Inc. of <u>5</u> mins. and a final inc. of <u>0</u> Min.	Breakdown: <u>23</u> Inc. of <u>3</u> mins. and a final inc. of <u>0</u> Min.	
	Press.	Point Minutes	Press.	Point Minutes	Press.
P 1				63	917
P 2				66	918
P 3				69	918
P 4					
P 5					
P 6					
P 7					
P 8					
P 9					
P 10					
P 11					
P 12					
P 13					
P 14					
P 15					
P 16					
P 17					
P 18					
P 19					
P 20					

TK# 1379  
I



This is an actual photograph of recorder chart.

POINT	PRESSURE		PSI
	Field Reading	Office Reading	
(A) Initial Hydrostatic Mud .....	1473	1422	PSI
(B) First Initial Flow Pressure .....	222	233	PSI
(C) First Final Flow Pressure .....	202	207	PSI
(D) Initial Closed-in Pressure .....	922	923	PSI
(E) Second Initial Flow Pressure .....	222	249	PSI
(F) Second Final Flow Pressure .....	232	223	PSI
(G) Final Closed-in Pressure .....	912	918	PSI
(H) Final Hydrostatic Mud .....	1420	1408	PSI



Home Office: Wichita, Kansas 67201  
P. O. Box 1599 (316) 838-0601

Company Ilus Industries, Inc. Lease & Well No. Alden #2  
Elevation 1621 Kelly Bushing Formation Douglas Effective Pay ----- Ft. Ticket No. 1380  
Date 9/5/78 Sec. 30 Twp. 15S Range 8W County Ellsworth State Kansas  
Test Approved by Chris Dilts Western Representative Ricky L. Bowman

Formation Test No. 3 Interval Tested from 2471' ft. to 2504' ft. Total Depth 2672' ft.  
Packer Depth 2471' ft. Size 6 3/4 in. Packer Depth 2509 ft. Size 6 3/4 in.  
Packer Depth 2504 ft. Size 6 3/4 in. Packer Depth -- ft. Size -- in.  
Depth of Selective Zone Set --

Top Recorder Depth (Inside) 2493 ft. Recorder Number -- Cap --  
Bottom Recorder Depth (Outside) 2670 ft. Recorder Number -- Cap --  
Below Straddle Recorder Depth ----- ft. Recorder Number ----- Cap -----

Drilling Contractor Emphasis Drilling #4 Drill Collar Length 532 I. D. 3.8 in.  
Mud Type starch Viscosity 40 Weight Pipe Length -- I. D. -- in.  
Weight 9.9 Water Loss 6.8 cc. Drill Pipe Length 2099 I. D. 3.0 in.  
Chlorides 68,000 P.P.M. Test Tool Size 4 1/2 in. Tool Joint Size 4 1/2 FH in.  
Jars: Make WTC Serial Number 410 Anchor Length 163 ft. Size 4 in.  
Did Well Flow? ----- Reversed Out ----- Surface Choke Size 3/4 in. Bottom Choke Size 3/4 in.  
Main Hole Size 7 7/8 in.

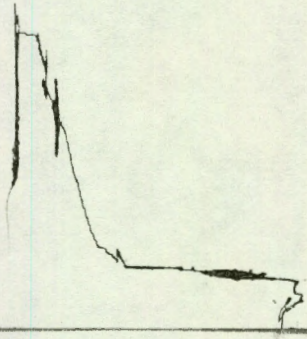
Blow: Initial flow period strong. Final flow period strong.

Recovered 70 ft. of drilling mud  
Recovered 240 ft. of watery mud  
Recovered 310 ft. of Total Recovery  
Recovered ----- ft. of -----  
Recovered ----- ft. of ----- MISRUN NO CHARGE

Remarks: -----

Time Set Packer(s) 3:15 A.M. Time Started Off Bottom 5:45 A.M. Maximum Temperature -----  
Initial Hydrostatic Pressure ----- (A) ----- P.S.I.  
Initial Flow Period ----- Minutes (B) ----- P.S.I. to (C) ----- P.S.I.  
Initial Closed In Period ----- Minutes (D) ----- P.S.I.  
Final Flow Period ----- Minutes (E) ----- P.S.I. to (F) ----- P.S.I.  
Final Closed In Period ----- Minutes (G) ----- P.S.I.  
Final Hydrostatic Pressure ----- (H) ----- P.S.I.

TK# 1380



TK# 1380

