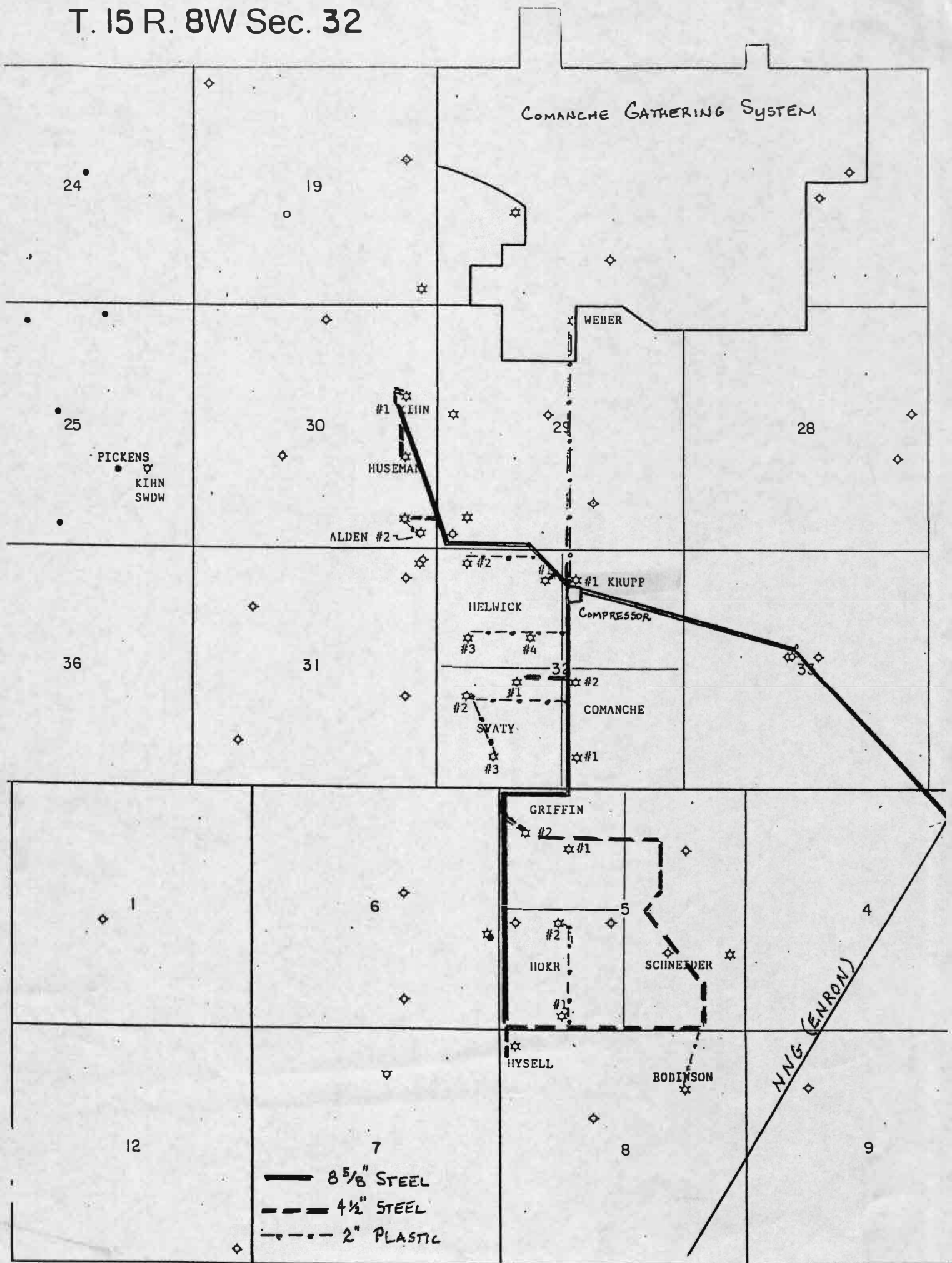
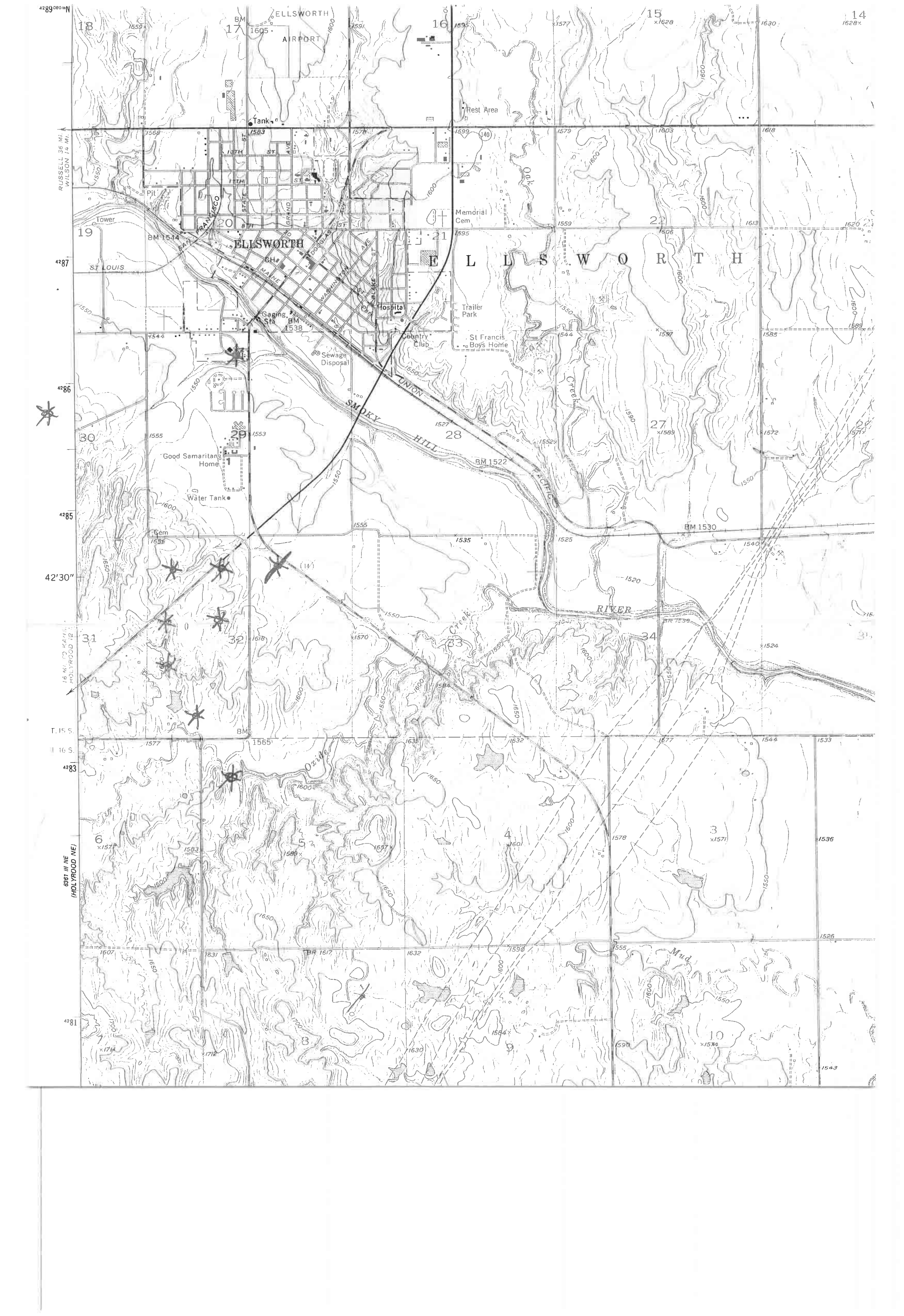


T. 15 R. 8W Sec. 32





RUSSELL 36 MI.
WILSON 14 MI.

42°37'

42°36'

42°35'

42°30'

T. 15 S.

16 S.

42°33'

42°31'

6881 III NE
(HOLYROOD NE)

16 MI. TO KATHA
HOLYROOD 12

18

17

16

15

14

19

20

21

22

23

30

29

28

27

26

31

32

33

34

35

6

5

4

3

2

7

8

9

10

11

ELLSWORTH

ELLSWORTH

SMOKY HILL RIVER

RIVER

Ozville

Mud

ELLSWORTH AIRPORT

Tank

Rest Area

Memorial Cem.

Trailer Park

St Francis Boys Home

Country Club

Sewage Disposal

Gaging Sta.

Good Samaritan Home

Water Tank

Cem.

6881 III NE (HOLYROOD NE)

7

8

9

10

11

12

13

14

15

16

17

18

19

20

21

22

23

24

1568

1574

1583

1574

1574

1574

1574

1574

1599

1579

1579

1603

1603

1618

1618

1618

1618

1618

1558

1564

1564

1564

1564

1564

1564

1564

1595

1579

1579

1603

1603

1618

1618

1618

1618

1618

1550

1544

1544

1544

1544

1544

1544

1544

1595

1579

1579

1603

1603

1618

1618

1618

1618

1618

1550

1544

1544

1544

1544

1544

1544

1544

1595

1579

1579

1603

1603

1618

1618

1618

1618

1618

1555

1553

1553

1553

1553

1553

1553

1553

1595

1579

1579

1603

1603

1618

1618

1618

1618

1618

1555

1553

1553

1553

1553

1553

1553

1553

1595

1579

1579

1603

1603

1618

1618

1618

1618

1618

1555

1553

1553

1553

1553

1553

1553

1553

1595

1579

1579

1603

1603

1618

1618

1618

1618

1618

1555

1553

1553

1553

1553

1553

1553

1553

1595

1579

1579

1603

1603

1618

1618

1618

1618

1618

1555

1553

1553

1553

1553

1553

1553

1553

1595

1579

1579

1603

1603

1618

1618

1618

1618

1618

1555

1553

1553

1553

1553

1553

1553

1553

1595

1579

1579

1603

1603

1618

1618

1618

1618

1618

1577

1565

1565

1565

1565

1565

1565

1565

1595

1579

1579

1603

1603

1618

1618

1618

1618

1618

1577

1565

1565

1565

1565

1565

1565

1565

1595

1579

1579

1603

1603

1618

1618

1618

1618

1618

1577

1565

1565

1565

1565

1565

1565

1565

1595

1579

1579

1603

1603

1618

1618

1618

1618

1618

1577

1565

1565

1565

1565

1565

1565

1565

1595

1579

1579

1603

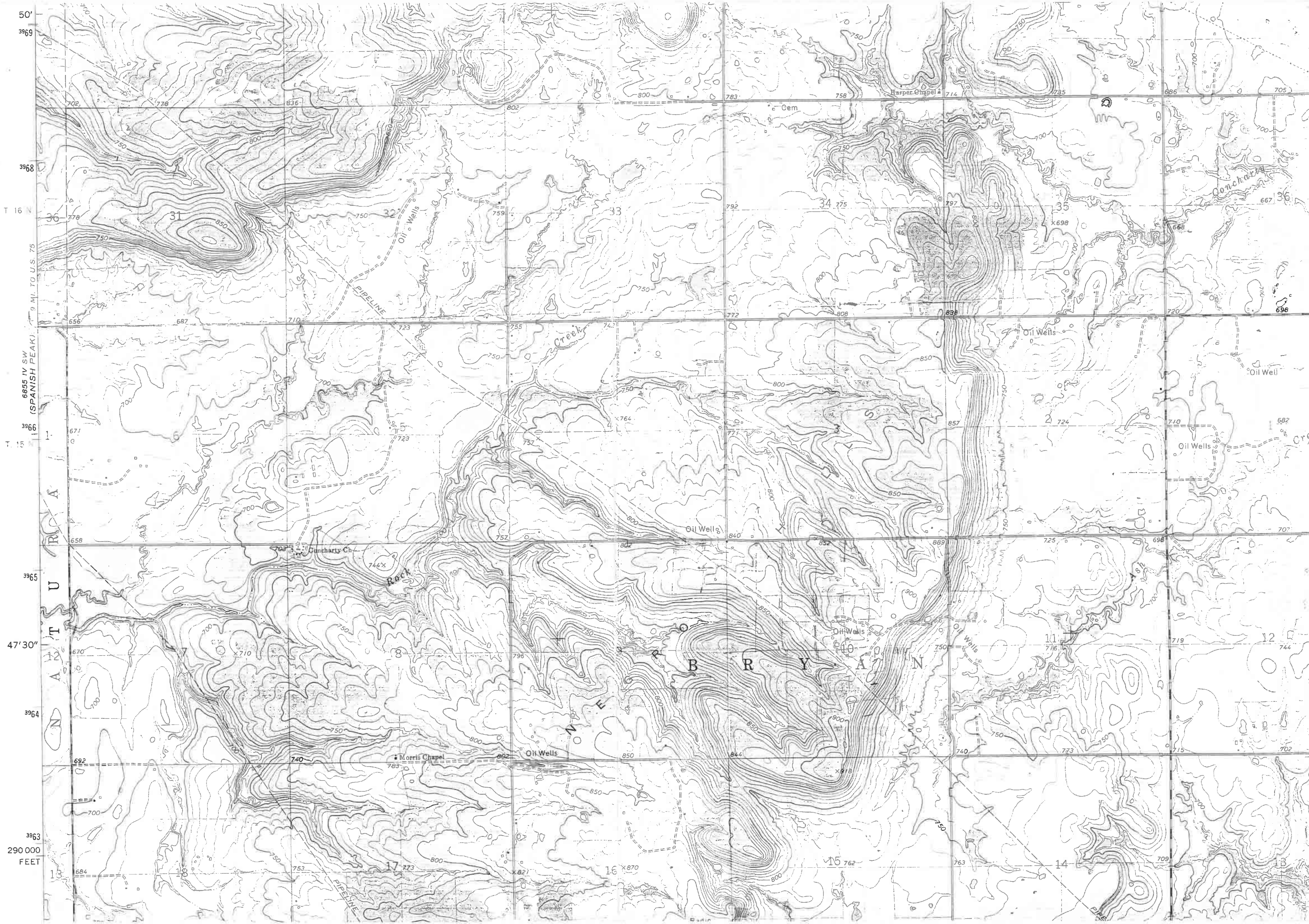
1603

1618

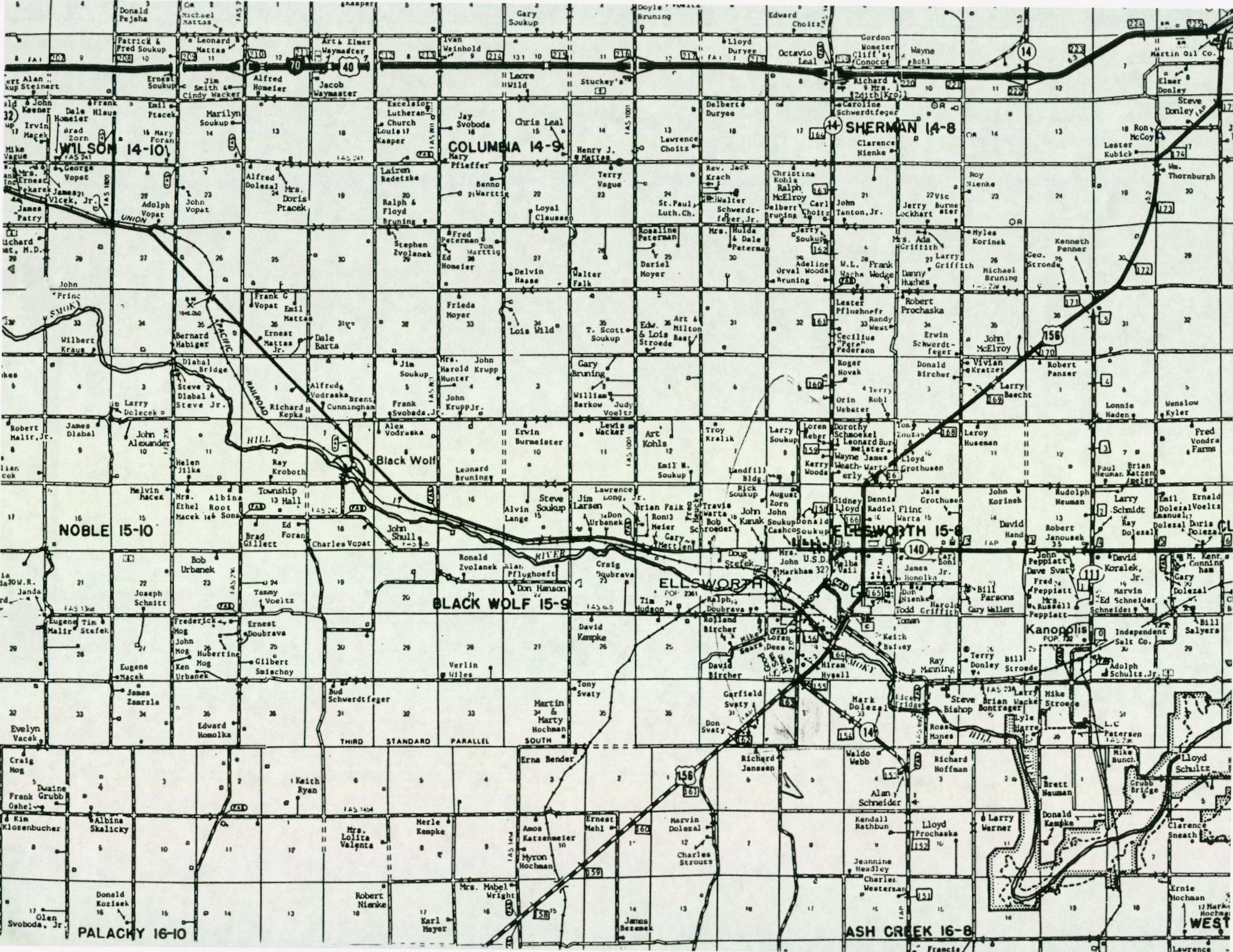
1618

1618

1618



50'
3969
T 16 N
6855 IV SW (SPANISH PEAK)
9 MI. TO U.S. 75
3968
36
31
32
33
34
35
36
656
687
710
723
755
759
792
775
797
698
668
720
698
3966
T 15
671
723
757
764
771
808
857
724
710
682
658
703
Duncharly Ch.
744
Rock
752
802
840
852
869
725
698
707
3965
47'30"
670
710
750
796
796
802
850
844
850
900
750
740
773
715
702
3964
692
700
740
Morris Chapel
783
862
Oil Wells
850
844
740
773
715
702
3963
290 000
FEET
13
684
18
753
17
773
800
821
16
870
800
15
762
763
14
709
13



WILSON 14-10

COLUMBIA 14-9

SHERMAN 14-8

NOBLE 15-10

Black Wolf

ELLSWORTH

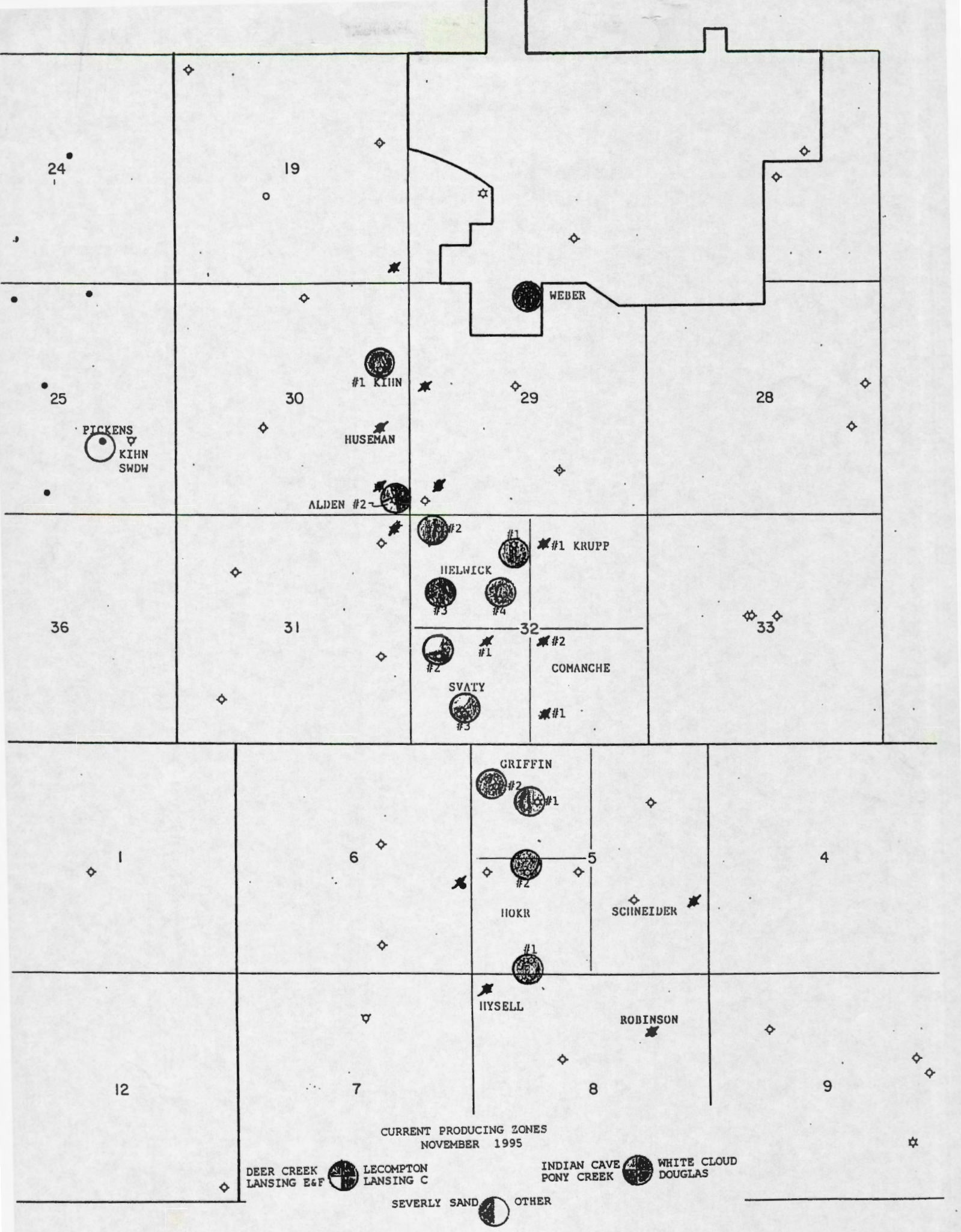
ELLSWORTH 15-8

BLACK WOLF 15-9

PALACKY 16-10

ASH CREEK 16-8

WEST



CURRENT PRODUCING ZONES
NOVEMBER 1995

DEER CREEK
LANSING E&F

LECOMPTON
LANSING C

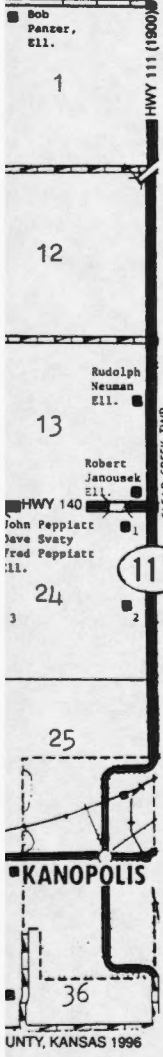
INDIAN CAVE
PONY CREEK

WHITE CLOUD
DOUGLAS

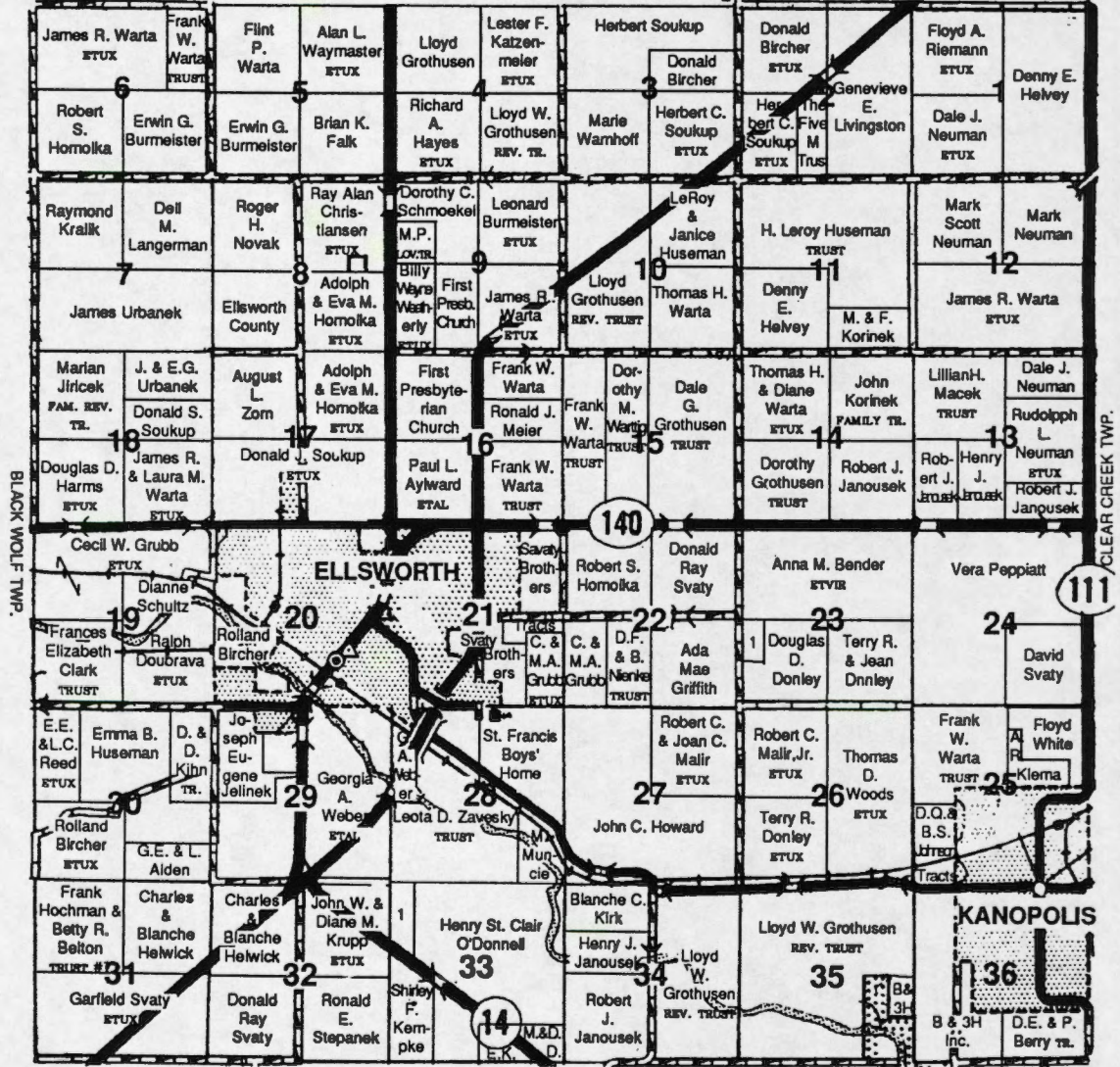
SEVERLY SAND OTHER

sas 67490-0525

R-8-W



T-15-S SHERMAN TWP. **ELLSWORTH** SHERMAN TWP. R-8-W



Section #23 1. Larry Edwards
 Section #33 1. John W. & Diane M. Krupp

ASH CREEK TWP. ELLSWORTH COUNTY, KANSAS 1996