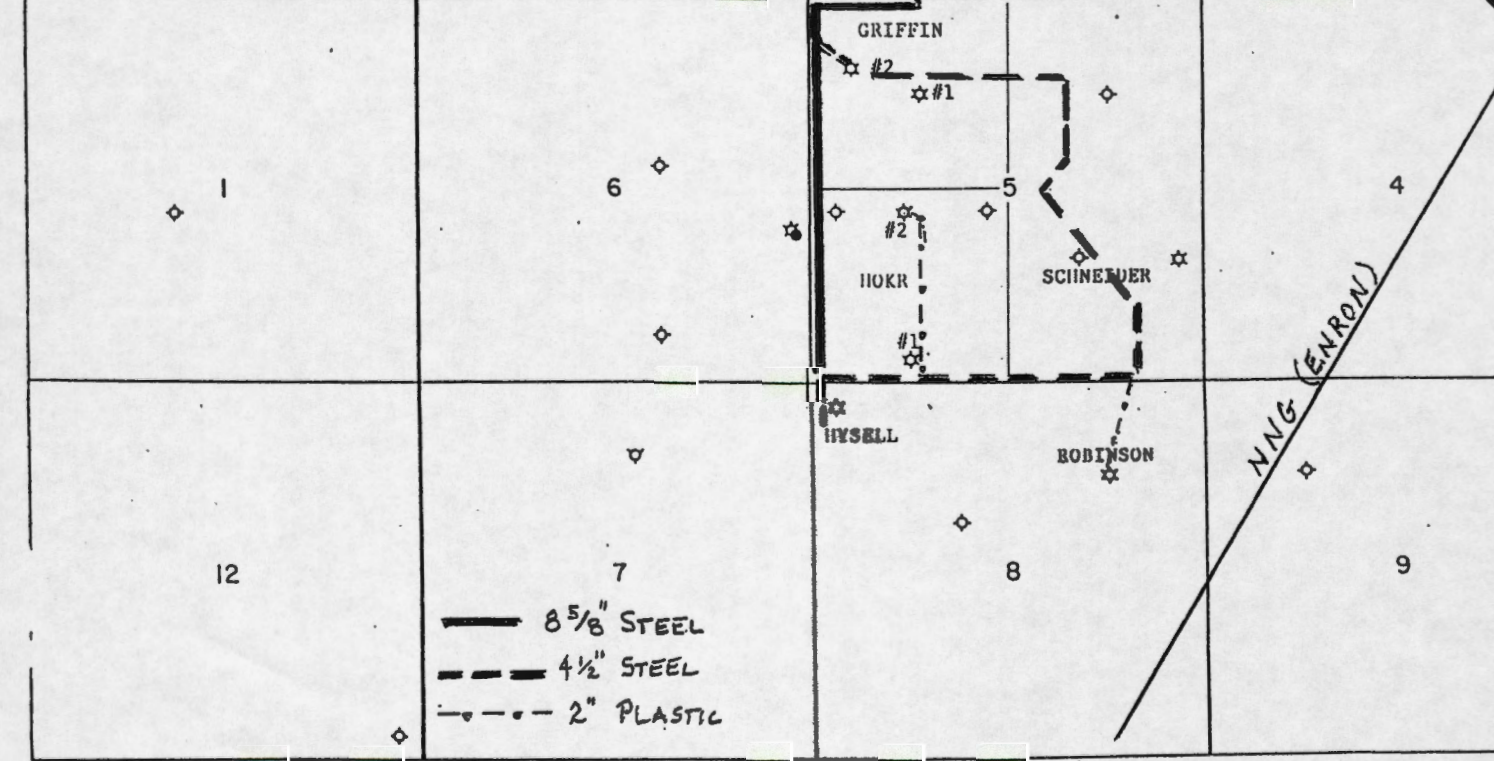
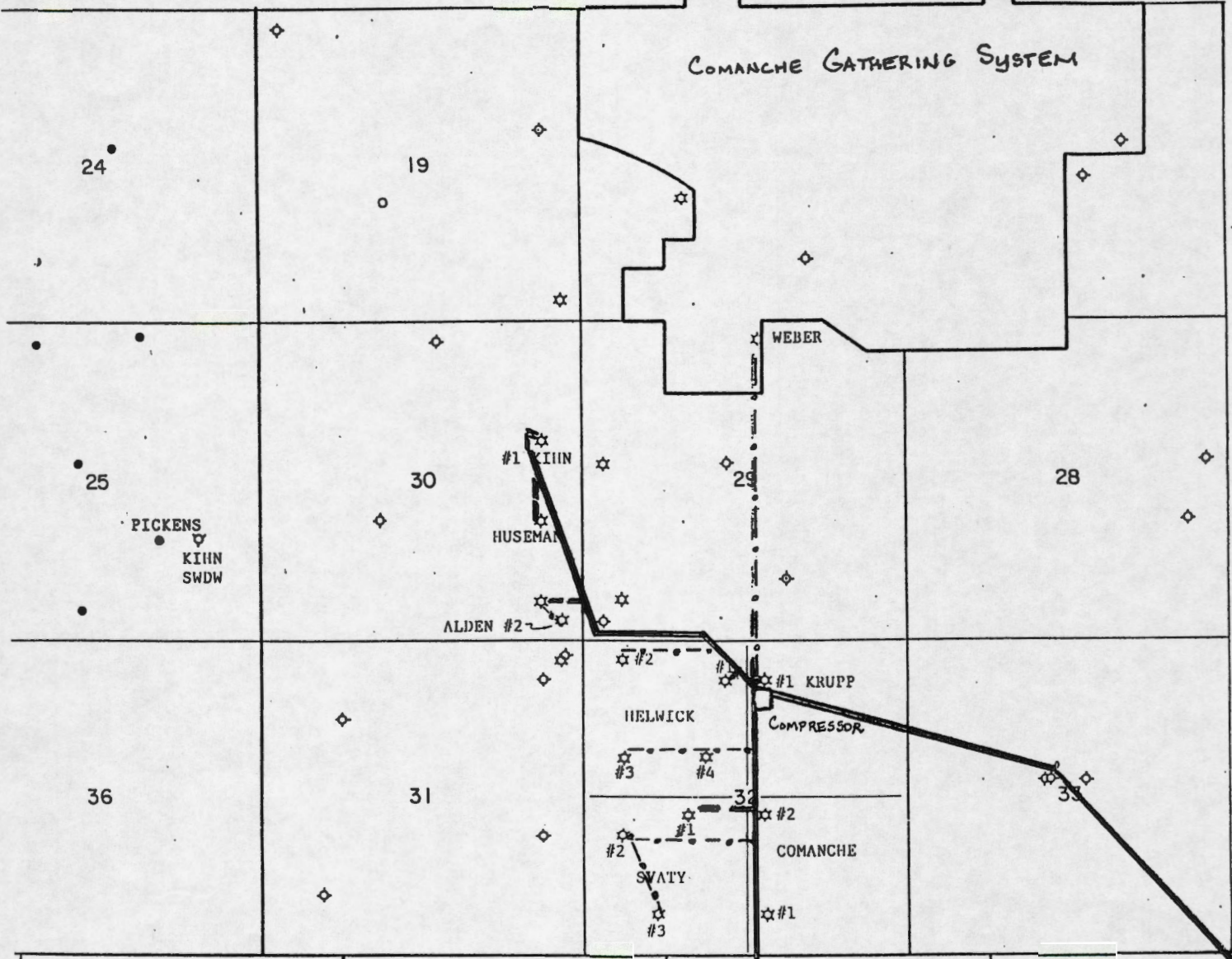
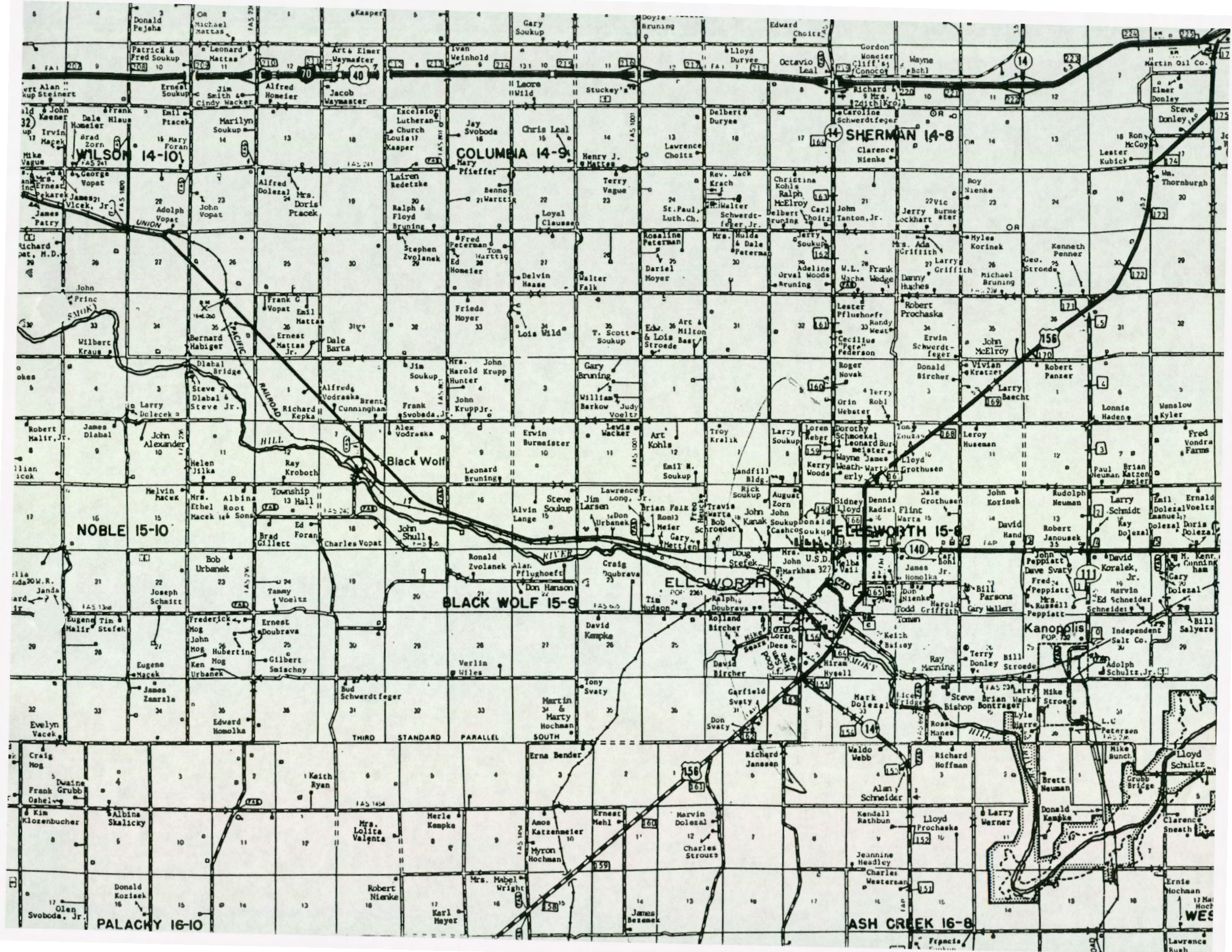


STATE OF KANSAS
NOV 20 1973

COMANCHE GATHERING SYSTEM



- 8 5/8" STEEL
- - - 4 1/2" STEEL
- · - · - 2" PLASTIC



WILSON 14-10

COLUMBIA 14-9

SHERMAN 14-8

NOBLE 15-10

Black Wolf

BLACK WOLF 15-9

ELLSWORTH 15-8

Kanopolis

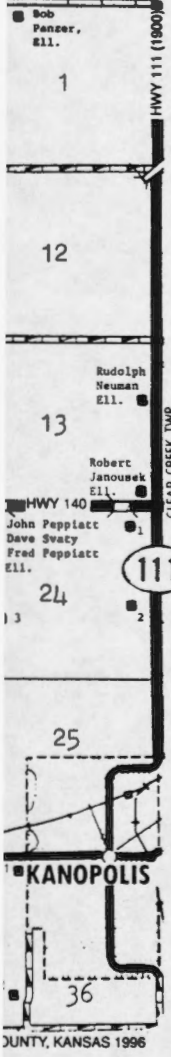
PALACHY 16-10

ASH CREEK 16-8

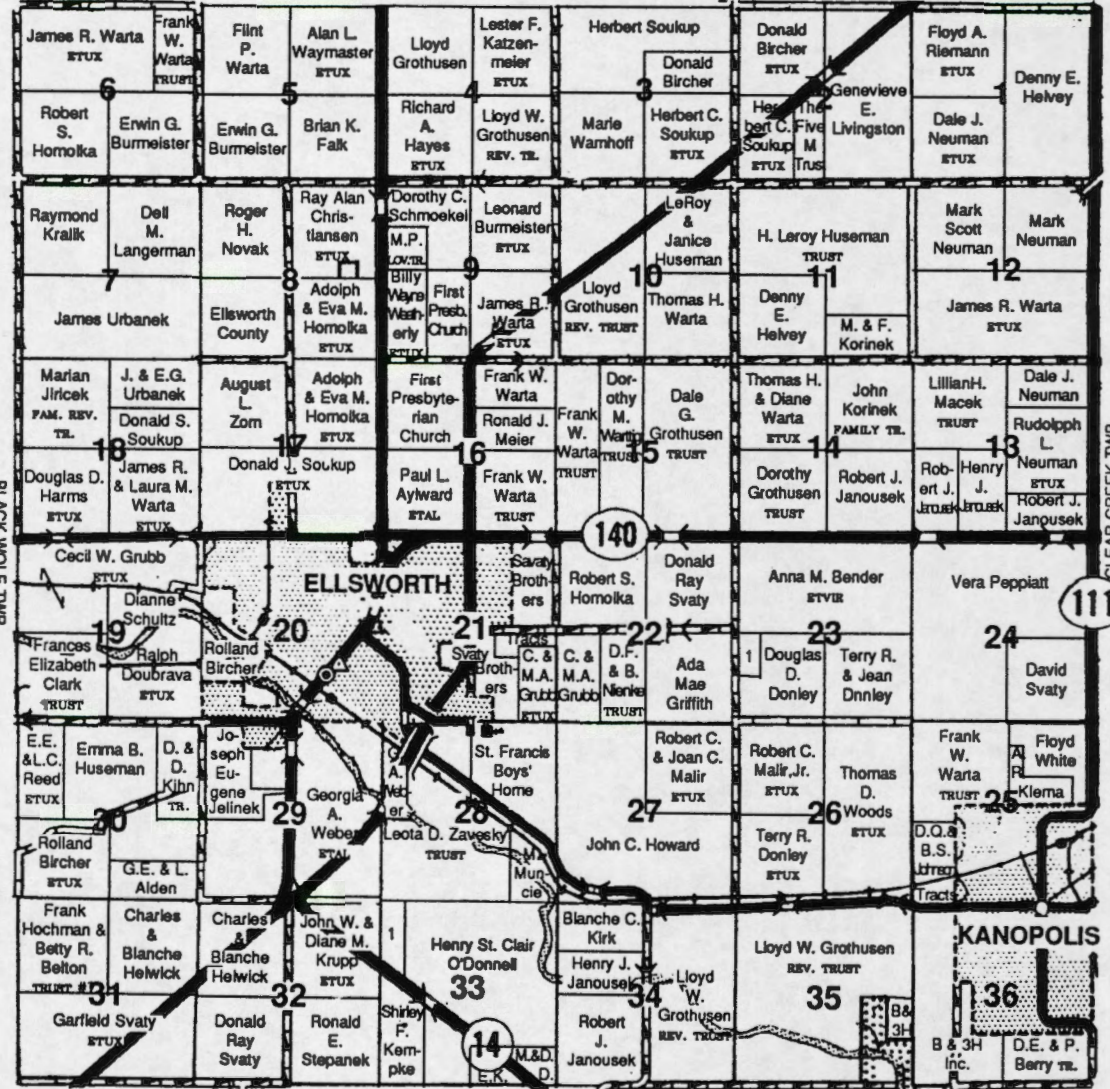
WES

67490-0525

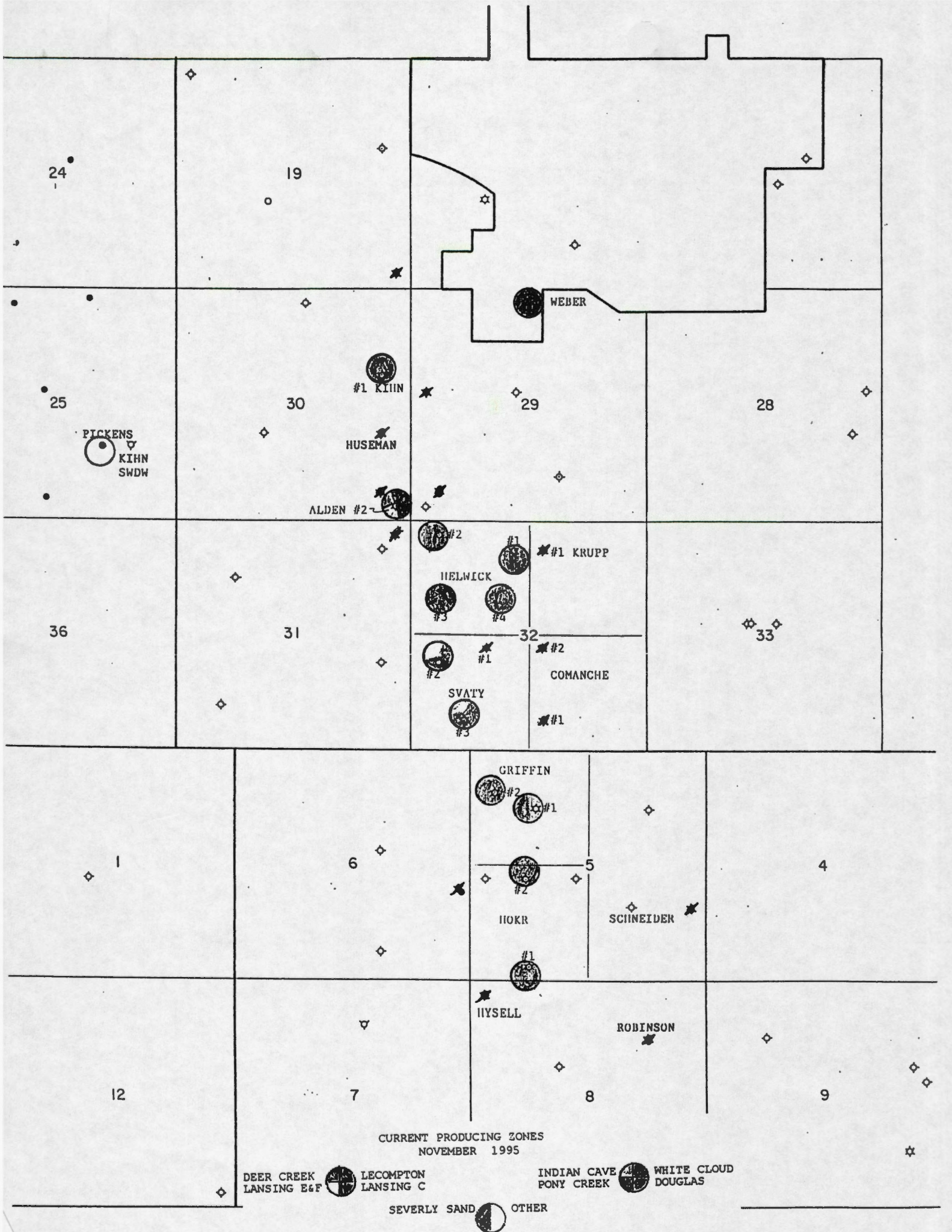
R-8-W



T-15-S SHERMAN TWP. ELLSWORTH SHERMAN TWP. R-8-W



Section #23 1. Larry Edwards
 Section #33 1. John W. & Diane M. Krupp
 ASH CREEK TWP ELLSWORTH COUNTY, KANSAS 1996

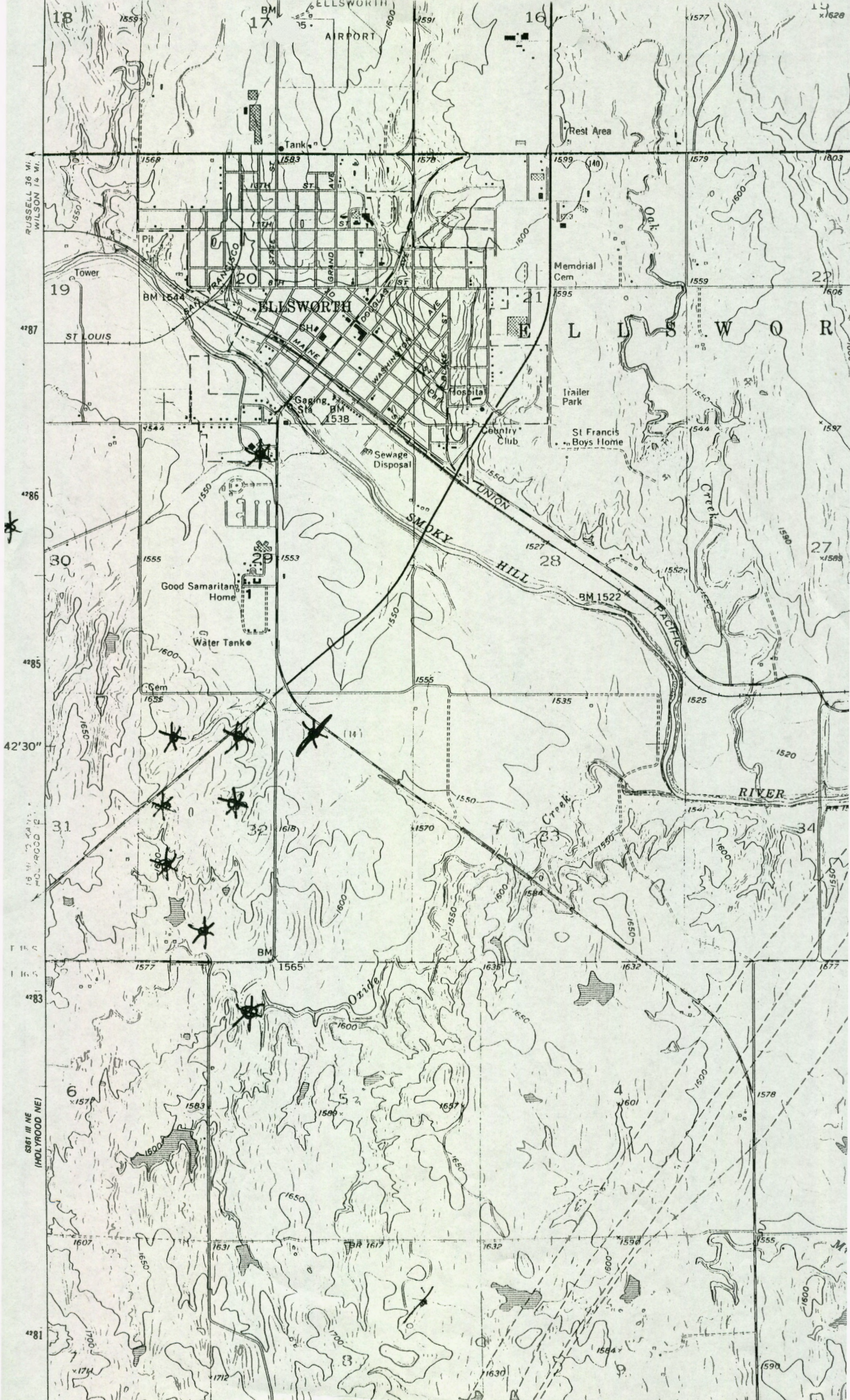


CURRENT PRODUCING ZONES
NOVEMBER 1995

DEER CREEK LANSING E&F
 LECOMPTON LANSING C
 INDIAN CAVE PONY CREEK
 WHITE CLOUD DOUGLAS
 SEVERLY SAND
 OTHER

Blanche M. Campbell et al	Emil Mack	RR. Kottman	Ida Mae Vague	Ida Schudde	E. Artas	Blanche Campbell et al	L.G. Yee, et al	F. Choitz	Harold Reinert	J.H. Tanton Jr.	E. Schultz
Ivan Weinholt	R. McKittrick	James Warfa	Ida Schudde	W.W. Thole	Ida Schudde	L.G. Duryee	R.F. Gerbitz	GEO. Karinek	Bertha Harms	3468 Elmer E. Schultz	
N.S. Weinholt	Ruth Weinholt	Clar. Wild	A. Young	Blanche M. Campbell et al	Raymond Bowers	Martha Schudde	Harvey Thole	Paul L. Aylward	D.E. Holvey	Don F. Nienke	
Mack 4-9-78	Mack 4-9-78	Mack 4-9-78	Mack 4-9-78	Mack 4-9-78	Mack 4-9-78	Mack 4-9-78	Mack 4-9-78	Mack 4-9-78	Mack 4-9-78	Mack 4-9-78	Mack 4-9-78
Ralph Vague	Bernita Peterman et al	Bessie Wild et al	Sue Hass	Milton Bast	Alfons Bast	Emil F. Matias	Wilbur E. Schwerdt feger	Anna Grosnick	W.R. Schwerdt feger	G.H. Bender, et al	
A.R. Vague	Mack 4-9-78	J. Peppiatt Mack 4-13-78	B. Campbell et al	Mack 4-9-78	Mack 4-13-78	Mack 4-9-78	Mack 4-9-78	Mack 4-9-78	Mack 4-9-78	Mack 4-9-78	Mack 4-9-78
Mack 4-9-78	Mack 4-9-78	Mack 4-9-78	Mack 4-9-78	Mack 4-9-78	Mack 4-9-78	Mack 4-9-78	Mack 4-9-78	Mack 4-9-78	Mack 4-9-78	Mack 4-9-78	Mack 4-9-78
E.E. Gamber	Benny Wartig	Kenneth Stroede	Elvira Broddish	Herman Lorge	John Thompkins	Walter R. Wartig	Walter Schwerdt feger	Stella Burmeister	E. Jiricek	G.W. Grosnick	
Mack 4-9-78	Mack 4-9-78	Mack 4-9-78	Mack 4-13-78	Mack 4-13-78	Mack 4-13-78	Mack 4-13-78	Mack 4-13-78	Mack 4-13-78	Mack 4-13-78	Mack 4-13-78	Mack 4-13-78
G.G. Gamber et al	M. Peterman et al	L.C. Hunter et al	Delbert Bruning	Benny Wartig	Blanche H. Campbell et al	Blanche H. Campbell et al	R. Eilrich	Delbert Bruning	J.H. Tanton		
Mack 4-13-78	Mack 4-13-78	Mack 4-13-78	Mack 4-13-78	Mack 4-13-78	Mack 4-13-78	Mack 4-13-78	Mack 4-13-78	Mack 4-13-78	Mack 4-13-78	Mack 4-13-78	Mack 4-13-78
Fred L. Janda	Ronald E. Peterman et al	Louis A. Soukup	Richard Barkow	Richard Barkow	A. Haase	Peterman	Peterman	Yerona Siemsen	P.A. Soukup	Edith Herrin	F.E. Burmeister
Hambright 5-16-76	Hambright 2-14-78	Mack 4-13-78	Mack 4-13-78	Mack 4-13-78	Mack 4-13-78	Mack 4-13-78	Mack 4-13-78	Mack 4-13-78	Mack 4-13-78	Mack 4-13-78	Mack 4-13-78
H.C. Hunter	F. Zeman	E. Haase Mack 4-13-78	Orville Voeltz	W. Voeltz Jr.	F. Haase	Milton Bast	H.E. Moyer	Milton Bast	Oryal Bruning	E. Woods	Wm. Wachs
Mack 4-13-78	Mack 4-13-78	Mack 4-13-78	Mack 4-13-78	Mack 4-13-78	Mack 4-13-78	Mack 4-13-78	Mack 4-13-78	Mack 4-13-78	Mack 4-13-78	Mack 4-13-78	Mack 4-13-78
Larry Adamek	F. Zeman	W.E. Haase	H. Schlesener	Mack 4-13-78	Mack 4-13-78	Mack 4-13-78	Mack 4-13-78	Mack 4-13-78	Mack 4-13-78	Mack 4-13-78	Mack 4-13-78
Mack 4-13-78	Mack 4-13-78	Mack 4-13-78	Mack 4-13-78	Mack 4-13-78	Mack 4-13-78	Mack 4-13-78	Mack 4-13-78	Mack 4-13-78	Mack 4-13-78	Mack 4-13-78	Mack 4-13-78
Frank Man Jr	Delvin B. Haase	H. Nienke	Loren C. Richard	AC Soukup	Wm. Stroede	Arthur Bast	C. Jwanek	A.J. Warfa	G. Eilrich	Bertha Eilrich	J. Terry
Hambright 5-16-78	Hambright 2-14-78	Mack 3-21-79	Hambright 5-16-78	Mack 3-21-79	Mack 3-21-79	Mack 3-21-79	Mack 3-21-79	Mack 3-21-79	Mack 3-21-79	Mack 3-21-79	Mack 3-21-79
Harriette Hunter	John W. Krupp	F. Haase	Hambright 5-16-78	Wm. W. Barkow	Wm. W. Barkow	A.J. Warfa	N.B. Warfa	C. Eilrich	A.L. Waymaster	L.W. Grothusen	Lester Katzenmeier
Mack 4-13-78	Mack 4-13-78	Mack 4-13-78	Mack 4-13-78	Mack 4-13-78	Mack 4-13-78	Mack 4-13-78	Mack 4-13-78	Mack 4-13-78	Mack 4-13-78	Mack 4-13-78	Mack 4-13-78
John J. Krupp	Hulda Nienka	Rose Artas	Clara E. Edman	Rosina Kihn et al	Albert Henke	A.A. Svoboda	Robt. Homolka	Rudolph J. Hokr	Martin Eilrich	Richard A. Hayes	L.W. Grothusen
Mack 4-13-78	Mack 4-13-78	Mack 4-13-78	Mack 4-13-78	Mack 4-13-78	Mack 4-13-78	Mack 4-13-78	Mack 4-13-78	Mack 4-13-78	Mack 4-13-78	Mack 4-13-78	Mack 4-13-78
M. Caldwell Trust	E.G. Burmeister	Erwing Burmeister	Noel F. Croy	John C. Shull	A.J. Armbruster	Edw. A. Armbruster	Delores Ploutz et al	Cecil M. Langerman	Cecelia Novak	Larry K. Soukup	Dorothy Schmoedel
Stephenson 8-8-82	Stephenson 8-8-82	Wm. C. Hysell	Wm. C. Hysell	A.H.M. Soukup	Jno. Krupp	Emil H. Soukup	Ilus Ind 4-9-84	Ilus Ind 4-9-84	Ilus Ind 5-16-78	G.N. Rupe 4-1-80	Adolph Homolka
6. Bruning	L.G. Stephenson	Amelia Sullard	Amelia Sullard	Sun. 4-1-74	Hambright 4-26-78	Geo. E. Erdmann	J. Urbaneck	F. Urbaneck	Ronald F. Lloyd	G.N. Rupe 3-31-80	G.N. Rupe 7-31-80
Wm. Bartunck	Leona Evers	Herman Lange	Ruth Bohatz et al	Ruth Bohatz et al	Louise Cole Erdmann	John Tomkins	M. F. Croy et al	J.A. Nohl	Don J. Soukup	G.N. Rupe 10-10-77	City of Ellsworth
M. Mohr	Schmoedel	Richard	Wm. L. Doubrava et al	Donald Soukup	John Tomkins	John Tomkins	LY Bell 4-2-80	LY Bell 10-21-78	G.N. Rupe 10-10-77	Paul L. Aylward	Wm. Wachs
Marsha L. Yopat et al	L.G. Stephenson 2-11-80	Wm. L. Doubrava et al	Wm. L. Doubrava et al	Wm. L. Doubrava et al	Wm. L. Doubrava et al	Wm. L. Doubrava et al	Wm. L. Doubrava et al	Wm. L. Doubrava et al	Wm. L. Doubrava et al	Wm. L. Doubrava et al	Wm. L. Doubrava et al
Borell 6-11-81	Eufaula 8-19-77	Albina Knackstedt	Albina Knackstedt	Albina Knackstedt	Albina Knackstedt	Albina Knackstedt	Albina Knackstedt	Albina Knackstedt	Albina Knackstedt	Albina Knackstedt	Albina Knackstedt
Karl G. Pflughoeffl	Don R. Svaty et al	Ernest W. Soukup	Ernest W. Soukup	Ernest W. Soukup	Ernest W. Soukup	Ernest W. Soukup	Ernest W. Soukup	Ernest W. Soukup	Ernest W. Soukup	Ernest W. Soukup	Ernest W. Soukup
Borell 6-11-81	L.G. Stephenson 1-25-80	W. Shanelec	W. Shanelec	W. Shanelec	W. Shanelec	W. Shanelec	W. Shanelec	W. Shanelec	W. Shanelec	W. Shanelec	W. Shanelec
Karl G. Pflughoeffl	L.G. Stephenson 1-25-80	Darrell J. Kozisek 10-15-85	Darrell J. Kozisek 10-15-85	Darrell J. Kozisek 10-15-85	Darrell J. Kozisek 10-15-85	Darrell J. Kozisek 10-15-85	Darrell J. Kozisek 10-15-85	Darrell J. Kozisek 10-15-85	Darrell J. Kozisek 10-15-85	Darrell J. Kozisek 10-15-85	Darrell J. Kozisek 10-15-85
Stephenson 1-12-80	John G. Svaty et al	Mary Hunter et al	Mary Hunter et al	Mary Hunter et al	Mary Hunter et al	Mary Hunter et al	Mary Hunter et al	Mary Hunter et al	Mary Hunter et al	Mary Hunter et al	Mary Hunter et al
L.G. Stephenson 8-8-82	L.G. Stephenson 8-8-82	Ilus Ind 9-7-77	Ilus Ind 2-11-80	Ilus Ind 2-11-80	Ilus Ind 2-11-80	Ilus Ind 2-11-80	Ilus Ind 2-11-80	Ilus Ind 2-11-80	Ilus Ind 2-11-80	Ilus Ind 2-11-80	Ilus Ind 2-11-80
Will & Helen Shanelec	K. Svaty	Mary Hunter et al	Will Shanelec	Will Shanelec	Will Shanelec	Will Shanelec	Will Shanelec	Will Shanelec	Will Shanelec	Will Shanelec	Will Shanelec
L.G. Stephenson 8-8-82	Ilus Ind 1-28-78	Ham bright 7-10-79	Ilus Ind 6-1-78	Ilus Ind 6-1-78	Ilus Ind 6-1-78	Ilus Ind 6-1-78	Ilus Ind 6-1-78	Ilus Ind 6-1-78	Ilus Ind 6-1-78	Ilus Ind 6-1-78	Ilus Ind 6-1-78
Marg. Kruse	Marg. Katzenmeier	Albina Barba	Sylvia Cannon	Sylvia Cannon	Sylvia Cannon	Sylvia Cannon	Sylvia Cannon	Sylvia Cannon	Sylvia Cannon	Sylvia Cannon	Sylvia Cannon

File Kihn SWD Ellsworth



RUSSELL 36 MI.
WILSON 14 MI.

42°37'

42°36'

42°35'

42°30"

18 MI. TO
POLAROID P.

42°28'

6361 III NE
(HOLYROOD NE)

42°21'

BM

Tank

SH

Gaging Sta

Good Samaritan Home

Water Tank

Gem

BM

6

BR 1617

3

ELLSWORTH
AIRPORT

ELLSWORTH

SMOKY HILL
UNION PACIFIC

Oxide

16

Rest Area

Memorial Cem

Trailer Park

St Francis Boys Home

28

32

4

BR 1596

5

15
x1628

1803

22

ELLSWORTH

27
x1588

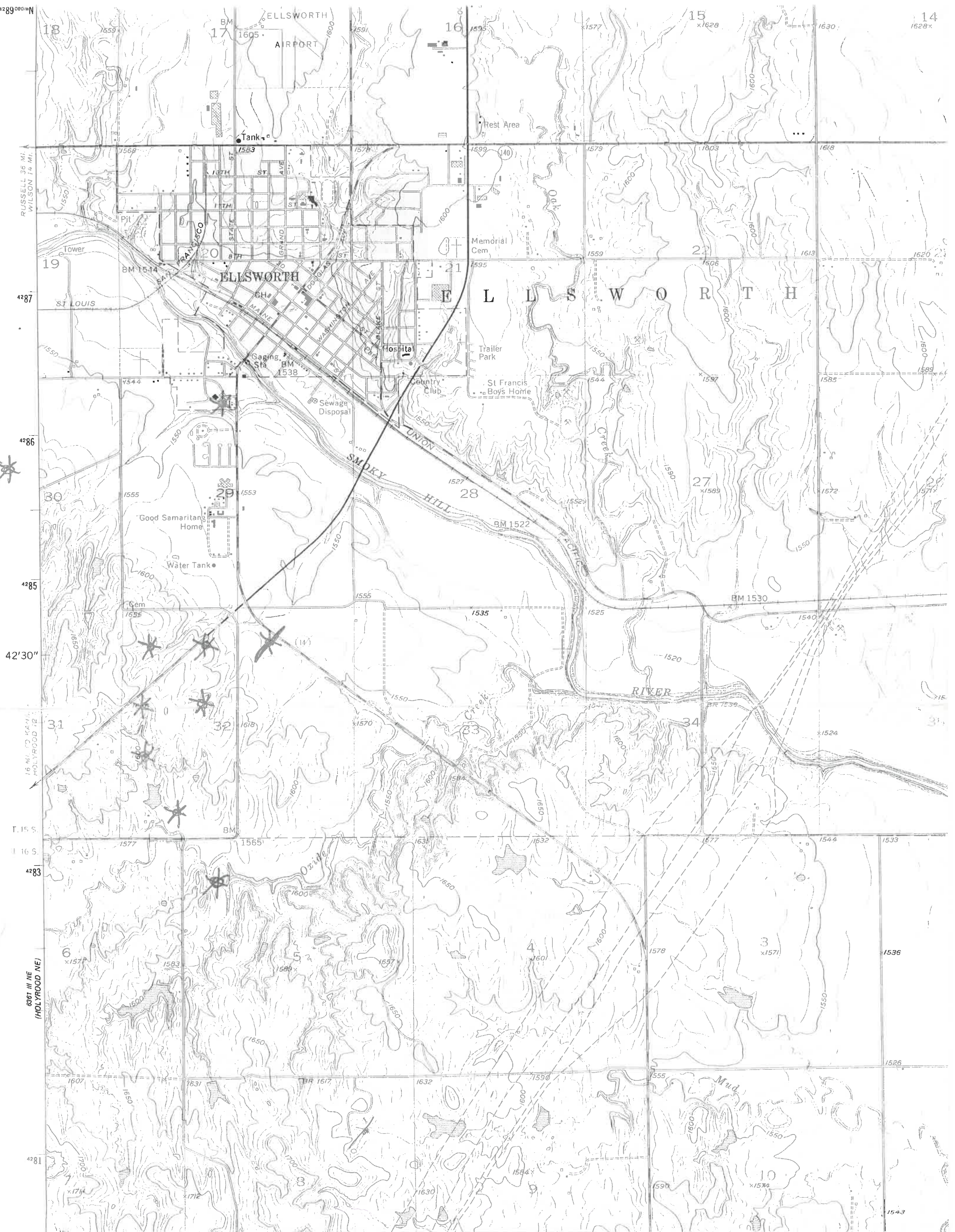
34

1677

1578

1555

590



4289 0000
RUSSELL 36 MI.
WILSON 14 MI.

4287

4286

4285

42'30"

16 MI. TO KATAHDY
HOLYROOD 12

T. 15 S.

4283

6981 MI. NE
(HOLYROOD NE)

4281

14
1628x

15
x1628

16
1595

17
1605

18
1559

19

20

21

22

28

27
x1589

30

29

31

32

34

6
x1571

5
x1583

4
x1601

3
x1571

7
x1714

8
x1712

9
x1630

10
x1572

1543

1526

1536

1533

1524

1540

1572

1585

1620

1618

1630

1568

1550

1555

1550

1577

1583

1607

1574

1544

1555

1560

1577

1583

1607

1574

1544

1555

1560

1577

1583

1607

1574

1544

1555

1560

1577

1583

1607

1574

1544

1555

1560

1577

1583

1607

1574

1544

1555

1560

1577

1583

1607

1574

1544

1555

1560

1577

1583

1607

1574

1544

1555

1560

1577

1583

1607

1574

1544

1555

1560

1577

1583

1607

1574

1544

1555

1560

1577

1583

1607

1574

1544

1555

1560

1577

1583

1607

1574

1544

1555

1560

1577

1583

1607

1574

1544

1555

1560

1577

1583

1607

1574

1544

1555

1560

1577

1583

1607

1574

1544

1555

1560

1577

1583

1607

1574

1544

1555

1560

1577

1583

1607

1574

1544

1555

1560

1577

1583

1607

1574

1544

1555

1560

1577

1583

1607

1574

1544

1555

1560

1577

1583

1607

1574

1544

1555

1560

1577

1583

1607

1574

1544

1555

1560

1577

1583

1607

1574

1544

1555

1560

1577

1583

1607

1574

1544

1555

1560

1577

1583

1607

1574

1544

1555

1560

1577

1583

1607

1574

1544

1555

1560

1577

1583

1607

1574

1544

1555

1560

1577

1583

1607

1574

1544

1555

1560

1577

1583

1607

1574

1544

1555

1560

1577

1583

1607

1574

1544

1555

1560

1577

1583

1607

1574

1544

1555

1560

1577

1583

1607

1574

1544

1555

1560

1577

1583

1607

1574

1544

1555

1560

1577

1583

1607

1574

1544

1555

1560

1577

1583

1607

1574

1544

1555

1560

1577

1583

1607

1574

1544

1555

1560

1577

1583

1607

1574

1544

1555

1560

1577

1583

1607

1574

1544

1555

1560

1577

1583

1607

1574

1544

1555

1560

1577

1583

1607

1574

1544

1555

1560

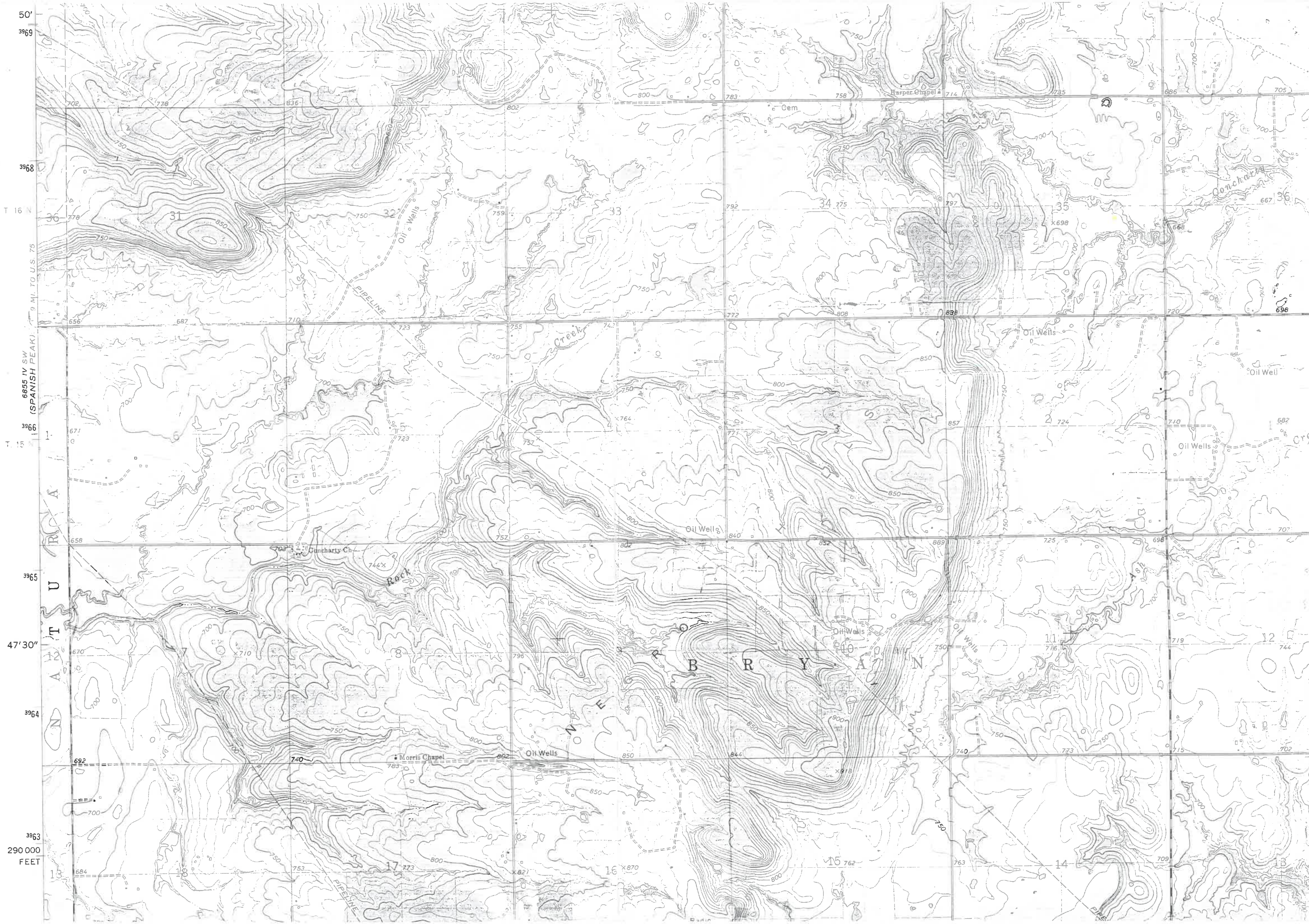
1577

1583

1607

1574

1544



50'
3969
T 16 N
3968
3966
3965
47'30"
3964
3963
290 000
FEET

6855 IV SW
(SPANISH PEAK)
9 MI. TO U.S. 75
656 687 710 723 755 783 792 797 808 898 920 998
671 677 700 723 757 764 771 840 857 869 725 698 707
658 703 744X 752 802 852 889 710 682
670 710 750 796 796 840 850 844 740 773 715 702
692 700 740 783 862 850 844 740 773 715 702
684 753 773 800 821 870 800 762 763 709 702
36 31 32 33 34 35 36
8 9 10 11 12
13 14 15 16 17 18