

4289 0000
RUSSELL 36 MI.
WILSON 14 MI.

4287

4286

4285

42'30"

16 MI. TO KATAHDY
HOLYROOD 12

T. 15 S.

4283

6981 MI. NE
(HOLYROOD NE)

4281

14
1628x

15
x1628

16
1595

17
1605

18
1559

1618

1603

1599

1583

1568

1620

1606

1595

1577

1558

1585

1597

1559

1553

1555

1572

1550

1535

1555

1555

1574

1544

1525

1550

1550

1533

1544

1632

1565

1577

1536

1578

1632

1631

1607

1526

1555

1590

1632

1607

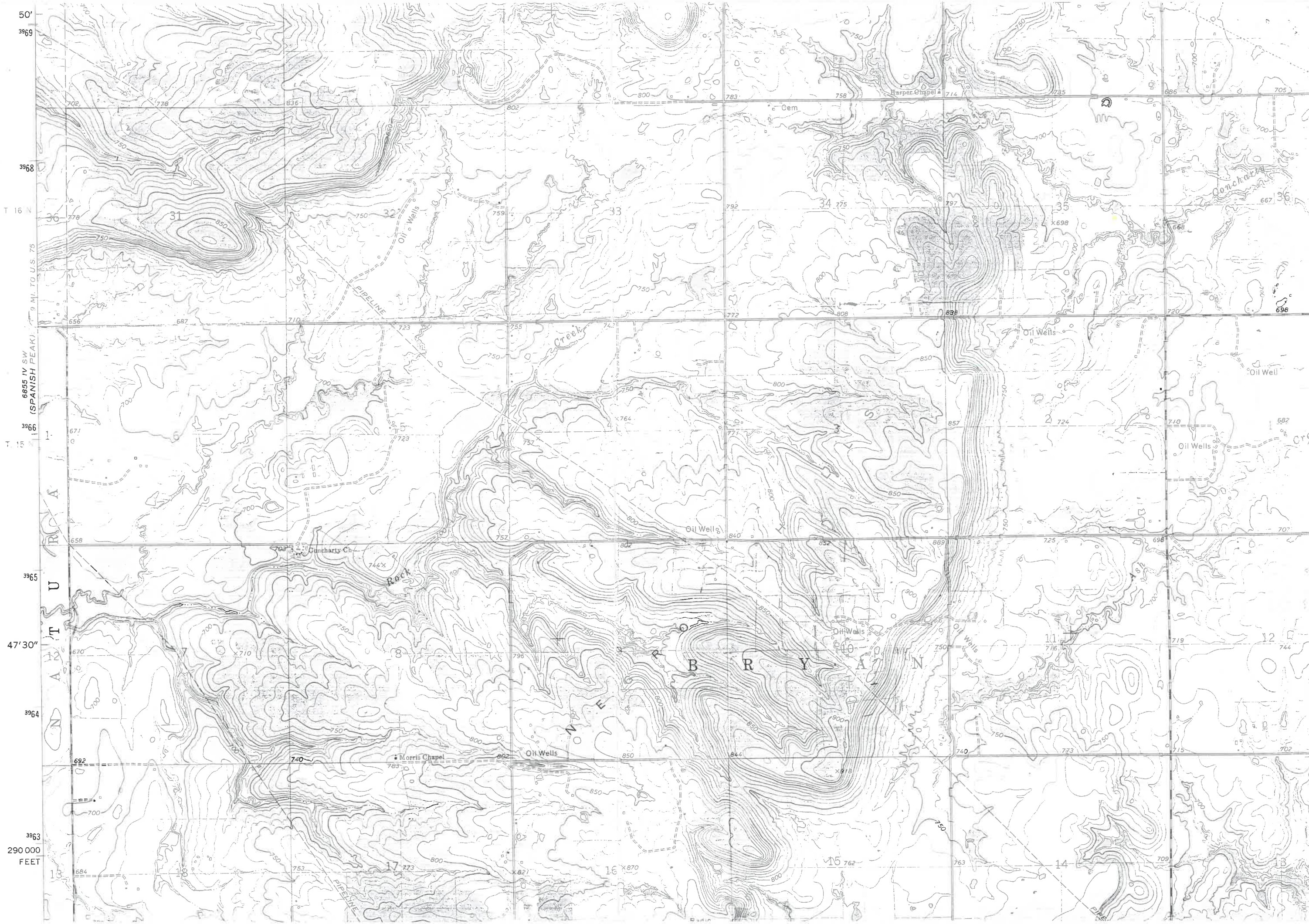
1543

1590

1630

1712

1705



50'
3969
3968
T 16 N
3966
T 15
3965
47'30"
3964
3963
290 000
FEET

6855 IV SW
(SPANISH PEAK)
9 MI. TO U.S. 75

702 708 836 802 783 758 714 785 666 705

778 750 750 750 759 792 34 775 797 35 668 667 36

656 687 710 723 755 750 772 808 898 720 698

671 677 723 757 764 771 857 724 710 682

658 703 744 752 802 852 809 725 698

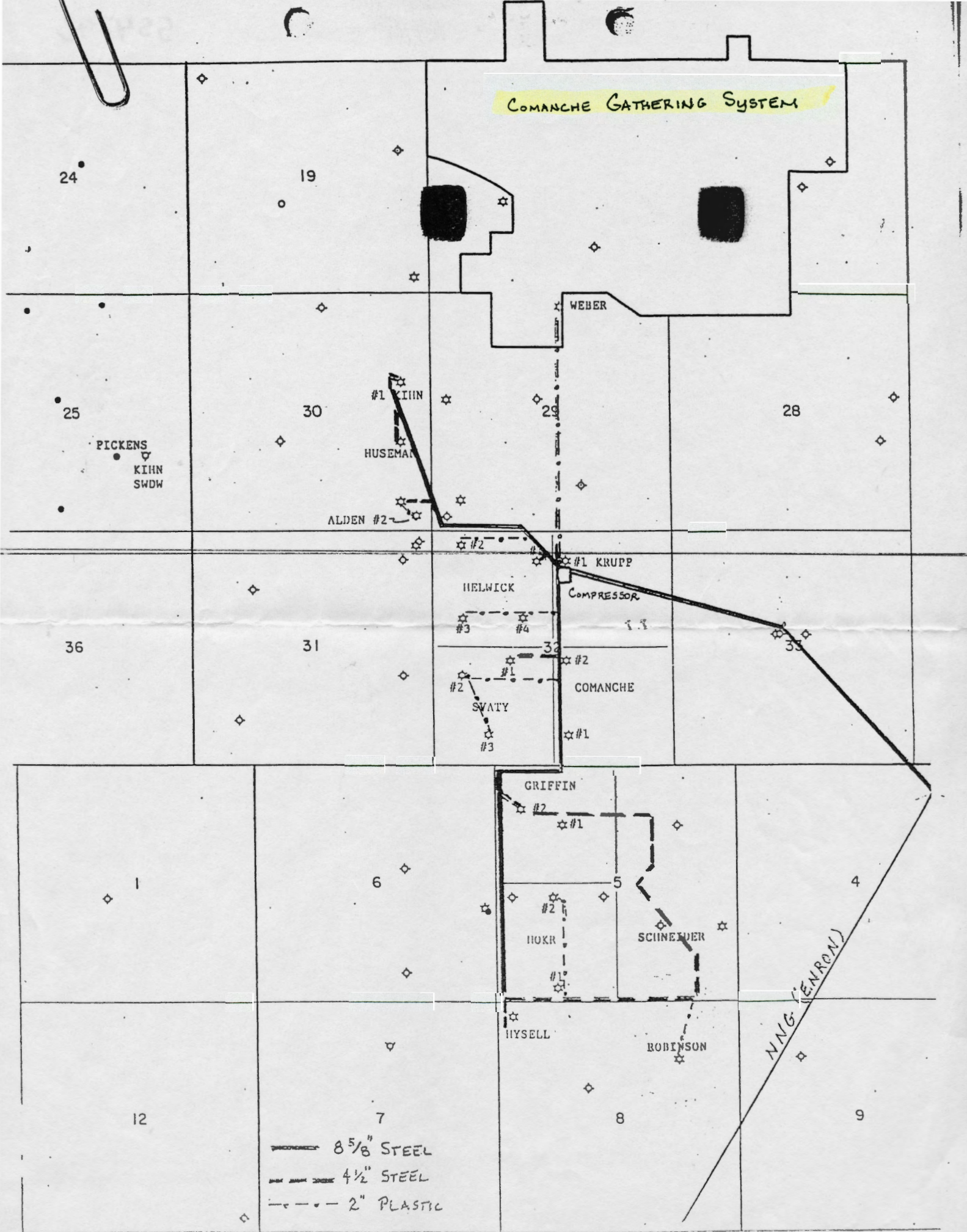
670 710 750 796 796 840 850 800 750 719 12 744

692 700 750 750 862 850 844 740 773 715 702

684 753 773 800 821 870 15 762 763 14 709 13

Oil Wells
Creek
PIPELINE
Harper Chapel
Gem
Duncharly Ch.
Rock
Morris Chapel
Berry Area
A T U N

COMANCHE GATHERING SYSTEM



24

19

25

30

28

PICKENS
KIHN
SWDW

#1 KIHN
HUSEMAN

ALDEN #2

WEBER

#1 KRUPP
COMPRESSOR

HELWICK
#3 #4

36

31

COMANCHE

#2 SWATY
#1 #3

GRIFFIN

#2 #1

HOKR

SCHNEIDER

HYSELL

ROBINSON

NNG (ENRON)

1

6

4

12

7

8

9

- 8 5/8" STEEL
- 4 1/2" STEEL
- 2" PLASTIC