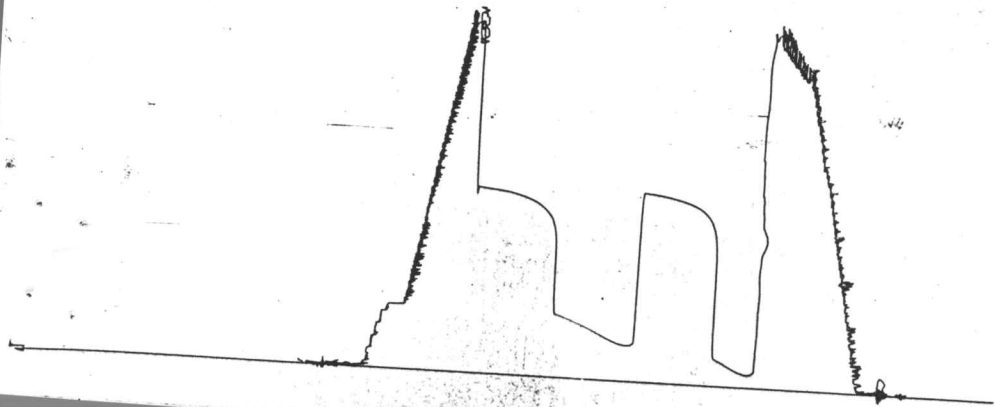


13400

Alt # 13234

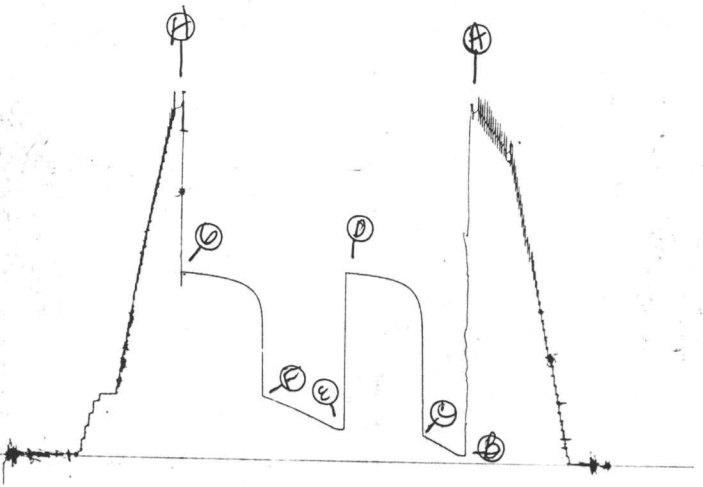
0



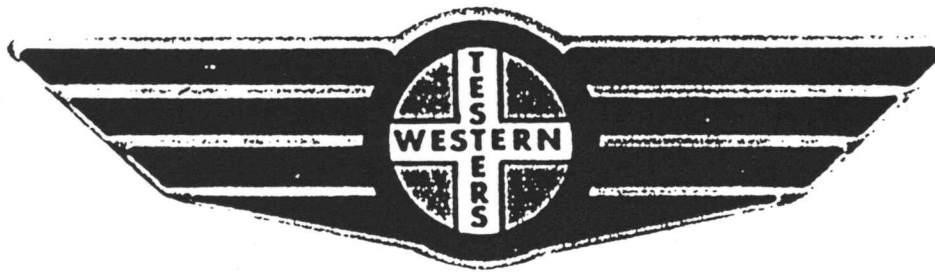
6233

Site # 13234

I



FORMATION TEST REPORT



Home Office:

Wichita, Kansas 67201

P.O. Box 1599

Phone (316) 262-5861

COMPANY ENERGY EXPLORATION INC. LEASE & WELL NO. HANNA #1 SEC. 9 TWP. 15S RGE. 29WTEST NO. 1 DATE 8/23/88

WESTERN TESTING CO. INC.
SUBSURFACE PRESSURE SURVEY

DATE : 8-23-88 TICKET : 13234
CUSTOMER : ENERGY EXPLORATION INC. LEASE : HANNA
WELL : #1 TEST: 1 GEOLOGIST : K ROBERTS
ELEVATION : - FORMATION : LANSING E&F
SECTION : 9 TOWNSHIP : 15S
RANGE : 29W COUNTY : GOVE STATE : KANSAS
GAUGE SN# : 6233 RANGE : 4000 CLOCK : 12

INTERVAL FROM : 3724 TO : 3754 TOTAL DEPTH : 3754
DEPTH OF SELECTIVE ZONE :
PACKER DEPTH : 3719 SIZE : 6.75
PACKER DEPTH : 3724 SIZE : 6.75
PACKER DEPTH : SIZE :
PACKER DEPTH : SIZE :

DRILLING CON. : WARRIOR RIG 2
MUD TYPE : CHEMICAL VISCOSITY : 42
WEIGHT : 9.2 WATER LOSS (CC) : 10.8
CHLORIDES (PPM) : 4000
JARS-MAKE : - SERIAL NUMBER :
DID WELL FLOW ? : NO REVERSED OUT ? : NO

DRILL COLLAR LENGTH : 0 FT I.D. inch : 0.00
WEIGHT PIPE LENGTH : 0 FT I.D. inch : 0.00
DRILL PIPE LENGTH : 3704 FT I.D. inch : 3.80
TEST TOOL LENGTH : 20 FT TOOL SIZE : 5.50
ANCHOR LENGTH : 30 FT ANCHOR SIZE : 5.50
SURFACE CHOKE SIZE : .75 IN BOTTOM CHOKE SIZE : .75
MAIN HOLE SIZE : 7.875 IN TOOL JOINT SIZE : 4.5 XH

BLOW COMMENT #1 : INITIAL FLOW-STRONG BLOW-BOTTOM OF BUCKET IN 16 MINUTE
BLOW COMMENT #2 : FINAL FLOW-STRONG BLOW-BOTTOM OF BUCKET IN 14 MINUTES
BLOW COMMENT #3 :
BLOW COMMENT #4 :

RECOVERED : 90 FT OF: MUDDY WATER
50% MUD-50% WTR
RECOVERED : 630 FT OF: WATER

CHLORIDES: 56000 PPM

Total Barrels Fluid = 10.10
Total Fluid Prod Rate = 161.58 BFPD
Indicated Wtr Rate = 151.48 BWPD

REMARK 1 :
REMARK 2 :
REMARK 3 :
REMARK 4 :

SET PACKER(S) : 4:35 PM

TIME STARTED OFF BOTTOM : 8:05 PM

WELL TEMPERATURE : 119

INITIAL HYDROSTATIC PRESSURE

(A) 1833

INITIAL FLOW PERIOD MIN: 30

(B) 42 PSI TO (C) : 145

INITIAL CLOSED IN PERIOD MIN: 60

(D) 987

FINAL FLOW PERIOD MIN: 60

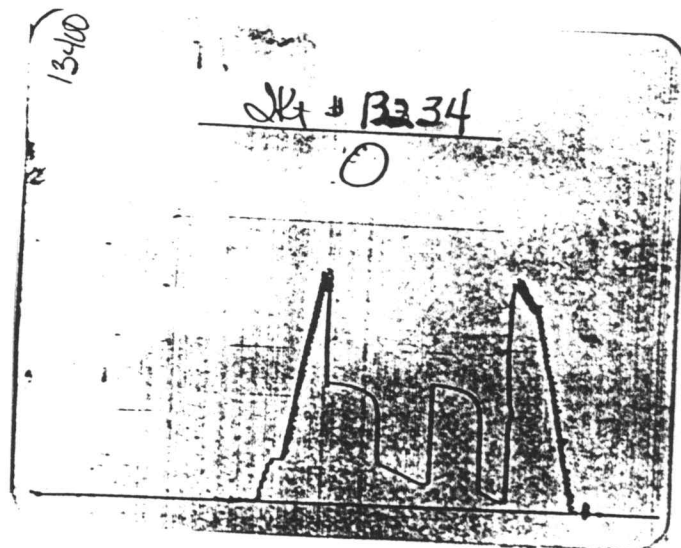
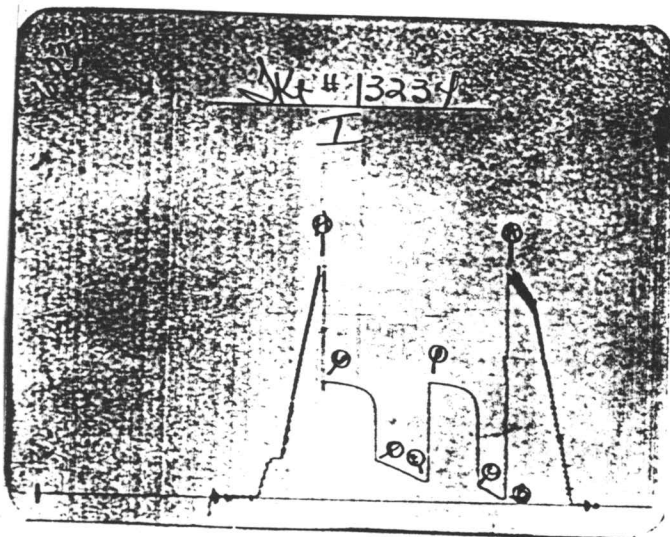
(E) 169 PSI TO (F) : 338

FINAL CLOSED IN PERIOD MIN: 63

(G) 975

FINAL HYDROSTATIC PRESSURE

(H) 1819



WESTERN TESTING CO. INC.
WICHITA-KANSAS

Pressure Transient Report

COMPANY : ENERGY EXPLORATION INC.
RIG : GOVE-KANSAS
FIELD : HANNA
WELL : #1
DATE : 8-23-88
GAUGE NO : 6233

OPERATIONAL COMMENTS

COMPANY : ENERGY EXPLORATION INC.
 WELL : #1
 GAUGE # : 6233
 DATE : 23/ 8/88

FIELD : HANNA
 JOB # : 13234
 DEPTH : 3754
 TEST :

DATA No.	REAL TIME HR:MN:SS	ELAPSE TIME DELTA HOURS	PRESSURE PSIG	TEMP DEG F	DELTA P Pi-P(i-1)
INITIAL FLOW					
2	4:35:0	0.000	42.000	119.00	0.000
3	4:39:59	0.083	42.000	119.00	0.000
4	4:45:0	0.167	59.000	119.00	17.000
5	4:50:0	0.250	81.000	119.00	22.000
6	4:54:59	0.333	101.000	119.00	20.000
7	5:0:0	0.417	119.000	119.00	18.000
8	5:5:0	0.500	145.000	119.00	26.000
INITIAL SHUT-IN					
9	5:8:0	0.550	689.000	119.00	544.000
10	5:11:0	0.600	826.000	119.00	137.000
11	5:14:0	0.650	874.000	119.00	48.000
12	5:17:0	0.700	902.000	119.00	28.000
13	5:20:0	0.750	918.000	119.00	16.000
14	5:23:0	0.800	932.000	119.00	14.000
15	5:26:0	0.850	941.000	119.00	9.000
16	5:29:0	0.900	949.000	119.00	8.000
17	5:32:0	0.950	956.000	119.00	7.000
18	5:35:0	1.000	962.000	119.00	6.000
19	5:38:0	1.050	966.000	119.00	4.000
20	5:41:0	1.100	969.000	119.00	3.000
21	5:44:0	1.150	972.000	119.00	3.000
22	5:47:0	1.200	975.000	119.00	3.000
23	5:50:0	1.250	978.000	119.00	3.000
24	5:53:0	1.300	981.000	119.00	3.000
25	5:56:0	1.350	983.000	119.00	2.000
26	5:59:0	1.400	985.000	119.00	2.000
27	6:2:0	1.450	986.000	119.00	1.000
28	6:5:0	1.500	987.000	119.00	1.000
FINAL FLOW					
29	6:6:0	1.517	169.000	119.00	-818.000
30	6:9:59	1.583	171.000	119.00	2.000
31	6:15:0	1.667	184.000	119.00	13.000
32	6:20:0	1.750	202.000	119.00	18.000
33	6:24:59	1.833	219.000	119.00	17.000
34	6:30:0	1.917	235.000	119.00	16.000
35	6:35:0	2.000	251.000	119.00	16.000
36	6:39:59	2.083	266.000	119.00	15.000
37	6:45:0	2.167	282.000	119.00	16.000
38	6:50:0	2.250	295.000	119.00	13.000
39	6:54:59	2.333	310.000	119.00	15.000
40	7:0:0	2.417	324.000	119.00	14.000
41	7:5:0	2.500	338.000	119.00	14.000
FINAL SHUT-IN					
42	7:8:0	2.550	802.000	119.00	464.000
43	7:11:0	2.600	854.000	119.00	52.000
44	7:14:0	2.650	882.000	119.00	28.000
45	7:17:0	2.700	898.000	119.00	16.000
46	7:20:0	2.750	911.000	119.00	13.000
47	7:23:0	2.800	922.000	119.00	11.000
48	7:26:0	2.850	931.000	119.00	9.000

COMPANY : ENERGY EXPLORATION INC.
WELL : #1
GAUGE # : 6233
DATE : 23/ 8/88

FIELD : HANNA
JOB # : 13234
DEPTH : 3754
TEST :

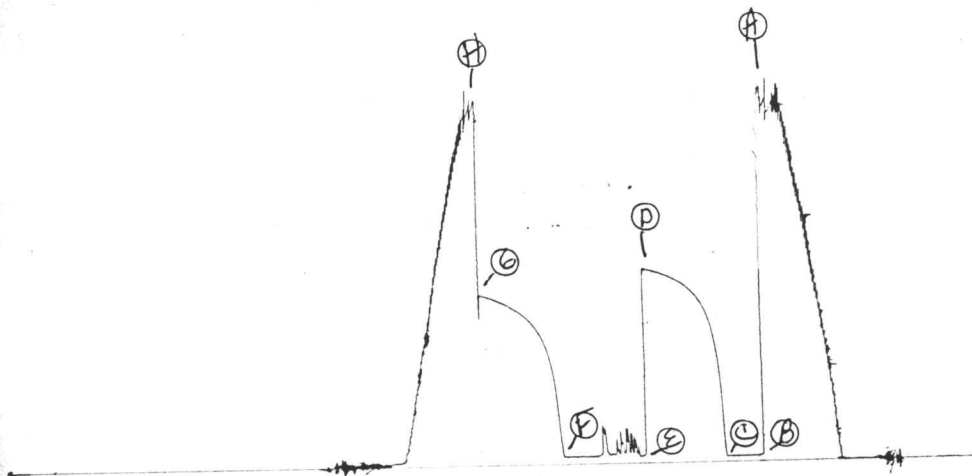
DATA No.	REAL TIME HR:MN:SS	ELAPSE TIME DELTA HOURS	PRESSURE PSIG	TEMP DEG F	DELTA P Pi-P(i-1)
49	7:29: 0	2.900	937.000	119.00	6.000
50	7:32: 0	2.950	942.000	119.00	5.000
51	7:35: 0	3.000	947.000	119.00	5.000
52	7:38: 0	3.050	952.000	119.00	5.000
53	7:41: 0	3.100	954.000	119.00	2.000
54	7:44: 0	3.150	957.000	119.00	3.000
55	7:47: 0	3.200	960.000	119.00	3.000
56	7:50: 0	3.250	963.000	119.00	3.000
57	7:53: 0	3.300	965.000	119.00	2.000
58	7:56: 0	3.350	967.000	119.00	2.000
59	7:59: 0	3.400	969.000	119.00	2.000
60	8: 2: 0	3.450	971.000	119.00	2.000
61	8: 5: 0	3.500	973.000	119.00	2.000
62	8: 8: 0	3.550	975.000	119.00	2.000

WESTERN TESTING CO. INC.

6233

JK # 13235

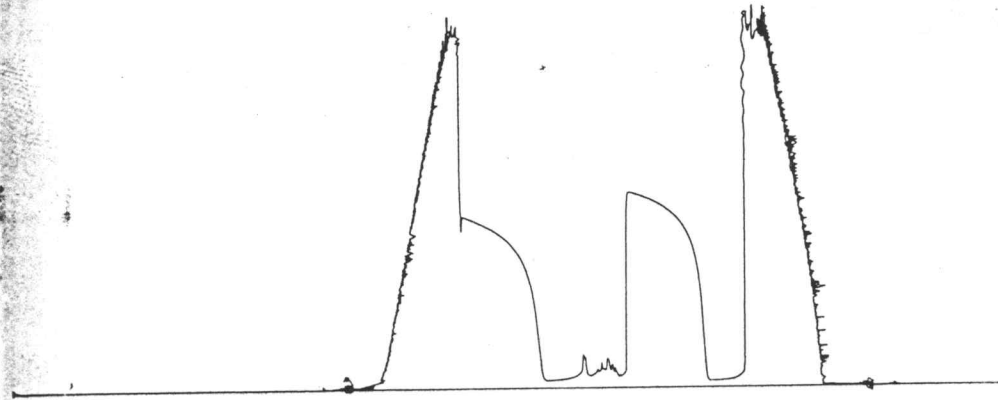
I



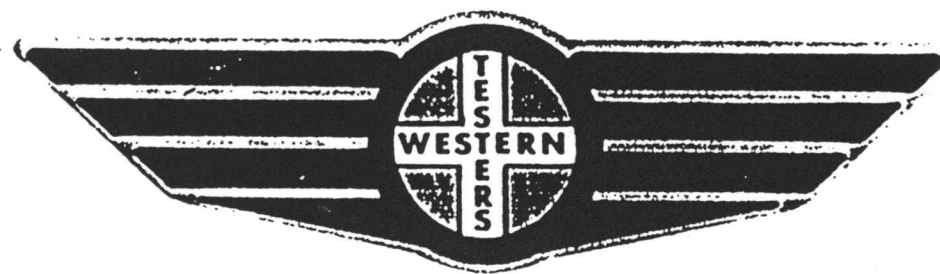
13460

Jkt # 13235

0



FORMATION TEST REPORT



Home Office:

Wichita, Kansas 67201

P.O. Box 1599

Phone (316) 262-5861

WESTERN TESTING CO. INC.
SUBSURFACE PRESSURE SURVEY

DATE : 8-24-88
CUSTOMER : ENERGY EXPLORATION INC.
WELL : #1 TEST: 2
ELEVATION : 2572 KB
SECTION : 9
RANGE : 29W COUNTY : GOVE
GAUGE SN# : 6233 RANGE : 4000
TICKET : 13235
LEASE : HANNA
GEOLOGIST : K ROBERTS
FORMATION : H-I
TOWNSHIP : 15S
STATE : KANSAS
CLOCK : 12

INTERVAL FROM : 3802 TO : 3874 TOTAL DEPTH : 3874

DEPTH OF SELECTIVE ZONE :

PACKER DEPTH : 3797 SIZE : 6.75

PACKER DEPTH : 3802 SIZE : 6.75

PACKER DEPTH : SIZE :

PACKER DEPTH : SIZE :

DRILLING CON. : WARRIOR RIG 2

MUD TYPE : CHEMICAL

VISCOSITY : 53

WEIGHT : 9.2

WATER LOSS (CC) : 11.2

CHLORIDES (PPM) : 4000

JARS-MAKE : -

SERIAL NUMBER :

DID WELL FLOW ? : NO

REVERSED OUT ? : NO

DRILL COLLAR LENGTH : 0 FT I.D. inch : 0.00

WEIGHT PIPE LENGTH : 0 FT I.D. inch : 0.00

DRILL PIPE LENGTH : 3782 FT I.D. inch : 3.80

TEST TOOL LENGTH : 20 FT TOOL SIZE : 5.50

ANCHOR LENGTH : 72 FT ANCHOR SIZE : 5.50

SURFACE CHOKE SIZE : .75 IN BOTTOM CHOKE SIZE : .75

MAIN HOLE SIZE : 7.875 IN TOOL JOINT SIZE : 4.5 XH

BLOW COMMENT #1 : INITIAL FLOW-WEAK STEADY BLOW-1/4" IN WATER.

BLOW COMMENT #2 : FINAL FLOW-WEAK STEADY BLOW-TOP OF WATER.

BLOW COMMENT #3 :

BLOW COMMENT #4 :

RECOVERED : 36 FT OF: MUD / WITH FEW OIL SPOTS
(OIL LESS THAN 1%)

CHLORIDES: 6000 PPM

Total Barrels Fluid = 0.50
Total Fluid Prod Rate = 8.08 BFPD
Indicated Wtr Rate = 0.90 BWPD

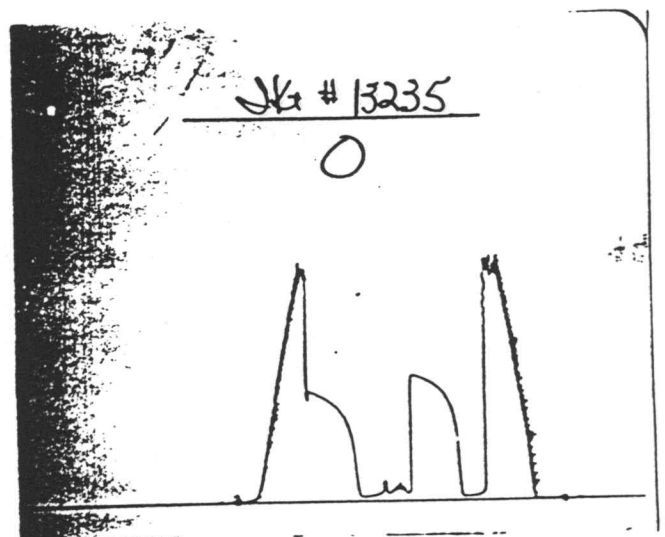
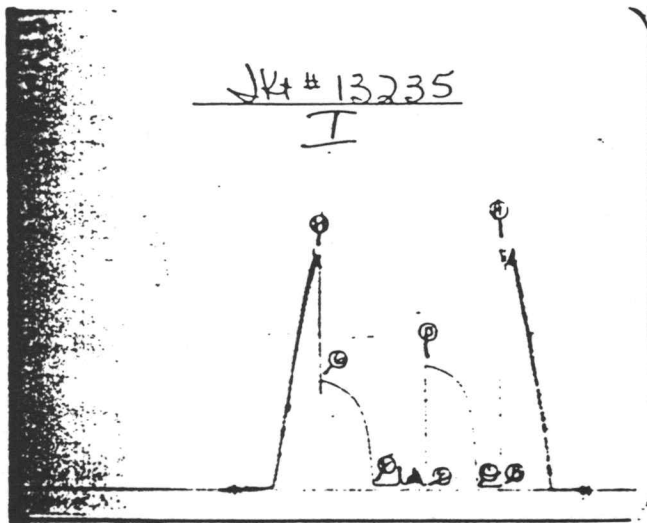
REMARK 1 :
REMARK 2 :
REMARK 3 :
REMARK 4 :

SET PACKER(S) : 1:50 PM
WELL TEMPERATURE : 122

TIME STARTED OFF BOTTOM : 5:20 PM

INITIAL HYDROSTATIC PRESSURE
INITIAL FLOW PERIOD MIN: 30
INITIAL CLOSED IN PERIOD MIN: 63
FINAL FLOW PERIOD MIN: 60
FINAL CLOSED IN PERIOD MIN: 63
FINAL HYDROSTATIC PRESSURE

(A) 1890
(B) 28 PSI TO (C) : 28
(D) 1020
(E) 36 PSI TO (F) : 39
(G) 902
(H) 1859



WESTERN TESTING CO. INC.
WICHITA-KANSAS

Pressure Transient Report

COMPANY : ENERGY EXPLORATION INC.
RIG : GOVE-KANSAS
FIELD : HANNA
WELL : #1
DATE : 8-24-88
GAUGE NO : 6233

OPERATIONAL COMMENTS

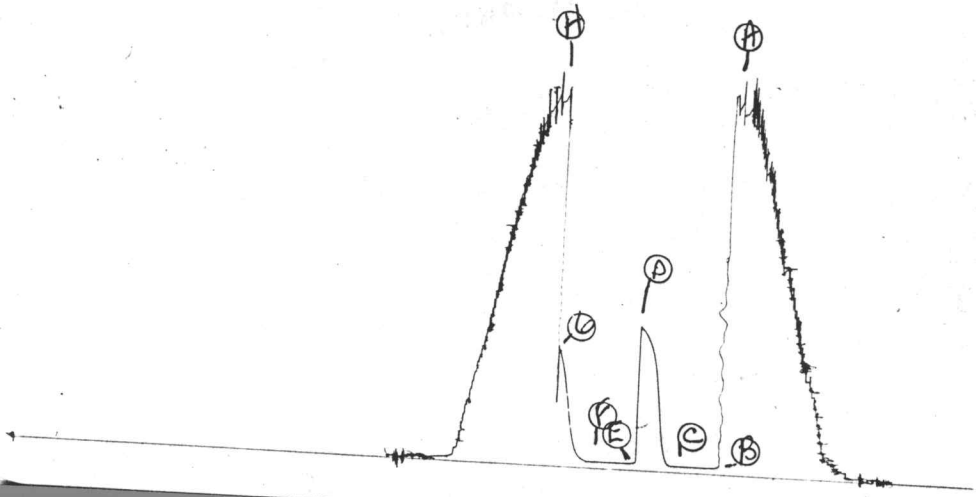
COMPANY : ENERGY EXPLORATION INC.
 WELL : #1
 GAUGE # : 6233
 DATE : 24/ 8/88

FIELD : MANNA
 JOB # : 13235
 DEPTH : 3874
 TEST :

DATA No.	REAL TIME HR:MN:SS	ELAPSE TIME DELTA HOURS	PRESSURE PSIG	TEMP DEG F	DELTA P Pi-P(i-1)
INITIAL FLOW					
2	1:50: 0	0.000	28.000	122.00	0.000
3	1:54:59	0.083	28.000	122.00	0.000
4	2: 0: 0	0.167	28.000	122.00	0.000
5	2: 5: 0	0.250	28.000	122.00	0.000
6	2: 9:59	0.333	28.000	122.00	0.000
7	2:15: 0	0.417	28.000	122.00	0.000
8	2:20: 0	0.500	28.000	122.00	0.000
INITIAL SHUT-IN					
9	2:23: 0	0.550	280.000	122.00	252.000
10	2:26: 0	0.600	477.000	122.00	197.000
11	2:29: 0	0.650	607.000	122.00	130.000
12	2:32: 0	0.700	700.000	122.00	93.000
13	2:35: 0	0.750	761.000	122.00	61.000
14	2:38: 0	0.800	814.000	122.00	53.000
15	2:41: 0	0.850	848.000	122.00	34.000
16	2:44: 0	0.900	878.000	122.00	30.000
17	2:47: 0	0.950	900.000	122.00	22.000
18	2:50: 0	1.000	918.000	122.00	18.000
19	2:53: 0	1.050	936.000	122.00	18.000
20	2:56: 0	1.100	950.000	122.00	14.000
21	2:59: 0	1.150	961.000	122.00	11.000
22	3: 2: 0	1.200	973.000	122.00	12.000
23	3: 5: 0	1.250	982.000	122.00	9.000
24	3: 8: 0	1.300	990.000	122.00	8.000
25	3:11: 0	1.350	998.000	122.00	8.000
26	3:14: 0	1.400	1005.000	122.00	7.000
27	3:17: 0	1.450	1009.000	122.00	4.000
28	3:20: 0	1.500	1015.000	122.00	6.000
29	3:23: 0	1.550	1020.000	122.00	5.000
FINAL FLOW * SLIGHT PLUGGING					
30	3:24: 0	1.567	36.000	122.00	-984.000
31	3:27:59	1.633	36.000	122.00	0.000
32	3:33: 0	1.717	36.000	122.00	0.000
33	3:38: 0	1.800	36.000	122.00	0.000
34	3:42:59	1.883	36.000	122.00	0.000
35	3:48: 0	1.967	36.000	122.00	0.000
36	3:53: 0	2.050	36.000	122.00	0.000
37	3:57:59	2.133	37.000	122.00	1.000
38	4: 3: 0	2.217	37.000	122.00	0.000
39	4: 8: 0	2.300	38.000	122.00	1.000
40	4:12:59	2.383	38.000	122.00	0.000
41	4:18: 0	2.467	39.000	122.00	1.000
42	4:23: 0	2.550	39.000	122.00	0.000
FINAL SHUT-IN					
43	4:26: 0	2.600	203.000	122.00	164.000
44	4:28:59	2.650	369.000	122.00	166.000
45	4:32: 0	2.700	491.000	122.00	122.000
46	4:35: 0	2.750	575.000	122.00	84.000
47	4:38: 0	2.800	639.000	122.00	64.000
48	4:41: 0	2.850	684.000	122.00	45.000

6233

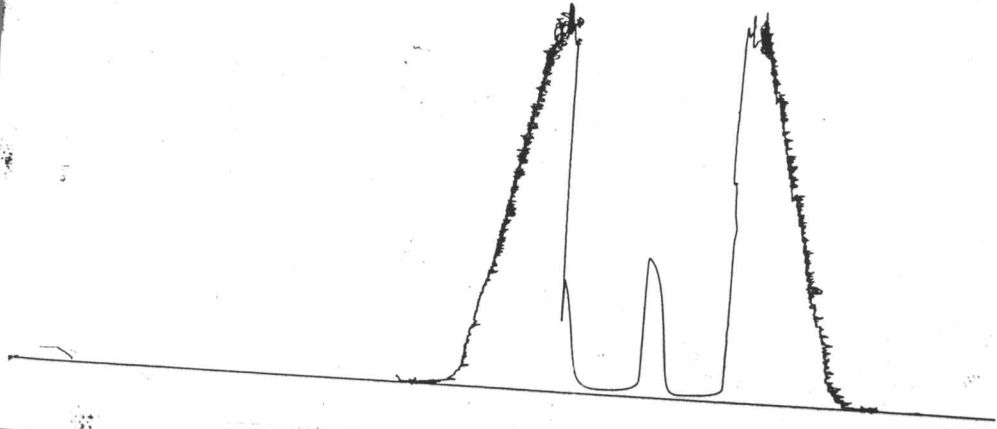
2Kt # 13236
I



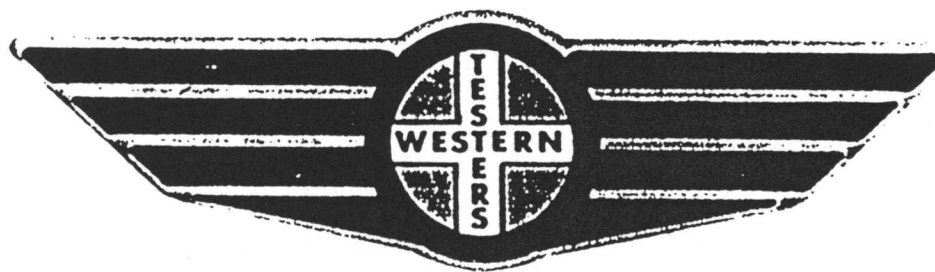
13400

JK # 13236

0



FORMATION TEST REPORT



Home Office:

Wichita, Kansas 67201

P.O. Box 1599

Phone (316) 262-5861

WESTERN TESTING CO. INC.
SUBSURFACE PRESSURE SURVEY

DATE : 8-25-88 TICKET : 13236
CUSTOMER : ENERGY EXPLORATION INC. LEASE : HANNA
WELL : #1 TEST: 3 GEOLOGIST : K ROBERTS
ELEVATION : 2572 KB FORMATION : J
SECTION : 9 TOWNSHIP : 15S
RANGE : 29W COUNTY : GOVE STATE : KANSAS
GAUGE SN# : 6233 RANGE : 4000 CLOCK : 12

INTERVAL FROM : 3874 TO : 3894 TOTAL DEPTH : 3894
DEPTH OF SELECTIVE ZONE :
PACKER DEPTH : 3869 SIZE : 6.75
PACKER DEPTH : 3874 SIZE : 6.75
PACKER DEPTH : SIZE :
PACKER DEPTH : SIZE :

DRILLING CON. : WARRIOR RIG 2
MUD TYPE : CHEMICAL VISCOSITY : 53
WEIGHT : 9.2 WATER LOSS (CC) : 11.2
CHLORIDES (PPM) : 4000
JARS-MAKE : - SERIAL NUMBER :
DID WELL FLOW ? : NO REVERSED OUT ? : NO

DRILL COLLAR LENGTH : 0 FT I.D. inch : 0.00
WEIGHT PIPE LENGTH : 0 FT I.D. inch : 0.00
DRILL PIPE LENGTH : 3854 FT I.D. inch : 3.80
TEST TOOL LENGTH : 20 FT TOOL SIZE : 5.50
ANCHOR LENGTH : 20 FT ANCHOR SIZE : 5.50
SURFACE CHOKE SIZE : .75 IN BOTTOM CHOKE SIZE : .75
MAIN HOLE SIZE : 7.875 IN TOOL JOINT SIZE : 4.5 XH

BLOW COMMENT #1 : INITIAL FLOW-WEAK BLOW-DIED IN 20 MINUTES.
BLOW COMMENT #2 : FINAL FLOW-VERY WEAK BLOW FOR 5 MINUTES & DIED.
BLOW COMMENT #3 :
BLOW COMMENT #4 :

RECOVERED : 15 FT OF: OIL SPOTTED MUD
1% OIL-99% MUD

CHLORIDES: 4000 PPM

Total Barrels Fluid = 0.21
Total Fluid Prod Rate = 5.05 BFPD
Indicated Oil Rate = 0.50 BOPD
Indicated Wtr Rate = 0.50 BWPD

REMARK 1 :
REMARK 2 :
REMARK 3 :
REMARK 4 :

SET PACKER(S) : 3:35 AM

TIME STARTED OFF BOTTOM : 5:35 AM

WELL TEMPERATURE : 120

INITIAL HYDROSTATIC PRESSURE

(A) 1974

INITIAL FLOW PERIOD MIN: 30

(B) 32 PSI TO (C) : 32

INITIAL CLOSED IN PERIOD MIN: 33

(D) 762

FINAL FLOW PERIOD MIN: 30

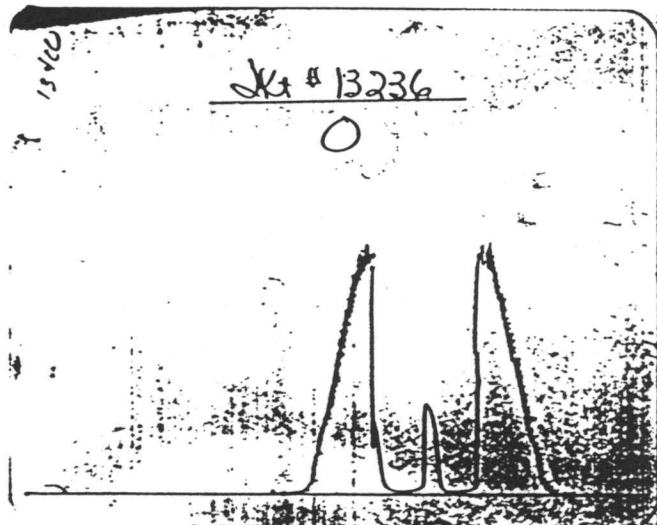
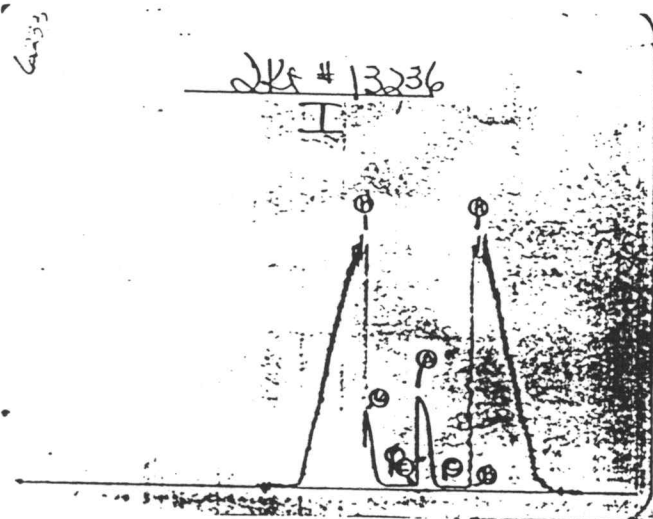
(E) 35 PSI TO (F) : 35

FINAL CLOSED IN PERIOD MIN: 33

(G) 625

FINAL HYDROSTATIC PRESSURE

(H) 1928



WESTERN TESTING CO. INC.
WICHITA-KANSAS

Pressure Transient Report

COMPANY : ENERGY EXPLORATION INC.
RIG : GOVE-KANSAS
FIELD : HANNA
WELL : #1
DATE : 8-25-88
GAUGE NO : 6233

OPERATIONAL COMMENTS

COMPANY : ENERGY EXPLORATION INC.
 WELL : #1
 GAUGE # : 6233
 DATE : 25/ 8/88

FIELD : HANNA
 JOB # : 13236
 DEPTH : 3894
 TEST :

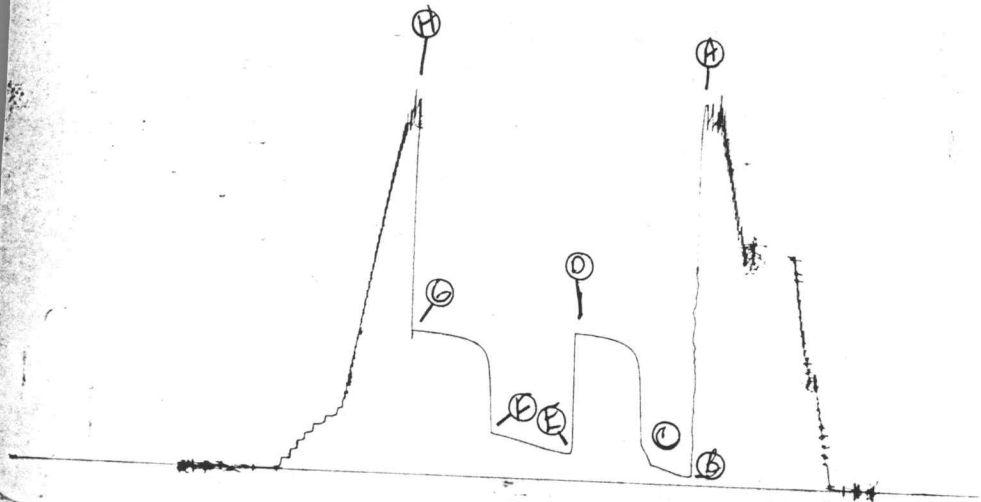
DATA No.	REAL TIME HR:MN:SS	ELAPSE TIME DELTA HOURS	PRESSURE PSIG	TEMP DEG F	DELTA P Pi-P(i-1)
INITIAL FLOW					
2	3:35: 0	0.000	32.000	120.00	0.000
3	3:39:59	0.083	32.000	120.00	0.000
4	3:45: 0	0.167	32.000	120.00	0.000
5	3:50: 0	0.250	32.000	120.00	0.000
6	3:54:59	0.333	32.000	120.00	0.000
7	4: 0: 0	0.417	32.000	120.00	0.000
8	4: 5: 0	0.500	32.000	120.00	0.000
INITIAL SHUT-IN					
9	4: 8: 0	0.550	32.000	120.00	0.000
10	4:11: 0	0.600	32.000	120.00	0.000
11	4:14: 0	0.650	42.000	120.00	10.000
12	4:17: 0	0.700	107.000	120.00	65.000
13	4:20: 0	0.750	235.000	120.00	128.000
14	4:23: 0	0.800	410.000	120.00	175.000
15	4:26: 0	0.850	555.000	120.00	145.000
16	4:29: 0	0.900	645.000	120.00	90.000
17	4:32: 0	0.950	697.000	120.00	52.000
18	4:35: 0	1.000	731.000	120.00	34.000
19	4:38: 0	1.050	762.000	120.00	31.000
FINAL FLOW					
20	4:39: 0	1.067	35.000	120.00	-727.000
21	4:42:59	1.133	35.000	120.00	0.000
22	4:48: 0	1.217	35.000	120.00	0.000
23	4:53: 0	1.300	35.000	120.00	0.000
24	4:57:59	1.383	35.000	120.00	0.000
25	5: 3: 0	1.467	35.000	120.00	0.000
26	5: 8: 0	1.550	35.000	120.00	0.000
FINAL SHUT-IN					
27	5:11: 0	1.600	35.000	120.00	0.000
28	5:14: 0	1.650	35.000	120.00	0.000
29	5:17: 0	1.700	38.000	120.00	3.000
30	5:20: 0	1.750	50.000	120.00	12.000
31	5:23: 0	1.800	77.000	120.00	27.000
32	5:26: 0	1.850	140.000	120.00	63.000
33	5:29: 0	1.900	252.000	120.00	112.000
34	5:32: 0	1.950	382.000	120.00	130.000
35	5:35: 0	2.000	501.000	120.00	119.000
36	5:38: 0	2.050	589.000	120.00	88.000
37	5:41: 0	2.100	625.000	120.00	36.000

WESTERN TESTING CO. INC.

#6233

Wt # 13237

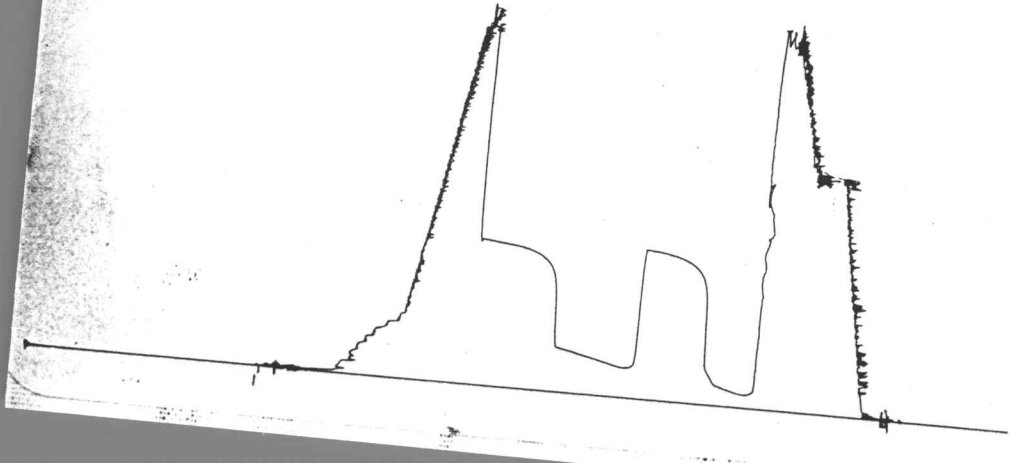
I



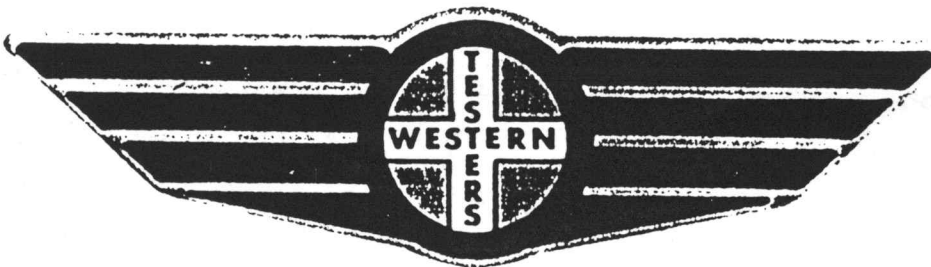
#13400

JK # 13237

0



FORMATION TEST REPORT



Home Office:

Wichita, Kansas 67201

P.O. Box 1599

Phone (316) 262-5861

WESTERN TESTING CO. INC.
SUBSURFACE PRESSURE SURVEY

DATE : 8-25-88
CUSTOMER : ENERGY EXPLORATION INC.
WELL : #1 TEST: 4
ELEVATION : 2572 KB
SECTION : 9
RANGE : 29W COUNTY : GOVE
GAUGE SN# : 6233 RANGE : 4000
TICKET : 13237
LEASE : HANNA
GEOLOGIST : K ROBERTS
FORMATION : K
TOWNSHIP : 15S
STATE : KANSAS
CLOCK : 12

INTERVAL FROM : 3900 TO : 3925 TOTAL DEPTH : 3925
DEPTH OF SELECTIVE ZONE :
PACKER DEPTH : 3895 SIZE : 6.75
PACKER DEPTH : 3900 SIZE : 6.75
PACKER DEPTH : SIZE :
PACKER DEPTH : SIZE :

DRILLING CON. : WARRIOR RIG 2
MUD TYPE : CHEMICAL VISCOSITY : 48
WEIGHT : 9.1 WATER LOSS (CC) : 11.2
CHLORIDES (PPM) : 4000
JARS-MAKE : - SERIAL NUMBER :
DID WELL FLOW ? : NO REVERSED OUT ? : NO

DRILL COLLAR LENGTH : 0 FT I.D. inch : 0.00
WEIGHT PIPE LENGTH : 0 FT I.D. inch : 0.00
DRILL PIPE LENGTH : 3880 FT I.D. inch : 3.80
TEST TOOL LENGTH : 20 FT TOOL SIZE : 5.50
ANCHOR LENGTH : 25 FT ANCHOR SIZE : 5.50
SURFACE CHOKE SIZE : .75 IN BOTTOM CHOKE SIZE : .75
MAIN HOLE SIZE : 7.875 IN TOOL JOINT SIZE : 4.5 XH

BLOW COMMENT #1 : INITIAL FLOW-STRONG BLOW-BOTTOM OF BUCKET IN 5 MINUTES
BLOW COMMENT #2 : FINAL FLOW-STRONG BLOW-BOTTOM OF BUCKET.
BLOW COMMENT #3 :
BLOW COMMENT #4 :

RECOVERED : 442 FT OF: CLEAN GASSY OIL
 GRAVITY 37 CORRECTED TO 60 DEG.F.
 RECOVERED : 92 FT OF: GASSY MUD CUT OIL
 40% OIL-25% GAS-35% MUD
 RECOVERED : 92 FT OF: GASSY MUD CUT OIL
 90% OIL-5% GAS-5% MUD

CHLORIDES: 4000 PPM

Total Barrels Fluid = 8.78
 Total Fluid Prod Rate = 140.49 BFPD
 Indicated Oil Rate = 126.12 BOPD
 Indicated Wtr Rate = 0.90 BWPD
 Corrected Oil Rate = 118.50 BOPD
 Corrected Wtr Rate = 0.84 BWPD

REMARK 1 :
 REMARK 2 : RECOVERED 2777 FEET OF GAS ABOVE FLUID.
 REMARK 3 :
 REMARK 4 :

SET PACKER(S) : 2:40 PM

TIME STARTED OFF BOTTOM : 6:10 PM

WELL TEMPERATURE : 122

INITIAL HYDROSTATIC PRESSURE

(A) 1974

INITIAL FLOW PERIOD MIN: 30

(B) 46 PSI TO (C) : 101

INITIAL CLOSED IN PERIOD MIN: 60

(D) 777

FINAL FLOW PERIOD MIN: 60

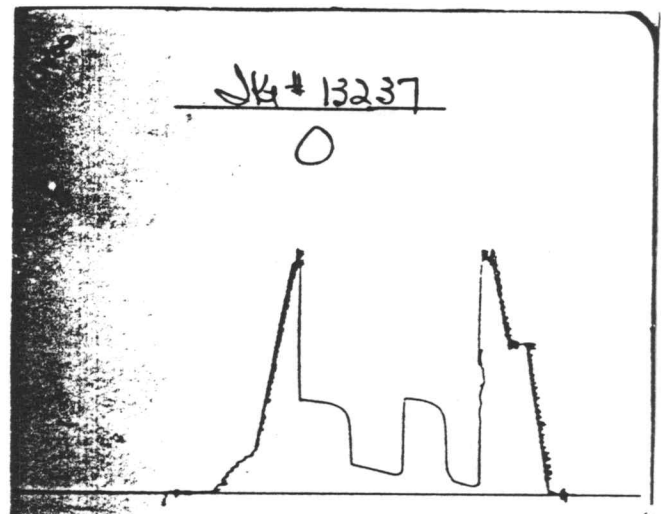
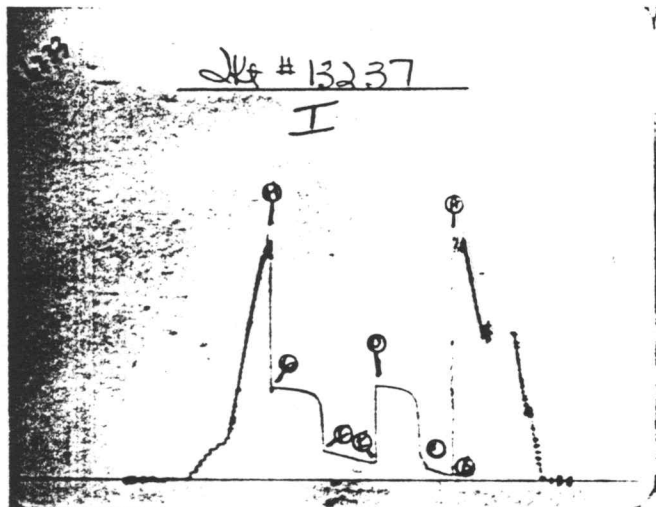
(E) 146 PSI TO (F) : 238

FINAL CLOSED IN PERIOD MIN: 60

(G) 759

FINAL HYDROSTATIC PRESSURE

(H) 1940



WESTERN TESTING CO. INC.
WICHITA-KANSAS

Pressure Transient Report

COMPANY : ENERGY EXPLORATION INC.
RIG : GOVE-KANSAS
FIELD : HANNA
WELL : #1
DATE : 8-25-88
GAUGE NO : 6233

OPERATIONAL COMMENTS

RECOVERED 2777 FEET OF GAS ABOVE FLUID.

COMPANY : ENERGY EXPLORATION INC.
 WELL : #1
 GAUGE # : 6233
 DATE : 25/ 8/88

FIELD : HANNA
 JOB # : 13237
 DEPTH : 3925
 TEST :

DATA No.	REAL TIME HR:MN:SS	ELAPSE TIME DELTA HOURS	PRESSURE PSIG	TEMP DEG F	DELTA P $P_i - P_{(i-1)}$
INITIAL FLOW					
2	2:40: 0	0.000	46.000	122.00	0.000
3	2:44:59	0.083	47.000	122.00	1.000
4	2:50: 0	0.167	53.000	122.00	6.000
5	2:55: 0	0.250	66.000	122.00	13.000
6	2:59:59	0.333	77.000	122.00	11.000
7	3: 5: 0	0.417	89.000	122.00	12.000
8	3:10: 0	0.500	101.000	122.00	12.000
INITIAL SHUT-IN					
9	3:13: 0	0.550	148.000	122.00	47.000
10	3:16: 0	0.600	183.000	122.00	35.000
11	3:19: 0	0.650	378.000	122.00	195.000
12	3:22: 0	0.700	613.000	122.00	235.000
13	3:25: 0	0.750	679.000	122.00	66.000
14	3:28: 0	0.800	706.000	122.00	27.000
15	3:31: 0	0.850	721.000	122.00	15.000
16	3:34: 0	0.900	733.000	122.00	12.000
17	3:37: 0	0.950	743.000	122.00	10.000
18	3:40: 0	1.000	749.000	122.00	6.000
19	3:43: 0	1.050	754.000	122.00	5.000
20	3:46: 0	1.100	759.000	122.00	5.000
21	3:49: 0	1.150	763.000	122.00	4.000
22	3:52: 0	1.200	766.000	122.00	3.000
23	3:55: 0	1.250	769.000	122.00	3.000
24	3:58: 0	1.300	771.000	122.00	2.000
25	4: 1: 0	1.350	773.000	122.00	2.000
26	4: 4: 0	1.400	775.000	122.00	2.000
27	4: 7: 0	1.450	776.000	122.00	1.000
28	4:10: 0	1.500	777.000	122.00	1.000
FINAL FLOW					
29	4:11: 0	1.517	146.000	122.00	-631.000
30	4:14:59	1.583	146.000	122.00	0.000
31	4:20: 0	1.667	152.000	122.00	6.000
32	4:25: 0	1.750	159.000	122.00	7.000
33	4:29:59	1.833	166.000	122.00	7.000
34	4:35: 0	1.917	175.000	122.00	9.000
35	4:40: 0	2.000	185.000	122.00	10.000
36	4:44:59	2.083	195.000	122.00	10.000
37	4:50: 0	2.167	204.000	122.00	9.000
38	4:55: 0	2.250	213.000	122.00	9.000
39	4:59:59	2.333	223.000	122.00	10.000
40	5: 5: 0	2.417	231.000	122.00	8.000
41	5:10: 0	2.500	238.000	122.00	7.000
FINAL SHUT-IN					
42	5:13: 0	2.550	549.000	122.00	311.000
43	5:16: 0	2.600	647.000	122.00	98.000
44	5:19: 0	2.650	677.000	122.00	30.000
45	5:22: 0	2.700	696.000	122.00	19.000
46	5:25: 0	2.750	709.000	122.00	13.000
47	5:28: 0	2.800	717.000	122.00	8.000
48	5:31: 0	2.850	725.000	122.00	8.000

COMPANY : ENERGY EXPLORATION INC.
WELL : #1
GAUGE # : 6233
DATE : 25/ 8/88

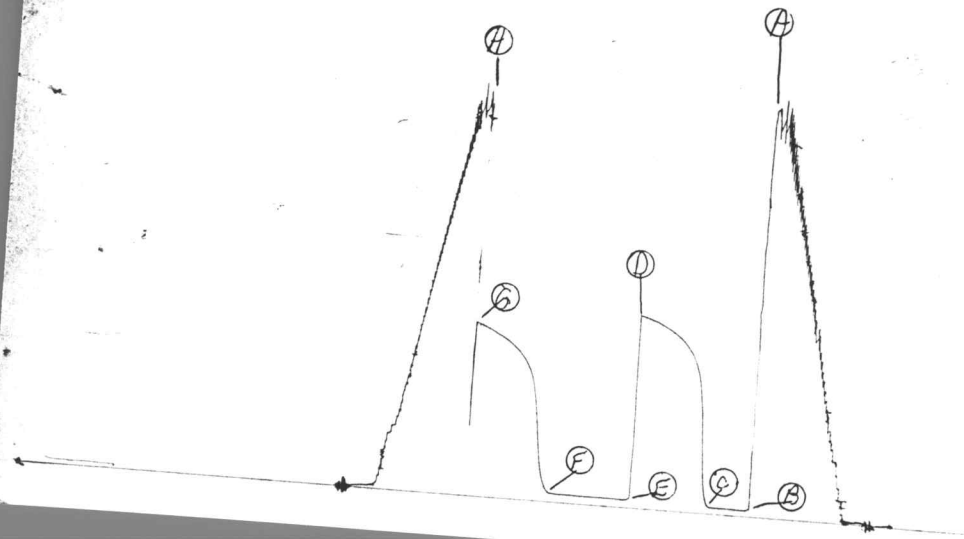
FIELD : HANNA
JOB # : 13237
DEPTH : 3925
TEST :

DATA No.	REAL TIME HR:MN:SS	ELAPSE TIME DELTA HOURS	PRESSURE PSIG	TEMP DEG F	DELTA P Pi-P(i-1)
49	5:34: 0	2.900	732.000	122.00	7.000
50	5:37: 0	2.950	735.000	122.00	3.000
51	5:40: 0	3.000	739.000	122.00	4.000
52	5:43: 0	3.050	742.000	122.00	3.000
53	5:46: 0	3.100	745.000	122.00	3.000
54	5:49: 0	3.150	748.000	122.00	3.000
55	5:52: 0	3.200	750.000	122.00	2.000
56	5:55: 0	3.250	752.000	122.00	2.000
57	5:58: 0	3.300	754.000	122.00	2.000
58	6: 1: 0	3.350	756.000	122.00	2.000
59	6: 4: 0	3.400	757.000	122.00	1.000
60	6: 7: 0	3.450	758.000	122.00	1.000
61	6:10: 0	3.500	759.000	122.00	1.000

WESTERN TESTING CO. INC.

623

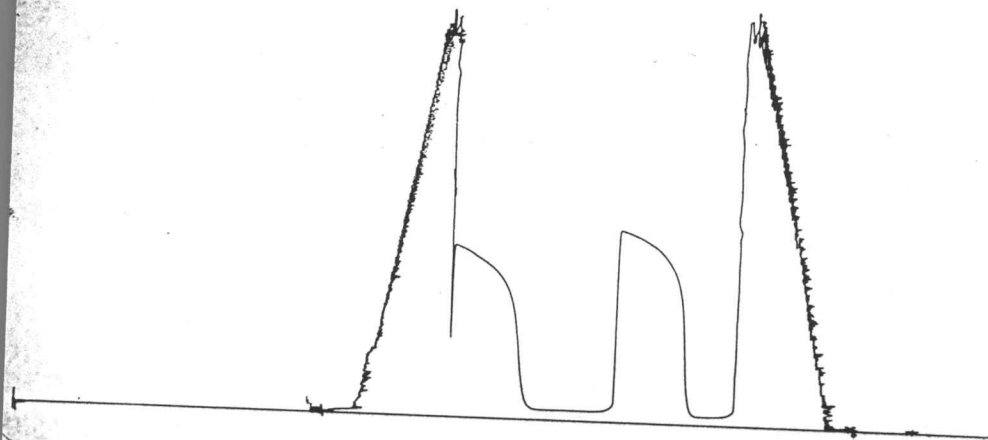
AT 13238
I



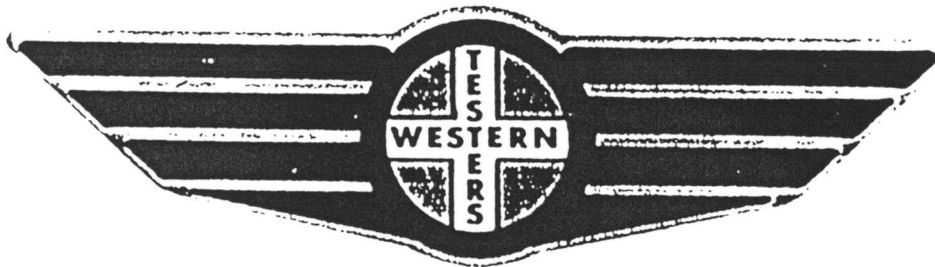
13960

K-13238

0



FORMATION TEST REPORT



Home Office:

Wichita, Kansas 67201

P.O. Box 1599

Phone (316) 262-5861

COMPANY ENERGY EXPLORATION, INC. LEASE & WELL NO. HANNA #1 SEC. 9 TWP. 15S RGE. 29W TEST NO. 5 DATE 8/26/88

WESTERN TESTING CO. INC.
SUBSURFACE PRESSURE SURVEY

DATE : 8-26-88 TICKET : 13238
CUSTOMER : ENERGY EXPLORATION INC. LEASE : HANNA
WELL : #1 TEST: 5 GEOLOGIST : K ROBERTS
ELEVATION : 2572 KB FORMATION : PAWNEE
SECTION : 9 TOWNSHIP : 15S
RANGE : 29W COUNTY : GOVE STATE : KANSAS
GAUGE SN# : 6233 RANGE : 4000 CLOCK : 12

INTERVAL FROM : 4080 TO : 4108 TOTAL DEPTH : 4108
DEPTH OF SELECTIVE ZONE :
PACKER DEPTH : 4077 SIZE : 6.75
PACKER DEPTH : 4082 SIZE : 6.75
PACKER DEPTH : SIZE :
PACKER DEPTH : SIZE :

DRILLING CON. : WARRIOR RIG 2
MUD TYPE : CHEMICAL VISCOSITY : 50
WEIGHT : 9.1 WATER LOSS (CC) : 11.2
CHLORIDES (PPM) : 4000
JARS-MAKE : NO SERIAL NUMBER :
DID WELL FLOW ? : NO REVERSED OUT ? : NO

DRILL COLLAR LENGTH : 0 FT I.D. inch : 0.00
WEIGHT PIPE LENGTH : 0 FT I.D. inch : 0.00
DRILL PIPE LENGTH : 4060 FT I.D. inch : 3.80
TEST TOOL LENGTH : 20 FT TOOL SIZE : 5.50
ANCHOR LENGTH : 28 FT ANCHOR SIZE : 5.50
SURFACE CHOKE SIZE : .75 IN BOTTOM CHOKE SIZE : .75
MAIN HOLE SIZE : 7.875 IN TOOL JOINT SIZE : 4.5 XH

BLOW COMMENT #1 : INITIAL FLOW-WEAK BLOW INCREASING TO 3" IN WATER.
BLOW COMMENT #2 : FINAL FLOW-WEAK BLOW-1" IN WATER.
BLOW COMMENT #3 :
BLOW COMMENT #4 :

RECOVERED : 2 FT OF: OIL
RECOVERED : 30 FT OF: OIL CUT MUD
20% OIL-80% MUD
RECOVERED : 30 FT OF: OIL CUT WATERY MUD
5% OIL-35% WATER-60% MUD

CHLORIDES: 20000 PPM

Total Barrels Fluid = 0.87
Total Fluid Prod Rate = 13.91 BFPD
Indicated Oil Rate = 2.24 BOPD
Indicated Wtr Rate = 3.37 BWPD
Corrected Oil Rate = 7.41 BOPD
Corrected Wtr Rate = 11.11 BWPD

REMARK 1 :
REMARK 2 :
REMARK 3 :
REMARK 4 :

SET PACKER(S) : 6:45 PM
WELL TEMPERATURE : 130
INITIAL HYDROSTATIC PRESSURE (A) 2125
INITIAL FLOW PERIOD MIN: 30 (B) 30 PSI TO (C) : 32
INITIAL CLOSED IN PERIOD MIN: 60 (D) 1008
FINAL FLOW PERIOD MIN: 60 (E) 42 PSI TO (F) : 42
FINAL CLOSED IN PERIOD MIN: 60 (G) 914
FINAL HYDROSTATIC PRESSURE (H) 2109
TIME STARTED OFF BOTTOM : 10:15 PM

WESTERN TESTING CO. INC.
WICHITA-KANSAS

Pressure Transient Report

COMPANY : ENERGY EXPLORATION INC.
RIG : GOVE-KANSAS
FIELD : HANNA
WELL : #1
DATE : 8-26-88
GAUGE NO : 6233

OPERATIONAL COMMENTS

COMPANY : ENERGY EXPLORATION INC.
 WELL : #1
 GAUGE # : 6233
 DATE : 26/ 8/88

FIELD : HANNA
 JOB # : 13238
 DEPTH : 4108
 TEST :

DATA No.	REAL TIME HR:MN:SS	ELAPSE TIME DELTA HOURS	PRESSURE PSIG	TEMP DEG F	DELTA P Pi-P(i-1)
INITIAL FLOW					
2	6:45: 0	0.000	30.000	130.00	0.000
3	6:49:59	0.083	30.000	130.00	0.000
4	6:55: 0	0.167	32.000	130.00	2.000
5	7: 0: 0	0.250	32.000	130.00	0.000
6	7: 4:59	0.333	32.000	130.00	0.000
7	7:10: 0	0.417	32.000	130.00	0.000
8	7:15: 0	0.500	32.000	130.00	0.000
INITIAL SHUT-IN					
9	7:18: 0	0.550	71.000	130.00	39.000
10	7:21: 0	0.600	224.000	130.00	153.000
11	7:24: 0	0.650	523.000	130.00	299.000
12	7:27: 0	0.700	696.000	130.00	173.000
13	7:30: 0	0.750	776.000	130.00	80.000
14	7:33: 0	0.800	819.000	130.00	43.000
15	7:36: 0	0.850	853.000	130.00	34.000
16	7:39: 0	0.900	882.000	130.00	29.000
17	7:42: 0	0.950	901.000	130.00	19.000
18	7:45: 0	1.000	918.000	130.00	17.000
19	7:48: 0	1.050	933.000	130.00	15.000
20	7:51: 0	1.100	947.000	130.00	14.000
21	7:54: 0	1.150	958.000	130.00	11.000
22	7:57: 0	1.200	969.000	130.00	11.000
23	8: 0: 0	1.250	979.000	130.00	10.000
24	8: 3: 0	1.300	986.000	130.00	7.000
25	8: 6: 0	1.350	993.000	130.00	7.000
26	8: 9: 0	1.400	1001.000	130.00	8.000
27	8:12: 0	1.450	1006.000	130.00	5.000
28	8:15: 0	1.500	1008.000	130.00	2.000
FINAL FLOW					
29	8:16: 0	1.517	42.000	130.00	-966.000
30	8:19:59	1.583	42.000	130.00	0.000
31	8:25: 0	1.667	42.000	130.00	0.000
32	8:30: 0	1.750	42.000	130.00	0.000
33	8:34:59	1.833	42.000	130.00	0.000
34	8:40: 0	1.917	42.000	130.00	0.000
35	8:45: 0	2.000	42.000	130.00	0.000
36	8:49:59	2.083	42.000	130.00	0.000
37	8:55: 0	2.167	42.000	130.00	0.000
38	9: 0: 0	2.250	42.000	130.00	0.000
39	9: 4:59	2.333	42.000	130.00	0.000
40	9:10: 0	2.417	42.000	130.00	0.000
41	9:15: 0	2.500	42.000	130.00	0.000
FINAL SHUT-IN					
42	9:18: 0	2.550	70.000	130.00	28.000
43	9:21: 0	2.600	138.000	130.00	68.000
44	9:24: 0	2.650	237.000	130.00	99.000
45	9:27: 0	2.700	439.000	130.00	202.000
46	9:30: 0	2.750	585.000	130.00	146.000
47	9:33: 0	2.800	673.000	130.00	88.000
48	9:36: 0	2.850	718.000	130.00	45.000

COMPANY : ENERGY EXPLORATION INC.
WELL : #1
GAUGE # : 6233
DATE : 26/ 8/88

FIELD : HANNA
JOB # : 13238
DEPTH : 4108
TEST :

DATA No.	REAL TIME HR:MN:SS	ELAPSE TIME DELTA HOURS	PRESSURE PSIG	TEMP DEG F	DELTA P Pi-P(i-1)
49	9:39: 0	2.900	750.000	130.00	32.000
50	9:42: 0	2.950	778.000	130.00	28.000
51	9:45: 0	3.000	797.000	130.00	19.000
52	9:48: 0	3.050	814.000	130.00	17.000
53	9:51: 0	3.100	829.000	130.00	15.000
54	9:54: 0	3.150	841.000	130.00	12.000
55	9:57: 0	3.200	853.000	130.00	12.000
56	10: 0: 0	3.250	865.000	130.00	12.000
57	10: 3: 0	3.300	876.000	130.00	11.000
58	10: 6: 0	3.350	888.000	130.00	12.000
59	10: 9: 0	3.400	896.000	130.00	8.000
60	10:12: 0	3.450	905.000	130.00	9.000
61	10:15: 0	3.500	914.000	130.00	9.000

WESTERN TESTING CO. INC.