

Sun Oil Well Cementing, Inc.

DRILL STEM TEST DATA

P.O. Box 169

Great Bend, Kansas 67530

Lease	Harper-Rude	Well No.	1	Date	11-4-80
County	Barton	Sec.	1	Twp.	16 Rng. 13
Company	L.G. Stephenson & Co.			Test No.	1
Contractor	Red Tiger Drilling			Zone Tested	Topeka
Charge To	L. G. Stephenson & Co.			Ticket #	4217
Approved By	Jim Spellman			Tester	Steve Jenkins

Initial Hydro Mud Press. 1534 P.S.I.

Initial Flow Press. 61 To 51 P.S.I. Initial Flow Period 30 Min.

Initial Shut-in Press. 636 P.S.I. Initial Shut-in 30 Min.

Final Flow Press. 61 To 51 P.S.I. Final Flow Period 30 Min.

Final Shut-in Press. 547 P.S.I. Final Shut-in 30 Min.

Final Hydro Mud Press. 1524 P.S.I. TIME TOOL OPEN 10:00 A.M.

Temperature

Mud Weight Viscosity 41

Fluid Loss

Interval Tested 2946 To 2980

Top Packer Depth 2941 Surface Choke Size

Bottom Packer Depth 2946 Bottom Choke Size 5/8

Total Depth 2980 Main Hole Size 7 7/8

Drill Pipe Size 4 1/2 x H Wt 4 1/2 x H Rubber Size 6 3/4

Drill Collar I.D. 2.25 Ft. Run None

Blow 1st opening weak blow decreasing to very weak blow (2" to 1/2")
2nd opening surface blow - died in 10 min.

Recovery 30' mud.

.....

.....

.....

.....

Sun Oil Well Cementing, Inc.

DRILL STEM TEST DATA

P.O. Box 169

Great Bend, Kansas 67530

Lease	Harper - Rude	Well No.	1	Date	11-5-80
County	Barton	Sec.	1	Twp.	16
		Rng.	13	Elevation	
Company	L. G. Stephenson & Co.			Test No.	2
Contractor	Red Tiger Drlg.			Zone Tested	Lansing
Charge To	L. G. Stephenson			Ticket #	4218
Approved By	James W. Spellman			Tester	Steve Jenkins

Initial Hydro Mud Press. 1656 P.S.I.

Initial Flow Press. 171 To 96 P.S.I. Initial Flow Period 45 Min.

Initial Shut-in Press. 231 P.S.I. Initial Shut-in 30 Min.

Final Flow Press. 107 To 85 P.S.I. Final Flow Period 45 Min.

Final Shut-in Press. 160 P.S.I. Final Shut-in 30 Min.

Final Hydro Mud Press. 1645 P.S.I. TIME TOOL OPEN 9:30 A.M.

Temperature

Mud Weight 10.0 Viscosity 42

Fluid Loss 22

Interval Tested 3105 To 3152

Top Packer Depth 3100 Surface Choke Size

Bottom Packer Depth 3105 Bottom Choke Size 5/8

Total Depth 3152 Main Hole Size 7 7/8

Drill Pipe Size 4 1/2 x H Wt 4 1/2 x H Rubber Size 6 3/4

Drill Collar I.D. 2.25 Ft. Run None

Blow 1st opening: weak blow increasing slightly (1" to 3")
2nd opening blow decreasing down to 1/2"

Recovery 60' slightly gas cut oil spotted mud.

.....

.....

.....

.....

Sun Oil Well Cementing, Inc.

DRILL STEM TEST DATA

P.O. Box 169

Great Bend, Kansas 67530

Lease	Harper - Rude	Well No.	1	Date	11-6-80
County	Barton	Sec.	1	Twp.	16
		Rng.	13	Elevation	
Company	L.G. Stephenson & Co.			Test No.	3
Contractor	Red Tiger Drlg.			Zone Tested	K.C.
Charge To	L. G. Stephenson & Co.			Ticket #	4219
Approved By	James W. Spellman			Tester	Steve Jenkins

Initial Hydro Mud Press. 1697 P.S.I.

Initial Flow Press. 51 To 41 P.S.I. Initial Flow Period 30 Min.

Initial Shut-in Press. 671 P.S.I. Initial Shut-in 30 Min.

Final Flow Press. 78 To 78 P.S.I. Final Flow Period 30 Min.

Final Shut-in Press. 688 P.S.I. Final Shut-in 30 Min.

Final Hydro Mud Press. 1687 P.S.I. TIME TOOL OPEN 12:15 A.M.

Temperature

Mud Weight Viscosity 48

Fluid Loss

Interval Tested 3152 To 3187

Top Packer Depth 3147 Surface Choke Size

Bottom Packer Depth 3152 Bottom Choke Size 5/8

Total Depth 3187 Main Hole Size 7 7/8

Drill Pipe Size 4½ x H Wt 4½ x H Rubber Size 6 3/4

Drill Collar I.D. 2.25 Ft. Run None

Blow 1st opening weak blow. 2nd opening weak blow (1")

Recovery 120' mud.

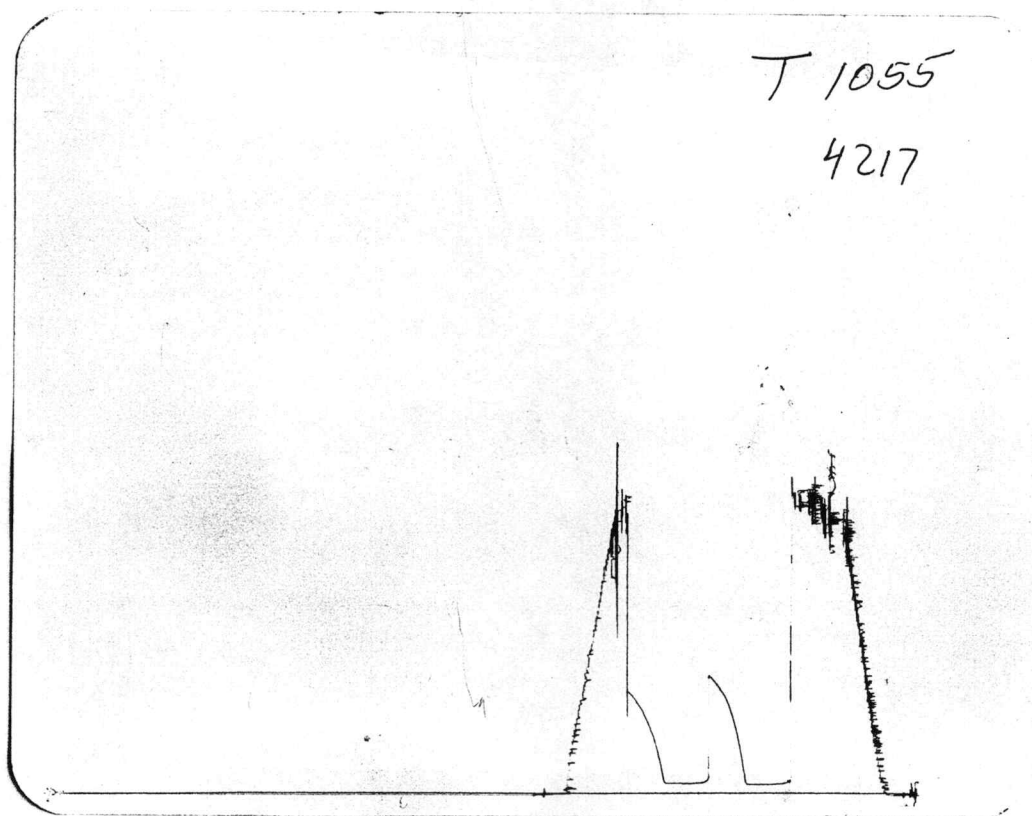
.....

.....

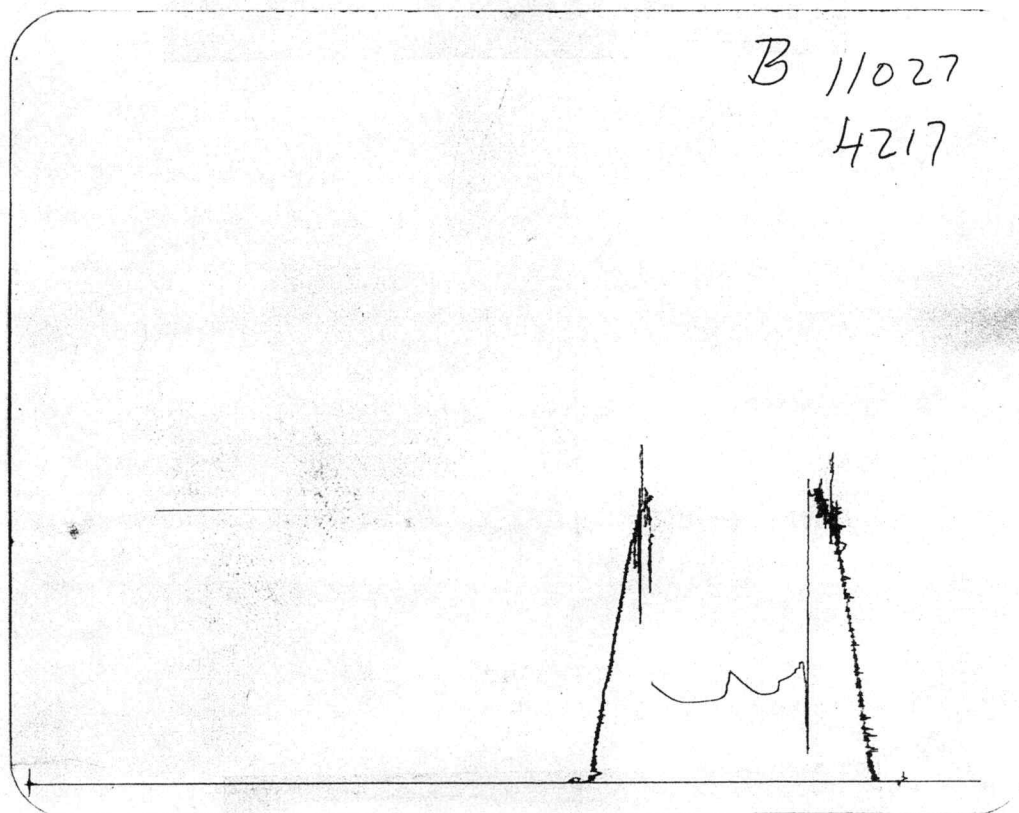
.....

.....

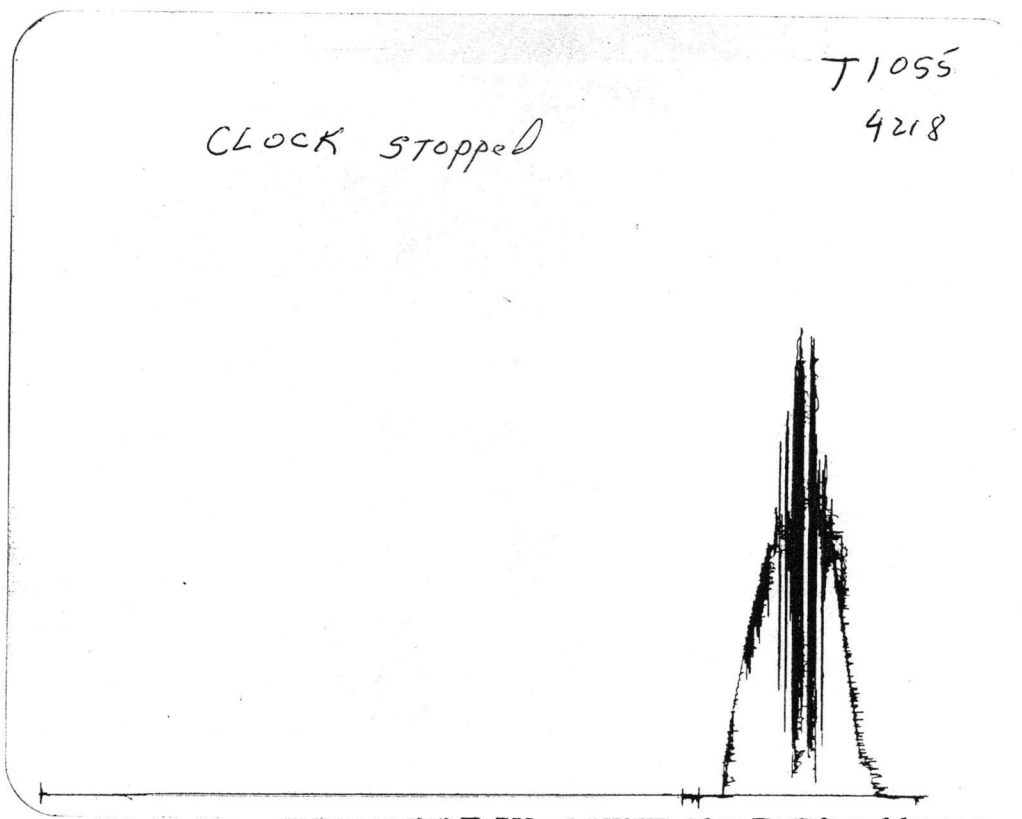
TOP



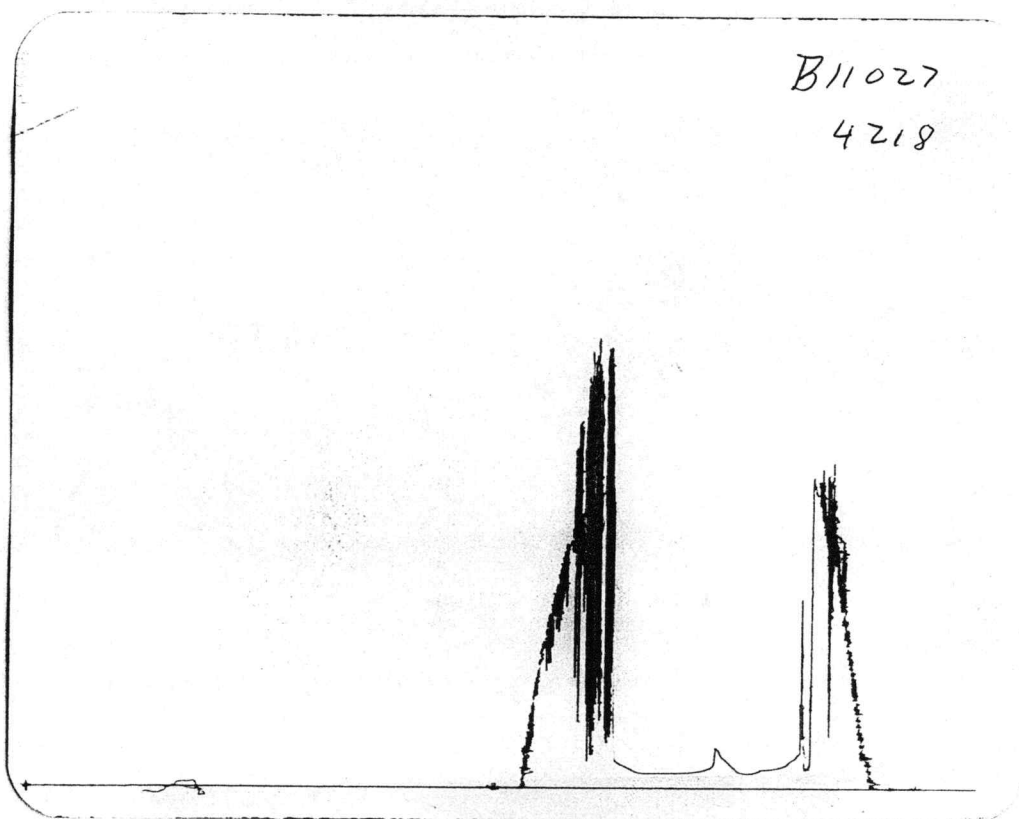
BOTTOM



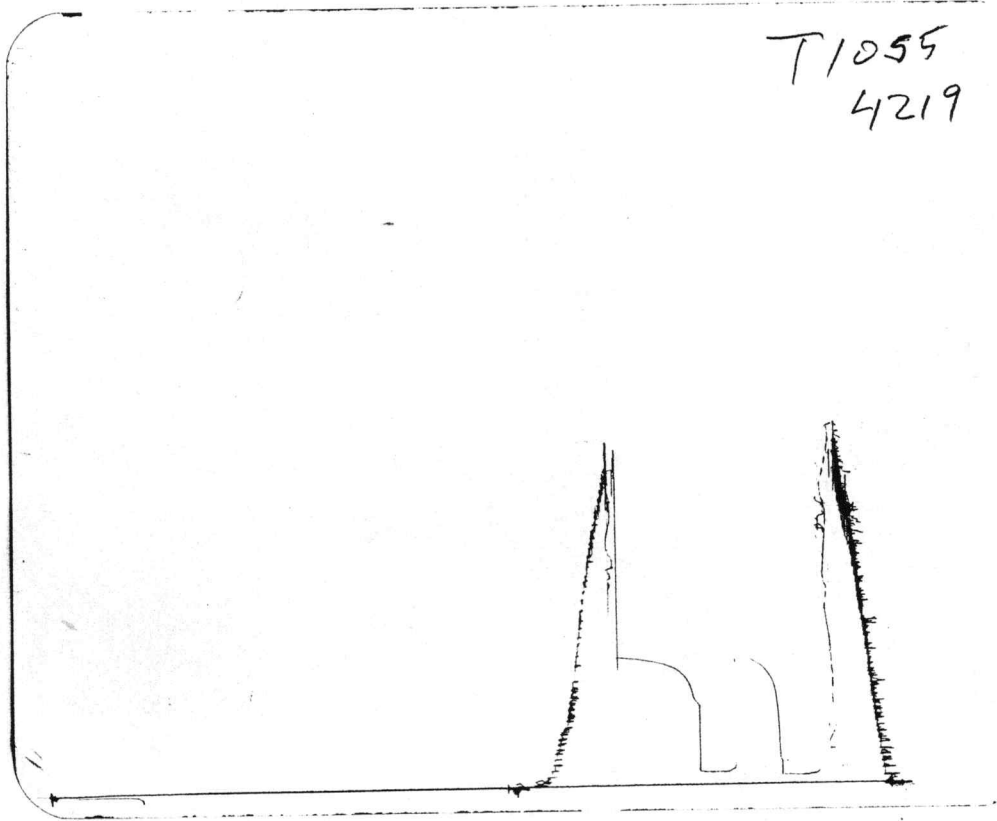
TOP



BOTTOM



TOP



BOTTOM

