



DIAMOND TESTING

P.O. Box 157
HOISINGTON, KANSAS 67544
(620) 653-7550 • (800) 542-7313
STC 21083.D 436

Company Reif Oil & Gas Co., LLC Lease & Well No. Bieberle Trust No. 1
Elevation 1914KB Formation Arbuckle Effective Pay -- Ft. Ticket No. J2239
Date 4-22-08 Sec. 11 Twp. 16S Range 12W County Barton State Kansas
Test Approved By Jim Musgrove Diamond Representative John C. Riedl

Formation Test No. 4 Interval Tested from 3,306 ft. to 3,328 ft. Total Depth 3,328 ft.
Packer Depth 3,301 ft. Size 6 3/4 in. Packer Depth -- ft. Size -- in.
Packer Depth 3,306 ft. Size 6 3/4 in. Packer Depth -- ft. Size -- in.
Depth of Selective Zone Set ft.

Top Recorder Depth (Inside) 3,309 ft. Recorder Number 21083 Cap. 5,000 psi
Bottom Recorder Depth (Outside) 3,325 ft. Recorder Number 11073 Cap. 4,000 psi
Below Straddle Recorder Depth ft. Recorder Number Cap. psi

Drilling Contractor Royal Drilling - Rig 1 Drill Collar Length -- ft. I.D. -- in.
Mud Type Chemical Viscosity 45 Weight Pipe Length -- ft. I.D. -- in.
Weight 9.3 Water Loss 8.8 cc. Drill Pipe Length 3,286 ft. I.D. 3 1/2 in.
Chlorides 8,500 P.P.M. Test Tool Length 20 ft. Tool Size 3 1/2 - IF in.
Jars: Make Sterling Serial Number Not Run Anchor Length 22 ft. Size 4 1/2 - FH in.
Did Well Flow? No Reversed Out No Surface Choke Size 1 in. Bottom Choke Size 5/8 in.
Main Hole Size 7 7/8 in. Tool Joint Size 4 1/2 - XH in.

Blow: 1st Open: Strong blow. Off bottom of bucket in 3 mins. Fair, 3 in., blow back during shut-in.
2nd Open: Strong blow. Off bottom of bucket in 4 mins. No blow back during shut-in.

Recovered 250 ft. of gas in pipe
Recovered 555 ft. of clean gassy oil with some mud cut in bottom 100' = 7.881000 bbls. (Gravity: 36 @ 60°)
Recovered 555 ft. of TOTAL FLUID = 7.881000 bbls.
Recovered ft. of
Recovered ft. of

Remarks

Time Set Packer(s) 6:05 ~~P.M.~~ ^{A.M.} Time Started Off Bottom 7:30 ~~P.M.~~ ^{A.M.} Maximum Temperature 113°
Initial Hydrostatic Pressure (A) 1583 P.S.I.
Initial Flow Period Minutes 15 (B) 18 P.S.I. to (C) 100 P.S.I.
Initial Closed In Period Minutes 20 (D) 970 P.S.I.
Final Flow Period Minutes 20 (E) 104 P.S.I. to (F) 210 P.S.I.
Final Closed In Period Minutes 30 (G) 970 P.S.I.
Final Hydrostatic Pressure (H) 1558 P.S.I.

GENERAL INFORMATION

Client Information:

Company: REIF OIL+GAS LLC

Contact: DON REIF

Phone: Fax: e-mail:

Site Information:

Contact: JIM MUSGROVE

Phone: Fax: e-mail:

Well Information:

Name: BIEBERLE TRUST #1

Operator: REIF OIL+GAS LLC

Location-Downhole: DST #4 3306 TO 3328

Location-Surface: S11/16S/12W BARTON COUNTY

Test Information:

Company: DIAMOND TESTING

Representative: JOHN RIEDL

Supervisor: JIM MUSGROVE

Test Type: CONVENTIONAL Job Number: D436

Test Unit: 2

Start Date: 2008/04/22 Start Time: 04:40:00

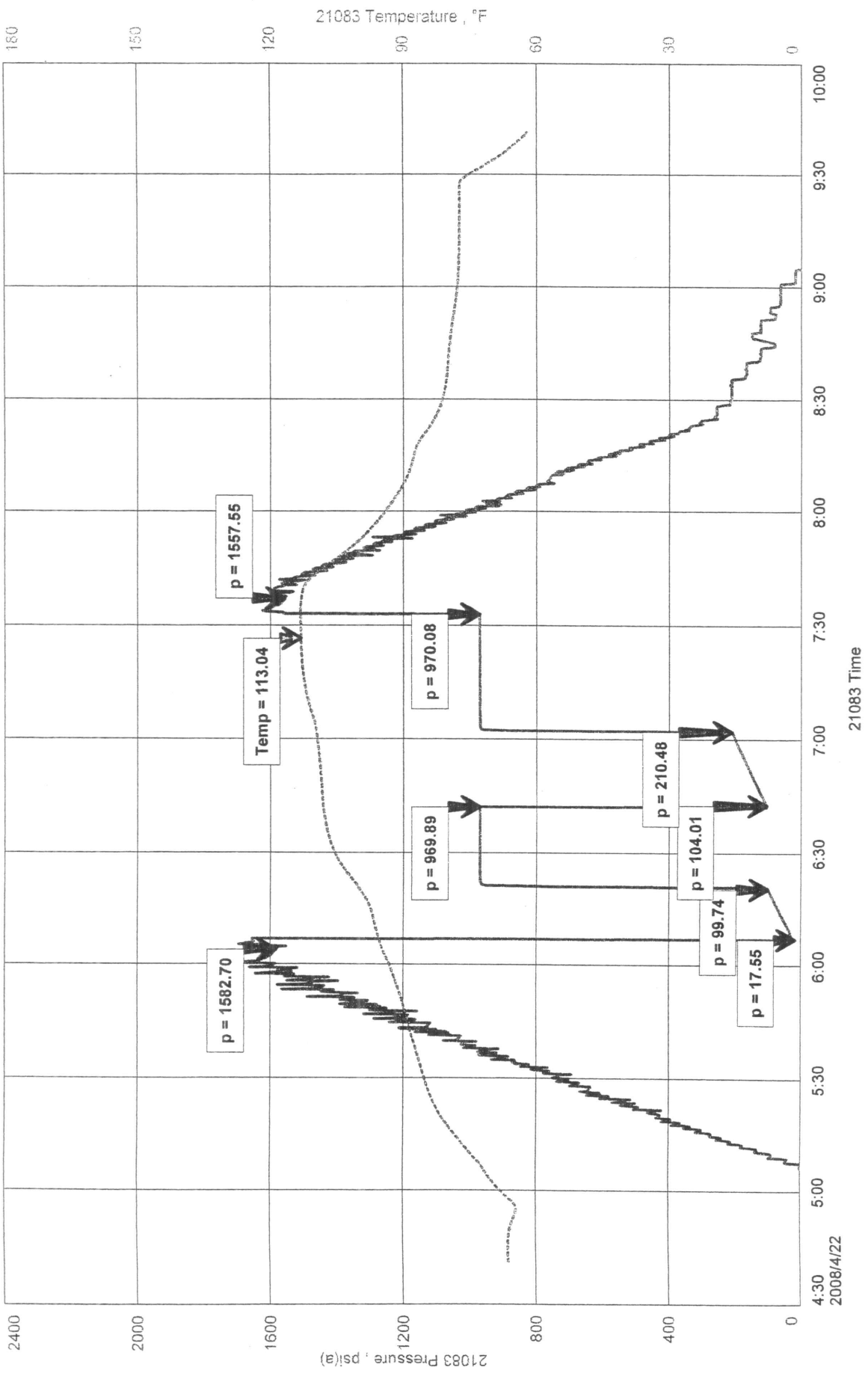
End Date: 2008/04/22 End Time: 09:35:00

Report Date: 2008/04/22 Prepared By: JOHN RIEDL

Remarks: Qualified By: JIM MUSGROVE

RECOVERY: 250' GAS IN PIPE
550' CLEAN GASSY OIL WITH SOME MUD CUT IN BOTTOM 100'

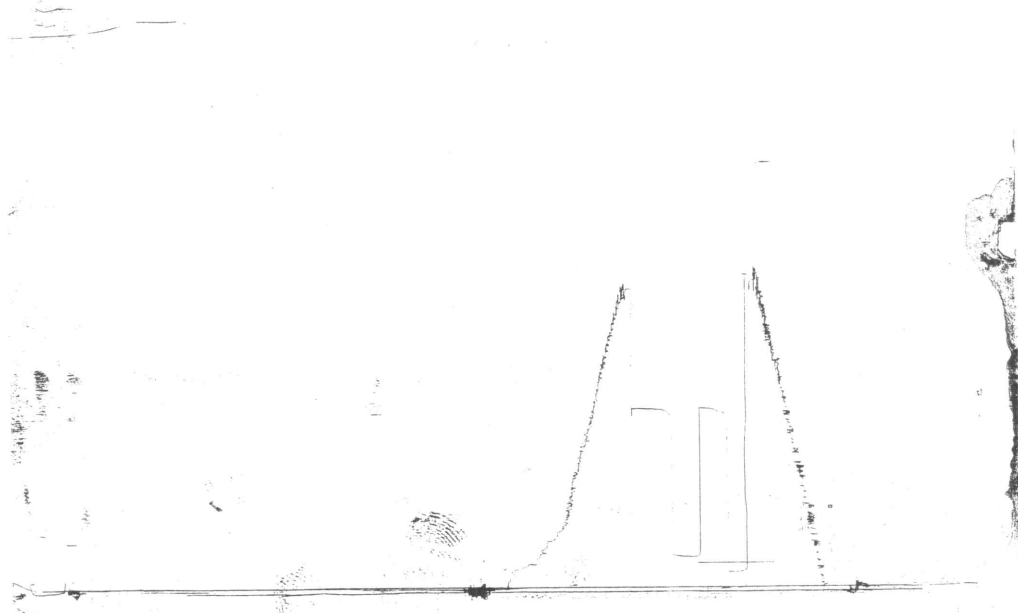
BIEBERLE TRUST #1



SCANNED
 Office of the
 Recorder
 RECEIVED

VSF #4

REC # 11073
 OCT 20



This is an actual photograph of recorder chart.

| POINT | PRESSURE | | PSI |
|----------------------------------|---------------|----------------------|-----|
| | Field Reading | Elec. Office Reading | |
| (A) Initial Hydrostatic Mud | 1583 | 1583 | PSI |
| (B) First Initial Flow Pressure | 18 | 18 | PSI |
| (C) First Final Flow Pressure | 100 | 100 | PSI |
| (D) Initial Closed-in Pressure | 970 | 970 | PSI |
| (E) Second Initial Flow Pressure | 104 | 104 | PSI |
| (F) Second Final Flow Pressure | 210 | 210 | PSI |
| (G) Final Closed-in Pressure | 970 | 970 | PSI |
| (H) Final Hydrostatic Mud | 1558 | 1558 | PSI |



11-16-12w

DIAMOND TESTING

P.O. Box 157
HOISINGTON, KANSAS 67544
(620) 653-7550 • (800) 542-7313
STC 21083.D435

Page 1 of 2 Pages

Company Reif Oil & Gas Co., LLC Lease & Well No. Bieberle Trust No. 1

Elevation 1914KB Formation Lansing/Kansas City "G" Zone Effective Pay -- Ft. Ticket No. J2238

Date 4-21-08 Sec. 11 Twp. 16S Range 12W County Barton State Kansas

Test Approved By Jim Musgrove Diamond Representative John C. Riedl

Formation Test No. 3 Interval Tested from 3,150 ft. to 3,166 ft. Total Depth 3,166 ft.

Packer Depth 3,145ft. Size 6 3/4 in. Packer Depth -- ft. Size -- in.

Packer Depth 3,150ft. Size 6 3/4 in. Packer Depth -- ft. Size -- in.

Depth of Selective Zone Set -- ft.

Top Recorder Depth (Inside) 3,153 ft. Recorder Number 21083 Cap. 5,000 psi

Bottom Recorder Depth (Outside) 3,163 ft. Recorder Number 11073 Cap. 4,000 psi

Below Straddle Recorder Depth -- ft. Recorder Number -- Cap. -- psi

Drilling Contractor Royal Drilling - Rig 1 Drill Collar Length -- ft. I.D. -- in.

Mud Type Chemical Viscosity 47 Weight Pipe Length -- ft. I.D. -- in.

Weight 8.8 Water Loss 9.0 cc. Drill Pipe Length 3,130 ft. I.D. 3 1/2 in.

Chlorides 6,500 P.P.M. Test Tool Length 20 ft. Tool Size 3 1/2 - IF in.

Jars: Make Sterling Serial Number Not Run Anchor Length 16 ft. Size 4 1/2 - FH in.

Did Well Flow? No Reversed Out No Surface Choke Size 1 in. Bottom Choke Size 5/8 in.

Main Hole Size 7 7/8 in. Tool Joint Size 4 1/2 - XH in.

Blow: 1st Open: Good blow, building throughout to 7 ins. at end. No blow back during shut-in.

2nd Open: Good blow, building throughout to 6 ins. at end. No blow back during shut-in.

Recovered 150 ft. of gas in pipe

Recovered 100 ft. of slightly mud cut gassy water with a scum of oil on top = 1.420000 bbls. (Grind out: 5%-mud;

Recovered 100 ft. of TOTAL FLUID = 1.420000 bbls. 10%-gas; 85%-water)

Recovered -- ft. of --

Recovered -- ft. of --

Remarks --

Time Set Packer(s) 7:05 ^{A.M.}~~P.M.~~ Time Started Off Bottom 9:35 ^{A.M.}~~P.M.~~ Maximum Temperature 104°

Initial Hydrostatic Pressure (A) 1547 P.S.I.

Initial Flow Period Minutes 30 (B) 16 P.S.I. to (C) 36 P.S.I.

Initial Closed In Period Minutes 30 (D) 550 P.S.I.

Final Flow Period Minutes 45 (E) 39 P.S.I. to (F) 63 P.S.I.

Final Closed In Period Minutes 45 (G) 543 P.S.I.

Final Hydrostatic Pressure (H) 1500 P.S.I.

GENERAL INFORMATION

Client Information:

Company: REIF OIL+GAS LLC

Contact: DON REIF

Phone: Fax: e-mail:

Site Information:

Contact: JIM MUSGROVE

Phone: Fax: e-mail:

Well Information:

Name: BIEBERLE TRUST #1

Operator: REIF OIL+GAS LLC

Location-Downhole: DST#3 3150 TO 3166

Location-Surface: S11/16S/12W BARTON COUNTY

Test Information:

Company: DIAMOND TESTING

Representative: JOHN RIEDL

Supervisor: JIM MUSGROVE

Test Type: CONVENTIONAL

Job Number: D435

Test Unit: 2

Start Date: 2008/04/21

Start Time: 05:40:00

End Date: 2008/04/21

End Time: 11:10:00

Report Date: 2008/04/21

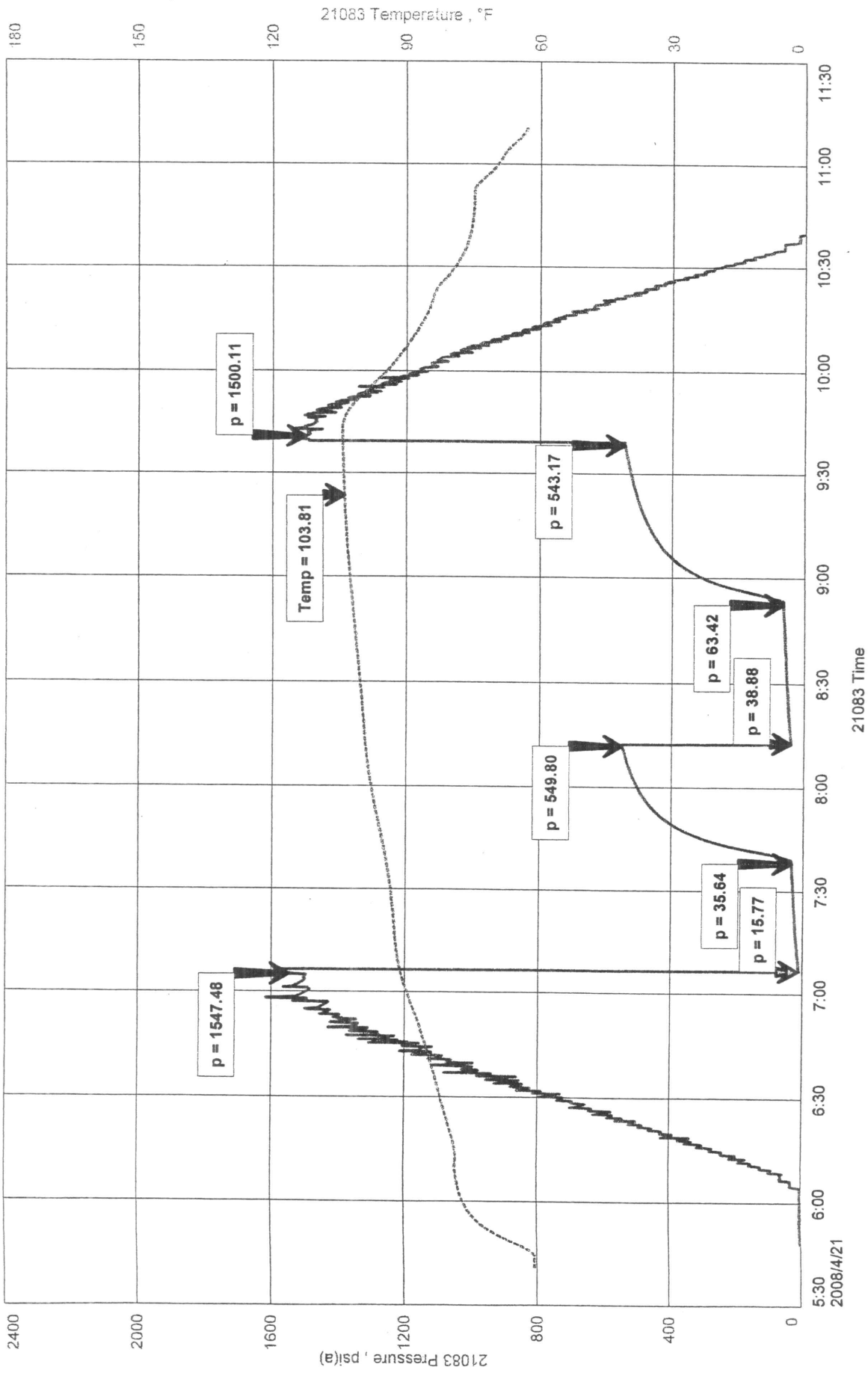
Prepared By: JOHN RIEDL

Remarks:

Qualified By: JIM MUSGROVE

RECOVERY: 150' GAS IN PIPE
100' SLIGHTLY MUD CUT GASSY WATER WITH A SCUM OF OIL ON TOP

BIEBERLE TRUST #1

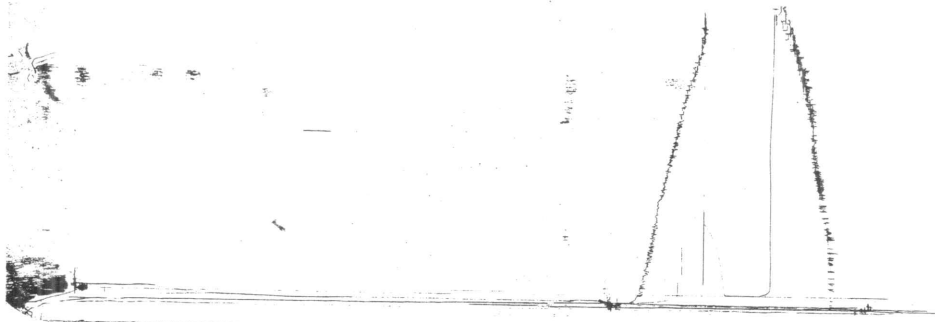


SCANNED

REVISED LOGS DST #3
BIBBOKO TRUST #

ROC #21083
OUTSIDE

CLOCK STOPPED



This is an actual photograph of recorder chart.

| POINT | PRESSURE | | E1ec. Office Reading |
|----------------------------------|------------------|------|----------------------------|
| | Field Reading | | |
| (A) Initial Hydrostatic Mud | 1547 | 1547 | PSI |
| (B) First Initial Flow Pressure | 16 | 16 | PSI |
| (C) First Final Flow Pressure | 36 | 36 | PSI |
| (D) Initial Closed-in Pressure | 550 | 550 | PSI |
| (E) Second Initial Flow Pressure | 39 | 39 | PSI |
| (F) Second Final Flow Pressure | 63 | 63 | PSI |
| (G) Final Closed-in Pressure | 543 | 543 | PSI |
| (H) Final Hydrostatic Mud | 1500 | 1500 | PSI |



DIAMOND TESTING

P.O. Box 157
HOISINGTON, KANSAS 67544
(620) 653-7550 • (800) 542-7313
STC 21083.D434

Company Reif Oil & Gas Co., LLC Lease & Well No. Bieberle Trust No. 1
Elevation 1914KB Formation Lansing/Kansas City "A" - "D" Effective Pay -- Ft. Ticket No. J2237
Date 4-20-08 Sec. 11 Twp. 16S Range 12W County Barton State Kansas
Test Approved By Jim Musgrove Diamond Representative John C. Riedl

Formation Test No. 2 Interval Tested from 3,053 ft. to 3,120 ft. Total Depth 3,120 ft.
Packer Depth 3,048 ft. Size 6 3/4 in. Packer Depth -- ft. Size -- in.
Packer Depth 3,053 ft. Size 6 3/4 in. Packer Depth -- ft. Size -- in.
Depth of Selective Zone Set ft.

Top Recorder Depth (Inside) 3,056 ft. Recorder Number 21083 Cap. 5,000 psi
Bottom Recorder Depth (Outside) 3,117 ft. Recorder Number 11073 Cap. 4,000 psi
Below Straddle Recorder Depth ft. Recorder Number Cap. psi

Drilling Contractor Royal Drilling - Rig 1 Drill Collar Length -- ft. I.D. -- in.
Mud Type Chemical Viscosity 47 Weight Pipe Length -- ft. I.D. -- in.
Weight 8.7 Water Loss 8.0 cc. Drill Pipe Length 3,033 ft. I.D. 3 1/2 in.
Chlorides 6,500 P.P.M. Test Tool Length 20 ft. Tool Size 3 1/2 - IF in.
Jars: Make Sterling Serial Number Not Run Anchor Length 67 ft. Size 4 1/2 - FH in.
Did Well Flow? No Reversed Out No Surface Choke Size 1 in. Bottom Choke Size 5/8 in.
Main Hole Size 7 7/8 in. Tool Joint Size 4 1/2 - XH in.

Blow: 1st Open: Strong blow. Off bottom of bucket in 30 secs. Gas to surface in 25 mins. No blow back during shut-in.
2nd Open: Strong blow. Off bottom of bucket immediately. Gas to surface throughout. No blow back during shut-in.

Recovered 130 ft. of oil specked gassy mud = 1.846000 bbls. (Grind out: 15%-gas; 85%-mud)

Recovered ft. of
Recovered ft. of
Recovered ft. of
Recovered ft. of

Remarks Gas gauged between 6 MCF/D to 8 MCF/D. Gas samples taken. Gas did burn.

Time Set Packer(s) 5:30 ~~AM~~ P.M. Time Started Off Bottom 8:00 ~~AM~~ P.M. Maximum Temperature 104°
Initial Hydrostatic Pressure (A) 1512 P.S.I.
Initial Flow Period Minutes 30 (B) 32 P.S.I. to (C) 37 P.S.I.
Initial Closed In Period Minutes 30 (D) 557 P.S.I.
Final Flow Period Minutes 45 (E) 38 P.S.I. to (F) 61 P.S.I.
Final Closed In Period Minutes 45 (G) 574 P.S.I.
Final Hydrostatic Pressure (H) 1471 P.S.I.

GENERAL INFORMATION

Client Information:

Company: REIF OIL+GAS LLC

Contact: DON REIF

Phone: Fax: e-mail:

Site Information:

Contact: JIM MUSGROVE

Phone: Fax: e-mail:

Well Information:

Name: BIEBERLE TRUST #1

Operator: REIF OIL+GAS LLC

Location-Downhole: DST #2 3053 TO 3120

Location-Surface: S11/16S/12W BARTON COUNTY

Test Information:

Company: DIAMOND TESTING

Representative: JOHN RIEDL

Supervisor: JIM MUSGROVE

Test Type: CONVENTIONAL Job Number: D434

Test Unit: 2

Start Date: 2008/04/20 Start Time: 04:15:00

End Date: 2008/04/20 End Time: 09:50:00

Report Date: 2008/04/20 Prepared By: JOHN RIEDL

Qualified By: JIM MUSGROVE

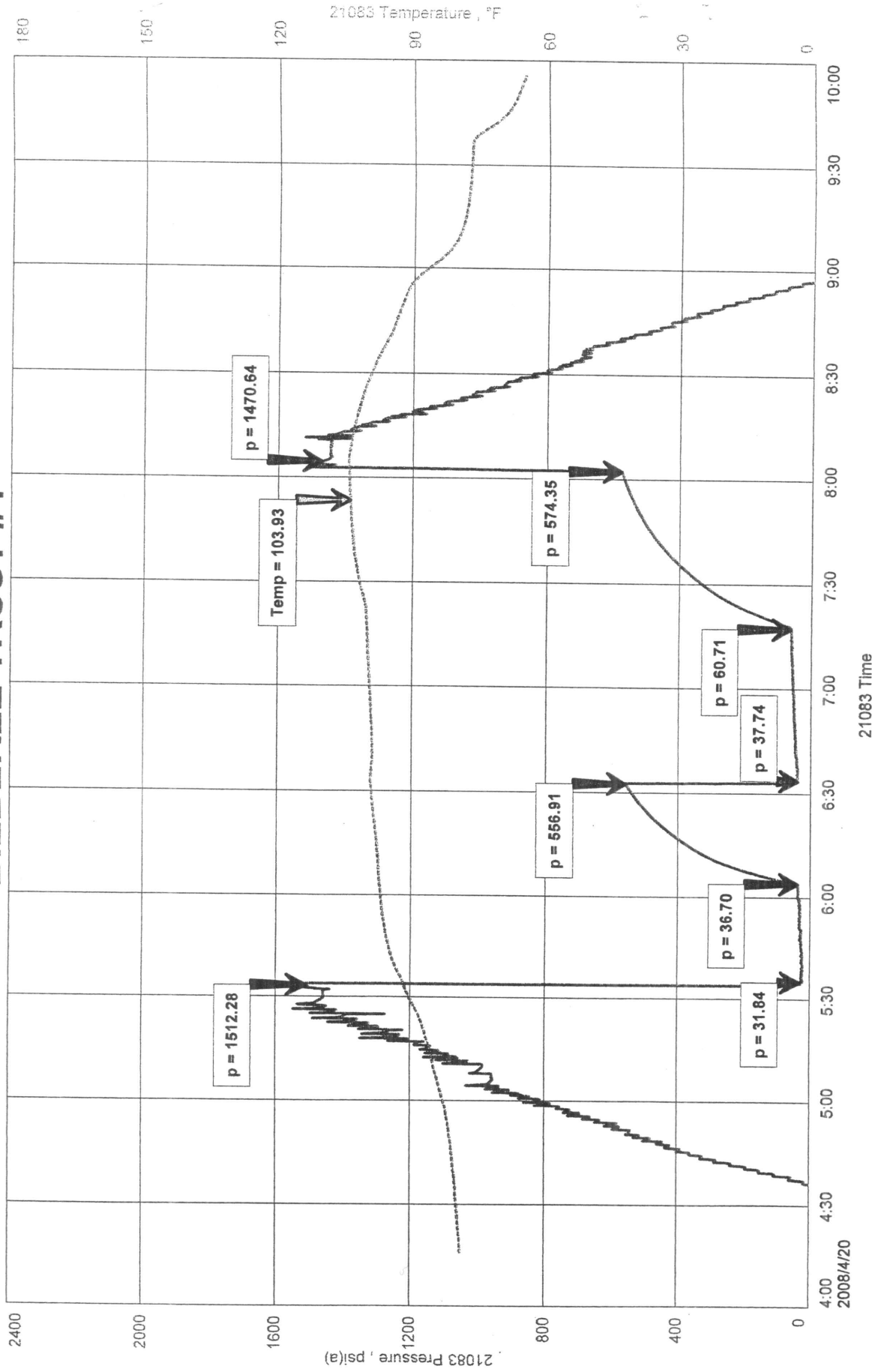
Remarks:

GAS TO SURFACE DURING TEST
RECOVERY: 150' OIL SPECKED GASSY MUD

REIF OIL+GAS LLC
DST #2 3053 TO 3120
Start Test Date: 2008/04/20
Final Test Date: 2008/04/20

BIEBERLE TRUST #
Formation: LKC " A-D
Job Number: D43

BIEBERLE TRUST #1

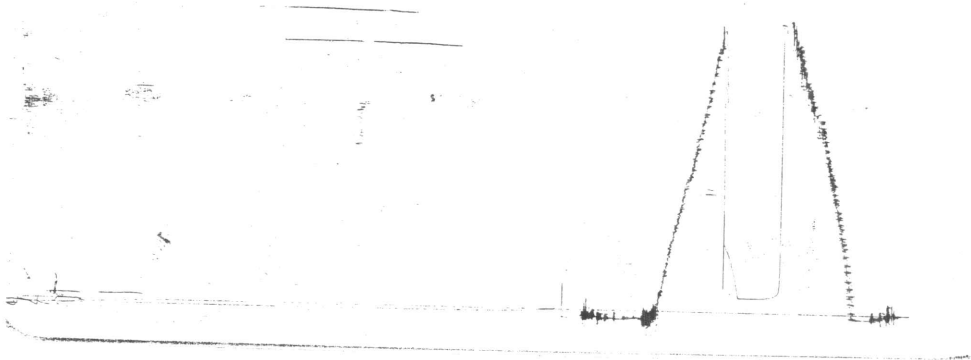


SCANNED
KGS Wichita Office

ROIF OLF GAS
RIBOXLO TROXO#1 DET #2

ROC #11023
OUTSIDE

RECORDER JAMMED



This is an actual photograph of recorder chart.

| POINT | PRESSURE | | |
|----------------------------------|---------------|----------------------|-----|
| | Field Reading | Elec. Office Reading | |
| (A) Initial Hydrostatic Mud | 1512 | 1512 | PSI |
| (B) First Initial Flow Pressure | 32 | 32 | PSI |
| (C) First Final Flow Pressure | 37 | 37 | PSI |
| (D) Initial Closed-in Pressure | 557 | 557 | PSI |
| (E) Second Initial Flow Pressure | 38 | 38 | PSI |
| (F) Second Final Flow Pressure | 61 | 61 | PSI |
| (G) Final Closed-in Pressure | 574 | 574 | PSI |
| (H) Final Hydrostatic Mud | 1471 | 1471 | PSI |



11-16-12W

DIAMOND TESTING

P.O. Box 157
HOISINGTON, KANSAS 67544
(620) 653-7550 • (800) 542-7313
STC 21083.D 433

Company Reif Oil & Gas Co., LLC Lease & Well No. Bieberle Trust No. 1
Elevation 1914KB Formation Topeka Effective Pay -- Ft. Ticket No. J2236
Date 4-19-08 Sec. 11 Twp. 16S Range 12W County Barton State Kansas
Test Approved By Jim Musgrove Diamond Representative John C. Riedl

Formation Test No. 1 Interval Tested from 2,882 ft. to 2,920 ft. Total Depth 2,920 ft.
Packer Depth 2,877 ft. Size 6 3/4 in. Packer Depth -- ft. Size -- in.
Packer Depth 2,882 ft. Size 6 3/4 in. Packer Depth -- ft. Size -- in.
Depth of Selective Zone Set ft.

Top Recorder Depth (Inside) 2,885 ft. Recorder Number 21083 Cap. 5,000 psi
Bottom Recorder Depth (Outside) 2,917 ft. Recorder Number 11073 Cap. 4,000 psi
Below Straddle Recorder Depth ft. Recorder Number Cap. psi

Drilling Contractor Royal Drilling - Rig 1 Drill Collar Length -- ft. I.D. -- in.
Mud Type Chemical Viscosity 47 Weight Pipe Length -- ft. I.D. -- in.
Weight 8.8 Water Loss 11.0 cc. Drill Pipe Length 2,862 ft. I.D. 3 1/2 in.
Chlorides 4,000 P.P.M. Test Tool Length 20 ft. Tool Size 3 1/2 - IF in.
Jars: Make Sterling Serial Number Not Run Anchor Length 38 ft. Size 4 1/2 - FH in.
Did Well Flow? No Reversed Out No Surface Choke Size 1 in. Bottom Choke Size 5/8 in.
Main Hole Size 7 7/8 in. Tool Joint Size 4 1/2 - XH in.

Blow: 1st Open: Strong blow, building throughout to 9 ins. at end. No blow back during shut-in.
2nd Open: Strong blow. Off bottom of bucket in 18 mins. No blow back during shut-in.

Recovered 350 ft. of gas in pipe
Recovered 30 ft. of very slightly oil cut thin mud = .426000 bbls. (Grind out: 1%-oil; 99%-mud) Chlorides: 4,000 Ppm
Recovered 30 ft. of TOTAL FLUID = .426000 bbls.
Recovered ft. of
Recovered ft. of
Remarks

Time Set Packer(s) 10:00 ~~P.M.~~ ^{P.M.} Time Started Off Bottom 12:30 ~~P.M.~~ ^{A.M.} Maximum Temperature 96°
Initial Hydrostatic Pressure (A) 1372 P.S.I.
Initial Flow Period Minutes 30 (B) 9 P.S.I. to (C) 13 P.S.I.
Initial Closed In Period Minutes 30 (D) 244 P.S.I.
Final Flow Period Minutes 45 (E) 14 P.S.I. to (F) 22 P.S.I.
Final Closed In Period Minutes 45 (G) 246 P.S.I.
Final Hydrostatic Pressure (H) 1324 P.S.I.

GENERAL INFORMATION

Client Information:

Company: REIF OIL+GAS LLC

Contact: DON REIF

Phone: Fax: e-mail:

Site Information:

Contact: JIM MUSGROVE

Phone: Fax: e-mail:

Well Information:

Name: BIEBERLE TRUST #1

Operator: REIF OIL+GAS LLC

Location-Downhole: DST #1 2882 TO 2920

Location-Surface: S11/16S/12W BARTON COUNTY

Test Information:

Company: DIAMOND TESTING

Representative: JOHN RIEDL

Supervisor: JIM MUSGROVE

Test Type: CONVENTIONAL

Job Number: D433

Test Unit: 2

Start Date: 2008/04/19

Start Time: 20:25:00

End Date: 2008/04/19

End Time: 02:20:00

Report Date: 2008/04/20

Prepared By: JOHN RIEDL

Remarks:

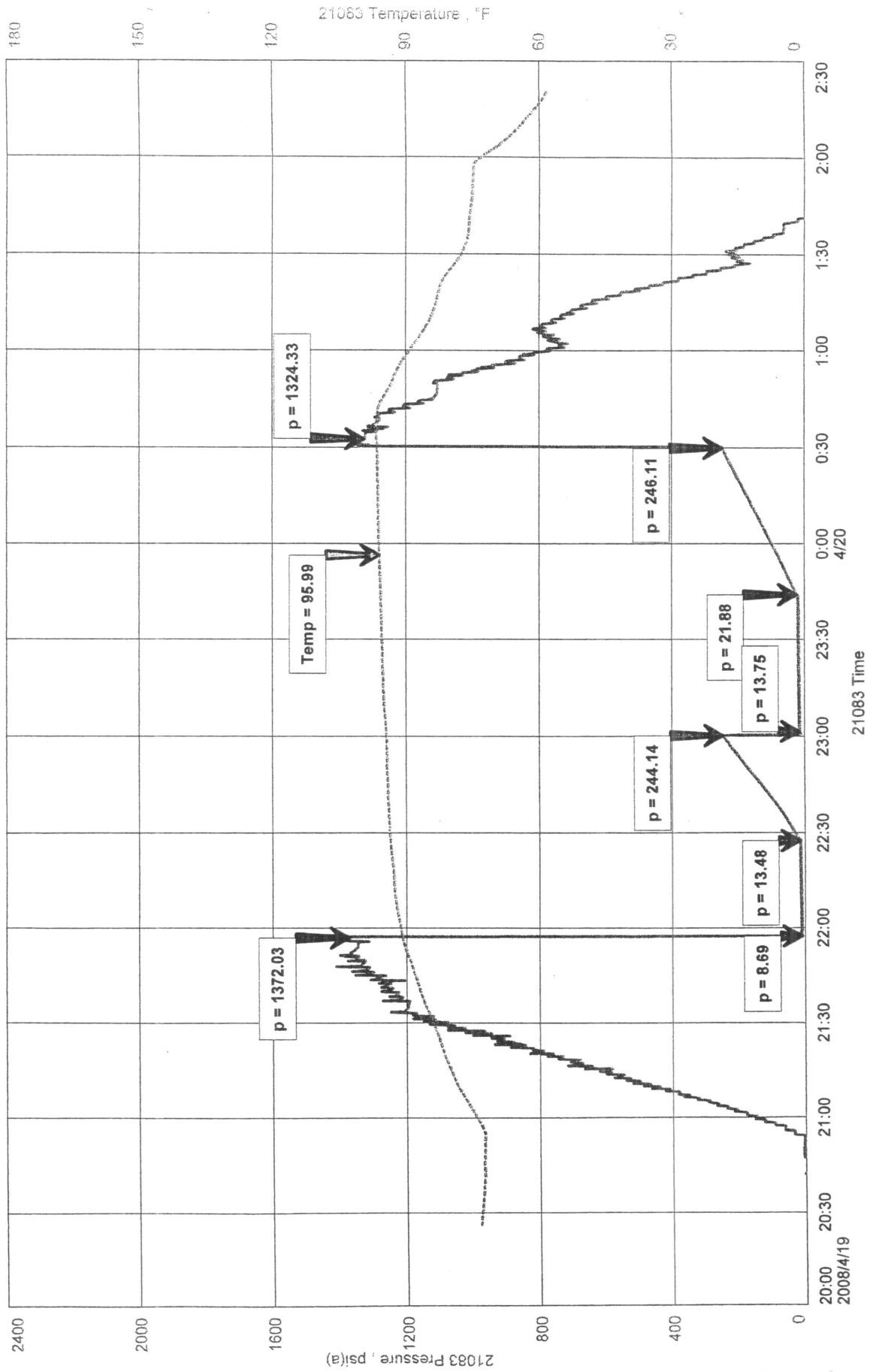
Qualified By: JIM MUSGROVE

RECOVERY: 350' GAS IN PIPE
30' VSL OIL CUT MUD

REIF OIL+GAS LLC
DST #1 2882 TO 2920
Start Test Date: 2008/04/19
Final Test Date: 2008/04/19

BIEBERLE TRUST #
Formation: TOPEK
Job Number: D43

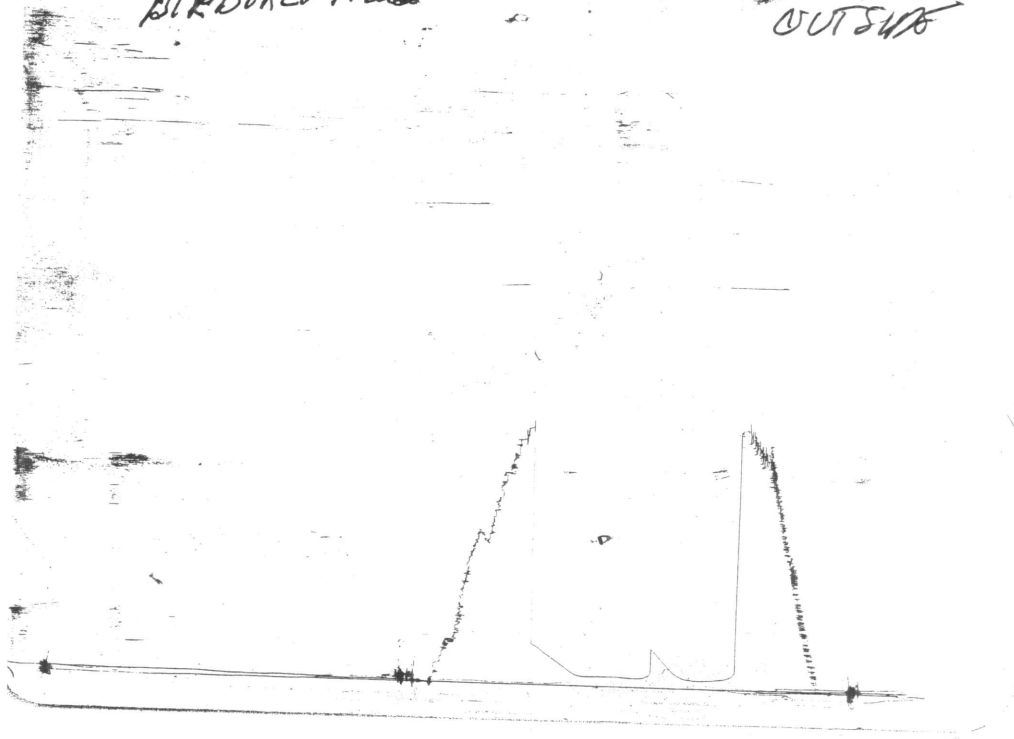
BIEBERLE TRUST #1



SCANNED
KGS Wichita Office

ROT FOLLOWS DST
BIRBORLO FOLLOWS

REC 11073
OUTSIDE



This is an actual photograph of recorder chart.

| POINT | PRESSURE | | |
|----------------------------------|---------------|----------------------|-----|
| | Field Reading | Elec. Office Reading | |
| (A) Initial Hydrostatic Mud | 1372 | 1372 | PSI |
| (B) First Initial Flow Pressure | 9 | 9 | PSI |
| (C) First Final Flow Pressure | 13 | 13 | PSI |
| (D) Initial Closed-in Pressure | 244 | 244 | PSI |
| (E) Second Initial Flow Pressure | 14 | 14 | PSI |
| (F) Second Final Flow Pressure | 22 | 22 | PSI |
| (G) Final Closed-in Pressure | 246 | 246 | PSI |
| (H) Final Hydrostatic Mud | 1324 | 1324 | PSI |