

15-009-24864

Ricketts Testing, Inc.

20-16s-12w

RECEIVED

NOV 07 2005



Company PALOMINO PETROLEUM, INC. Lease & Well No. DEMEL #1

Elevation 1911 G.L. Formation DOUGLAS SAND Ticket No. 2390

Date 9-1-05 Sec. 20 Twp. 16S Range 12W County BARTON State KS

Test Approved by ROBERT SCHREIBER Ricketts Representative JIMMY RICKETTS

Formation Test No. 1 Interval Tested from 3006 ft. to 3065 ft. Total Depth 3065 ft.

Packer Depth 3006 ft. Size 6 3/4 in. Packer Depth _____ ft. Size _____ in.

Packer Depth 3003 ft. Size 6 3/4 in. Packer Depth _____ ft. Size _____ in.

Depth of Selective Zone Set _____

Top Recorder Depth (Inside) 3011 ft. Recorder Number 11027 Cap. 4275

Bottom Recorder Depth (Outside) 3014 ft. Recorder Number W1023 Cap. 10000

Below Straddle Recorder Depth _____ ft. Recorder Number _____ Cap. _____

Drilling Contractor SOUTHWIND DRILLING RIG #2 Drill Collar Length _____ I.D. _____

Mud Type CHEMICAL Viscosity 45 Weight Pipe Length _____ I.D. _____

Weight 8.9 Water Loss 8.8 cc. Drill Pipe Length 2986 I.D. 3.25

Chlorides 6500 P.P.M. Test Tool Length 20 ft. Tool Size 5 1/2

Jars: Make _____ Serial Number _____ Anchor Length 59 ft. Size 5 1/2

Did Well Flow? NO Reversed Out NO Surface Choke Size 3/4 in. Bottom Choke Size 3/4

Gravity Oil _____ Main Hole Size 7 7/8 in. Tool Joint Size 4 1/2 XH

Blow: 1/2" BLOW THROUGHOUT INITIAL FLOW PERIOD. NO BLOW FINAL FLOW PERIOD.

Recovered 15 ft. of DRILLING MUD.

Recovered _____ ft. of _____

Recovered _____ ft. of _____

Recovered _____ ft. of _____

Recovered _____ ft. of _____

Remarks: _____

Time Set Packer (s) 2:51 AM. Time Started Off Bottom 4:51 A M. Maximum Temperature 103°

Initial Hydrostatic Pressure(A) 1452 P.S.I.

Initial Flow PeriodMinutes 30 (B) 13 P.S.I. to (C) 19 P.S.I.

Initial Closed In PeriodMinutes 30 (D) 668 P.S.I.

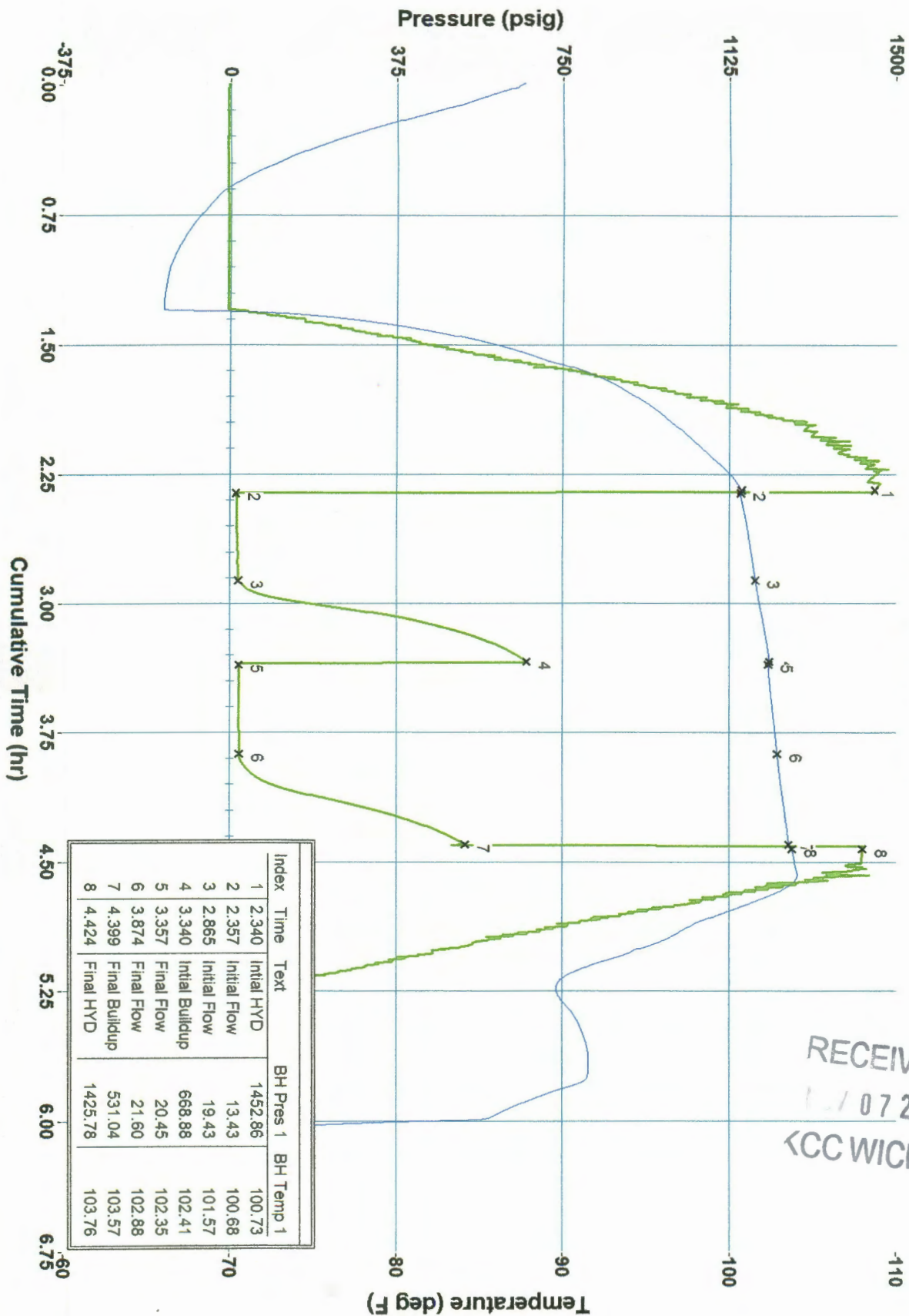
Final Flow PeriodMinutes 30 (E) 20 P.S.I. to (F) 21 P.S.I.

Final Closed In PeriodMinutes 30 (G) 531 P.S.I.

Final Hydrostatic Pressure(H) 1425 P.S.I.

Company Name Palorino Petroleum, Inc.
 Well Name Demel #1
 Type of Test DST #1 3006 to 3065
 Date(s) of Test 9-1-2005

Demel #1 DST #1



RECEIVED
 07 2005
 <CC WICHITA

Ricketts Testing, Inc.



Company PALOMINO PETROLEUM, INC. Lease & Well No. DEMEL #1
 Elevation 1911 G.L. Formation KANSAS CITY Ticket No. 2391
 Date 9-1-05 Sec. 20 Twp. 16S Range 12W County BARTON State KS
 Test Approved by ROBERT SCHREIBER Ricketts Representative JIMMY RICKETTS

Formation Test No. 2 Interval Tested from 3096 ft. to 3171 ft. Total Depth 3171 ft.
 Packer Depth 3096 ft. Size 6 3/4 in. Packer Depth _____ ft. Size _____ in.
 Packer Depth 3093 ft. Size 6 3/4 in. Packer Depth _____ ft. Size _____ in.
 Depth of Selective Zone Set _____

Top Recorder Depth (Inside) 3101 ft. Recorder Number 11027 Cap. 4275
 Bottom Recorder Depth (Outside) 3104 ft. Recorder Number W1023 Cap. 10000
 Below Straddle Recorder Depth _____ ft. Recorder Number _____ Cap. _____

Drilling Contractor SOUTHWIND DRILLING RIG #2 Drill Collar Length _____ I.D. _____ in.
 Mud Type CHEMICAL Viscosity 45 Weight Pipe Length _____ I.D. _____ in.
 Weight 9.1 Water Loss 8.0 cc. Drill Pipe Length 3076 I.D. 3.25 in.
 Chlorides 5000 P.P.M. Test Tool Length 20 ft. Tool Size 5 1/2 in.
 Bars: Make _____ Serial Number _____ Anchor Length 75 ft. Size 5 1/2 in.
 Did Well Flow? NO Reversed Out NO Surface Choke Size 3/4 in. Bottom Choke Size 3/4 in.
 Gravity Oil _____ Main Hole Size 7 7/8 in. Tool Joint Size 4 1/2 XH in.

Blow: WEAK BLOW BUILDING TO 9", THEN WEAKENING TO 6" INITIAL FLOW PERIOD. SURFACE BLOW THROUGHOUT FINAL FLOW PERIOD.

Recovered 90 ft. of DRILLING MUD.
 Recovered _____ ft. of _____
 Recovered _____ ft. of _____
 Recovered _____ ft. of _____
 Recovered _____ ft. of _____

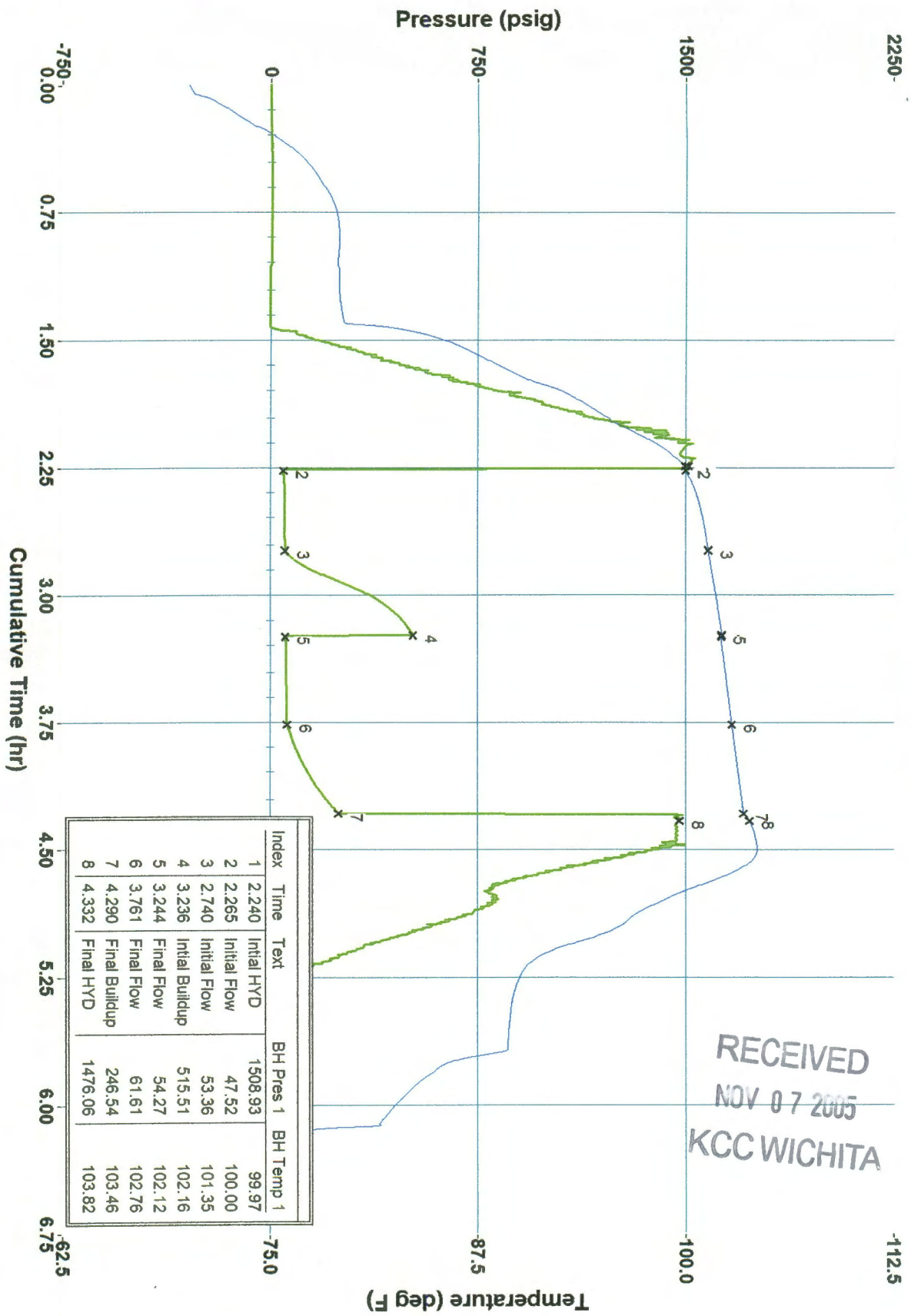
RECEIVED
NOV 07 2005
KCC WICHITA

Remarks: _____

Time Set Packer (s) 9:38 P.M. Time Started Off Bottom 11:38 P.M. Maximum Temperature 103°
 Initial Hydrostatic Pressure(A) 1508 P.S.I.
 Initial Flow PeriodMinutes 30 (B) 47 P.S.I. to
 (C) 53 P.S.I.
 Initial Closed In PeriodMinutes 30 (D) 515 P.S.I.
 Final Flow PeriodMinutes 30 (E) 54 P.S.I. to
 (F) 61 P.S.I.
 Final Closed In PeriodMinutes 30 (G) 246 P.S.I.
 Final Hydrostatic Pressure(H) 1476 P.S.I.

Company Name Palomirio Petroleum, Inc.
 Well Name Demel #1
 Type of Test DST #2 3096 to 3171
 Date(s) of Test 9-1-2005

Demel #1 DST #2



RECEIVED
 NOV 07 2005
 KCC WICHITA

| Index | Time | Text | BH Pres 1 | BH Temp 1 |
|-------|-------|-----------------|-----------|-----------|
| 1 | 2.240 | Initial HYD | 1508.93 | 99.97 |
| 2 | 2.265 | Initial Flow | 47.52 | 100.00 |
| 3 | 2.740 | Initial Flow | 53.36 | 101.35 |
| 4 | 3.236 | Initial Buildup | 515.51 | 102.16 |
| 5 | 3.244 | Final Flow | 54.27 | 102.12 |
| 6 | 3.761 | Final Flow | 61.61 | 102.76 |
| 7 | 4.290 | Final Buildup | 246.54 | 103.46 |
| 8 | 4.332 | Final HYD | 1476.06 | 103.82 |

Ricketts Testing, Inc.



Company PALOMINO PETROLEUM, INC. Lease & Well No. DEMEL #1
 Elevation 1911 G.L. Formation KANSAS CITY - LOWER Ticket No. 2392
 Date 9-3-05 Sec. 20 Twp. 16S Range 12W County BARTON State KS
 Test Approved by ROBERT SCHREIBER Ricketts Representative JIMMY RICKETTS

Formation Test No. 3 Interval Tested from 3252 ft. to 3342 ft. Total Depth 3342 ft.
 Packer Depth 3252 ft. Size 6 3/4 in. Packer Depth _____ ft. Size _____ in.
 Packer Depth 3249 ft. Size 6 3/4 in. Packer Depth _____ ft. Size _____ in.
 Depth of Selective Zone Set _____

Top Recorder Depth (Inside) 3257 ft. Recorder Number 11027 Cap. 4275
 Bottom Recorder Depth (Outside) 3260 ft. Recorder Number W1023 Cap. 10000
 Below Straddle Recorder Depth _____ ft. Recorder Number _____ Cap. _____

Drilling Contractor SOUTHWIND DRILLING RIG #2 Drill Collar Length _____ I.D. _____ in
 Mud Type CHEMICAL Viscosity 48 Weight Pipe Length _____ I.D. _____ in
 Weight 9.2 Water Loss 9.6 cc. Drill Pipe Length 3232 I.D. 3.25 in
 Chlorides 7000 P.P.M. Test Tool Length 20 ft. Tool Size. 5 1/2 in
 Jars: Make _____ Serial Number _____ Anchor Length 90 ft. Size 5 1/2 in
 Did Well Flow? NO Reversed Out NO Surface Choke Size 3/4 in. Bottom Choke Size 3/4 in
 Gravity Oil _____ Main Hole Size 7 7/8 in. Tool Joint Size 4 1/2 XH in

Blow: 2" BLOW THROUGHOUT INITIAL FLOW PERIOD. NO BLOW FINAL FLOW PERIOD.

Recovered 30 ft. of SLIGHTLY OIL SPECKED MUD **RECEIVED**
 Recovered _____ ft. of _____ **NO 07 2005**
 Recovered _____ ft. of _____ **KCC WICHITA**
 Recovered _____ ft. of _____
 Recovered _____ ft. of _____

Remarks: _____

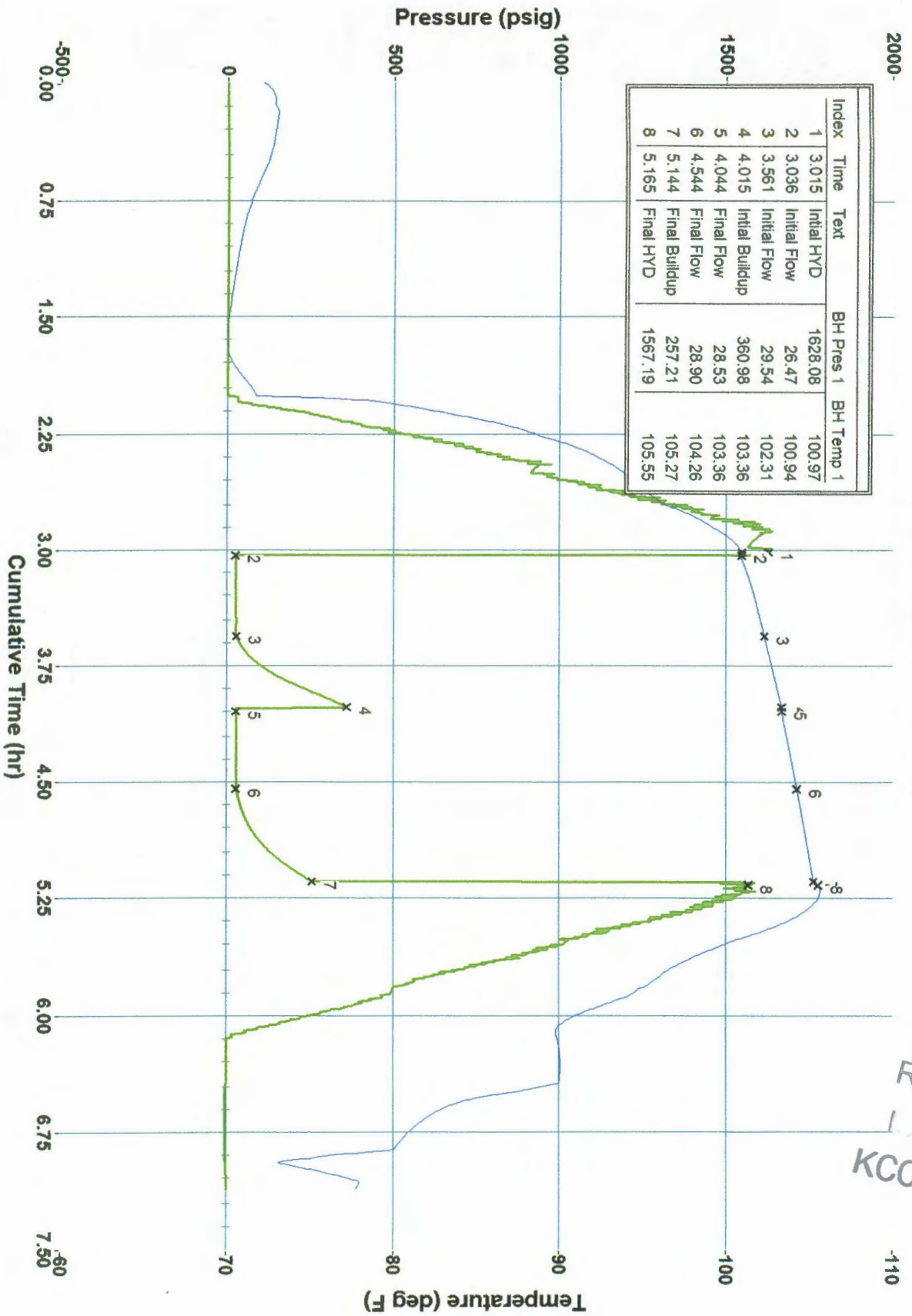
Time Set Packer (s) 5:30 A. M. Time Started Off Bottom 7:35 A. M. Maximum Temperature 105°
 Initial Hydrostatic Pressure.....(A) 1628 P.S.I.
 Initial Flow PeriodMinutes 30 (B) 26 P.S.I. to
 (C) 29 P.S.I.
 Initial Closed In PeriodMinutes 30 (D) 360 P.S.I.
 Final Flow Period.....Minutes 30 (E) 28 P.S.I. to
 (F) 28 P.S.I.
 Final Closed In Period.....Minutes 35 (G) 257 P.S.I.
 Final Hydrostatic Pressure.....(H) 1567 P.S.I.

Company Name Palomino Petroleum, Inc.
 Well Name Demel #1
 Type of Test DST #3 3252 to 3342
 Date(s) of Test 9-3-2005

Demel #1 DST #3

RECEIVED
 10/07
 KCC WICHITA

| Index | Time | Text | BH Pres 1 | BH Temp 1 |
|-------|-------|-----------------|-----------|-----------|
| 1 | 3.015 | Initial HYD | 1628.08 | 100.97 |
| 2 | 3.036 | Initial Flow | 26.47 | 100.94 |
| 3 | 3.561 | Initial Flow | 29.54 | 102.31 |
| 4 | 4.015 | Initial Buildup | 360.98 | 103.36 |
| 5 | 4.044 | Final Flow | 28.53 | 103.36 |
| 6 | 4.544 | Final Flow | 28.90 | 104.26 |
| 7 | 5.144 | Final Buildup | 257.21 | 105.27 |
| 8 | 5.165 | Final HYD | 1567.19 | 105.55 |





Ricketts Testing, Inc.

RECEIVED
NOV 07 2008
KCC WICHITA

Company PALOMINO PETROLEUM, INC. Lease & Well No. DEMEL #1

Location 1911 G.L. Formation ARBUCKLE Ticket No. 2393

Sec. 9-4-05 Sec. 20 Twp. 16S Range 12W County BARTON State KS

Test Approved by ROBERT SCHREIBER Ricketts Representative JIMMY RICKETTS

Formation Test No. 4 Interval Tested from 3315 ft. to 3392 ft. Total Depth 3392 ft.

Marker Depth 3315 ft. Size 6 3/4 in. Packer Depth _____ ft. Size _____ in.

Marker Depth 3312 ft. Size 6 3/4 in. Packer Depth _____ ft. Size _____ in.

Depth of Selective Zone Set _____

Recorder Depth (Inside) 3320 ft. Recorder Number 11027 Cap. 4275

Bottom Recorder Depth (Outside) 3323 ft. Recorder Number W1023 Cap. 10000

Flow Straddle Recorder Depth _____ ft. Recorder Number _____ Cap. _____

Drilling Contractor SOUTHWIND DRILLING RIG #2 Drill Collar Length _____ I.D. _____ in.

Fluid Type CHEMICAL Viscosity 53 Weight Pipe Length _____ I.D. _____ in.

Height 9.1 Water Loss 9.6 cc. Drill Pipe Length 3295 I.D. 3.25 in.

Chlorides 7000 P.P.M. Test Tool Length 20 ft. Tool Size 5 1/2 in.

Tools: Make _____ Serial Number _____ Anchor Length 77 ft. Size 5 1/2 in.

Initial Well Flow? NO Reversed Out YES Surface Choke Size 3/4 in. Bottom Choke Size 3/4 in.

Gravity Oil 37° Main Hole Size 7 7/8 in. Tool Joint Size 4 1/2 XH in.

Remarks: STRONG BLOW THROUGHOUT INITIAL FLOW PERIOD. STRONG BLOW THROUGHOUT FINAL FLOW PERIOD.

_____ covered 1790 ft. of OIL.

_____ covered 550 ft. of HEAVY MUD CUT OIL. 16% MUD 84% OIL

_____ covered 200 ft. of HEAVY GAS & OIL CUT WATER/SLUDGE. 13% GAS 31% OIL 56% WATER/SLUDGE

_____ covered _____ ft. of _____

_____ covered _____ ft. of _____

Remarks: _____

Time Set Packer (s) 1:54 A.M. Time Started Off Bottom 3:54 A.M. Maximum Temperature 114°

Initial Hydrostatic Pressure(A) 1639 P.S.I.

Initial Flow PeriodMinutes 30 (B) 265 P.S.I. to

(C) 736 P.S.I.

Initial Closed In PeriodMinutes 30 (D) 1023 P.S.I.

Final Flow PeriodMinutes 30 (E) 760 P.S.I. to

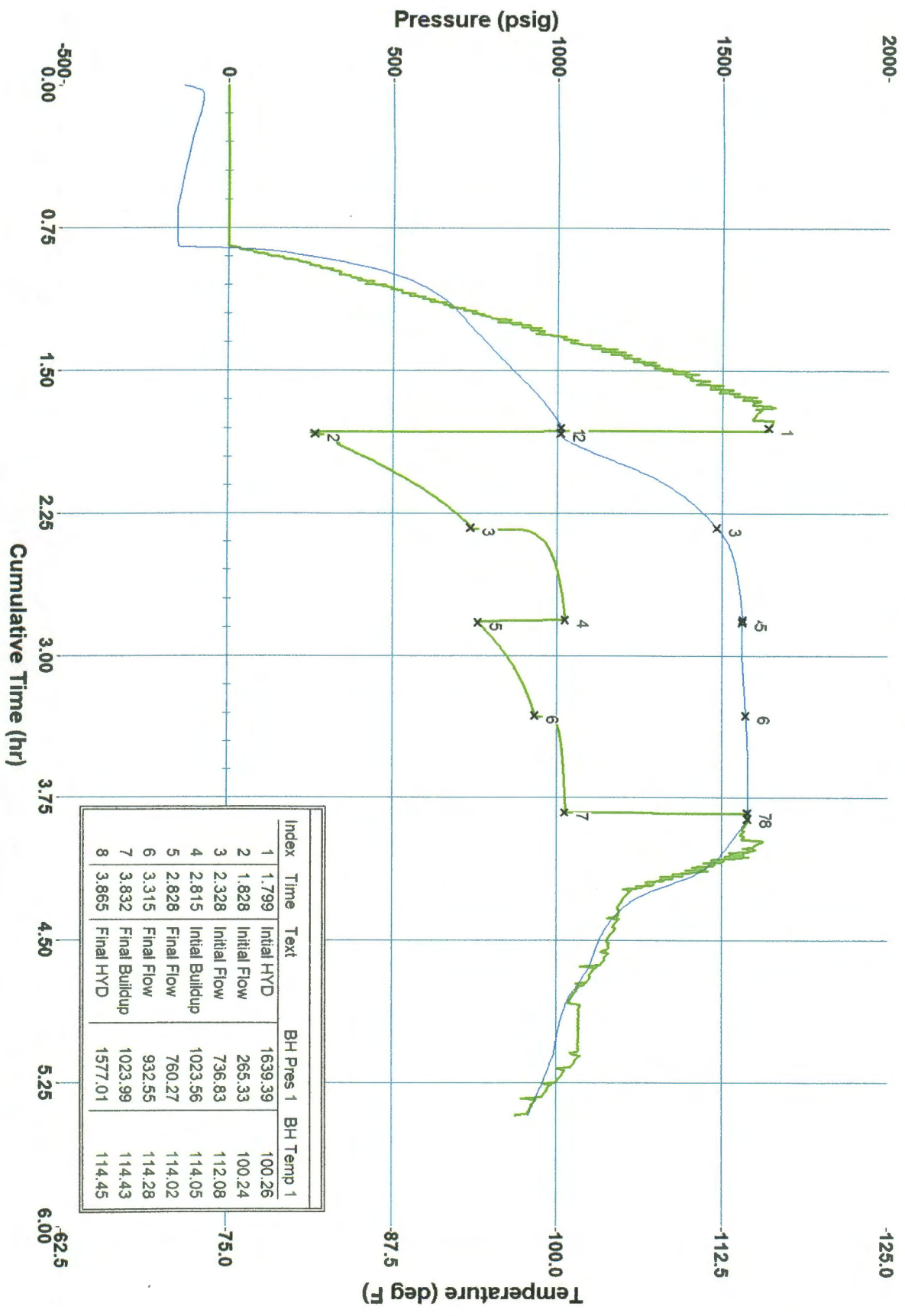
(F) 932 P.S.I.

Final Closed In PeriodMinutes 30 (G) 1023 P.S.I.

Final Hydrostatic Pressure(H) 1577 P.S.I.

Company Name Palomino Petroleum, Inc.
 Well Name Demel #1
 Type of Test DSR #4 3315 to 3392
 Date(s) of Test 9-4-2005

Demel #1 DST #4



| Index | Time | Text | BH Pres 1 | BH Temp 1 |
|-------|-------|-----------------|-----------|-----------|
| 1 | 1.799 | Initial HYD | 1639.39 | 100.26 |
| 2 | 1.828 | Initial Flow | 265.33 | 100.24 |
| 3 | 2.328 | Initial Flow | 736.83 | 112.08 |
| 4 | 2.815 | Initial Buildup | 1023.56 | 114.05 |
| 5 | 2.828 | Final Flow | 760.27 | 114.02 |
| 6 | 3.315 | Final Flow | 932.55 | 114.28 |
| 7 | 3.832 | Final Buildup | 1023.99 | 114.43 |
| 8 | 3.865 | Final HYD | 1577.01 | 114.45 |